

Plain Talks

&  News

APRIL, 1970
SPRING TOUR TIME

Beware of the Danger Signs

If you think most of the problems that beset the world and our nation today just happened that way; if you think it is a natural trend born of the modern age; if you think that it will suddenly all dissolve when we, the people, get tired of being bothered, then read an excerpt from a file on "Communist Rules for Revolution," published before 1919! The file was obtained by the armed forces in Dusseldorf, Germany. These were the instructions issued to those who were to bring about world revolution.

"A. Corrupt the young, get them away from religion. Get them interested in sex. Make them superficial, destroy their ruggedness.

"B. Get control of all means of publicity and thereby:

(1) Get people's minds off their government by focusing attention on athletics, sexy books and plays, and other trivialities.

(2) Divide the people into hostile groups by constantly harping on controversial matters of no importance.

(3) Destroy the people's faith in their natural leaders by holding the latter up to contempt, ridicule and obloquy.

(4) Always preach true democracy but seize power as fast and ruthlessly as possible.

(5) By encouraging government extravagance, destroy its credit, produce fear of inflation with rising prices and general discontent.

(6) Foment unnecessary strikes in vital industries, encourage civil disorders, and foster a lenient and soft attitude on the part of government toward such disorders.

(7) By specious argument cause the breakdown of the old moral virtues; honesty, sobriety, continence, faith in the pledged word, ruggedness.

"C. Cause the registration of all firearms on some pretext with the view of confiscation of them and leaving the population helpless."

This quite definitive treatise was first given public notice when it was printed in the Bartlesville, Oklahoma, Examiner-Enterprise. Printed but no one gave it much thought. Just fifty-one years later those who were given the plan of attack can check full 100 percent success in their efforts. We are sure there is now another such set of instructions, going on from where these left off. This time past history presents full reason to be concerned, if not completely frightened. Your enemies are patient but thorough. Your greatest enemy, however, is your disregard of the danger signs.

—Concrete (Wash.) Herald.

News Briefs



SERVICE AWARD MEETINGS SET

Starting this month and throughout the month of May, Service Award Meetings will be held across our system to honor our employees with 10 years of service or more. The dinner meetings start on April 28 in the Western Division at Lowman's Student Center, Sam Houston State University in Huntsville.

May 14 will be the date for the Baton Rouge Division meeting which will be held in the Grand Ballroom of the Capitol House Hotel. The Lake Charles Division will host its employees at the Chateau Charles Hotel in Lake Charles on May 19. The Port Arthur Division meeting is scheduled for May 21 at the Driftwood Motor Hotel. On May 26 the Beaumont Division Service Award Meeting will be held at the Royal Coach Inn, while all Beaumont-based system employees will be feted on June 10.

This is an annual presentation of Service Award pins to the employees that have reached the 10 year, 20 year, 30 year or 40 year mark with the company. Arrangements for the meetings are being handled by the Personnel Department and President Smith is scheduled to speak at the dinners.

PROMOTIONS ANNOUNCED FOR LEWIS CREEK STATION

J. A. Meitzen, superintendent of Lewis Creek Station, has announced the promotion of Weldon L. Dube, formerly turbine engineer, Neches Station, Beaumont, to the position of control operations foreman at our new power plant in Conroe. It was also disclosed that Horace A. Taylor, formerly equipment operator, Sabine Station, Bridge City, has been promoted to control operations foreman at Lewis Creek. More information on these promotions will be carried in May PLAIN TALKS.

MAY 2 IS AN IMPORTANT DATE

One of your greatest freedoms is about to be tested on May 2: the freedom to vote for public officials to represent you in our various levels of government. Primary elections will be held on that date and this election should not be taken lightly. You should not allow this freedom to slide by--study the men who are running and vote for the one who represents your views. But above all VOTE. The results will set the destiny of our nation and our freedom. (Note: Primary Election for Texas residents only)

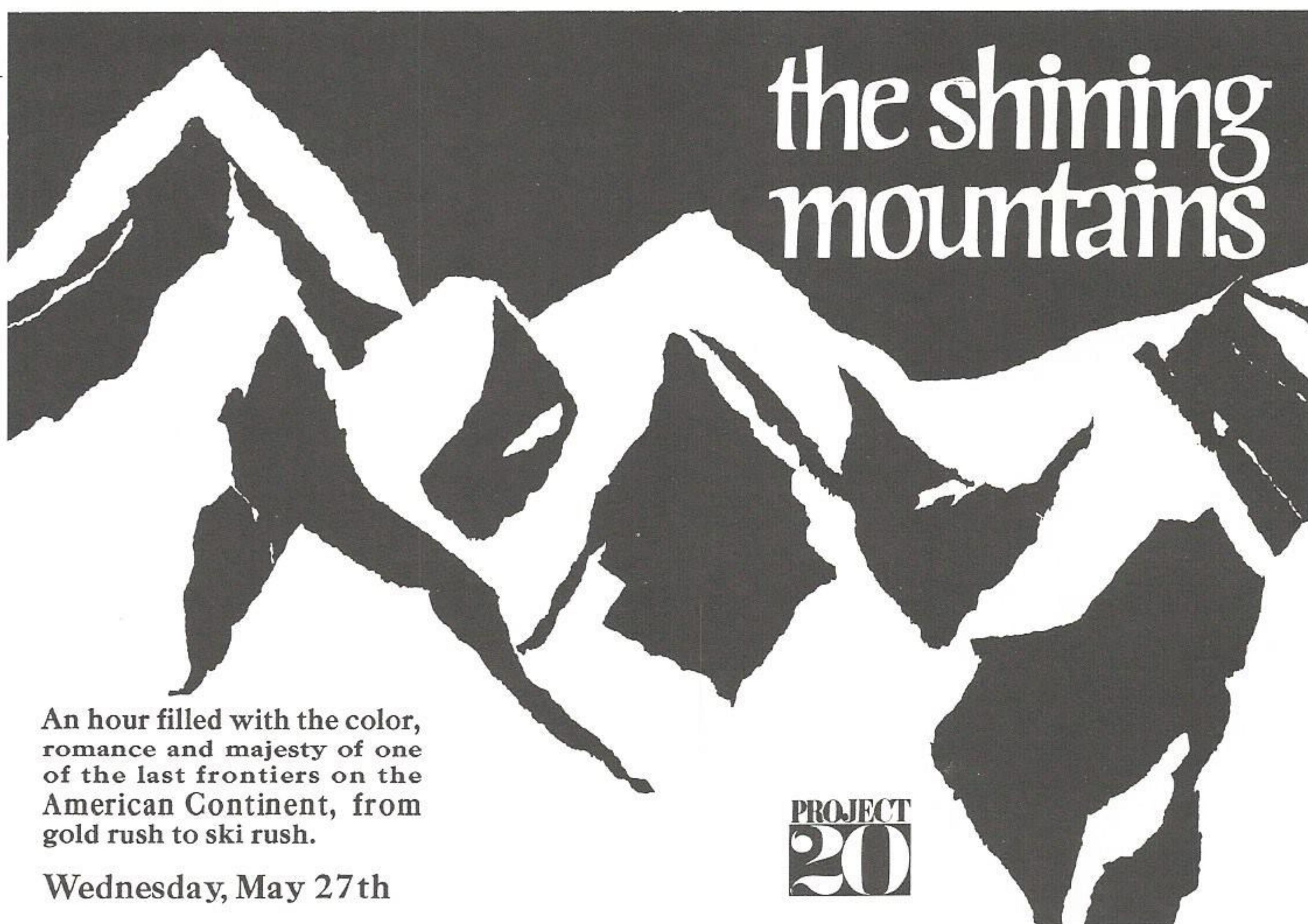
FPC COMMISSIONER
SPEAKS TO STUDENTS

Environment." He commented, "All too rarely is the search for solutions raised to the same status level as the deploring of causes." He asked whether electric power is "the ally or the enemy" in current environmental debate.

"Industry is rapidly becoming the largest single user of electric power... This means jobs... The need for energy therefore runs to the very root of our economic system," continued Commissioner Carver. He concluded that environmental quality contains within itself the seeds of contradiction and that the public will either have to reduce its use of power which is rather unlikely or possibly pay increased rates to reduce thermal pollution by nuclear plants.

ECAP PRESENTS TELEVISION SPECIAL

Wednesday, May 27th, our company through participation in the Electric Companies Advertising Program will present "THE SHINING MOUNTAINS." It will start at 9 p.m. and be aired on your local NBC television station.



An hour filled with the color, romance and majesty of one of the last frontiers on the American Continent, from gold rush to ski rush.

Wednesday, May 27th

PROJECT
20

RUSSELL GETS
APPOINTMENT

recommended for confirmation a day earlier by the Senate Interior Committee following a short hearing. Mr. Russell was deputy director of the Office of Emergency Preparedness.

Fred J. Russell was confirmed as new Interior Under Secretary by voice vote of the Senate on Apr. 7. He had been



Volume 48

Number 4

April, 1970

<i>JA Leads the Way</i>	2
<i>The Wonderful Tax Return</i>	4
<i>Service Awards</i>	6
<i>Promotions</i>	7
<i>Golf Tournaments</i>	10
<i>Spring Tour Time</i>	11
<i>Letters & News</i>	14
<i>New GSU Company</i>	15
<i>GSU Pictorial Parade</i>	16
<i>Coffee Cup</i>	18



JA Leads, p. 2



Spring Tour, p. 11

Published Monthly By
Public Relations Dept.
GULF STATES UTILITIES CO.
P. O. Box 2951
Beaumont, Texas 77704

James S. Turner, Director, Public Relations
Lee Stepleton, Associate Editor
Jim Harper, Contributing Editor
Walt Wright, Contributing Editor,
Baton Rouge

Member: 

OUR COVER:

Artist Larry Lanier conjured up this combination of Springtime sights around our system. It features golfing, tours, power towers and people enjoying life in our Emerging Land.

JA Leads

Junior Achievement helps develop businessmen of tomorrow. It is youth in action. They learn how to operate in the free enterprise system. And they learn from experienced businessmen.

Companies like our own sponsor Junior Achievement companies that function like any regular corporation. Employees of our company like Mark Walton, chemist; Bill Lee, industrial sales engineer; and Walt Jones, right-of-way man, all of our Baton Rouge Division represent the numerous employees that give many hours of their free time to Junior Achievement.

These men give up their Monday nights to work with youth from the 10th-12th grades. The program runs concurrent with the school year from September to May.

In Baton Rouge, these three men helped construct Y-A ENTERPRISES, a Junior Achievement company. "Y-A" stands for Youth In Action. The company has 14 members. To get the company going, the students sold "stock" in the company and raised \$75.00 worth of capital. They then selected a product to manufacture. Y-A-E is selling a "Handy Hanger" which is a garden hose rack made out of 1/2" steel conduit.

The company functions exactly as any large corporation. They pay income and sales taxes, commissions on sales and have officers including various personnel. They operate at a 23% profit.

Each Monday night the Y-A-E employees manufacture approximately 50 Handy Hangers and they retail at \$1.00 each. During the week the students sell the products to make their profit. The products have been well received by the public. This is proven by the fact that Y-A-E even wholesales Handy Hangers to other Junior

J. R. Murphy, vice president Louisiana Operations, is shown purchasing a share of stock in a GSU-sponsored Baton Rouge Junior Achievement company. Deborah Sullivan, a student of Istrouma High School and president of Y. A. Enterprises, makes the sale as Walter Jones, GSU advisor for the young company, looks on.



the Way

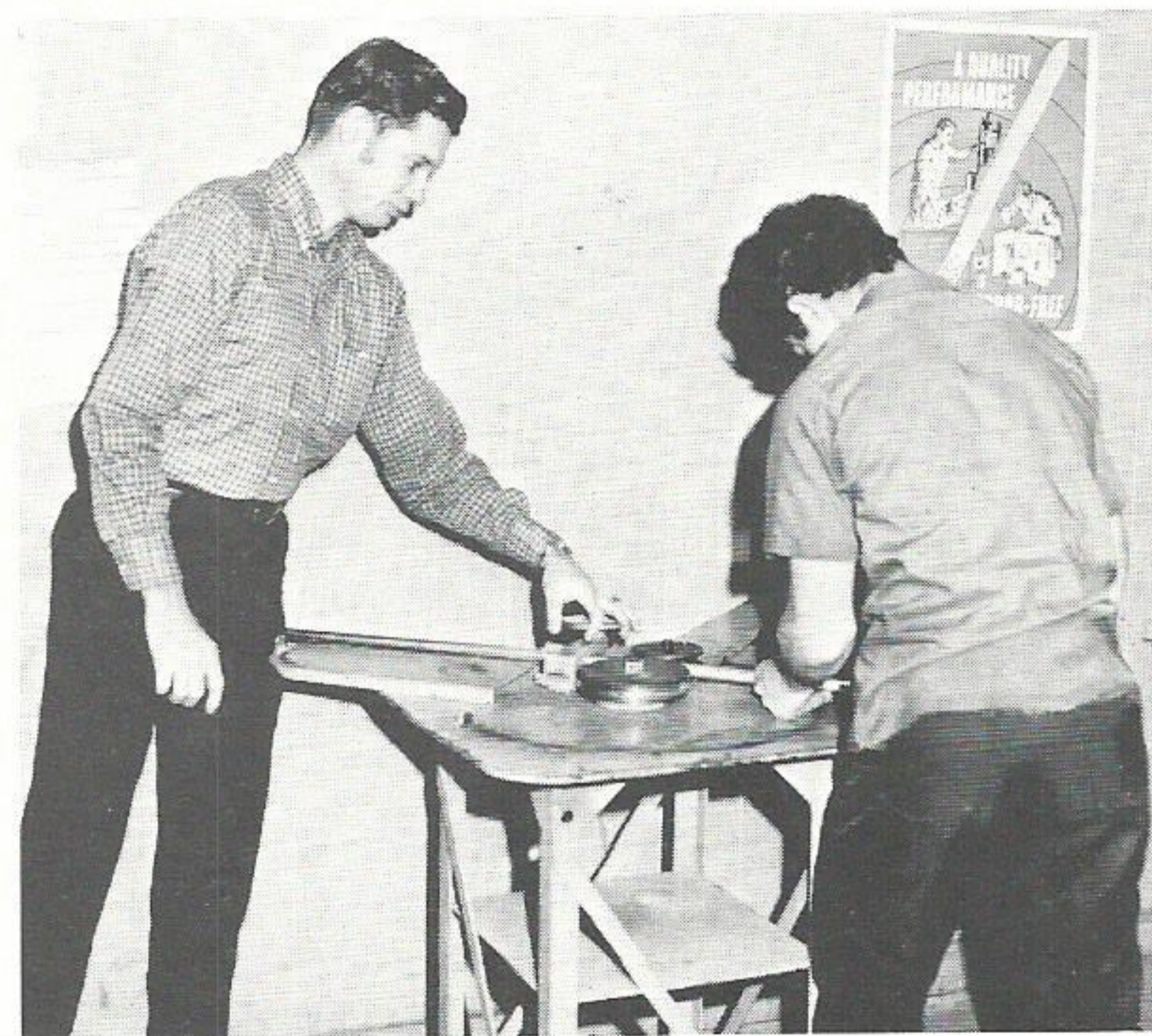
Achievement companies that specialize in sales of various products. Mark Walton stated that the JA company is doing pretty good now although they got off to a slow start.

This is Mr. Walton's first experience with Junior Achievement and he says it is "a good pasttime and a lot of fun." So, when this 30-year old chemist is not checking for pollution at our Louisiana Power Station he is working with tomorrow's leaders through Junior Achievement.

Bill Lee is also enjoying his first experience with JA. He noted, "I have learned more about how a company is formed and organized and how to work with young people." His wife, the former Linda Frame, and two children, Art and Cinday, keep him pretty busy but he finds time to keep in tune with the young people of Y-A-E. He also spends his time with the Baton Rouge Amateur Radio Club when he is not working with our industrial customers and trying to solve their problems.

Walter Jones keeps busy in our T&D Department but spends a great deal of time with Y-A-E in his role as sponsor. Married to the former Henrietta Clark of Silver Creek, Mississippi, they have two children, Pamela and Walter Keith. Not all of his time is devoted to JA work for he is the Senior Councilor of the United Commercial Travelers of Baton Rouge.

Sum it all up and you have three dedicated sponsors helping 14 young people understand the free enterprise system. This same story is repeated in almost every office of our company from Conroe to Baton Rouge. These men are to be congratulated for they are helping tomorrow's businessman, today.



Above Mark Walton assists Junior Achiever in making a Handy Hanger, while below Walter Jones and Bill Lee help put the finishing touches on the JA product.



The New Non-Revolutionary WONDERFUL Tax Return



Wow—the month of April proved to be a painful experience for many taxpayers. The new form, new taxes and confused regulations made the WONDERFUL Income Tax Return a groovy idea.

Sometimes it seems that all the Internal Revenue Service (IRS) really wants is a tax program that is certain to confuse, frustrate and anger the taxpayer. Did you find that to be true? Well, our plan, we feel, accomplishes that. But not only does it satisfy the desires of the IRS . . . it results in the taxpayer paying absolutely nothing. That's what makes our plan WONDERFUL.

If you will fill out the accompanying TAX FORM 0000, you will find that the instructions are really quite ridiculous. But once you realize that this is intentional, aimed at warming the cockles of IRS hearts, you will be encouraged to proceed. It's worth the effort, because you will discover that whatever your income, if you follow the instructions carefully you will wind up paying absolutely no taxes. That's why our plan is WONDERFUL.

But on the serious side, while federal taxes remain the most burdensome and worrisome, state and local taxes are increasing at greater rates. Taxation experts predict that taxes of all three levels of government will go higher and higher in the 1970's.

Where federal taxes doubled in the past 10 years, a National Chamber of Commerce study notes, state and local levies went up two and a half times in the same period.

Federal income tax receipts for fiscal 1969 reached \$124 billion, compared to \$62 billion in 1960. Enactment in 1968 of the 10% income tax surcharge, along with accelerated corporate income tax payments, accounted for the big jump in the 1969 fiscal period.

The average American's tax load grew heavier in 1969 as a result of state legislative action. During that year, 40 states increased taxes in one form or another. Sales tax rates went up in 12 states. First imposed in the early 1930's, sales taxes are now in effect in 45 states.

Income taxes were increased by 19 states during 1969. In the 41 states with personal income taxes, and the 43 with corporate income taxes—in one form or the other—the levies produced \$8.7 billion in 1967, or 24% of all state tax collections. Individual income taxes were about twice that of corporate income taxes.

Other tax increases in 1969 include: Tobacco taxes—up in 21 states; alcoholic beverage taxes—up in 20 states, and motor fuel taxes—up in 16 states.

At the rate of increases, the states should be collecting a total of \$44 billion

in 1970 compared with \$36.4 billion taken in the fiscal year ending in 1968.

On top of the \$27 billion another \$1 billion was collected by state governments on property. It is anticipated that the combined state-local property tax take will hit \$32 billion in 1970.

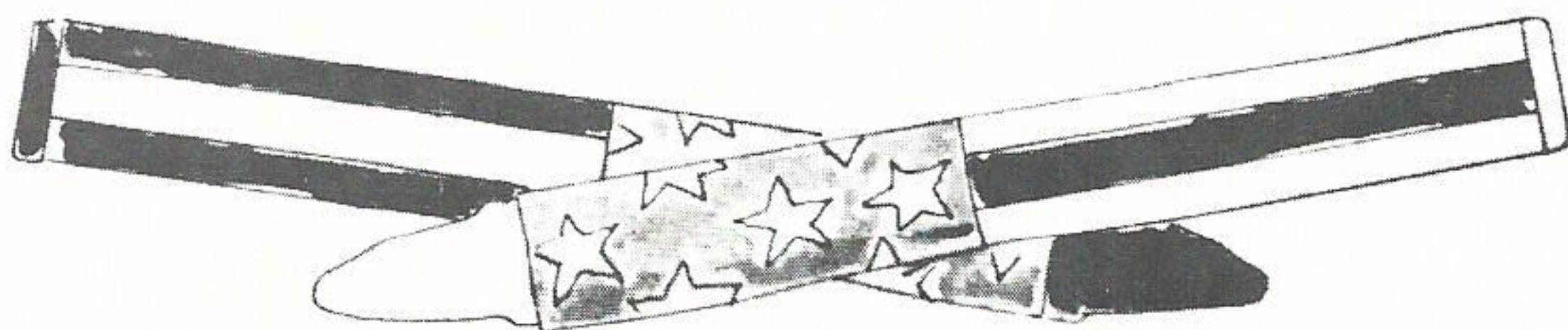
Despite long-held beliefs by tax scholars that the property tax should be abolished, the end is not in sight in view of the amount it produces—almost half of all state and local tax collections.

More and more states, the Chamber finds, are turning to modernizing their property tax systems to make them more equitable and efficient.

Nonproperty taxes are advancing. For example at present some 3,000 localities are imposing their own sales taxes, and about the same number impose local income or payroll taxes. Currently, 17 cities with populations over 150,000 are collecting income taxes.

The average American has seen his tax load grow since the beginning of the century. In 1902, his average tax total was \$17 — federal, state and local. By 1940, the figure was up to \$96; in 1950, \$337, and in 1960, the average tax load was \$628.

The National Chamber estimates the total per capita tax for 1970 will be more than \$1,050 for every man, woman and child in America. So, relax and get ready to pay more but in the meantime, try the WONDERFUL Income Tax Return and pay nothing.





form **0000**

**Your
WONDERFUL
Income Tax Return**

1969

1. Total 1969 gross income gained from wages, salary, tips, interest, dividends, including profit or loss from sale of property . . . you know, all that jazz. Round figure off, and enter only the first three digits.

1. _____

2. If the last two digits on Line 1 above are both zeroes (00), add one dollar. If not, simply carry Line 1.

2. _____

3. If the difference between the first and last digits in Line 2 is one or less, add one, two or three to the last digit, depending upon which is necessary to make the difference between the first and last digits two or more. Enter re-adjusted gross income or simply carry Line 2.

3. _____

4. Reverse the order of the three digits on Line 3, which represent your gross or adjusted gross income. (e.g., 581 becomes 185.) Enter reversed figure.

4. _____

5. Determine ADJUSTED NET INCOME: If Line 3 is less than Line 4, subtract Line 3 from Line 4. If Line 4 is less than Line 3, subtract Line 4 from Line 3. Enter here.

5. _____

6. Reverse the order of the three digits on Line 5. (e.g., 763 becomes 367.)

6. _____

7. Add Line 5 and Line 6 to establish your re-re-adjusted declared, deducted, deduced and despaired net income.

7. _____

8. YOUR GROSS TAX. (If this is a single return, multiply by 2; if married filing jointly, multiply by 2; married filing separately, multiply by 2; unmarried head of household, multiply by 2; widows, multiply by 2; as a matter of fact, we can't think of any circumstances under which you wouldn't multiply by 2. So just take Line 7 and multiply by 2 and don't ask any questions.)

8. _____

9. DEDUCTION. The standard deduction under the WONDERFUL tax plan is \$2,178. If you are covered by one of the categories in Line 8, enter the standard deduction here. If you are not, you are probably deceased, and in most cases not required to file a return if you choose not to.

9. _____

10. TOTAL FEDERAL TAX DUE. Subtract Line 9 from Line 10. If there is a balance, you did a lousy job of following instructions or you just can't add and subtract. If there is no balance, you are to be congratulated for your perseverance, and will certainly agree that this plan is WONDERFUL!

10. _____

Sign Here ▷

(This may be WONDERFUL—but it's just a joke! Not an official form.)



SERVICE AWARDS

Western Division Hosts Local Home Builders

A series of Home Builder Meetings was held in the Western Division in late March. The meetings were conducted in Huntsville, Conroe and Cleveland and were handled by the respective residential sales representative.

There were two purposes of the meetings: one, to acquaint the builders with our 1970 program and two, to show our appreciation for the splendid job they have done on acquainting their customers to Gold Medallion Home living.

The attendance was good at all three meetings and the builder enthusiasm was heart warming stated Mr. V. R. Norvel, division sales superintendent. At the end of each program, the builders knowledge of the material that had been presented was tested and prizes awarded to the attentive builders for their correct answers.

In attendance at all of the meetings were W. E. Richard, Western Division Manager; V. R. Norvell, division sales superintendent; C. W. Winborn, division sales supervisor and Charles DeCuir, area development supervisor. The men in charge of each program were Calvin Jaetzold, Conroe; Dewey "Pete" Allbritton, Huntsville; and Edd Mitchell, Cleveland.

The Gold Medallion Home is one that is TOTAL ELECTRIC, while the Bronze Medallion Home is only partially electric. The builder will receive a special Medallion door bell or emblem for the home, a yard sign, a cash allotment for advertising, a special cash wiring allowance, a reduced price for electric postyard lamps and other advertising aids for the home.

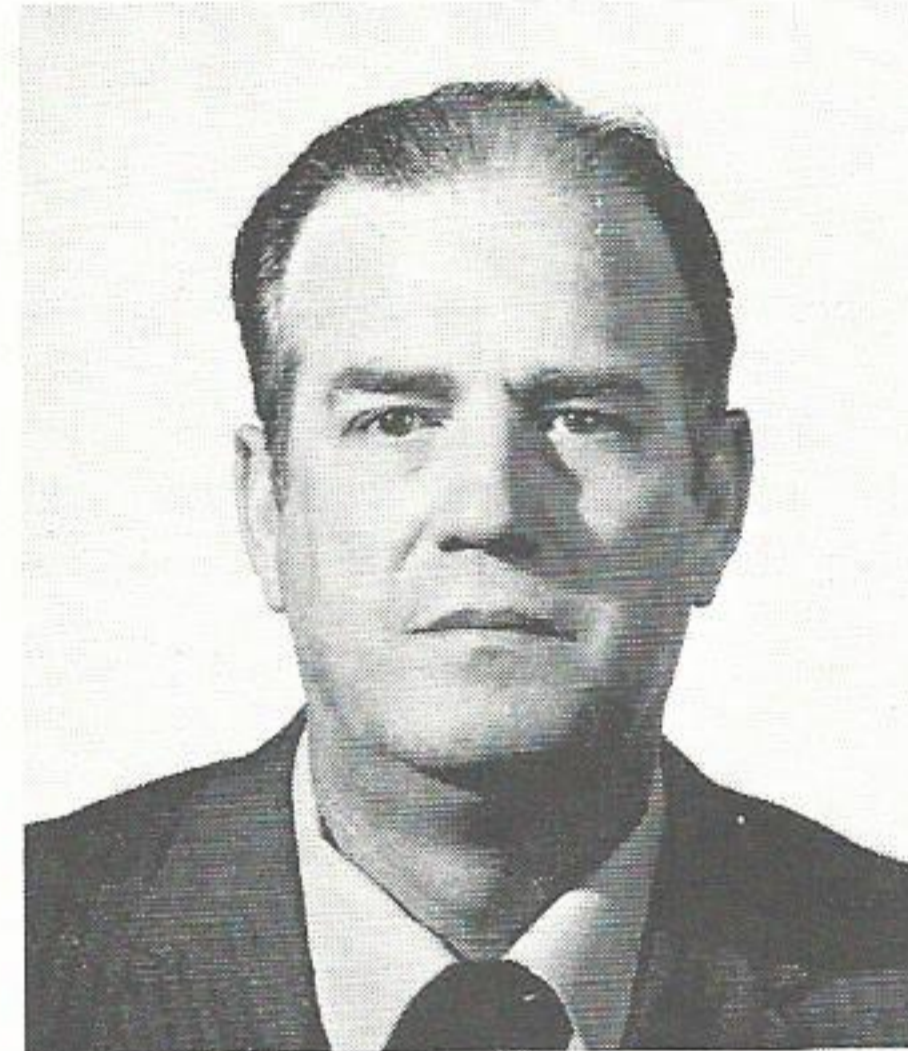


FORTY YEARS



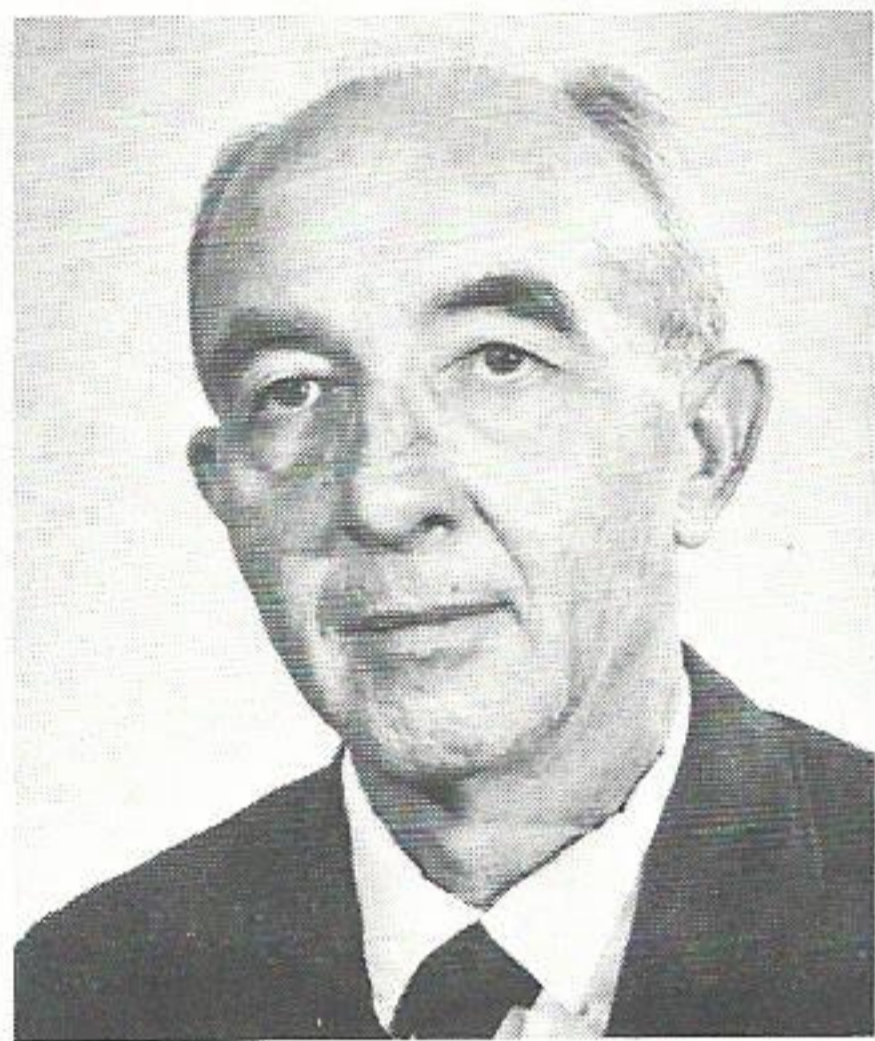
Maurice Anawaty
Distribution
Beaumont

TWENTY YEARS

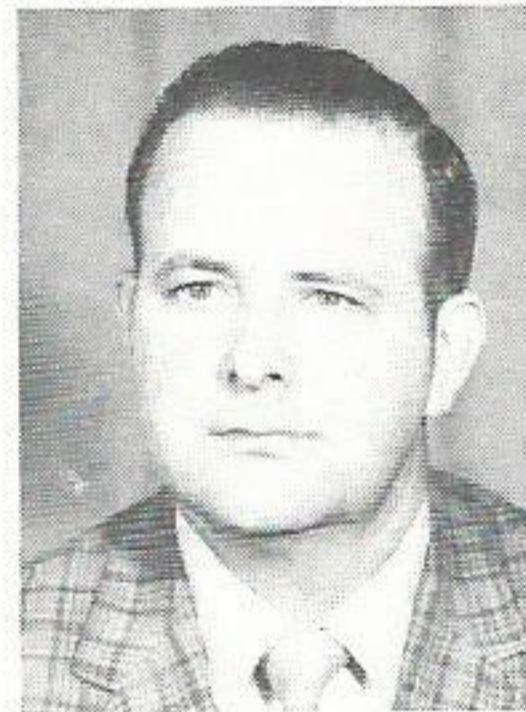


Odelon Romero
Distribution
Lafayette

TEN YEARS



Edward Maris
Sales
Navasota



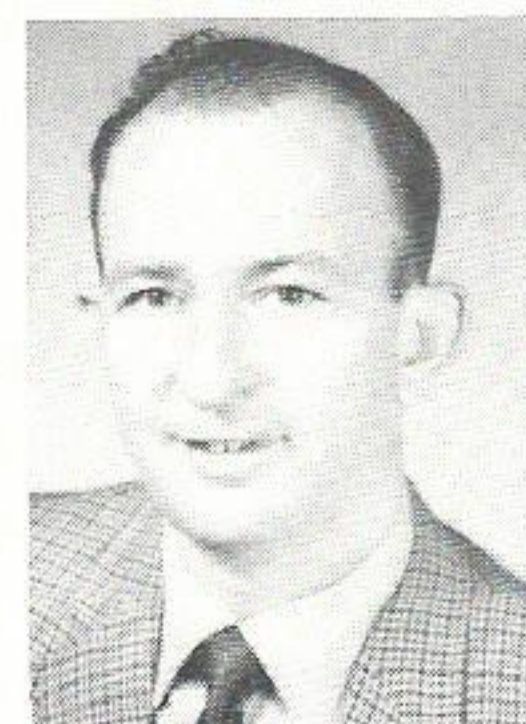
Kenneth McCullough
Production
Baton Rouge



William Reel
Distribution
Orange



John Graves
Production
Bridge City



Gene Tillery
Sales
Beaumont

Top Management Changes Keynote Major Promotions

Top management changes involving four key personnel became effective this month.

S. L. Adams, vice president-engineering and production, and **Norman R. Lee**, vice president-division operations, were promoted to senior vice presidents.

R. J. Robertson, formerly production manager, moved up to general manager-production, and **James W. Atkins**, formerly general director-engineering, advanced to engineering manager.

Mr. Adams has been vice president of engineering and production since 1969. He was elected a director of the Company in February, also effective April 1.

A native of Beaumont, he is an electrical engineering graduate of Texas A&M. He also has completed the Harvard advanced management program and the University of Michigan public utility executive program.

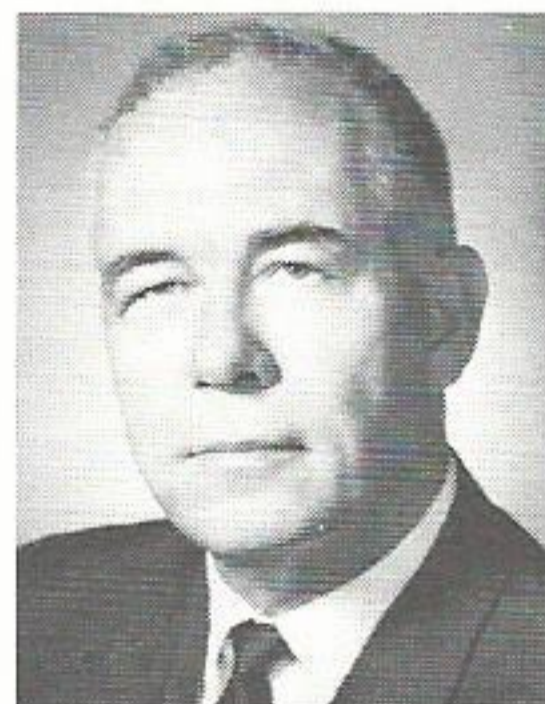
Mr. Lee became vice president of division operations in 1969. He was elected to the board of directors in 1967.

Born in Grayson, La., Mr. Lee attended LSU and later graduated from California Institute of Technology with an electrical engineering degree. He completed the Harvard advanced management program and the utility executive short course at Georgia Tech.

Mr. Robertson is a Philadelphia native and was graduated from Williamson Trade School in Media, Pennsylvania. He joined the company in 1938 and progressed through various production posts, including both construction and operations, and has been system production manager since 1964. He completed the Harvard management program in 1950.

Mr. Atkins, an electrical engineering graduate of Georgia Tech, was employed by the company in 1938. He worked in various engineering and operating jobs in the Beaumont, Western and Port Arthur divisions and was named general director of engineering in 1969. He completed the Harvard advanced management program and the utility executive short course at Georgia Tech.

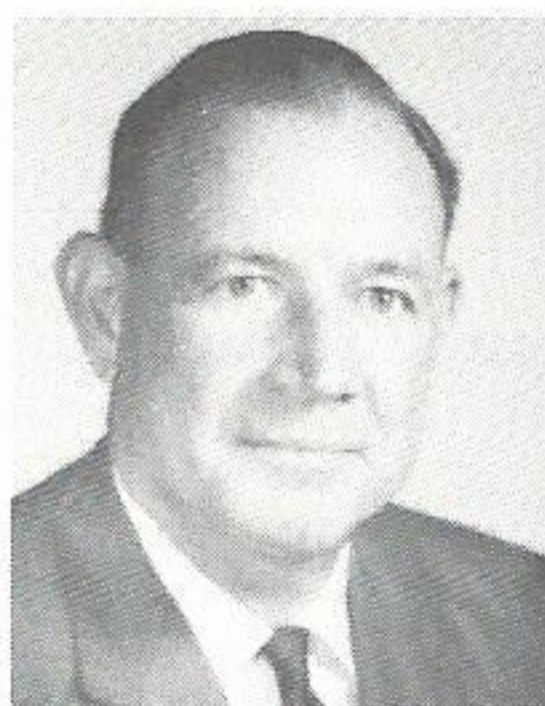
The responsibility changes effected by the promotions were made to effect a broader distribution of corporate duties among key executives and to provide a flexible executive organization capable of adjusting to expected changes in the future.



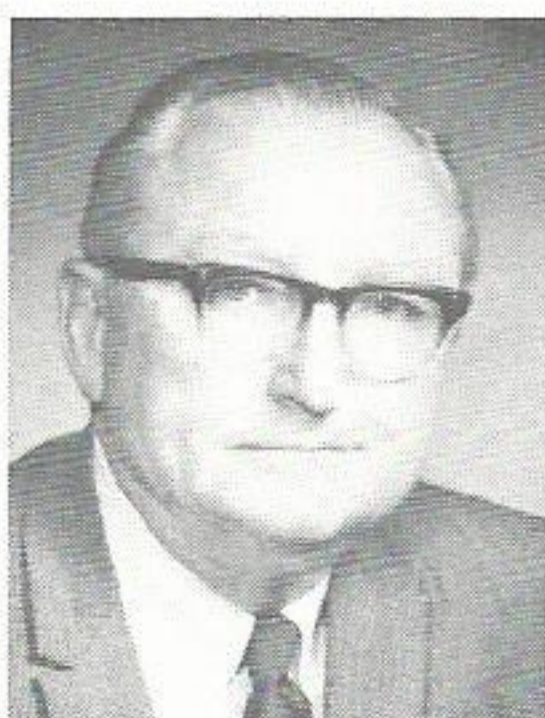
S. L. Adams



Norman R. Lee



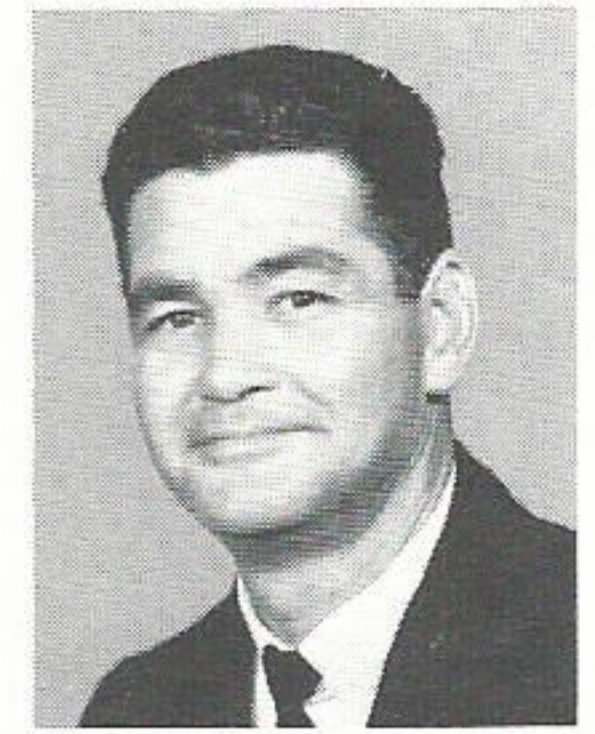
R. J. Robertson



James W. Atkins

PROMOTIONS

Harry O'Quinn



Harry O'Quinn, formerly substation mechanic, has been promoted to utility foreman, T&D Substation, Lake Charles.

Mr. O'Quinn is a graduate of Sulphur High School and served in the Army from 1954 to 1956 in Korea.

He joined the company in 1956 as a helper in Lake Charles T&D. He also has been an apprentice, and progressed through various classifications as a substation mechanic.

He is a member of Veterans of Foreign Wars Post 8107 at Sulphur, vice president of the Sulphur Volunteer Fire Department and committee chairman of the Bayou Council Girl Scouts, Troop 10.

Married to the former Norcille Guidry of Church Point, the O'Quinn have three daughters. They are Dorlena Marie, 12, Karan Ann, 10, and Penny Diane, 8, all students at Our Lady's School in Sulphur.

The family attends Immaculate Conception Catholic Church at Maplewood, La.

Julius R. Poole has moved up from primary and special tester to utility foreman, substation, Relay and Meter in Port Arthur T&D.

Mr. Poole, is a 24-year employee of the company, having started out as a T&D helper at Port Arthur in 1946. He has worked as an apprentice meterman and moved up through various classifications in that position. He also has served as a secondary power tester.

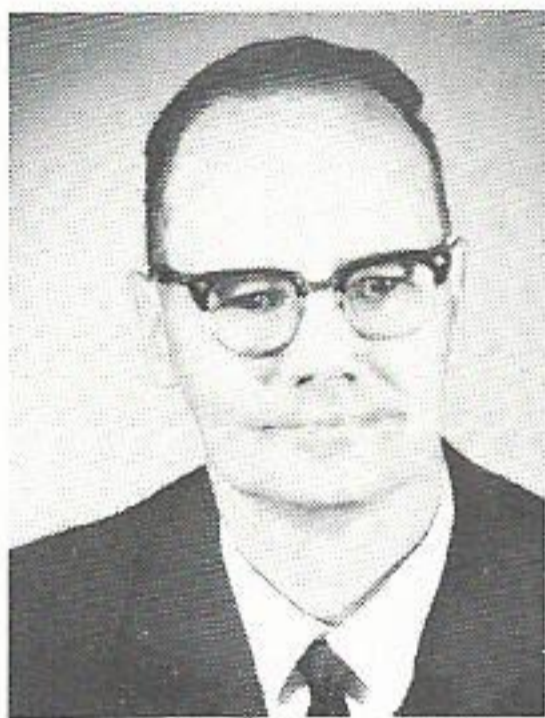
A native of Starks, La., he graduated from high school there. He served with the Navy for 3½ years during World War II and is a member of the Hamilton Smith Post, Veterans of Foreign Wars.

He is married to the former Bernice A. Boudreaux of Maurice, La. The couple's two children are Rhonda Carleen, 17, a student at Thomas Jefferson High School, and Ronald Chadwick, 3½ years old.

The Pooles attend St. James Catholic Church.

Roy J. West

Weldon L. Smith



Two Louisiana Station employees moved up during the month.

Roy J. West, formerly general maintenance supervisor, was named plant superintendent, and **Weldon L. Smith** advanced from chemist to general maintenance supervisor.

Mr. West, an engineering graduate of Texas A&M University, joined the company in 1958. He advanced through several engineering positions and transferred to Baton Rouge in 1965.

A native of Childress, Texas, Mr. West is a member of the Louisiana Engineering Society, the American Society of Mechanical Engineers and the Baton Rouge Aggie Club.

He is married to the former Martha Zimmerman of Atlanta, Ga., and the couple has two children.

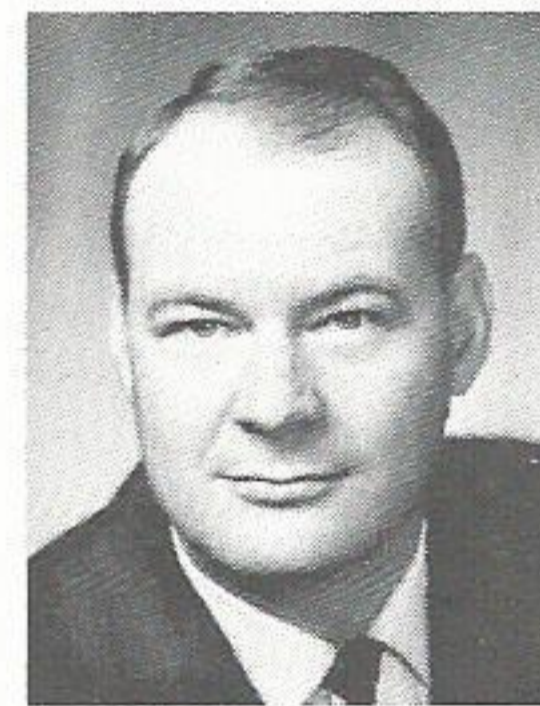
Mr. Smith was employed as a chemist at Beaumont in 1960. He started out in the Production Department. He was transferred to Baton Rouge and promoted to chemist in 1965.

Born in Jasper, Texas, Mr. Smith is a graduate of Lamar Tech. He is an Army veteran and a loaned executive in the 1970 United Givers campaign at Baton Rouge.

Married to the former Alice Jones of Beaumont, the Smiths have three children. The family attends St. Luke's Episcopal Church.

Charles A. Estes

Julius R. Poole



Charles A. Estes has been promoted from primary and special tester to meter and service foreman in Navasota T&D.

Mr. Estes, a native of Merryville, La., has been employed by the company since 1946. He is a graduate of Kirbyville High School in Kirbyville, Texas, and is a three-year veteran of the Navy.

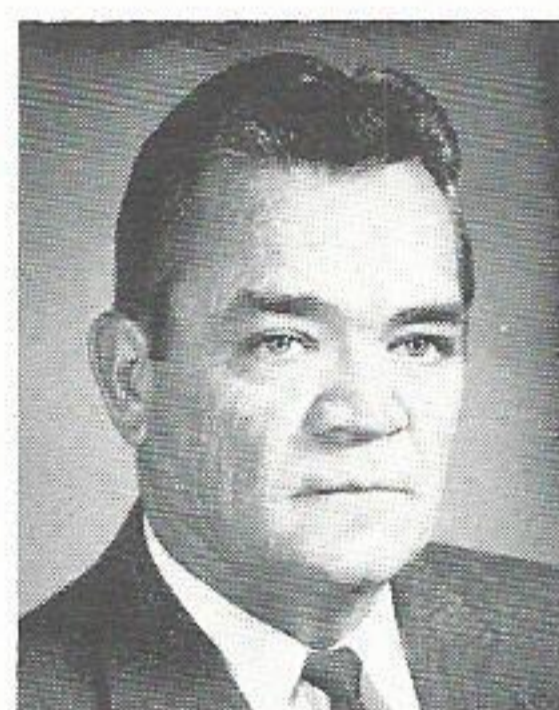
He joined the company as a meterman helper at Beaumont and came to Navasota in 1948 as meterman apprentice. Later that year he moved up to meterman. He also has served as a secondary power tester.

Married to the former Mary Athalee Dupuy of Colfax, La., the couple has two children. They are Frederick Allen Estes, 20, a sophomore at Blinn Junior College in Brenham, Texas, and Katherine Ann Estes, 17, a senior at Navasota High.

The family attends St. Patrick's Catholic Church at Navasota.

Goree Matthews

James E. Stout



Ray Meyers



Three major personnel realignments were announced in the Western Division this month.

Goree Matthews, formerly local superintendent at Calvert, Texas, has been promoted to district superintendent in Navasota; **James E. Stout**, replaces Mr. Matthews at Calvert, and **Ray Myers**, formerly serviceman at Calvert, moves up to district serviceman at Somerville, Texas, filling the post vacated by Mr. Stout.

Mr. Matthews is a native of Navasota and attended public schools there. Active in civic affairs, he is a former president of the Calvert Chamber of Commerce and is currently serving on the board of directors. He is a member and past president of the Calvert Lions Club, an alderman and mayor pro-tem of Calvert, chairman of the Salvation Army board and worshipful master of the Calvert Masonic lodge.

He is married to the former Phyllis McCarty of Humble, Texas, and the couple's son, Ronald, is a high school teacher at Weslaco, Texas.

Mr. Stout, a Conroe native, joined the company at Conroe in 1948. Since coming to Somerville in 1956, he has been active in civic work, having served on the city council

and as mayor. He also is a member and past president of the Somerville Rotary Club, former secretary and board member of the Somerville Chamber of Commerce and a former board member of the Brazos Valley Economical Development Association.

Mr. Stout and his wife, the former Adele Jordan of Willis, Texas, have two daughters. They are Carol, a Blinn College student, and Debbie, who attends Somerville Junior High.

Mr. Myers is a graduate of Kirbyville High School in Kirbyville, Texas. He is a Navy veteran, having served three years during World War II. He is a member of the Refrigeration Service Engineers Society of Waco, Texas, and is active in the First Baptist Church of Calvert.

Married to the former Jo Ann Stoneham of Navasota, the couple has one child, Felicia Rhea.

RETIREMENTS

Starley B. Farrar will retire from the company effective May 1 after



27 years of service. He started in Baton Rouge as a helper in 1943 and progressed to master repairman in the Production Department.

Mr. Farrar was born in Deerford, La. and attended Zachary High School. His mailing address will be Star Route, Box 349, Zachary, Louisiana 70791.

Samuel Arceneaux retires May 1 from our T&D Department in Jennings, Louisiana.



He started with our firm in 1936.

A native of Jennings, he and his wife, the former Winnie Junius of Rayne, Louisiana, will reside at 1005 South Main St. in Jennings. They have no children.

The Arceneauxs are members of the Union Baptist Church where Mrs. Arceneaux teaches Sunday school. Hut Reed, district superintendent, said, "Sammie is noted for the extensive vacation trips he takes each year. He has visited such places as Cuba, Hawaii and all parts of the United States."



In Beaumont and Baton Rouge

Golf Tournaments Planned for May 29

May 29 has been set as the date for the 14th Annual GSU Employees Memorial Day Golf Tournament. The tournament will be staged at Tyrrell Park Golf Course in Beaumont starting at 8 a.m.

Chairman for the event is Luther Risher and his committee members are: Denis Dugas, Lafayette; Roy Franques, Lake Charles; Jim Minner, Port Arthur; Joe Snider, Orange; Bill Barksdale, Navasota; and Joe Fontana, Beaumont. The tournament is open to all GSU employees and entry forms can be obtained from committee members or by calling extension 423 in Beaumont.

Mr. Risher stated that this year's tournament will carry a \$5.00 entry fee which will cover the participants green fee, lunch and prize money. He continued by saying that the Calloway System of handicaps will be employed for the first time. This system is based on that day's round of golf and not previous scores.

In case of ties, a sudden death will be used by matching the score cards of those tied. Lunch will be served after all have finished their round of play at approximately 2:30 and prizes awarded. Relatives of those entered in the tournament are invited to attend and playground equipment is available for children.

The prizes will be in the form of various golf equipment including the annual "Foot Wedge" award for an unsuspecting golfer. All entries should be submitted by May 15.

The site of the tournament is rotated annually with the site planned for Port Arthur next year.

The 8th Annual Employees Golf Tournament sponsored by the Baton Rouge Division has been set for Friday, May 29. The tourney will be played at Howell Park Golf Course in Baton Rouge starting at 9 a.m.

An entry fee of \$4.00 covering green fee and prizes has been established with a deadline of May 20 for all entrants. The tournament under the direction of Richard Bergeron, general chairman, has established Medal Play Rules (least number of strokes for 18 holes) with handicaps set from prior scores.

Various committees have been set-up to run the tourney. Members of the Rules, Handicaps & Pairings Committee are: J. R. Breaud, Phil Levert, Buddy Nelson, and Bill Tholborn. Finances will be handled by R. M. Knobloch. The Prize Committee members are Marcus Andrews and Glenn Stokes. Publicity is charged to Bill Hays and Walt Wright. Ben Campo and J. B. LeBlanc will act as Starters.

Department Representatives are Buddy Nelson: Meter Service, Engineering and Appliance Repair Departments; Fred Eubanks: Line, Gas and Choctaw Center Departments; Bill Foulborn: Line, Substation and Government Street Departments; Walter Benjamin and Jim Jones: North Blvd. Office; Ken McCullough: Louisiana Station; and Gary Diamond: Willow Glen Station. Entry blanks are to be sent to these representatives.

The tournament is open to all GSU Employees regardless of the division in which they work. Prizes will be awarded at the end of the tournament and a "Hole-In-One" Contest will be conducted on Hole No. 18.

General Chairman Bergeron expressed hope that a large number of employees would enter and bring their wives and family to act as a gallery.



SPRING TOUR TIME

Dear Mr. Sandefur,

We enjoyed having a visit to the power plant. All of the sixth grade liked it, and learned more about electricity and how it is generated. We hope you may be able to come and visit our school one of these days and have the pleasure that we had. Our guide was real nice to us and showed us all the control rooms. The best thing I liked was how the furnaces boiled up the water to make steam to turn the turbines. And thanks again for letting us visit the power plant.

Yours truly,



from Baton Rouge to Bridge City . . .

April showers bring May flowers and beautiful weather to our service area. And with this weather our doors fling open to school and club groups to visit our various power stations.

The machinery of automation makes our power facilities an interesting and educational experience. Yet, many of our tours include our office buildings with our space age computers and our home service demonstrations.

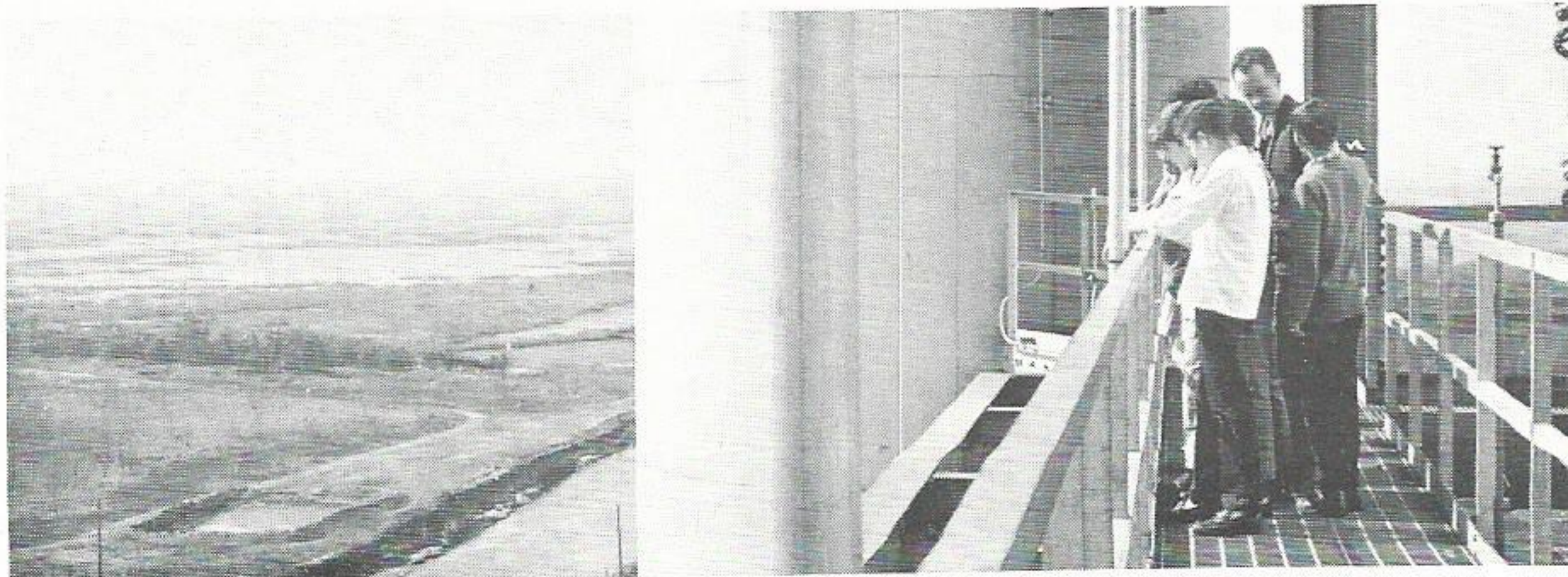
A 9th grader from Baton Rouge wrote, "Well, if I were to change my mind to be a worker at one of those places, I think I would prefer Gulf States because the machines looked fun but difficult to work."

Students, science clubs and even garden clubs find our facilities of benefit. They learn how our company operates and discover how electricity is made. Our employees are quick to answer questions and keep everyone involved.

Some of the favorite tour spots include our office and service center facilities and three power generating stations: Willow Glen Station in Baton Rouge, Roy S. Nelson in Lake Charles and Sabine Station in Bridge City. Later this year, there will be Lewis Creek Station in Conroe.

So, if your group needs an educational program regardless of the age or vocation, take a tour of GSU. The weather is fine. Here the candid camera shows a few scenes of recent tours.

John Cole shows students the view from top of Sabine Station.



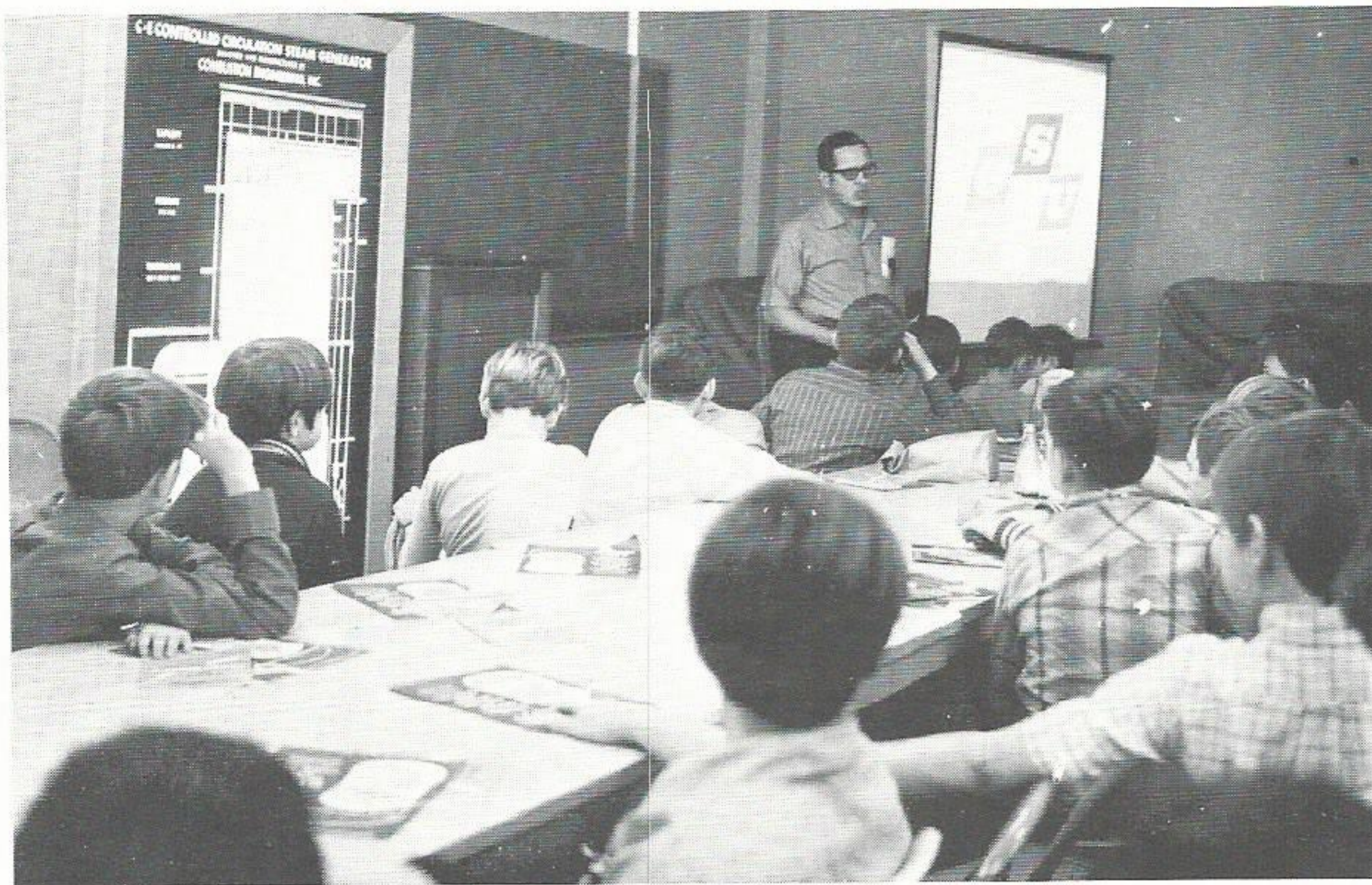
Tour group at Willow Glen Station.

Dear Mr. (W. B.) Reynolds

I would like to thank you for your time and effort which helped to make our recent field trip such a big success. It was a pleasant and enjoyable learning experience for all of my 80 students. They were especially impressed by the modern accounting department and the computer terminals.

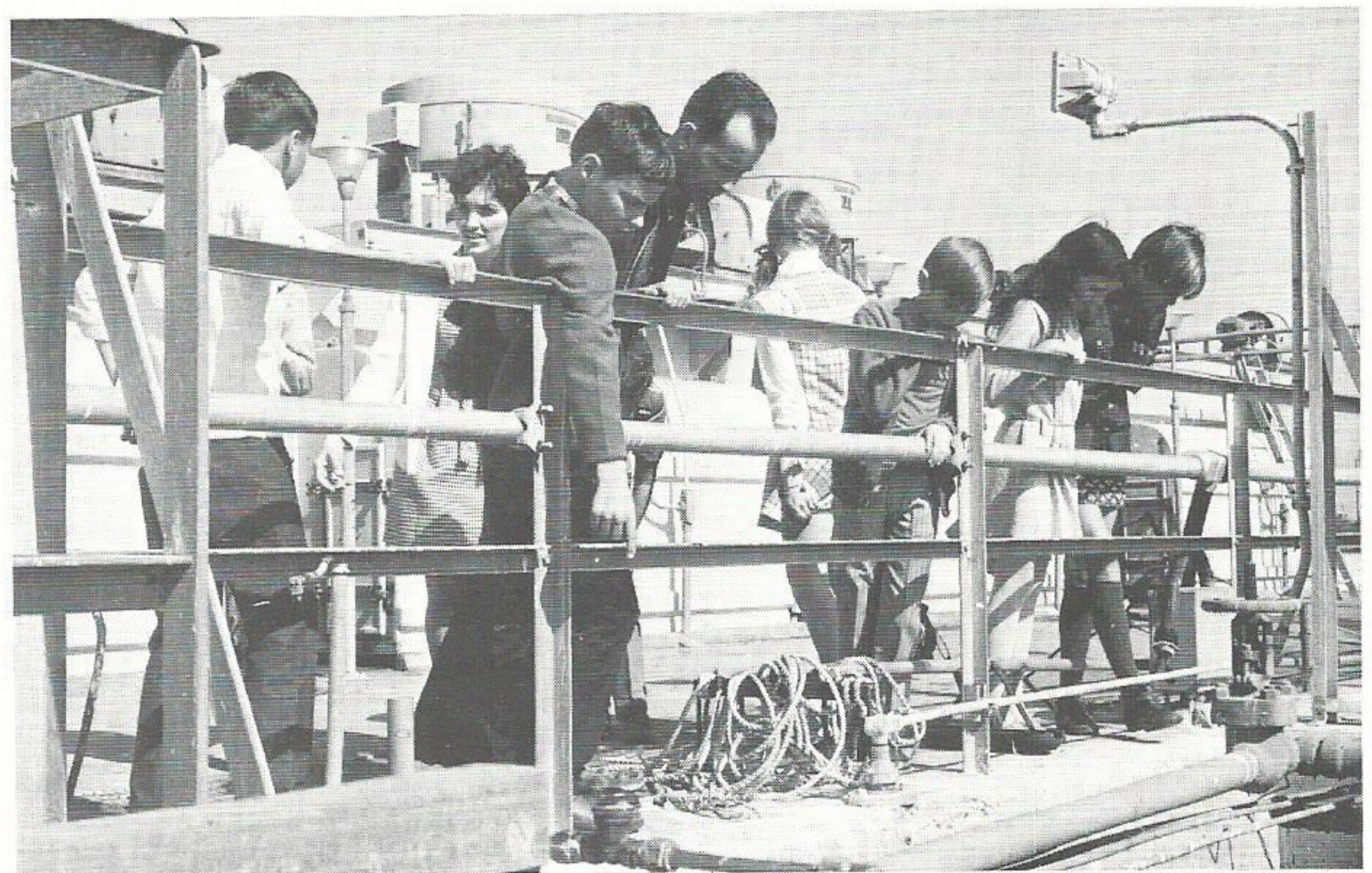
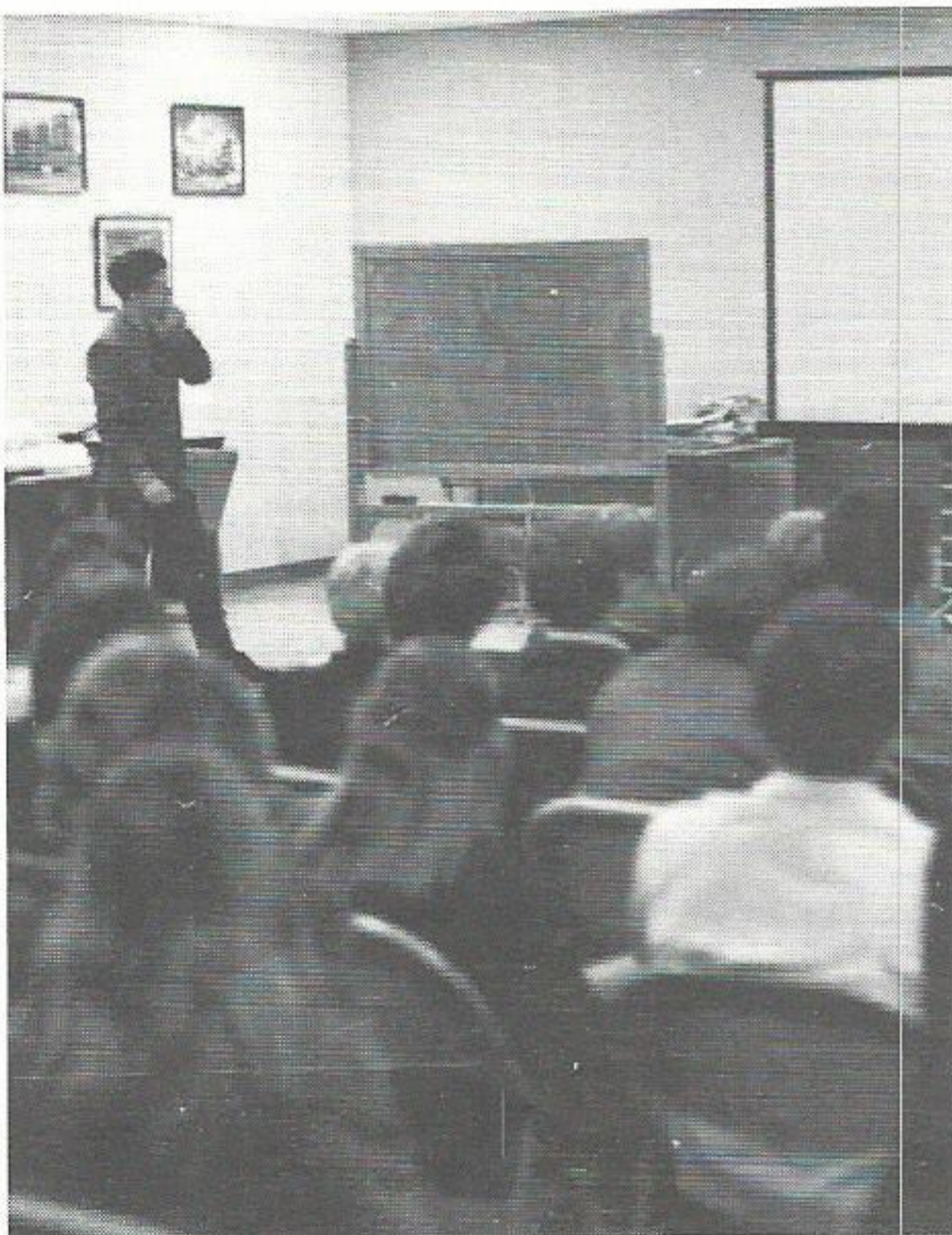
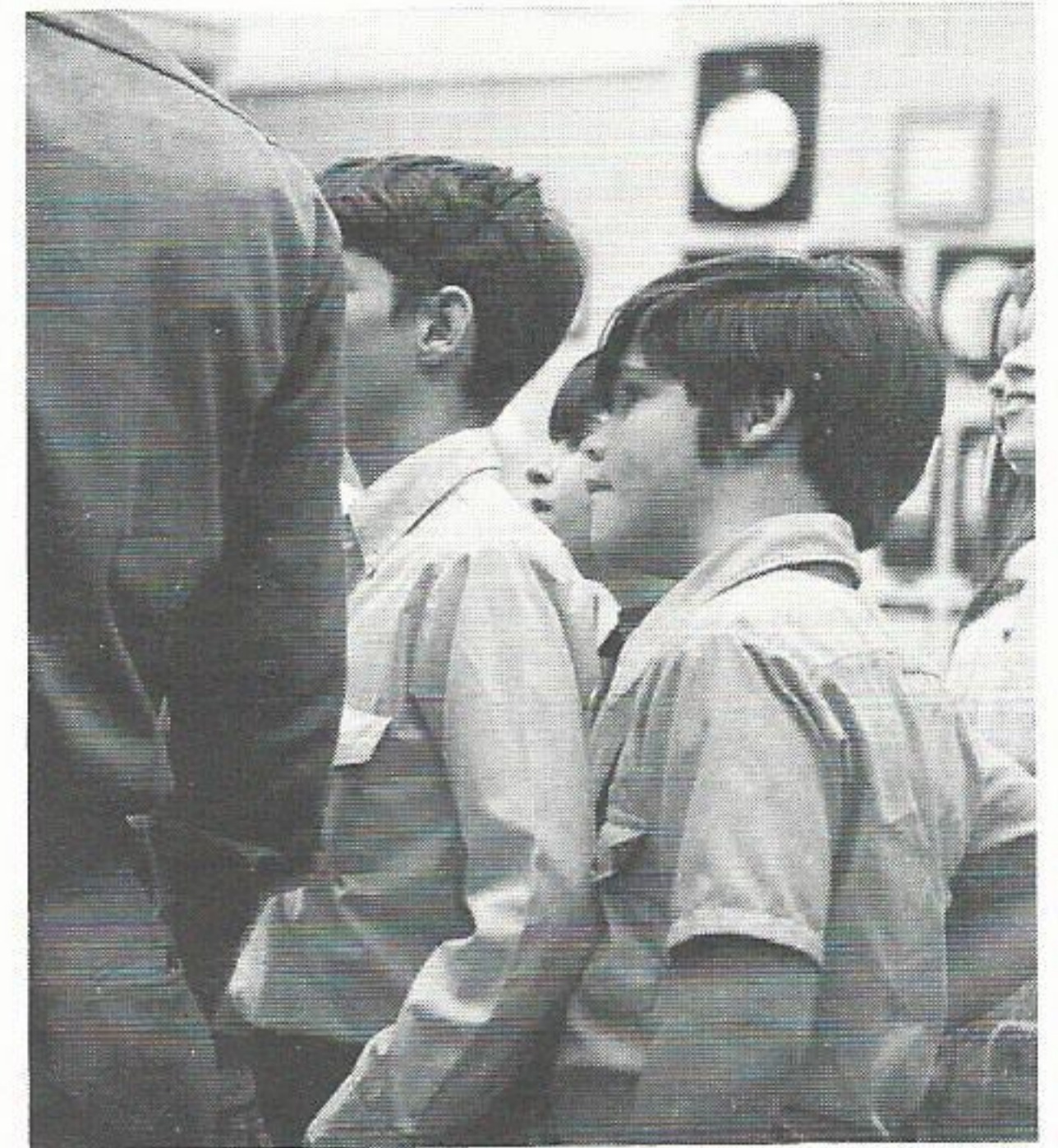
As always, it was a pleasure visiting our Gulf States friends. Thank you for helping to enrich our education program.

Sincerely yours,
Marie E. Gary



Above Morris Sandefur and below Stewart Chaney lecture on GSU to tour group.

The interest of youth.



Above John Cole shows students the intake canal at Sabine Station.

Gentlemen:

The members and sponsors who participated in the Glasgow Science Club excursion to Gulf States Utilities Power Plant would like to express appreciation for the guided tours Friday, March 13, 1970. The facilities and various kinds of equipment greatly impressed the students and was very interesting and informative.

A special thanks to Mr. Wright and Mr. Chaney for their guidance and attention throughout the tours.

Sincerely,
 Robby Beacham, President
 Glasgow Jr. High
 Science Club



Dear Mr. Sandefur

I too would like to thank you for the time and effort you put forth to make our trip so worthwhile. I think that you will learn from the enclosed notes that many different things were learned on this outing, all pertinent to a good education. I think you will find that my students were most impressed with the generosity extended to them by your staff.

Sincerely,
 Patty Cantella
 Memorial Jr. High School
 Beaumont, Texas

LETTERS

From employees, customers and friends of GSU

NAVASOTA

Dear Mr. (Connie) Winborn:

I want to thank you and your Company for the use of the stoves that Noble Hughes brought for us to use at our Pancake Supper. I hope that some time I may be able to thank you in person.

Sincerely,
Casper Balke
President of Shrine Club
of Brenham, Texas

BEAUMONT

Dear Mr. Johnson:

Thank you for your assistance with our study of electricity in equipment class. The girls enjoyed the field trip and it was good of you to help us in this way.

Sincerely yours,
Louise P. Turner Ph.D
Dept. of Home Economics
Lamar State College

Dear Mr. (Norman E.) Morrison:

In behalf of the 4-H girls who participated in the "Foods for Friendship" Food Show, I would like to thank you for the use of your auditorium. The facilities were excellent for our program and we sincerely appreciated your individual and personal concern.

Sincerely,
Mrs. Ramona E. Fails,
Assistant County Home
Demonstration Agent

BATON ROUGE

Dear Sirs:

I have been reading "PLAIN TALKS" for a long time but I have enjoyed the February issue 1970 more than any of the others. Your concise report about the progress your firm has made from 1888 to 1970 is not only interesting but inspirational. I am using some of the recipes given by Miss Sue Hoffpauir also. They are nice.

I say congratulations to the personnel of the Public Relations Dept. of Gulf States Utilities Co.

Yours truly,
R. H. Paul, Sr.
Paul's Electric Shop

Insurance Gets Rate Hike

The Travelers Insurance Company has increased our premiums for Major Medical Insurance effective April 1. This is the first increase in Major Medical premiums since October 1, 1965, and is caused by the high volume and cost of major medical claims that have been processed.

The old monthly premium for an employee only was \$1.76 with the new rate being \$2.82. For employee's dependents, the old rate was \$1.85 while the new rate will be \$2.96. As these figures show, the increase will be \$1.06 per month

for individual employee coverage, \$1.11 per month for dependent's coverage and \$2.17 for combination coverage.

Employees who have individual coverage only will not have their monthly contributions increased since their total medical insurance premiums, including the increase, will not be in excess of the company's maximum contribution of \$10.50 per month, stated Mr. E. L. Bailey, treasurer. Other employees, who already have total premiums in excess of the \$10.50 maximum, will have their monthly contributions increased by \$2.17 per month.

METER READERS WIN AGAIN

Here's a reprint from the famous Ann Landers column that appears in numerous newspapers across the nation. We hope that you find it amusing and in that same vein, we take our helmet off to all of our meter readers.

Dear Ann Landers:

You've said a good word of waiters, maids, bellboys, police officers, airline pilots and garage mechanics. Now will you give a hand to the most abused men in America—the meter readers.

My son Elmer has been a meter reader for two years. He has been harassed, cussed out, kicked, bitten and mugged. A few weeks ago a husband came home unexpectedly, saw Elmer in the basement and mistook him for his wife's lover. Elmer was lucky to get out with his life.

People put all sorts of things over their meters so the reader can't get to them—heavy trash cans, garden implements and lawn furniture. The reader has to estimate the amount of the bill when he can't get a reading. The people complain their heads off when the bills come

and then they write dirty letters to the management saying the meter-reader is off his nut.

Please say something in your column to give these poor guys a lift. They sure deserve it.—A Richmond Mom

Dear Mom: I did my bit for meter readers a few years back when I printed a letter from a housewife who liked to do her housework in the nude. It seems she was in the basement doing her laundry and decided to take off her housedress and throw it in the washing machine. The woman suddenly noticed the pipes overhead were dripping, so she put on her son's football helmet which was lying in the corner. There she stood, naked as the day she was born, when she heard a small cough. The woman turned around and stared straight into the face of the meter reader. He looked completely bewildered and all he could say was, "I hope your team wins Lady."

After that letter appeared in the column I had dozens of letters from mothers, who said their sons had decided on a career. They wanted to be meter readers.

GSU forms new company to operate varied business

Creation of a new company, Varibus Corporation, a totally owned subsidiary of Gulf States Utilities Company, was announced this month by President Floyd R. Smith.

According to Mr. Smith, after many months' study, the new company is being organized to develop and operate various businesses outside the parent company's main occupation of the transmission and distribution of electric power in Southeast Texas and South Central Louisiana. Some of the activities contemplated may, however, be presently employed as an adjunct or supporting phase of our current operations.

The board of directors of the new company comprise Mr. Smith, Samuel L. Adams and Jerome M. Stokes. Officers of the Varibus Corp. will be Mr. Stokes, president; J. O. Robichau, vice-president, and R. W. Jackson, secretary-treasurer. All of these men have current positions in our headquarters office in Beaumont.

Initially, Varibus Corp. will enter the electronic computer field in which our company has been a pioneer. Varibus will, with this first step, take advantage of systems the parent company has already developed and is operating under its policy of constantly modernizing and streamlining facilities to assure customers of top quality service.

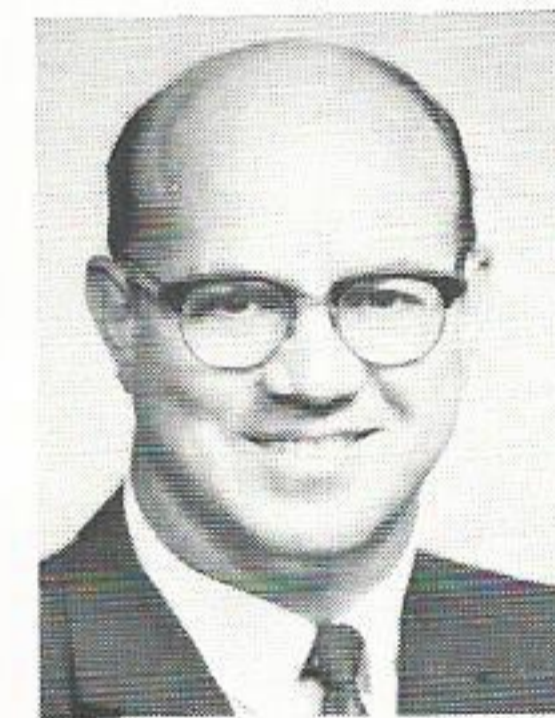
"Although the computer soft-wear business just happens to be the forerunner of Varibus Corporation's proposed activities, it is a good example of what we mean by systems already developed and being used in the normal operation of the company," Mr. Smith said. "We have been engaged in computer work since 1952, and over this eighteen-year period the personnel involved have developed a knowledge of the busi-



J. M. Stokes



J. O. Robichau

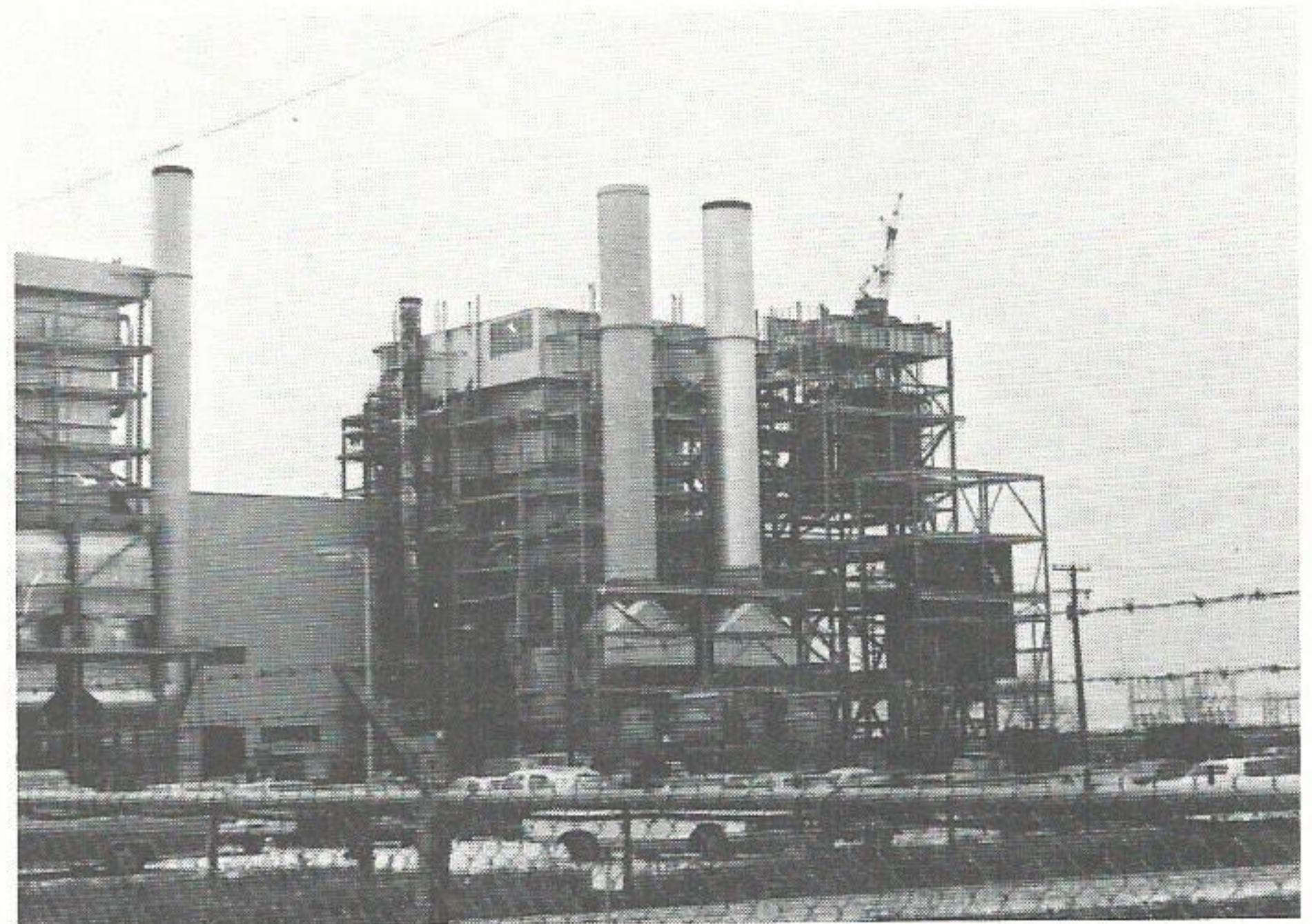
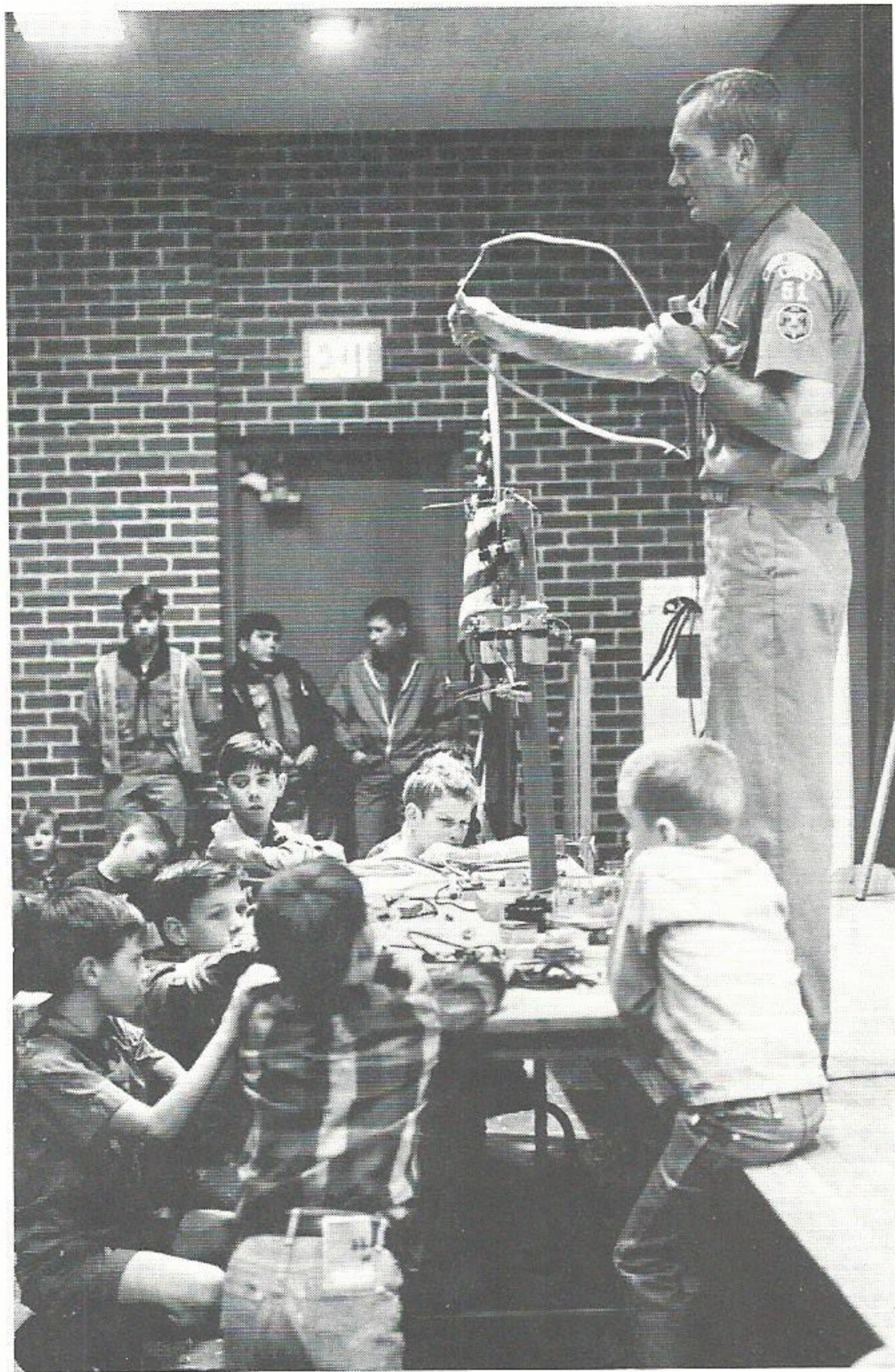


R. W. Jackson

ness that can be put to profitable use by other utilities and businesses. Experienced personnel and ultra modern equipment will enable Varibus to develop computer programs for the parent company and other businesses but, initially, these will be directed to utility operations," he added.

Mr. Smith indicated that other types of internal operations that our company conducts as part of its business will be studied to determine whether they can be operated, expanded or developed more advantageously by the new subsidiary. Varibus Corporation is presently headquartered in our company's general office building in Beaumont.

GSU Pictorial Parade



Pictured above left is Harold Foster of our T&D Department assisting in the electrical education of over 170 Boy Scouts from the Golden Triangle area. The Scouts were working on their Electricity Merit Badge at our Port Arthur Service Center. **Bottom left** is Alton Borel telling the Scouts how electricity is made. About 40 Scouts finished the program and obtained their badges assisted by the following employees: Don Dean, Doug Watkins, Gayle Stoute, John Vandergrift, Alton Borel, Leonard Gaspard, John Phares, Harold Foster and Don Boring, all of our Port Arthur Office. **Pictured above** is the construction site at Willow Glen Station in Baton Rouge. The crane perched atop of the new 580,000 kilowatt unit caused much discussion by our personnel and visitors to the plant. The unit is scheduled for completion in early 1972.

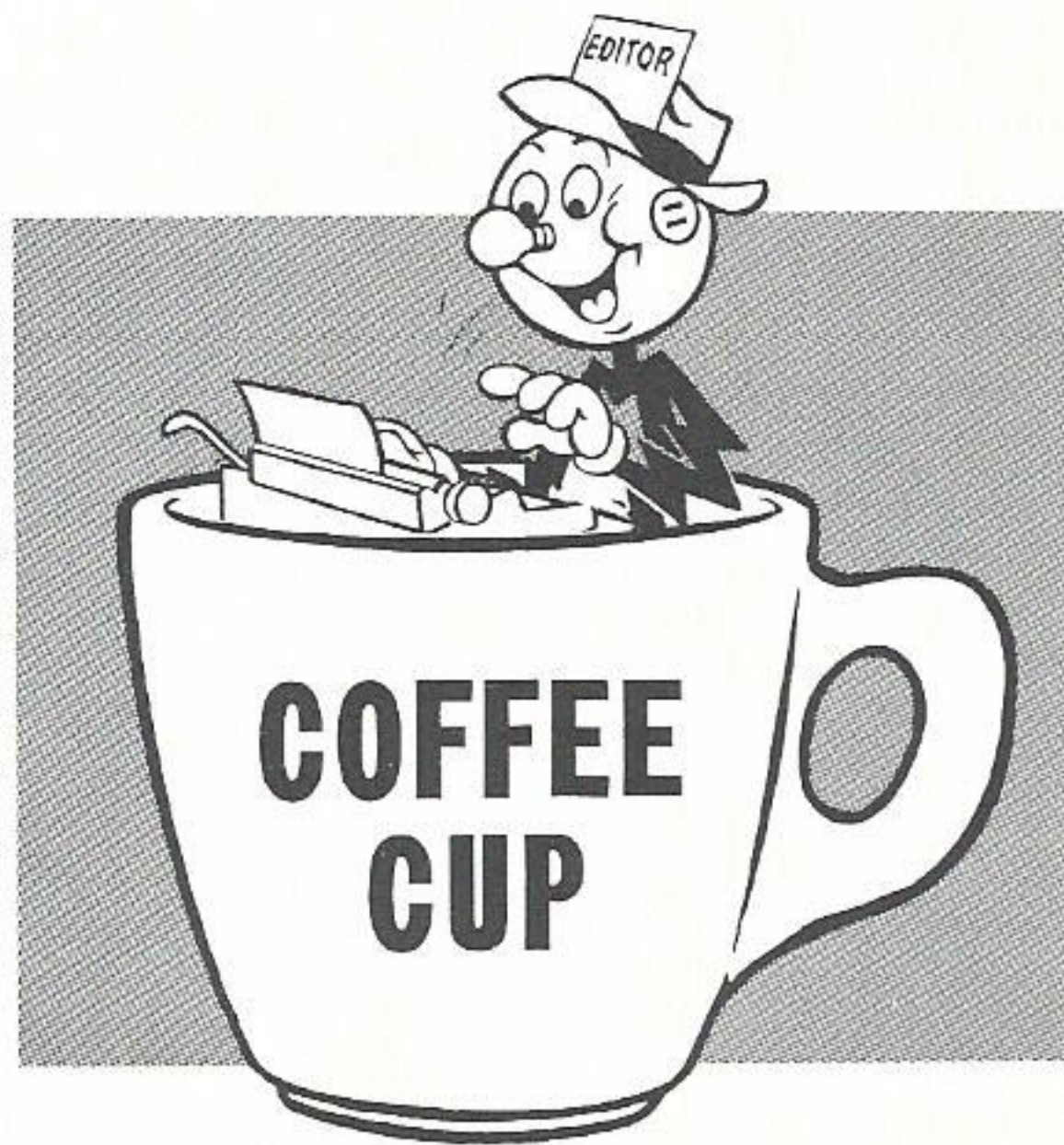
Richard Retires



Chairman of the Board Glenn Richard retired from the company on April 1 and was hosted at the general office building in Beaumont on that date. Above top, Mr. and Mrs. Richard greet guests at the reception. Center, Mr. Richard laughs at the new putter given him to help improve his golf game. He was also presented with a certificate for the entire set of clubs and given a new color TV set. Below, the Richard family watches proudly as their "hero" is presented with his retirement gifts. Mr. Richard will remain on the Board of Directors after retirement.

Below Ann Schulz accepts a proclamation from Mayor James D. McNicholas of Beaumont proclaiming April 19-25 as SECRETARIES WEEK. During the week, several events were held and bosses hosted their secretaries at a luncheon. Ok, men, if you haven't treated your secretary to lunch, you'd better watch out.





REPORTERS

If you have any news for PLAIN TALKS, simply send the information to one of the following local reporters. They will be happy to assist you in getting the material to the Editor.

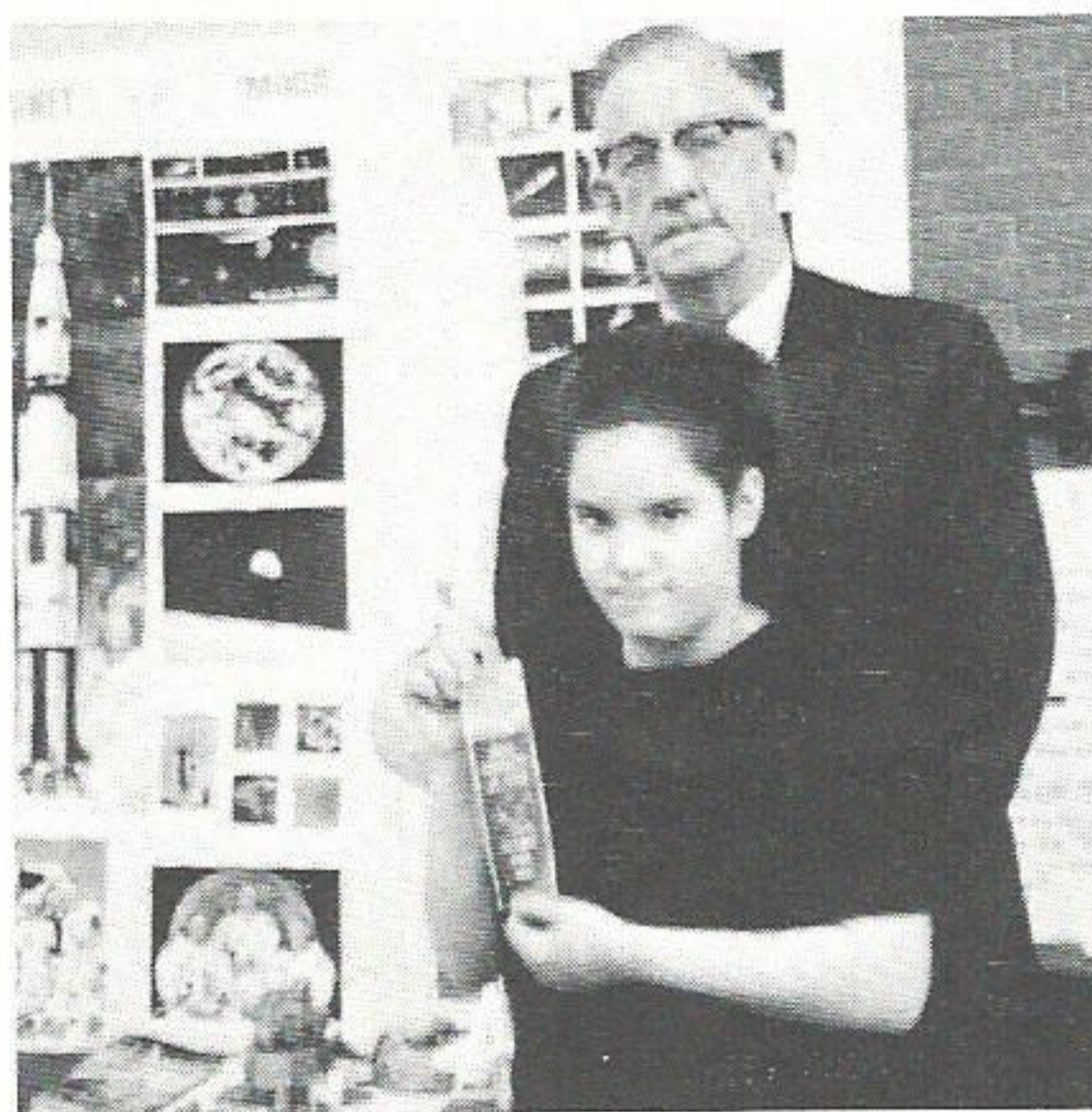
Betty Neville (Neches Station), Sue Williams (Port Arthur), Jo Ann Landry (Beaumont S.C.), Johnnie Harris (Lake Charles - T&D), Fay Denney (Lake Charles - O), Bobbie Denais (Lafayette - O), Sue Melancon (Lafayette - T&D), Pam Weston (Nelson Station), Davie Carpenter (Orange), Maxine Bell (Silsbee), Nancy Westmoreland (Beaumont), Ann Ogden (Beaumont), Edy Waltman (Beaumont), Darla McMurray (Beaumont), Walt Wright (Baton Rouge), Pearl Darbonne (Sulphur), Earl Mayfield (Jennings), Leslie Lemoine (LA Station), Janis E. Wilganowski (Calvert), Wanda H. Tinsley (Madisonville), Pat Jones (Cleveland), Priscilla Chandler (Huntsville), Frances Murray (Conroe), Betty Dicksehat (Navasota), Linda Marks (Beaumont), Nina Ruth Bay (Navasota), Dora Landaiche (Willow Glen), Opal Temple (Baton Rouge-Acct.), Margie Force (Baton Rouge-T&D), Sandra Mouch (Baton Rouge-T&D), Gwen Blackwell (Baton Rouge-T&D), Beverly Hayden (Gas Dept.), Janette Lane (Zachary), Mel Le Beau (Baton Rouge - Sales), Adele Vavasseur (Port Allen), Billy Fortenberry (Gonzales), Lorraine Dunham (Port Arthur S.C.), and Kathleen Fuller (Sabine Station).

WESTERN DIV.



Our company is represented each year on the Montgomery County Trail Ride to Houston and the big GO TEXAN Parade and Rodeo by Conroe Serviceman **B. F. Sparks**. "Sparky" is shown above riding in the parade on his horse, Smokey.

BEAUMONT DIV.



Above is **Michelle Lee Due**, daughter of Mr. and Mrs. **W. W. Due**, substation operator in Beaumont, with her Principal, Mr. Harvey Smith, of David Crockett Jr. High School, after she won 1st place in the Earth Science Fair held at the school. The 6th grader also won the privilege to enter the National Science Fair being held in Houston.



Our hat is off to **H. J. Sutton**, consulting engineer, who's article recently appeared in TRANSMISSION AND DISTRIBUTION magazine. The article is titled, "Work Can Be Performed on Lines Underbuilding Energized 500 KV Transmission Lines." The honorarium is a credit to your ability and reflects on all of our employees.

April 23 was the date for the 1970 American Power Conference held in Chicago. Various speakers from throughout the electrical engineering field spoke including **H. J. Sutton**. His topic was "Transient Pick-up in 500 KV Control Circuits." Mr. Sutton also attended a meeting of the Joint Power Generation Sponsors Committee while in Chicago. He is Secretary-Controller of the Sponsors Committee, of the Joint Power Generation Conference. Their motive is to promote papers of interest in the power generation field.

Our sympathy to the family and friends of Miss **Avonne Dumas**, service clerk, Plant Accounting Department, on the death of her father on February 25, 1970.



The fishing season is in full swing as witnessed by the above photo of (l-r) **Staci Marks**, **Rodney Marks** and **Jerry Hatchel**. Both of the men are sporting bass caught at Sam Rayburn Lake and are the daughter, husband and brother of **Linda Marks**, clerk, in our Plant Accounting Department.



Another bass is exhibited by 13 year old **Butch Spafford**, son of **Dolores Spafford**, general clerk, General Accounting Department. The 6 lb. 10 oz. beauty was also caught at Sam Rayburn.

SIGNIFICANT
60th Year
CAMP FIRE GIRLS



Malcolm Williams and Jim Turner prove that their season-ending duck hunt near McFaddin's Ranch in the Stowell area was a success. Mr. Williams is director of area development and Mr. Turner is director of advertising and public relations, both in Beaumont.

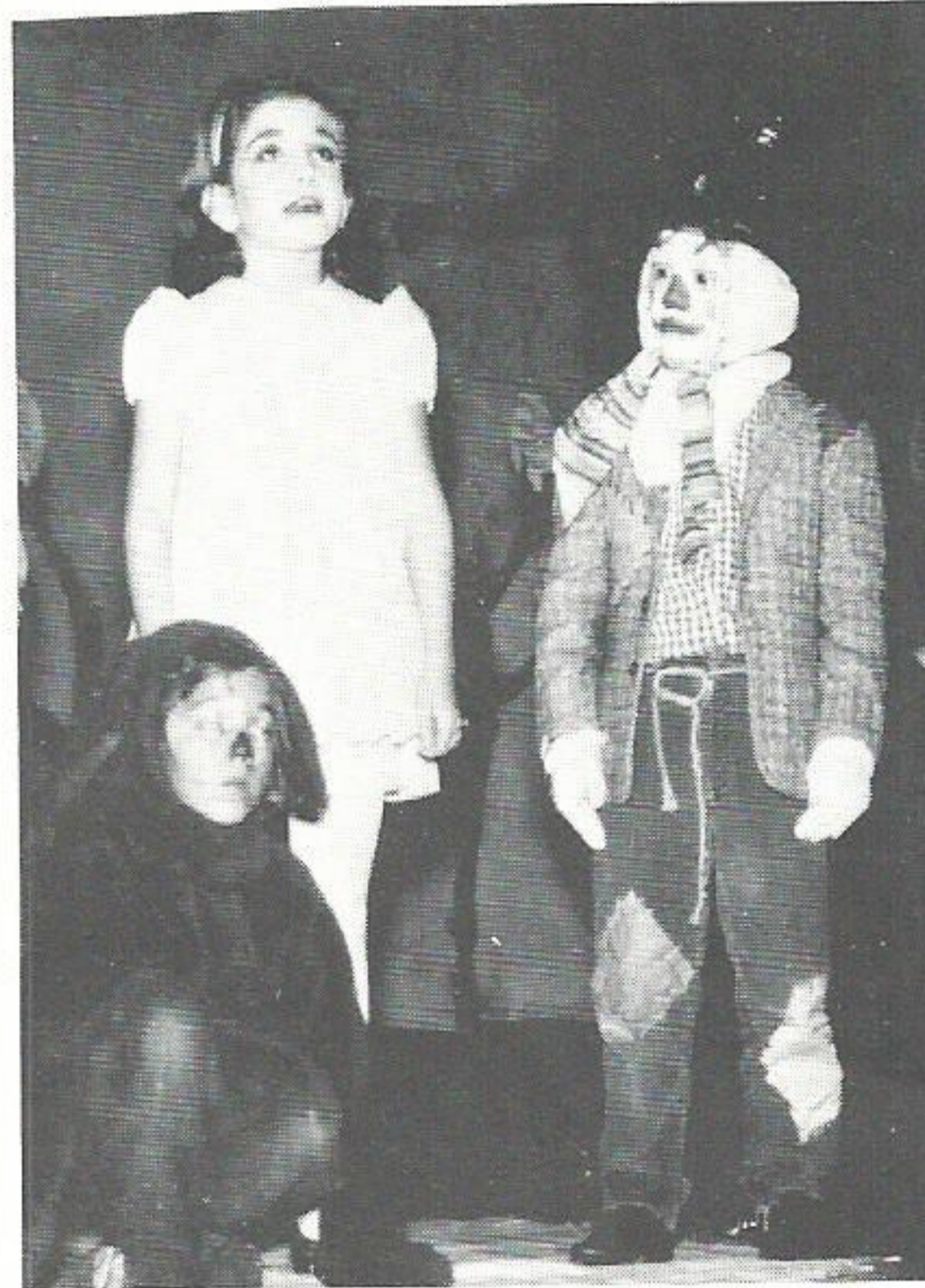


The girls in Customer Accounts feted **Virginia Collins** with this cake as she departed to await the birth of her second child. Mrs. Collins had been employed as a clerk in the department for a year and a half.

Belated congratulations to **Ben W. Reiser**, engineer at Nelson Station, on receipt of his Masters Degree in Mechanical Engineering from LSU. Mr. Reiser was previously stationed in our Gas Department in Baton Rouge before his recent transfer to Lake Charles.

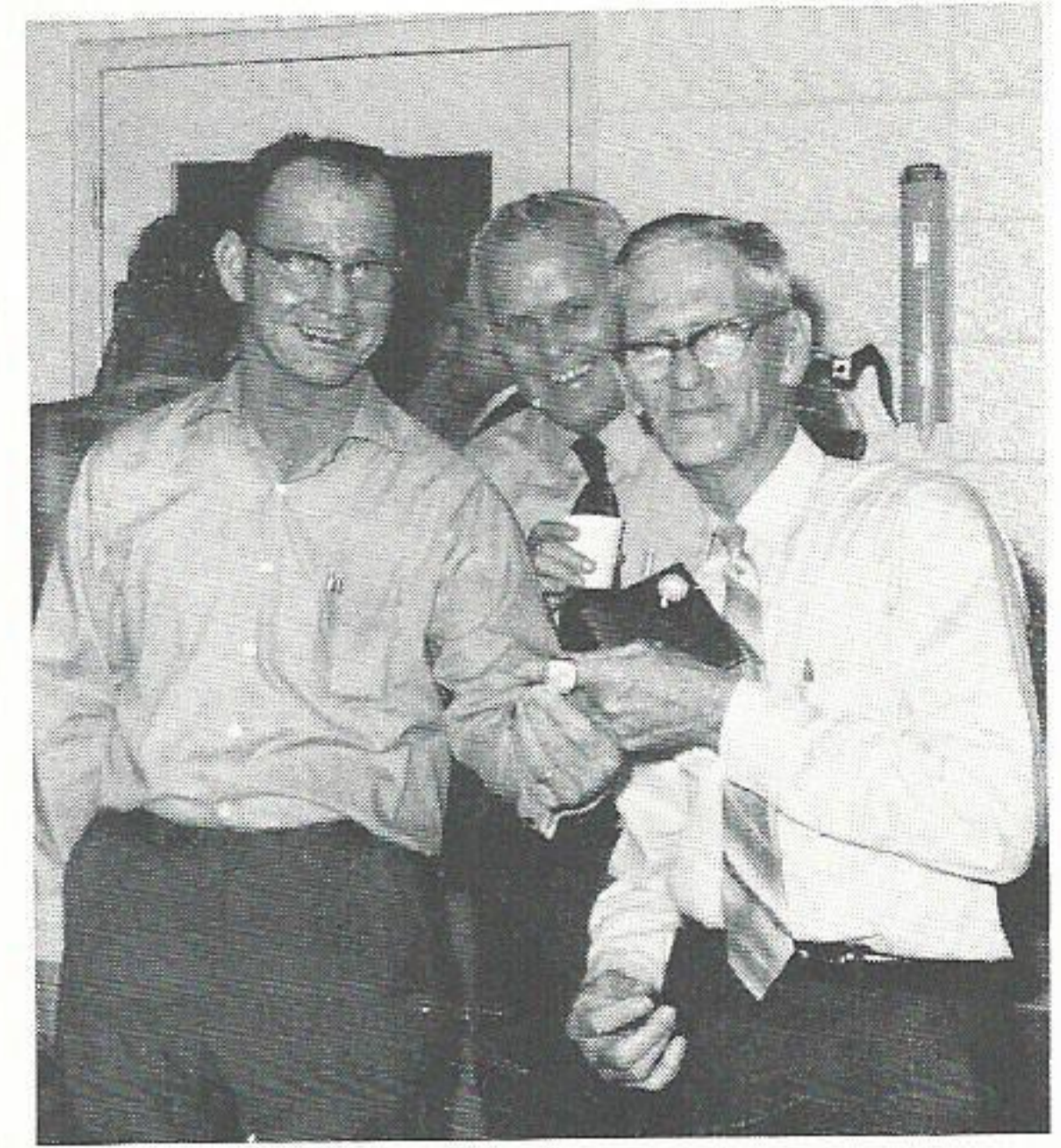
LAKE CHARLES DIV.

Our hat goes off to **Jake Andrus**, Meter Department; **Jim Doucet** and **Ken Ingals** of the Service Department in aiding a distressed customer in Lake Charles recently. It seems that this customer was having a problem with dimming lights and these employees were quick to the rescue. Their prompt and courteous action caused our customer to call **Jim Richardson**, sales superintendent, and compliment these men on their efficient manner of work. Congratulations on a job well done.



Alyson Bondurant, daughter of Mr. and Mrs. Joe Bondurant of Lake Charles, played the leading role, Dorothy, in *THE WIZARD OF OZ*, in an amateur production in Lake Charles. The performance, which played to full capacity crowds for 4 afternoons, was produced by the "Cotton Candy Players", the childrens division of the "Artists Civic Theatre" of Lake Charles. Alyson is a new Cotton Candy member this semester but was responsible for the creative art work on the cover of the Cotton Candy Production "LAGNIAPPE" last year. Alyson is eight years of age and a third grade student at Prien Lake Elementary.

Bob Derby, general substation foreman, attended a three-day ATB Training Seminar sponsored by General Electric Company in Philadelphia, Pennsylvania. On his return trip, he visited the McGraw-Edison Power System Division in Cannonsburg, Pennsylvania, to inspect a damaged transformer being repaired.



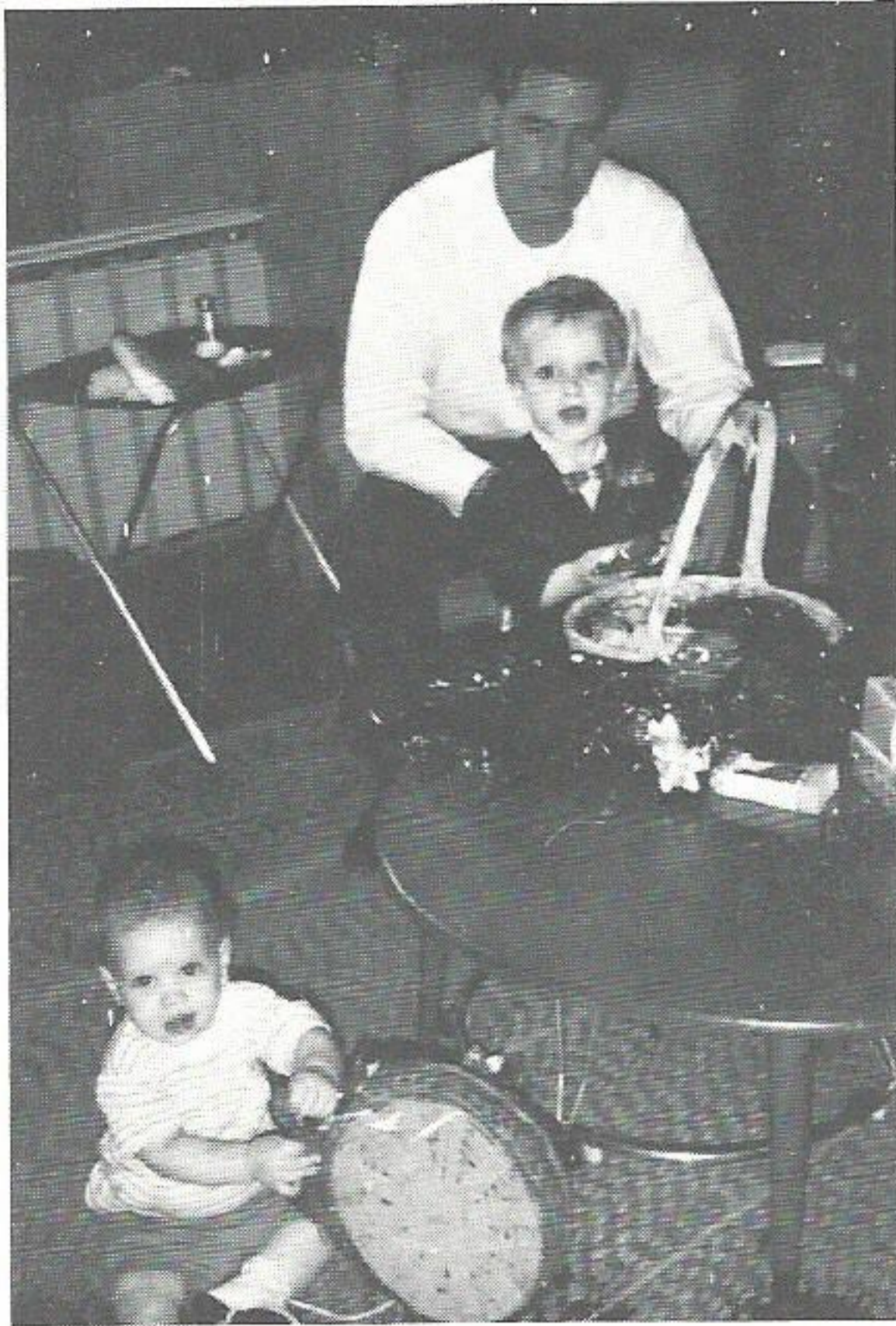
R. J. Heinen was honored with a reception held in the Substation Department at Lake Charles March 31. He was presented a watch with his name engraved on it and the dates he has worked with GSU. Employees of the Engineering Department, Line Department, Meter Department, Lafayette Substation Department, and Sulphur Office, along with the Lake Charles Substation Dept., wished him the best in his retirement. Cake, cookies, coffee, and cold drinks were served to those attending. Pictured above is **Dick Heinen** being presented watch by **Bob Derby**, gen. substa. foreman.

The Substation Department welcomes **John Simmons, Jr.**, who was recently employed as Laborer I. **Barbara Bertrand**, departmental clerk at the Lake Charles Substation Department, announced her marriage to Philip Domingues. The wedding was held April 11 in the First Baptist Church in Lake Charles.

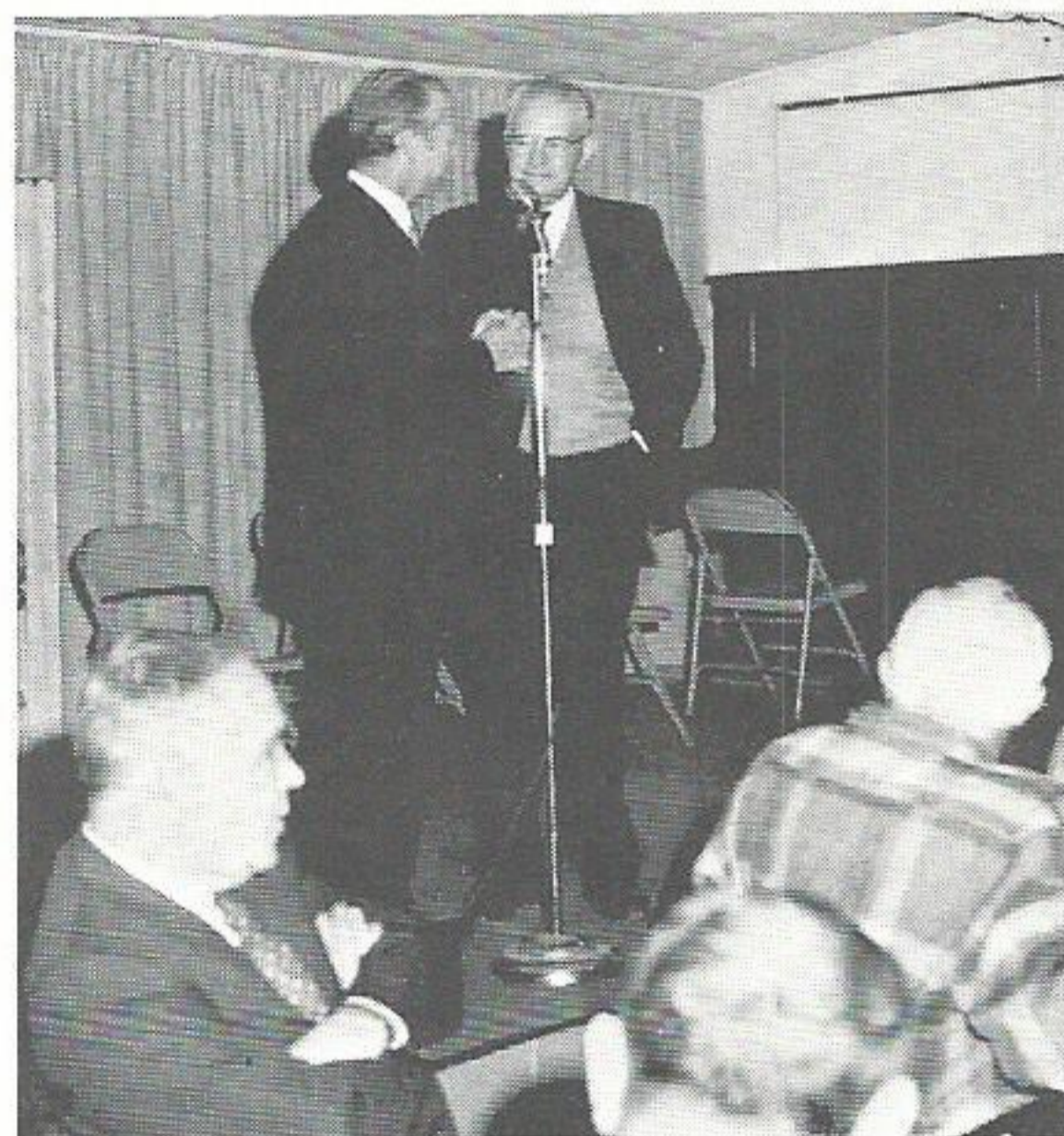
Employees of the Lake Charles Service Center wish speedy recoveries for the following employees who are in the hospital: **Francis Mathis**, assistant to the general line foreman; **Willie Dixon**, Car Washer—Garage; **Jim Martin**, lineman apprentice; and **Pete Roddy**, departmental clerk.

Several employees have been elected to the Public Affairs Research Council (PAR) of Louisiana at a recent meeting of its board of trustees. Elected to the board were: **Ed Hodges** and **Oliver P. Stockwell**, both of Lake Charles. Continuing on the board will be **H. R. Smith** and **E. H. Taussig** also of Lake Charles. Congratulations!

BATON ROUGE DIV.



The Easter Bunny made its usual stop at the home of **Robert L. Pace, Jr.**, 4th class mechanic in the Substation Department in Baton Rouge. Pictured with Mr. Pace are his two sons: Joseph Edward Pace, 9 months, and Robert L. Pace, III, 2 years.



J. D. Fleming (standing right) who retired as superintendent of Louisiana Station in April, was recently honored at a retirement party by his friends and co-workers. **Dewey Raborn**, left, was master of ceremonies at the occasion. Mr. Fleming was presented a set of golf clubs which were guaranteed to help him improve his game.

We wish to extend our sympathy to **Hazel Malbrough**, Customer Accounting in Baton Rouge, on the death of her sister, Mrs. Pearl Young, who died March 17, 1970.

Page Twenty

Vacation spots were reported for several Customer Accounting employees. **Esthel Cavell** went to Nassau in the Bahamas over Easter. **Nancy Sanchez** and her husband, Roland, had a wonderful trip South of the Border. They made stops in Taxco and Mexico City before returning to Baton Rouge.

Linda Allen is active with the Baton Rouge Little Theatre with many of the behind the scenes chores. The Little Theatre group will present "The Sound of Music" as the summer musical.



Scot Shaw, son of **V. M. Shaw**, Baton Rouge Division Manager, proudly displays an attractive string of bass caught on a recent outing. The location of the catch was not made public.

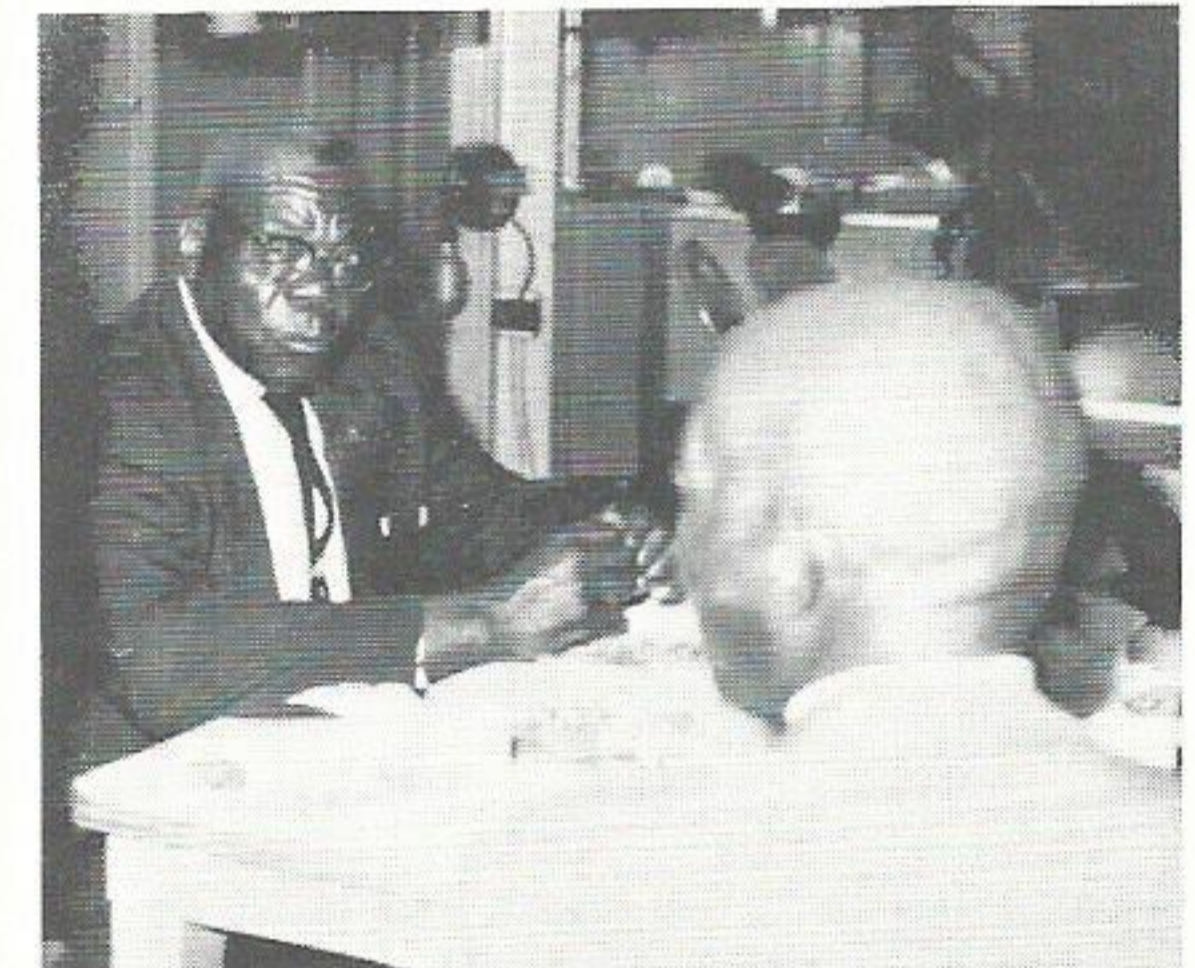


Kathy Wilbur opens her farewell gift at the Baton Rouge Office on her last day before her transfer to the Denham Springs Office. In the background are: **Lil Harrell**, **Martha Reeves**, **Lorraine King**, **Arlene Laspe**, **Barbara Hyatt**, **Glenda Ammons**, **Kathy Heasler** and **Brenda Clause**.

**BE A
PLUS PERFORMER
IN 1970**



Debbie Patin is shown as she opens a number of gifts for the baby. **Debbie Raub**, **Lorraine King**, **Phyllis Rabalais**, **Linda Allen**, **Geri Elisar**, **Betty Smith**, **Dottie Fussell**, **Arlene Laspe**, and **Kathy Heasler** are in the background.



Friends and co-workers of **David Cain** (center), T & D Department, gathered recently at our Choctaw Service Center to wish him the best of luck on his retirement. Mr. Cain joined our company in 1936.

IN MEMORY

We wish to extend our sympathy to the family and friends of **John A. Triplet**, retired Baton Rouge employee, who passed away on March 26, 1970.

Thrift Plan

Purchases of Gulf States Utilities Co. stock made by the trustee during March, 1970, covering employee deductions and company contributions through February, 1970, were as follows:

3,227 shares of common stock at a total cost of \$74,625.04 or an average cost per share of \$23.125.

80 shares of \$4.40 Preferred stock at a total cost of \$4,864.26 or an average cost per share of \$60.803.

The Trustee deposited \$24,310.58 with the Savings Department of the First Security National Bank of Beaumont.

BEAUMONT DIVISION

Information & Data Services

Katherine C. Marshall, Dept Clerk (Records-Dupl)
Corporate & Finance

Alyce S. Schneider, Dept Clerk - Corp & Finance
Treasury

Norma H. Jordan, Clerk - Cust Acctg

Clark E. Pickard, Storeroom Assistant

Cheryl C. Springer, Clerk - Gen Acctg

James E. Franken, Jr., Meter Reader

System Engineering

Rupert L. Ellis, Commun Serviceman 3/C - Eng Design

Larry L. Green, Engr Helper - Eng Des

Production

Randy D. Draper, Operator's Helper - Neches Sta

Jessie F. Love, Operator's Helper - Neches Sta

Darrell B. Martin, Operator's Helper - Neches Sta

James R. Rose, Mechanic's Helper - Neches Sta

Ellis J. Sherrick, Mechanic's Helper - Neches Sta

Paul Matthews, III, Laborer I - Neches Sta

Distribution

Henry H. Willis, Helper-T&D Dept (Line)

Terry W. Weaver, Helper-T&D Dept (Line)

Lynn A. Falcon, Helper-T&D Dept (Line)

Dennis P. Humphrey, Helper-T&D Dept (Line)

Edmund D. Anderson, Helper-T&D Dept (Line)

Henry B. Hodge, Jr., Commun Serviceman 3rd Class

Calvin G. Smith, Commun Serviceman 3rd Class

David L. McCauley, Commun Serviceman 3rd Class

Marshall F. Sherley, Relayman 3rd Class

Nancy F. Mathews, Dept Clerk - T&D (Engr)

Betty J. Reynolds, Dept Clerk - T&D (Serv)

Sales

Lynwood Walters, Residential Sales Repr

Management

Patrick J. Saide, Engineer - T&D (Eng)

Ronald E. Shuff, Admn Asst - Inf & Data

Ervin W. Berger, Admn Accountant - Acctg Opers

PORT ARTHUR DIVISION

Production

Richard P. Guyote, Operator's Helper - Sabine Station

Joel E. Jeffcote, Mechanic's Helper - Sabine Station

Gene P. Cotton, Chemist - Sys Prod

Distribution

Joseph Veltz, Laborer I - T&D (Line)

Treasury

Larry A. DeBlanc, Laborer I - Divn Treasury

Paul D. Wahl, Meter Reader

WESTERN DIVISION

Distribution

Calvin L. Landry, Helper-T&D Dept (Line)

Treasury

Carolyn J. Ramsey, Local Office Clerk

Sharon L. Dye, Local Office Clerk

Curtis L. Ross, Meter Reader



**Welcome
Aboard!**

BATON ROUGE DIVISION

Production

Raymond C. Christian, Operator's Helper - La Sta

Lynn E. Taylor, Operator's Helper - W/Glen

Harry H. Holcomb, Jr., Mechanic's Helper - La Sta

William A. Champagne, Mechanic's Helper - La Sta

William W. Gregory, Mechanic's Helper - W/Glen

Distribution

John B. Watt, Helper-T&D Dept (S/Sta)

Orville S. Wood, Helper-T&D Dept (Line)

Anthony T. Anders, Helper-T&D Dept (Line)

Donald R. Rushing, Helper-T&D Dept (S/Sta)

Gerald W. Brewer, Helper-T&D Dept (Line)

Michael P. Couvillion, Helper-T&D Dept (Line)

Gene D. Fuselier, Helper-T&D Dept (Line)

Lucien A. Murzyn, Jr., Relayman 3rd Class

James T. Doucet, Garage Mechanic 3rd Class

Iva B. Dietrich, Dept Clerk - T&D (Engr)

Ronald J. Breeland, Helper-T&D Dept (Line)

Phillip C. Thibodeaux, Helper-T&D Dept (Line)

Gas Department

Carl E. Denmark, Helper-Gas Dept

James A. Hebert, Laborer I - Gas Dept

Treasury

Adrien Montegut, III, Meter Reader

George R. Willard, Meter Reader

Debra A. Easterly, Clerk - Cust Acctg (Cr & Col)

Richard J. Nesom, Meter Reader

Sales

Joe W. Curry, Jr., Residential Sales Repr-Jr

Isaac G. Stokes, Residential Sales Repr

Glenda H. Deen, Floor Saleslady-Trainee

Theresa L. Riehl, Home Service Advisor-Jr

LAKE CHARLES DIVISION

Production

William D. Atwell, Operator's Helper - Nelson Sta

James R. Clark, III, Operator's Helper - Nelson Sta

Leroy J. LeBlanc, Mechanic's Helper - Nelson Sta

Distribution

Percy Mallet, Jr., Helper-T&D Dept (S/Sta)

Billy D. Woolverton, Engineer - T&D (Eng)

Treasury

Linda A. Schexnider, Local Office Clerk

Gloria D. Roy, Clerk - Cust Acctg

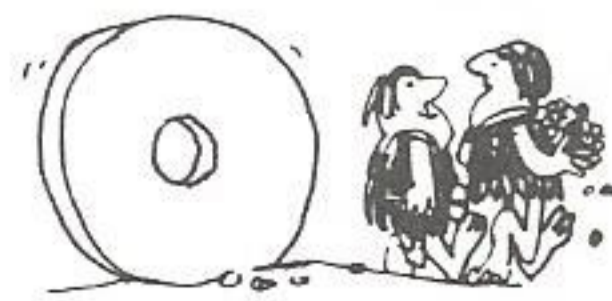
dis GRUNT lings



HEY! WHAT ARE WE GOING TO CALL IT?

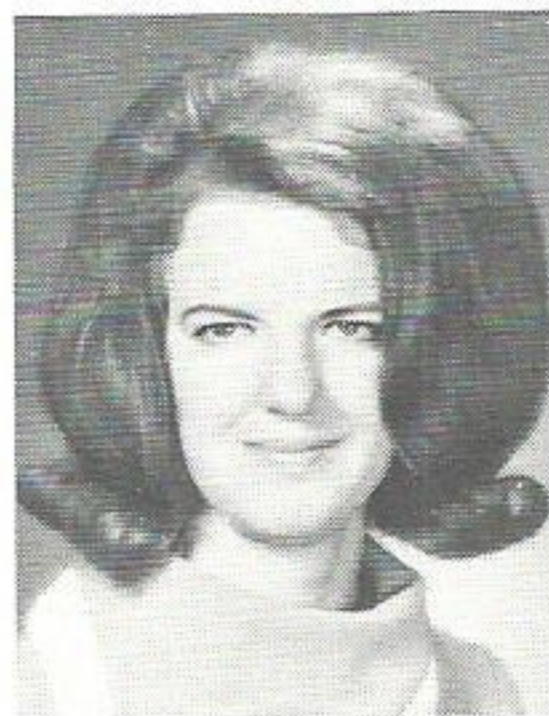


OH, I DON'T KNOW. HOW ABOUT "GRAVEL"?



SANDY A DANDY

The rolling hills of East Texas have captivated a young miss of 23 years into making Huntsville her hometown. She is Sandra Graves who works out of our Navasota Office as a home service advisor. A graduate of Huntsville High School, Miss Graves remained there to obtain her Bachelor of Arts in Teaching from Sam Houston State University. She is qualified to teach in home economics or English but luckily she joined our company in June of 1969. She is a member of Beta Sigma Phi, service sorority; the Pennybackers, a professional home economics club in Huntsville; the American Home Economics Assn. and the Texas Home Economics Association. When she is not traveling around our Western Division, Miss Graves enjoys dancing and sewing and belongs to the 1st Baptist Church in Huntsville. Featured this month are six of her favorite recipes.



CHICKEN TETRAZZINI

½ cup green pepper, diced	1½ tbsp. cornstarch
1 clove garlic	1 cooked boned chicken, cut in chunks
1 can sliced mushrooms	1½ cup Parmesan cheese, grated
3 tbsp. margarine, melted	¼ cup parsley, chopped
2 cups water	18 oz. pkg. uncooked noodles
1 pkg. chicken-noodle soup mix	
1 cup milk	

Cook green pepper, garlic and mushrooms in margarine over low heat until tender; remove from heat. Bring water to a boil; add soup mix. Simmer for five minutes. Blend milk and cornstarch. Stir in soup, stirring constantly; bring to a boil and boil for one minute. Add chicken, 1 cup cheese and vegetable mixture. Heat to melt cheese. Cook noodles according to directions. Combine with sauce; place in casserole. Sprinkle with ½ cup cheese. Bake at 350° F. for 30 minutes. Makes 8 to 10 servings.

BROCCOLI CASSEROLE

2 ten oz. pkgs. frozen chopped broccoli	2 to 4 tbsp. onion, grated
2 eggs, beaten	1 cup sharp cheese, grated
1 cup mayonnaise	salt and pepper to taste
1 10½ oz. can undiluted cream of mushroom soup	½ cup cheese cracker crumbs

Cook broccoli for five minutes; cool and drain. Combine broccoli, eggs, mayonnaise, soup, onion, ¾ cup cheese, salt and pepper. Place in a greased casserole. Sprinkle with cracker crumbs; top with remaining cheese. Bake 30-45 minutes at 350°F. Makes 8 to 10 servings.

JELLIED TOMATO SALAD

1 tbsp. unflavored gelatin	½ tsp. salt
¼ cup cold water	pepper
2½ cups canned tomatoes	1 tbsp. lemon juice
1 tbsp. minced onion	½ cup finely chopped cucumber
½ small bay leaf	
½ tsp. sugar	½ cup finely chopped celery

Soften gelatin in the water. Cook tomatoes, onion, and bay leaf about 10 minutes. Press through sieve and measure 1¾ cups (if not enough, add boiling water). Add hot, sieved tomatoes to gelatin and stir until gelatin is dissolved. Season with sugar, salt, pepper and lemon juice. Chill. When gelatin mixture begins to stiffen, add cucumber and celery. Mix well. Pour into a mold or pan rinsed in cold water. Chill until firm. Serve with salad dressing on lettuce or other salad greens. Six servings.

HAWAIIAN DELIGHT

1 pkg. orange gelatin	1 8¼ oz. can crushed pineapple, undrained
¾ cup hot water	½ cup miniature marshmallows
1 6 oz. can orange concentrate	½ box coconut
1 box dessert topping mix	
1 can mandarin oranges, halved	

Dissolve gelatin in hot water; add orange concentrate. Chill until almost set. Prepare dessert topping mix according to package directions; fold into gelatin mixture. Fold in remaining ingredients. 8 servings.

JALOPENA CORNBREAD

3 cups cornbread mix	½ cup chopped Jalopena peppers
2½ cups milk	1½ cup grated cheese
½ cup salad oil	2 slices crisp bacon, chopped
3 beaten eggs	½ cup chopped pimiento
1 large onion, grated	garlic to suit taste
3 tbsp. sugar	
1 cup cream style corn	

Combine cornbread mix, milk, salad oil and eggs. Mix well, add remaining ingredients. Bake in well greased pan at 400 degrees for 30-40 minutes. Makes six servings.

MILKY WAY CAKE

8 Milky Way bars	2½ cups flour
2 sticks margarine	1 tsp. soda
2 cups sugar	1¼ cup buttermilk
4 eggs	1 cup pecans

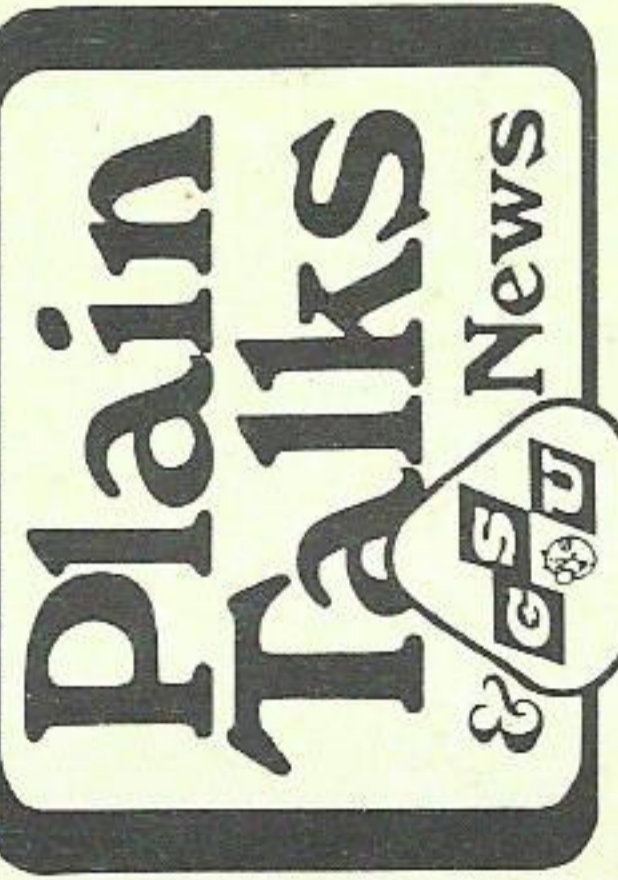
Melt margarine and Milky Ways on warm setting. Add sugar, eggs and remaining ingredients. Bake in three greased and floured 9" layer pans. Bake at 350 degrees for 30 minutes.

MILKY WAY ICING

2½ cups sugar	1 cup marshmallow cream
1 6 oz. can (¾ cup) evaporated milk	1 stick margarine
6 oz. pkg. semi-sweet chocolate chips	½ tsp. vanilla
	1 cup pecans

Combine all ingredients. Cook to a soft ball stage. Add nuts and vanilla. Let cake cool on racks and spread between layers and over cake.

AFTER FIVE DAYS RETURN TO



P. O. BOX 2951
BEAUMONT, TEXAS
77704

RETURN POSTAGE GUARANTEED

BULK RATE
U. S. POSTAGE PAID
Beaumont, Texas
Permit No. 11

Beaumont

drive

