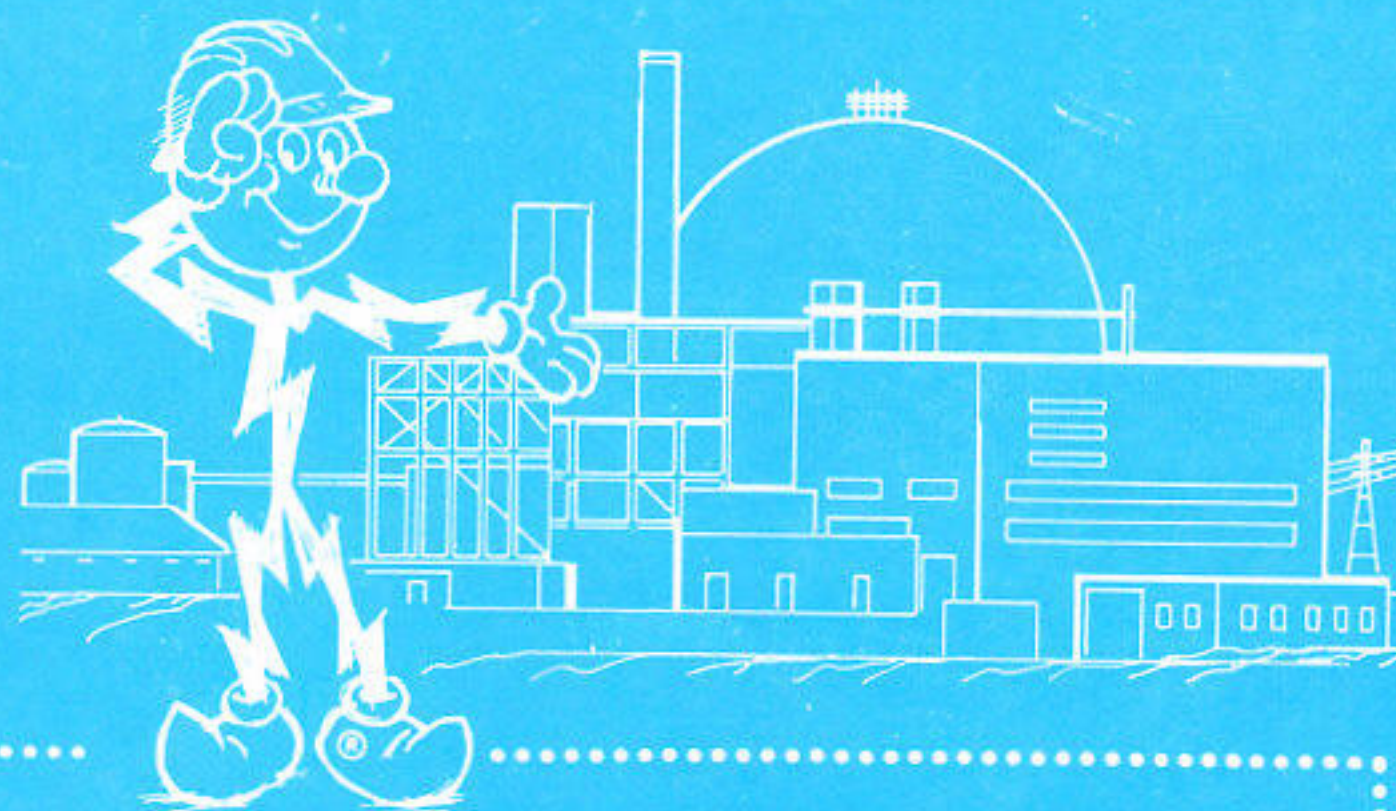




JANUARY-FEBRUARY, 1973



OUR CORPORATE OBJECTIVE

The objective of Gulf States Utilities Company is to be a leader in customer service, operating efficiency, low rates, personnel development, innovation of improved and progressive ideas, load and market development, community citizenship and profitability.

To achieve this objective, management will:

Encourage research and creative thinking in all phases of the Company's business that will lead to higher standards of service, and lower rates to the customer.

Employ, develop, motivate and reward employees needed to provide the talents, knowledge, and experience required for a progressive, growing Company.

Provide sound financial management of the Company's resources to earn a fair return on investment and maintain the respect and confidence of investors.

Increase sales and earnings by:

Aggressive promotion of new and increased use of energy,

Development of marketing policies sensitive to the needs and desires of customers,

Diversification where advantageous, Active promotion of the growth, development and economic progress of the area.

Energy For The Future

The United States is going to need energy from nuclear sources in tremendous amounts within a very few years.

Within a decade, if the demand for power grows as projected, nuclear plants will be called upon to meet around a quarter of our needs.

Oil, gas and coal supplies in the United States are limited and imported power just naturally costs more, regardless of whether it comes from Alaska's North Slope or Siberia. The limit has already been reached in hydroelectric power for all practical purposes. Solar power is beyond us technically now. Therefore, nuclear power is it.

As of now, 29 nuclear plants have been built, 48 more are under construction and 67 are on order. By 1990, it is projected that 500 nuclear plants will be in operation.

We believe these plants offer the only immediate solution to our power needs. The alternatives—limited power for industry, curtailment of home use for air conditioning and appliances, for instance—are not good.

There are drawbacks to nuclear energy, of course. Greater public understanding is needed so that these problems can be put in focus.

First in public mind comes the thought of explosion. With the materials involved, the reaction process used to produce electricity cannot escalate to the point of detonation.

There is the problem of heat pollution. Excess heat must be disposed of in a nuclear plant just as it must in any power plant. Here, fortunately,

the technology exists to operate within reasonable bounds.

Another reservation about nuclear plants concerns radiation. Yes, radiation causes cancer, if there is a high enough dosage concentrated over a long enough period of time. But under normal operation, a nuclear power plant's nearby radiation effect is of no more consequence than that of a color television set.

What if the plant does not operate normally? That is the subject of considerable debate now. The Atomic Energy Commission's regulatory body has recommended new safety regulations, for one thing reducing the temperatures at which reactors operate to lessen the chances of the failure of a cooling system and the possibility of release of radiation into the plant at dangerous levels.

Scientists say nuclear reactor designs are now safe, in the same sense that it is safe to drive a two-ton car over a bridge with a 20-ton load limit.

There is a possibility that Congress will hold safety hearings after it convenes in January. The environmentalists and some concerned scientists are seeking such a forum.

A hearing on nuclear plants could serve a purpose if it were dedicated to bringing out facts and not devoted to groundless propaganda. A realistic balance must be reached on environmental and safety problems so that this tremendous source of power can be fully tapped.

This is a reprint from a recent edition of the Houston Chronicle.





Volume 51

Number 1

January-February, 1973

<i>Reddy Credit Couple</i>	2
<i>A Family Christmas</i>	4
<i>GSU News</i>	7
<i>People on the Move</i>	16
<i>Service Awards</i>	17
<i>Retirements</i>	18
<i>Coffee Cup</i>	19
<i>Photo Album</i>	28
<i>Welcome Aboard</i>	40



Reddy Credit p. 2



Christmas p. 4

Published Monthly By
Public Relations Dept.

GULF STATES UTILITIES CO.
P. O. Box 2951
Beaumont, Texas 77704

James S. Turner, Director, Public Relations
Mike Shurtleff, Associate Editor
Pat McMeel, Contributing Editor, Beaumont
Frank Jones, Contributing Editor, Baton Rouge

Member:



The cover outlines the company's corporate objective; the cornerstone of our philosophy. A vital part of this objective is service, and the building of our nuclear power plants will enable us to provide dependable, clean power for the future years.

Another First For The Company

Reddy Credit Brings True Happiness

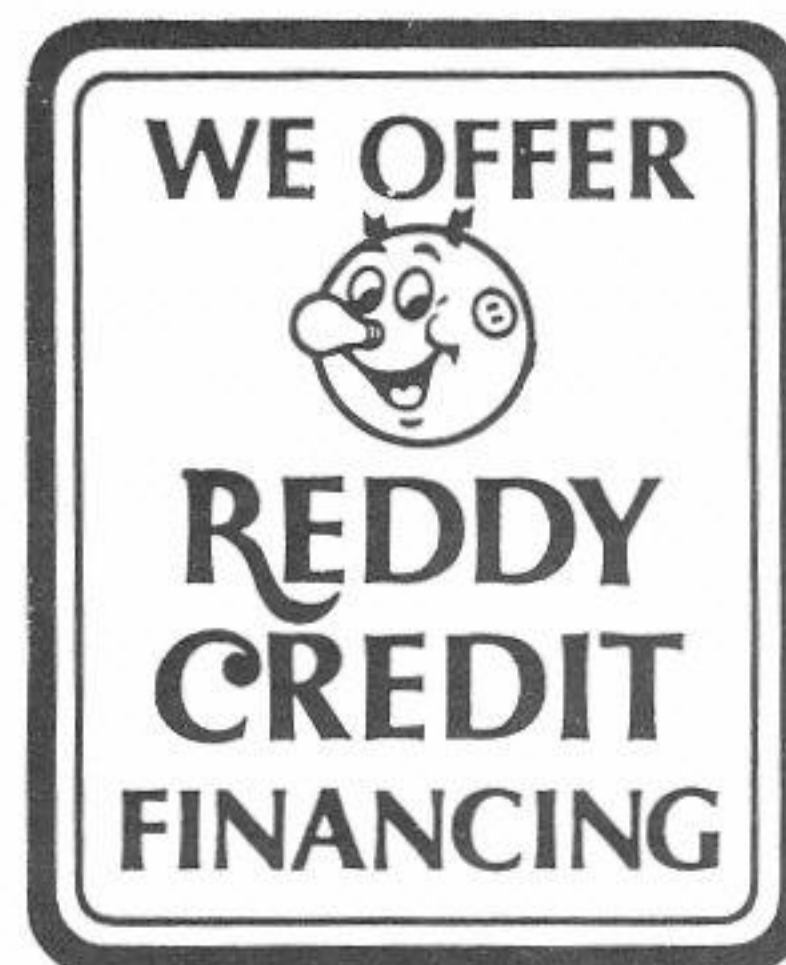
by Frank Jones

Jackie Bourgeois, sales secretary in the Baton Rouge North Boulevard office, received a phone call one day from a man named Tom, a salesman at a local appliance dealership, McCleod's. Tom needed Reddy Credit information for one of his customers, and Jackie gave it to him.

Obviously, Jackie had all the answers to Tom's questions, as everytime he made a Reddy Credit sale, he called and asked for Jackie. Seems he liked her voice or something. Anyway, he kept asking her to go out with him and she kept refusing.

Finally, sometime in June, she agreed and the Reddy Credit Couple met for the first time, face-to-face. That humid night in June began what was later to become a lifetime together. Three months later Tom asked her to marry him and Jackie didn't put up much of a fight this time, as she said "YES!" the very first time he asked.

They were married on October 14 and departed these United States four days later for a week of all-expense-paid fun in Paris, France. Tom had recently won a sales contest for selling the most number of dollars of Admiral air conditioners. Tom had originally planned to take his mother to Europe with him, but due to poor health, she declined the invitation and gave her seat on the plane to Jackie. She accepted, naturally, so they hurriedly planned the wedding, got married and flew off on the honeymoon of a lifetime!



Tom and Jackie Walker have the honor and distinction of being the company's first "Reddy Credit Couple."



Jackie spent nearly a week in "Show and Tell" sessions for the entire Baton Rouge sales force. Commenting on why the traffic in Paris scared her so badly, she noted that their drivers aren't required to have licenses! Jackie's favorite night spot was the world famous LIDO, and their extravaganza topless revue. She noted that her new spouse seemed to appreciate his front-row seat for the lengthy show!

As for Parisian cuisine, Jackie thought it was just great, but she seems to have had a little trouble adjusting to Paris's water, more formally referred to as wine. She also said the French pastry was just beautiful, but tasted awful.

"It was like a country girl come to town," she said about the trip, "and the people over there treated us like rich folks."

So you see Reddy Credit CAN bring true happiness!



For their honeymoon, the Walkers boarded a plane for Paris, France and a week of all-expenses-paid enjoyment.



Tom and Jackie pose in front of the famed Eiffel Tower, just one of the many attractions they visited on their dream honeymoon.

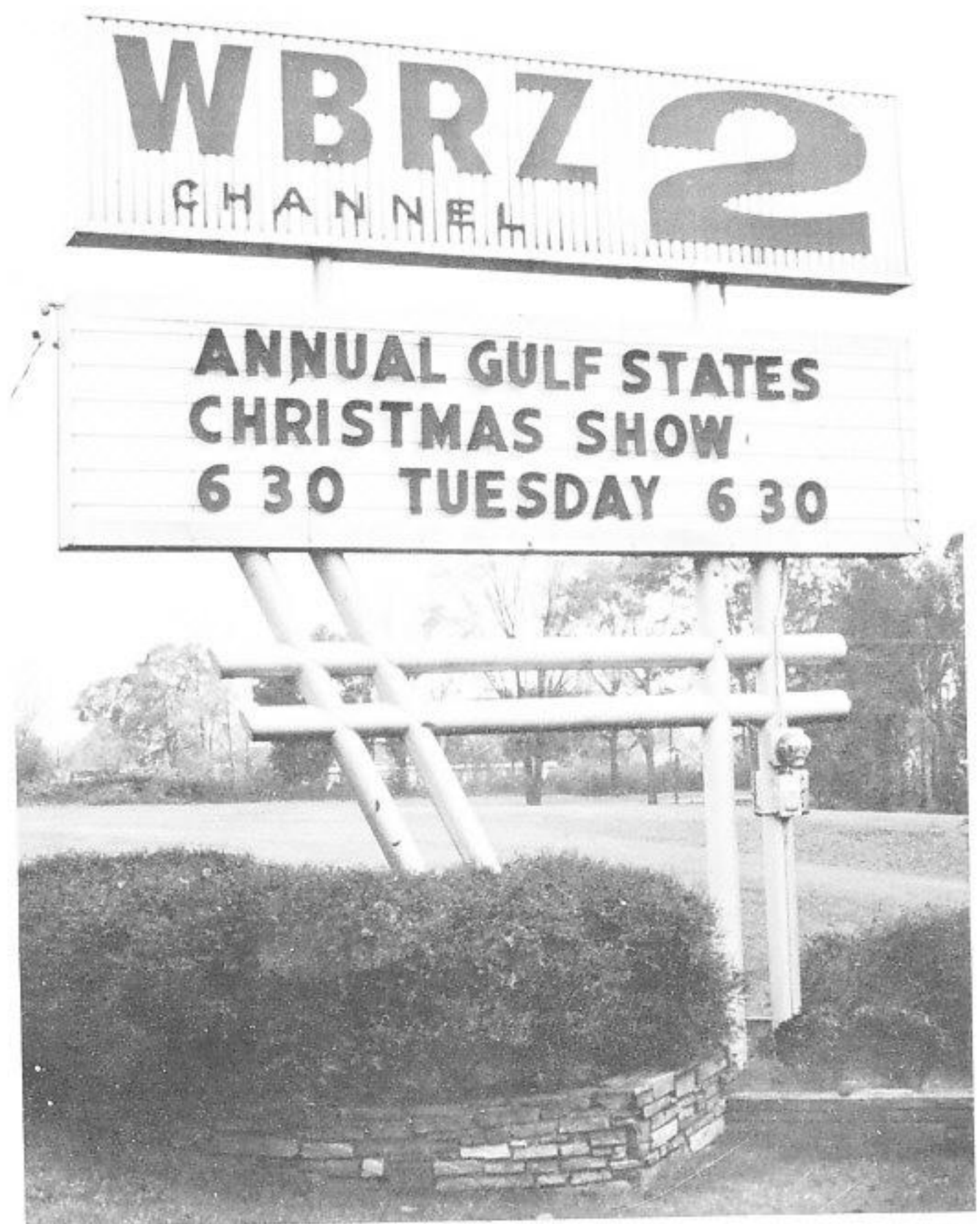
A Family Christmas

Many of us have secretly wished that we could be TV stars. It would be an exciting life, with our many performances being viewed on television screens in the homes of millions of people. Fame and all of the benefits that come with being a star how could all of this be just another job? Well, five Gulf Staters will be more than happy to declare that appearing in front of a camera is hard work, to say the least.

The Company recently produced its annual Christmas TV special, aired in the Golden Triangle, Lake Charles and Baton Rouge. This year's special, entitled "A Family Christmas," centered around new ideas for the holiday season that would involve participation by the whole family. Four home service advisors and a vice president shared time in front of the camera, working very hard to produce what resulted in an excellent performance by each. Lafayette's Margaret Andries presented the gifts and indoor decorations segment, Janice Wynn of Baton Rouge provided new ideas for food preparation and entertainment, and Sue Kendall of Beaumont and Kathleen Peters of Port Arthur presented the table decorations and small appliance portion of the special. Vice President Bill Heaner gave a fine performance as the host, appearing on camera to give the introduction and closing, as well as providing the voice-over introduction for each segment. The show also contained a slide presentation with background music, showing original ways to light the home. Frank Jones, Public Relations Representative - Baton Rouge, and Mike Shurtleff, Public Relations Representative-Beaumont, assisted in the show's writing, direction and continuity.

The special was taped at WBRZ-TV, Channel 2 in Baton Rouge, with production work being held on the nights of November 16-17. Everyone rehearsed their part beforehand, and came to the studio well-prepared. Home Service Director Mildred Tribble coordinated the show, and with the help of Harriet Babin, Baton Rouge home service supervisor, assisted the ladies with their individual presentations.

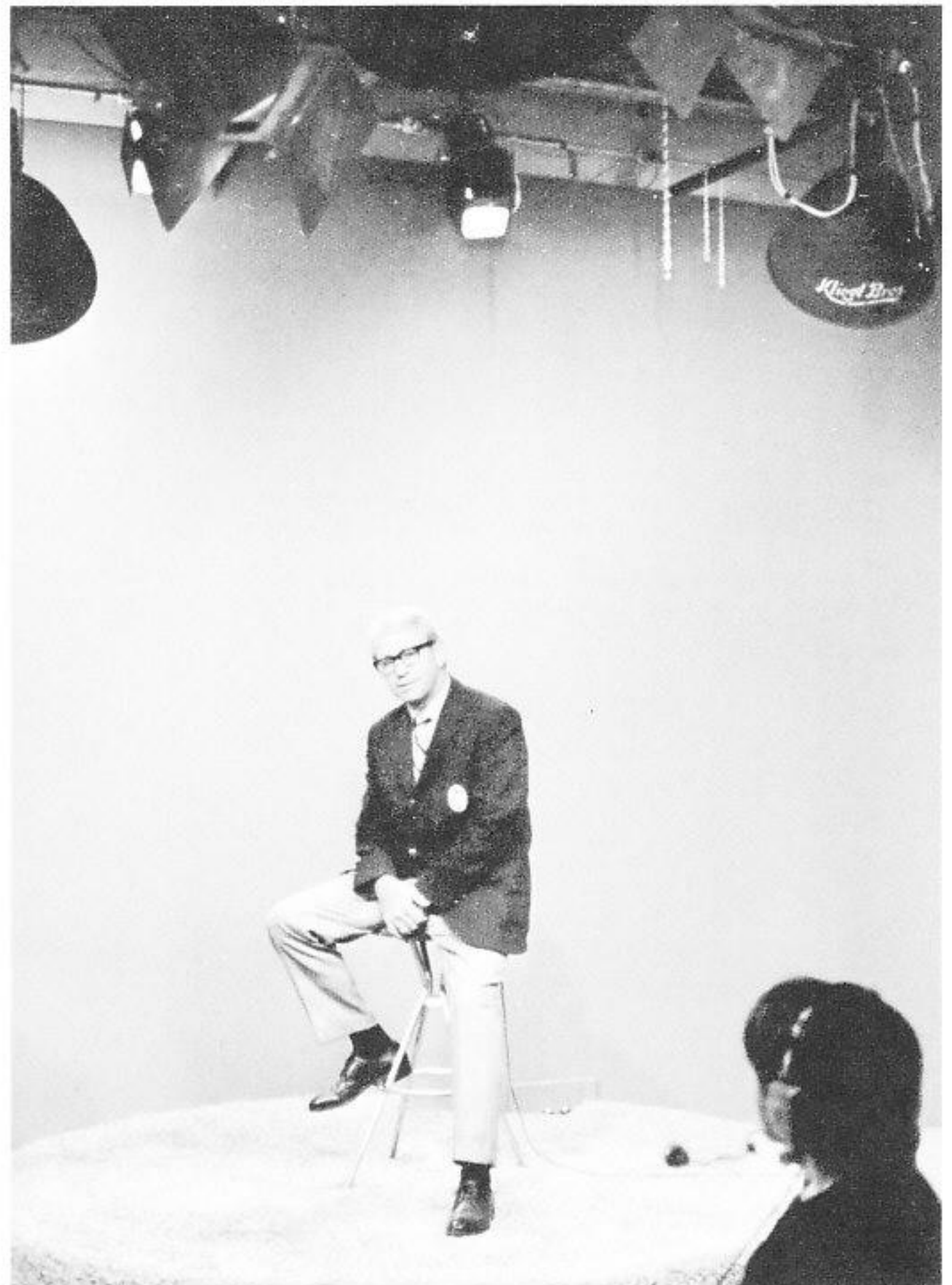
Five Gulf Staters found that a major TV production involves a lot of time and hard work.



The Christmas special was taped at WBRZ — Channel 2 in Baton Rouge, and the marquee in front of the station announced the time and date to the public.

The first night consisted of taping the introduction, two segments, closing and all voice-overs. This is when the hard work really began, not to mention the work and time involved in preparations beforehand. First, a segment would be rehearsed in front of the camera to allow Raymond Drago, the director, to decide on the camera shots; then that particular segment would be taped. If there was agreement that what had been taped was satisfactory, then . . . on to the next segment. Otherwise, changes and suggestions were made, then taping started over again. No matter how well any program is rehearsed, changes are invariably initiated. Often-seen minor problems included the changing of camera angles, lighting, scripts and even the arrangement of props to be used.

Timing was of utmost importance in the production, since the show had to conform exactly to the time period that was purchased from the various stations. Everyone performing in front of the camera was confined to a definite time limit. If,



Vice President Bill Heaner served as host for the special, providing the voice-overs that introduced each segment.



Kathleen Peters, home service advisor from Port Arthur, showed new ways to decorate table tops.

during rehearsal, it was found that a script was too long or too short, adjustments had to be made. Thanks to careful planning, there were plenty of ideas and accompanying script available, so there was no problem in making good use of the allotted time.

The second night of taping was a repeat of the first. Both nights' sessions ended at 1 a.m., with everyone a little red-eyed but satisfied. Final editing of the program was completed the following Sunday, and copies of the special were sent to the Lake Charles and Port Arthur television stations. Many comments were voiced after the show was seen by the public, and all reports have been highly complimentary. This made all the planning and hard work that was involved worthwhile.

Congratulations to everyone who helped make "A Family Christmas" a success. Even though it may have discouraged some of us from ever wanting to be a T.V. star, there are those who are already saying . . . "only 343 days left until next year's special!"



Janice Wynn, Baton Rouge home service advisor, presented new holiday ideas for food preparation and entertainment.



Sue Kendall, Beaumont home service advisor, entertained the viewers with demonstrations of the new small appliances that are now available to the public.



From Lafayette came Home Service Advisor Margaret Andries with hints for Christmas gifts and indoor decorations for the holidays.



Animated dolls were used for continuity, as well as helping carry the "Family Christmas" theme throughout the program.



Baton Rouge Home Service Supervisor Harriet Babin helping out, as seen through the eye of the camera.



Mildred Tribble (right), Beaumont home service director, coordinated the program, and found time to "dig in" and help Janice Wynn prepare the food for her portion of the show.

GSU NEWS

Retain Payroll Stubs

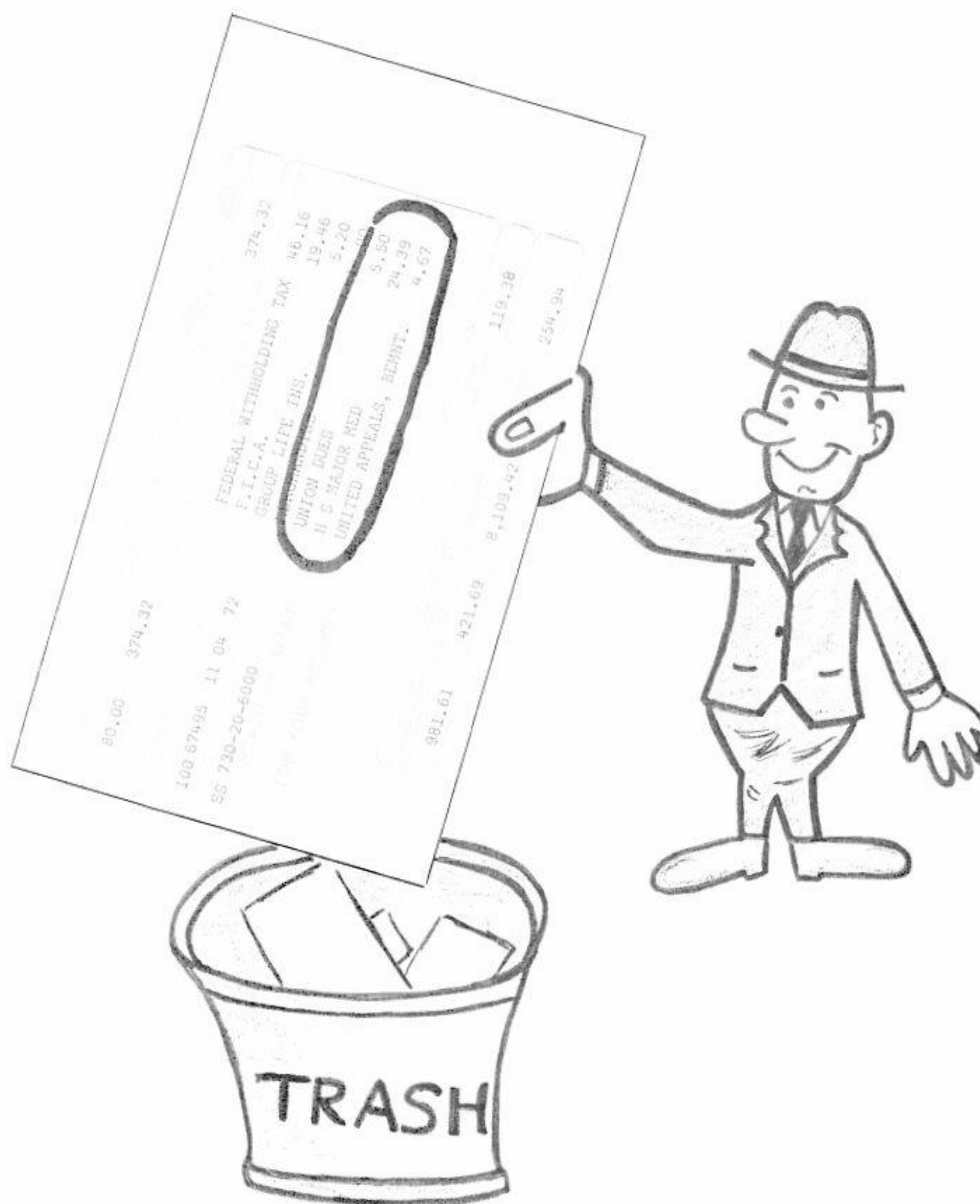
Tax Time Is Here Again

The new year has just begun, and what follows as surely as night after day? That's right . . . income tax time, and whether you look forward with anticipation to a refund, or with agony to what you have yet to ante up, the filling out and filing of the income tax return is a tedious task.

When putting together a puzzle it helps to have all the pieces, and among the most important pieces in this case are the stubs from your payroll check that show your contributions to united fund drives and deductions for group hospitalization insurance and union dues. Do you have these stubs handy when you start to fill out your returns, or are you one of the growing number of Gulf Staters who attempt to transfer this burden of personal record-keeping to the Payroll Department?

Ken Jumel and Lamelle Triplett, director and supervisor, respectively, of Payroll and Benefits Administration, report that their department is getting more and more calls around the first of each year from employees who need information on deductions. This information, they remind, is reported faithfully each payday on the check stubs which our Company for years has been urging employees to detach and save. To complicate matters, these requests come at a time of the year when the department is already weighed down with tax reports to federal and state governmental authorities.

Just as any other receipts kept for income tax purposes, these payroll stubs should be retained for at least three years to cover a possible audit of your return by the Bureau of Internal Revenue. In some instances it has been necessary for payroll personnel to go to the vault to dig out old records in order to assist Gulf Staters whose past returns were under scrutiny.



"If the trend continues and the burden to Payroll becomes too heavy," Mr. Jumel said, "it is conceivable that a policy might be adopted prohibiting the giving of further information to employees on payroll deductions except in cases of extreme emergency. It would be unfortunate if we were

forced into this position. Please save those pay check stubs."

This reminder is, of course, too late for last year, the Payroll director acknowledged, but it is just in time to get every Gulf Stater off on the right foot for the coming year.



McAlpine New C of C President

Randy McAlpine, manager of the Port Arthur Division, has been elected president of the Greater Port Arthur Chamber of Commerce for 1973.

The new president and board members were given a formal introduction at a recent noon meeting of the Chamber.

Mr. McAlpine came to Port Arthur as a division manager in 1968 after serving as sales manager of the Beaumont Division. While in Port Arthur, he has been active in the United Services Campaign and serves on its Board of Trustees.

A member of the board of directors of the Port Arthur Club and the Port Arthur Country Club, Mr. McAlpine is also associated with the East Texas Chamber of Commerce, Port Arthur Rotary Club, Gulf Coast Intracoastal Canal Association and Texas Manufacturers Association.

Mr. McAlpine will serve a three-year term, beginning January 1, 1973.

Home Ec Teachers Meet

One hundred and seventy-five home economics teachers in Area IX of the Texas Education Agency heard Charles DeCuir, Sales Supervisor in the Western Division, describe electricity as the "Solution to Pollution" at a dinner hosted by our company and Texas Power and Light Company at the Lowman Student Center, Sam Houston State University in Huntsville on November 10.

Teachers from the Beaumont, Port Arthur and Western Divisions attended the annual two day in-service education conference. Miss Clatie Hurt is consultant for Area IX.

Decorations for the occasion were trees, which signified the growth of the electric industry, tied with Gold Medallion emblems to depict the newly discovered uses of electric service in the home.

Home service advisors Emily Fleming and Debbie Zemanek from the Western Division; JoAnn Smith, Home Service Supervisor, Beaumont Division and Mildred Tribble, Director of Home Services represented the company at the meeting and served as hostesses for the dinner.



Debbie Zemanek and Emily Fleming-Home Service Advisors in the Western Division; Mildred Tribble, Director of Home Services and JoAnn Smith, Home Service Supervisor for the Beaumont Division greeted guests near a full-sized Gold Medallion tree at an Area IX Home Economics Teachers meeting in Huntsville.

HOLIDAYS - 1973

The Company will recognize the 1973 holidays as listed below:

NEW YEAR'S DAY	MONDAY, JANUARY 1, 1973
WASHINGTON'S BIRTHDAY	MONDAY, FEBRUARY 19, 1973
GOOD FRIDAY	FRIDAY, APRIL 20, 1973
MEMORIAL DAY	MONDAY, MAY 28, 1973
INDEPENDENCE DAY	WEDNESDAY, JULY 4, 1973
LABOR DAY	MONDAY, SEPTEMBER 3, 1973
THANKSGIVING DAY	THURSDAY, NOVEMBER 22, 1973
CHRISTMAS DAY	TUESDAY, DECEMBER 25, 1973

President Smith Announces

Texas Nuclear Plant

Current plans of the company call for the construction of a nuclear generating station in its Texas service area by the end of the year 1980. The announcement was made by Floyd Smith, president and principal executive officer.

The station, which is scheduled to be GSU's first Texas nuclear station, is expected to be located in Newton County, about seven miles southwest of Toledo Bend Lake, and about 30 miles northeast of Jasper, near Mayflower community. The company has previously announced another nuclear plant to be constructed near St. Francisville, Louisiana, on the Mississippi River for operation in late 1979.

President Smith said that nearly three years of "intensive and exhaustive" site studies have been conducted for the company by various consultants. In excess of ten sites in East Texas and Louisiana have been analyzed to determine that the stringent requirements of the Atomic Energy Commission and other federal and state agencies are met.

The nuclear power unit will have a capability in excess of 900,000 kilowatts, and the company will have an option to purchase a second similar unit at the same rating. The plant will be located on a site consisting of from 1,500 to 2,000 acres.

Further extensive studies will be carried out by ecological firms to insure that construction and operation of the plant will harmonize as completely as possible with the environment of the area. Studies of this type have been in progress at the Louisiana site since 1969.

Thrift Plan

Purchases of Gulf States Utilities Company stock made by the Trustee during November, 1972 covering employee deductions and Company contributions through October, 1972 were as follows:

3,472 shares of common stock at a total cost of \$77,131.79 or an average cost per share of \$22.215.

88 shares of \$4.40 preferred stock at a total cost of \$5,280.00 or an average cost per share of \$60.00.

The Trustee deposited \$45,522.35 with the Savings Department of the First Security National Bank of Beaumont.

Deaths



James A. Tucker

James A. Tucker, retired janitor in the Accounting Department in Lake Charles, died November 22, 1972.

Mr. Tucker started with the company in 1945 as a laborer in the Lake Charles Water Department, and was transferred to the Accounting Department in 1946.

A native of Algiers, Louisiana, he attended Algiers public schools. Prior to coming to work at GSU, he was employed as a truck driver and laborer by various Houston and Lake Charles firms.

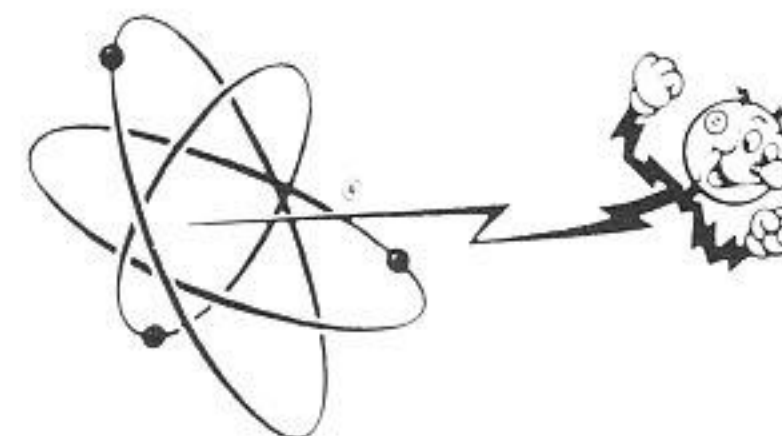


Thomas Gage

Thomas Gage, retired laborer in the Beaumont T&D Department, died December 22, 1972.

Mr. Gage was employed by the company March 7, 1941. He spent all of his time with GSU in Beaumont as a laborer. He retired in June, 1953 after nearly 12 years of service.

Mr. Gage attended school in Abbeville, Louisiana.



DID YOU KNOW?

... it has been calculated that the per-capita use of electricity in the year 2000 could go as high as 27,000 kilowatt hours a year, compared with about 6,000 today. Nuclear power will certainly be needed to provide this projected increase for the future.

A Bit Of Nostalgia

by Frank Jones

The truck shown in the photo, purchased for our Baton Rouge Division in 1945, had the honor of being the first mechanical hole digger in that division.

The unit, when purchased, was capable of digging only holes and the boom holding the drill had to be raised and lowered by hand.

Jim Coltharp, operating superintendent at the time, now retired, designed the pipe-laced boom and installed and modified it so the boom could be raised by a hydraulic lift and so that the drill would also have the capability of setting up to a 45-foot pole.

E. J. Alonzo, utility truckdriver, now retired, is seen boring holes in a pole with the first electric drill in the Baton Rouge Division. The drill was made and designed by Alonzo and Coltharp from a six-volt truck starter and was battery powered. This new invention was a great improvement over the hand drill.

Phil Levert, now a utility foreman in the Substation Department, Baton Rouge, is shown in the other photograph digging a hole with the newly acquired manual boom hole digger.

A bit of nostalgia jogs the memories of the "good ol' days" and can prompt us all to appreciate how progress and technology have made our work day easier and shorter.



E. J. Alonzo, a utility truckdriver for the company in 1945, is using the first electric drill owned by the Baton Rouge Division. The drill was made from a 6-volt truck starter and was battery powered.



Phil LeVert, now a utility foreman in the Substation Department, Baton Rouge, digs a hole with the division's first mechanical hole digger. This was purchased in 1945.



Clark Receives Centurion Award

Tom Clark, Port Arthur residential sales supervisor, was awarded the 1971-72 Centurion Award, presented annually by the Port Arthur chapter of the Sertoma Club.

Mr. Clark is vice president of the Port Arthur Sertoma Club, which stands for Service To Mankind.

The inscription on the award reads "For Outstanding Service To His Club And Community During The Sertoma Year."

A long list of qualifications were met before Mr. Clark received his award. He devoted over 75 hours during the year to mankind activities, his average annual attendance stayed over the 75 per cent mark, and he attended at least two inter-club visitations during the year. He also met the requirements of sponsoring at least one new member in the club and attended a conference or convention during the Sertoma Year.

The Sertoma Club is the second oldest service organization in the world, and is a strong influence in the serving of mankind, thanks to men like Tom Clark.

Social Security Rates Increase

With the passage of HR 1 by the Congress post-'72 social security tax rates will now be even higher than the increase announced earlier in the year when social security benefits were increased by 20%. Here is how the present '72 social security taxes compare with the increased taxes beginning this year.

Employees and employers will each pay as follows:

'72 - 5.2% on up to \$9,000 of wages, maximum \$468.00
 '73 - 5.85% on up to \$10,800 of wages, maximum \$631.80
 '74 - 5.85% on up to \$12,000 of wages, maximum \$702.00

Self-employed will pay as follows:

'72 - 7.5% on up to \$9,000 of income, maximum \$675
 '73 - 8.0% on up to \$10,800 of income, maximum \$864
 '74 - 8.0% on up to \$12,000 of income, maximum \$960

Here is a comparison of the amount of social security tax that an employee and employer will pay in 1973 and 1974 providing no new increases are passed in the new congress.

Yearly Wage	1972	1973	1974	Yearly Wage	1972	1973	1974
\$12,000	\$468	\$631.80	\$702.00	8,000	416	468.00	468.00
11,000	468	631.80	643.50	7,000	364	409.50	409.50
10,800	468	585.00	585.00	6,000	312	351.00	315.00
10,000	468	585.00	585.00	5,000	260	292.50	292.50
9,000	468	526.50	526.50	4,000	208	234.00	234.00

Austin's Gas Curtailed

A newspaper article in the December 8 Houston Post stated that Coastal State Gas Producing Company notified Austin, Tex. city officials of a 100 per cent curtailment of gas supplies to the city's electrical power generators. There was no indication of how long the cutback would last.

The city-owned power plants were forced to switch to fuel oil for steam production for their generators, with Coastal States footing the bill.

The cutback was blamed on the increased demand for gas in North Texas, due to severe cold weather. Residential gas customers in Austin were not affected by the shortage.

Austin's University of Texas was also affected, suffering a 75 per cent curtailment. Their fuel oil supply was so low, however, that normal electrical output could only be maintained for a few days.

The curtailment in Austin was the fourth in recent weeks.



Port Arthur received a special gift from Santa this year—the company award for the 10,000 kilowatt hour average mark in residential use of electricity. This is a milestone that everyone will remember with pride. Sharing in the special moment (left to right) are Port Arthur's Jim Stelly-sales superintendent, Faith Gallio-floor saleslady, Tom Clark-residential sales supervisor, Randy McAlpine-division manager and Carol Simmons-sales stenographer.

Klover Tells River Bend Story

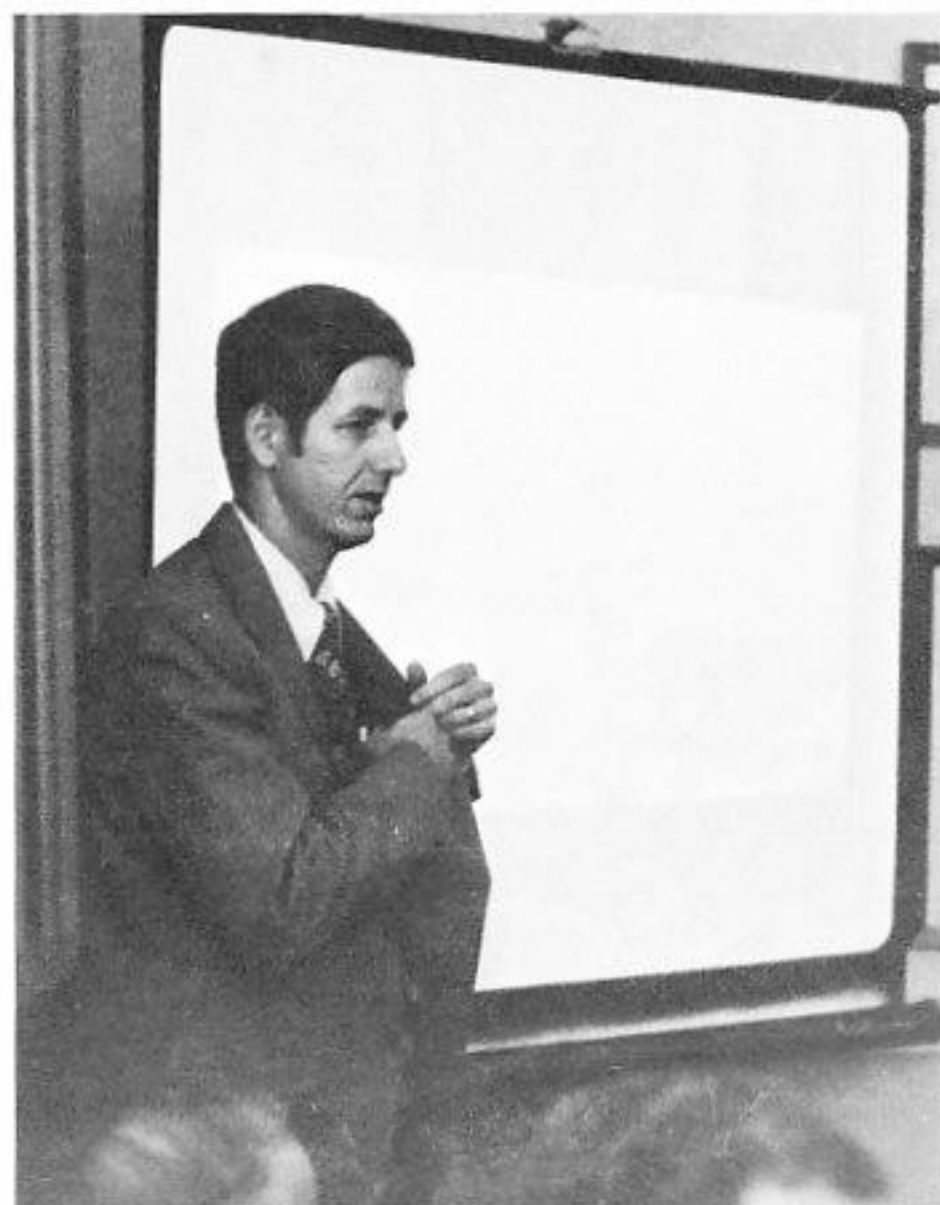
by Frank Jones

Bill Klover, nuclear research assistant in the Baton Rouge North Boulevard office, presented a very important nuclear program to the Baton Rouge Chamber of Commerce Economic Committee at the City Club here recently.

The program was especially useful to GSU in that among those attending for the Economic Committee were influential bankers, realtors, investors, builders, developers, and representatives of local, state and area businesses.

Klover's talk centered around the plant currently under consideration for the St. Francisville, La. area and how it might affect wildlife habitation in the area, local residents, and whether or not its pollutant by-products might harm the community.

The men attending the closed meeting, obviously important people to GSU in the proposed construction of the River Bend plant, were concerned primarily with the questions, "Why do you need so much land?" and "How will the plant be manned, with local personnel, current GSU employees, or will GSU bring in personnel from other cities?" Klover answered all of these questions to their satisfaction and, as the meeting drew to a close, Klover received many favorable remarks on not only his presentation but also the new nuclear power plant proposal. All seemed to be delighted that the plant is being considered and all felt, after hearing Klover's presentation, that the plant would definitely benefit the Baton Rouge metropolitan area.



Bill Klover, nuclear research assistant in Baton Rouge, presented an important nuclear program to members of the Baton Rouge Chamber of Commerce Economic Committee.

In his presentation, Klover discussed the company's nuclear power plant, River Bend, to be constructed near St. Francisville, La.



U. S. Facing Energy Crisis

The United States is facing an energy crisis which is likely to remain critical over the next 10 to 12 years. Needed: a large-scale national effort which will balance U. S. energy needs with national security, the environment, international trade and other priorities.

This conclusion is drawn from the views of over 40 energy authorities — scientists, business leaders and Federal officials who met last year under Conference Board auspices. A compendium developed as a result of that meeting was released today by the Board.

The Board's report titled "Energy and Public Policy — 1972," contains charts summarizing the U.S. energy supply and demand outlook as well as a comprehensive collection of reference documents pertaining to energy policy issues.

The Oil and Gas Quandary

The report notes that the U.S., which currently has no spare oil production capacity, is becoming increasingly dependent on foreign oil. The U.S. is now importing 3.4 million barrels of oil a day, about 25% of current needs. By 1985, imported oil could top 12 million barrels a day, or 60% of total U.S. requirements at that date.

Most of this supply is flowing from a small number of countries in the Middle East which possess up to 80% of the Free World's discovered oil. These countries are accumulating a significant treasury. Between 1971 and 1975, their total oil revenues could reach \$86 billion, equal to the combined monetary systems of the U.S., Canada, Japan and the Common Market. Estimates indicate the Middle East could be collecting dollars at a rate of \$30 billion a year by 1980.

The U.S. also is facing a shortage of natural gas, the leading clean fossil fuel. Says the report: "The year 1971 was the last year when we could claim to have surplus crude oil production capacity and we are stymied in exploring the U.S. Continental Shelf which offers the best possibility for remedying our situation. Although coal is by far our most abundant native fuel, environmental considerations are shifting our electric utilities away from coal to other fuels (in the short run, predominantly imported-low-sulphur residual fuel oil). They are forced out of the use of natural gas by shortages of this premium clean fuel."

Energy — Present and Future

The following outlook for present and future energy requirements emerges from the views of participants in the Conference Board report:

Fossil fuels (oil, gas, coal) will continue to be the country's largest source of energy through this century. Development of oil and gas reserves along the U.S. Continental Shelf and the Alaskan North Slope appear to provide the country's most promising potential for the near term future.

Nuclear energy by fission, which now contributes less than 1% to our energy supplies, will account for about 11% of the total by 1985. Its expansion beyond that stage depends on the speed with which the fast-breeder fission reactor can be developed.

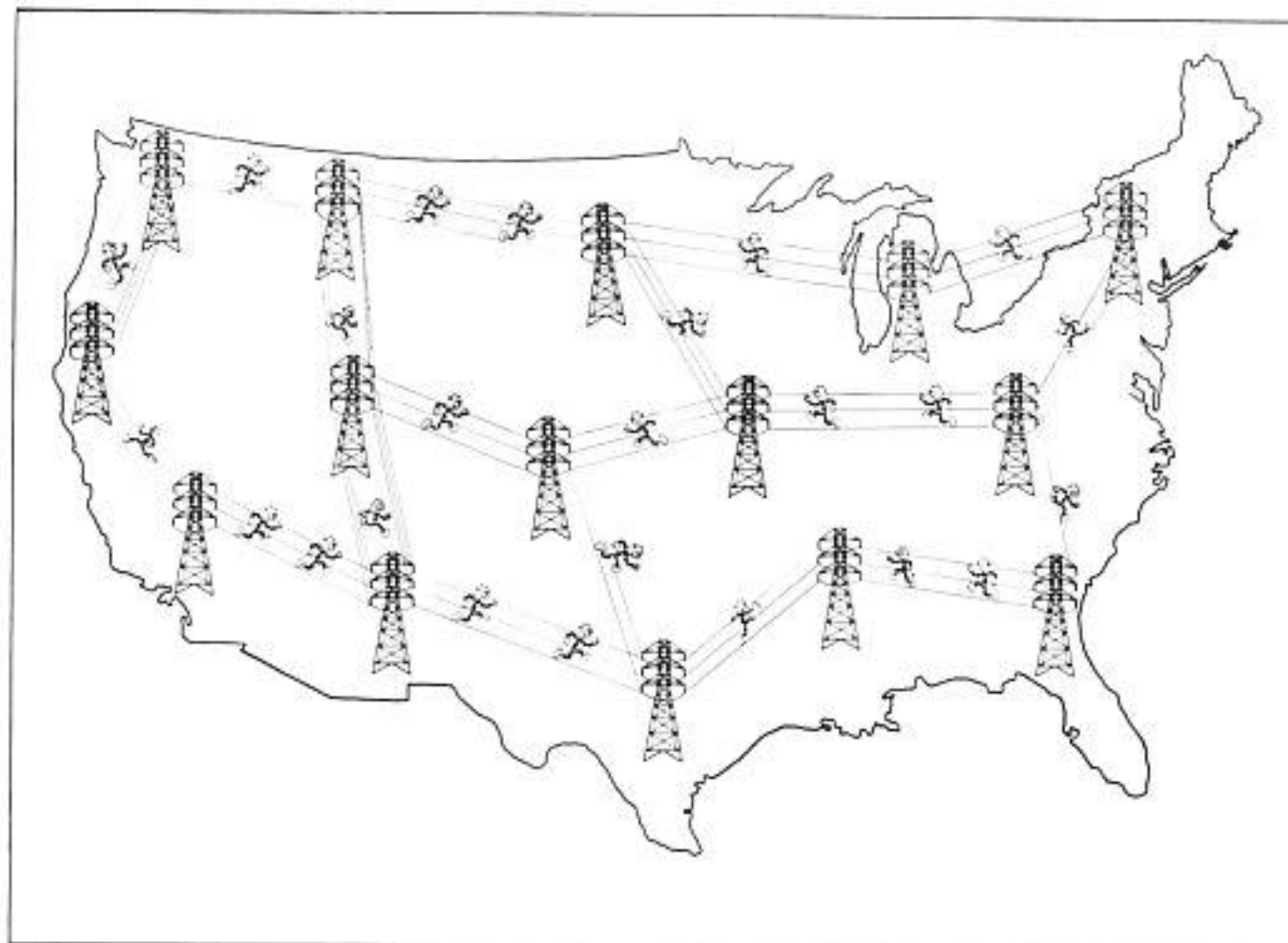
Means will be found to retrieve at least part of the oil and gas now locked into so-called "tight" formations in existing fields (areas difficult and very expensive to reach with current technology).

Coal will be converted to gas to meet clean-air standards and techniques will be found to liquefy coal. Both of these developments will capitalize on U.S. coal reserves of which there are enough to last for six to seven centuries at current usage levels.

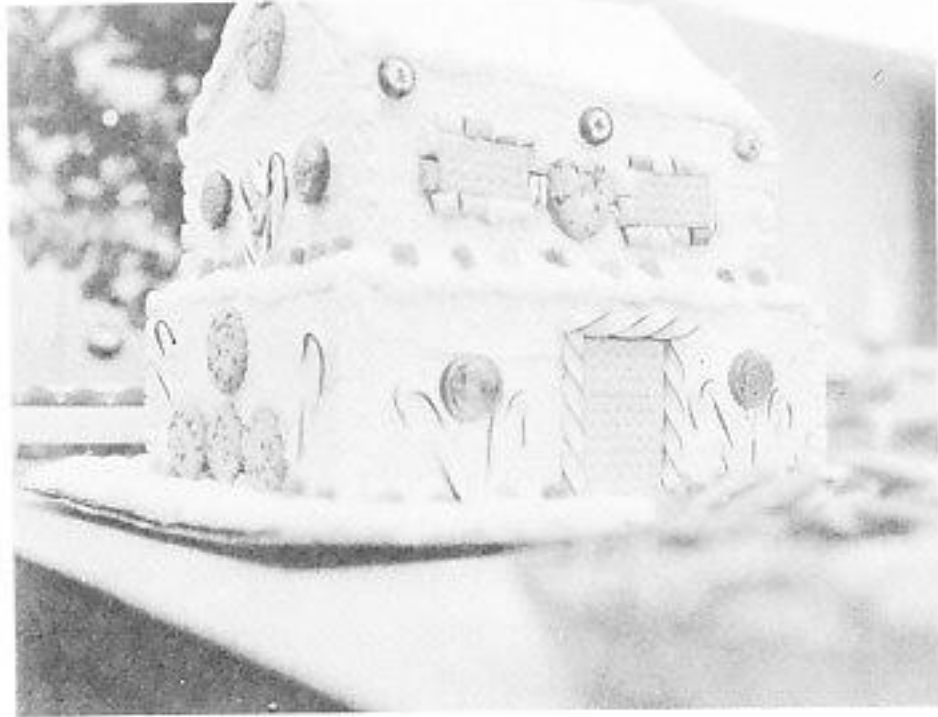
Atomic fusion is expected to become a viable energy source some time toward the end of the century. At about the same time, the much-discussed "hydrogen economy" may begin to emerge, using sea water as an energy source.

The sun's heat will be brought into feasible use as an energy source some time after 2,000 A.D. At about that same time, we may also see some practicable applications of energy generated by the movement of the ocean tides.

All of these projections assume the creation of a national public policy on energy and expenditure of massive amounts of technological, economic and institutional resources. Participants in the study emphasize that it may well require the creation of entirely new institutions, both public and private.



A



Special



Example: Three people worked diligently to make a centerpiece that would entice on-lookers to the table of plenty, and it worked wonders! The candy house you see pictured was built by Bill Reynolds and decorated by Carolyn Winstead and Debby Landry. It proved to be the second most popular item in the building that day!

In the other two photos, Baton Rouge Public Relations Representative Frank Jones is shown improving internal public relations and several of the MOST popular items of the day are shown making tracks to the Christmas goodies!

"Yes, Virginia, there is a Santa Claus!"

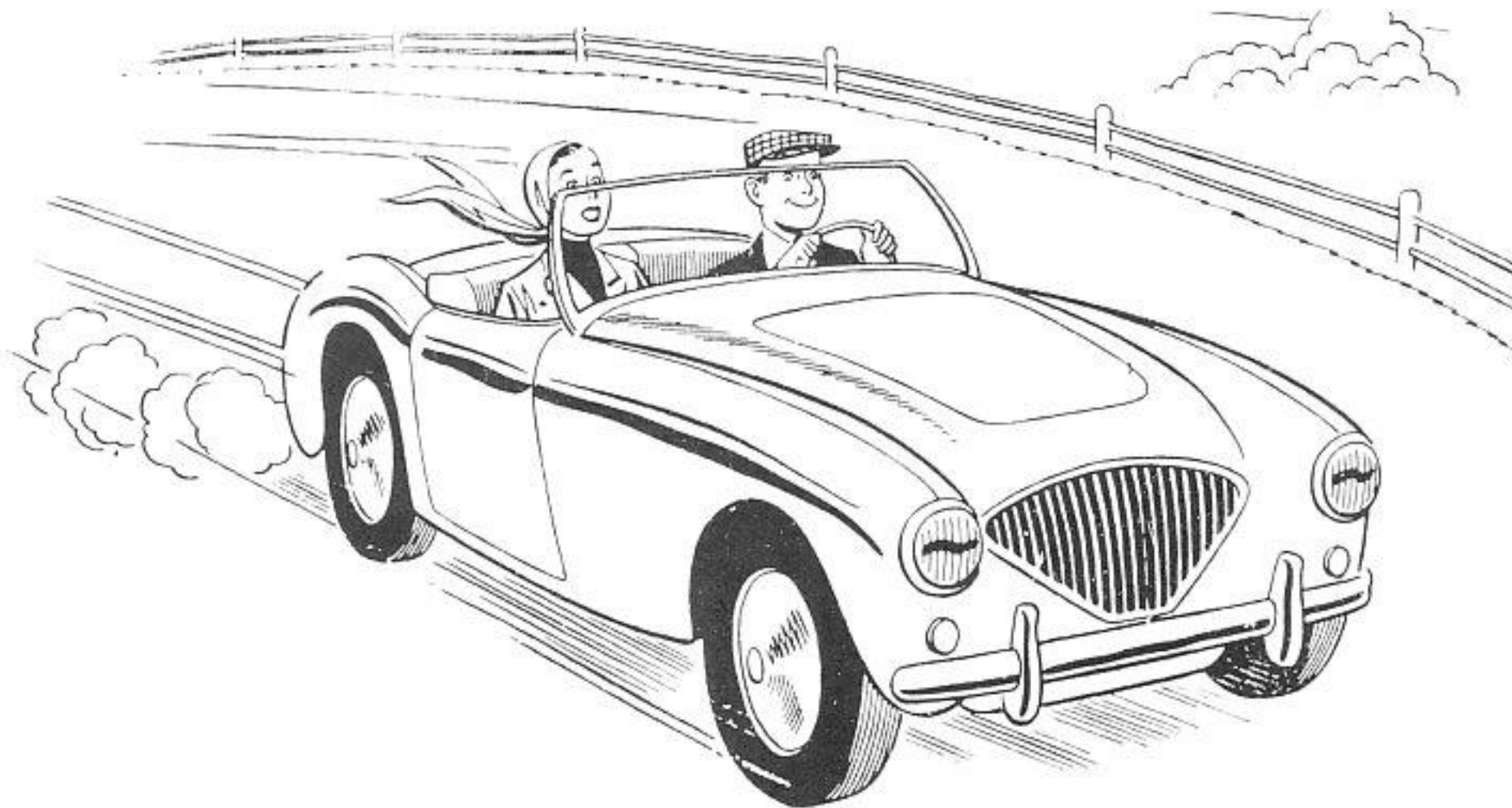
by Frank Jones

Christmas is a very special time of the year for all of us, and this most recently past Holiday Season was no exception. In the Baton Rouge Division, it was especially nice. On Friday, the last working day prior to Christmas, all the ladies in the North Boulevard offices made a special point to dress just a little prettier than usual, which in a lot of cases was a difficult task. Gifts were exchanged among old friends, decorations were abundant on every floor, and snacks to delight even the most demanding connoisseur were available on the first floor to all employees. A lot of time and effort was given by these girls to help make EVERYONE'S Christmas Season just a little brighter.

Christmas



For Your Safety



YOU'RE on the run back to Hanover late Saturday night. What's going to happen to you if your car, traveling 55 miles an hour, strikes a solid, immovable tree?

Cornell's automotive research center has reconstructed such an incident, by experiment, in slow motion and here's the way it goes:

1/Tenth of a Second

Your front bumper and grillwork collapse and slivers of steel penetrate the tree to one and a half inches and more.

2/Tenths of a Second

The hood crumples as it rises and smashes into the windshield. The spinning rear wheels leave the ground, the grill disintegrates and fenders contact the tree forcing the rear to splay out over the front doors. Your body continues to move forward at its original speed as the structural members of the car act as a brake on forward momentum. The force acting on your body is 20 times that of gravity. Your body now weighs 3,200 pounds. Your legs straighten out and snap at the knee joint.

3/Tenths of a Second

Your body is now off the seat, torso upright, knees against the dash. The frame of the steering wheel begins to bend. Your head is near the sun visor; your chest is above the steering column.

4/Tenths of a Second

The first 24 inches of the car's body is completely demolished but the rear end is still traveling at 35 miles an hour with your body going at 55. The motorblock crunches into the tree and the rear of the car rises high enough to scrape bark off the low-hanging branches.

5/Tenths of a Second

Your fear-frozen hands bend the steering column up almost vertically. The force of gravity impales you on the wheel shaft. Steel punctures your legs and intercostal arteries. Blood spurts into your lungs.

6/Tenths of a Second

The impact has ripped your feet from your shoes. The brake pedal shears off at the floorboard. The chassis bends in the middle shearing body bolts. Your head smashes into

the windshield. The rear of the car falls downward and spinning wheels dig into the ground.

7/Tenths of a Second

The entire body of the car is forced out of shape. Hinges tear, doors spring open, and the seat rams forward pinning you against the steering shaft. Blood leaps from your mouth. Shock has frozen your heart.



YOU ARE NOW DEAD!



People On The Move



Chester O. Draper

Chester O. Draper, former master test technician for Gulf States Utilities Company at the Lewis Creek Station near Conroe, has been transferred to Beaumont and promoted to test maintenance foreman at Neches Power Station.

Draper originally worked at Neches Station when first employed in 1962 as a mechanic's helper. In 1970 he was promoted to master test technician and transferred to Lewis Creek.

He is a native of Vidor, graduated from Vidor High School and attended Port Arthur Business College where he studied television and radio. Draper is married to the former Cordia Hales of Vidor, and the couple has two children, Deidre, nine-years-old, and Guy, five.

The Drapers attended the Mims Memorial Baptist Church in Conroe. Draper is an ordained deacon, served as assistant Sunday School director, and was the Outreach director of the church.



Roy J. Dowden

Roy J. Dowden, former equipment operator at Roy S. Nelson Station near Lake Charles, has been promoted to control operations foreman at the Gulf States Utilities Company generating station.

Dowden, a native of Westlake, has worked at the station since his employment in 1967 as an operator's helper. He is a graduate of Westlake High School, and a three-year veteran of the Army.

Dowden is married to the former Wanda J. Palmer of Westlake, and they have one child, a daughter, Tina Lynette, two-years old.

20 YEAR AWARDS

SERVICE AWARDS

30 YEAR AWARDS



Bennie L. Bruce
Distribution
Beaumont



John F. Brumfield
Treasury
Beaumont



Leonard W. Desaw
Distribution
Beaumont



Willie Duhon
Treasury
Lake Charles



Emma Dru McMickin
System Engineering
Beaumont



Priscilla A. Dumas
Treasury
Beaumont



Glenn B. Haines
Sales
Beaumont



George Hayes
System Engineering
Beaumont



Muriel Hayes
System Engineering
Beaumont



Jean L. Hebert
Treasury
Lake Charles



Andrew Landry
Distribution
Lake Charles



A. O. McLaughlin
Treasury
Port Arthur



Fred J. Roffman
Distribution
Beaumont



Jack E. Strickland
Distribution
Beaumont



Austin A. Townsend
Distribution
Beaumont



Mary L. Best
Personnel
Beaumont



Tommy G. Clark
Sales
Port Arthur



Ronald D. Cunningham
Treasury
Beaumont



George E. Myers
Sales
Mid County



Dorothy Nowell
Div. Operations
Beaumont



Beatrice B. Forse
System Engineering
Beaumont



Robert Hebert
Production
Lake Charles



George E. Myers
Sales
Mid County

10 YEAR AWARDS



Emery H. Pintsch



Harold V. Petetan

Retirements



Cornelius O'Brien



Nelson B. Key



Ollie H. Schultz



George W. St. Julien

Emery H. Pintsch, insurance and claims manager in System Treasury, retires January 31, serving GSU for 45 years.

Mr. Pintsch joined the company in 1928 as an analysis clerk in Beaumont. He worked in various accounting classifications until his transfer to Navasota in 1930 as a cashier. After three years in Navasota, Mr. Pintsch returned to Beaumont as a voucher clerk. He became a construction clerk in 1935 and one year later was made a clerk in System Treasury. In 1941 he was promoted to assistant to the tax accountant, and was named a tax and insurance agent in 1948. Mr. Pintsch was further promoted to director of insurance and taxes in 1962, and became director of insurance in 1964. The same year he became insurance and claims manager, serving in the Personnel, Administrative Services and finally System Treasury Departments.

The Menasha, Wisconsin native is married to the former Helen Herring of Alvin, Texas. They have two children, Mrs. Joyce Seay and William Pintsch, both of Beaumont, and six grandchildren.

Mr. Pintsch holds memberships in the Edison Electric Institute Insurance Committee, American Society of Insurance Management, Southeastern Engineering Exchange - Legal and Claims Committee and Beaumont Chamber of Commerce.

Retirement plans will include fishing, some travel and yard and home work.

Harold V. Petetan, Production Department-Neches Station, retired from GSU on December 1, 1972. He had been with the company for 30 years.

Mr. Petetan was employed in October 1942 as a laborer at Neches Station. He was promoted to special laborer in May 1959 and remained at

Neches Station throughout his career.

Born in Lake Charles, Louisiana, Mr. Petetan married Estella Briggs, a native of Abbeville, Louisiana. They have four children, Carnell Petetan of Lake Charles, Johnny Diggs, Connie Green and Johnny W. Petetan.

The Petetans attend St. John Baptist Church in Beaumont. They plan to do a lot of fishing in the future, and Mr. Petetan will have a chance to catch up on some reading.

Cornelius M. (Obie) O'Brien, mechanical maintenance foreman-Neches Station, retires February 1 after more than 45 years service to the company.

Mr. O'Brien was employed in June 1927 as an assistant machinist, and progressed to the position of machinist in August 1936. He was then promoted to master repairman in 1945, achieved the status of maintenance foreman in 1953, and then promoted to planning supervisor in July 1963 until becoming a mechanical maintenance foreman in September 1971. All of his time with the company has been spent at Neches Station.

The Haverhill, Massachusetts native now resides in Beaumont with his wife, the former Rose Sells of Cameron, Louisiana. They have two children, Rose Marie Smith of Denton, Texas and John C. O'Brien of San Antonio, Texas.

Mr. O'Brien is president of the Patton Bible Class at Roberts Avenue Methodist Church and past scout master at Ogden School in Beaumont. His retirement plans include some traveling, golfing, fishing and bowling. Mr. O'Brien's most memorable moment at GSU came when he was promoted to planning supervisor after the planning system was organized in 1963.

Nelson B. Key, Calvert T&D employee, retired from the company December 1 after some 23 year's service.

Mr. Key began his career with GSU in 1939 as a laborer. He progressed to laborer II in 1953. All of his time was spent in Calvert.

The Alabama native married the former Jodie Lee Barefield, a Calvert native. Mr. Key is a member and deacon of Bethel Baptist Church.

Fishing, hunting and traveling will keep Mr. Key busy during his retirement. He fondly remembers his first pay check as a "very memorable moment." His thoughts were that "my check was for \$28, but at the time that was a lot of money." Mr. Key also looked forward for many years to his retirement, which was "the memorable moment I waited for and achieved."

Ollie H. Schultz (T&D-Orange), retires February 1 after some 28 years with the company.

Mr. Schultz, a native of Arkansas, joined the company as a helper in the Line Department in 1944. His entire career has been spent in Orange.

After progressing to serviceman-1st class in 1957, Mr. Schultz became a utility foreman the same year, then was promoted to line foreman in 1965, the position held at retirement.

Mr. Schultz is married to the former Nola Virginia Donaldson of Orange, Texas and they have two daughters, Mrs. Billy E. Mayfield of Lake Jackson, Texas and Mrs. Louis Nance of Orange, and five grandchildren.

Retirement plans include full time church work, as well as some deserved relaxation.

George W. St. Julien, T&D Department-Lafayette, retired November 1, 1972 after 25 years with the company.

The Youngsville, Louisiana native was employed in March 1947 as a laborer in Lafayette. In September 1951 he was promoted to car washer, the position held at his retirement.

All of his career with the company was spent in Lafayette.



If you have any story you think is interesting and would like to see in PLAIN TALKS, just contact the reporter nearest you, and he (or she) will see that it gets to the editor. A complete list of the reporters and their location can be found on the first page of each Coffee Cup section.

REPORTERS

If you have any news for "Plain Talks," simply send the information to one of the following local reporters. They will be happy to assist you in getting the material to the editor.

BATON ROUGE: Margie Force (T&D), T. Boone Chaney (T&D), Melanie Hima (T&D), Charles L. Miller (T&D), Jack Gautreaux (T&D), James W. Bello (T&D), Beverly Hull (Gas), Opal Temple (Acct.), Robert Graves (T&D), Susan Wilks, Kelton Whitehead.

BEAUMONT: Bill Toups (S.C.), Barbara Lindsey, Carolyn Motl (T&D), Ann Ogden, Edy Waltmon, Linda Marks.

CALVERT: Janis E. Wilganowski.

CLEVELAND: Pat Jones, Edd Mitchell.

CONROE: Frances Elliot.

DENHAM SPRINGS: Lenelle Juban.

GONZALES: Billy Fortenberry.

HUNTSVILLE: Karen Morley.

JENNINGS: Earl Mayfield.

LAFAYETTE: Bobbie Denais.

LAKE CHARLES: Johnnie Harris (T&D), Janet Falloway.

LA. STATION: Leslie Jeansonne.

LEWIS CREEK: James Veatch.

MADISONVILLE: Wanda H. Tinsley.

NAVASOTA: Betty Dickschat.

NECHES STATION: Gene Russell, Hazel Higginbotham.

NELSON STATION: Martha Caldwell.

ORANGE: Davie Snider.

PORT ALLEN: Adele Vavasseur.

PORT ARTHUR: Sue Williams, Lorraine Dunham (S.C.)

SABINE STATION: Kathleen Fuller.

SILSBEE: Maxie Bell.

SULPHUR: Pearl Darbonne.

WILLOW GLEN: Dora Landaiche.

WOODVILLE: Alene Waggoner.

ZACHARY: Myra Kirby.

(Editor's Note: If any of the above reporters are no longer reporting or with the company, we would appreciate knowing about it. This holds true also if any reporter's name has been omitted.)



Maxine Jones, maid - Beaumont Building Services, retired December 1 after more than 29 years with the company. She was presented a farewell gift from Ward McCurtain, manager-Beaumont Division, and received best wishes from her many friends. (from the Editor)



A real adventure and most pleasant trip was in store for Neva Risener when she recently spent two weeks in England. Her headquarters for most of the trip was London, but she also visited Salisbury, Bournemouth. Neva reports that seeing the crowds, sights and historic places were more than worth the trip. She was most impressed with the Queen's Tower and says, "The Queen's Tower, Tudor addition to the Tower of London, was built by Henry VIII as a wedding present for his second wife, Anne Boleyn. After her fall from favor, she was imprisoned here until her execution a few yards away. Henry VIII's fifth wife, Catherine Howard, and Lady Jane Grey, the nine-day queen of England, were also imprisoned and executed at the Queen's Tower. These three queens are now buried in the prison chapel. You feel you are going back in time when you see these places." Neva is a clerk in the Orange accounting department. (from Orange District)



Morris J. (Dude) Johnson, Beaumont commercial sales representative, recently became a year older. On the day of his birthday, fellow workers surprised him with a "Happy Birthday" message taped up where he was sure to see it. A belated Happy Birthday, Dude! (from the Editor)



"For Service . . . Above And Beyond The Call Of Duty" read the inscription on the cake. The cake was presented to Howard "Pappy" Sandefer, Beaumont Residential Sales Representative, by employees of the Beaumont Customer Accounts and Credit and Collections Departments. Pappy was temporarily assigned to help out in these two departments during the high-bill season. There's no doubt that his assistance was greatly appreciated. From left to right are Brenda Shuff, Charlotte Bass, Pappy Sandefer, Gina Collins, Darlene Patterson, Pluma Lindsey, Barbara Burris, Jo Sterling and Patsy LaFleur. (from the Editor)



Mr. and Mrs. J. Ollie Bauman recently celebrated their 50th wedding anniversary, with the celebration being held in their daughter's home in Baton Rouge. Mr. Bauman was employed as an electrical maintenance supervisor - Louisiana Station when he retired from the company in August of 1966. (from the Editor)



Earnest Dawson, residential sales representative in Conroe, was the winner of the November 10th drawing held during the heat conversion campaign. Earnest received four quail, donated by Bill Richard, Western Division manager. Conroe personnel conducting the drawing were, from left to right, Bob Sigbee-residential sales representative, V. R. Norvell-sales superintendent and Marilyn Key-sales stenographer. (from the Editor)



A surprise birthday was held on the second floor of the Beaumont office for Ken Jumel, director-Payroll and Benefits Administration. Mr. Jumel's staff made all the arrangements for the special occasion, and a certain editor of a certain magazine almost let the cat out of the bag when he unsuspectingly came in to take a picture of the birthday celebrity. It seems that this editor didn't know the party was a surprise, but luckily he happened in just as the event was about to take place. Joining in the party were, from left to right, Carolyn Lee, Jeannie DuBose, Jean Spitznagle, Helen Byrd, Betty Jo Lum, Mike Chapman, Janice Mitchell, Ken Jumel and Doris Flowers. (from the Editor)



On Sunday, October 5, two Gulf Staters, Raymond Adrio and Robert LeBert, captured the distinction of being the winning team of the first Texas 100 dirt track race held at Motorama Speedway. The Speedway, a quarter-mile track, is located between Beaumont and China, Texas. Raymond and Robert are equal owners of the car, which has a six cylinder engine, and won the race over many out-of-state eight cylinder cars. Their prize for winning the race was a nice sum of cash and a large trophy. Robert, the driver of the car, is a serviceman first class in Sour Lake, and Raymond, who handles the mechanical aspects of the car, is a senior engineering assistant in Beaumont System Operations. Congratulations, gentlemen, and continued success in the future. (from the Editor)

Carol Daigle, clerk in Baton Rouge Customer Accounting, became the bride of Bill Hancock in a home wedding on November 27. After a wedding trip to the Mississippi Gulf Coast, they are at home in Baton Rouge. (from Opal Temple)

The Monte Sano Presbyterian Church formed the setting on December 2 for the wedding of Debbie Verbois and Emmett McAdams. Debbie is a clerk in Baton Rouge Customer Accounting. The McAdams are now at home in Baton Rouge after a wedding trip to Toledo Bend. (from Opal Temple)

We would like to say welcome to Patricia (Pat) Wakefield, who has taken Linda McSwain's place in the T&D Engineering Department at the Beaumont Service Center. Pat was previously employed with the company from 1964-66. Some of you might remember her as Pat Kaluza. She was employed at the Service Center, so she feels right at home with her new job. (from Carolyn Motl)



Carolyn Ashford, clerk in Baton Rouge Credit & Collections, was married to Jimmy Odom on December 1 at the Winbourne Baptist Church. (from Opal Temple)

Linda McSwain, wife of Benny McSwain, is taking a leave of absence to have their first child. Linda and Benny have been married eight years, and she says it doesn't matter to them which gender the baby is; either will be just fine. The due date for "Little McSwain" is February 24. Linda has been with the company as a clerk for 5½ years in the T&D Engineering Department at the Beaumont Service Center. On December 1, Linda's last day, a group of co-workers took her out to eat at the Red Carpet Inn, then held a party in her honor that afternoon. She received a bassinet for the baby as a going away gift. Good luck, Linda! We will be looking forward to your return to GSU after the baby arrives. Shown are: First Row—Linda McSwain, Pat Wakefield; Second Row—Ellen Bean, Carolyn Motl, Mary Leasure; Third Row—Susan Tucker, Nancy Mathews, Joyce Smith, Rose Ann Johnson. (from Carolyn Motl)

Marsha Vaglica, wife of Charles (Glen) Vaglica, assistant storekeeper-Beaumont Storeroom, gave birth to a girl, Stephanie Rose, October 11 at Women's and Children's Hospital in Beaumont. The new addition to the family weighed a healthy 8 lbs. 3½ ozs. (from Carolyn Motl)



This blond beauty is Theresa LaFosse, daughter of Harold LaFosse, administrative assistant - Beaumont Treasury. Theresa was chosen 1972 Kelly High School Homecoming Queen during the Kelly — St. Pius X football game (won by Kelly). She is an 18 year-old senior. (from the Editor)



Bryan Foss, son of Charles Foss (Commercial Sales - Baton Rouge), received these trophies at the Regional Industrial Arts Fair held at LSU and at the state-wide Convention of Industrial Arts. Bryan is 14, and a ninth grade student at Westlake Junior High. (from The Editor)

New officers at the Evening Optimist Club of Vidor were installed at a recent meeting. The new first vice president is Gene Pairett, a residential sales representative in Beaumont Division Sales. Congratulations to Gene on his new officership with the Vidor Optimists. (from the Editor)



Mildred Tribble, Beaumont home service coordinator, recently attended a utility home service marketing and management seminar at Whirlpool Corporation's Educational Center in Benton Harbor, Michigan. The unique seminar was tailored specifically to the needs and challenges of directors of home service activities and consumer affairs in the area of marketing and management. (from the Editor)

The first annual Christmas party held at Lewis Creek was deemed "quite successful." The presentation of toys to the children was performed by none other than Santa Claus, with refreshments, conversation and happy children highlighting the party (see pictures in album-this issue). The party was such a success that we are sure Santa will return next year. All of the families were presented with a picture of their children receiving a gift from Santa. (from James T. Veatch)



Linda Billeaudeau, Customer Relations-Baton Rouge, became the bride of Robert Luneau, Electric Service-Baton Rouge, on September 16 in a home ceremony at Palmetto, La. They are making their home in Port Allen. (from Opal Temple)



Brenda Comeaux, billing clerk-Beaumont System Billing Department, left the company on October 27 after nearly two years of service, to join the ranks of the married. Fellow employees held a going-away party for her, presenting her with a farewell gift. Shown with Brenda is the lucky man, Kyle Smith. They were married November 11. (from the Editor)



A new addition to the Daigle family arrived February 20. Greg Keith Daigle was six months old when this picture was taken, and by the looks of the smile on his face, he must have enjoyed his trip to the photographer. His proud father is Fabien J. Daigle, foreman in the Baton Rouge Substation Department. (from **Melanie Hima**)



Friends and co-workers of Linda Norton got together to wish Linda well as she left the company to become a mother. Looking on are, from left to right, Jeannie DuBose, Doris Flowers, Carolyn Lee, Jean Spitznagle, Linda Norton, Ken Jumel, LaMelle Triplett, Helen Byrd, Mike Chapman, Wanda Wolfe, and Betty Joe Lum. (from **Pat McMeel**)



Skippy Green (Customer Acct.) is still shaking his head over this. The day started off normally, but when getting to his office one day last month he was greeted by these six lovely birds. A glance at the calendar told him it was Halloween. From left to right, the birds are Pluma Lindsey, Gina Collins, Phyllis Lancon, Brenda Shuff, Patsy LaFleur and Charlotte Bass. Customer accounting will never be the same again. (from **Pat McMeel**)



This picture was taken in the Conroe auditorium at an employee "noon get-together" to view the film "The Interviewers" and the film of the bird commercials, which was not seen in the Western Division TV viewing area. Everyone brought a sandwich—chips, drinks and dessert were furnished by the sales department. Between films, Charles DeCuir, Western Division sales supervisor, told all employees of the advantages of converting to electric heat during the conversion campaign. (from **the Editor**)



Jimmy Drouen, laborer in the Port Arthur T&D Line Department, was married to Eva Dell Mathews on October 28. They were married at Saint Ann Catholic Church in Lafayette, Louisiana. (from **Helen Powell**)

On Friday night, December 15, Huntsville held its annual Christmas party (see Christmas album in this issue). Approximately fifty people attended, including one Santa Claus and a roomful of enthusiastic kids. Gifts were handed out by Santa and there were quite a few promises of "I've been a good boy, Santa!" Barbequed deer plus all the extras were enjoyed by all. (from **Karen Morley**)



A surprise farewell party was held December 8 in the Conroe auditorium for Mary Hudspeth Griffin (front center), a departmental clerk in the Conroe Meter Department. Mary is retiring in order to become a full-time housewife. Her husband is Clarence Griffin, meterman 1st class in the Conroe Meter Department. Helping Mary and fellow employees enjoy the special occasion was her son, Wayne, seated next to her. Going-away gifts presented to Mary included a beautiful centerpiece and perfume. (from **Bobbie Burke**)



"It's a girl" for Gayle W. Nixon, 1st class mechanic in the Baton Rouge Substation Department. Angela Gayle Nixon was born November 11, 1972 and weighed six pounds. This is the first child for Mr. and Mrs. Nixon. Congratulations! (from **Melanie Hima**)



The Baton Rouge Division's accounting and sales departments' fishermen spent a profitable weekend on and at Lake Bruin, Newellton, Louisiana, recently. The group landed approximately 75 bass and each of them says, "You should have seen the ones that got away!"

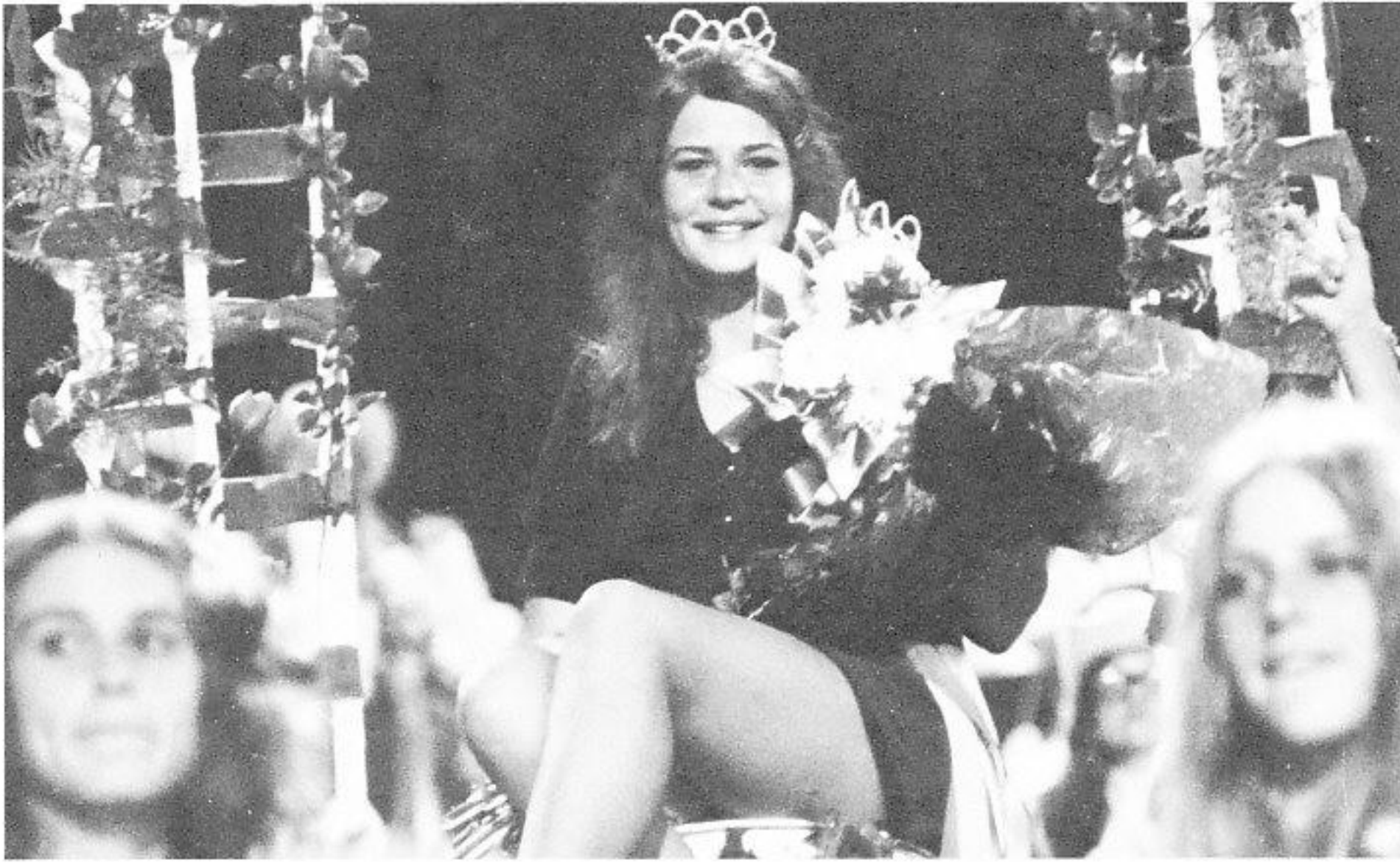
Those involved in the line-wetting venture were: V. J. Braud, Don Hood, George Davis, Bob Davis, Bill Hays, Jim Fletcher, Wayne Hiter, J. L. Clement, Walter Benjamin, Aubrey Glover, Robert Petry, George Irvin, Don Sullivan and Dolph McKowen. Pictured left to right are J. L. Clement, V. J. Braud and Aubrey Glover. (from **the Editor**)



Looking for a good fishing spot? On a recent trip to Grand Isle, Louisiana, a crew of Gulf Staters brought in 750 lbs. of red snapper and croaker. The top red snapper weighed in at seven pounds and was caught by Jim Taylor. This picture was shown on a local television station. From left to right are Austin Mary, Jim Taylor, George and Melanie Hima, Earl Julian and Chuck Taylor. (from **Melanie Hima**)



Linda Allen (Baton Rouge-Relay and Communications Department) recently received recognition as the outstanding graduate of the Cooperative Office Education program at Glen Oaks Senior High School. Linda has been a full-time employee of the company for the last three years. Prior to her transfer to her present position, she was with the Customer Accounting Department. Linda had also worked as a part-time employee in the Purchasing and Personnel Department while attending the COE program. (from **Opal Temple**)



Jo Ellen Jennings, a senior at Stephen F. Austin High School, was named 1972 Homecoming Queen during half-time activities of the Austin High-Jasper Bulldogs football game, played October 13. Miss Jennings is the daughter of Mr. and Mrs. Joseph Jennings. Mr. Jennings is a utility foreman in the Port Arthur T&D Department. Jo Ellen is also the school's head cheerleader and secretary of the Student Council, a member of the National Honor Society and volleyball team, and was first runner-up for Miss Junior Achievement in the Golden Triangle. She was selected Homecoming Queen by student vote from a field of six candidates. (from **Loraine Dunham**)



Several retired employees were on hand to extend best wishes to Mr. Reeves Garrison (Supervisor-Baton Rouge Accounting) on his retirement day and to join present employees as the retirement gifts were opened by Mr. Garrison. Left to right in picture, Arthur Babin, Sedonia Louviere, Donald Sullivan, Ann Dance, Shelia Broyles, Howard Charlton, Ben Campo, Maxie Fair, Opal Temple, Joe Jones, Jim Towers, Reeves Garrison, and Jack Worthy. (from **Opal Temple**)



The Baton Rouge Northern District held its annual Christmas supper in the home of W. B. McMorris, Northern District superintendent. Smoked turkey with all the trimmings was served, and everyone had a good time and too much to eat. Shown enjoying the occasion are (left to right) Pauline Burdette, local office clerk, and her husband Bobby, and Julius Courtney, salesman, and his wife Louise. (from **Myra Kirby**)



Pam Rea (seated) is surrounded by her friends and co-workers in the Records Management Department in Beaumont prior to her leaving the company to become a full time housewife. We hear she had to hire a truck to haul all her gifts away. (from **Pat McMeel**)



Jerald Adams (Beaumont T&D) recently killed his first eight-point buck, with a spread of 16 inches. Jerald was hunting in the Mill Creek Hunting Club. (from **Bill Toups**)



Pictured with the deer horns is O. F. "Skeeter" Peveto of the Orange line department. Every year Skeeter makes a deer hunting trip and never fails in making a kill. This year it was a ten pointer. (from **Orange District**)



This is three month old Micah Trent Petry, son of Michael Petry-building equipment operator in Beaumont Building Services. Micah was born October 16, 1972 and weighed 7 pounds 3 ounces. Congratulations to the Petrys on their new son. (from **the Editor**)



Betty Kelly, who was departmental clerk in the Orange service department, left the first of December for a leave of absence to begin her family. Fellow employees had a get-together for her, presenting her with a Boston rocker and other gifts. She's still a real member of our GSU family because her husband Tom works in the Orange substation department. (from **Orange District**)



An event occurred in the Western Division that greatly added to the Thanksgiving holiday of a certain member of the sales staff. Bill Burke (center), residential sales representative, was presented a turkey for being the leader in the heat conversion campaign at the midway point. Charles DeCuir, sales supervisor, presented Bill with the turkey, while Emily Fleming, home service advisor, contributed a recipe book containing information on the proper method of baking the prize bird. (from **the Editor**)



Shirley Malbrough, former Baton Rouge Cashier, is shown looking at her farewell gift from her co-workers. Shirley and her family have moved to Titusville, Florida. In writing to former co-workers, Shirley gave a vivid description of the launch of Apollo 17. (from **Opal Temple**)



Veleria Ann Boudreaux became the bride of Mr. Zack Shelton on November 25, 1972. Miss Boudreaux is a former clerk in the Customer Accounting Department in Lake Charles, Louisiana. Mr. Shelton is employed by the FBI in New Orleans and is also attending Loyola. The wedding was held at the Trinity United Methodist Church in Jennings, Louisiana, with the father of the groom performing the ceremony. The couple will reside in New Orleans, Louisiana. (from **Janet Followay**)



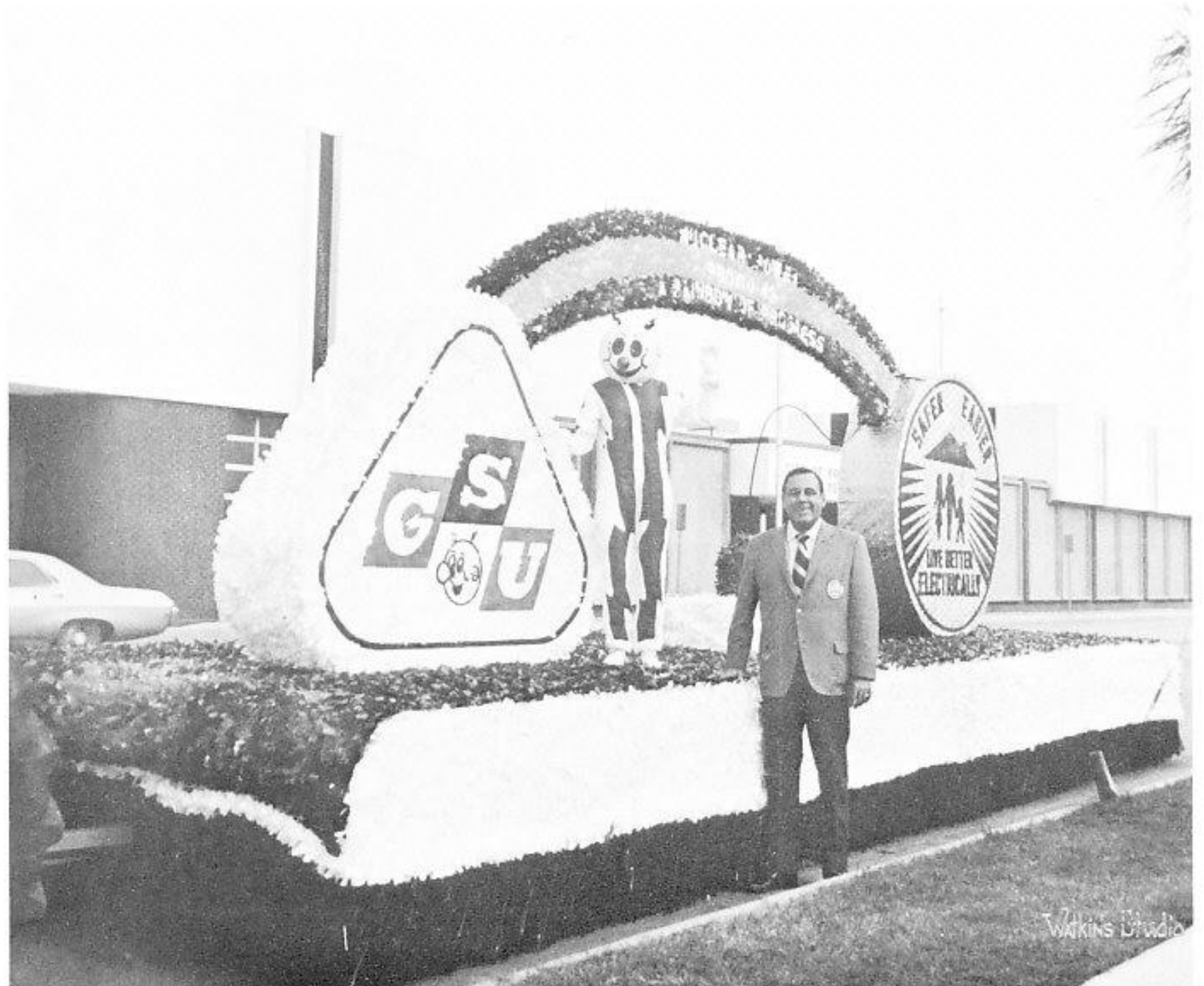
The girls in customer accounting are always getting together for something. This time it is to wish good luck to Marita Slevin (second from right) who resigned from the company. Looking on are, from left to right, Phyllis Lancon, Donna Ray, Beth Davis, DeWilla Boone, Betty Baker, Brenda Shuff, Barbara Burris and Betty Bass. (from **Pat McMeel**)



The arrival of Bryan Heath Lanier on September 13 made very proud grandparents of Mr. and Mrs. Roy Franques. Bryan was 20 $\frac{3}{4}$ inches long and weighed 7 lbs. 14 ozs. He was three weeks old at the time of this picture. Grandfather Franques is a Right of Way man in Lake Charles. (from **Johnnie Harris**)

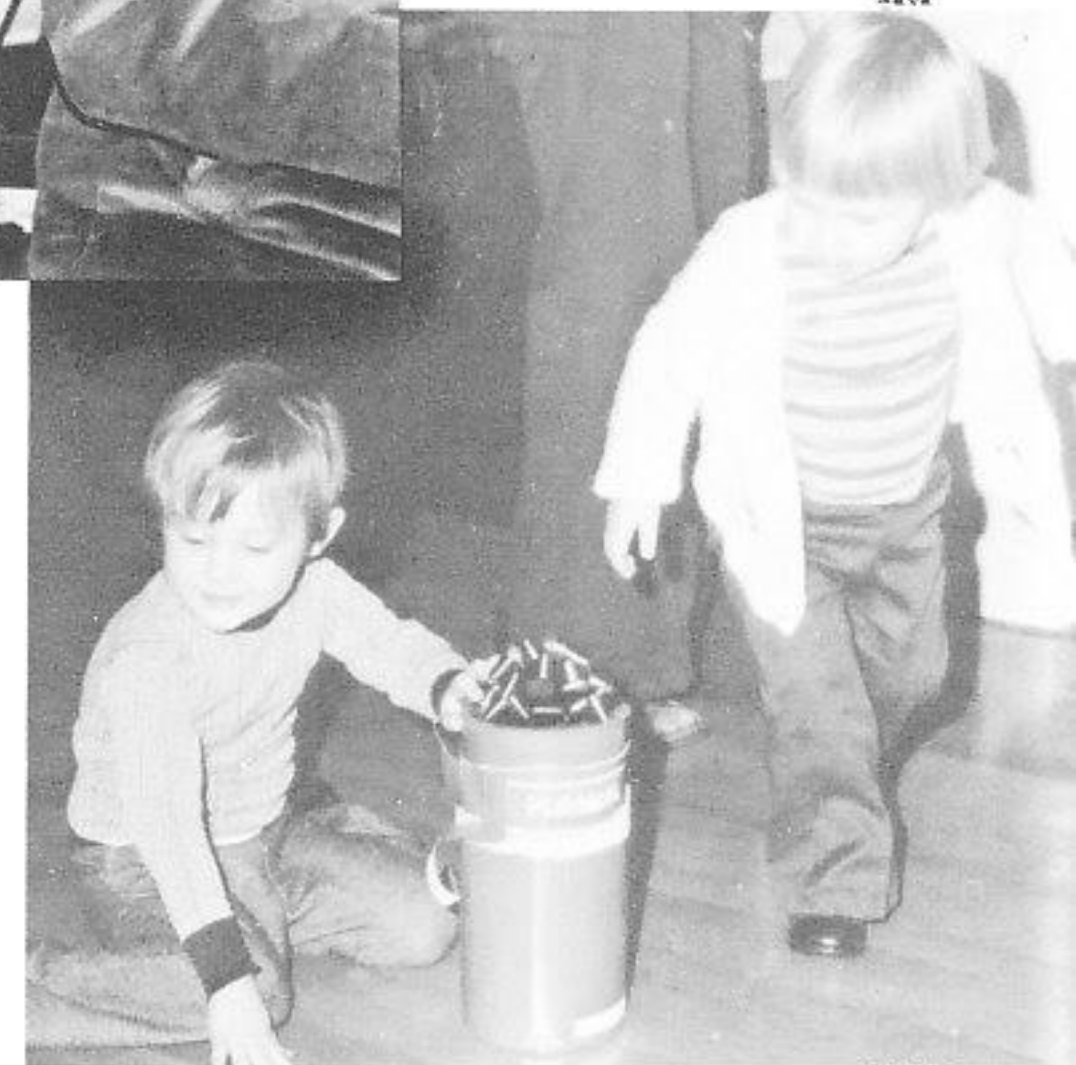


This is Kenneth David Rogers, son of Mr. and Mrs. David Rogers of Vidor. David is an engineering design assistant in Beaumont System Engineering. Kenneth was born August 14, and weighed 8 lbs. 6 ozs. (from **the Editor**)



This was Port Arthur Division's award-winning entry in the 20th Annual CavOilCade Parade held in Port Arthur. The float won first prize in the commercial division, with its nuclear theme signifying the coming of nuclear power. Jim Stelly, Port Arthur Division sales superintendent, had a special interest in the float—that's his daughter Jamye standing with him. Jamye consented to wear the Reddy Kilowatt suit and ride on the float during the parade. (from **the Editor**)

Christmas Photo Album

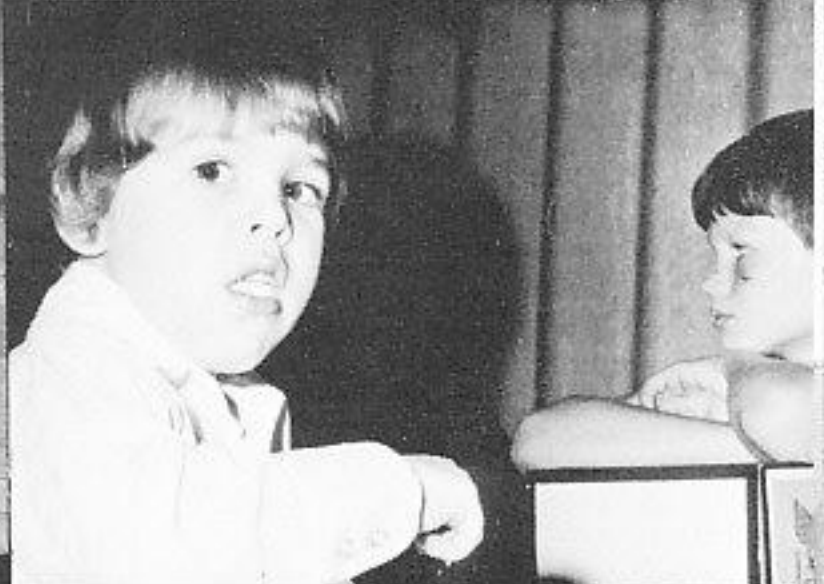
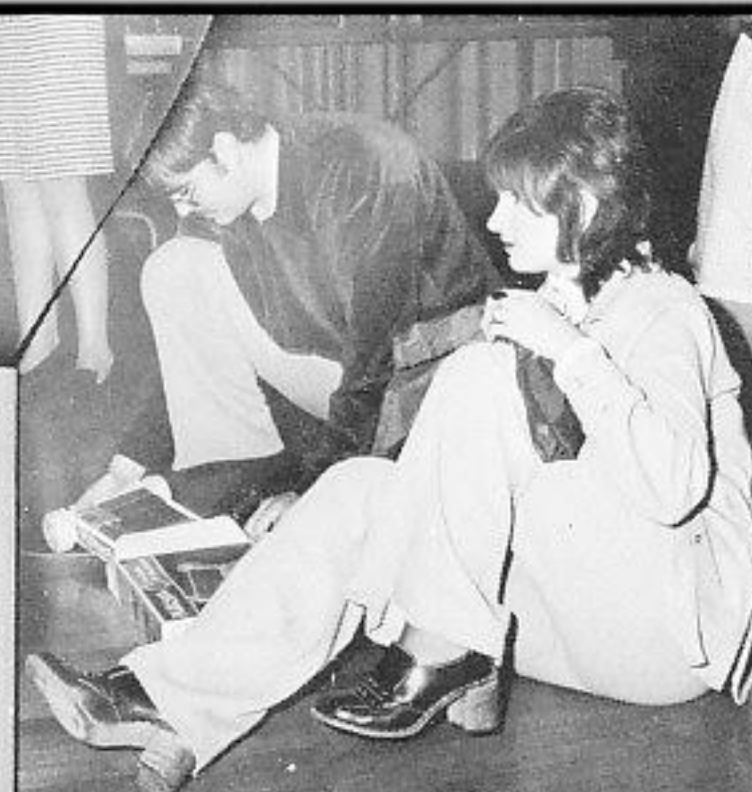


S O R R Y

PLAIN TALKS is sorry that not every picture taken could be used. Pictures may be picked up in the PLAIN TALKS office in Beaumont.

Some areas of the company were not represented due to the fact that no pictures were received from those areas.

BEAUMONT DIVISION



BEAUMONT

ENGINEERING DEPARTMENT



BEAUMONT

SERVICE CENTER



WOODVILLE

DAYTON



SABINE STATION



LAFAYETTE



CALVERT



DENHAM SPRINGS



MADISONVILLE



GONZALES



CONROE



CLEVELAND



LEWIS CREEK



HUNTSVILLE

JENNINGS



NAVASOTA

BATON ROUGE



**P
O
R
T
A
L
L
E
N**



**N
O
R
T
H
E
R
N
D
I
S
T
R
I
C
T**



**P
O
R
T
A
R
T
H
U
R**





Welcome Aboard!

SYSTEM DEPARTMENTS

Information & Data Services

Daigle, Kathryn S., Beaumont, PBX Operator (Records)

System Treasury

Face, Vicky L., Beaumont, Billing Clerk - Sys Bill Recds

BEAUMONT DIVISION

Production

Ketcherside, Benjamin W., Beaumont, Mechanic Helper (Mech) Neches Sta

Distribution

Moses, Floyd C., Jr., Beaumont, Laborer I - T&D (S/Sta)

Woodfin, John T., Beaumont, Laborer I - T&D (S/Sta)

Treasury

Watson, Carolyn L., Beaumont, Clerk - Cr & Col

Durden, Johnnie C., Beaumont, Clerk - Cr & Col

Jarreau, Carolyn R., Vidor, Local Office Clerk

Broadway, Douglas F., Vidor, Meter Reader

PORT ARTHUR DIVISION

Production

Adcock, Billy S., Bridge City, Equipment Operator - Sabine Sta

Bunner, Charles R., Bridge City, Equipment Operator - Sabine Sta

Cerami, James T., Bridge City, Equipment Operator - Sabine Sta

Distribution

Leger, Nelson M., Port Arthur, Laborer I - T&D Dept (Line)

Treasury

Romero, Frank L., Port Arthur, Meter Reader

Moreno, Robert, Port Arthur, Meter Reader

Bentley, Marilyn S., Port Arthur, Clerk - Cust Acctg

WESTERN DIVISION

Production

Rucker, Earnest W., Conroe, Mechanic Helper (Mech)

Lewis Creek Sta

Distribution

Brown, David E., Conroe, Laborer I - T&D (Line)

Mills, Patricia G., Conroe, Dept Clerk - T&D (Eng)

Kyle, Tommy R., Navasota, Lineman 3/C - T&D

Division Sales

McHam, Jerry D., Huntsville, Residential Sales Repr (Qualifying Date)

BATON ROUGE DIVISION

Production

Jolissaint, Larry F., Baton Rouge, Operator's Helper - La Sta

Lambert, Benny, Baton Rouge, Operator's Helper - La Sta

Peak, Darrell L., Baton Rouge, Operator's Helper - La Sta

Newman, Clyde W., Baton Rouge, Equipment Operator - W/Glen Sta (Qualifying Date)

Distribution

Langlois, Albert K., Baton Rouge, Helper - T&D Dept (S/Sta)

Hebert, Dwain D., Baton Rouge, Helper - T&D Dept (S/Sta)

Shaw, Charles G., Baton Rouge, Helper - T&D Dept (Line)

Pourciau, Michael W., Baton Rouge, Helper - T&D Dept (Line)

Fuentes, Russell G., Baton Rouge, Helper - T&D Dept (Line)

Garrett, Joseph W., Baton Rouge, Helper - T&D Dept (S/Sta)

Barlow, William J., Baton Rouge, Helper - T&D Dept (Line)

McMahon, Rickard J., Baton Rouge, Helper - T&D Dept (Line)

Engler, Lloyd J., Baton Rouge, Helper - T&D Dept (Line)

Braud, Michael P., Baton Rouge, Helper - T&D Dept (Line)

Broussard, Renford L., Baton Rouge, Helper - T&D Dept (Line)

Covington, Jeffery W., Baton Rouge, Helper - T&D Dept (Line)

Martin, Jerry W., Baton Rouge, Helper - T&D Dept (Line)

Treasury

Ogden, Jerry L., Baton Rouge, Meter Reader

Brown, Alfred R., Baton Rouge, Meter Reader

Mitchell, Darese L., Baton Rouge, Meter Reader

Penton, Kevin L., Baton Rouge, Meter Reader

Austin, Dona L., Baton Rouge, Clerk - Cr & Col

Warner, Marcia B., Clinton, Local Office Clerk (Qualifying Date)

LAKE CHARLES DIVISION

Production

Royer, Atwood M., Lake Charles, Laborer I - Nelson Sta

Distribution

Duplechin, James C., Lake Charles, Laborer I - T&D (Garage)

Douglas, Linda B., Lake Charles, Dept Clerk - T&D (Garage) (Qualifying Date)

Jenkins, Byron J., Lafayette, Helper - T&D Dept (S/Sta)

Treasury

Ray, Sandra D., Sulphur, Local Office Clerk (Qualifying Date)

Division Sales

Jackson, Rebecca R., Lake Charles, Residential Sales Repr (Qualifying Date)

PART-TIME AND/OR TEMPORARY EMPLOYEES

Fitzgerald, James P., Beaumont, Dept Clerk - I&DS (Rec-Mail Room) Part-time

Piper, Rose B., Navasota, Dept Clerk - T&D (Gar) Part-time

MANAGEMENT EMPLOYEES

Douglas, William H., Baton Rouge, Director-Personnel Rela (Personnel)

Jones, Frank A., Baton Rouge, Public Relations Repr (Divn Sales)

DINING WITH DEBBIE



Home Service Advisor Debbie Zemanek from Huntsville provides us with this month's new recipes. Debbie has a Bachelor of Arts in Teaching in Home Economics degree, and is presently working on her master's degree at Sam Houston State University. The Houston native holds memberships in Delta Zeta Sorority at S.H.S.U., where she is pledge advisor, and Home Economists in Business. Her recipes are for a ladies' luncheon, and the hostess may select either a heavy (cake) or light (Frost Whip) dessert.

POPPY SEED DRESSING

- 3/4 cup sugar
- 1 tsp. dry mustard
- 1 tsp. salt
- 1/3 cup vinegar
- 1 1/2 Tbsps. onion juice
- 1 cup salad oil
- 1 1/2 Tbsps. poppy seed

Mix sugar, mustard, salt and vinegar. Add onion juice. Add oil while constantly beating slowly. Continue to beat until dressing is thick. Serve over mixed fresh fruit.

SHRIMP SALAD

- 1 cup macaroni
- 3 hard boiled eggs
- 1 green onion
- 1 green pepper
- 2 cans shrimp
- 3 tomatoes
- 3 radishes
- 3 cucumbers
- 1/4 cup mayonnaise

Cook the macaroni. Cook the eggs. Prepare vegetables by cutting into small pieces. Combine all ingredients and chill. Serves 5.

HAWAIIAN MUFFINS

- One 14 oz. pkg. orange muffin mix
- 1/2 cup flaked coconut
- One 8 3/4 oz. can crushed pineapple
- 1 egg
- 2/3 cup milk
- One 3 oz. pkg. cream cheese

Combine muffin mix and coconut. Drain pineapple, reserving 1 Tbsp. syrup. Add pineapple, beaten egg and milk to dry ingredients. Blend only till dry ingredients are moistened. Fill greased muffin pans 2/3 full. Bake in hot oven (400 degrees) for 15 to 20 minutes, or until done. Beat cream cheese until fluffy. Add the reserved pineapple syrup; beat well. Serve with hot muffins. Makes 12 to 16.

CRAZY CHOCOLATE CAKE

- 2 cups flour
- 2 cups sugar
- 1 stick margarine
- 1/2 cup Crisco
- 4 Tbsps. cocoa
- 1 cup water
- 1/2 cup buttermilk
- 2 eggs
- 1 tsp. soda
- 1 tsp. vanilla
- 1 tsp. cinnamon

Sift flour and sugar together in a large bowl. Set aside. Combine margarine, Crisco, cocoa and water in a sauce pan and bring to a boil. Add to the flour and sugar mixture. Mix well. Add buttermilk, eggs, soda, vanilla and cinnamon. Beat until smooth and pour into greased and floured 10 inch tube bundt pan. Bake for 35 minutes at 350 degrees.

CHOCOLATE ICING

- 1 stick margarine
 - 4 Tbsp. cocoa
 - 6 Tbsps. milk
 - 3/4 box powdered sugar
- Mix margarine, cocoa, milk in pan over medium heat. After ingredients have melted, pour into a large bowl of sifted powdered sugar. Mix well. Pour over cake.

EASY FRUIT WHIP

- 1 pkg. cherry-flavored gelatin
 - 1 cup hot water
 - 1 cup cherry syrup
 - 1 cup red cherries
- Dissolve gelatin in hot water. Add cherry syrup. Chill until partially set. Beat until fluffy. Fold in cherries. Chill in oiled mold until firm. Serves 6 to 8.

AFTER FIVE DAYS RETURN TO:



P. O. BOX 2951
BEAUMONT, TEXAS

RETURN POSTAGE GUARANTEED

Alfred E. Naylor
345 Masterson Drive
Beaumont, Texas 77707

Bulk Rate
U. S. POSTAGE PAID
Beaumont, Texas
Permit No. 11

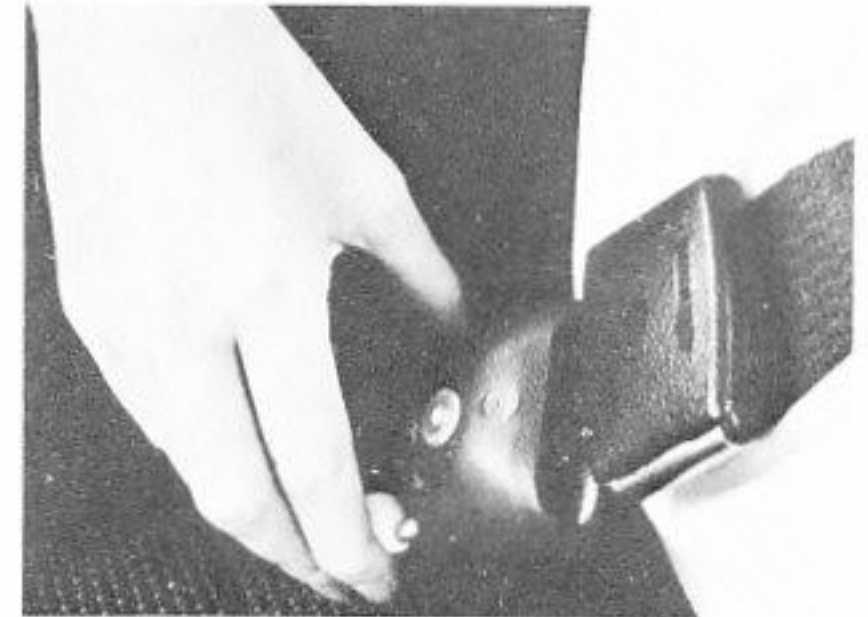
HOW LONG WILL YOUR BELT LAST?

Safety belts have been standard equipment in the front seats of new car models since 1964, so some are more than five years old. What is their life expectancy—how often should safety belts be replaced?

There's no rigid rule. If at any time the webbing or the hardware becomes damaged, it loses its total ability to protect and it should be replaced immediately. Periodic inspection is necessary. Here's how to do it yourself:

1. Examine sections of webbing that make contact with metal hardware. Continued use can abrade the woven material and could lead to weakening of the fabric.
2. Check metal hardware for cracked or damaged areas.
3. Check all spring mechanisms for proper functioning.
4. Check for webbing slippage at attachment points over cams or bars.

A defect in a safety belt may or may not alter its effectiveness in a crash. Since that can't be predicted, any obviously defective belt should be replaced with a new one.



There are two popular types of trigger-release mechanisms. The one at the top, found in the rear seats of Volkswagens, is actuated by squeezing the lever head with the index finger while the thumb presses against the buckle housing. The release mechanism in the bottom photo is a lever in the housing that, when pulled back, pops the belt end up like a piece of toast.