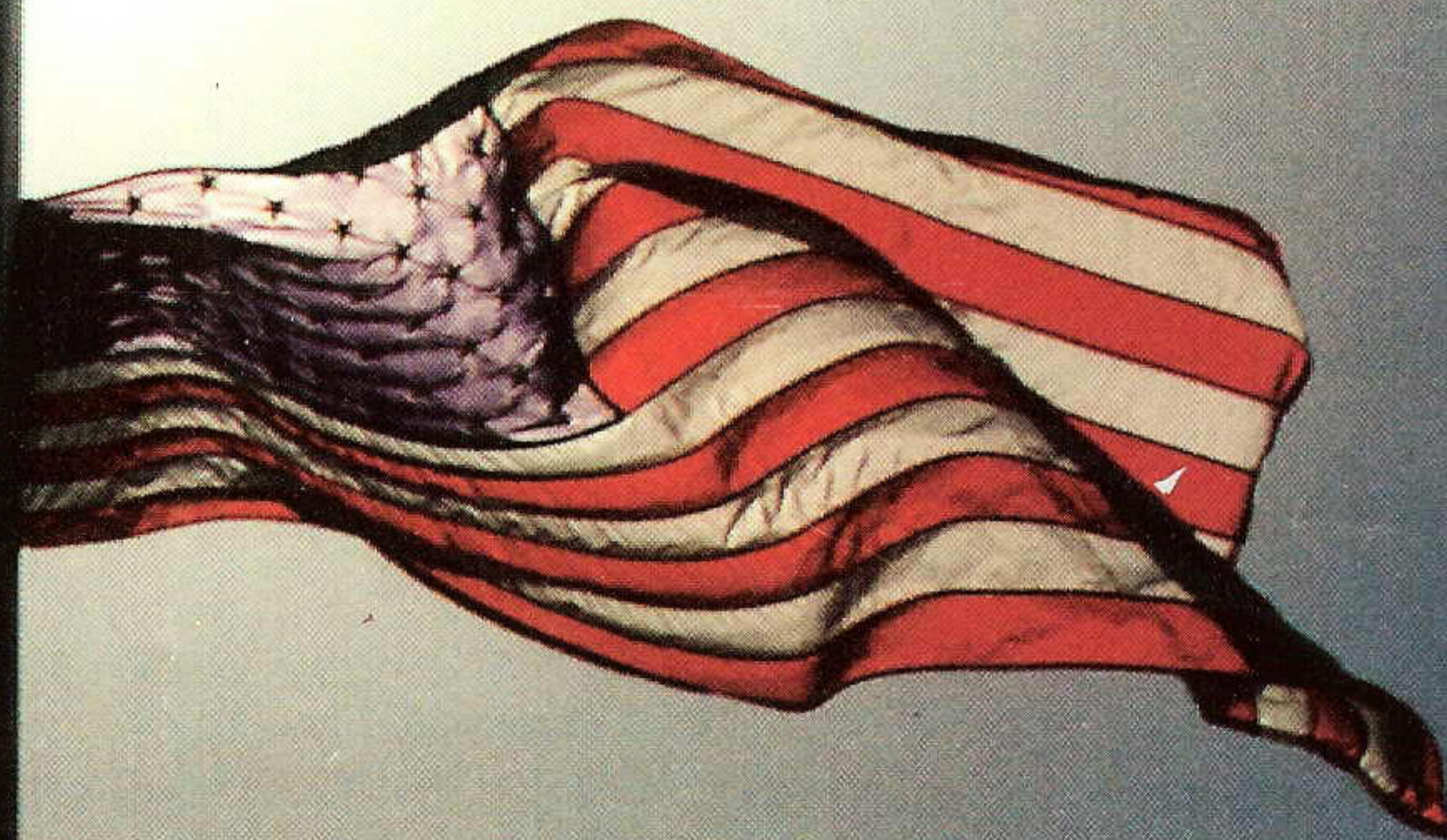


# PLAIN TALKS

July/August 1993

Volume 72 Number 4



*In memory of  
Allen "Butch" Daniel*

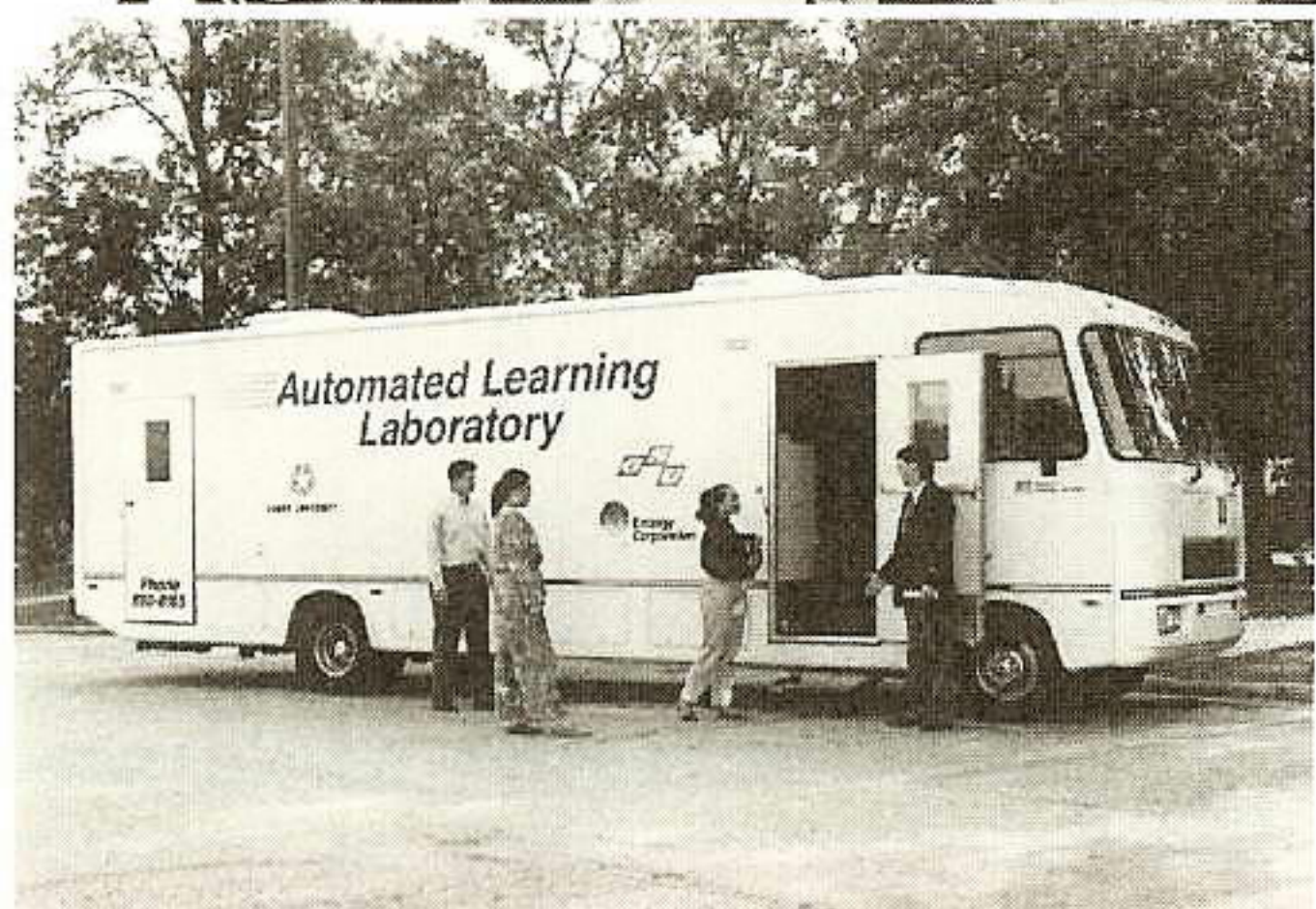


# PLAIN TALKS

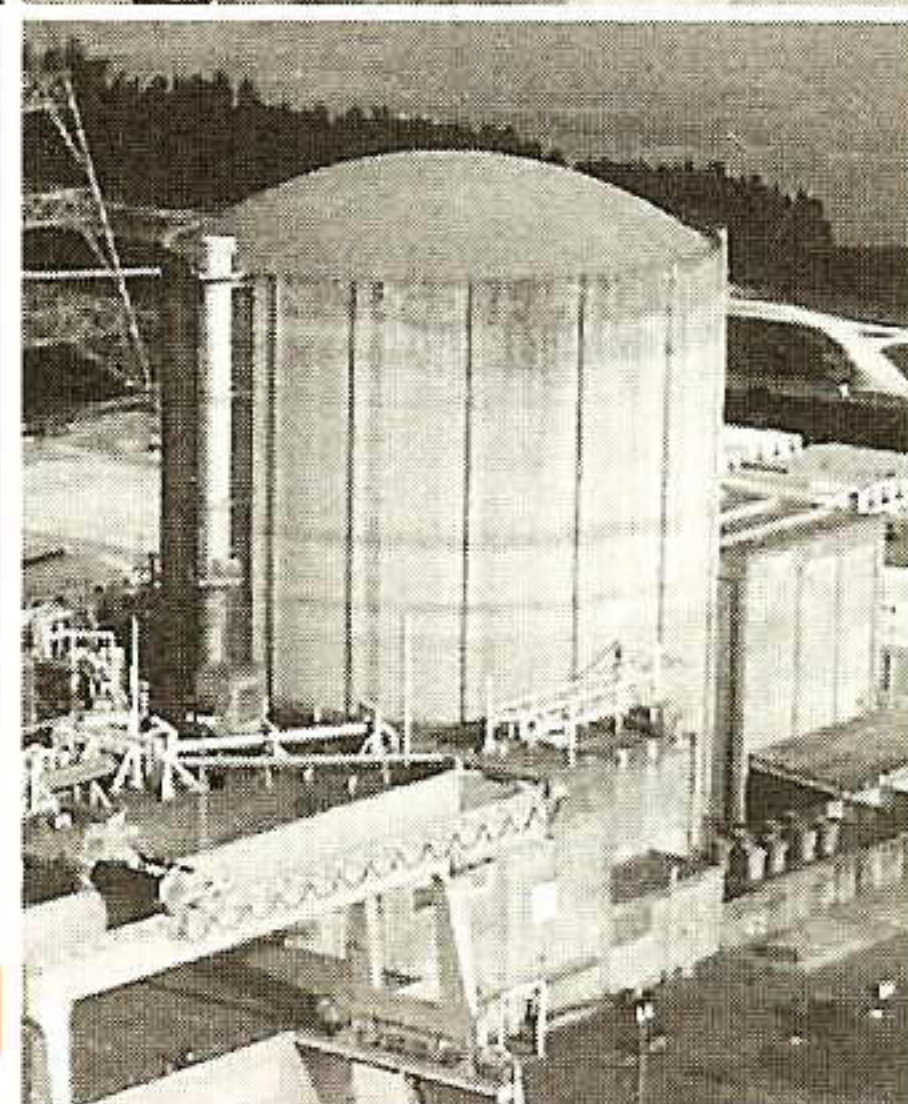
July/August 1993 Volume 72 Number 4

9

12



8



4

## CONTENTS

### GSU remembers Allen "Butch" Daniel

- 3 On July 22, Allen "Butch" Daniel, electrician-1st class, passed away. His Sabine Station coworkers remember him as a fun-loving person.

### Meet the Entergy nuclear team

- 4 River Bend will become Entergy's fourth nuclear power plant. Here is an introduction to Entergy's nuclear program by Entergy's Tom Dickson.

### Employees learn how GSU, Entergy to mesh

- 7 In July and August, meetings were held across the system to show employees how GSU maps to the Entergy Strategic Business Unit structure.

### Beaumont company shops at the education MALL

- 8 American Valve & Hydrant of Beaumont becomes the first customer of the Mobile Automated Learning Laboratory donated by Entergy.

### Street speaks at Edison Museum in Canada

- 9 Jill Street, curator - Edison Plaza Museum, traveled to Canada this past summer to make a presentation at the Thomas Edison Museum.

### The GSU Gallery of Leaders

- 10 Graphics Representative Linka Peveto drew portraits of GSU's leaders that are displayed on the 17th floor of Edison Plaza and now in **Plain Talks**.

### Lake Charles safety committee builds an arc

- 12 Customers of all ages in Lake Charles are taught about the dangers of electricity with a new arc demonstrator, designed and created by the Lake Charles safety committee.

### Glass, Worthy retirement a milestone

- 13 After 81 years of service collectively, Charlie Glass and Jack Worthy, two Gulf States executives, retire taking with them years of experience and memories.

### "View From A Lineman's Eyes"

- 14 David Stott, lineman-1st class from Silsbee, describes the life of a lineman in a poem he wrote.

- 15 Newsbriefs  
16 On The Move

- 18 Service Anniversaries  
19 Mailbox

### About the cover

The flag at Sabine Station flies at half staff in memory of Allen "Butch" Daniel who passed away July 22. Flags at GSU locations throughout the service area were flown at half staff. Photo by Scott Harper.



Published for employees and retirees of Gulf States Utilities Company. No portion of the contents of this magazine may be reproduced without written permission of the publisher. Address all communications to PLAIN TALKS, Corporate Communications, Gulf States Utilities Company, P. O. Box 2951, Beaumont, Texas 77704, Phone (409) 838-6631.

**Manager-Corporate Communications:**  
Kim McMurray

**Executive Editor:**  
Betty Gavora

**Editor:**  
Scott Harper

### Correspondents:

Robert Adams  
Vickie Albert  
Michael Allen  
Laurie Bayer  
Ronnie Bordelon  
Mamie Burrell  
Lisa Creekbaum  
Betty Dickschat  
Cherie Ducote  
Ricky Earnst  
Sharon Englade  
Pris Gallagher  
Charlotte Gautreau  
Susan Gilley  
Rhonda Haskins  
Rick Harvin  
Connie Herford  
Barbara Hopkins  
Tina Hunt  
Ray Jackson  
Lynda Kapalski  
Helen Kennedy  
Ella Kirby  
Clint Lilley  
Doug McCormick  
Audrey McDonald  
Clint Moss  
Sherry Overbeck  
Edith Patterson  
Myra Ponthier  
Don Pumphrey  
Joe Reine  
Casey Richert  
Suzanne Rigby  
Mike Rodgers  
Darlene Rutherford  
D. W. Rutherford  
Jeral Semien  
Wilma Shaw  
Sue Simon  
Jean Tinsley  
Mark Viguet  
Delores West  
Robby Zeringue  
Kerry Zimmerman

Employees who change residences or offices should fill out company mailing-address-forms (GSU0012-00-81) and return them to the mailroom in Edison Plaza. GSU publications, departmental mailings and other company information are not automatically forwarded; addresses must be corrected when employees move.



# GSU remembers Allen "Butch" Daniel

by Scott Harper

Allen "Butch" Daniel was a fun-loving person who loved his family and his job. These are the character traits that come through when Sabine Station employees Robert LaBeaux and Terry Richard reminisce about their late friend and coworker.

Daniel, 1st-class electrician, was injured in an explosion on Jan. 5 at Sabine Station along with Jeff Hollis, equipment operator; Larry Sam, 1st-class electrician; and the late Glenda Broussard. He unexpectedly passed away on July 22 at Hermann Hospital in Houston. Butch was 36 years old and a 10-year veteran of Gulf States.

Butch was happy to be working at Sabine Station. "He loved being here and was really excited when he came," says Robert LaBeaux, electrical foreman, who was Butch's foreman. "He came from the line department in Orange and was glad he didn't have to climb poles anymore."

Butch was the kind of employee who enjoyed the harder jobs. "Butch had a 'put me in coach' type of attitude at work," says LaBeaux.

"If something needed to be lifted, he would grab the heavy end," adds Terry Richard, 1st-class electrician. "That's the kind of guy he was."

Butch's fun-loving nature made work fun and easier for everyone. "He enjoyed

poking fun," says LaBeaux. "One of his favorite targets was Glenda (Broussard). They would pick at each other a lot."

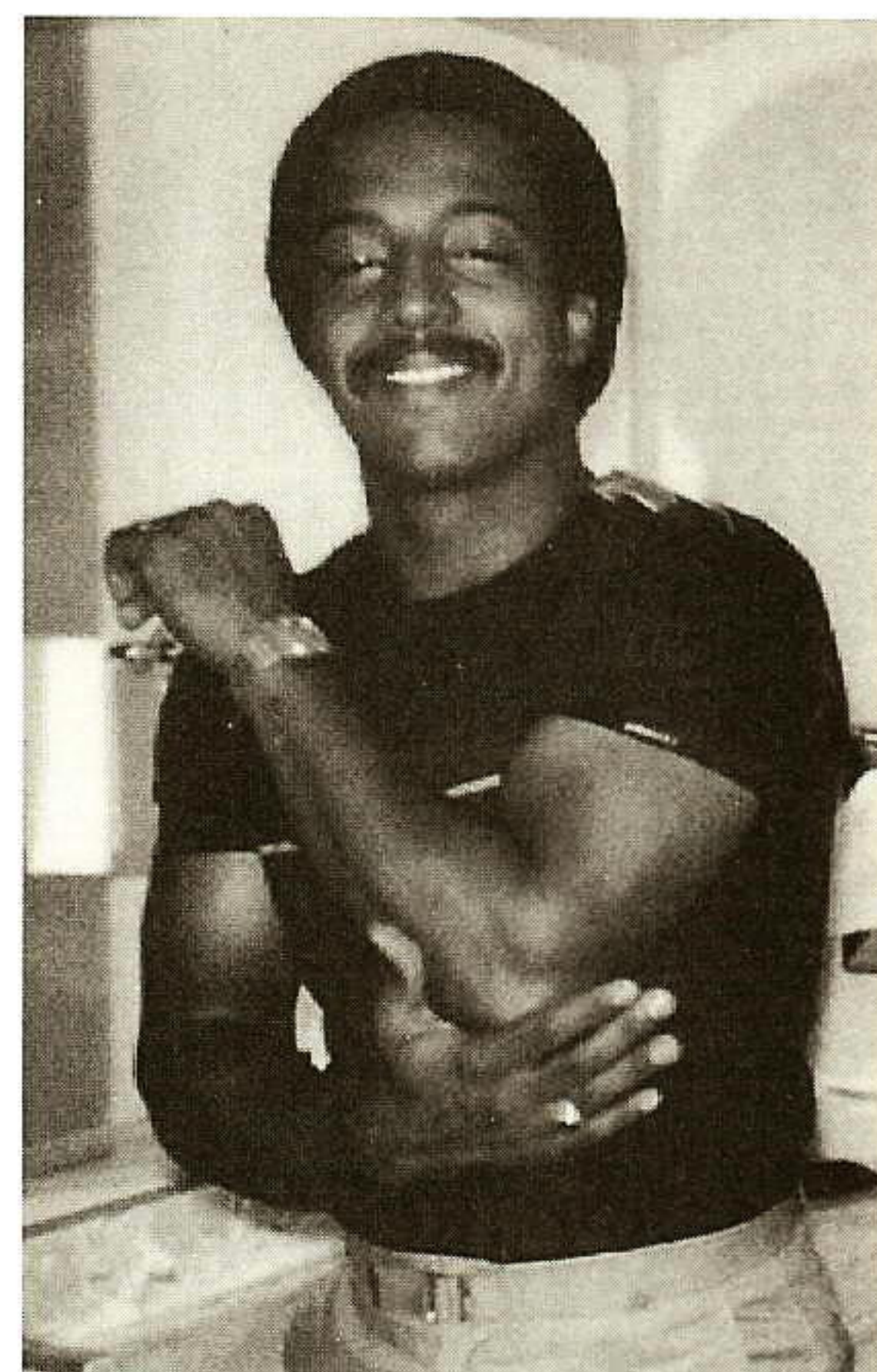
Butch had a saying he used that let coworkers know what he really thought. "When he said, 'Yeah, and I'm a jet pilot,' that meant he didn't believe a word you were saying," laughs LaBeaux.

Football season was a fun time for Butch. According to Richard, he was a big West Orange-Stark high school football fan. "Every Friday during football season, he would wear a West Orange-Stark football jersey just to agitate everyone," remembers Richard. "He would talk all week about how West Orange-Stark was going to win."

While Butch enjoyed high school football, his biggest hobby was automobiles. "Butch loved everything about cars, especially race car driving," says LaBeaux. "He always talked about cars." He enjoyed buying a used or beat-up vehicle, fixing it up and re-selling it.

Last November, he bought a Porsche and was very particular about when he would drive it. "He loved that car and would only take it out Sunday afternoons," says Richard. "He was frantic about keeping that car clean. He kept all his vehicles clean."

That meticulous trait carried over to his work at home in his yard. "He had a beautiful



*Allen "Butch" Daniel  
1957 - 1993*

home in Little Cypress," says Richard. "He did a lot of landscaping and it was always clean and tidy."

More than his job or automobiles, Butch loved his family. "He always wanted to be with them," says LaBeaux.

"The man had a love affair with his wife," says Richard with admiration. "He talked about her always. He was a devoted husband."

His children were constantly a topic of conversation. He always said he had good kids and was very proud of them. Butch's parents were also part of the family he so admired.

Remembering Butch, LaBeaux smiles and says he will miss his laughter the most. "He was a fun person to work with."

"I'll miss his joking and his wit," says Richard. "Butch was just a good guy. I'm going to miss him."

*Larry Sam and Jeff Hollis are both in rehabilitation treatment since being released from the Hermann Hospital Burn Center.*



# Meet the Entergy nuclear team

*When the merger between Gulf States Utilities and Entergy is complete, GSU's River Bend will become Entergy's fourth nuclear site, joining Arkansas Nuclear One, Grand Gulf and Waterford 3. Here is an introduction to Entergy's nuclear program.*

by  
Tom Dickson

There should be economic benefits when GSU's River Bend nuclear unit is operated as a sister unit to the four Entergy nuclear units. Arkansas Nuclear One Units 1 and 2, Grand Gulf Nuclear Station, and Waterford 3 Steam Electric Station have been operated by Entergy Operations for their owner companies (Arkansas Power & Light Co., System Energy Resources, and Louisiana Power & Light Co. -- all Entergy

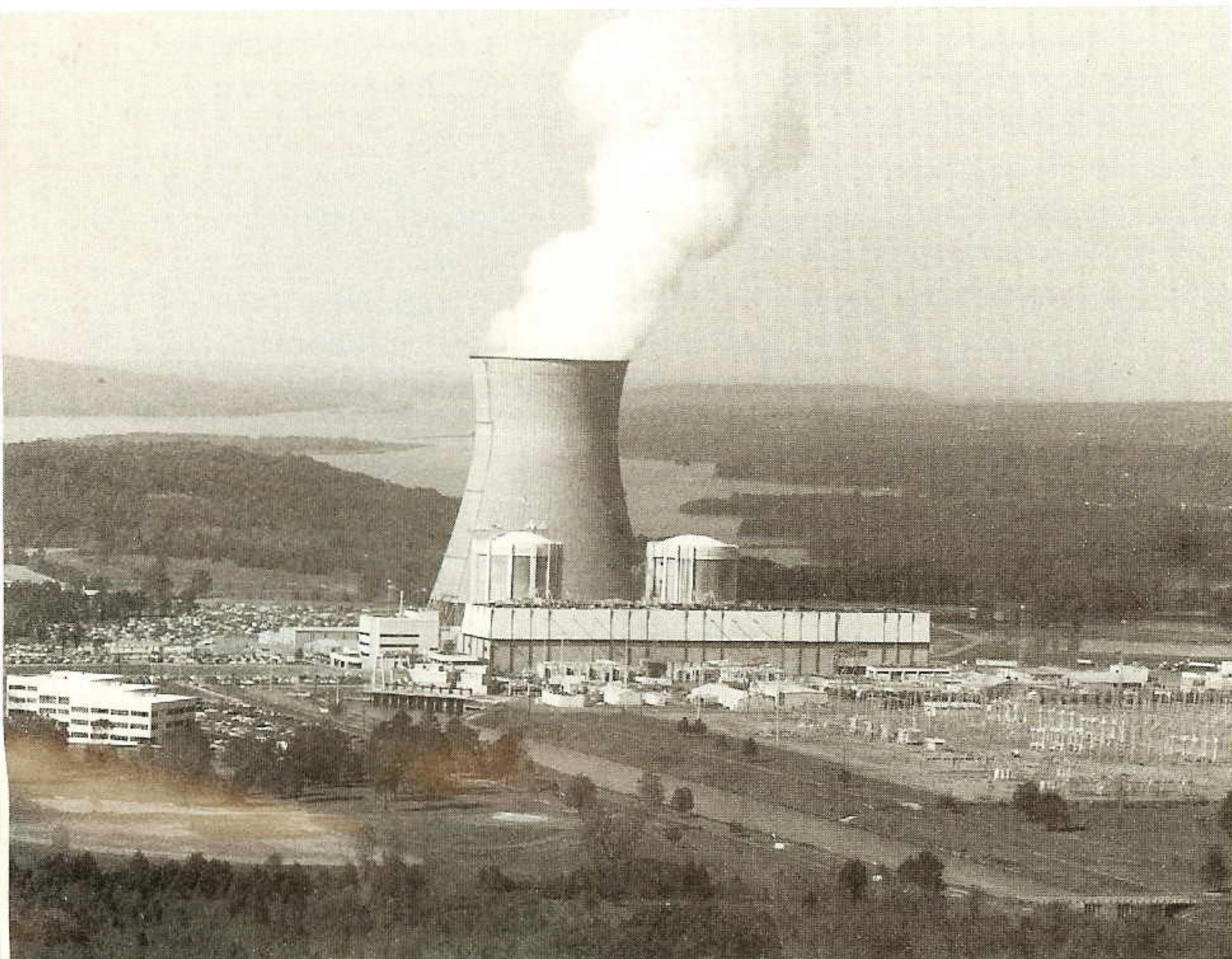
subsidiaries) since June 1990, and all have shown subsequent improvements in cost performance, operational performance, and regulatory performance.

Entergy Operations emphasizes balanced, continuous improvement in those three performance areas -- measured by cost per kilowatt-hour, capacity factor, and SALP ratings -- as the bedrock philosophy of its nuclear program, and the doctrine has shown positive results.

In the first full year of consolidated operation, the four units reported specific savings in excess of \$48.7 million in non-fuel operating and maintenance expenses, and when 1992 costs are reviewed by auditors this fall, the cumulative total is expected to reach \$60 million.

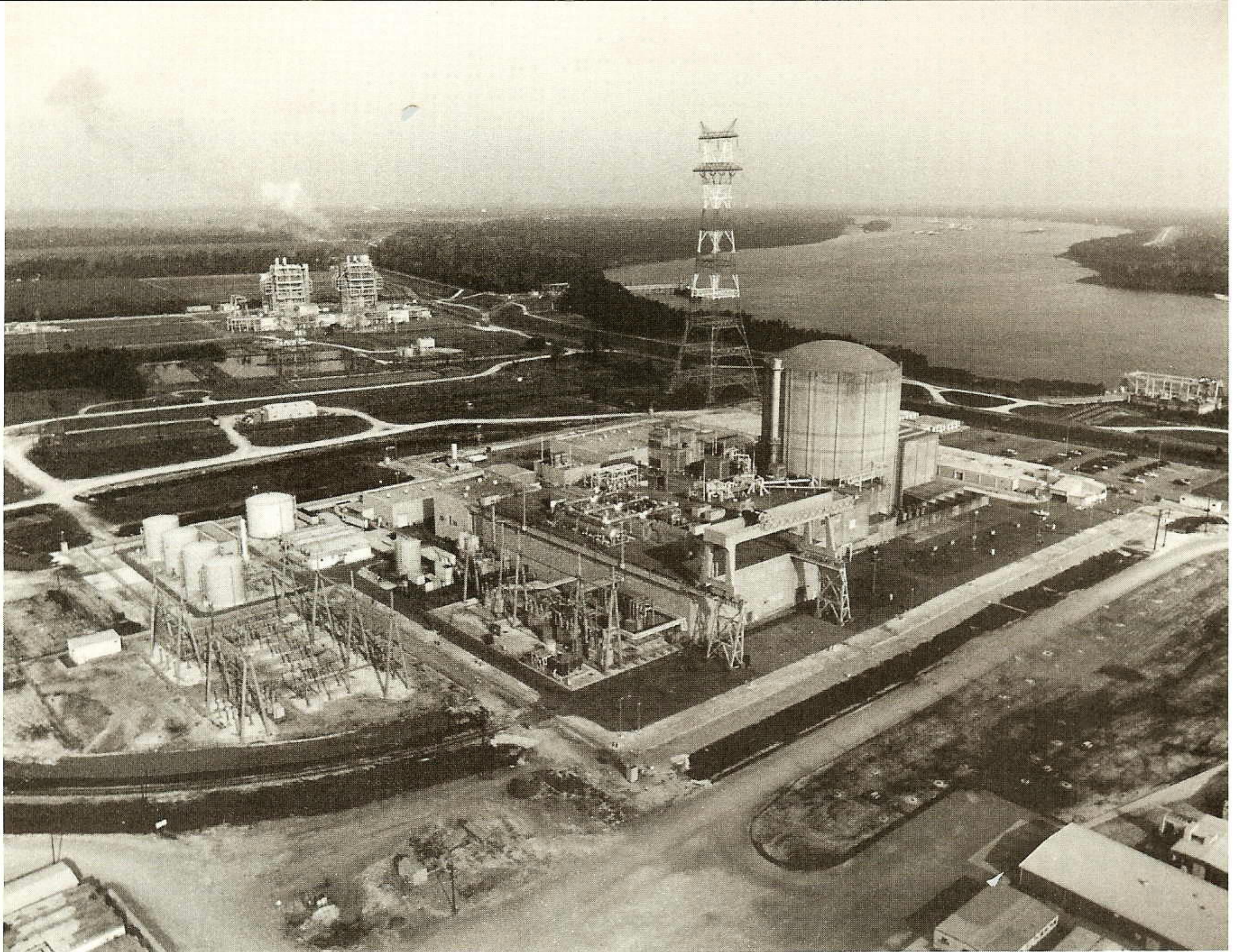
Like most nuclear units, the Entergy units are considered "base load" plants, and are run at 100 percent power whenever possible. Even though nuclear comprises 26 percent of Entergy's total capacity, in 1992 nuclear accounted for 47 percent of Entergy's generation.

The Entergy units range in age from 8 to 18 years from date of commercial operation. Located on the banks of Lake Dardanelle near Russellville, the two units of Arkansas Nuclear One are Entergy's oldest, having begun commercial operation in 1974 and 1980. Both Grand Gulf and Waterford 3 came on line in 1985. All Entergy units are pressurized water reactors except Grand Gulf, which is of similar design and construction as River Bend.



Arkansas Nuclear One





Waterford 3

Grand Gulf is situated on 2,300 acres of prime Whitetail Deer habitat near the Mississippi River about six miles northwest of Port Gibson between historic Vicksburg and Natchez. Grand Gulf began commercial operation in July 1985, about three months before

Waterford 3.

---

*River Bend will "fit nicely into the Entergy nuclear program, benefiting operations at River Bend and at the present-day Entergy units."*

**Donald Hintz**  
Entergy Operations CEO

---

One of the most respected US nuclear plants in terms of safe and efficient operation, Grand Gulf has continued to achieve high Systematic Assessment of Licensee Performance (SALP) ratings from the

Nuclear Regulatory Commission.

On June 29, Grand Gulf set a world record for continuous operation of a BWR-VI at 328 days of non-stop operation. Grand Gulf was recently added to the NRC's "good performer list" of plants with sustained high safety performance. Only four other plants in the nation are on

this list.

Waterford 3 is also a good performer. The 1075-megawatt PWR and its sister fossil units, Waterford 1 and 2, are located on west bank of the Mississippi River in St. Charles Parish about 25 miles upriver from New Orleans. The units are located on 3,600 acres that were once part of the Waterford Plantation. Waterford 3's capacity factor has ranked in the industry's top quartile since the 1988-1990 three-year period.

The Entergy plants and River Bend should benefit from the pending GSU/Entergy merger by sharing ideas and certain limited centralized functions.

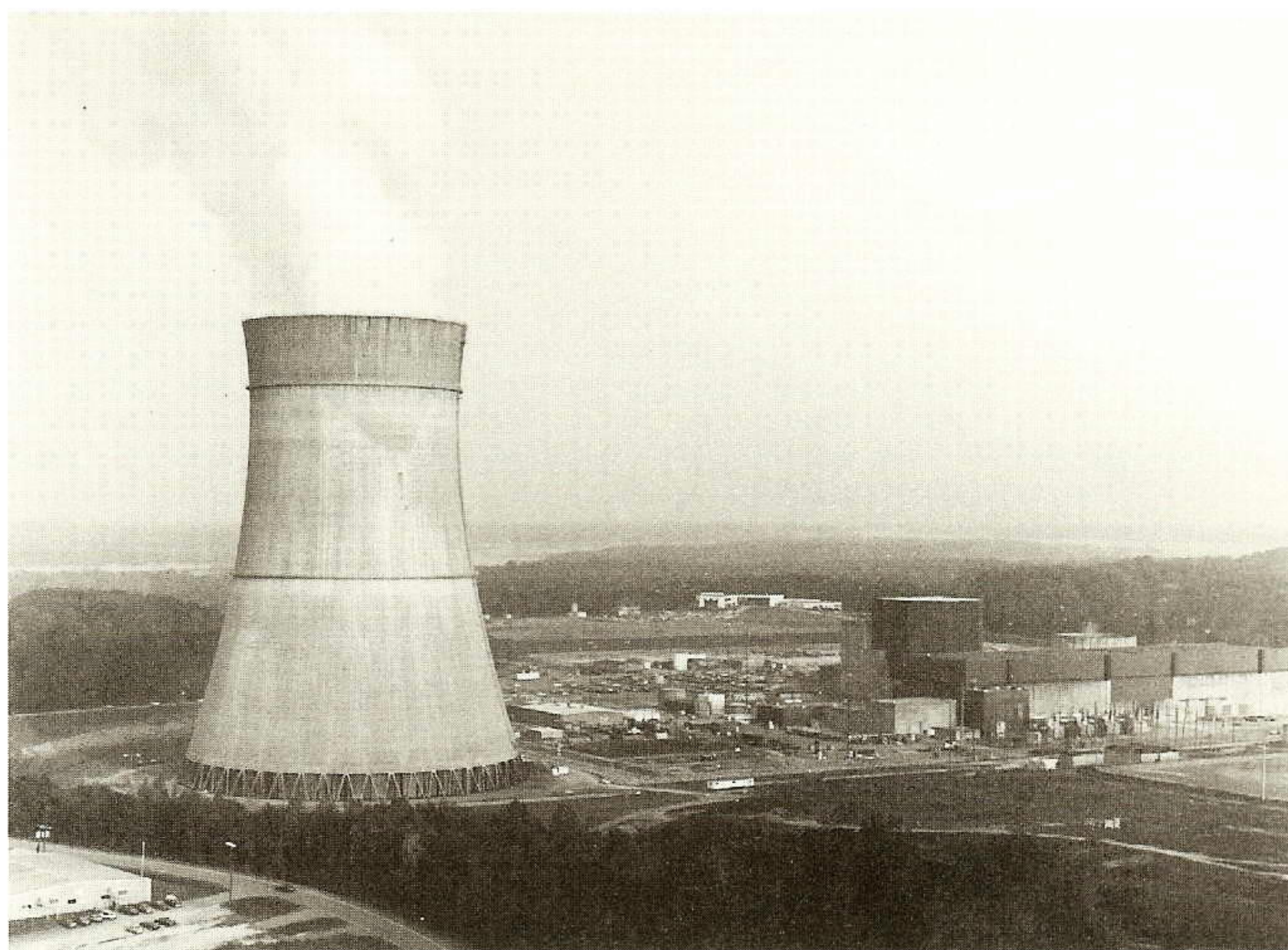
Entergy Operations has made exceptional progress toward its goal of becoming one of the premier nuclear organizations in the United States by taking advantage of the synergy in the Entergy units, exchanging best practices, sharing



nuclear plant and support-staff expertise, and by pursuing the economies of scale inherent in a large operation. River Bend should add to this formula for success following the merger.

Entergy Operations CEO Donald Hintz feels that River Bend will "fit nicely into the Entergy nuclear program, benefiting operations at River Bend and at the present-day Entergy units." Hintz defines "premier nuclear organization" as one whose plants rank in the top quartile of all United States nuclear plants in the previously mentioned performance areas of cost per kilowatt hour, capacity factor, and SALP ratings.

Because the Entergy units have shown steady improvement in these areas since consolidation, Hintz



*Grand Gulf*

expects to see improvements at River Bend following the GSU/Entergy merger and integration of River Bend into the Entergy nuclear program.

GSU and Entergy plan to consolidate River Bend into the Entergy nuclear fold by absorbing plant employees into Entergy Operations, which will manage and operate the plant for its owner, GSU. This was the method employed in consolidating the Entergy plants.

While economic benefits will accrue from the merger, Hintz expects any impact on River Bend staffing levels to be minimal.

### ENTERGY CORPORATION NUCLEAR PLANTS

Plant	Location	Net MWe	Type/Mfr/AE	Commercial operation
Arkansas Nuclear One - Unit 1	Russellville, Ark.	836	PWR/B&W/BECH	12/74
Arkansas Nuclear One - Unit 2	Russellville, Ark.	858	PWR/CE/BECH	3/80
Grand Gulf Nuclear Station*	Port Gibson, Miss.	1,143	BWR/GE/BECH	7/85
Waterford 3 Steam Electric Station	Taft, La.	1,075	PWR/CE/EBAS	9/85

#### Legend:

Net MWe = plant design electrical rating in megawatts

AE = Architect/Engineer

PWR = pressurized-water reactor

BWR = boiling-water reactor

B&W = Babcock & Wilcox

CE = Combustion Engineering

BECH = Bechtel

GE = General Electric

EBAS = Ebasco

\* Entergy subsidiary System Energy Resources, Inc. has 90 percent ownership and leasehold interest in Grand Gulf Nuclear Station. South Mississippi Electric Power Association has 10 percent ownership.



## Employees learn how GSU, Entergy to mesh

Employees at recent meetings conducted across the Gulf States system learned how the GSU and Entergy organizations will mesh once the merger is complete.

GSU and Entergy executives who lead the merger integration process conducted more than 20 meetings at power plants, service centers and other locations.

Following a formal presentation explaining how GSU's organization will fit into the Entergy Strategic Business Unit organization, the floor was opened for lengthy face-to-face question-and-answer sessions.

Representatives from Entergy's Human Resources group were available at each meeting to discuss specific Entergy policies.

Three kick-off meetings July 16 in GSU's Edison Plaza were conducted by GSU's Don Clements, vice president-strategic projects and leader of GSU's merger activities, and Entergy's Don Hunter, senior

vice president and leader of Entergy's GSU/Entergy transition team.

GSU's Calvin Hebert, senior vice president-division operations, and Entergy's Mike Bemis, executive vice president-transmission, distribution and customer service, conducted meetings for GSU's division personnel.

GSU's Jim Champagne, vice president-energy resources, Entergy's Frank Gallaher, senior vice president-fossil operations, and Entergy's Jim Rider, director-Southern Region plants, conducted meetings at GSU's fossil power plants.

GSU's Phil Graham, vice president-River Bend Nuclear Group, and Entergy's Harry Keiser, chief operating officer, Entergy Operations Inc., conducted meetings at River Bend Station.

GSU  
ENTERGY

UPDATE



*Mamie L. LeBlanc (middle) of Dunbar Elementary in Beaumont was one of 36 elementary, middle and high school counselors from Arkansas, Texas, Louisiana and Mississippi who recently completed the 7th annual Entergy Counselors' Institute at Mississippi College in Clinton. Pictured with LeBlanc are institute director Billy Folkes of Mississippi College (left) and Brenda Pounds (right) of Entergy. Counselors earned three hours of graduate credit for attending the intensive 10-day course, which provides information about the region that the counselors can use to encourage students to attend college and seek careers in the area.*



# Beaumont company shops at the education MALL

by Susan Gilley

Employees of American Valve & Hydrant Manufacturing Co. here began using the Mobile Automated Learning Laboratory on July 12. The sophisticated school-on-wheels was donated to Lamar University by Entergy Corporation this spring. By early August, American Valve & Hydrant employees were praising the MALL, following nearly a month of classes on the vehicle.

While the company has long offered its employees many educational opportunities, only a small percentage usually opted to participate in the voluntary training programs. Employee interest in educational programs increased earlier this year, however, when American Valve & Hydrant announced that its foundry operation would be phased out through the end of the year. Changing market conditions meant the company was better off purchasing some parts that it had previously manufactured for the fire hydrants and gate valves it produces here.

But the prospect of unemployment was not the only reason employees signed up for classes. Ricky Roy noted, "I enjoy using the computers in the MALL. I had no previous experience using a computer, and I'm learning to use it while upgrading my math and vocabulary skills." He continued, "I especially need more advanced use of fractions and decimals. The word usage will help me better express myself in writing and speaking."

For Floyd Jones, the need for a refresher course prompted him to enroll in the twice-weekly classes. "The math training is helping me to recall and learn math skills I will need as I look for a job after our foundry closes."

About 100 of the company's 270 employees will be laid off.

Many of those whose jobs will be eliminated are longtime employees, with 10 or more years of service. Because company officials wanted to do everything possible to ease their transition into the job market, the company signed up as the MALL's first industrial client. "This partnership between Lamar University and Entergy Corporation will enable our employees to be retrained while they're still working for us," commented Dalton Babineaux, American Valve & Hydrant vice president and chief operating officer.

Several employees are participating in the MALL program, which offers computer-based learning to two groups of employees two days each week. The company allows workers to spend the last hour of the outgoing shift or the first hour of the oncoming shift in the MALL, which parks at the plant's main gate. Students are assisted by Scott Duliere, MALL coordinator.

Babineaux said his company appreciates the hard work and loyalty of all American Valve & Hydrant employees. "It's an unfortunate reality of modern business life that we face competition on many levels. In this case, it has become cheaper for us to purchase some parts for our products rather than manufacture them ourselves." He said the MALL's arrival in Southeast Texas was timely because it coincided with a period "when our employees needed it most. They'll be entering a job market that is vastly different from the one that existed when they began work here."

The MALL is equipped with 11 personal computers that offer training in hundreds of areas, ranging from basic reading and math skills to spread-sheet and word-processing tutorials. A 32-foot motor coach, the \$160,000 MALL is the fourth such vehicle donated by Entergy. The others operate in Louisiana, Mississippi and Arkansas. Services offered through the MALL are free of charge to companies and organizations that participate in the program. About a half-dozen Southeast Texas companies and agencies have already signed up for the program, according to Duliere.



Virginia Hurley (right) of American Valve & Hydrant signs up workers for the first day of classes aboard the Mobile Automated Learning Laboratory.



# Street speaks at Edison Museum in Canada

by Jill Street

A Canadian couple's visit to the Edison Plaza Museum in January started me on a journey to the June ribbon-cutting ceremonies for the only known Thomas Edison Museum in Canada.

As one of the featured speakers at the "Thomas Edison Day in Vienna," Ontario, I spoke on behalf of Mr. and Mrs. Robert C. Halgrim of Fort Meyers, Fla. He was Edison's protege, his personal assistant and the first manger of the Edison Winter Home. The Halgrims were unable to attend the ceremonies.

My trip to Canada, paid for by the Canadian museum, began when Mr. and Mrs. Grant Young of London, Ontario, mentioned that Edison had a Canadian connection: Edison's mother, Nancy Elliot, taught in Vienna's two-room schoolhouse. She married Samuel Edison Jr. in 1828 and they had four children before moving to Ohio where Thomas Edison was born in 1847.

Jerry Seghers, a member of the museum board, served as my official host.

While the Edison homestead was moved by Henry Ford to exhibit at Greenfield Village in Dearborn, Mich., in 1933, a house that remained on the property was turned into the museum. The museum artifacts were donated by the last descendant of the Edison family who died in Vienna in



*Street, flanked by Mr. & Mrs. Grant Young of London, Ontario, learned about the Edison-Vienna connection when the Youngs visited the Edison Plaza Museum last January.*

the early 1990s. Thomas Edison returned to Vienna many times to visit his grandparents.

Attending the June 19 ceremonies were a number of local Canadian officials. Congratulations poured in from the Edison Birthplace Museum in Ohio and the Henry Ford Museum in Michigan. But the Edison Plaza Museum in Beaumont, Texas, was the only Edisonian museum to have a representative actually present. Ed Orbann, retired assistant to Charles Edison, Thomas' oldest son, was also there. He and the inventor's late children, Charles and Madeline, helped the dream of a Vienna museum grow into a reality.

I took with me to Canada various materials about our museum, including the videotape of my interview with Mr. Halgrim. The Canadians asked my permission to use part of this tape in a video they are making about their own museum. I considered this request quite a compliment for the Edison Plaza Museum.

I also took a Texas flag which is now flying in Ontario and I returned with a Maple Leaf flag of Canada.

## Edison Plaza Museum Facts

- More than 8,500 people have visited the Edison Plaza Museum during its 10-year's existence.
- Roughly, half the visitors have been senior citizens, with the other half a mixture of students and adults.
- To date, we have 1,964 artifacts on record. Not all are displayed at the same time.
- Contributions to the museum have come from Kerr-McGee, Pennsylvania Power & Light, Reddy Communications, EPRI, the MIT Museum, the American Foundation for the Blind, Los Alamos National Laboratory, the Library of Congress, the Nautilus Memorial Submarine Force Museum in Connecticut, the New York Times, to name just some.
- The Edison Plaza Museum has been included in 10 books and 10 magazines

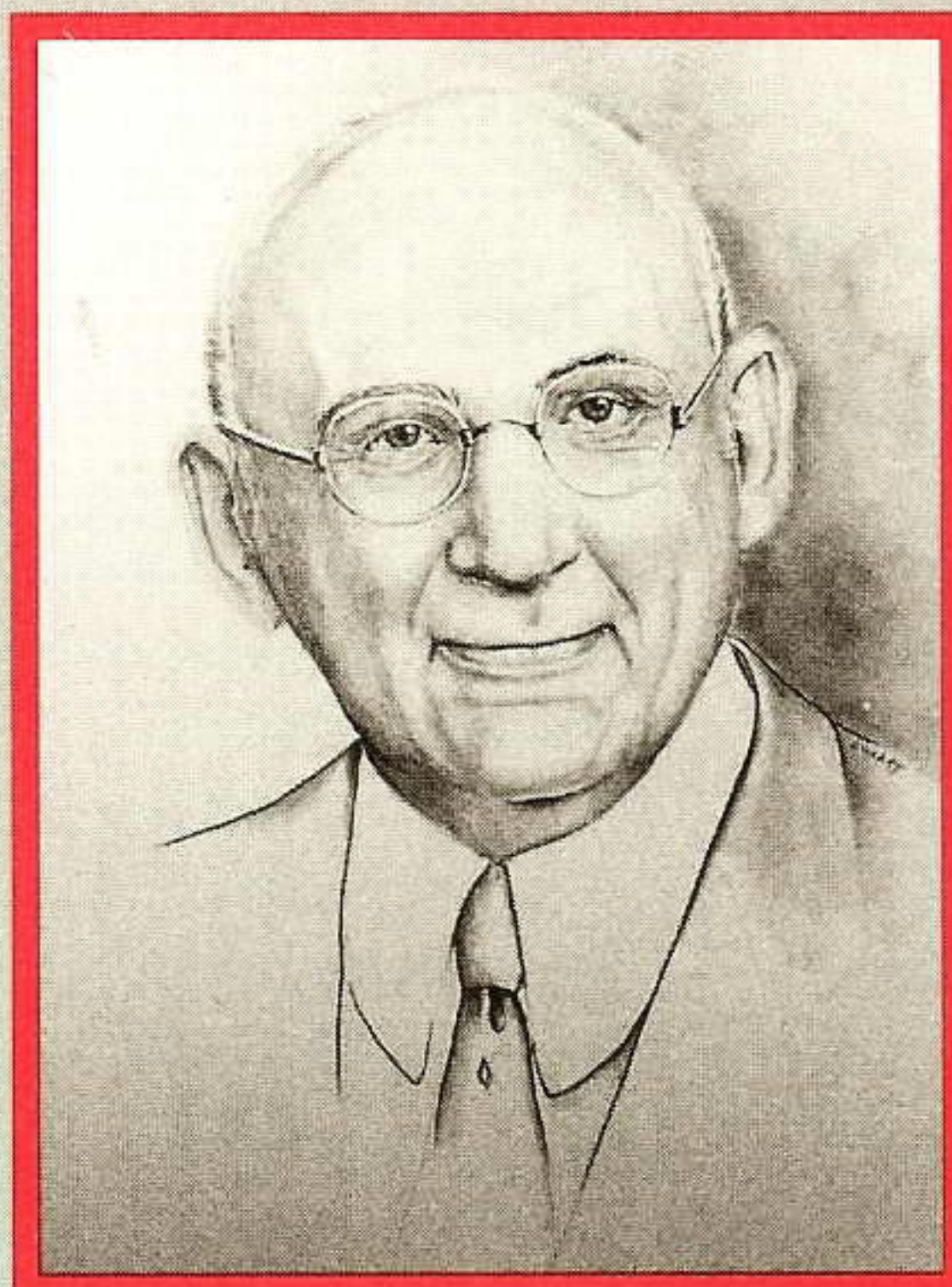


# The GSU Gallery of Leaders

*Since GSU's incorporation in 1925, fourteen executives have led the company in its successful mission to provide reliable electric service throughout Southeast Texas and Southwest Louisiana. Graphics Representative Linka Peveto recently created portraits of these GSU leaders, which now are displayed near the board room on the 17th floor of Edison Plaza. Portrait photos by Henry Joyner.*



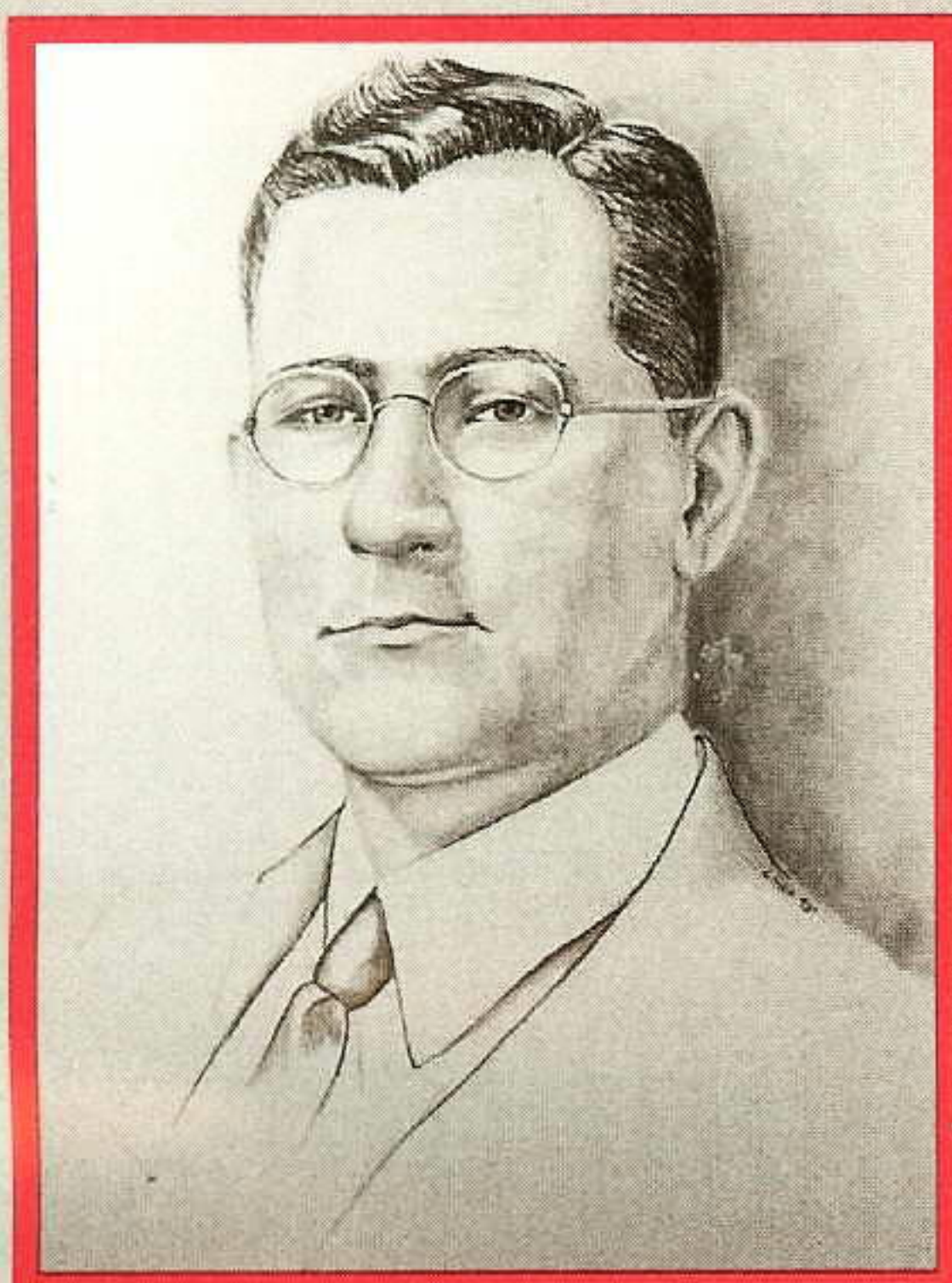
**Palmer Hutcheson**  
President 1925



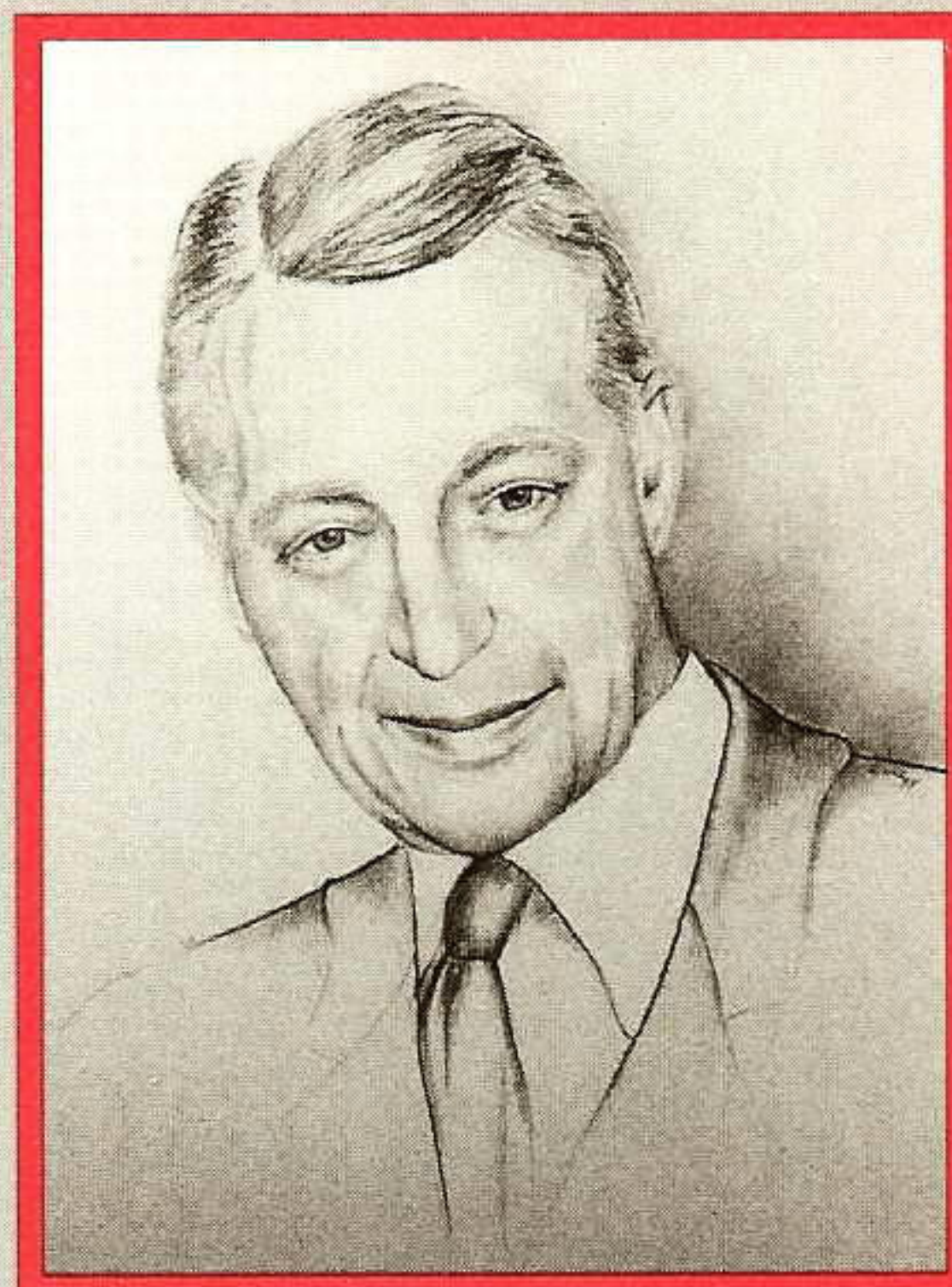
**Charles F. W. Wetterer**  
President 1925-27



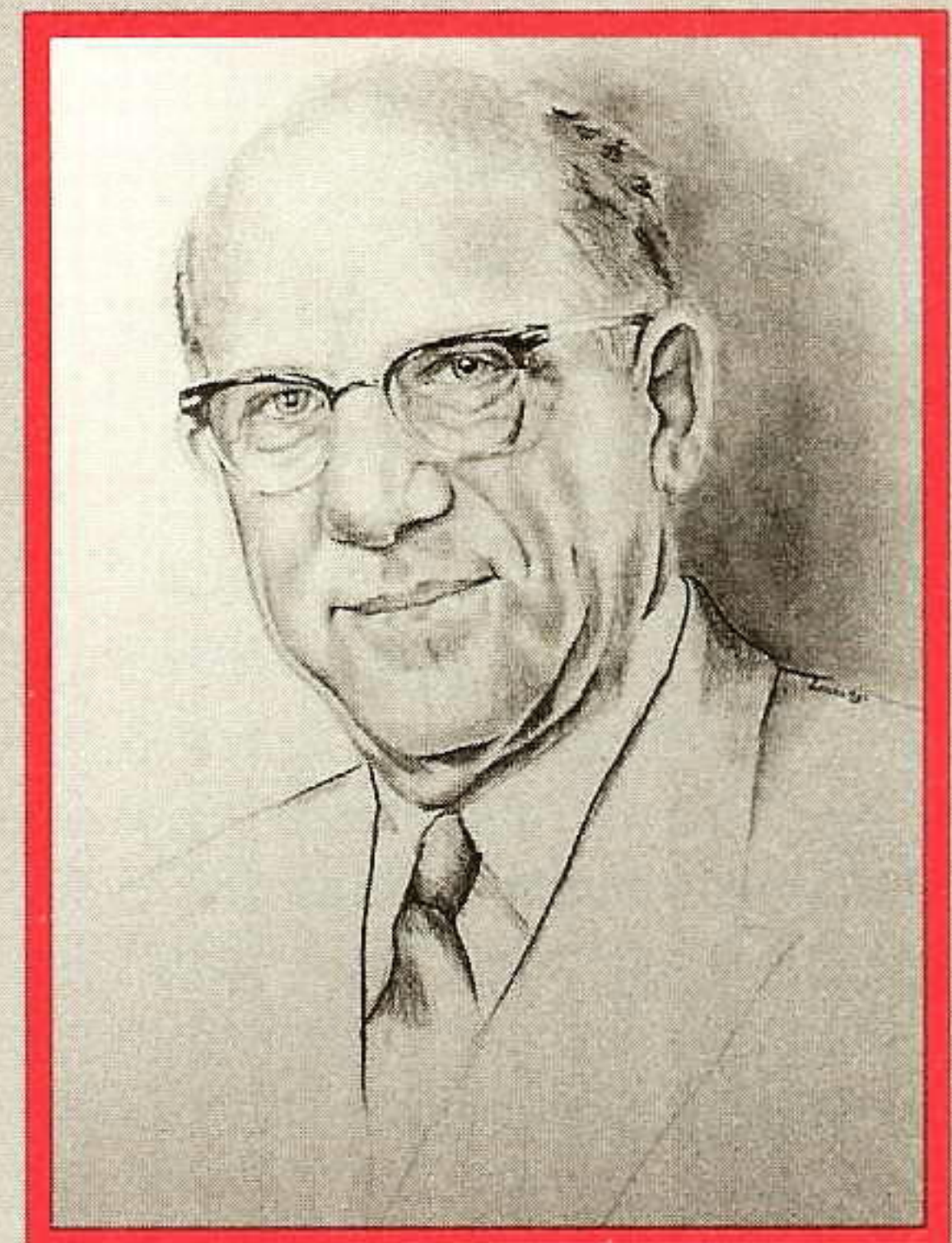
**George H. Clifford**  
President 1927-30



**Tom P. Walker**  
President 1930-38, 40-42



**Thomas J. Hanlon**  
President 1938-40  
Chief Executive Officer 1947-54

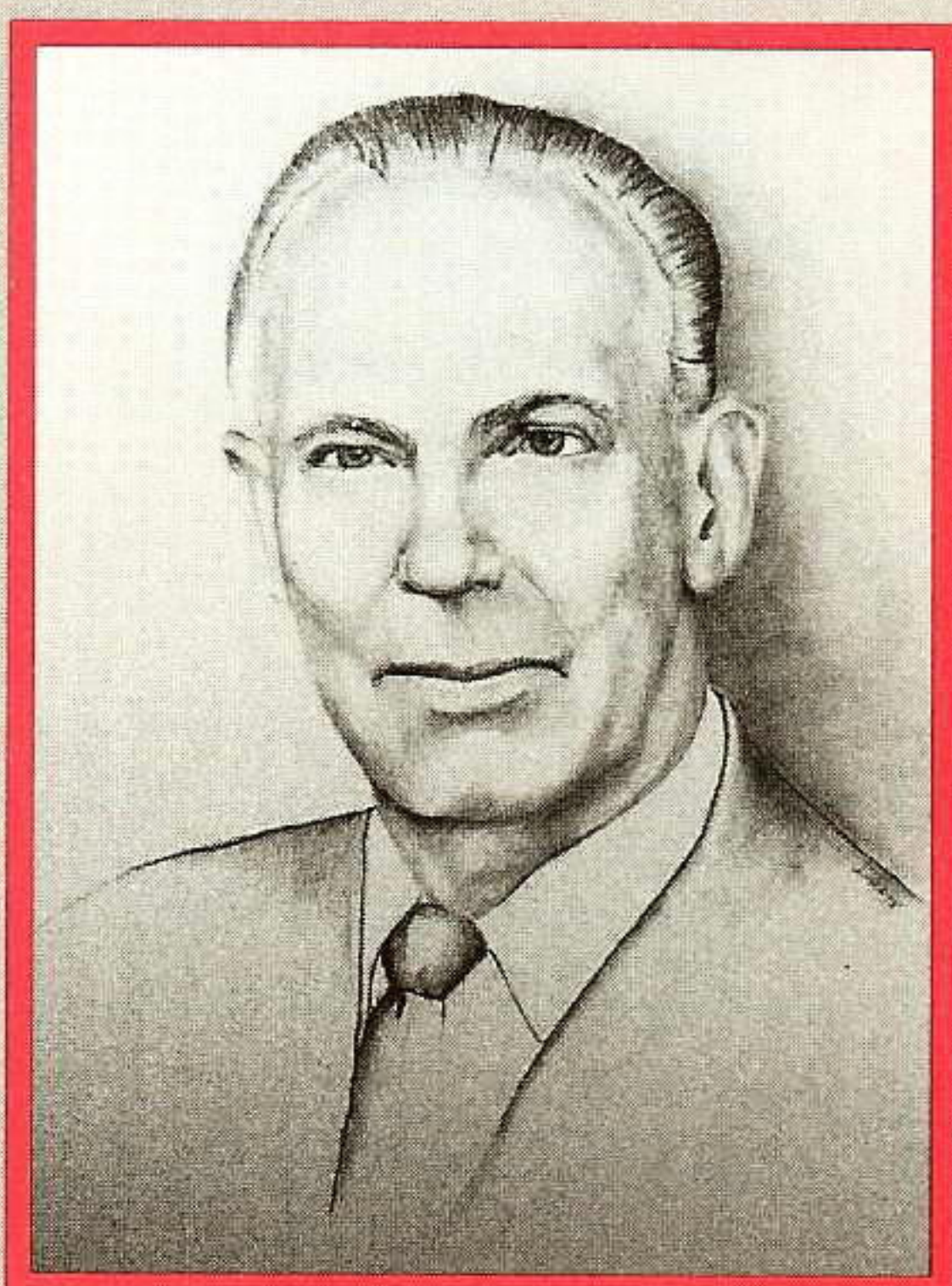


**Roy S. Nelson**  
President 1942-47  
Chief Executive Officer 1954-61





**John J. Morrison**  
*Chief Executive Officer 1961-66*



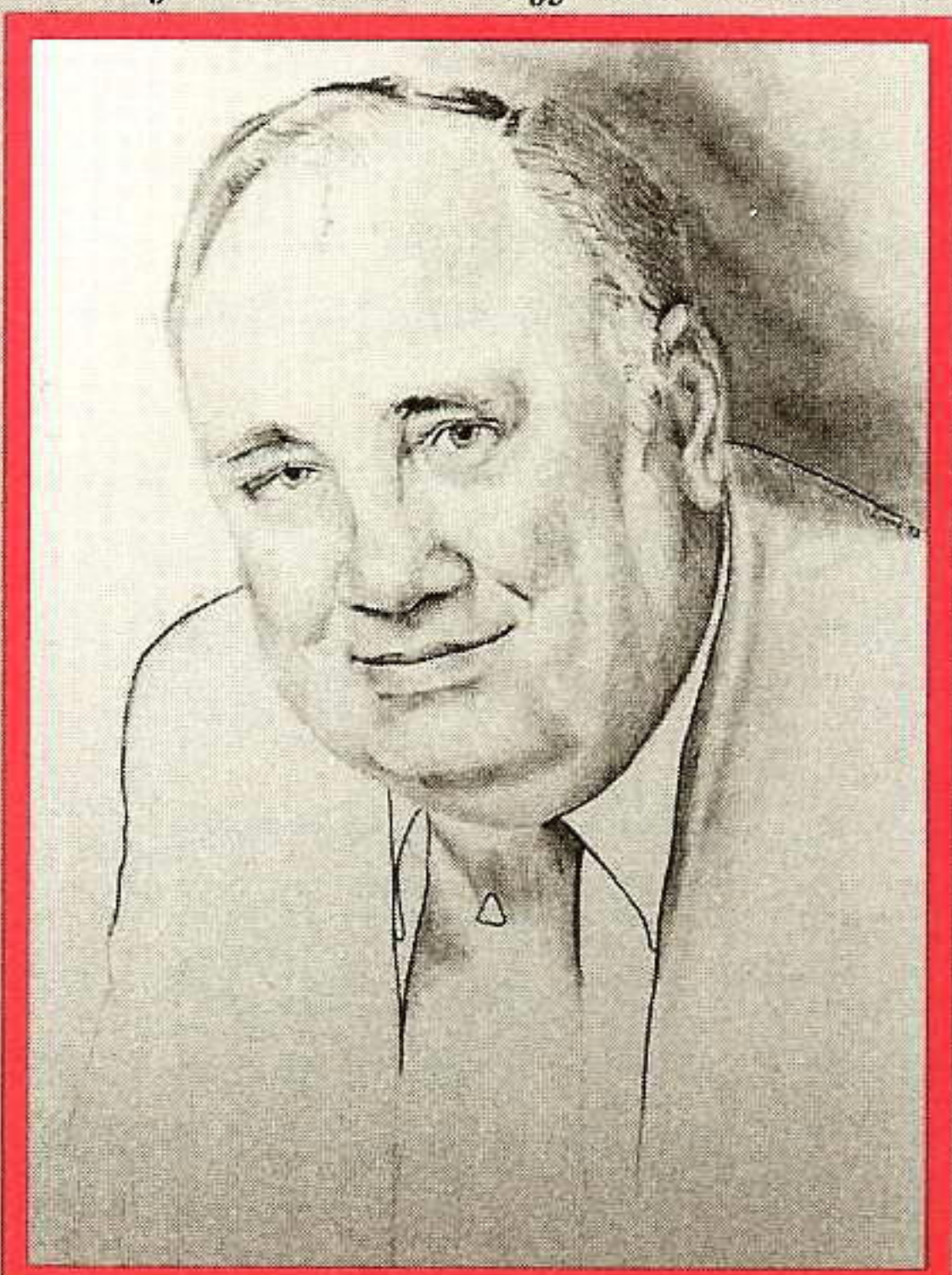
**Glenn E. Richard**  
*Chief Executive Officer 1966-70*



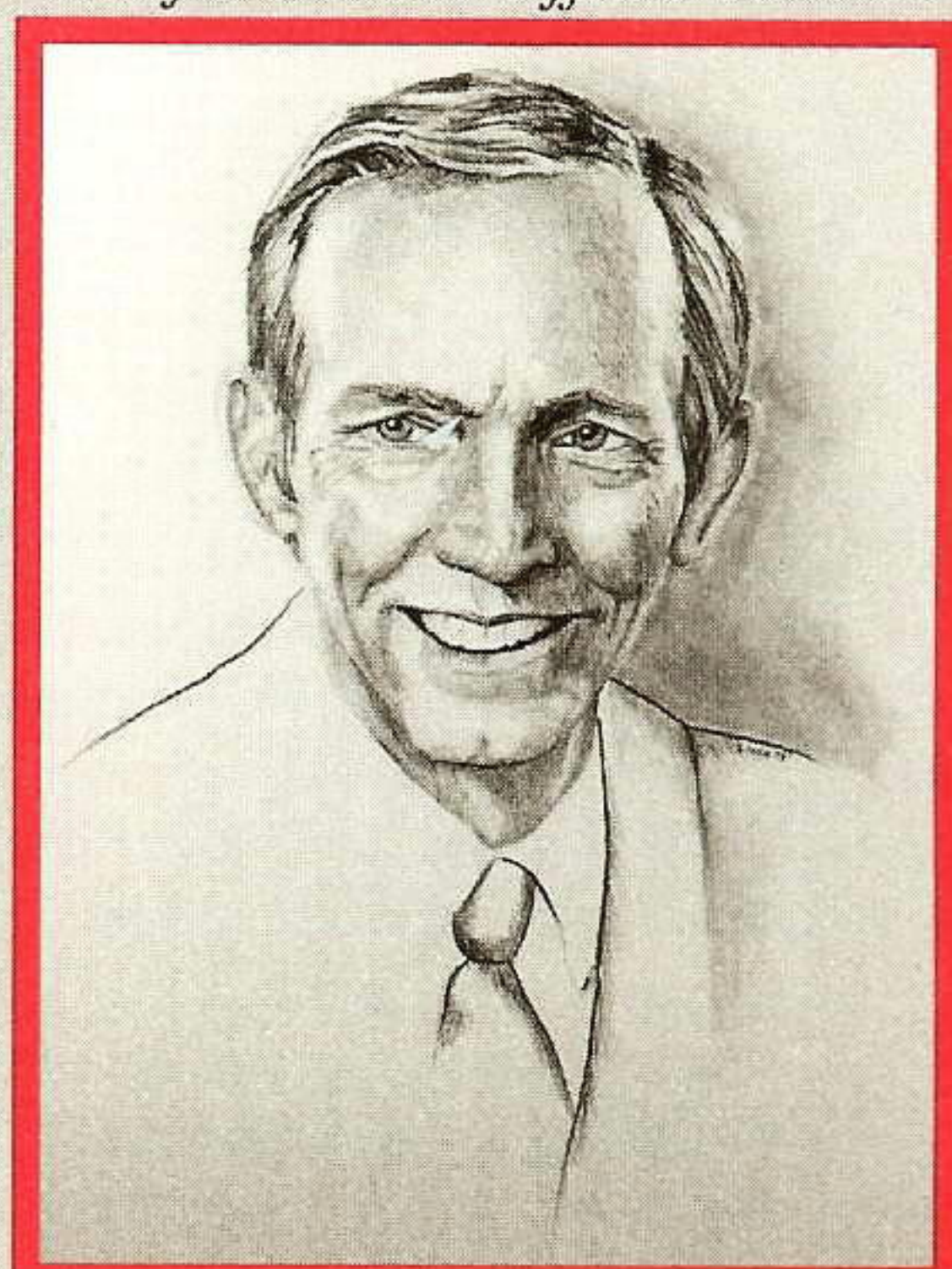
**Floyd R. Smith**  
*Chief Executive Officer 1970-78*



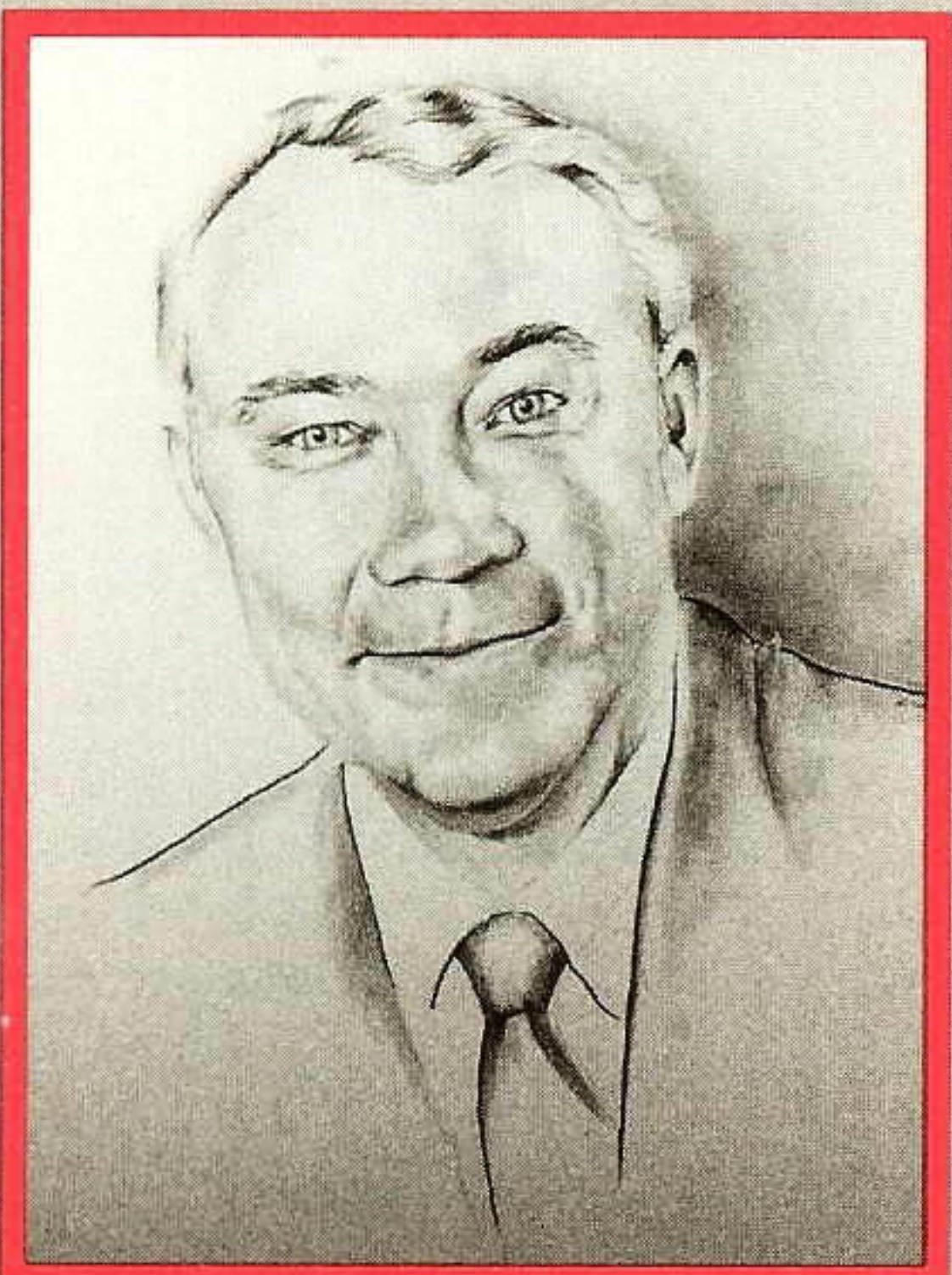
**W. Donham Crawford**  
*Chief Executive Officer 1978-81*



**Norman R. Lee**  
*Acting CEO 1981-82*



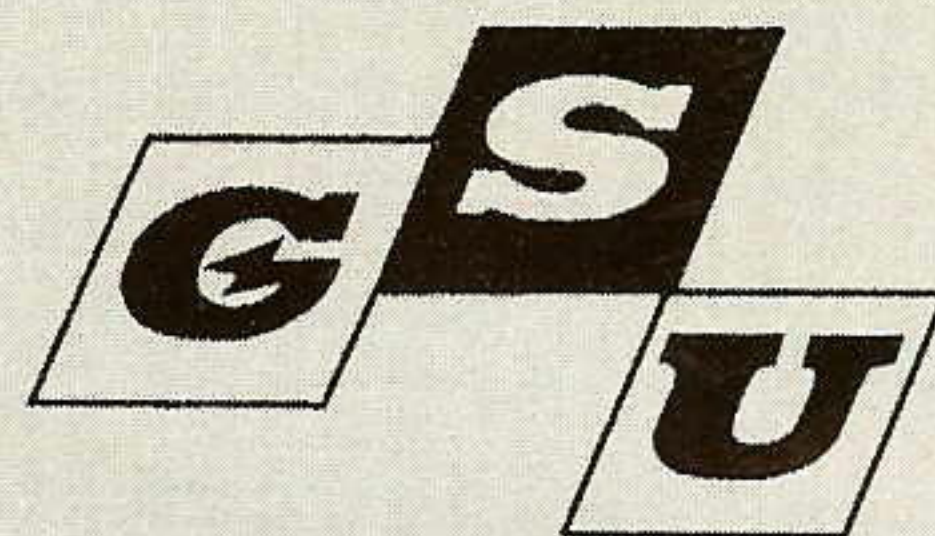
**Paul W. Murrill**  
*Chief Executive Officer 1982-86*



**E. Linn Draper**  
*Chief Executive Officer 1986-91*

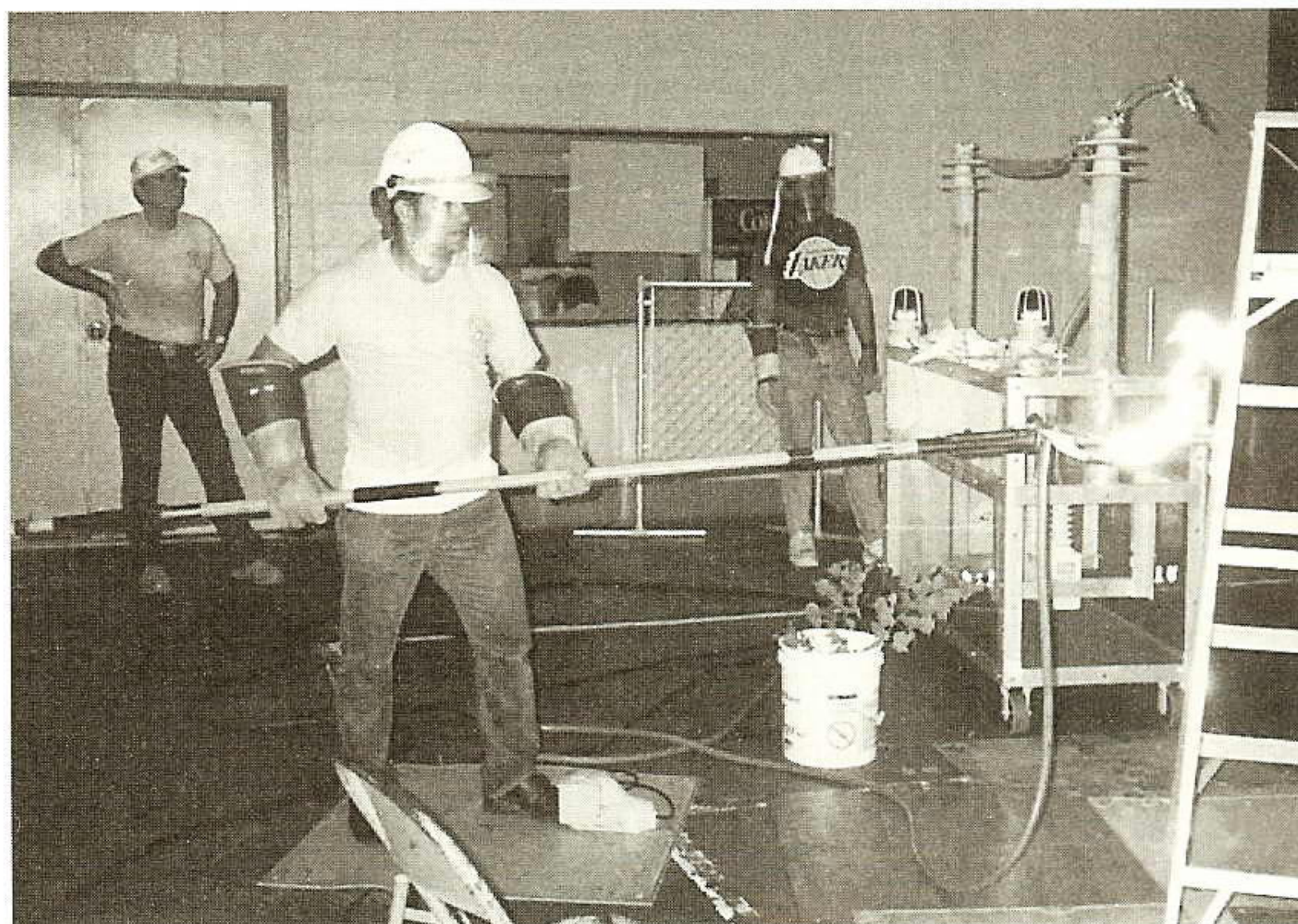


**Joseph L. Donnelly**  
*Chief Executive Officer 1992-*





# Lake Charles safety committee builds an arc



Safety task force member Gene Mouton draws an electrical arc during a safety program as Bill Tholburn (l) and Ken Chapman (r) look on from a safe distance.

story and photos by Becky Watson

Lake Charles Division personnel put on safety gear to draw an electrical arc at 7,620 volts, while asking the audience to imagine an arc at a much higher voltage of 69,000 or 138,000 volts.

The recently completed arc demonstrator has been a long-time dream of senior T&D specialists. "This is a great way to show people what can happen when they come in contact with an energized line or circuit," says Bill Tholburn, senior T&D safety specialist, Lake Charles.

Glynn Beck, technical foreman, designed and Joey Addison, utility man, built the demonstrator which is traveling around Lake Charles Division teaching electrical safety to children and adults.

The program begins with a safety video which grabs the audience's attention. After that, the demonstration features one of the presenters drawing an electrical arc. The program demonstrates several electrical hazards one might face in everyday life. From trees, kites, TV antennas and metal ladders near power lines, to downed lines on fences and automobiles, or conductors lying in ditches and flooded streets. Workers using equipment such as cranes near

overhead power lines are also cautioned.

The message, "water and electricity don't mix," is very evident. Examples such as swimming pool cleaning equipment, sail boat masts and appliances, especially hairdryers, are discussed.

Personal protective equipment is worn and displayed by GSU personnel. Properly tested and

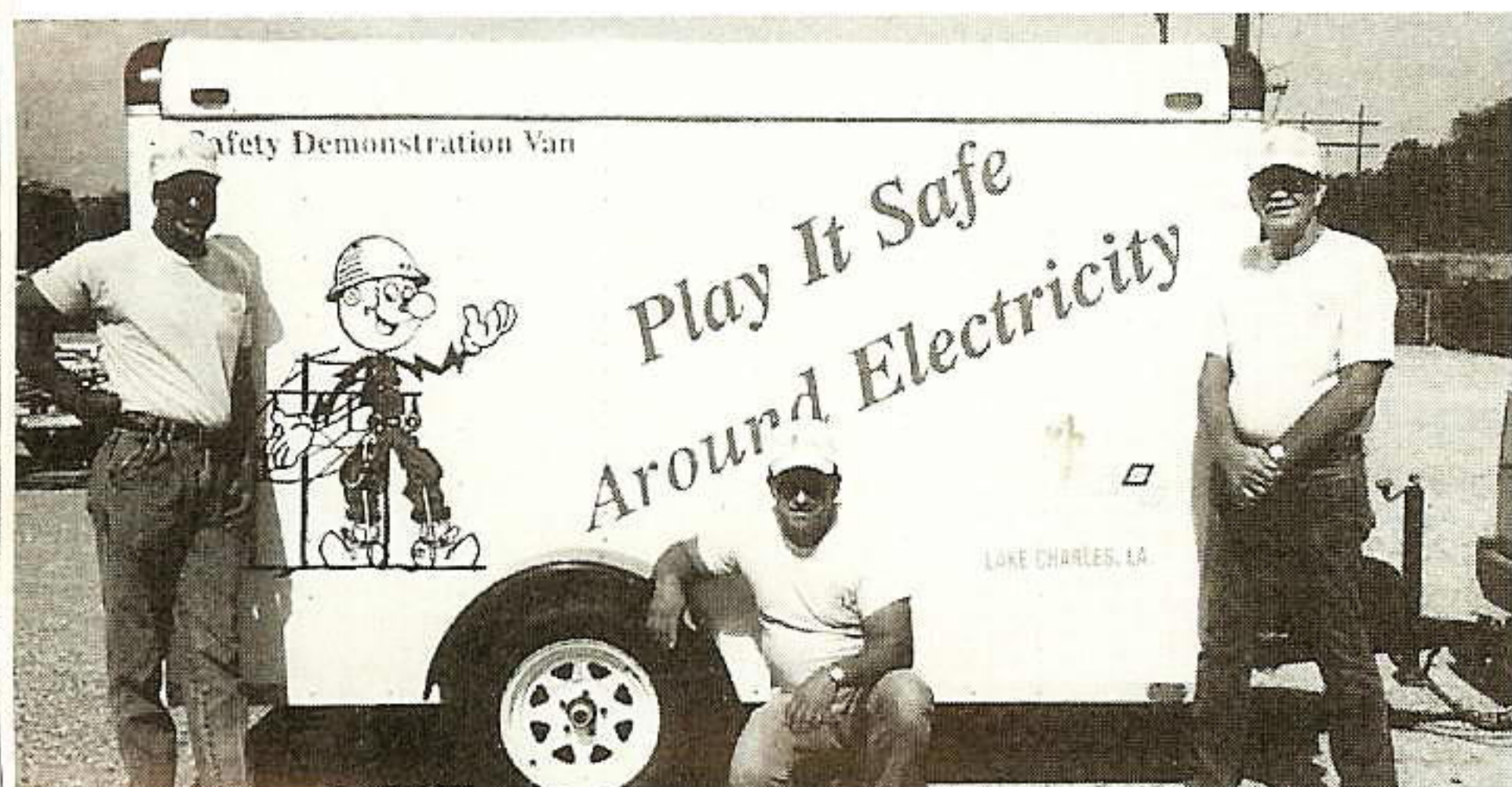
cared for rubber gloves are the most valuable piece of equipment our employees have to protect them when contact is made.

The presentation also includes a demonstration on how a properly tested glove gives protection from an electric shock verses a rubber glove that has been nicked or cut. Further demonstrated is the difference between a household playtex glove and a lineman's rubber glove.

Following the program, safety literature and activity booklets are left with the audiences. Miniature line hoses are given to the children so they can have an understanding of how rubber insulators keep GSU personnel safe while working on power lines.

The electrical safety program is a team effort involving the division safety task force, T&D specialists, claims representatives and customer services. Task force members are Ken Chapman, Gregg Lanthier and Gene Mouton from Lake Charles; Sulphur's Tom Nolen; Willie Miller from Jennings; and Lanard Meche and Bryan Meche from the Acadiana District.

The arc demonstration program targets adults as well as children and is used in safety and health fairs, industrial, city and law enforcement safety programs and adult and school programs. In one two week period, the program was conducted five times reaching over 1,250 adults and children.



The arc demonstrator travels in a specially made trailer. Ready for another program are (L to R) Ken Chapman, Gene Mouton and Bill Tholburn.



# Glass, Worthy retirement a milestone

by Mike Rodgers

This fall, Charlie Glass and Jack Worthy, two Gulf States executives with very different backgrounds will retire, taking with them much experience and many memories of the challenges and friendships made over the decades.

Glass, vice president-operations, retires in September. He joined GSU 44 years ago in sales, assigned to promote the use of electricity in rural areas. Following a stint in the Air Force, Glass returned to the company and spent all but six years of his career in division operations, much of it involving sales of electricity. He rose steadily, becoming vice president-marketing in 1975. In the mid-'80s, he was promoted to his current executive position.

Looking back on a career that began in 1949, Glass says his best memories involve GSUsers. "My experience with GSU employees was interesting and rewarding," he says. Particularly impressive to Glass is the way employees respond to emergencies such as major storms. "It's a team effort, almost like a war. Over the years I saw so much commitment and sacrifice." Glass

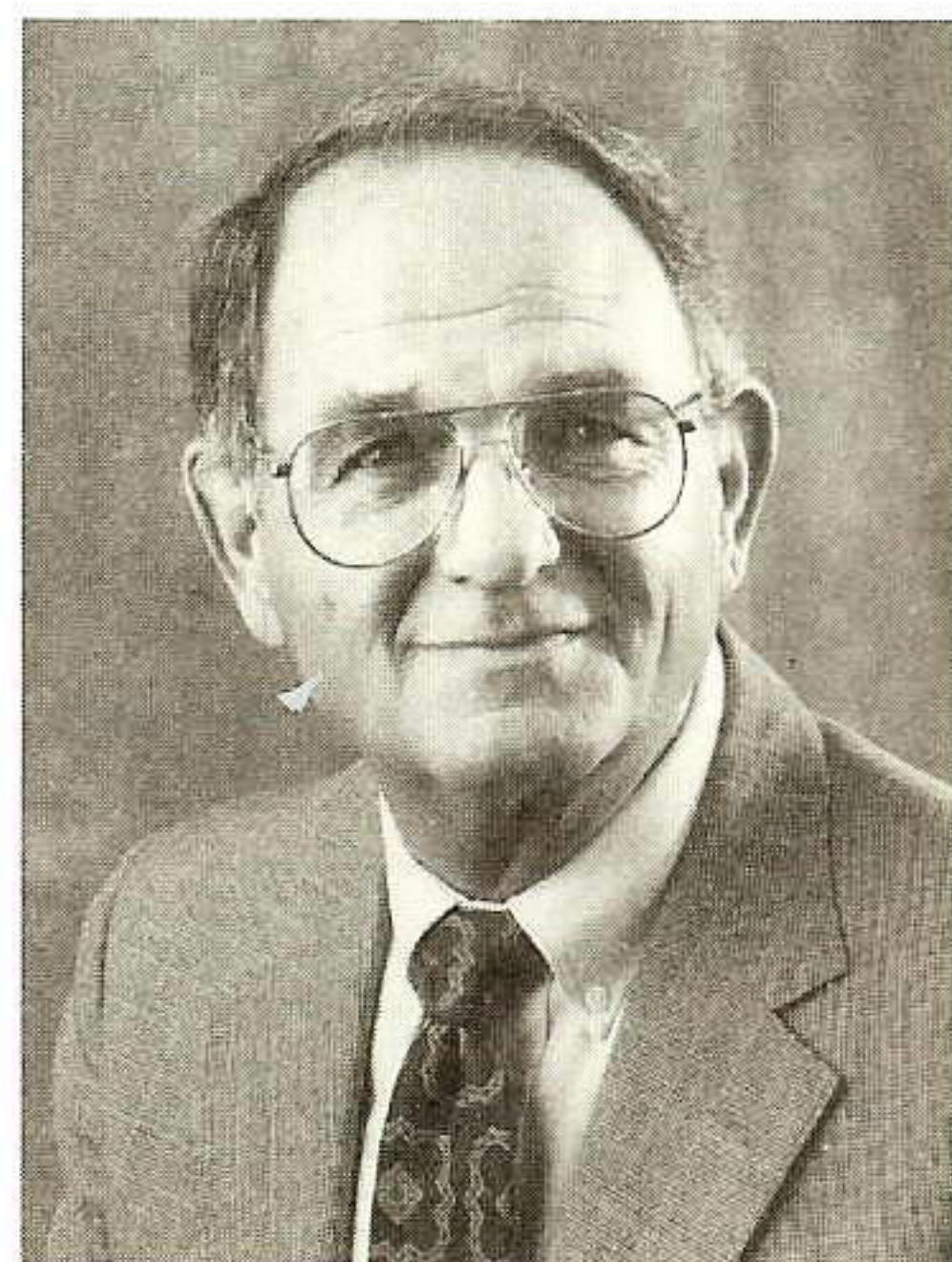


Glass

also noted that during the hard economic times of the late 1980s, people pulled together to do more work with fewer resources. "I feel genuinely proud to have been a part of the team," he says. Glass' retirement plans include traveling, fishing and playing golf with friends.

Edison Plaza is often called "The House That Jack Built." Jack, in this case, is Jack Worthy, vice president-general services. Worthy came to GSU in 1956 with a background in journalism. That educational experience led to

his assignment as assistant advertising director in Baton Rouge. Like Glass, Worthy spent the bulk of his early career in the divisions. At various times he was manager of gas operations, company lobbyist in Baton Rouge and Washington D.C., organizer of the Public Affairs Department and editor of one issue of **Plain Talks**. "I have been privileged to have had a wide range of experience in my time with GSU," he notes with satisfaction.



Worthy

At the request of then-CEO Don Crawford, Worthy moved to Beaumont in 1979 to be the executive in charge of the construction of GSU's new corporate headquarters building, now known as Edison Plaza. "It was terrible before Edison Plaza was built. We were scattered in six different buildings around downtown Beaumont and very cramped for space." Worthy is glad to recall that the move into the new building was very smooth.

Worthy emphasizes that he is a person who works to relax. He plans to work with Empower America, a citizens group aimed at improving how government works. "I want to be a part of it, but I don't want to get involved in politics," he stresses.

Both Glass and Worthy enjoyed the challenges they faced in the late 1950s and 1960s, when GSU was in a political battle with Rural Electrification Administration electric cooperatives which sought to move into the GSU service area. Both were impressed with the integrity of GSU. "The welfare of our customers always came first," says Glass.



# View From A Lineman's Eyes

by David Stott, lineman-1st class, Silsbee

*It's 1 a.m. and he's awakened by thunder,  
There's a storm in the northern sky.  
You see, it won't be long  
Till the phone goes to singing,  
That's the view from a lineman's eyes.*

*With his climbing boots on  
And the last lace made,  
He turns to tell her goodbye.  
She says, "Please be careful,  
And please work safely,"  
That's the view from a lineman's eyes.*

*Up the pole he's a wood chip,  
With a dangerous job  
That most men won't even try.  
But the Good Lord has blessed him  
With the talent to do it,  
That's the view from a lineman's eyes.*

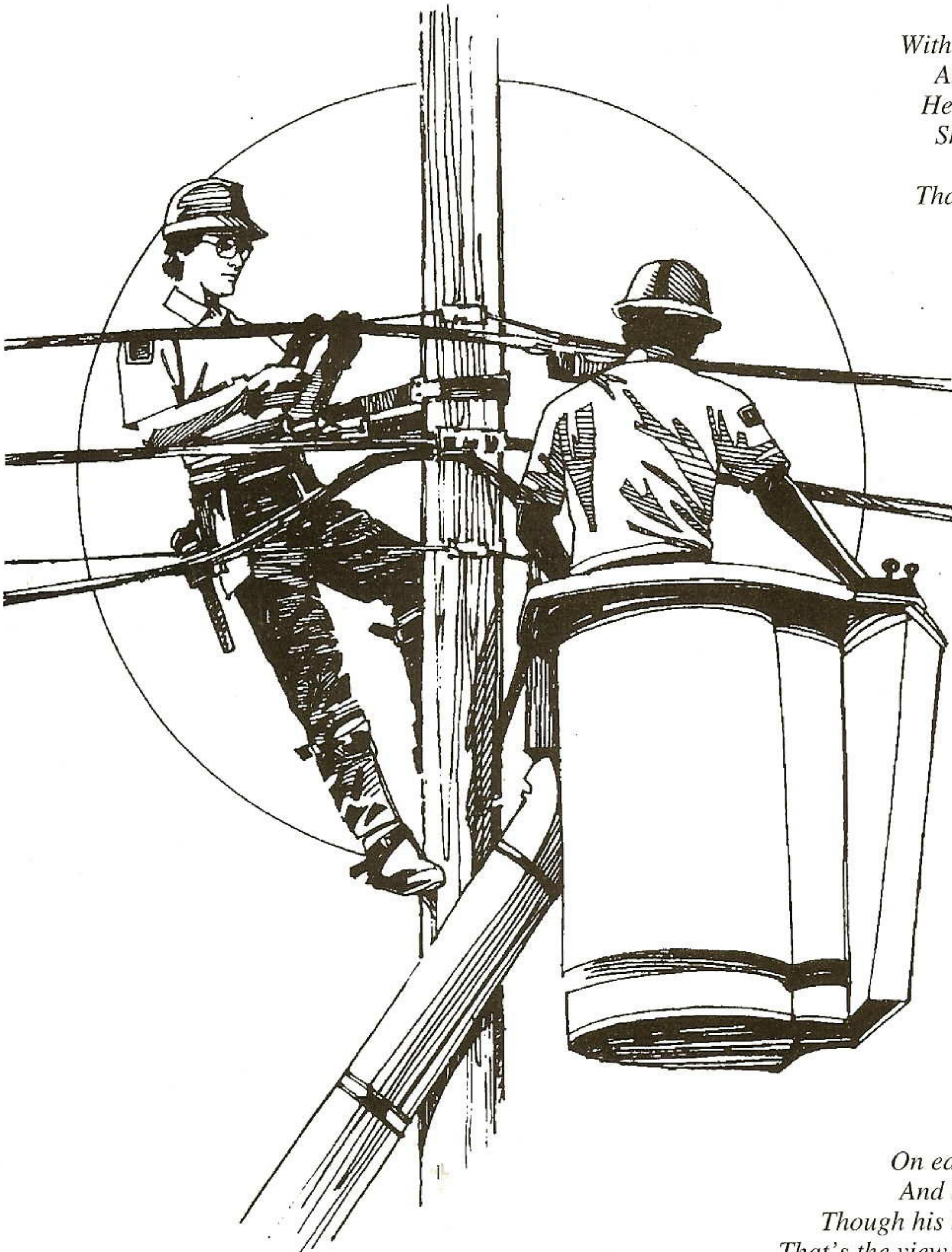
*With death in his hands  
For hours a day,  
You know that he's asked himself why.  
To put your life on the line  
Most people would say,  
That's the view from a lineman's eyes.*

*His friendships are made  
Through creosote and copper,  
And held with aluminum ties.  
Trust between these men  
Can be stronger than marriage,  
That's the view from a lineman's eyes.*

*And when birthdays are missed  
And family plans change,  
Little hearts then turn to small cries.  
And the mother explains  
Why daddy is away,  
That's the view from a lineman's eyes.*

*As the years slip away  
With each structure he climbs,  
On each hand he can still count five.  
And both feet are still there  
Though his knees show some wear,  
That's the view from a lineman's eyes.*

*As he hangs up his hooks  
The years have been good,  
And he knows that he's paid his tithes.  
But to do it all over?  
He probably would,  
That's the view from a lineman's eyes.*





# NEWS BRIEFS

## GSU co-sponsors environmental science education institutes

story and photo by Becky Watson and Liz Duhon

Forty-three Lafayette and Lake Charles area elementary and secondary teachers recently participated in environmental science and technology education institutes co-sponsored by GSU and the University of Southwestern Louisiana, McNeese State University, the U.S. Environmental Protection Agency and the Louisiana Department of Environmental Quality.

The institutes featured nationally renowned guest instructors in environmental science.

Highlights of the institutes featured sites that could be used for environmental field experiences for teachers and their students. Sites explored included

Jefferson Live Oak Gardens in New Iberia, Rockefeller Refuge and Constance Beach in Cameron Parish, which illustrated coastal erosion problems; and Prien Lake in Lake Charles, for air and water quality analysis. Local environmen-

tal issues, along with access to national technology databases, provided participants with up-to-date, hands-on content, methods and techniques that can be infused in area classrooms during the school year.



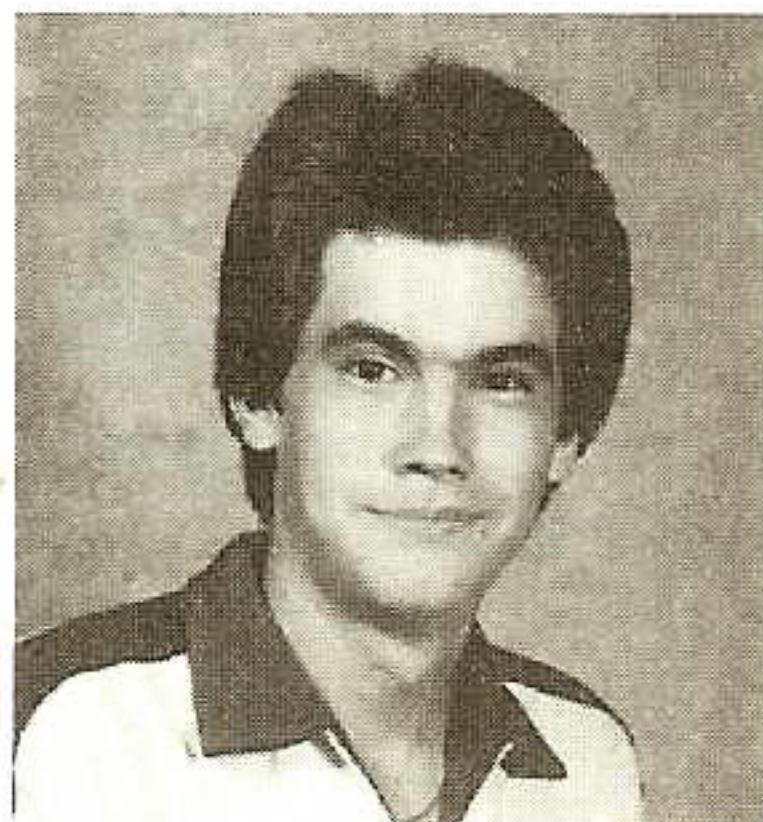
Participants in the GSU-co-sponsored institutes conduct water analyses at Prien Lake in Lake Charles.

## Employee's son featured on national broadcast

On Sept. 14, Beaumont's Linda Bridges, senior graphics technician, watched the season premier of "Rescue 911" and relived a nightmare.

Her son, Paul Marshall, was featured in a segment that reenacted a hostage situation in Beaumont where Marshall and two convenience store customers were held at gunpoint for 4-5 hours.

Marshall, the clerk on duty, was able to grab the assailant and pull her out of the store to the ground after



Paul Marshall

one of the customers grabbed the shotgun.

No one was injured during the episode.

Marshall worked briefly at Edison Plaza in the cafeteria.

## Service Center employees build wheelchair ramp

This past summer, employees at the Beaumont Service Center helped out fellow employee Cinda Battles, storekeeper, by building a wheelchair ramp at her house.

Battles and her husband had just finished building a house in China, Texas, when her husband was injured in a car accident and now is in a wheelchair.

Employees from all departments at the service center came together and donated funds to buy materials for a ramp for the Battles' new house.

Line Department employees who built the ramp are Ronnie Steptoe, line supervisor;

Nester Hillin, utility foreman-line; Morris Jenkins, heavy equipment foreman; Ike Harmon, merit roll craftsman; Willie Williams, lineman-1st class; Bobby Brown, utility man; Mike Semien,; and Leon Aiena, truckdriver-T&D.





## Promotions from May 1 - June 30, 1993

**Achord, Willis L.**, Baton Rouge, to pipeman welder 3/c, Gas Department (1).

**Badeaux, Carl J.**, Baton Rouge, to lineman 4/c, Electric T&D (2).

**Ball, Jerry T.**, Baton Rouge, to apprentice-substation department, Electric T&D (4).

**Bangs, Wayne O.**, Louisiana Station, to shift supervisor, Plant Production (18).

**Barton, James C.**, Conroe, to substation mechanic 1/c, Electric T&D (9).

**Beck, Kenneth K.**, Louisiana Station, to repairman 1/c, Plant Production (9).

**Bedell, Loys K.**, River Bend, to nuclear engineer, RBNG-Engineering (1).

**Blakley, Jimmy B.**, River Bend, to assistant plant manager-system engineering, RBNG-Plant Manager's Staff (10).

**Bonnitt, Douglas B.**, Nelson Station, to repairman 1/c, Plant Production (5).

**Borel, Paul M.**, Port Arthur, to relayman 1/c, Electric T&D (10).

**Brawner, Stephen J.**, River Bend, to supervisor-training standards, RBNG-Site Support (1).

**Bridgewater, Mary M.** Beaumont, to senior draftsman, Design Engineering (6).

**Broussard, Damon A.**, Port Arthur, to lineman 4/c, Electric T&D (2).

**Brown, David E.**, Conroe, to utility truckdriver, Electric T&D (12).

**Caldwell, Teresa M.**, Beaumont, to senior systems analyst, Computer Applications (12).

**Cavanaugh, Charles E. II**, Navasota, to lineman 1/c, Electric T&D (10).

**Clark, Brenda J.**, Orange, to customer contact representative, Division Accounting (5).

**Clymer, David R.**, River Bend, to senior human performance engineer, RBNG-Plant Staff (2).

**Collier, Burmont D.**, River Bend, to senior compliance analyst, RBNG-Safety Assessment & Verification (6).

**Crowell, Martin E.**, River Bend, to maintenance support supervisor, RBNG-Plant Staff (8).

**Cruz, Joe F.**, Conroe, to serviceman 1/c, Electric T&D (9).

**Daigle, Kevin C.**, Lafayette, to lineman 2/c, Electric T&D (4).

**Daigle, Michael K.**, Willow Glen, to test technician 1/c, Plant Production (3).

**Davidson, Peeler O.**, Port Allen, to district supervisor,

T&D-Line (36).

**Dennis, Frank A.**, Jennings, to lineman 3/c, Electric T&D (1).

**Findish, Ronald J.**, River Bend, to supervisor-maintenance training, RBNG-Site Support (8).

**Foxworth, Jerry W.**, Woodville, to lineman 1/c, Electric T&D (2).

**Fruge, Mark L.**, The Woodlands, to senior engineering assistant, Electric T&D (10).

**Giadrosich, Kenneth J.**, River Bend, to director-quality assurance, RBNG-Safety Assessment & Quality Verification (10).

**Hasten, Melvin L.**, Gonzales, to lineman 3/c, Electric T&D (3).

**Henning, Stephen B.**, Nelson Coal, to repairman 1/c, Plant Production (4).

**Hicks, Douglas B.**, Beaumont, substation mechanic 1/c, Electric T&D (10).

**Hollkamp, Herbert J.**, River Bend, to outage director, RBNG-Plant Staff (9).

**Hurst, John F.**, River Bend, to supervisor-engineering support training, RBNG-Site Support (6).

**James, Bradley K.**, Baton Rouge, to substation mechanic 4/c, Electric T&D (1).

**James, Lerail**, Lake Charles,



lineman 3/c, Electric T&D (3).  
**Kelly, Robert T.**, River Bend, to instrument & controls supervisor, RBNG-Plant Staff (1).

**Lacour, James W.**, Nelson Coal, to repairman 2/c, Plant Production (1).

**Lee, Colwyn**, Conroe, to communication serviceman 3/c, Electric T&D (9 mos.)

**LeFort, Penelope S.**, River Bend, to supervisor-technical training, RBNG-Site Support (8).

**Lemoine, Michael L.**, Sabine Station, to test technician 1/c, Plant Production (2).

**Lewis, Lionel Jr.**, Gonzales, to lineman 4/c, Electric T&D (2).

**Lundholm, Robert C.**, River Bend, to process systems supervisor, RBNG-Plant Staff (15).

**Marks, Kenneth R.**, Lake Charles, to lineman 2/c, Electric T&D (2).

**Martin, Heath A.**, Baton Rouge, to lineman 4/c, Electric T&D (2).

**Maxson, Craig R.**, River Bend to supervisor-performance assessment, RBNG-Safety Assessment & Verification (8).

**McGee, Reginald O.**, Willow Glen, to test technician, Plant Production (1).

**Miller, Charles L.**, River Bend, to supervisor-modification construction, RBNG-Plant

Staff (33).

**Millet, Christopher T.**, Baton Rouge, to pipeman apprentice, Gas Department (1).

**Moore, Henry A.**, Port Arthur, to serviceman 3/c, Electric T&D (1).

**Morgan, Stephen L.**, Port Allen, to utility foreman, T&D-Line (25).

**Morris, William J.**, Huntsville, to lineman 2/c, Electric T&D (1).

**Nail, Kenneth M.**, Jennings, to lineman 3/c, Electric T&D (1).

**Phillips, Charlotte S.**, Lafayette, to customer contact representative, Division Accounting (5).

**Rabb, Archie M. III**, River Bend, to Rad Protection Technician 2/c, Plant Production (4).

**Raborn, Cecil L.**, Conroe, to heavy equipment foreman, T&D-Line (14).

**Rains, Norman L.**, Nelson Gas & Oil, to electrical maintenance foreman, Plant Production (12).

**Ross, Terry C.**, Baton Rouge, to utility foreman, T&D-Line (24).

**Shannon, Francis X.**, Port Arthur, to lineman 4/c, Electric T&D (3).

**Simmons, Robert J.**, Beaumont, to substation mechanic 4/c, Electric T&D (7 mos.)

**Small, Michael H.**, River Bend, to senior quality assur-

ance engineer, RBNG-Safety Assessment and Verification (8).

**Soape, Justilian T.**, Sabine Station, to utility worker II, Plant Production (2).

**Soileau, Elizabeth V.**, River Bend, to systems engineer, RBNG-Engineering (4).

**Sparks, Randy**, The Woodlands, to apprentice-line & service departments, Electric T&D (5).

**Stelly, Craig J.**, Lafayette, to serviceman 1/c, Electric T&D (7).

**Stephenson, Buddy D.**, Denham Springs, to apprentice-line & service departments, Plant Production (8).

**Stout, Peggie B.**, Beaumont, to senior information analyst, Computer Applications (25).

**Tate, Bradley E.**, River Bend, to supervisor-outage planning & scheduling, RBNG-Plant Staff (9).

**Walker, Kathryn G.**, Beaumont, to staff accountant II, Accounting Services (5).

**Wells, Don H.**, River Bend, to supervisor-operating experience, RBNG-Safety Assessment & Verification (15).

**White, Tommy L. Jr.**, Louisiana Station, to repairman 1/c, Plant Production (15).

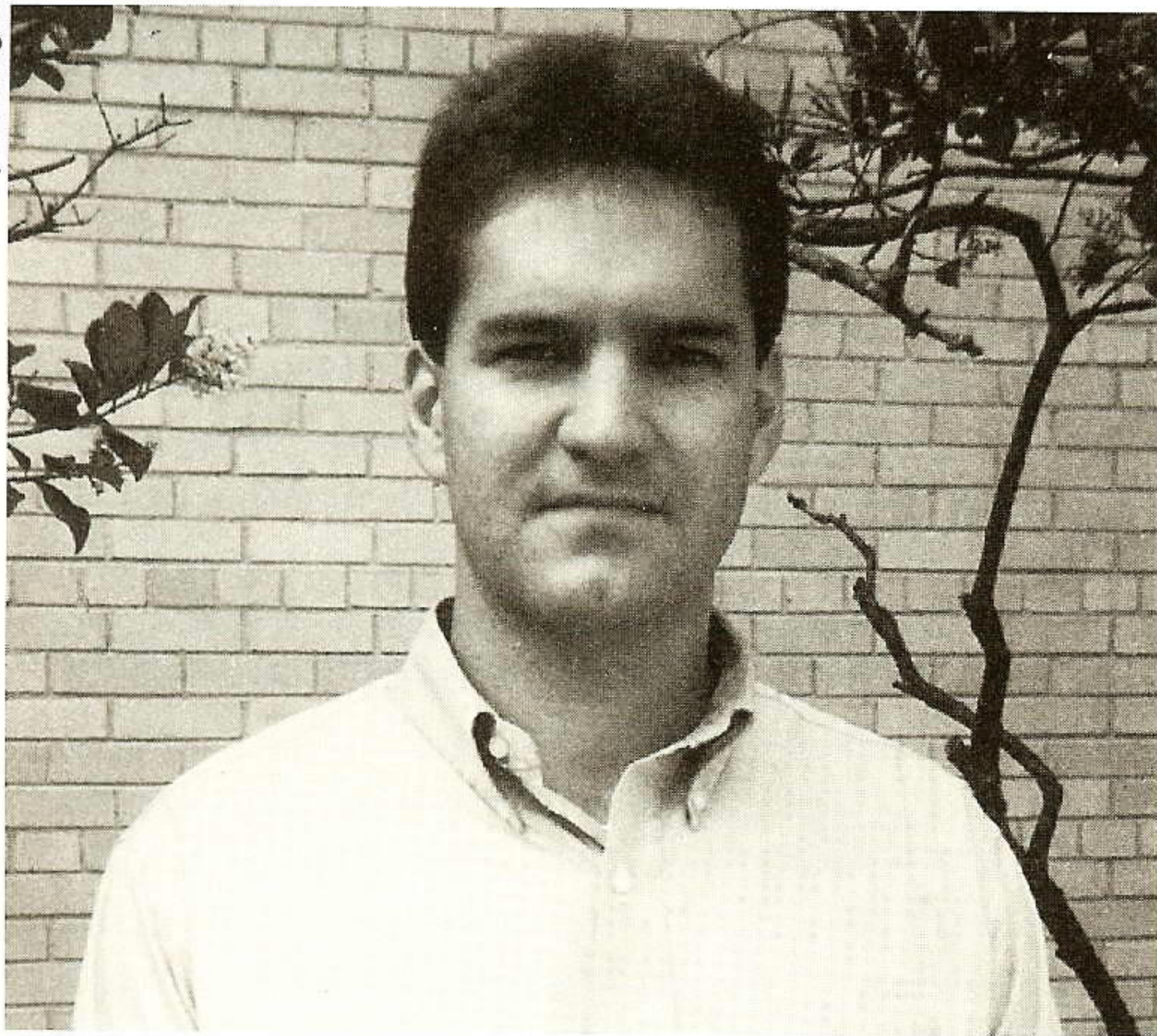
**Willis, Thomas R.**, Conroe, to lineman 1/c, Electric T&D (1).

( )denotes years of service



# MAILBOX

Pris Gallagher



Greg Guilbeau

## Presence appreciated

"Thank you for taking time out of your schedule to attend our sales meeting," writes Sandra Daly, broker/manager for C.J. Brown Residential Inc. to **Greg Guilbeau**, T&D Engineer, Baton Rouge. "Everyone in attendance enjoyed your presentation and received useful information regarding the potential hazards of power lines. Your presence was appreciated by all."

## We need more people like that...

"About 10 days ago I had light problems and cannot say enough kind words about Mr. **Benny Kite** from your Cleveland office," writes Minnie Thomas, a senior citizen and retired teacher in Shepherd, Texas. "He worked real hard to help solve the problem with a 24-hour

reading and checking wires in the meter. Naturally, I was scared stiff after the real hard rains, lightning and bad weather. We need more people like that nice, kind man."

Kite is a serviceman-1st class in Cleveland.

## Best publicity source

**John Conley**, vice president, Western Division, received the following letter from Jane Miller, executive vice president of the Grimes County Chamber of Commerce:

"Utility providers frequently receive less than favorable coverage by the press and media. Your best source of positive publicity can be your local employees. That is certainly the case in Navasota.

"A recent example was the involvement of GSU person-

nel in the 1993 Navasota Nostalgia Days Festival. Numerous local employees served in auxiliary roles, and some individuals deserve an above-and-beyond the call of duty pat on the back.

"**John Browning** chaired ongoing entertainment, which requires weeks of advance preparation and onsite supervision during the festival.

"**John Biehn** was generous with his time, assisting with the layout prior to the event, working throughout the weekend and with wrap-up after the fact.

"GSU's public image is enhanced by such employees willing to commit their time and talent to community events. Navasota and GSU are fortunate to have these individuals in their midst."

Browning is district superintendent, Navasota district. Biehn is an engineering assistant, Navasota.

## Community helpers

"I am writing to express our appreciation of GSU's excellent response to our recent outage at our PFU North Substation," writes Jeffrey D. Ezernack of CITGO petroleum in Lake Charles, La. "We experienced a fault on a bus that is fed from your PCI substation. Due to the tremendous damage to the bus, we were not able to return it to service, thus not allowing the start-up of our large compressor motor.

"The GSU substation and relay personnel were instrumental in working with CITGO personnel in analyzing the fault. GSU was a key player in the team effort to provide an alternate feed. It is teamwork like this that continues to build confidence in your service support to the industrial

community."

The letter was written to **Ted Meinscher**, vice president, Lake Charles division.

## Recognizing customer relationships

**Donald Perio**, coordinator-customer credit, Baton Rouge, received the following letter from David Vey of Vey Development Inc.

"I would like to thank you for making time available to discuss the electrical service at Esplanade Mall.

"It is reassuring to know that a company the size of Gulf States Utilities recognizes long-standing business relationships with customers."

## We will always be indebted...

**Sharon Englade**, supervisor-public information, Beaumont, received the following letter from the board of directors of the Edison Museum in Vienna, Ontario, Canada:

"We...would be remiss if we did not drop you and your board of directors a line in appreciation for arrangements made for your (Edison Plaza Museum) curator, **Jill Street**, to come to our open house...Miss Street, a very gracious, intelligent lady, took an active part, as well as giving an excellent speech on Thomas A. Edison...We will always be indebted to Miss Street and your board."



# SERVICE ANNIVERSARIES

May/June

# 1993

## 40 YEARS

**William C. Hart**  
General Services  
Beaumont

## 30 YEARS

**Patricia A. Bailey**  
Computer Applications  
Beaumont

**Stephen V. Blair**  
Plant Production  
Willow Glen

**Bobbie T. Burke**  
Division Operations  
The Woodlands

**Gloria S. Hebert**  
Division Accounting  
Sulphur

**Thomas W. Reeves**  
Engineering  
Beaumont

**Benjamin W. Reiser**  
Risk Mgt. Services  
Beaumont

## 20 YEARS

**Orin K. Bourque**  
Electric T&D  
Baton Rouge

**Randy J. Brandon**  
Plant Production  
Louisiana Station

**Joe L. Burton**  
RBNG Engrg. & Admin.  
River Bend

**Gerald J. Duplechin**  
Plant Production  
Louisiana Station

**Richard W. Goudeau**  
Plant Production  
Willow Glen

**Darrell W. Granger**  
Electric T&D  
New Caney

**Gary N. Kramer**  
Accounting Services  
Beaumont

**Susan W. Mayrant**  
Electric T&D  
Huntsville

**Polo P. Mouton**  
Electric T&D  
Baton Rouge

**Louis R. Pulliam**  
Electric T&D

Zachary  
**Glenn M. Sealy**  
Human Resources  
Beaumont

## 10 YEARS

**Barry M. Bergeron**  
Electric T&D  
Baton Rouge

**Jimmy B. Blakely**  
RB Bus Sys. & Ovrsght.  
River Bend

**Steven M. Broyles**  
Fleet Administration  
Baton Rouge

**Gerard L. Broyles**  
Fleet Administration  
Lake Charles

**Terri S. Carley**  
Division Accounting  
Baton Rouge

**Charles E. Cavanaugh II**  
Electric T&D  
Navasota

**Anthony R. Daisy**  
Electric T&D  
Baton Rouge

**Tommye D. Die**  
Division Accounting  
Orange

**Dale M. Fontenot**  
Power Supply  
Beaumont

**Myra B. Foreman**  
Division Accounting  
Beaumont

**Kenneth J. Giadrosich**  
Bus Sys. & Ovrsght.  
River Bend

**Randy J. Guillory**  
Plant Production  
Nelson Coal

**Phillip Guillory**  
Plant Production  
Nelson Coal

**Tamara A. Guillory**  
Electric T&D  
Lafayette

**Timothy E. Harland**  
Plant Production  
Sabine Station

**Jude A. Honore**  
Electric T&D  
Baton Rouge

**Mark W. Jackson**  
Electric T&D  
Conroe

**Susan S. Jeffcoat**  
Engineering Svcs.  
Beaumont

**Willie C. Johnson Jr.**  
Plant Production  
Sabine Station

**Woodrow A. Landry**  
Plant Production  
Willow Glen

**Carliss F. Lands**  
Division Accounting  
Baton Rouge

**Lisa A. Martin**  
Computer Applications  
Beaumont

**Mark F. McClain**  
Plant Production  
Sabine Station

**Jude R. Morrison**  
Electric T&D  
Lafayette

**Katharine A. Newberry**  
Division Accounting  
Beaumont

**Danny J. Norton**  
Electric T&D  
Orange

**Bradley P. Olinde**  
Plant Production  
River Bend

**Sherry G. Overbeck**  
Customer Service  
The Woodlands

**Karen F. Phillips**  
Computer Applications  
Beaumont

**Patrick K. Phillips**  
Electric T&D  
Crystal Beach

**Rhonda W. Pitre**  
Division Accounting  
Baton Rouge

**Larry L. Rachal**  
Bus Sys. & Ovrsght.  
River Bend

**Richard D. Riggs**  
Electric T&D  
Beaumont

**David B. Soileau**  
Plant Production  
Louisiana Station

**Loyal L. Staneart**  
Plant Production  
Lewis Creek

**Charles L. Swinea**  
Fleet Administration  
Conroe

**Joseph Taylor III**  
Electric T&D  
Conroe

**Willie A. Taylor**  
Electric T&D  
Beaumont

**Larry D. Thompson**  
Plant Production  
Sabine Station

**Paul A. Touns**  
Electric T&D  
Baton Rouge

**Sharon J. Williams**  
Electric T&D  
Conroe

**James G. Worthey**  
Computer Applications  
Beaumont



# PLAIN TALKS

P.O. Box 2951  
Beaumont, Texas 77704

Address Correction Requested

BULK RATE  
U.S. POSTAGE  
**PAID**  
Beaumont, Texas  
Permit No. 11

## ***"Heroes In Our Midst"*** **A Tribute**

They were two people who loved and were loved by all.  
They were strong in their beliefs and whenever help was needed  
they would respond to every call.

They were as human as human could possibly be.  
But, there was a special deep down feeling, when it came to you and me.

They reached the inner most dimension of our souls,  
they made us glad to be a part of their lives, a family as a whole.

They leave with us a touch of the brightness and the glowing hope for all mankind,  
that we may love one another with our heart and with our mind.

They stand tall in our thoughts as they lay quiet in our Savior's breast,  
they have fought a glorious and gallant war.  
So, now it is time for them to rest.

We shall miss you, "Our Heroes," but your gift of love to each of us will not die.  
We will love you always until we meet by and by.

*A tribute to Allen "Butch" Daniel and Glenda Broussard, our heroes.  
God bless and God keep you both.*

*by  
Edward Stewart Jr.  
Electrician-1st class, Neches Station*



Printed on Recycled Paper