

Plain Talks & News



UNDERGROUND

JUNE, 1968

Chipping at the Foundations

Editor's Note: This editorial first appeared in the June issue of East Texas magazine, the official publication of the East Texas Chamber of Commerce. Our thanks to Fred Pool, managing editor, for penning such a fine piece and for granting us permission to reprint it here.

WE are constantly amazed at the gullibility of some local city governments in "falling for" the honeyed words of bonding houses and other agencies and individuals who would talk the local city fathers into abandoning the goose that laid the golden egg in favor of what, on the surface, appears to be a bonanza: "If only the city government would take over — and operate — the local distributing system for gas, electricity, etc." But the facts won't substantiate the claim.

A locally operated utility system (1) pays no taxes, local, state, school, water district or other; (2) contributes no manpower or leadership to the community, such as chairman of the United Fund, chamber of commerce, civic clubs; (3) has no overall advantages such as are available to a system-wide operation, and which become so essential in any and all emergencies; (4) does not have the operating talent or expertise available to a large company (couldn't afford it); and (5) would not be under the same obligation to render a high quality of service, maintain the ultimate in safety standards nor, for that matter, give any assurance of a continuation of the long-standing policy regarding local purchases, etc.

It has long been traditional that investor owned utility companies urge their local managers and company employees to become active in all community betterment programs. And we shudder to think how our East Texas communities would have fared during the past two decades, to say the least, had it not been for the active role these investor owned companies have taken in local programs of industrial development.

WE (the public) expect and receive top quality service from these companies with their top level management, industrial planning departments, technological advances, and highly trained service personnel in the specialized utility field, a factor that would certainly be lacking, in the main, in a municipally owned and operated system.

Free private enterprise means something to us. It is the foundation upon which we have built a great nation, a great economy, and a great East Texas. The eroding factors involved in any attempt to decimate the number of privately owner, investor-financed businesses, of whatever character, have their effect upon all of us. And it can only be described as retrogression; certainly it is not progress.

As an organization pledged to the building of a more prosperous East Texas we must voice our alarm. And in spite of the fact that the local news media of all types would lose advertising revenue from the many promotional programs sponsored by these companies, that is not the first consideration. The **first** consideration in our mind at least, is the duty incumbent upon us to do whatever we can to halt this insidious drift toward socialism whatever its disguise!

And make no mistake about it; the cost to our local communities in leadership, manpower, payroll revenue and taxes will have to be compensated for by someone.

And who do you think that is going to be?

News Briefs



S. 2564 WOULD ALLOW TAX-EXEMPT ELECTRIC SYSTEMS PART-OWNERSHIP OF NUCLEAR POWER PLANTS

This bill, co-sponsored by Senator Aiken (R. -Vt.) and the late Senator Robert Kennedy, would force investor-owned electric companies to offer

partnership in new nuclear power plants to electric cooperatives and municipally owned electric systems. The bill authorizes the Atomic Energy Commission to deny companies permission to construct nuclear plants unless the applying companies comply with a long list of provisions. In other words, S. 2564 would give some government agency, probably either the AEC or FPC, the responsibility for future development of atomic power.

Investor-owned companies have invested \$5-1/2 billion in the development of low-cost power from the atom. There are 60 nuclear power plants under construction or on order with an additional commitment of \$7 billion. Our Company participates in four nuclear research and development programs.

With the number of hydroelectric power dam sites rapidly diminishing, the tax subsidized, public power agencies now seek another free ride at the expense of investors and customers of investor-financed companies.

PROPERTY OWNERS OF VINTON, SULPHUR, MERMENTAU TURN DOWN MUNICIPAL BID FOR GAS

In voting held June 8, property owners of Sulphur, Mermentau and Vinton, Louisiana, voted against permitting the governing

bodies of these cities to authorize the sale of bonds to purchase the gas distribution system of United Gas-Pennzoil. Voters in Westlake and Estherwood authorized purchase of the gas systems in their areas.

NEW PEAK LOAD RECORDS SET

On June 10 the Company exceeded the 1967 record peak load with a brand new record of 2,447,300 kw of gener-

ation and a record of 50,697,000 kwh generated in a 24-hour period. The previous record, set only last August 9, was a peak of 2,299,600 kw and a 24-hour generation of 47,958,400 kwh.

Frank Delage, chief system operator, said this is only the beginning. "The really hot weather hasn't gotten here yet. I feel sure we'll set a new record somewhere over 55 million kilowatt hours generated for a 24-hour period before this summer is over."

COMPANY TO PARTICIPATE IN FAST BREEDER RESEARCH

GSU is among 21 investor-owned utilities who along with the Gulf General Atomic Company have announced plans to design and develop components for a gas-cooled fast breeder (nuclear) reactor (GCFR) prototype of experimental facility. The long range objective of the two-year, \$3.5 million development effort will be the construction and operation of a large GCFR power station, hopefully in the 1980's.

A fast reactor is one in which the chain reaction is sustained primarily by fast neutrons. That is, no moderator is used to slow down the neutrons from the fast speed in which they leave the fissioning process.

Utility companies are interested in the development of a fast breeder nuclear reactor because it is smaller, more efficient and above all cheaper to operate than the older thermal nuclear reactor. During normal operation the GCFR will actually produce more of its own fuel than it burns.

COMPANY HOSTS PEPA MEETING

The Company played host to the Petroleum Electric Power Association (PEPA) June 2-4 at the association's Fortieth Annual Meeting. Some 100 members, guests and wives attended the confab held at the Ridgewood Motor Hotel in Beaumont.

PEPA is the outgrowth of a desire on the part of electric power companies to render greater service, through mutual group effort to the petroleum industry. L. V. Dugas, vice president and general sales manager and a past president of the association, gave the welcoming address. Among officers elected at the meeting was W. A. Thomson, supervisor of industrial and commercial sales for the Beaumont division, who will serve as the group's vice president for the coming year.

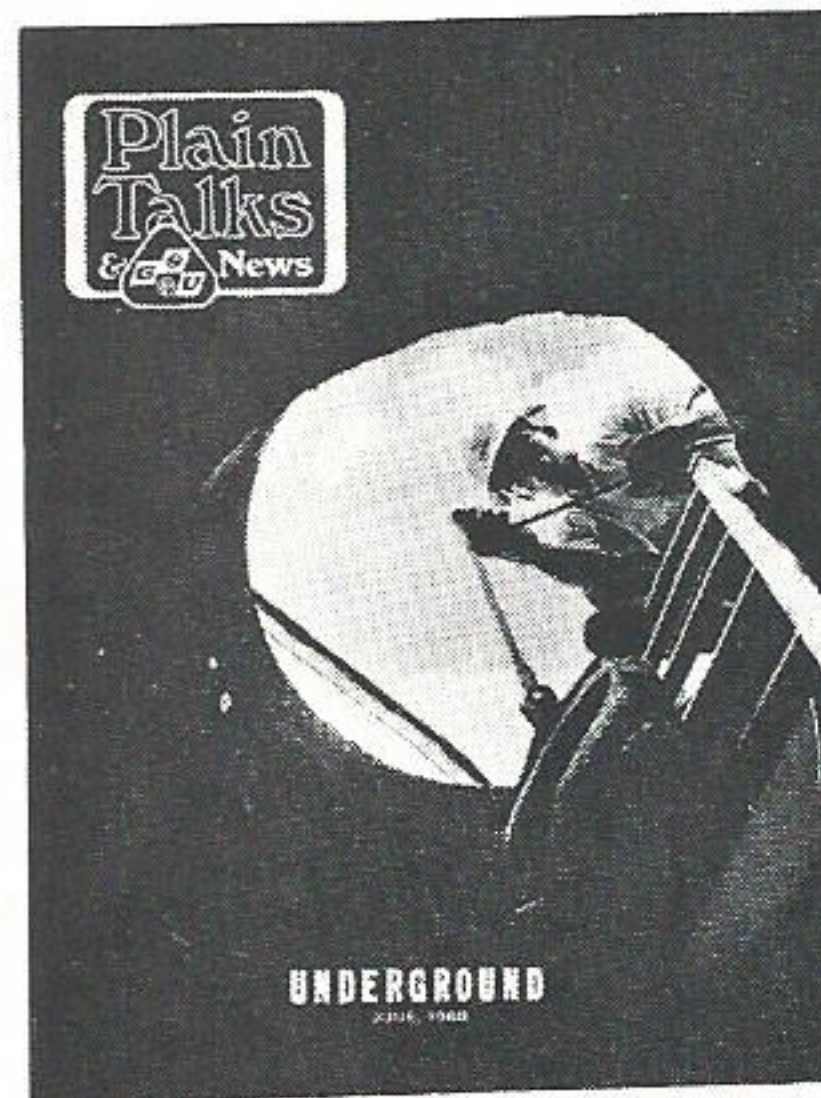
DEATH COMES FOR TWO GULF STATERS

As Plain Talks goes to press we are saddened by the news of the death of two long time members of the Gulf

States family.

On June 17, W. E. Dinkins, district superintendent for the Conroe district, died suddenly as the result of a heart attack suffered in a doctor's office in Houston. He was 63.

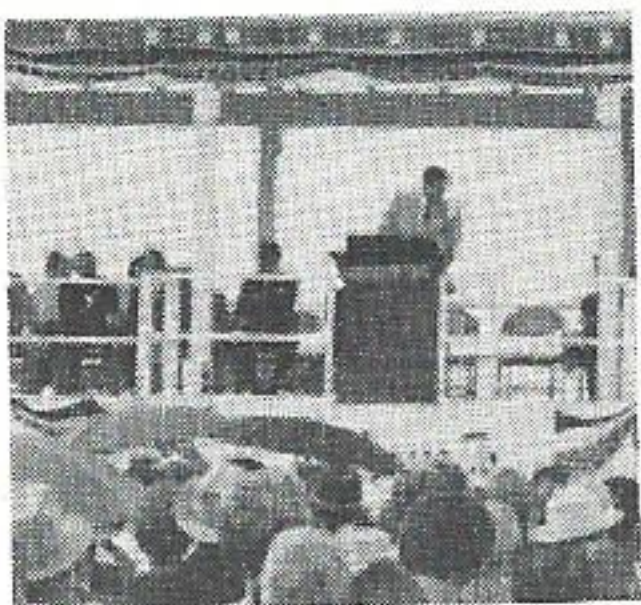
On June 18, J. E. Westbrook, 78, retired building superintendent, Beaumont, died in St. Elizabeth's Hospital there after a brief illness.



OUR COVER

Gordon Ellis, helper in the substation department in Baton Rouge, lowers a bag of tools to a fellow worker in a vault beneath one of that city's busiest streets. Underground distribution, of both residential and commercial varieties, is explained on P. 3.

Plain Talks and News • Vol. 46, No. 6 • June, 1968



Somerville P. 12



Roses

P. 7



Underground

P. 3

2 *Four Men Reassigned in Baton Rouge Division*

3 *Underground*

6 *Roses Among The Thorns*

8 *Service Awards*

9 *GSU News*

10 *GSU, Atoms and Youth*

12 *Letters*

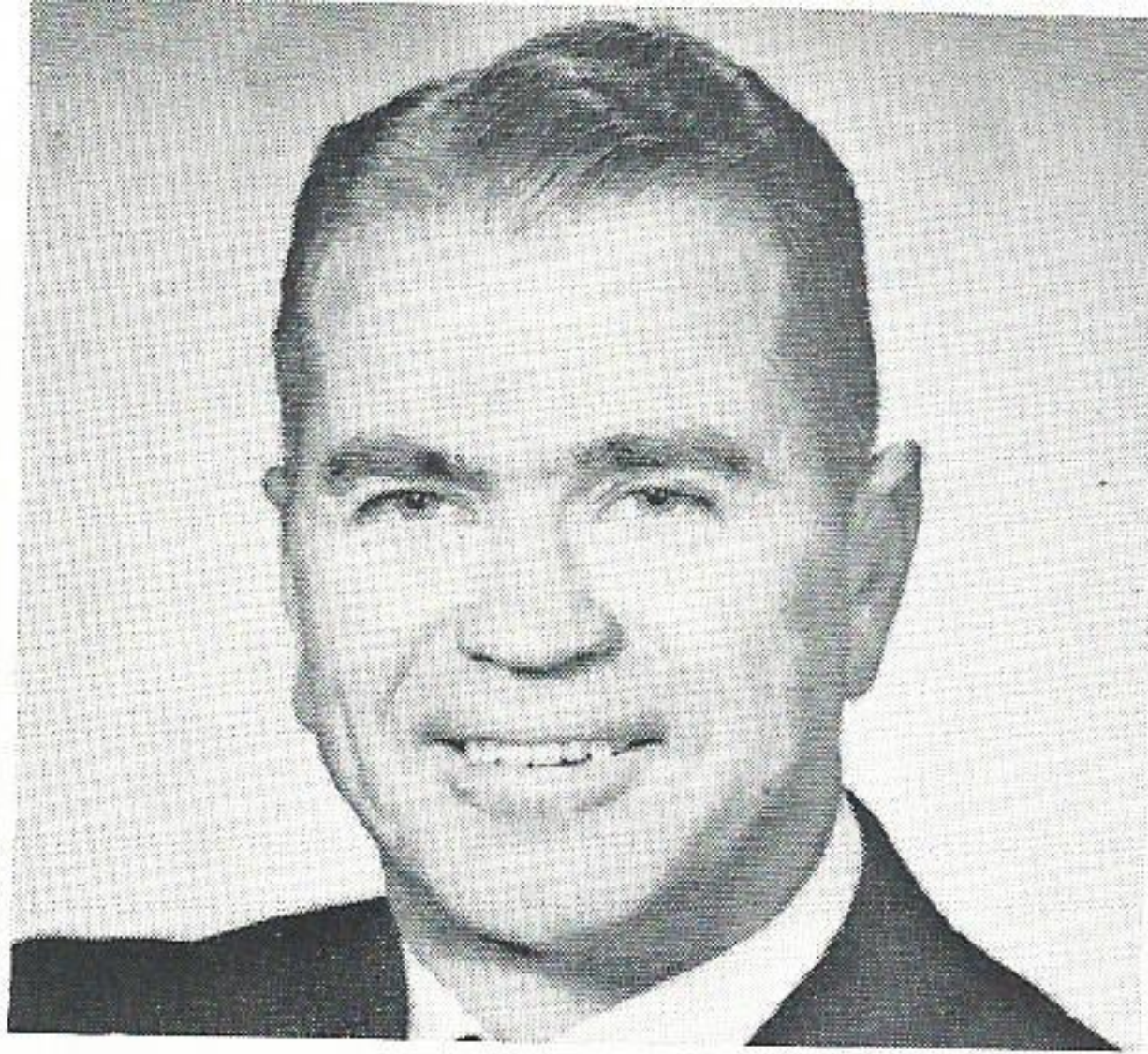
18 *Coffee Cup*

PUBLISHED MONTHLY FOR GULF STATES UTILITIES EMPLOYEES

James S. Turner Director, Public Relations
Bob Mathews Associate Editor, Beaumont
Walt Wright Contributing Editor, Baton Rouge
John Powers Contributing Editor, Beaumont
Member of Southeast Texas Industrial Editors
and International Council of Industrial
Editors.

Effective June 16

Four Men Are Reassigned In Baton Rouge Division



Jack W. Kirkland

New assignments for four men in the Baton Rouge Division became effective June 16.

Jack W. Kirkland, manager of electric operations for the Division since 1965, was transferred to the Company's Beaumont office where he assumed the new title of transmission construction coordinator for the electric system.

Virgil M. Shaw, formerly sales superintendent for the Baton Rouge Division, advanced to division manager of electric operations.

Charles D. Glass, formerly supervisor of commercial sales for the Division, moved to division sales superintendent.

Ed. Loggins, formerly industrial sales engineer, succeeded Glass as commercial sales supervisor, with the additional duties of industrial sales.

The Company's heavy transmission line construction program necessitates the full attention of a skilled administrator with substantial engineering experience.

It is this need which Mr. Kirkland will fulfill in his new post.

An electrical engineering graduate of Louisiana State University, Mr. Kirkland joined GSU in 1939 in Baton Rouge. He later moved to the Company's Lafayette district where he worked as a district engineer and power engineer until World War II interrupted and he entered the U. S. Navy. Upon his return, he resumed his engineering career and gained experience in the Lake Charles, Navasota and Beaumont Divisions.

In 1957, he was promoted to operating superintendent for the Navasota division and in 1960 he transferred to Baton Rouge as electric operating superintendent. In 1963 he was named sales superintendent of the Baton Rouge Division and in 1965 he was promoted to manager of Baton Rouge division.

Mr. Kirkland, a native of Alexandria, La., is married to the former Allegra Doughty of Manifest, La. They have three children.

In 1966, Mr. Kirkland completed the Harvard University Graduate School of Business Advanced Management Course.

He has been active in church and civic work in Baton Rouge, having served as president and board member of the Salvation Army, committee chairman for the Lions Club and chairman and member of the board of deacons of the Broadmoor Baptist Church.

Mr. Shaw has been superintendent of sales in the Baton Rouge Division since he was transferred from Port Arthur and promoted in 1965.

A native of Mexia, Tex., Mr. Shaw graduated from Texas A&M with a degree in mechanical engineering. He joined Gulf States in 1949 in Beaumont and worked as an industrial engineer in the Navasota Division before moving to the Port Arthur Division where he rose to supervisor of commercial and industrial sales. While in Port Arthur he was awarded the Jaycee's distinguished service award in 1957.

Mr. Shaw completed the Public Utility Executive Program at the University of Michigan in 1964.

He is married to the former Ann Remsen of Beaumont and they have four children.

Mr. Glass, a graduate of Texas A&M, joined GSU in 1949. He held positions in sales engineering in Beaumont, Lake Charles and Lafayette, with time out for duty with the U. S. Air Force from 1954 until 1956. Upon completion of his tour of duty he returned to Lafayette at industrial engineer. In 1964, for his outstanding civic work he was named "Kiwanian of the Year."

Mr. Glass transferred from Lafayette

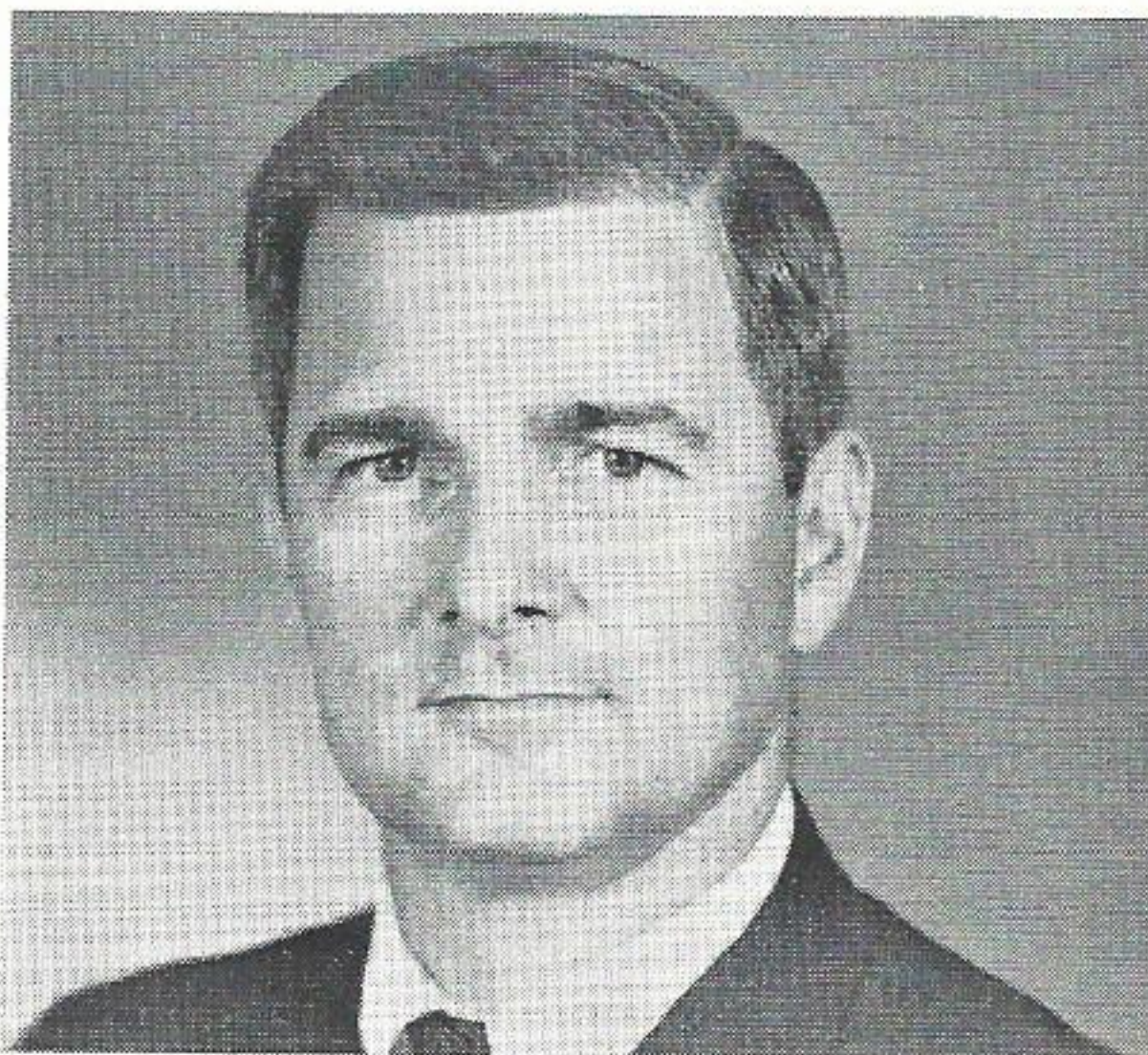
Continued on Page 15



Virgil M. Shaw



Charles D. Glass



Ed. Loggins



Preparing to enter the "underground."

UNDERGROUND

URD, UCD - Important Initials In Today's Utility Business

CARS slow as they drive past the barricades. The line truck's headlights loom over the manhole as though trying to peer downward into the vault. The manhole cover is moved aside with a loud clanging of iron against concrete. The man ahead of you on the ladder flips on his flashlight and you find you're in a hole among a maze of large cables.

You're in the underground!

A shiver goes up your spine as you hear the rumble of the first car overhead, and the constantly dripping water adds an air of excitement to the scene. Your voice bounces off the damp cement walls with a hollow echo.

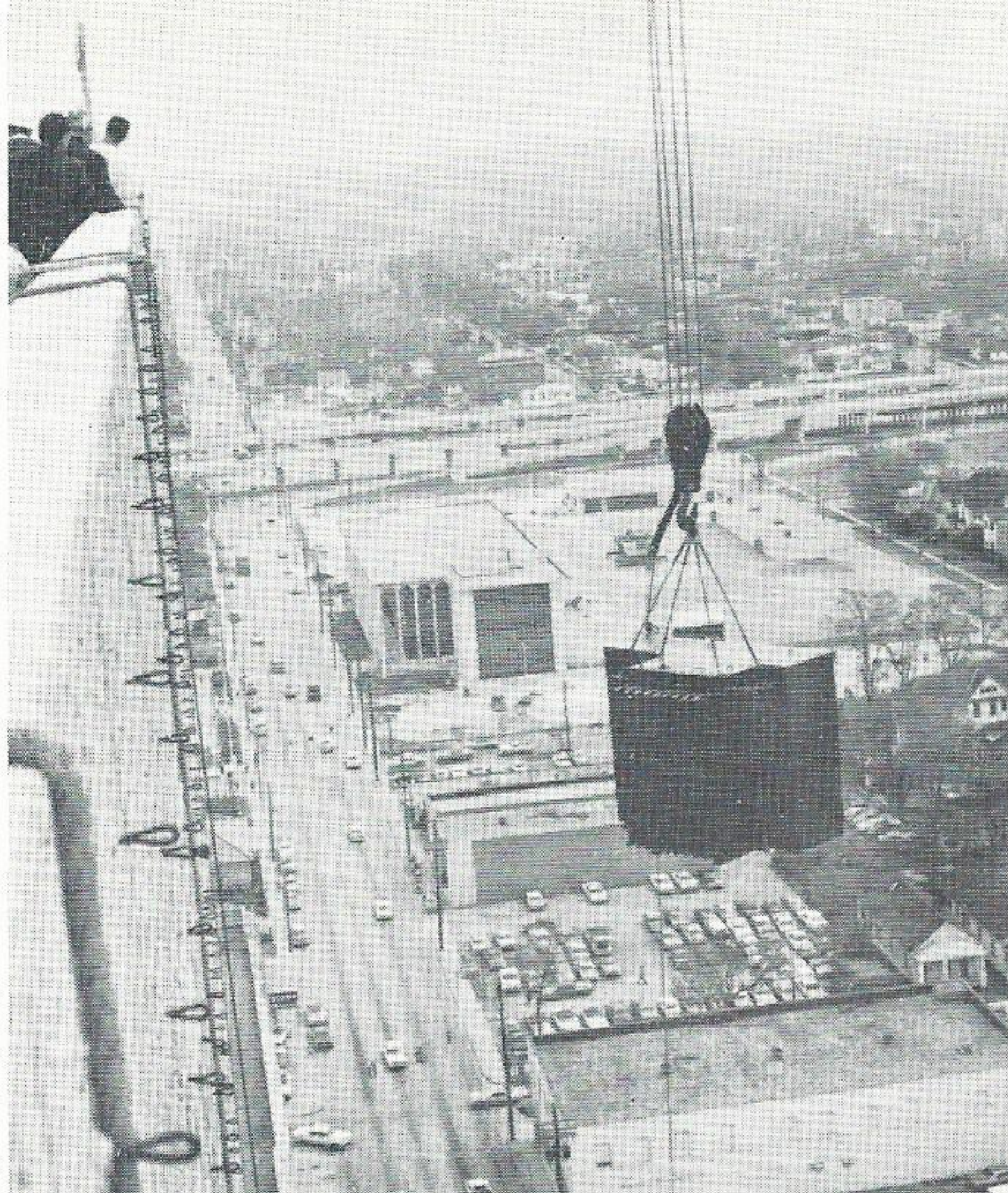
Usually one thinks of a substationman or a lineman as a rugged individual who spends much of his time either working high above ground on a utility pole or a substation's steel beams, his face tanned by the sun, his clothes spotted with perspiration. It's difficult to imagine these same men working by the light of a flashlight below the ground. Few people are aware that the Company maintains some 200 miles of distribution lines beneath the ground.

Probably the most talked about sets of letters in the utility business today are UCD and URD. Many Gulf Staters have heard these initials but relatively few know what they stand for.

UCD means "underground commercial distribution" and URD means "underground residential distribution."

Underground commercial distribution is not really a new thing. The downtown areas of Baton Rouge, Beaumont and Lake Charles have been served by an underground distribution network for many years.

DOWNTOWN areas in large cities throughout America are served by underground systems. This is necessary when an area becomes congested with buildings, and electric loads per square block become very high. Crowded utility poles on every corner do not make for a pleasing aesthetic effect, and maintenance could hinder traffic flow. The answer? UCD.



Huge transformer is lifted atop 22-story Louisiana National Bank Building in Baton Rouge. The modern skyscraper is served from the city's underground network.

TO accomplish the task of serving large commercial areas by an underground network, large vaults are built beneath the streets of a city. Throughout the network, transformers are placed in these vaults, which are necessary wherever service must be fed off the main line to a large customer. This generally means there are vaults at each corner of a block.

Underground work on the UCD network does not always mean working beneath the ground. In very tall buildings transformers are placed either throughout the building at various levels, or in some cases are located on top of the building and the heavy cable is worked downward through the structure.

The soon-to-be-completed Louisiana National Bank Building in Baton Rouge is an example of an underground installation being placed high in the air. To bring service into the 22 story structure, served from the underground network, three 1500 kva transformers were located on the roof high above the city.

As new techniques and equipment combined to lower the cost of underground electric service, our Company began studying its application to residences.

The recent development of synthetic-insulated cables, costing much less than lead coated cables

previously used in installation of underground facilities, was a major breakthrough. Today, a residence in a new subdivision can be served from an underground facility for a customer cost of about \$2 per front foot. This cost includes streetlighting served from the underground system. The result has been an accelerating trend toward underground residential service, especially in new subdivisions.

Only in the last six or seven years has the cost of underground service become low enough to make it practical for the average residential customer. Customer contributions are still necessary. Research and development in the past ten years, however, have reduced the cost of underground service to a residence from about eight to ten times the cost of overhead service to only about twice the cost of overhead.

WHEN a builder wishes electric service to be underground in a subdivision he is planning, the Company will install, or have installed, the primary and secondary lines in trenches beneath the ground. Transformers will be located either on pad mountings at the rear servitude of the lots or in subsurface installations along the street at the front of the property.

When the customer's home is ready for the underground service, Company personnel dig a trench and lay a service cable from the main lines to the meter location.

Large new apartment complexes and entire new subdivisions are being served underground through-



Inquisitive pair of LSU coeds peer over the shoulder of John Hobbs, substation mechanic in Baton Rouge, as he checks a pad mounted transformer bringing underground service to a sorority house on the campus.

out the system. In Baton Rouge, for example, some 25 apartment complexes are being served underground, 10 are presently under construction and an additional 8 are planned. Also, in Baton Rouge some 70 subdivisions have been served underground, or are approved for construction, and some 14 are in various stages of planning.

Throughout the system personnel from various departments maintain underground facilities as part of their regular jobs. The men who install and maintain the underground lines undergo continuous training.


"I like working in URD because it is new and interesting," says John Hobbs, substation mechanic first class in Baton Rouge. "While work in underground is quite similar to working overhead distribution, each installation in this relatively new field offers a challenge. We are always running into situations in this area which Gulf Staters have not previously encountered."

COMPANY engineers and forecasters agree that many more URD installations lie ahead. While many of the facilities used for these installations have not yet stood the test of time, the advantages of running distribution lines to residences underground are obvious.

Commenting on the mounting public interest in URD, L. V. Dugas, vice president and general sales manager, said "We have known for some time that beautification, reliability and safety were obvious advantages of underground service.

"To date our experience in this area has been very satisfactory. We are exploring every facet of new developments in the field and we are moving as fast as most utilities in this country in the area of underground service."

The Company is moving ahead in URD as rapidly as developments in the field will allow. If developments in this field continue to occur as they have over the past few years, considerable headway should be made toward making underground service to a new residence almost as inexpensive as overhead service.

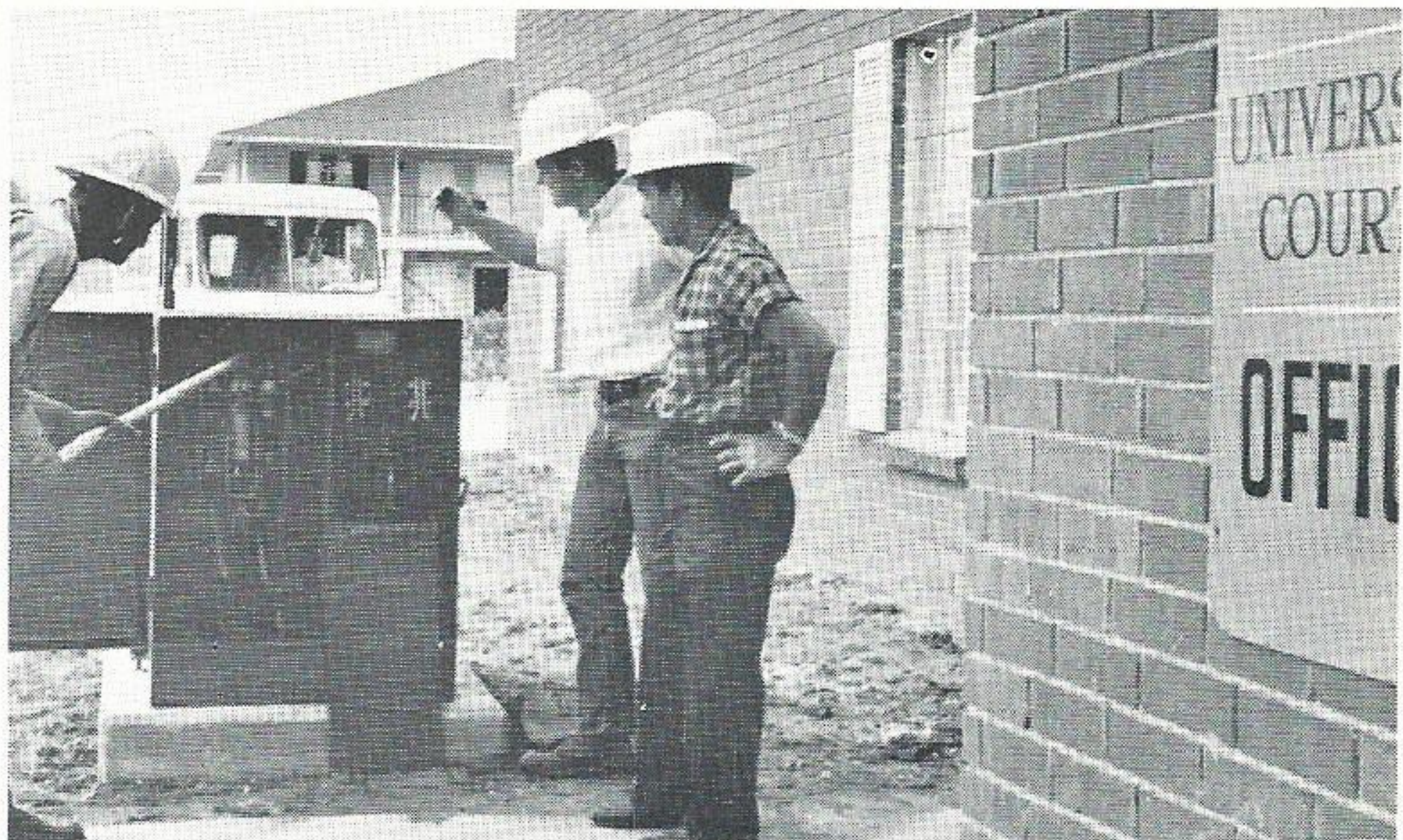
"In our promotion of underground we must, however, consider safety, reliability and our rate structure," Mr. Dugas emphasized. 



John Hobbs and M. C. McCormack, substation foreman, tape a connection in a vault beneath one of Baton Rouge's busiest streets.



Cable is laid for underground service to residence in Beaumont area.



Underground crew checks a fuse in a transformer at one of many new apartment complexes served underground.

Roses Among

A Salute to GSU's Power Plant Ladies

WOMEN office workers the world over are characterized by television writers and cartoonists as light-headed, blabbering individuals who pay much more attention to the hair style of the girl at the next desk than to their business. They are pictured as attendants at an endless string of coffee breaks and baby showers.

Anyone who has ever worked in an office knows that the above is simply not true. The working female winds her way home each night with tired fingers and feet; the former, a result of pounding a typewriter for eight hours, the latter from running a thousand errands.

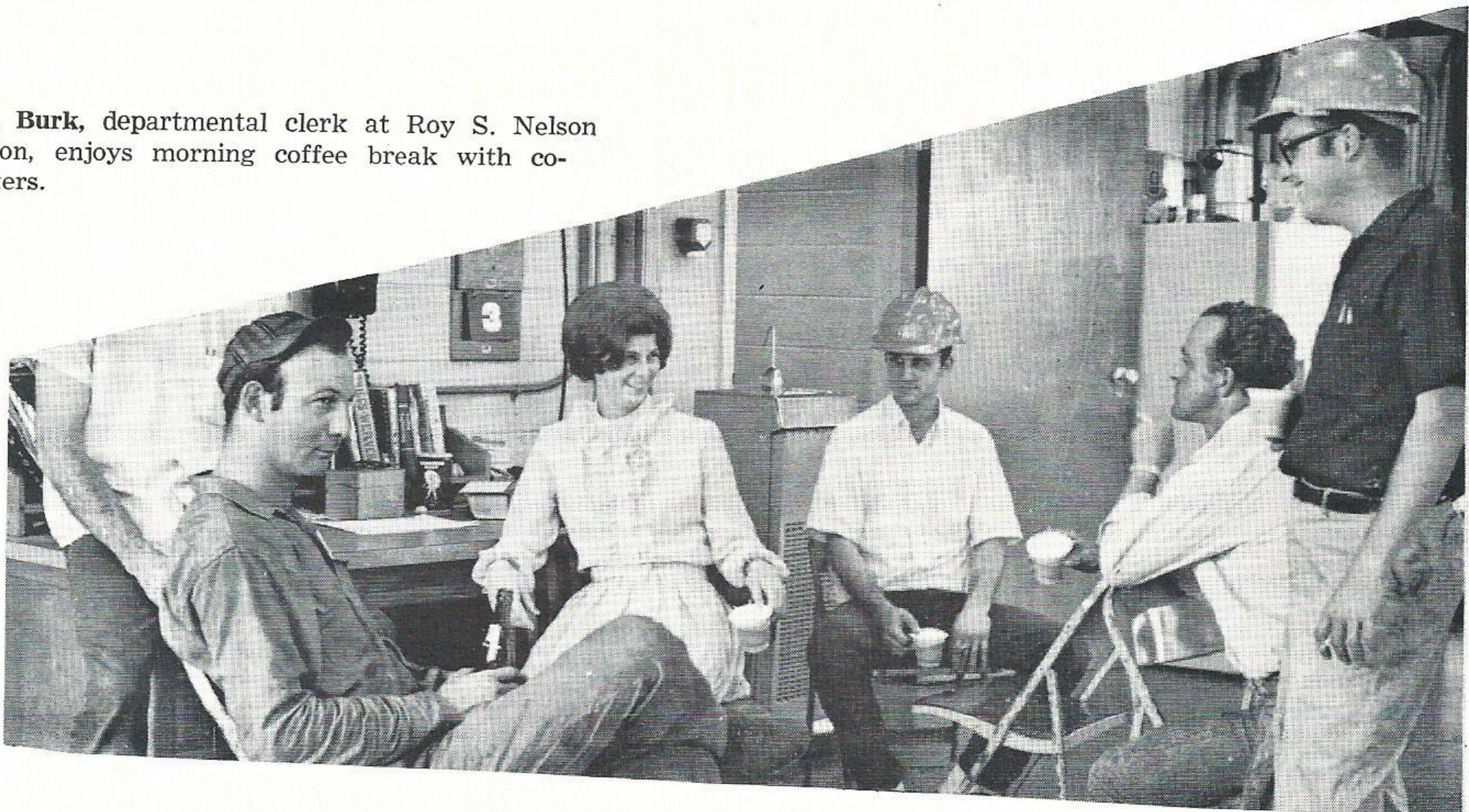
Still, the mystique hangs on as it probably will for so long as women do office work.

For at least three ladies in our Company, the mystique is an obvious mistake. They certainly don't jabber about triviality with the girl at the next desk and it is highly doubtful that they will ever attend a shower for one of their fellow workers. Each of these ladies "man's" the clerical chores at one of GSU's power plants. Each spends eight working



Dora Landaiche, departmental clerk at Willow Glen Station, takes one of the many calls she receives daily. Dora likes being "the lady at Willow Glen."

Jean Burk, departmental clerk at Roy S. Nelson Station, enjoys morning coffee break with co-workers.



The Thorns

hours daily behind the gates of a power plant with between 50 and 60 men.

While these three are not the only ladies working at power plants in the system, and while they are not the only Gulf Staters who work with the opposite sex primarily, they are unique in that they are so outnumbered. Dora Landaiche, departmental clerk at Willow Glen Station near St. Gabriel, La., calls the 46-men-to-one-woman odds there an "occupational hazard."

"ILL admit I had some reservations about coming to work here with no girl to talk to all day, but after eight years I think I'd find it harder to work with women simply because I'm so used to working with men," notes Dora.

"I think they try hard to make me feel comfortable. They're all very polite and someone is always bringing me flowers or if the men go hunting or fishing I always get my share of the bounty."

The youngest of the three "roses among the thorns" is Jean Burk, departmental clerk at Nelson Station near Lake Charles. At present she is single but wedding bells will ring for her August 3.

"In the year that I've worked at Nelson I've gotten used to not having a girl to go to lunch or coffee with. I like it much better than working with women," says Jean.

Jean says that from time to time she will also have to play nurse for a cut finger or a headache. "I keep band aids and aspirin in stock at all times. I guess the men feel it's part of my job and that's all right with me. Of course if something serious happens they go to a doctor right away."

Jean says that her biggest problem is with teasing. "Someone is always asking if the picture on my desk is my fiance or my little brother."

All three girls agree that there are advantages to being the only girl on the job. They cite petty jealousies which will sometimes crop up among women in an office and the competition to be the



Kathy Fuller, departmental clerk at Sabine Station, steps out of the office for a little sunshine during lunch. The giant boilers in the background offer an interesting contrast to her femininity.

best dressed female on the floor as being pleasantly absent when you're the only girl around.

"ABOUT the only thing I find different in working here and any other place is that the men treat me as though I were the only girl in the world, and anyone will tell you there's nothing wrong with that," says Kathy Fuller, departmental clerk at Sabine Station near Bridge City, Tex. "I don't know what I'd do in an office full of women after five years out here."

Kathy is married and the mother of a 5-year-old son.

Kathy says that the men are all very nice to her. "Last year they helped me catch a 5¾ pound redfish in the discharge canal. I think they were more excited than I was."

All agree they wouldn't trade places with anyone. When Dora is called upon to remove a bit of dust from an eye or when Kathy is asked to suggest the style dress that would best suit someone's wife or when a wife calls and asks Jean to remind someone that he has a dental appointment, they don't mind. They are just Gulf Staters doing that little bit extra to make our Company one of the finest in the world.



Jack F. Worthy Is Named Assistant to Vice President

Jack F. Worthy, formerly director of community relations in Baton Rouge has been named assistant to the vice president, Baton Rouge. The promotion became effective June. 1.

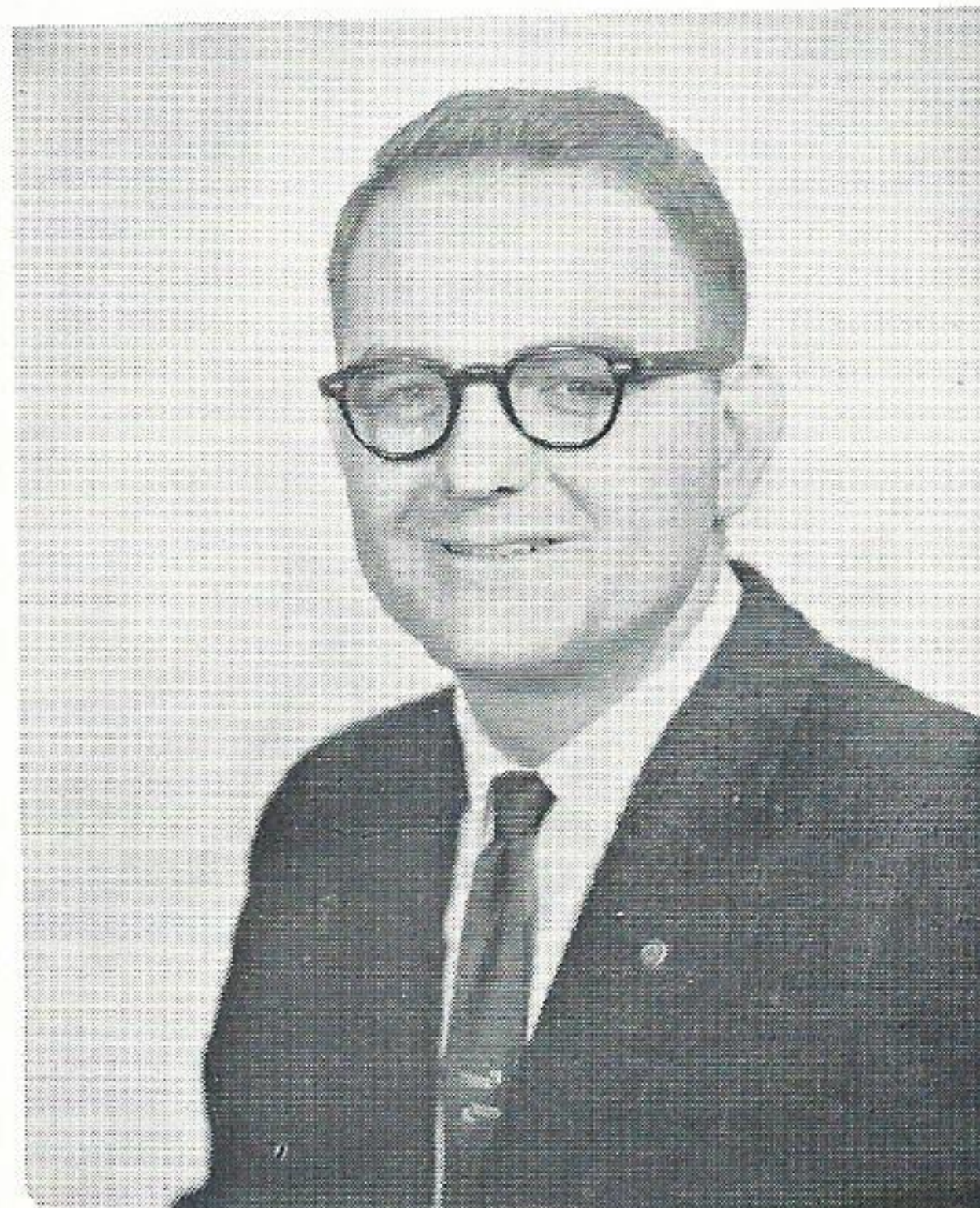
In addition to his present duties, Mr. Worthy, in his new capacity, will assume responsibility for gas operations in the Baton Rouge area.

A graduate of the LSU School of Journalism, Mr. Worthy joined the Advertising Department in Beaumont in 1956, transferring to Baton Rouge later that year as assistant advertising director. In 1966, he was promoted to his community relations position.

Long active in community affairs, he

is presently chairman of the Governmental Affairs Committee of the Baton Rouge Chamber of Commerce and past chairman of the Chamber's Americanism Committee. He is past president of the Baton Rouge Advertising Club, former president of the Inter-Civic Club Council, and was 1966 chairman of the public information council of the United Givers drive.

He has also been secretary-treasurer of the Public Relations Society of America's Baton Rouge chapter, vice chairman of the Louisiana Manufacturer's public relations committee, and is active in the Junior Achievement program.



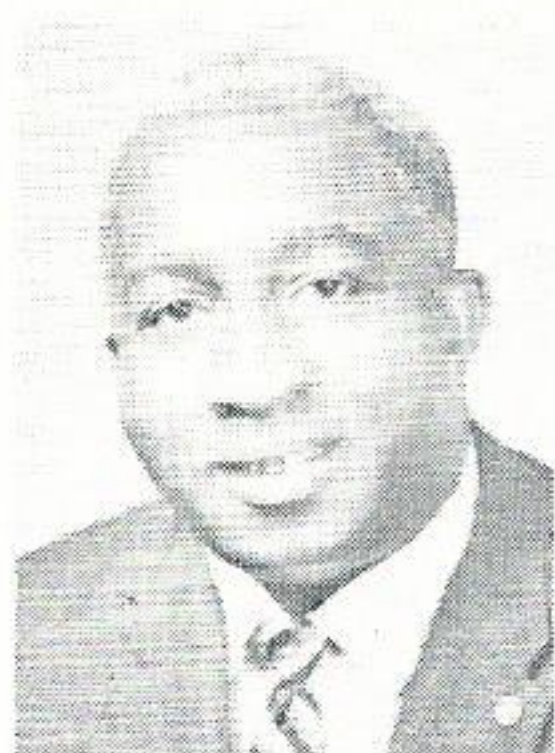
Jack F. Worthy

SERVICE AWARDS FORTY YEARS



H. E. Mortimer
Executive
Beaumont

TWENTY YEARS

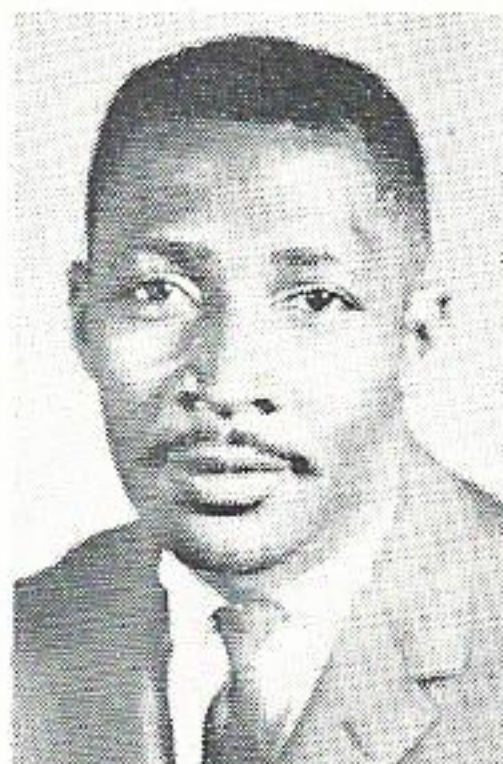


Bobbie Flanagan
Treasury
Beaumont

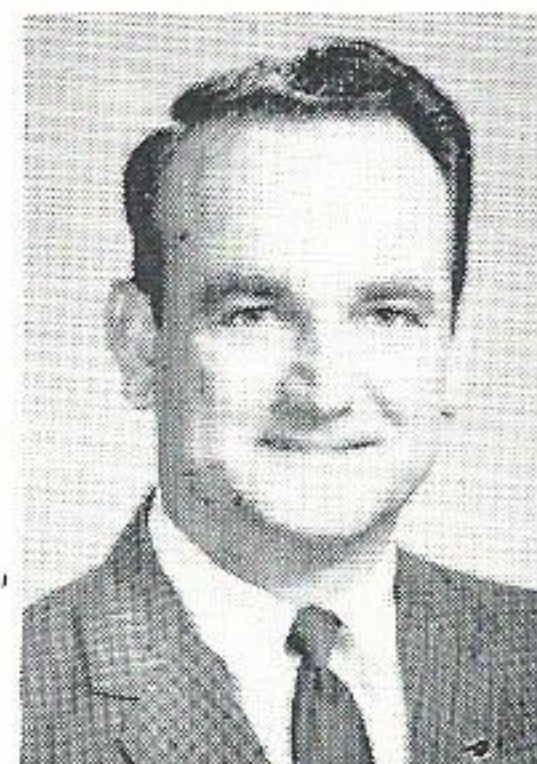


Harold W. LaFosse
Treasury
Beaumont

TEN YEARS



Demas Martin, Jr.
Distribution
Baton Rouge



Richard Peterman
Rates &
Depreciation
Beaumont



H. L. Hammack
Production
Beaumont

Two Retire July 1 From Louisiana Sta.

Two longtime members of the Gulf States family will retire from Louisiana Station in Baton Rouge July 1.

Ben Gray, Jr. and Lawyer Fields, both of the Production Department, are completing a combined total of 77 years service to the Company.

Mr. Gray joined GSU in 1928 in Beaumont. After two years he transferred to Louisiana Station.



Ben Gray, Jr. "Probably the greatest change I have seen in my lifetime are all the advances that make the worker's life so much easier," he said. "You just can't compare working today with 41 years ago."

A native of Erwinville, La., Mr. Gray attended school in the Baton Rouge area. He served in the U. S. Army during World War II.

Mr. and Mrs. Gray have one daughter. She is Mrs. Mary Smith of Baton Rouge. The family attends St. Peter Baptist Church in Erwinville.

As for retirement plans, Mr. Gray says that his greatest love is fishing and that he plans quite a lot of that in the months ahead. He also said he would like to visit relatives in Beaumont and Oakland, Calif.

Summing up after 41 years Mr. Gray says "Gulf States was all right when I joined it and it's all right with me now."

Mr. Fields is a native of Tunica, La. he attended school in the Fullerton, La. area.



Lawyer Fields
Baton Rouge.

He joined the Company at Louisiana Station in 1931.

Mr. Fields is married to the former Mary Jane Jackson of

Transferred to Port Arthur

George L. Irvin, III Promoted To Division Accounting Supervisor

George L. Irvin, III, has been transferred from Beaumont to Port Arthur and promoted to division accounting supervisor.

Formerly supervisor of stores accounting in the System Treasury Department, he replaces James P. Pevoto who retired from the Port Arthur office June 1.



George L. Irvin, III native joined GSU upon his discharge from the Army in 1957.

Irvin is a graduate of Beaumont High School and Lamar Tech. He served in the U. S. Army in Germany from 1954 to 1957.

The Robstown, Tex.

He held several accounting and purchasing positions before being named assistant supervisor of stores and stores accounting in May of 1965, and then being promoted to supervisor of stores accounting in July of that year.

Mr. Irvin is married to the former Jo Ann Ruff of Beaumont and they have three children, George IV, 11, Julie, 8, and Melissa, 5.

He is a member of the Beaumont Mental Health Association, Lamar Ex-Students Association and he is vice president of the Beaumont chapter of the Sigma Nu Alumni Association.

He is also youth director at St. Marks Episcopal Church in Beaumont.

New Office at Westlake Opens



Residents of the town of Westlake, La., won't have to drive to Lake Charles anymore to pay their electric bill because this new local office was opened there June 3. Staffing the new facility at 524 Miller Ave. are Bessie Esthay, local office clerk, and Al Trouville, serviceman. A grand opening was held June 12 with refreshments and souvenirs for many friends of GSU who dropped in.

At Nuclear Science Symposium

GSU, Atoms and Youth

"Engineering serves no goal independent of the society in which it exists," according to Dr. W. R. Upthegrove, chairman of the engineering department at the University of Texas.

"Engineers must confront problems important to the human well being of society," he said. "Modern engineering is truly one of the major forces that can move our society toward a better world for all men."

Dr. Upthegrove was one of several speakers at the eighth annual Texas Nuclear Science Symposium for High Schools held at the university June 4-7.

The symposium is sponsored by the university and the Texas Atomic Energy Research Foundation, which is composed of Gulf States and the nine other investor-owned electric utilities in Texas.

Our Company annually sends a group of students and teachers that represent

the cream of the crop in high school math, science and engineering to the meeting. This year GSU paid travel expenses and room and board costs for 35 participants from schools in our Texas service area.

Participants also met in small group discussions with the speakers and viewed films on nuclear energy.

In addition, they toured the research laboratories at the university where scientists and graduate students are conducting experiments sponsored by TAERF on controlling the nuclear fusion reaction, which is the power of the hydrogen bomb, for peaceful purposes such as the generation of electricity.

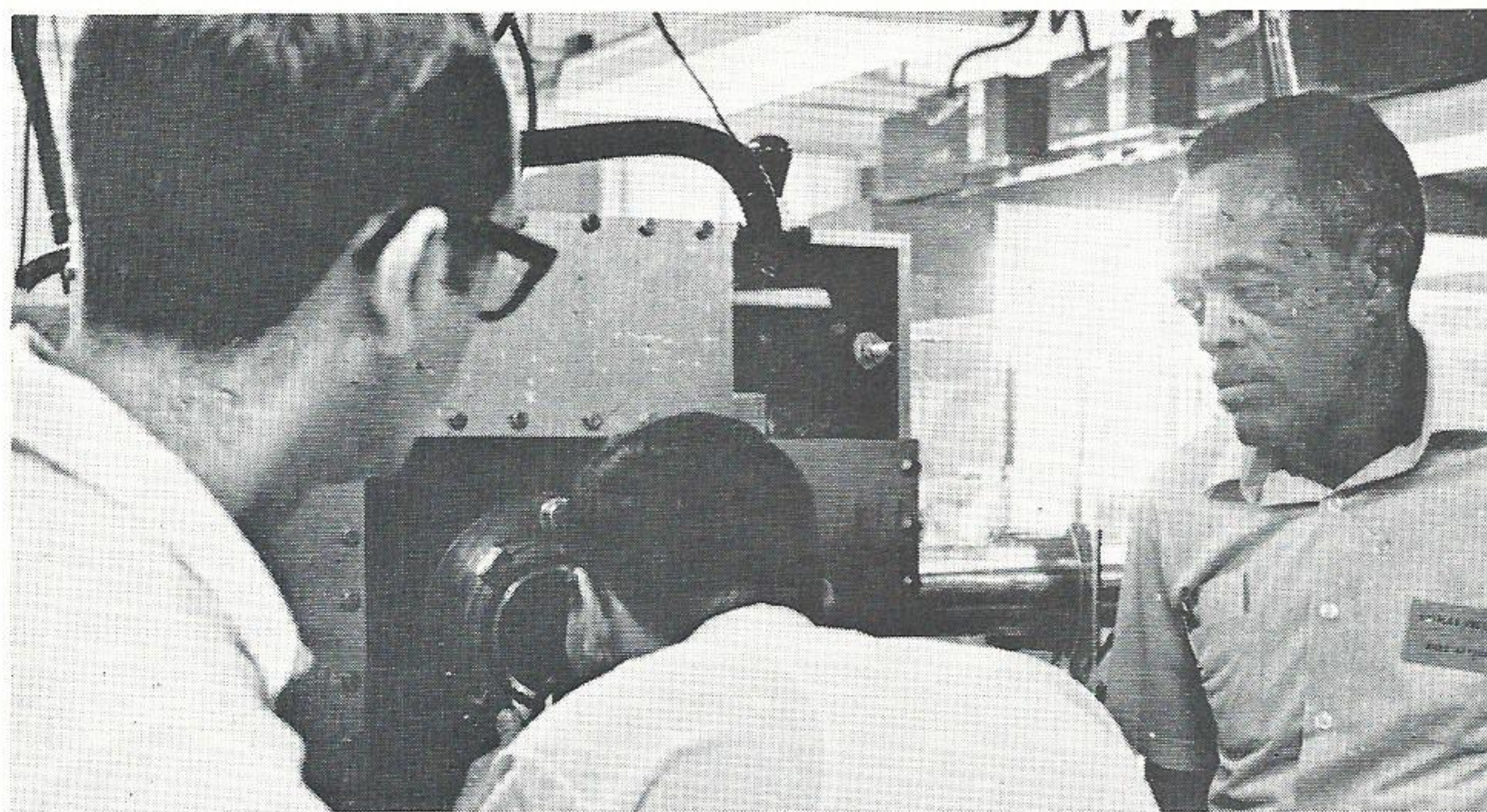
Rep. Craig Hosmer of California, ranking minority House member on the Joint Committee on Atomic Energy, closed out the symposium with an address to the participants.

The students were selected after careful screening by high school officials, and their grade averages hover in the "straight A" classification. They do not, however, represent "egg-heads," but rather are all-around students with a wide range of participation in extra-curricular activities, school organizations and sports.

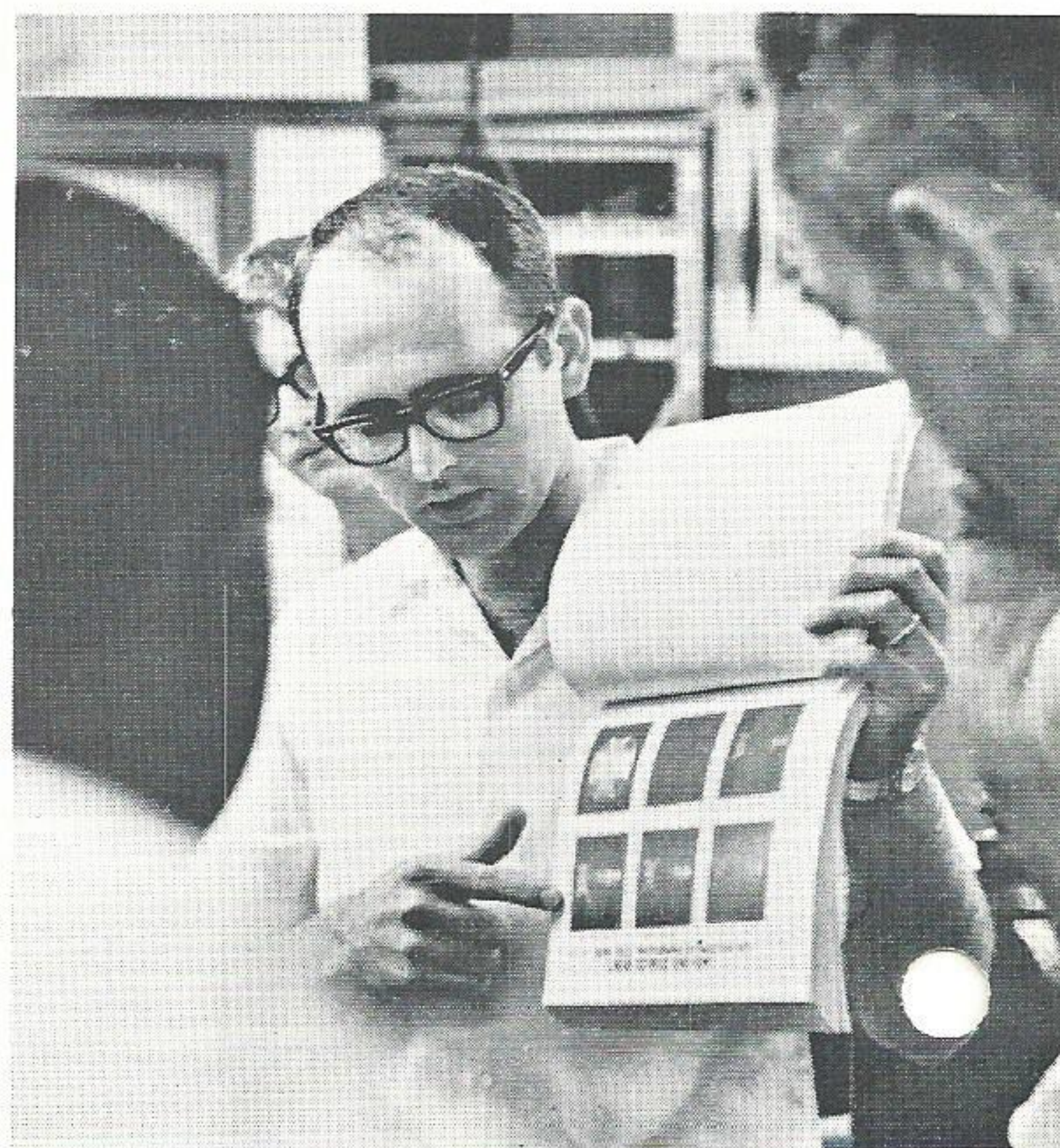
Choice of professions included such diverse occupations as marine geologist, biologist, medical technician, mathematician, teacher, research, physicist working with laser beam experiments, chemist, pathologist, computer analyst, teacher and mechanical, chemical and electrical engineer.

The list of awards and honors won by the students is too long to mention here, but just a sampling includes "Outstanding Teenager of America," "Who's Who Among American High School Students," "Junior Achievement President of the Year," "John Philip Sousa Band Award," "National Merit Scholarship Finalist," and many winners in U.I.L. meets and science fairs.

Who says today's teenagers are going to the dogs?



Participants at the Texas Nuclear Science Symposium tour the research laboratories at the University of Texas where scientists are trying to control the nuclear fusion reaction for peaceful uses such as the generation of electricity. Shown here is the "plasma gun" equipment which is sponsored by GSU and the nine other investor-owned electric utilities in Texas. Purpose of the experiment is to create a gaseous mixture known as plasma and get it into the machine. Other experiments are concerned with containing the plasma long enough for it to be ignited at temperatures hotter than the sun to start the chain reaction. At right is Jerry Ligon, Ph.D. candidate, displaying pictures of the plasma being created in the machine. GSU sponsored the student and teacher in the foreground from Port Arthur Lincoln High School. Above, a participant peers into the plasma gun equipment.



Gulf Staters in the News

- **Norman R. Lee**, vice president for the Baton Rouge Division, has been named to the board of directors of the Baton Rouge Area Chamber of Commerce.
- **Frank Robinson** of the Huntsville office spoke on the topic "Church and State" to some 210 representatives from 50 churches in the Huntsville area April 16. The talk was given before the "Men's Meeting" of the First Methodist Church of Huntsville.
- **R. A. "Dick" Landry**, supervisor-lighting sales, was elected a delegate to the Republican State Convention in Corpus Christi June 11 after being elected Republican Chairman of Precinct 2 in Jefferson County during the largest Republican Primary vote of the county's history. Mr. Landry was also recently elected secretary of the Sabine-Neches Chapter of the L.S.U. Alumni Association.
- **W. A. Thomson**, supervisor of commercial and industrial sales, Beaumont, was elected vice president of the Petroleum Electric Power Association at the group's 40th annual conference in Beaumont June 3-4.
- **L. V. Dugas**, vice president and general sales manager, has been elected chairman of the advisory finance committee of the Texas Farm Electrification Committee. Mr. Dugas accepted the post at the May 28 meeting of the committee held on the Texas A&M campus.



Thirteen members of the Denham Springs Chamber of Commerce including Richard Smith, local superintendent, were guests at our Company's Willow Glen Power Station on May 23. The plant visitation was part of the group's day-long tour of the industries in the Geismar area, south of Baton Rouge. After a brief welcoming by Norman R. Lee, Baton Rouge Division vice president, and C. E. Calvert, Willow Glen superintendent, the group was shown through the plant. Above Edwin Sims points out facilities for the visitors.

Krouse Named Engineer For Lafayette, Fuselier Made Lafayette Sales Supervisor

Emile S. "Dick" Krouse, formerly industrial engineer in the Baton Rouge Gas Department, has been named engineer for the Lafayette Division and Virgil Fuselier, formerly commercial sales representative in the Lake Charles Division, has been promoted to sales supervisor at Lafayette.

The new assignments became effective June 16.

A native of Springhill, La., Mr. Krouse graduated from Louisiana State University with a degree in agricultural engineering. He was employed in 1951 as a farm representative in Baton Rouge. In 1953 he was

Emile S. Krouse promoted to agricultural engineer and in 1956 he became area development engineer. In 1967 he was assigned to GSU's Gas Department in Baton Rouge.



Mr. Krouse is a registered professional engineer in the state of Louisiana and is a member of the Louisiana Engineering Society and Baton Rouge Chamber of Commerce.

He is married to the former Audrey White of Baton Rouge and they have three children; Gary, 13, and 11-year-old twins, Glynn and Lynn.

Mr. Fuselier is a native of Sweetlake, La. He received a business education degree from McNeese State College in 1959 and joined the Company in Lake Charles in 1960 as a residential sales representative. He was promoted to commercial sales representative in 1965.

Mr. Fuselier is married to the former Jackie Hinman of Lake Charles and they have two sons, Grady and Drew.



Virgil Fuselier

LETTERS

From employees, customers and friends of GSU

CONROE

Editor's Note: The following letter appeared recently in the "Letters to the Editor" column of the Montgomery County Eastex Progress.

Open letter to Gulf States Utilities

The People of New Caney and Porter wish to let it be known that the generous efforts of Wayne Allen and J. W. Jackson are appreciated immensely. Since coming to our community they have done much above and beyond their regular duties to make the area a better place to live. They have answered our distress calls eagerly day and night and have cheerfully assisted in many community projects. A big thanks to you Gulf States, for picking these men to serve us.

CLEVELAND

Dear Mr. Brinkley:

I am retiring from teaching at the end of this school year and I want to express to you, and the other workers at the Gulf States Utilities Company, my sincere appreciation for the many courteous considerations you have given me in my work at the Shepherd Home Economics Department.

It is programs such as yours that have enabled us to do a better job in our teaching.

Thanking you again for past favors and wishing success for you and "Reddy" in the future.

Yours truly,

(Miss) Marion McMurrey

PORT ARTHUR

Dear Mr. Thompson:

Congratulations on your election as vice-president of the Petroleum Electric Power Association.

If at any time I can be of assistance to you in the future, please do not hesitate to call on me.

My sincere best wishes for a successful term.

Yours very truly,
Carl A. Parker
State Representative

JENNINGS

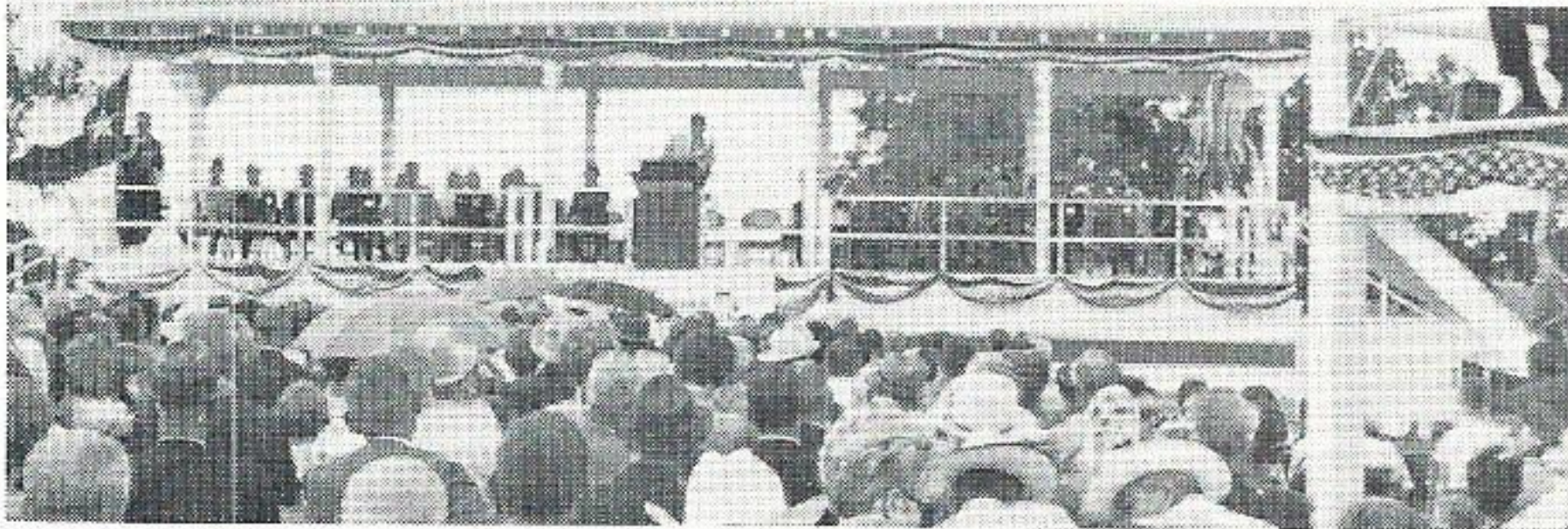
Dear Mr. Wagon:

In behalf of the fifth grade class and their sponsors, I would like to take this opportunity to thank you for everything that you did to make our field trip such a success. The children certainly enjoyed the day and learned much.

Again, thank you for your part.

Sincerely,
Barbara Litteral,
Fifth Grade Teacher

BIG DAY AT SOMERVILLE



May 17 was "D-Day" for hundreds of folks from the Somerville area who attended the gala festivities dedicating the new Somerville Dam and lake. U.S. Congressman Jake Pickle of Waco is on the speakers platform at left above. Gulf Staters in the audience included Somerville Mayor and Mrs. James Stout, Mr. and Mrs. Bob Lanier (he's operating superintendent of the Navasota Division) and Mr. and Mrs. Roy Hudspeth, who's Navasota district superintendent. After the speeches, the Stouts, Laniers, and Hudspeths enjoyed a picnic on the ground. Somerville Lake is in the background. At right are Navasotans Connie Winborn, sales supervisor, Charles Boring, sales representative and Joe McClelland, industrial sales engineer.

One Promoted, One Transferred In Port Arthur T&D Department

One promotion and one transfer became effective in the T&D Department at Port Arthur June 1.

Raymond T. Kearney, formerly division engineer, was transferred to the Standards Design Section in the Beaumont Engineering Design Department and James D. Watkins, was promoted from engineer to division engineer.

Mr. Kearney joined the Company in 1952. He has served as engineer in Lake



Raymond Kearney he became division engineer for the Port Arthur Division.

Mr. Kearney holds a BS degree in electrical engineering from Auburn which he received in 1949. During the Korean Conflict he was a member of the Alabama National Guard and was called to active duty with the U.S. Army for 16 months.

He is a registered professional engineer in both Texas and Louisiana. He also holds memberships in the IEEE and the Beaumont Chamber of Commerce.

A native of Mobile, Ala., he is married to the former Betty Gunthorpe of Mobile. They have four children. Julia Louise, 14, is a ninth grade student at Bishop Byrne High School, Mary Katherine, 13, is in the eighth grade at St. James Elementary, Raymond Thaddeus, 9, is in the fourth grade at St. James Elementary, and Clare Ann, 6, is a first grader at St. James Elementary.

The family attends St. James Catholic Church.

Mr. Watkins joined the Company in 1958 upon graduation from Louisiana State University with a degree in me-

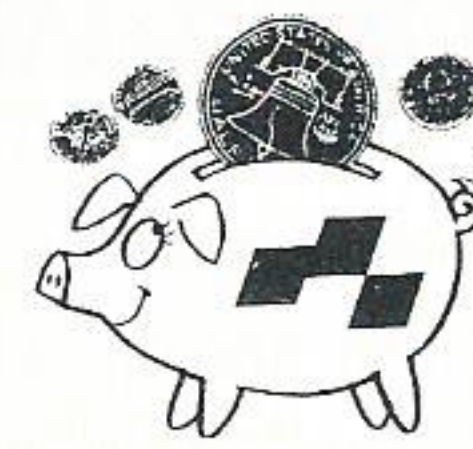
chanical engineering. He has served as electrical maintenance supervisor at Neches Station and he was made an engineer in the T&D Department at Port Arthur in 1964.



James D. Watkins attend the First Presbyterian Church in Port Arthur.

Watkins is a registered professional engineer in Texas and Louisiana and a member of the Lakeview Lions Club in Port Arthur.

He is a native of Hatchechubbee, Ala. and is married to the former Wanda Mene-tre of Covington, La. They have two children, Jamie Ann, 10, and James Jr., 8 and



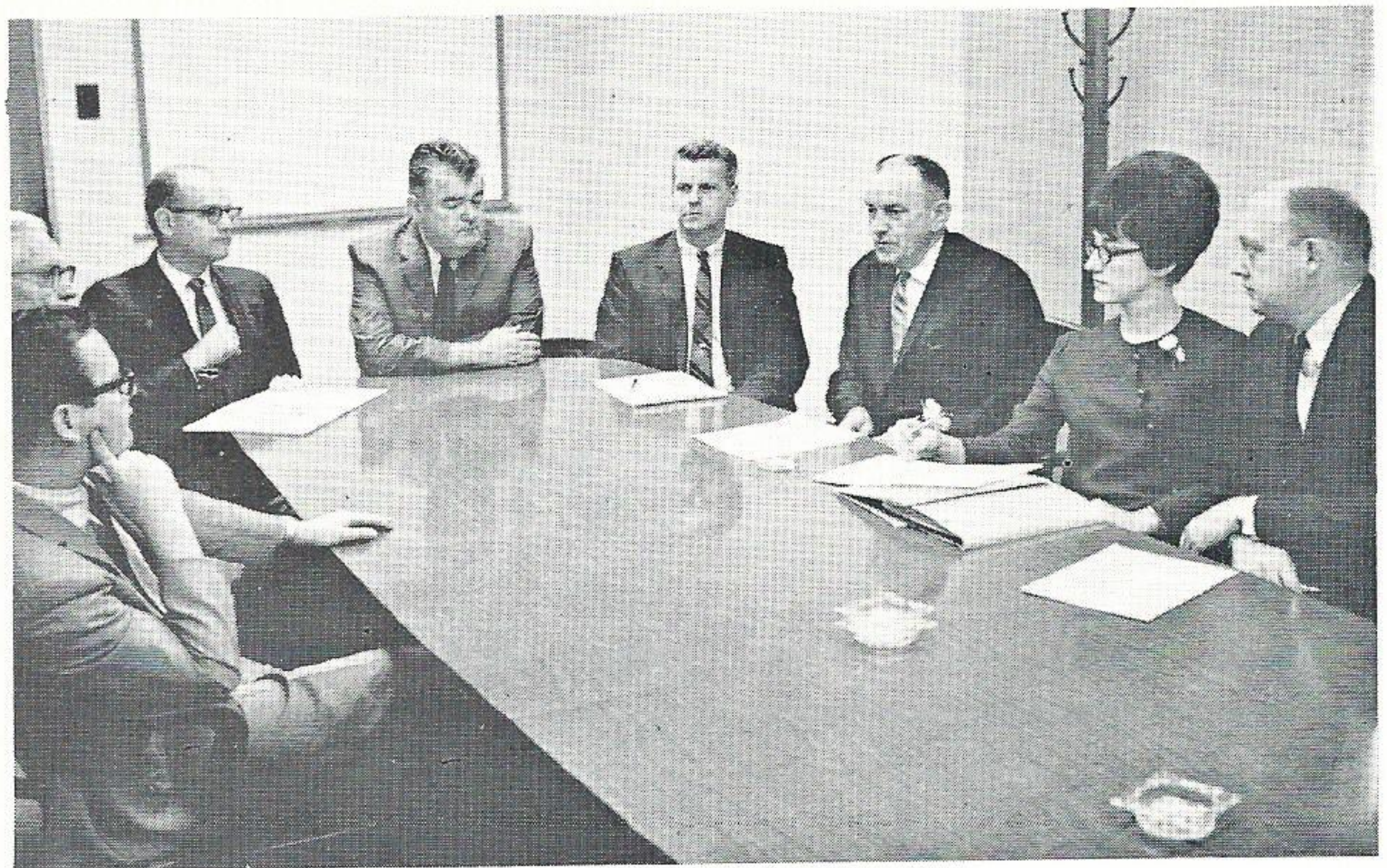
Thrift Plan

PURCHASES OF GSU stock made by the Trustee during June, 1968 covering employee deductions and Company contributions through May, 1968 were as follows:

2970 shares of Common stock at a total cost of \$71,680.50 or an average cost per share of \$24.135.

80 shares of \$4.40 preferred stock at a cost of \$5,541.55 or an average cost per share of \$68.27.

The Trustee also deposited \$23,606.76 with the Savings Department of the First Security National Bank of Beaumont.



Shown formulating plans for the annual Beaumont Homemakers Holiday, an electric living presentation co-sponsored by GSU and the Enterprise Co., are from left, Tim Gallagher, representing the Beaumont Downtown Merchants, V. P. Gayle, system superintendent of residential sales, Aubrey Sprawls, Beaumont Division sales superintendent, Clayton Lau, the Enterprise Co., Joe DeJean, residential sales promotion supervisor, Ralph Spafford, supervisor of residential sales for the Beaumont Division, Jo Ann Smith, home service advisor in Beaumont, and Herschel Mathews, system director of advertising. The event traditionally plays to capacity crowds for two consecutive days in Beaumont's Jefferson Theater. This year the program is slated for September 24-25.

One Promoted, Four Reassigned in Treasury Dept.

One was promoted and four received new assignments in the Treasury Department June 1.

Lyle P. Gerac, formerly administrative Accountant in the Budget, Financial and Regulatory Reporting Department was promoted to supervisor of accounts payable; John R. Long was changed from supervisor of accounts payable in the Accounting Operations Department to



supervisor of general accounts; Patrick M. Pierson was changed from supervisor of general accounts to supervisor of plant accounting; Grady M. Smith formerly supervisor of plant accounting was changed to supervisor of stores accounting; and Dennis Brennan, formerly administrative accountant in the Plant Accounting Department, was transferred to Budget, Financial and Regulatory Reporting.

Mr. Gerac joined the Company in 1964 as an accountant junior in General Accounting. He was transferred to the Financial and Regulatory Reports Section and promoted to administrative assistant shortly thereafter.

A native of Lafayette, La., he is a 1964 graduate of the University of Southwestern Louisiana there. He holds a BS degree in business management. He is a former U.S. Air Force officer.

Mrs. Gerac is the former Marie Louise Braud of Gonzales, La. They have two sons and a daughter. The boys are Philip, 3, and Patrick, 4 months, and the girl is Stephonie, 2.

Mr. Gerac is a member of the American Management Association. The family attends St. Ann's Catholic Church in Beaumont.

Mr. Long was employed in 1961 as an accountant junior in General Accounting.



He was recalled to active duty with the U. S. Army Artillery in 1961. Upon his return in 1962, he was reassigned to General Accounting. He moved to Plant Accounting in 1964 and he was made administrative assistant in the Accounting Operations Section (Accounts Payable) in 1967.

A native of Whitesboro, Tex., Mr. Long is a graduate of Austin College in Sherman, Tex. He is a member of the First Baptist Church of Beaumont, president of the Austin College Alumni of Beaumont, a member of the Southwest Basketball Officials Association, and the Vidor Lions Club.

He is married to the former Ann Jones of Beaumont. They have a boy and a girl. Karen is a first grader at Oak Forest, and Kenneth is 4.

Mr. Pierson has been with our Company since 1964 when he was hired as an accountant junior in General Accounting. He was made supervisor of general accounts in the Accounting Services Department (General Accounts) in 1966.



Although a native of Beaumont, he was raised in Baytown, Tex. He received his BBA degree in accounting from Lamar Tech in 1962 and he attended the University of Houston Law School.

Mrs. Pierson is the former Diane Younger of Beaumont. They have two children. Pamela is 5 and Patrick Jr. is

17 months. The family attends the First Methodist Church in Beaumont.

Mr. Smith joined our Company in 1952 as a customer accounting clerk. He was made a senior accounting clerk in 1953. Later that year he left for two years service with the U. S. Army.



Upon his return he was assigned to General Accounting and worked in IBM accounting before being named assistant plant accountant in 1962. He was made supervisor of plant accounting in 1966.

A native of Daingerfield, Tex., he was graduated from Lamar Tech in 1953 with a BS in general business. He is married to the former Nelda Baxley of Beaumont. They have one daughter, Glenda. The Smiths are members of the Pineburr Baptist Church in Beaumont where he is choir director.

Mr. Brennan, a native of Baton Rouge, received his degree in accounting from LSU in 1965. He joined our Company the same year as a junior accountant in General Accounts. In 1966, he was transferred to the Plant Accounting Section. He was promoted to administrative accountant in 1967.



Mr. Brennan is engaged to Patricia Ann Broussard of Beaumont.

He is a member of the YMCA, the Single Catholic Adults Association, The Beaumont Golf Association, the Beaumont Football Officials Association and the Beaumont Basketball Officials Association.

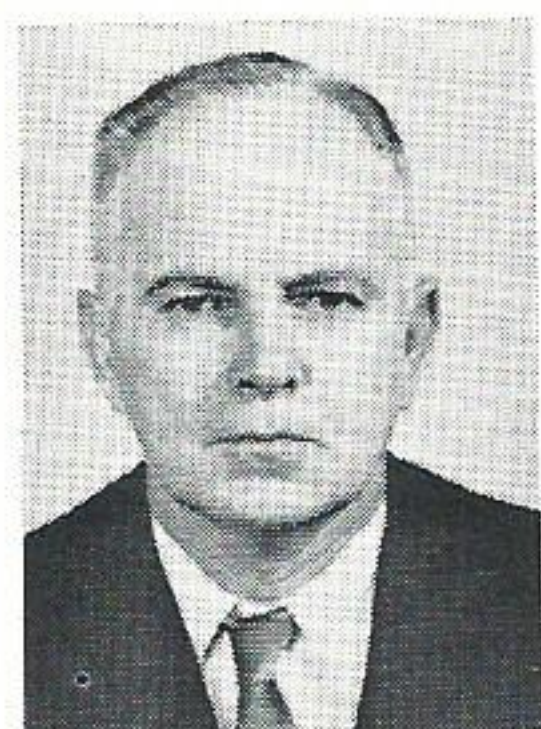
DeWoody Is Promoted, Trouard Transferred; In Sulphur Shifts

Edgar K. DeWoody, formerly serviceman first class at Sulphur, La., was promoted to utility foreman there and Jack P. Trouard, formerly line foreman at Lake Charles, was transferred to Sulphur, both effective June 1.

The moves came as a result of the assignment of two heavy-duty line crews to the Sulphur District. This became necessary because of the growing number of customers and services in the area.

A 20 by 40 foot metal pre-fabricated building is presently being modified to include air conditioned office space, a storage area and two line truck sheds at the Sulphur substation to house the crews and their equipment. The building was completed about June 10 and the two crews began operating out of Sulphur around June 15.

Mr. DeWoody joined the Company as an operator in the water department at Lake Charles in 1946, Later in the same year he became a helper in the T&D Department there and in 1955 he moved up to the post of lineman first class. He became a serviceman first class the next year.



Edgar K. DeWoody to the post of lineman first class. He became a serviceman first class the next year.

A Lake Charles native he is a graduate of Lake Charles High School. He served with the aviation arm of the U.S. Navy in the South Pacific during World War II.

He is married to the former Doris Savoie of Vidor, Tex. They have four children. Madelyn, 17, is a senior at St. Charles Academy, Janel, 16, is a junior at St. Charles Academy, Gregg, 13, is in the eighth grade at W. W. Lewis Elementary, and Stephen, 12, is in the

seventh grade at W. W. Lewis Elementary.

The family attends Our Lady Queen of Heaven Catholic Church in Sulphur.

Mr. Trouard joined our Company in 1947 as a helper in the Line Department at Lake Charles. He was promoted to lineman first class in 1952 and utility foreman in 1957. He made line foreman in 1965.



Jack P. Trouard A native of Lake Charles and a graduate of Lake Charles High School, he is married to the former Doris Drummond of Baton Rouge. They have four children, Brent, Brad, Ben and Barrie.

The Trouards are members of the University Methodist Church of Lake Charles and he has been working in the local Little League baseball program for the last eight years. He is now a team manager.

Members of the crews are Mr. Trouard, line foreman; Mr. DeWoody, utility foreman; Ed Barnes, Travis Fox and Harry Henry, all first class lineman; Wayne Cloyd, truck driver; and James Barrett, Jr., and Charles W. Ogea, helpers.

Mr. Trouard, two linemen, a truck driver and one helper will form a five-man crew and will operate a new conventional line truck. A 34-foot derrick has been ordered for the truck and when mounted later this year will make the truck the most modern and efficient piece of equipment available for line work.

Mr. DeWoody, one lineman and one helper will form the three-man crew and will use a 42-foot aerial basket line truck.

C. M. DeCuir Promoted, Transferred To Conroe

Charles M. DeCuir, formerly residential sales representative in the Beaumont Division, has been transferred to Conroe and promoted to supervisor of area development.



Charles M. DeCuir The promotion is effective June 16. Mr. DeCuir, a native of Port Arthur, attended Bishop Byrne High School. He graduated from Lamar Tech with a BBA degree in marketing in 1961. After completing a tour of duty with the United States Coast Guard, he joined Gulf States in Beaumont in 1962.

Mr. DeCuir has been a member of the American Marketing Association. He is married to the former Linda Oates of Port Arthur and they have a daughter, Edith Christine.

The DeCuirs will move to Conroe shortly.

Four Reassigned

Continued from Page 2

to Baton Rouge in 1965 and was promoted to supervisor of commercial sales.

A native of Mt. Pleasant, Tex., he is married to the former Gretchen Elkins of Lake Charles. They have two daughters; Jennifer Grayson and Rebecca Anne.

Mr. Loggins is an electrical engineering graduate of the University of Texas. The native of Winonia, Miss., joined GSU in 1958 and was assigned to an engineering position in the Navasota Division. He was transferred to Baton Rouge in 1960 as an electrical engineer at Louisiana Station and later moved to Willow Glen Power Station at St. Gabriel, La., in the same position. In 1964 Mr. Loggins was reassigned as an industrial sales engineer in the Baton Rouge Division.

He is married to the former Patricia Smith of Hattiesburg, Miss. They have four children. They are Cindy, 11, Martha, 10, Russell, 8, and Sharon, 7.

Retiree C. C. Lusk Dies At Dayton, Tex.

Funeral services for Curtis C. Lusk, retired local superintendent at Dayton, Tex., were held at 4:30 p.m. June 1.

Mr. Lusk died at 5:30 p.m. in the Dayton Memorial Hospital.



Curtis C. Lusk a serviceman in 1936. In 1940, he was moved back to Liberty and in 1943 he again went to Dayton. He was named local superintendent there in 1946.

He was a member of the Methodist Church and a past director of the Rotary Club.

He is survived by his wife Mrs. Grace Lusk of Dayton; two sons, Jimmy Lusk of Beaumont and Tommy Lusk of Dayton; two brothers, Jimmy Lusk of Trumph, La., and John Lusk of Dayton, Ohio; two sisters, Mrs. Madian Bryson and Mrs. Audie Wells, both of Channelview and four grandchildren.

A veteran of more than 34 years of service to the Company, Mr. Lusk retired in 1962. He joined GSU in 1928 in Liberty, Tex. He was transferred to Dayton as



Sit-in? Teach-in? Lie-in? no it's a Bake-in! Some 50 high school age girls held the latest in "in" things at the Port Arthur Division office June 12-13—a Bake-in. Some 300 cans of chocolate-chip cookies were baked and packaged for mailing to servicemen in Viet Nam. Home service advisors assisted the girls in their good will gesture. Above, Becky Jones, (right) the Port Arthur home service advisor who came up with the idea, helps two of the bakers remove a hot pan of cookies.

Robert R. Floyd Retires July 1 From Louisiana Station in B.R.

Robert R. Floyd, water plant operator, retires from Louisiana Station after 25 years of service July 1.

A native of Gloster, Miss., Mr. Floyd



attended school in the Gloster area. He joined the Company in 1943 as a helper at Louisiana Station and worked his way up through the positions of auxiliary operator

Robert R. Floyd and turbine operator before being made plant operator in 1945.

Mr. Floyd, a part time gardener at home, says he will spend much of his time after he retires in his vegetable garden. He plans to move to Zachary, La., soon after retirement. He is also quite a fisherman but he says he likes to confine this activity to private, stocked ponds which several of his friends maintain.

Mr. Floyd served in the U.S. Army during World War II.

He attends Gonzales Baptist Church in Gonzales, La.

Chairman Richard To Represent SPP On National Electric Reliability Council

Board Chairman Richard was recently chosen to represent the Southwest Power Pool on the newly formed National Electric Reliability Council.

Primary purpose of the council, made up of twelve regional power coordinating groups, will be to coordinate on a national basis the planning and operation of interconnected electric systems in the interest of reliability of electric supply.

Headquartered in Little Rock, the Southwest Power Pool is made up of 23 utilities supplying power requirements

to some 3,595,500 customers (or a population of approximately 14 million) in a 300,000 square mile area of Nebraska, Kansas, Oklahoma, Arkansas, Louisiana and parts of Missouri, Texas and Mississippi.

Membership of the twelve regional planning and "power pool" groups includes 174 utilities which serve more than 61 million electric customers in 48 states and Canada and operate generation and transmission facilities with a combined capacity of 269 million kilowatts.



Welcome Aboard!

Sonja B. Kieschnick, Dept Clerk, Beaumont.

Tommy Thompson, Helper, Beaumont.

Josephine O. Braquet, Clerk, Beaumont

Mary S. Tindall, Clerk, Beaumont.

Amanda S. McGrath, Clerk, Beaumont.

Dean J. Reddix, Laborer I, Orange.

Julia B. Gore, Local Office Clerk, Silsbee.

Ronald E. Shuff, Engr. Helper, Beaumont.

Jerry C. Davis, Engr. Helper, Beaumont.

Billy J. Kemp, Engr. Helper, Beaumont.

Thomas H. Weir, Operator's Helper, Brdg. City.

Ronald G. Hyde, Helper, Pt. Arth.

Stanly C. Smith, Helper, Pt. Arth.

Garry A. Lange, Helper, Nav.

Sandra D. Stubblefield, Clerk, Clevel.

George W. Lovell, Jr., Meter Reader, Huntsville.

Kenneth D. Hite, Operator's Helper, B. Rouge.

Melvin F. White, Operator's Helper, B. Rouge.

Gerald W. Cook, Operator's Helper, B. Rouge.

David C. Netherland, Mechanic's Helper, Baton Rouge.

Larry A. deVeer, Mechanic's Helper, Baton Rouge.

William M. Yoches, Mechanic's Helper, Baton Rouge.

Arden Knobbe, S/Sta Operator, Baton Rouge

Ernest E. Opitz, Jr., Helper, Baton Rouge

Clovis R. Collins, Helper, Baton Rouge

Charles W. Rohner, Helper, Baton Rouge

David A. Craig, Helper, Baton Rouge

Kenneth W. Miller, Helper, Baton Rouge

James L. Maloney, Helper, Baton Rouge

Emily G. Geddes, Dept Clerk, Baton Rouge

John Telfrey, Engr. Helper, Baton Rouge

Ronald A. Causey, Helper, Den Springs

Maurice A. Brown, Helper, Den Springs

Henry U. Newchurch, Helper, Port Allen

Joseph Patterson, Helper, Baton Rouge

Albert Badie, Laborer I, Baton Rouge

Larry A. James, Laborer I, Baton Rouge

Andrew Gibson, Meter Reader, Baton Rouge

Jacqueline H. Bates, Clerk, Baton Rouge

Mary A. Stephens, Clerk, Baton Rouge

Claudette S. Brown, Clerk, Baton Rouge

Lenford N. Whitaker, Helper, Lake Charles

Johnnie L. Pryor, Helper, Lafayette

Marlin R. Beard, Helper, Jennings

Willie E. Miller, Helper, Jennings

Ramsey Jones, Laborer I, Lake Charles

Bessie A. Esthay, Clerk, Westlake

Ellie Prejean, Labor Foreman, Beaumont

A. F. Gager, Relay Foreman, Beaumont

C. M. Scott, Mgr-Pt Arth Division, Port Arthur

Walter W. Pharr, Control Opers Foreman, Bridge City

Marguritte C. Landry, Clerk, Gonzales

A. A. Adams, Line Foreman, Jennings

Mary H. Dodd, Dept. Clerk, Beaumont

Gloria C. Gordon, Dept. Clerk, Beaumont

Vivian A. Gibbs, Stenographer, Beaumont

Joan A. Duplant, Stenographer, Beaumont

Candace C. Wilson, Dept. Clerk, Beaumont

Darlene J. McCauley, Key Punch Operator, Beaumont

David C. Thornton, Communication Serviceman, Beaumont

Terry N. Thomas, Helper, Beaumont

Teresa J. Bryan, Clerk, Beaumont

Frances M. Alexander, Clerk, Beaumont

Neva G. Risener, Clerk, Orange

Alphonse L. Tardif, Engr. Helper, Beaumont

Sharon S. Whitman, Dept. Clerk, Beaumont

Dolores W. Hayes, Dept. Clerk, Beaumont

Malcolm E. Smith, Engr. Helper, Beaumont

James G. Chesson, Helper, Port Arthur

Minos W. Dubois, Meter Reader, M-County

Reddi Zuips



"Tough day?"



"Female voice? What female voice, dear?"



"Well, that makes me 8 up on you - - yes, sir, there's nothing like playing with a salesman with brains!"



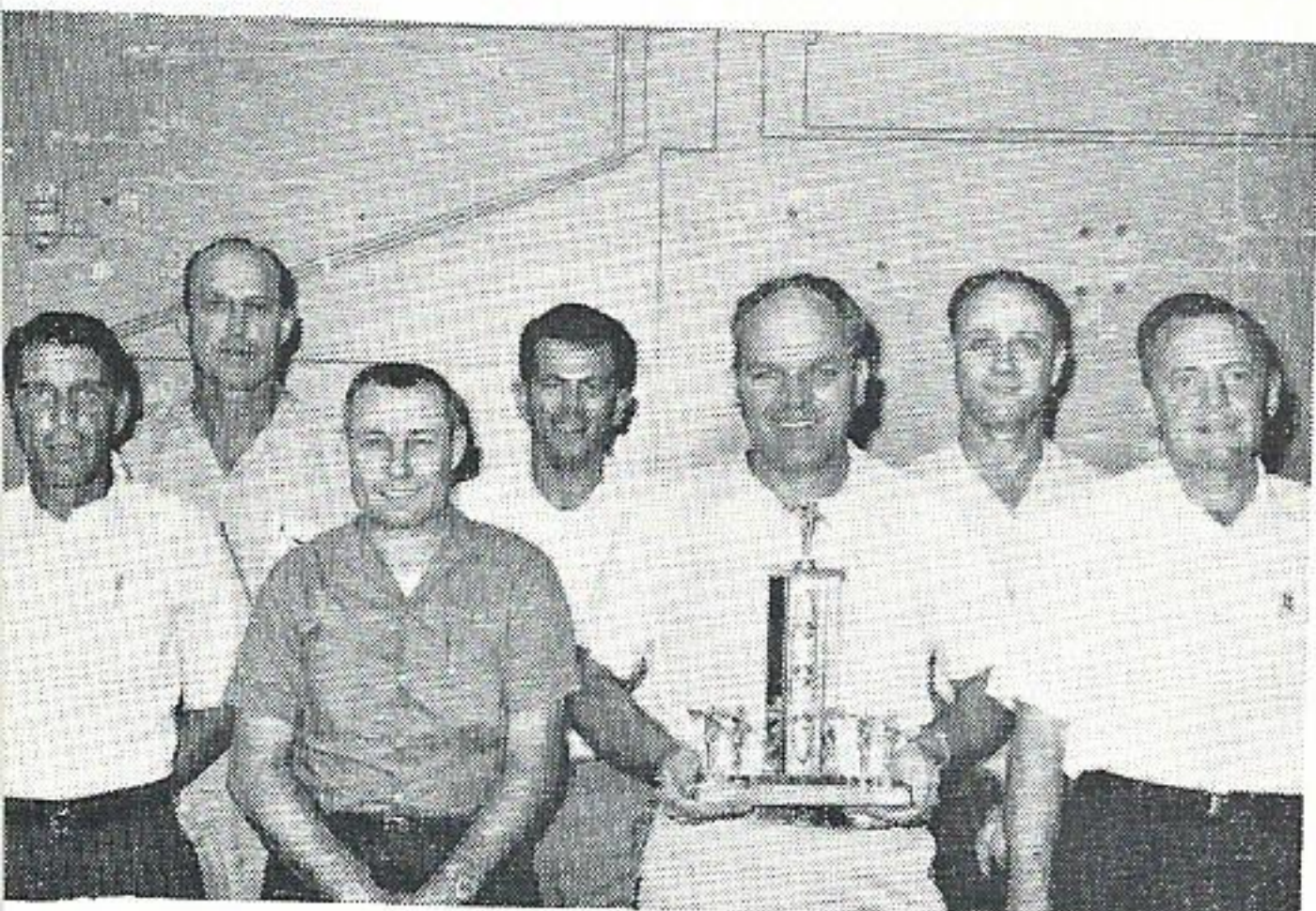
LAFAYETTE



It's crawfish time in Cajun land and this group is taking advantage of it. Shown from left at the annual Lafayette Office Crawfish Boil are Mrs. Oray Hernandez, Dale Compton, line foreman, Edwin Judice, substation mechanic, Mrs. Edwin Judice, Mrs. Charlie Breaux, and Charlie Breaux, utility foreman.

Sue Champagne

LAKE CHARLES



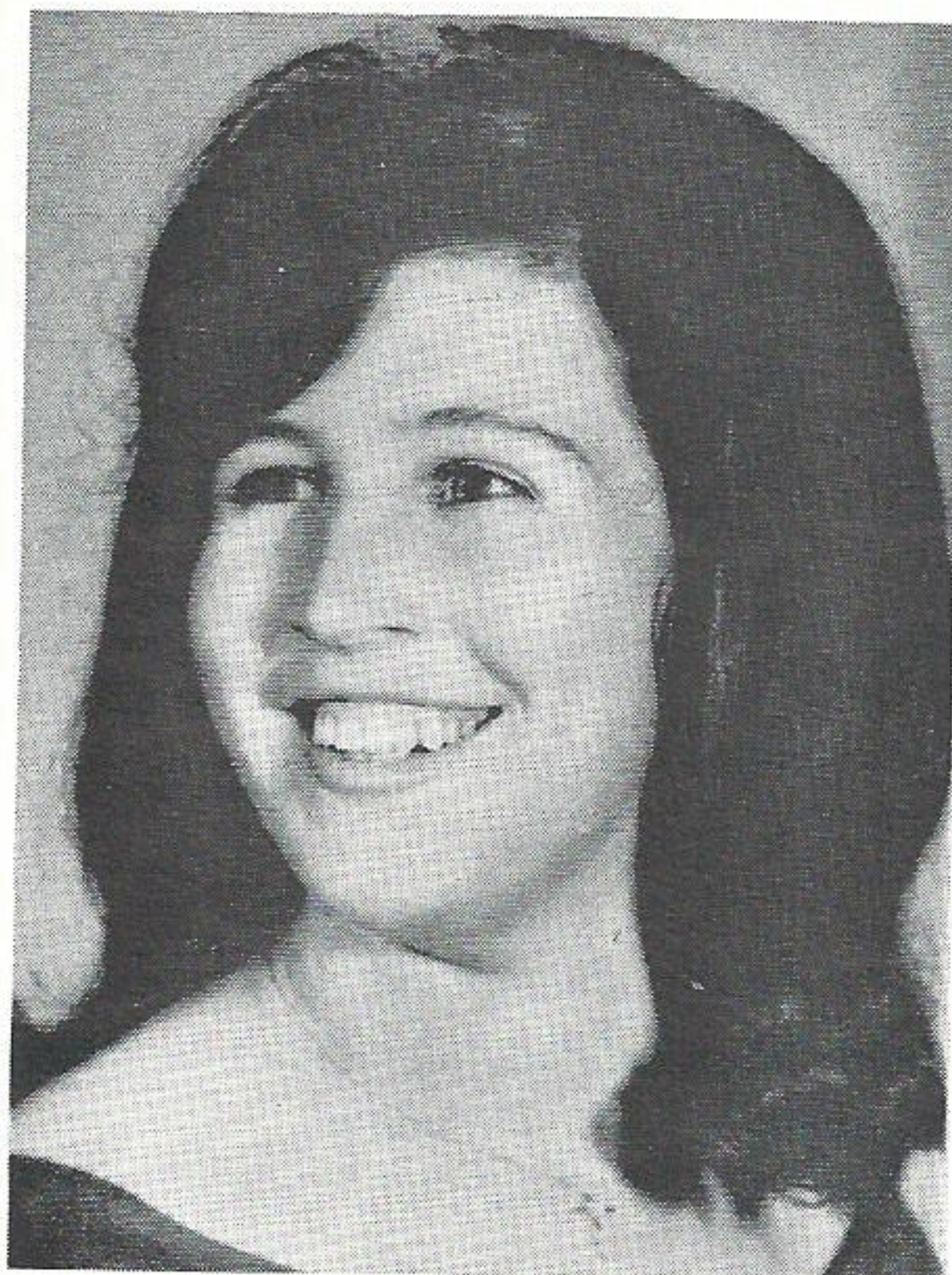
The Gulf States employees bowling team sponsored by Sonnier Electric Company placed second in the Industrial Invitational Bowling League for the 1967-68 season. From left are Harry Stelly, Columbus Hanks, Hubert Landry, Gene Mullin, (back row) Carol Foreman, Gene Trahan and Johnny Prejean.

Charlene Harper



No, its not Cinderella. This is Penny Diane O'Quinn, daughter of Harry O'Quinn, of the T&D Department, as she reigned over the annual May Festival at Our Lady's School in Sulphur.

BATON ROUGE

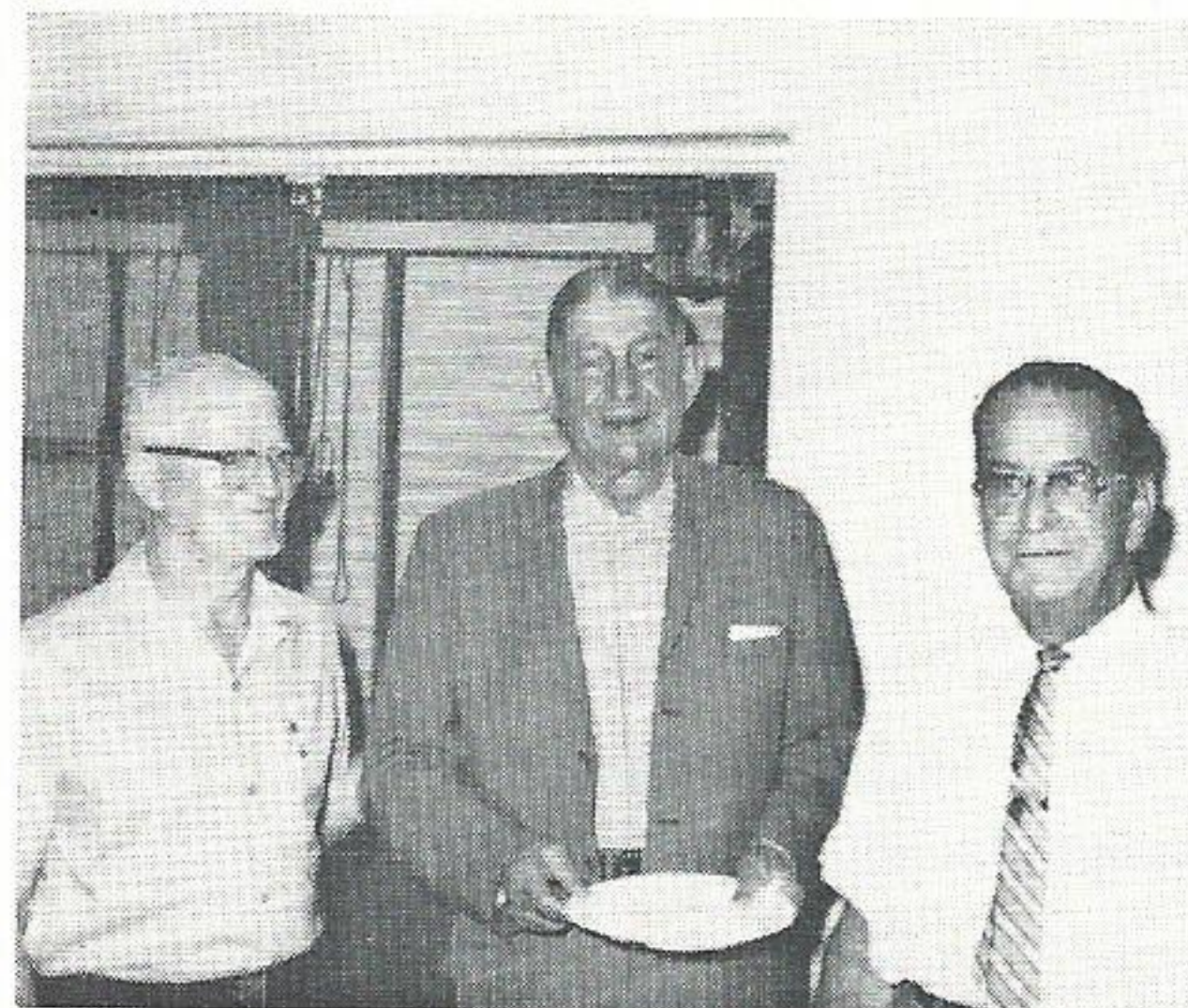


Meet Linda Kay Rabalais, daughter of B. J. Rabalais, serviceman. Linda is a May graduate of Redemptorist Diocesan Senior High School. She will work this summer and enter Draughon Business College in the fall.

Suzanne Fontenot



Baton Rouge's Executive Department gathered recently to wish Vice President R. O. Wheeler the best of luck on his June 1 retirement. Three members representing the department shown with Mr. Wheeler are from left, Shirley Eberhart, Renee Dawson and Joan Stephenson.



Approximately 150 friends honored R. O. Wheeler, Baton Rouge vice president-gas operations, with a retirement party at Louisiana Station on May 16. Mr. Wheeler retired June 1. Shown with Mr. Wheeler (center) are F. G. Hornsby (left) and A. J. Matherne, both recently retired.

Donna Parsons



"East Baton Rouge Parish 4-H Club members attended a "Better Light Better Sight" study lamp workshop at our Company's Baton Rouge main office on June 5. The group constructed several of the lamp kits. Assisting the 4-H members in their electric project were Harriet Babin (right) and Rachel Guthrie (left background), home service advisors.

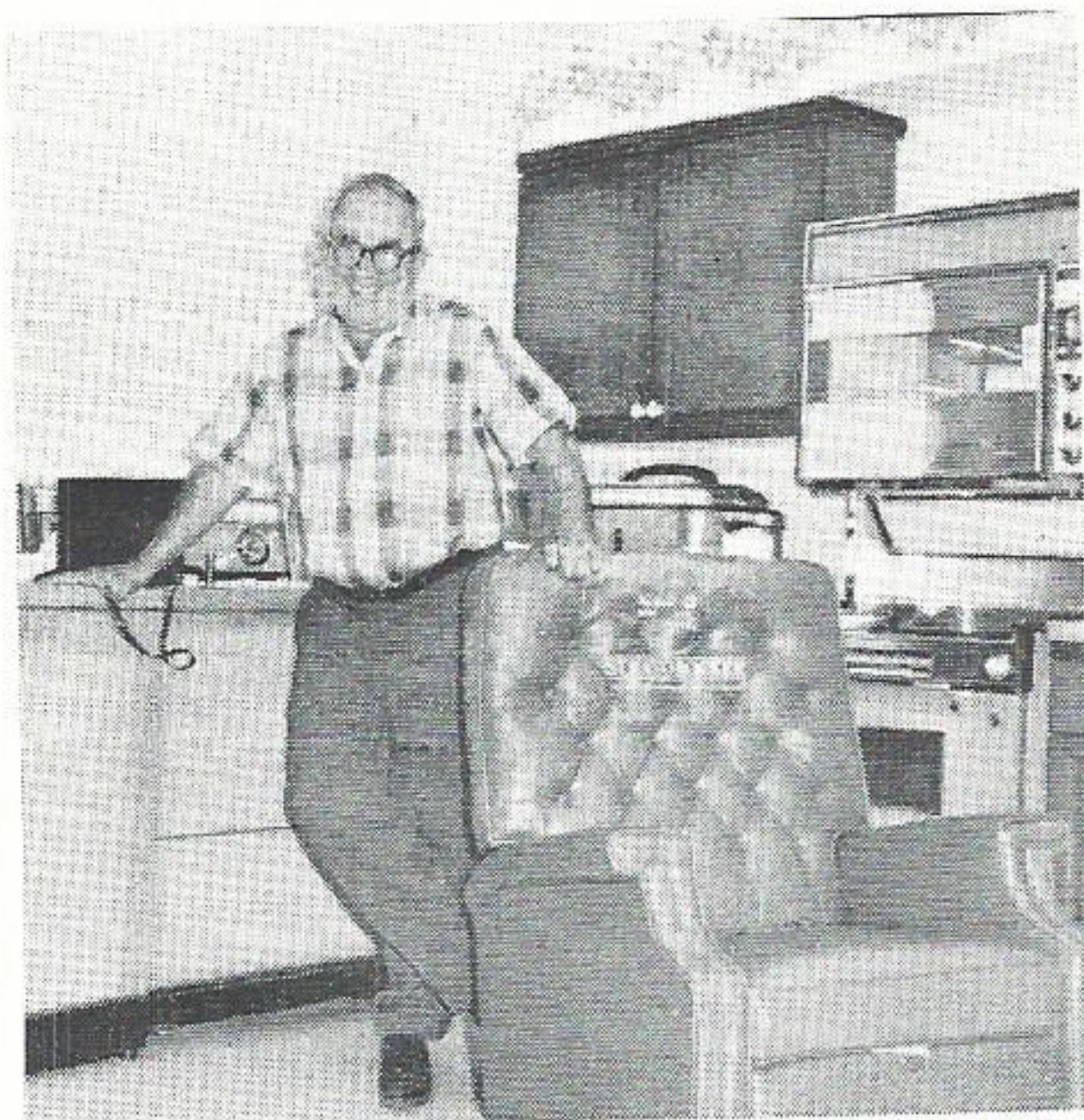
NELSON STATION



Some smiled, some squinted, as this group of youngsters from Hathaway School in Jennings posed for a photo after their tour of the station May 27. C. E. Chambers explained the steam cycle and described the major equipment and its function. He also explained how electricity is made and transmitted from the power house to the home. Alan Levine, George Brill and Mr. Chambers guided the group on their tour of facilities.

Jean Burk

SULPHUR



Employees in Sulphur presented Guy Settoon with this lounge chair at his retirement party April 30th. Guy was with the Company for 33 years. He retired as serviceman 1st class. Guy, however, has not retired from work, he will be employed by the City as electrical inspector.

Pearl Dorbonne

NAVASOTA



Willie Petzolt retired May 31 after 24 years of service. He was given a rod and reel, a trot line, and a 3.9 horsepower outboard motor by his many friends in the Navasota Division. He is shown above with Mrs. Petzolt.

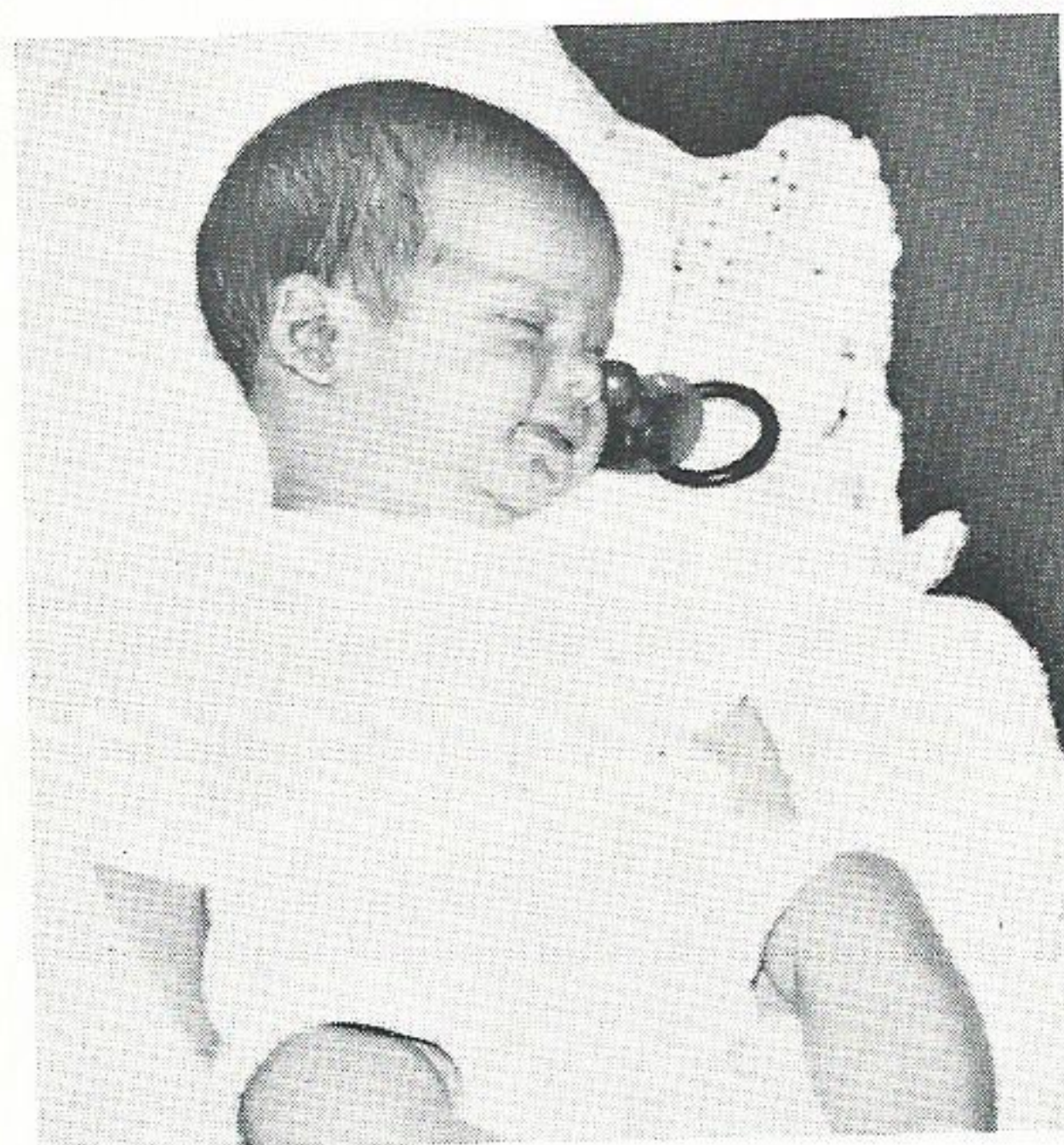


Barbara Calhoun, local office clerk, at Navasota, left the Company May 31 to move to Katy and become a housewife. She was given a "piggy bank" full of money which she holds in the photo above.

BEAUMONT

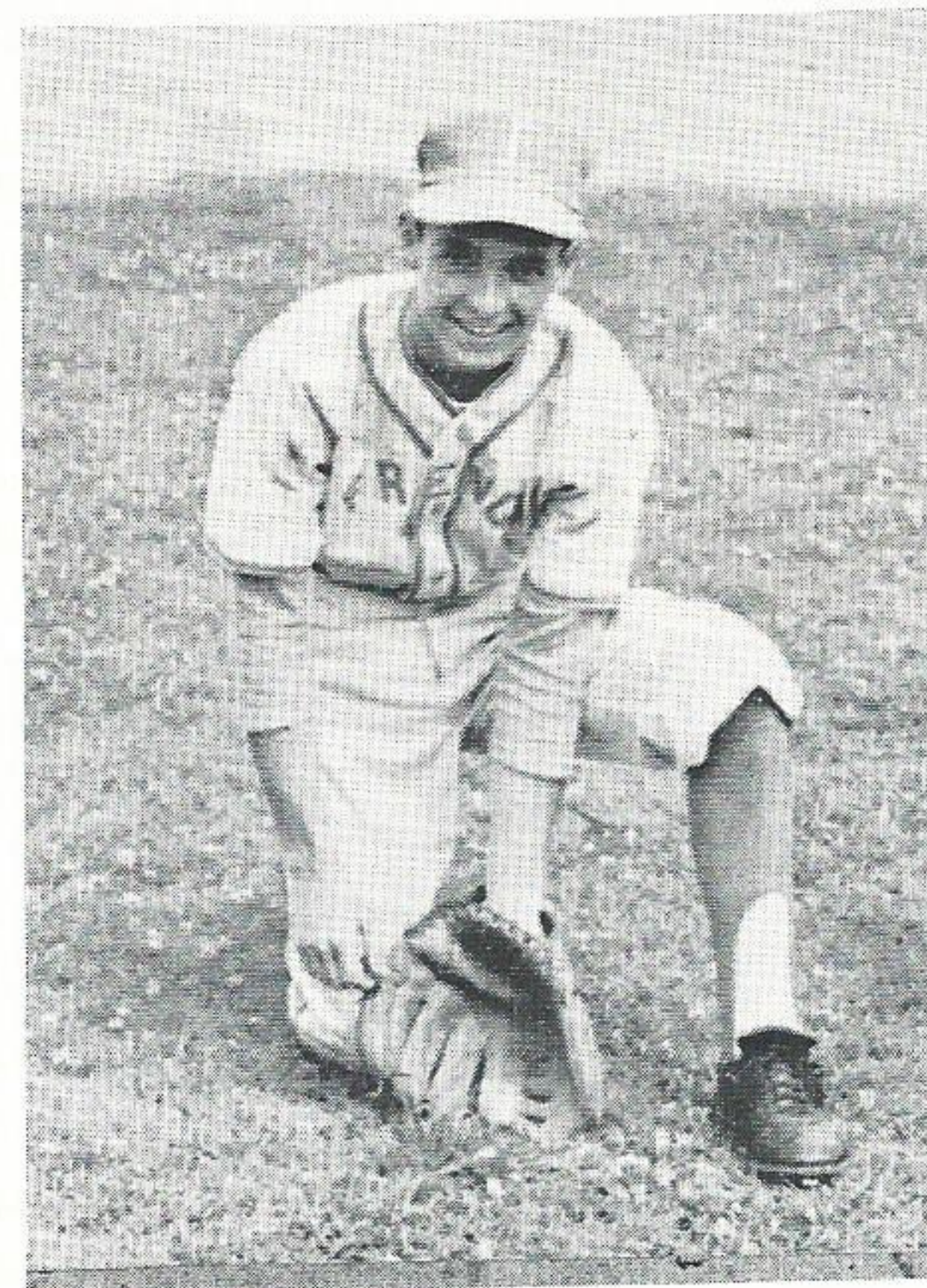
H. C. "Pappy" Sandefer, residential sales representative, Beaumont Division Sales, is the proud grandfather of a new granddaughter, born to daughter, Glenda, and son-in-law Albert Lee Hay on June 17 in Fort Worth, Tex. Shelly Michelle tipped the scales at 8 lbs. 7 oz. Glenda worked two summers in Beaumont T&D while she was in school.

Dorothy Gaus



Imogene and Prentice Ward, administrative accountant in Plant Accounting, are the proud parents of this fine young man. He is John Weldon, four months old.

Lynn Hardy



William (Bubba) Boykin, a senior at French High School, has played short-stop for the school team for the past three years. The team won district championship and Bubba was named to the All-District Team by the Beaumont Journal. His batting average is 296. In the district play, he did not make an error. His proud papa is Dave Boykin, of the Engineering Design Department.

Sandy Summers, stenographer in Beaumont Division Sales, received an engagement ring from Rusty Wilson on June 15. Congratulations.

John Hill, son of Mrs. Ruth Hill and the late John Hill graduated from the University of Texas School of Law June 1. John's father retired in 1962 from the T&D Department after 40 years of service to the Company. John was the second of the Hills to graduate from law school. Jerry Hill is presently a corporation lawyer in Houston. Both of the Hill boys worked for the Company during their summer vacations from school.



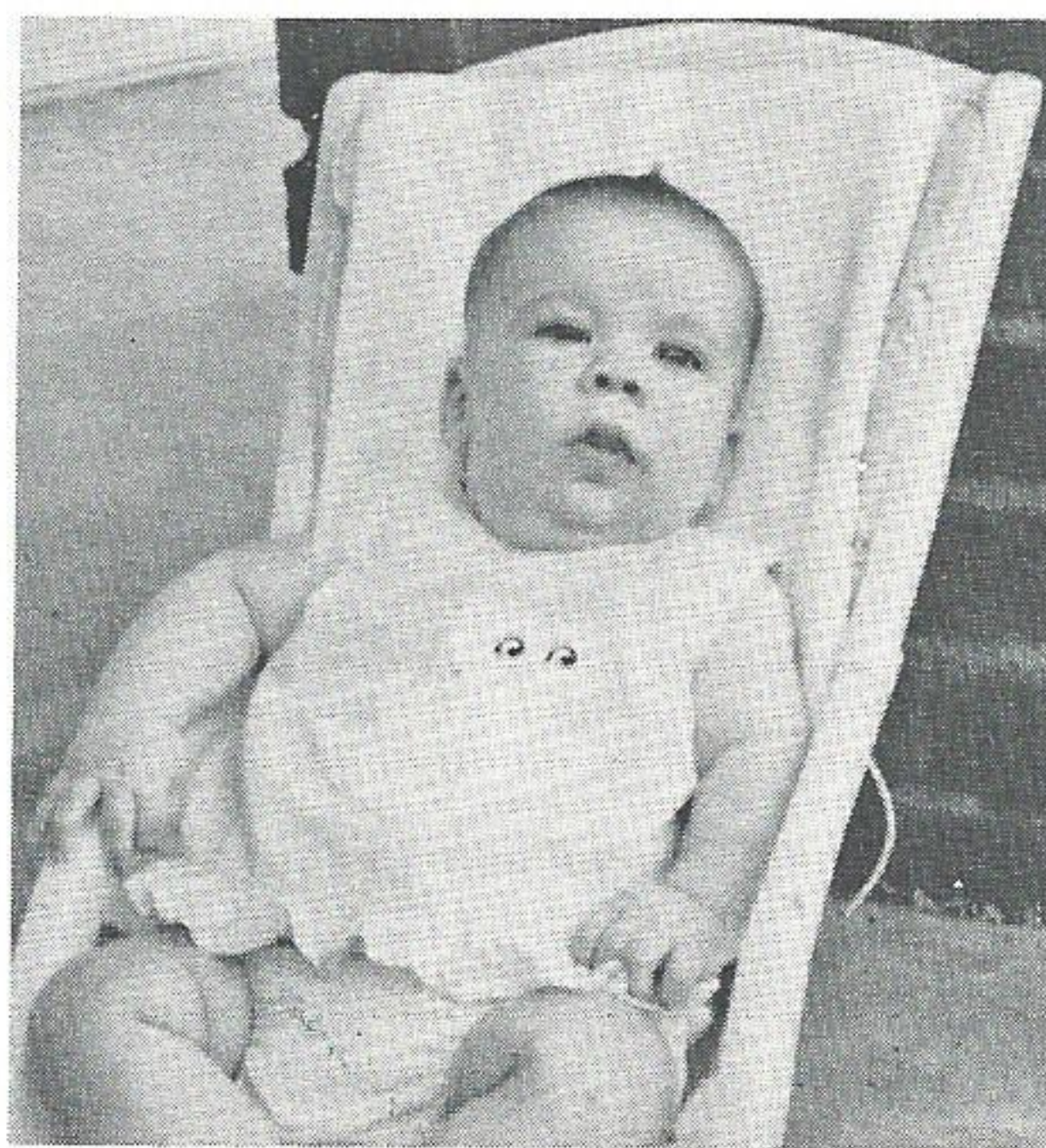
Friends of Marie Michael, stenographer in the Corporate and Finance Department gathered to wish her a fond farewell on May 31. Marie left the Company after four years to take up the duties of motherhood.

Paulette Roddy



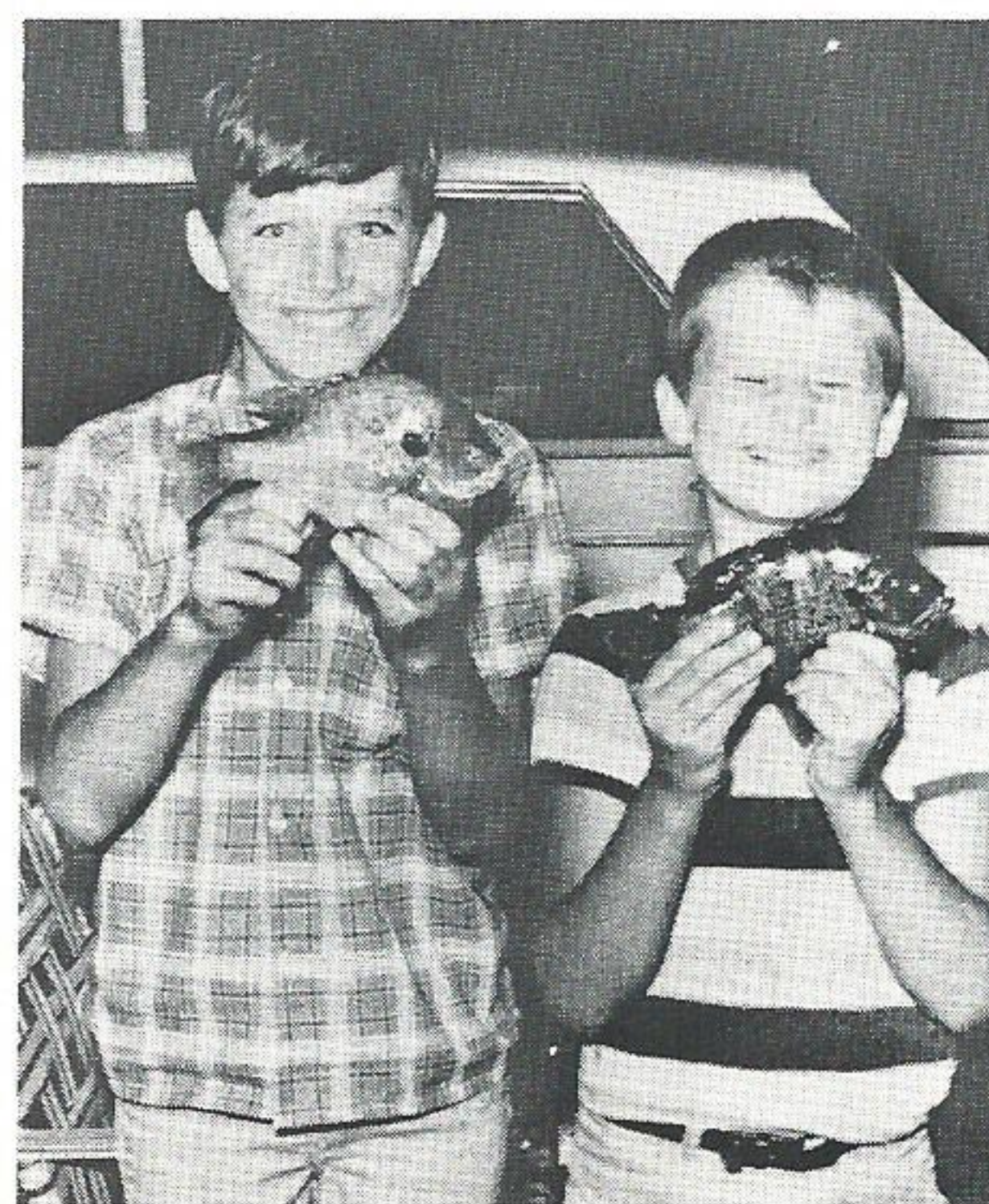
The graceful young dancer in the center of this photo is Miss Janey Duke, eight-year-old granddaughter of Clarence M. Hereford. Janey performed recently in a dance recital in Lafayette, La., where she lives with her parents, Charles and Betty Duke, Janet's granddaddy is in the Meter Department.

Jo Anne Landry



This pretty little starry-eyed gal relaxing in the shade is Michelle Marie, daughter of the Kenneth E. Knowles. Dad is a relatively new Gulf Stater, who has been a T&D substation operator since January.

Jo Anne Landry



Kenneth Wells, 12, and Richard Wells, 10, show off two of the more than 30 oversized bream they caught recently at Old River. The boys are sons of Willie B. Wells, serviceman first class.

Beverly Hayden

GAS DEPARTMENT



Connie Dawson, daughter of Robert C. Dawson, serviceman first class, has been chosen to serve for the coming year as one of three sweethearts for the Beta Omicron Chapter of Pi Kappa Phi Fraternity at Northwestern University.

Connie also is a member of the "Little Sisters of Pi Kappa Phi," an organization of girls formed to help the fraternity.

HULL



That's Serviceman Joe Foreman (without the feathers). Joe bagged the 20.5 pound wild gobbler at Liberty, Miss., in April. Joe tells us that this is extra large for a wild turkey. Joe killed one more turkey and caught lots of catfish during his stay in Mississippi. Wish we could have been with you Joe!

Beaumonters Nets Share of Stock In "You Have A Problem" Contest

DENNIS Brennan of the Budget Department in Beaumont, receives a share of common stock for his winning entry to this month's "You Have A Problem Contest." Several good entries were received but Dennis topped the list when the judging was completed.

In order to be as fair as possible to both residential and commercial customers, certain qualifications are set up to categorize customers. To qualify under the residential rate the customer's building would have to be a single family residence or individual apartment for domestic purposes.

Thus when Fred changed the front room on his house to a dress shop, his home was no longer for domestic purposes only and did not qualify for the residential rate.

However, suppose Fred wanted to build and operate a bowling alley instead of a dress shop. GSU would have to invest in a lot of extra equipment at the building site in order to serve the larger load the bowling alley would need. Even though the cost to serve the bowling alley would be much more for GSU, the bowling alley could probably qualify for the same rates as the dress shop. Also, Fred could deduct the amounts of his bills on the commercial rates as a business expense on his tax return. Residential rates are not normally deductible.

Finally, even though Fred would have to pay the commercial rates, GSU would be more than glad to help him select the cheapest rates possible for his particular line of business.

THE boldfaced portions of Dennis' entry are the ones that won for him. Cheaper costs of serving residential customers is the answer that the judges were most interested in.

Dennis might also have noted that residential rates are lower because homes are generally closer together and because they may be served by lighter equipment costing far less to install. Several homes on the same block may be served by one small transformer while a single com-

mercial establishment will require three large transformers for only the one customer.

ANOTHER factor which nearly everyone entering seemed to overlook is that residential customers have a more uniform load factor. Commercial establishments use electricity only about nine hours a day, five days a week. Residences use less electricity generally, but they use about the same amount from 12 to 24 hours each day,



Dennis Brennan

365 days per year. This coupled with the fact that 10 or more homes may be served by one small transformer while it may take three large ones to serve one commercial establishment, results in statistics that prove residential transformers generally dispense far more electricity than commercial ones.

PLAIN TALKS wishes to thank everyone that entered this month's contest. Next month a new problem will appear in this space and, who knows, your entry may be worth a share of stock.



Employee Benefits

Aid to Education

TWO Company sponsored programs are available to employees wishing to further their education. They are the Financial Aid to Education Program for those interested in attending college or vocational schools and the Adult Education Program for employees wishing to complete high school.

In October of 1957 the Financial Aid to Education Program was inaugurated for employees "wishing to take college courses or correspondence courses." Under the program any regular (one year or more with the Company) full-time employee is eligible to receive 50 percent of all costs necessary to complete any approved course. The course must be related to the employee's job, or be credits toward a degree in the type of work in which the Company is engaged. It must be approved as falling into this category by his supervisor and the Training Department.

Only courses from acceptable educational institutions will be approved.

Refunds of all costs, not including costs related to equipment, penalties, postage deposits, parking, etc., will be made upon request when the course is satisfactorily ('C' or above) completed. The course must be completed while the person is a regular employee.

The plan is open only to the employee who receives no other financial aid for education. This eliminates aid for anyone receiving benefits from the federal government through the G.I. Bill of Rights for World War II and Korean War Veterans; from the state of Texas through the Hazelwood Act; or from the state of Louisiana through any financial aid for education plan that this state provides.

In August of 1965 the original program was amended so that 100 percent of the cost of obtaining masters or doctors degrees is refunded. Applying the same rules as for undergraduate work, the student-employee is reimbursed 50 percent of the costs at the completion of each semester of graduate work and is awarded the other 50 percent when he receives his degree.

The first step for an employee wishing to take courses under this plan is a talk with his supervisor. The employee next obtains an "Application for Course Approval" from his supervisor. This should be completed and returned to the supervisor who forwards it to the Training Department.

Upon satisfactory completion of the course the

employee obtains an "Application for Refund." This is completed and returned to the supervisor who will again forward the document to the Training Department. The "Application for Refund" must be accompanied by receipts for all costs for which the employee wishes a refund. Textbook purchases must also be covered by written receipts.

Also accompanying the refund application should be all grade slips, certificates, or copies of these.

Since the start of the program the Company has refunded more than \$25,000 to participants who filed some 808 applications. The average cost per application has been \$31.15. Presently 43 employees are attending college under this plan, and 136 employees are enrolled in vocational or correspondence courses. Some 11 of those enrolled in college courses are working toward a Master's Degree.

As the result of a study made of the facilities available in our service area for employees wishing to complete their high school educations the Adult Education Program was developed in September of 1967.

THE program offers 100 percent financial aid to employees actively participating in courses which will lead to either a high school diploma or a General Educational Development (GED) Certificate.

In areas where courses through local school districts are not available, employees may enroll in correspondence courses which will give them the background necessary to attain the GED certificate. There are presently sixty-six employees enrolled in courses of study and working toward this goal.

Those employees who have their GED or high school diploma and wish to improve in particular areas may obtain refresher course workbooks in English, mathematics and science from the Training Department free of cost. Also, there are several copies of the book, "How to Pass High School Equivalency Exams" in the Company Library which may be borrowed.

Anyone having questions regarding either this program or the Financial Aid to Education Program should speak with their supervisor or they are welcome to call the Training Department in Beaumont.





CAJUN CUISINE

J. S. Gray, control operating foreman at Willow Glen Station, is well known throughout the Baton Rouge area, for his culinary talents. Mr. Gray says that most of his knowledge of cooking came as a result of "just fooling around in the kitchen." "When I start cooking it will usually turn into an all day affair," he says.

Mr. Gray doesn't cook from any set recipe. The recipes below are originals which he recited from memory. "The most important thing about cooking is the taste of the final product. That's the way I cook, by taste." Here we have a few of his recipes for favorite cajun dishes.



SAUCE PIQUANT

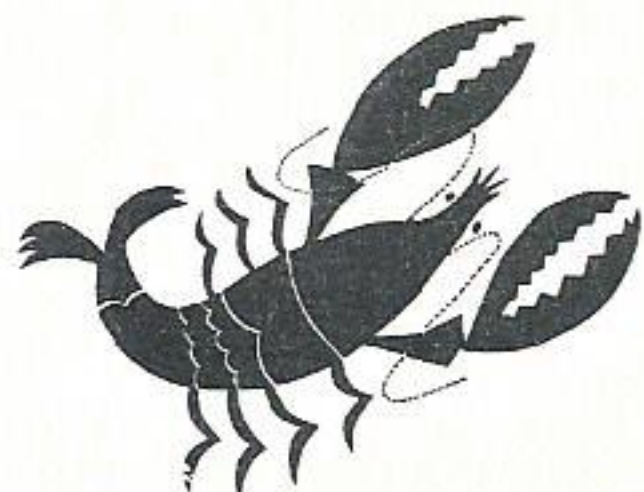
- | | |
|---|--|
| 2 bunches green onions
finely chopped | 4 to 6 oz. of meat for
each person to be served. |
| 6 large onions finely
chopped | Meat may be either turtle,
venison, beef (either bone-
less stew or ground), chic-
ken, shrimp or crawfish. |
| 2 med. size bell pepers
finely chopped | 4 tbs. of flour |
| $\frac{1}{3}$ cup sugar | 5 cans tomato paste |
| 1 cup celery finely
chopped | 1 can tomato ro-tel or |
| $\frac{1}{2}$ cup cooking oil | No. 2 can of tomatoes |
| $\frac{1}{2}$ tsp. cayenne pepper | $\frac{1}{2}$ tsp. garlic powder |
| | 8 oz. parmesan cheese |

Simmer onions, bell peppers, celery and oil in 12 quart pot. Brown the meat in frying pan, then add to mixture of onions, bell peppers, celery and oil. Add flour to grease left over from frying meat and brown to cocoa color—don't burn.

Put ingredients of skillet (roux) into large pot with onions, bell pepper and meat. Pour in tomato paste. Add water to desired thickness. Add garlic powder to mixture.

Season gravy to taste with salt, black pepper and red pepper. Add cheese and sugar. Bring mixture to boil then cut heat to simmer. Allow mixture to simmer 3 to 4 hours stirring occasionally. Skim off excess grease which will rise to top of mixture as you stir.

Serve over rice. Serves 10 to 15.



SHRIMP CREOLE

To make authentic Louisiana shrimp creole use same ingredients and procedure as for sauce piquant but allow onion, bell pepper, and celery to cook in oil until soft. Add raw, peeled shrimp, three to four ounces per serving and cook for about 10 minutes. Cut simmering time to one hour. Serve over rice with your favorite green salad for a real Creole meal.

FRENCH MEATBALLS AND SPAGHETTI

Use same basic recipe and procedure as for sauce piquant but increase garlic powder to one full teaspoon. Make sauce just as you would make sauce piquant excluding, of course, the meat. To make meat balls, mix two raw eggs into ground meat. Season with red pepper, salt, black pepper, and garlic powder. Make into balls.

Three or four average-sized meat balls per serving should be made. Excess sauce may be frozen and used later.

Brown meatballs on outside leaving inside raw. Drop into sauce and allow to simmer three to four hours.

SEAFOOD GUMBO

- | | |
|--------------------------------|------------------------|
| $\frac{1}{2}$ cup cooking oil | 3 to 4 oz. raw shrimp |
| $\frac{3}{4}$ cup flour | peeled |
| $\frac{1}{2}$ doz. cleaned raw | 3 links hot, country |
| crabs or can of crab | sausage |
| meat | 1 can tomato ro-tel or |
| 4 large onions finely | a No. 2 can of |
| chopped | tomatoes |
| 2 bunches green onions | 1 package frozen okra |
| finely chopped | or equal amount of |
| 1 large bell pepper | chopped fresh okra |
| finely chopped | 1 tsp. gumbo file |
| 1 cup celery finely | |
| chopped | |

Make roux by heating oil and then adding flour a little at a time stirring constantly until flour and oil make cocoa-colored mixture. Be careful not to burn. Add shrimp and sausage to roux and cook until shrimp turn pink and sausage is browned. Add onions, bell pepper and celery. Cook at medium heat for 10 minutes stirring constantly. Add water until mixture is a thin soup. Add crab. Mash tomatoes into mixture and season to taste with salt, black pepper and red pepper. Bring to boil. Add okra and gumbo file. Cut heat so that mixture simmers and allow to simmer until okra is cooked. Serve with rice.

AFTER FIVE DAYS RETURN TO



P. O. BOX 2951
BEAUMONT, TEXAS

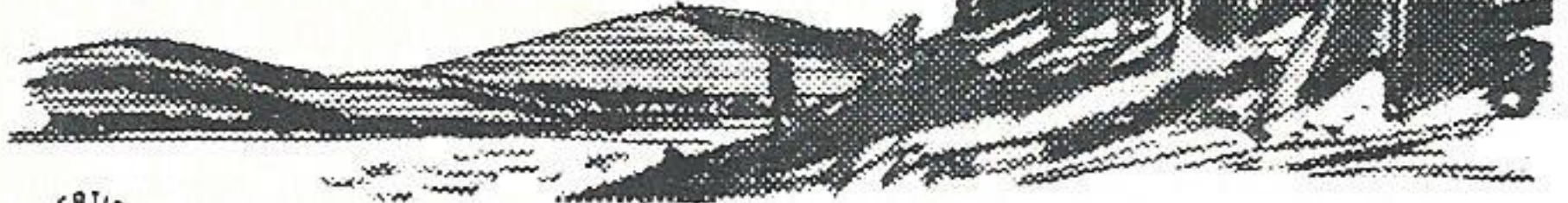
RETURN POSTAGE GUARANTEED

Bulk Rate
U. S. POSTAGE PAID
Beaumont, Texas
Permit No. 11

Don't burn debris on dry windy days

Too many forests are burned
because people forget this rule.

Please, only **you**
can prevent
forest fires.



advertising contributed for the public good