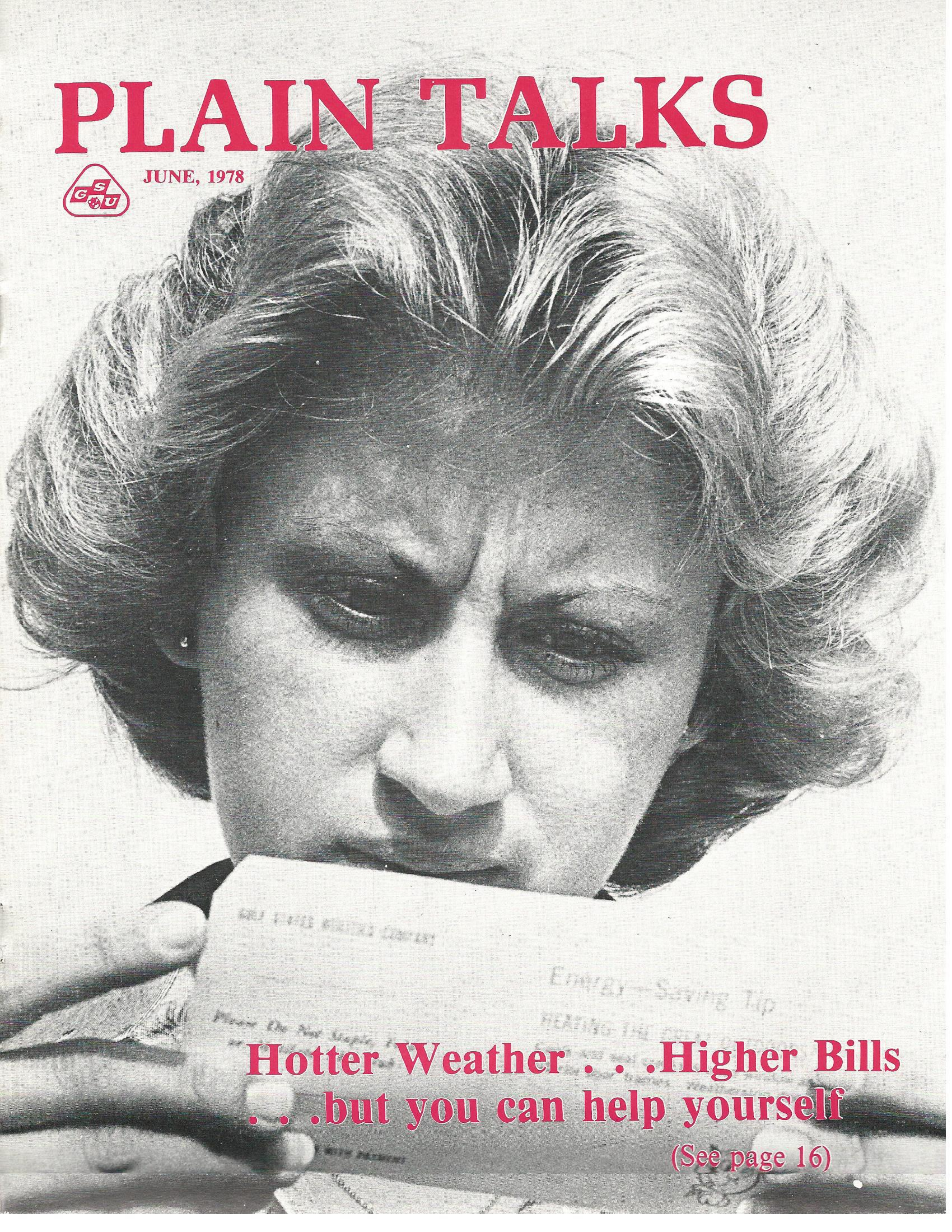


PLAIN TALKS



JUNE, 1978



**Hotter Weather . . . Higher Bills
. . . but you can help yourself**

(See page 16)

Welcome Aboard

SYSTEM DEPARTMENTS

System Operations

Lightfoot Roy L Jr, Bmt., Laborer I-Transportation

Project Services

Garza Violet M, Bmt., Dept Clerk - Overall

Quality Assurance

Ellison Barbara S, Bmt., Dept Clerk - Overall

System Engineering

Warrick Lucienne M, Bmt., Dept Clerk - Real Estate

Accounting Services

Gussman Diane M, Bmt., Clerk - Payroll

Material Services

Jackson Susan M, Bmt., Clerk - Overall

Himmelreich Peggy L, Bmt., Clerk - Overall

Taylor Alicia L, Bmt., Clerk - Stores & Salvage

General Services

Coody Mark D, Bmt., Laborer I - Off Svs-Mail Svs

Wright Anna, Bmt., Dept Clerk - Off Svs-Microfilm

Eppler Kelly E, Bmt., Stenographer - Off Svs-Steno

Bonura Audrie A, Bmt., PBX Operator - Off Svs-PBX

Ronquille Pamela G, Bmt., Dept Clerk - Off Svs-Microfilm

BEAUMONT DIVISION

Division Production

Ochoa James L, Bmt., Mech Helper - Neches Sta-Mechl

Berlin Bonnie D, Bmt., Laborer I - Neches Sta-Lavor Crews

Distribution

Lowe Gary, Bmt., Laborer I - T&D/Garage

Ward Roy K, Bmt., Shop & Field Tester - T&D/Meter

Callender Mark R, Bmt., Engr Helper - T&D/Engrg

Pinson Thomas W, Orange, Lineman 3/C - T&D/Line

Division Accounting

Bridges Doris K, Silsbee, Meter Reader - Cust Accts

PORT ARTHUR DIVISION

Division Production

Miller Anita K, Pt Arth., Equipt Oper - Sabine Sta-Operns

Lopez Efren B Jr., Pt Arth., Equipt Oper - Sabine Sta-Operns

Romero Drake J, Pt Arth., Laborer I - Sabine Sta-Labor Crews

Gilford James Jr, Pt Arth., Equip Oper - Sabine Sta-Operns

Casmire Larry P, Pt Arth., Laborer I - Sabine Sta-Labor Crews

Wolf Arthur, Pt Arth., Equipt Oper - Sabine Sta-Operns

Distribution

Pierce Joey N, Pt Arth., Laborer I - T&D/Labor Crews

Division Accounting

Deshazo Carlo D, Pt Arth., Clerk - Cust Servs

Polidore Harriet L, Pt Arth., Clerk - Credit & Coll

Preslar Avnell M., Pt Arth., Clerk - Cust Servs

WESTERN DIVISION

Distribution

Sechelski Darlene C, Navasota, Dept Clerk - T&D/Garage

Wooley Darrell G, Huntsvl, Helper-T&D/Labor Crews

Cantu Ricardo A, Huntsvl, Helper-T&D/Labor Crews

Division Marketing

Gilbertson Dorothy S, Conroe, Consumer Service Adv-Consum Service

Division Accounting

Pierce Clyde W, Conroe, Laborer I - Stores

BATON ROUGE DIVISION

Division Production

Knight Woodie S, B Rouge, Operator's Helper - La Sta-Operns

Landry Larry J, B Rouge, Repairman 2/C - W/Glen-Mechl

Holmes Joseph, B Rouge, Operator's Helper - La Sta-Operns

Mahier Mimi T, B Rouge, Laborer I - La Sta-Labor Crews

Miller Terry K, B Rouge, Equipment Operator-W/Glen-Operns

Cooley Daniel H Jr, B Rouge, Repairman 1/C - W/Glen-Mechl

Gipson Dale, B Rouge, Equipment Operator-W/Glen-Operns

Davis Donald R, B Rouge, Operator's Helper - La Sta-Operns

Creekbaum Wade J, B Rouge, Labor I - La Sta-La Sta-Operns

Vaughn Jonathan W II, B Rouge, Laborer I - W/Glen-Labor Crews

Gaudin Richard S, B Rouge, Operator's Helper - La Sta-Operns

Hemme Almedia B., B Rouge, Operator's Helper - La Sta-Operns

Clark Joan E, B Rouge, Dept Clerk - La Sta-Engr & Clerical

Gas Department

Watts Ricky E, B Rouge, Laborer I - Gas Dept/Distr-Labor Crews

Wilharms Jerald W, B Rouge, Laborer I - Gas Dept/Distr-Labor Crews

Distribution

Ferrari Peter J III, B Rouge, Laborer I - T&D/Labor Crews

Tompley Joseph E, B Rouge, Laborer I - T&D/Labor Crews

Mencer Eroll W, B Rouge, Laborer I - T&D/Labor Crews

Landry Michael W, B Rouge, Laborer I - T&D/Labor Crews

Greenhill Charles R, B Rouge, Laborer I - T&D/Labor Crews

Pelichet Torris J Jr, B Rouge, Laborer I - T&D/Labor Crews

Harmon Melvin L, B Rouge, Helper-T&D/Labor Crews

Division Accounting

Mays Kim A, B Rouge, Meter Reader - Cust Accts

Zito Judith L, B Rouge, Laborer I - Stores

Talley Cynthia T, B Rouge, Clerk - Cust Accts

Plaisance Donna B, B Rouge, Stenographer - Cred & Coll

LAKE CHARLES DIVISION

Division Production

Perry Jack K, L Chas, Mechanic Helper - Nelson Sta-Mechl

Larocque Bryan D, L Chas, Equipment Operator - Nelson Sta-Operns

Distribution

Champagne Terry H, Lafay, Helper-T&D/Labor Crews

Jennings Leonard, Sulphur, Helper-T&D/Labor Crews

Landry Mitchell K, Jennings, Laborer I - T&D/Garage

MANAGEMENT

Rewerts James L, Bmt., Engineer - Pwr Plant Eng & Design

Delgado Gustavo A, Bmt., Engineer - Sys Eng-Eng Design-Constr

Lawson Michael N, Pt Arth., Engineer - Div Prod - Sabine Sta

Lundholm Robert C, B Rouge, Engineer - Pwr Plant Constr-R/Bend

Willey Harold E, B Rouge, Structural Inspt - Pwr Plant Constr/R Bend

Saari William W, B Rouge, Internal Auditor - Int Audits-R/Bend

PLAIN TALKS

Volume 56 - Number 5 June, 1978

Published monthly for employees and annuitants of Gulf States Utilities Company. Produced within the Public Affairs Department, Jack F. Worthy, vice president, by the Communications Department, James S. Turner, manager. Address all communications, including requests to reprint materials, to Editor, PLAIN TALKS, Gulf States Utilities Company, P. O. Box 2951, Beaumont, Texas 77704. Phone (713) 838-6631.

J. Patrick McMeel . . . Editor
Rick Harvin . . . Contributing Editor
Gary Dias . . . Contributing Editor
Ken Haynie . . . Artist

Reporters:

If you have any news for "Plain Talks," simply send the information to one of the following local reporters. They will be happy to assist you in getting the material to the editor.

BATON ROUGE: Margie Force (T&D), T. Boone Chancy (T&D), Melanie Hima (T&D), Jack Gautreaux (T&D), James W. Bello (T&D), GERALYN Williams (Gas), Glenda Boyd (Acct.), Mary Smith, Robert Graves (Storeroom), Susan Wilks, Debbie Lynn (Engr.), Linda Nelson (Meter), Rhonda Cheek (Govt. St.)

BEAUMONT: Bill Toups (S.C.), Carolyn Motl (T&D), Ann Ogden, Edy Mathews, Dorothy Nowell, Carolyn Thaggard, Gene Russell

CALVERT: Betty Dowell.

CLEVELAND: Edd Mitchell

CONROE: Frances Elliot, Marilyn Key

DENHAM SPRINGS: Lenelle Juban

GONZALES: Billie Fortenberry.

HUNTSVILLE: Karen Morley

JENNINGS: Earl Mayfield.

LAFAYETTE: Mona Burris

LAKE CHARLES: Billie Belvin

(Garage), Edith Patterson (T&D),

Janel Followay

LA. STATION: Marilyn Nicholson

LEWIS CREEK: D. W. Rutherford

MADISONVILLE: Jean Tinsley

NAVASOTA: Betty Dickschat

NECHES STATION: Terry Bond, Ed

Foster

NELSON STATION: Martha Caldwell.

NEW CANEY: Diana Winkelmann,

Paul Mosley

ORANGE: Doris Womack

PORT ALLEN: Adele Vavasseur.

PORT ARTHUR: Sue Williams, Lorraine

Dunham (S.C.)

SABINE STATION: Darlene Faires,

Fred Kressman

SOMERVILLE: Mary Brock

SULPHUR: Pearl Burnett

WILLOW GLEN: Dora Landaiche,

James Veatch

WOODVILLE: Alene Cole

ZACHARY: Myra Ponthier

CONTENTS

Welcome Aboard . . . Inside Cover

River Bend Security 2

Free access will not be allowed at the nuclear facility

Unsung Heroes 6

A lot of behind the scene work goes on to keep the main office functioning

Dateline: Hull, Texas

A nice place to work and raise a family

GSU News 12

Construction plans altered
 Mr. Smith retires
 New vice presidents
 NEW kicks off
 Bowling tourney results
 . . . and more

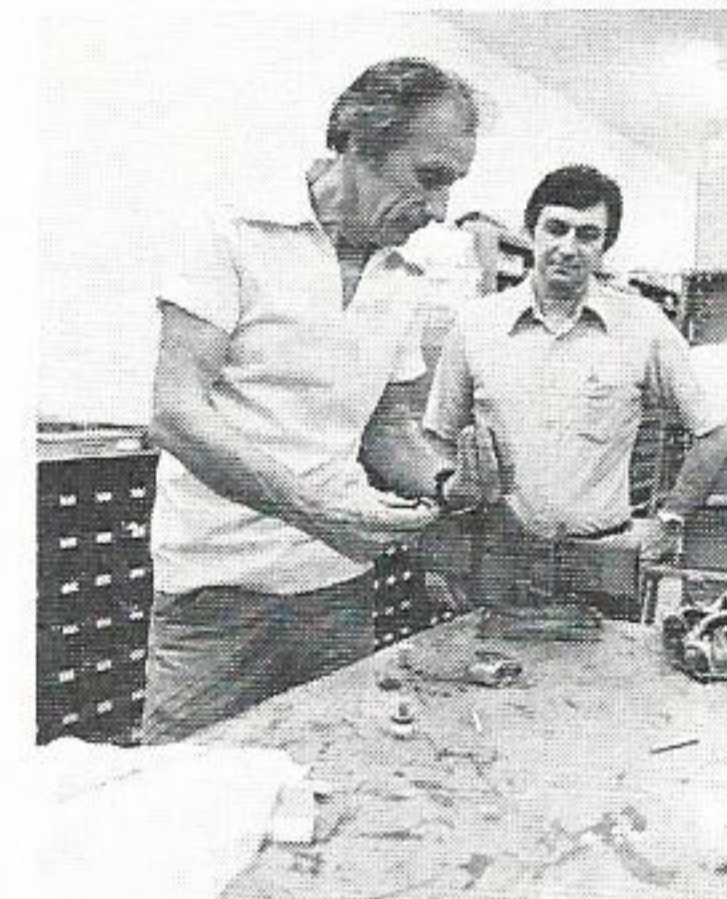
People On The Move 22

Retirements 27

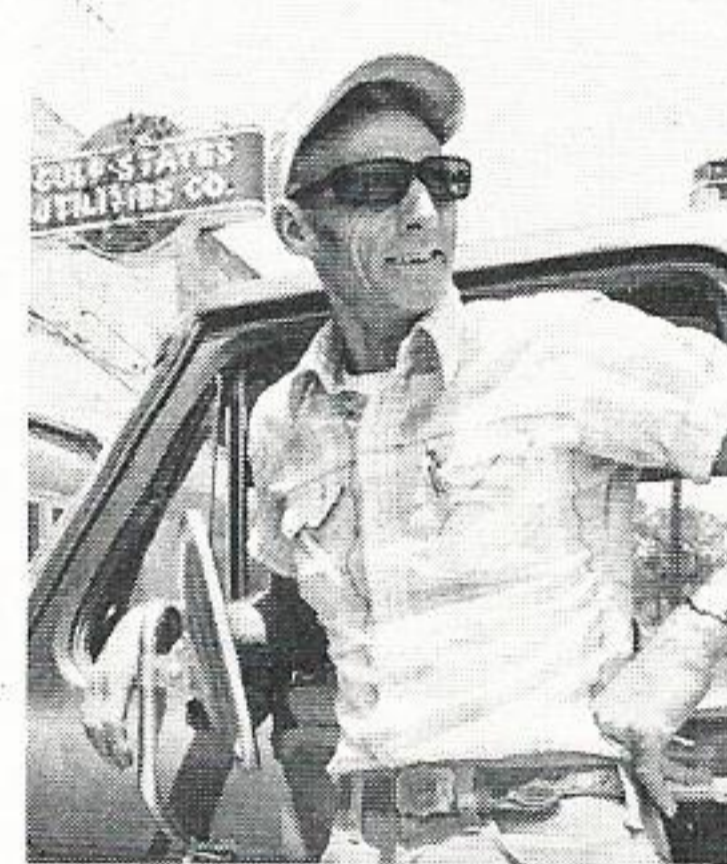
Service Awards Banquets 28

291 employees are honored

THE COVER: Starr Woodall, Customer Accounting-Beaumont, helps illustrate the point that, with the coming of the hot months of summer and the increase of energy use it will take to cool homes, utility bills will be on the rise . . . along with the temperature. Our customers are urged to investigate ways of making their homes more energy efficient. See National Energy Watch campaign story on page 16.



Page 2 - Heroes



Page 6 - Hull, Texas



Page 20 - "Cafe Coronary"



**“Security is a very serious business.
I hope everyone understands the ‘why’
of checking in and out.”**

**Craig Woody
Security Coordinator
River Bend Station**

Tough NRC Guidelines

River Bend Security Force To Be Thoroughly Trained

As in licensing, nuclear plant security forces must be prepared to meet the "maximum" security breach.

Much has been made of the "maximum credible accident" at a nuclear power plant. So much in fact that the design characteristics of such a facility as River Bend Station have generated engineering techniques far superior to those of a decade or so ago. It is much the same story with security of a nuclear power plant and the threat of intentional acts of sabotage.

Just as River Bend has been designed to withstand the "super disasters" of nature, hurricanes, floods, tornadoes, earthquakes and so on, so too does the Nuclear Regulatory Commission require a tough security program against potential efforts of sabotage. All licensees for nuclear power plants must consider the possibility that intentional acts of sabotage at the plant might cause a release of radioactive material. So even though the chances of such an act are considered quite small, an extensive security system will be in force at River Bend Station.

"In our case," says Craig Woody, security coordinator at the River Bend site, "NRC

regulations presently require that we plan to prevent several armed men from gaining access to the plant's vital areas where they could conceivably cause enough damage to cause a radioactive release in excess of federal guidelines." Woody went on to explain that his security personnel would have to assume that successful saboteurs might have the aid of an "insider."

"It is highly unlikely that such an attack would ever take place, let alone be successful," said Woody.

This is just one of the many standards currently being considered by the NRC in its quest for what it considers adequate or reasonable security. And it is one of the reasons why security managers are constantly having to stay on top of rules and regulations governing such forces.

Woody joined GSU less than two years ago, about the time the limited work authorization was granted. A relatively young man, he came with excellent credentials from his job as assistant manager of security at Yankee Atomic Electric in



Vicki Adams, the lady behind the voice on the phone

River Bend . . .

Massachusetts. Prior to that he commanded an explosives and ordinance disposal unit as an Army lieutenant at Ft. Devens, Mass.

Another area that causes concern about security at a nuclear facility is the question of diversion of nuclear material. Actually this is not a major problem as Woody explains.

"Even if someone did manage to break into the fuel storage area, what have they got? Unless they brought a lot of heavy equipment with them, which is unlikely, they couldn't move the fuel. They certainly can't approach an irradiated fuel bundle without shielding, it's too dangerous. The real protection problem is to prevent sabotage of enough equipment to cause a radioactive release in excess of federal limits. Because of the diversity of safety systems, and the security plan that will be in effect at River Bend, such a release is not at all likely."

As for transportation of nuclear fuel on the road, Woody again pointed out that hijacking a truck carrying a load of nuclear fuel is nearly as impossible as stealing it from a plant. "First of all the casks in which the fuel bundles rest are extremely heavy. You just don't carry them away. Secondly, the trucks themselves are very well constructed and the drivers and guards very well trained . . . I do not think stealing fuel in transit is a grave problem."

What then is one of the biggest problems facing security at a nuclear plant such as River Bend? "Probably security training and co-ordination with operations personnel. Security training requirements are likely to be quite extensive by the time River Bend security plan goes in effect. The coordination effort between the security force and plant operations and maintenance will be a constant effort."

As for the plant itself, Woody said that not all of the approximately 3300 acres of the site would be secured as such. Security efforts will be concentrated in the operating plant area. "What it basically boils down to," said Woody, "is that we will divide River Bend into three areas with varying degrees of security. The majority of the site will be "unrestricted" and will have the least security, though it will be watched. The "Owner Controlled" area will be fenced and posted. The "Protected Area" will be the actual plant operating area and will be fenced, monitored and alarmed by means presently under design consideration."

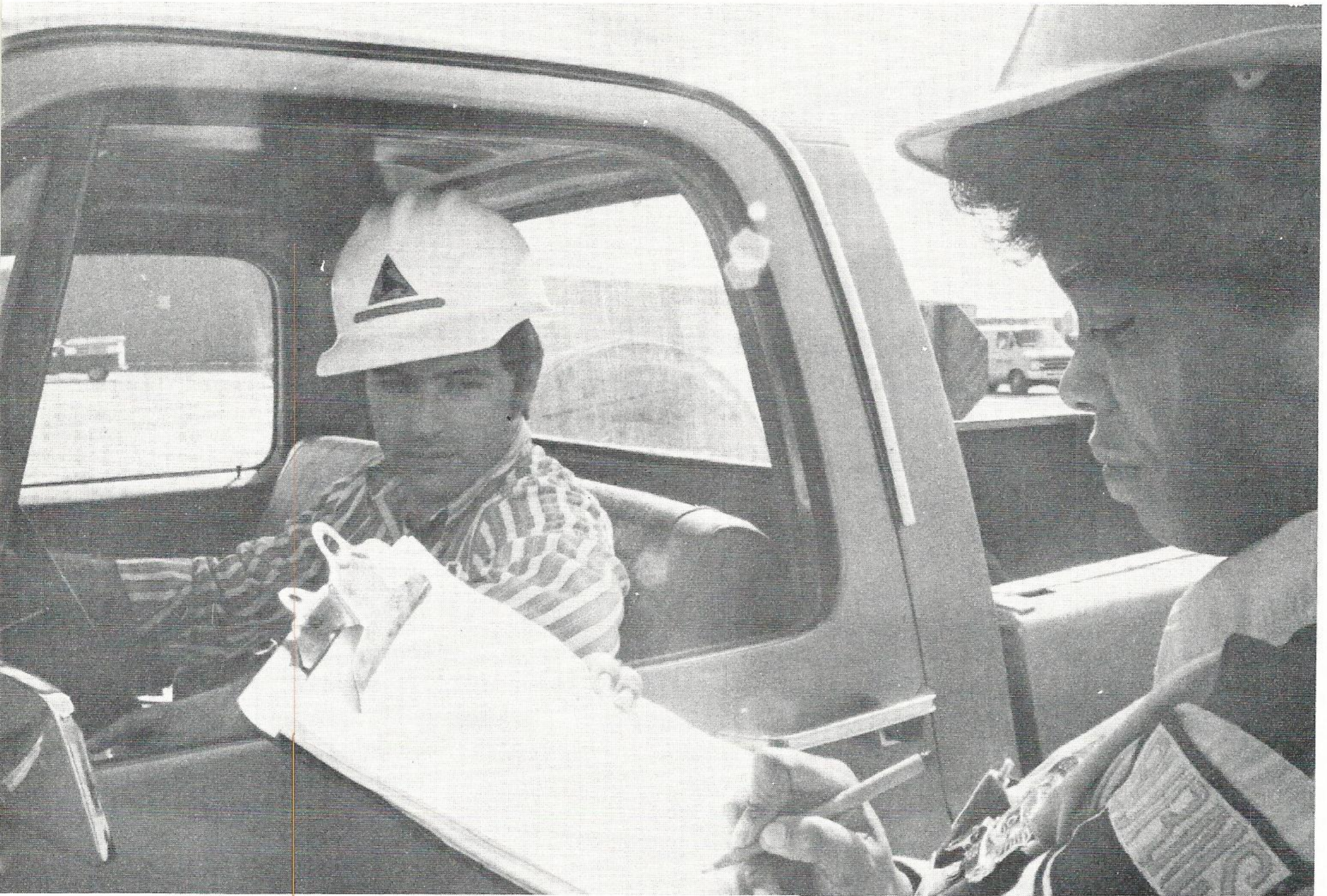
Woody went on to say there will be areas within the protected area with higher security. These areas will be classified "Vital Areas." Access to these areas will be limited to those employees and visitors who have functions requiring their presence in the area.

Other security measures taken will include background checks of all personnel who will have

reason to be closely associated with the plant, either as frequent visitors, or as operating personnel. The NRC is studying the procedure for the background checks and has not decided if they, as an organization will handle the check, or whether it will be done by the company, or by another national agency. "Screening of personnel is a major concern of ours as security personnel," Woody said, "but just how this will be carried out for River Bend is still under study."

Woody did say that, geographically, River Bend Station should be easier to secure than some other plants he has seen. "Most of our problems will probably come from hunters hunting illegally on the posted part of the site. When I say hunting illegally, I don't mean the local people or members of the Fancy Point Hunting Club who have their own areas to hunt. I am referring to poachers who are trespassing on the site. Those who live and hunt in West Feliciana find these poachers to be as much a problem as we do. They don't want them here either."

Woody concluded the interview by saying, "I hope that visitors to the plant will understand the requirement we have to limit access to the plant and even to screen those who do have a need to be in the plant. Security of the plant is our responsibility and we'll do what is required to get the job done."



Security checks must be made of everyone, employees included.

The Unsung Heroes of Pearl Street

Keeping the Main Office functioning so that GSU can go about its business is a story of the unsung heroes of Pearl Street.

Most of us have to be urged to perform routine maintenance on our homes. Painting, scraping, broken glass, even replacing light bulbs that burn out don't always rank high on our list of things we'd like to do. And what about that heating and air conditioning filter you are supposed to replace every month? For some GSUers this routine maintenance is a day by day affair. It has to be that way to keep a 22-story high rise in operating condition.

"People just don't realize what a tremendous job it is to maintain a building like this (the main office in Beaumont), said Jack Kirkland, operations manager. "Our

Building & Grounds Department personnel have to baby sit a structure that has nearly 14,000 square feet of glass, uses nearly 290,000 kilowatt hours of electricity a month, over 10,000 million cubic feet of natural gas a year, and approximately 600 gallons of hot water per day."

Kirkland went on to explain that these figures are just basic figures, and do not reflect what it takes to produce those figures. "B&G personnel have to see that the various pieces of equipment behind those figures are working properly to attain those figures. Then that does reflect the normal operation of this kind of high rise during a

12 month period."

During 1977 the budget for normal operation of the main office in Beaumont was approximately \$300,000. And that does not include payroll expenses. The building, once the "Tallest Hotel" in Texas, goes through approximately 300 fluorescent tubes a month. That means that a good deal of time is spent by B&G personnel just replacing these bulbs. But that is certainly only a small percentage of the work involved.

Gerald Dean, Building & Grounds maintenance supervisor, explained the situation this way. "Just stop and think a minute. Look around you. The lights, the carpets, the fur-



Jack Hamilton, right, hands out assignments for his night shift crew.

niture, the walls, the glass, the elevators, the water faucets, the plumbing in the restrooms, all of this comes under the maintenance forces that work day and night in this building. We actually have two crews which work full time, almost around the clock, to see that this building operates the way it should, so that you and everyone else can work at running the electric utility business.”

Dean went on to explain that the day crew is mainly responsible for immediate work that needs to be done. They make daily checks and rounds to repair equipment, do preventative maintenance on thousands of pieces of equip-

ment, accomplish wiring jobs for added light fixtures, oversee outside contractors such as the telephone company. “Our phone system is constantly in a state of flux with new extensions, moving old ones, and so on,” said Dean.

At approximately four p.m. the evening crew checks in under the guidance of Jack Hamilton, labor foreman. “This crew,” said Dean, “does the majority of the moving that is required as personnel and departments move from one floor to another, or even from one building to another. They also oversee the janitorial services which come in to clean house, they lay new carpeting as

it is directed, and they do many of the odd jobs that are necessary but which can't be done during the day because too many people are in the building.”

“It is phenomenal how many people move in a company this size,” said Hamilton. “We come in and clear out one office, get the furniture and move to the new office, clear that one out, put the old furniture in the new one, and either send the old stuff to salvage, or out to be refinished along with other pieces tagged for refinishing. We lay carpet at this time, clean up, set up various rooms for meetings the next day, make sure the building is safe, that no

Unsung Heroes . . .



Wilson Bryant . . .
A painter's painter.

fires are going somewhere, oversee security, janitorial help and a hundred other things. And we do this with a staff of about five or six men.”

“A lot of our people are very visible,” said J. W. Hemby, utility foreman on the day shift. “Most people in the Main Office have seen Wilson Bryant painting walls, or almost anything else. Ella Lavigne provides a lot of services such as making coffee for meetings, and following up behind meetings. Joe Brumley, Gary Bosse and Luish Winn are the maintenance men and can be found on almost any floor at a given time fixing something. And Christopher Jordan gets called quite often when extra muscle is needed. A “jack of all trades” around here, but primarily an electrician, is Bill Hart. He used to be an appliance repairman before that was phased out, and there is very little that he can’t fix. If it can be fixed, he’ll find a way to do it.”

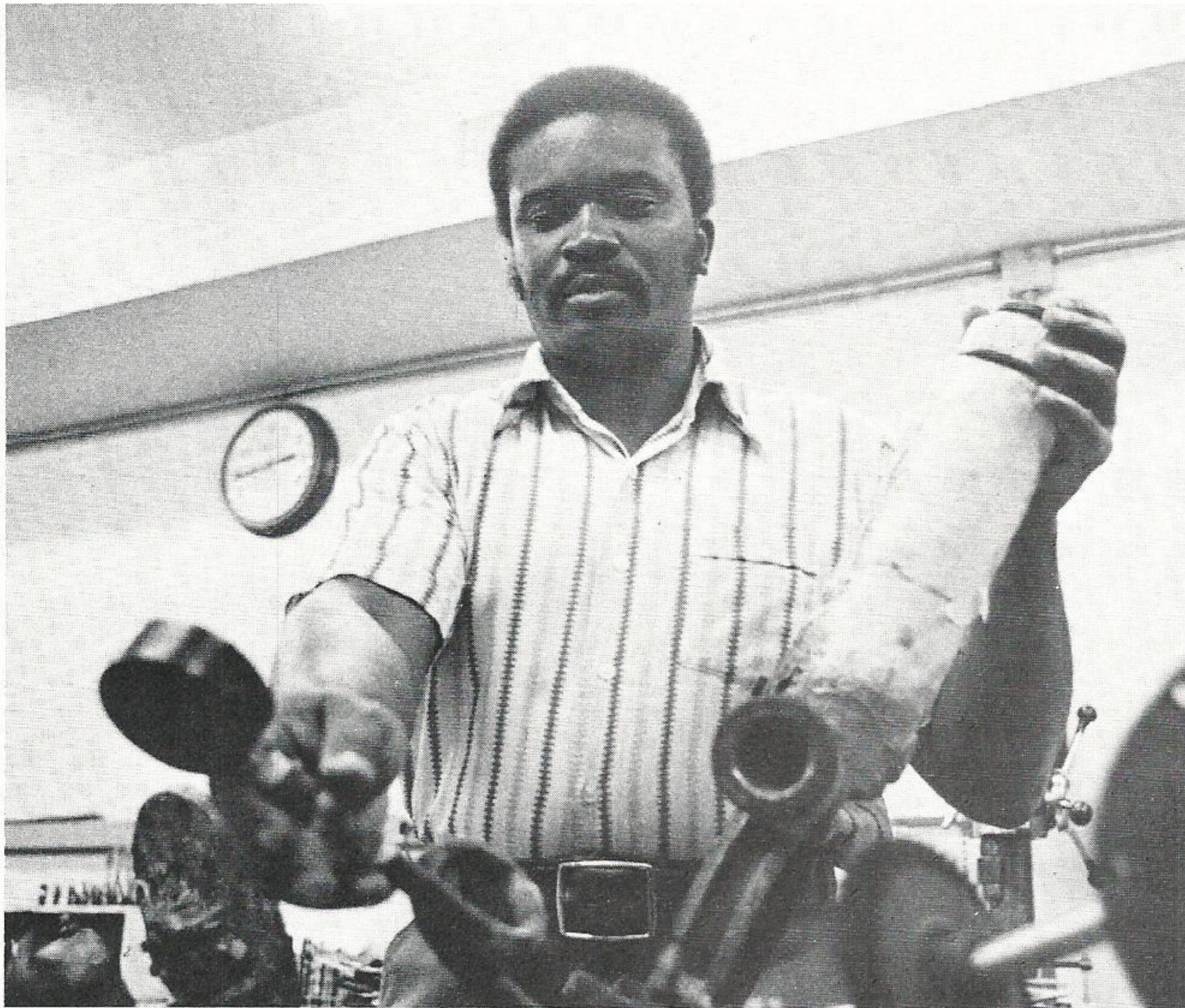
Another very important aspect of B&G takes place down in the “engine room or boiler room.” In the basement area of the MO are the air conditioning and heating systems, and the environmental control system. Two main boilers comprise the heart of the heating

system, and can produce a total output of nearly seven million BTUs. The IDS computer room on the third floor, has a separate 80 ton system for exclusive use designed to keep the humidity a constant 50 percent, and a temperature of approximately 75 degrees at all times. All of this equipment is monitored by an operator. In the day this operator is Wilson Broussard, and at night it is usually George Pickins.

One interesting facet of the building’s operation is that it takes approximately 760 tons of air conditioning to do the job, and 41 percent of the air conditioning output is needed to offset the heat generated by all the lights used in the main office.

“I know one thing for sure,” said Kirkland, “if the air conditioning ever broke down in this building, we could all go home. It wouldn’t take long for the heat to build up to force us all out of here.”

“You know I’m glad to see a story being written about our Building & Grounds people here,” said Hamilton. “These are hard working people and they deserve some publicity. Boyd Wiggins, Cornelius Arline, B. T. Lewis, Mack Wingate, Ike Simms, Pickins and our new man, James Moore, really do a job in this building at night. And not only this building. People really just don’t know how much appreciation these people deserve.”



Luish Winn checks out a malfunctioning valve on the "day side."



Gerald Dean, surrounded by Renee Lewis, Candy Mathis and Debbie Parker.

Dateline:

Hull, Texas

**Population 1,200, give or take a few.
A nice, quiet, place to raise your family . . .
and to work.**

There really isn't anything "super outstanding" about Hull, Texas. It's a nice quiet town off the beaten path . . . sort of between Batson and Daisetta on state Highway 770, about seven miles north of Highway 90, the old Beaumont to Houston route. "We aren't even very big, just 1,200 people, but it's home," said Nobie T. Alford, the lady who "really" runs the local GSU office.

Charles McManus (see Dateline: Sour Lake in last issue) is superintendent of the Hull office in addition to the Sour Lake office. "You've already gotten me so I'll just leave you with them," he told *PLAIN TALKS*.

Hull is manned by four employees, in an office just over the hump of a railroad crossing and next to an empty feed store. "A lot of people wouldn't like it here," said Jerry Brown, serviceman, "but this place grows on you. I came here from Dayton. Dayton is larger than we are you know, they have a hill."

But Brown is quick to point out that Hull is okay by him. "I really prefer a small town like this. I mean a man is more or less his own boss. You do your job, everybody knows you and you know everybody. Your customers are your friends, and that makes a difference."

Brown, his wife Jo-Muriel, and their children, Donald, Wanda, Donna-Jo and Jimbo, like the easy pace of living in the country. "Nobody is looking over your shoulder. I do mostly trouble-shooting type work, and I guess I put about 200 miles a day on my truck. But it's a good job, I've got my freedom and as long as I do the job, that's what counts."

Joe Foreman is another Hull employee who came with reservations. "My wife told me she was going to leave me when we first got the word about transferring here. Now I couldn't drag her away. The kids either. Mary and her four children, Dale, Clarise, Crystal and Jody have all taken Hull to heart. "It really is a nice place

to raise a family," Foreman said.

Another plus for the community is its school system. "I'm on the school board and we have a fine system here. We've got a solid tax base with the oil industry around here, and all our schools (a modern elementary, junior high, and high school) are air conditioned. I'll tell you something else, everybody is friends with everybody else. Somebody can see a GSU truck on the highway and they will wave at you. That's a good feeling. When your customers like you, they also like the company. If they don't like you, you can bet they won't like the company."

Foreman admits to having other job opportunities offered him over the years but has turned them all down. "Why should I accept another job somewhere? I'm satisfied. I like working for GSU and working in Hull."

McManus described Nobie as the only one girl operation in the entire system. "She spends

a lot of time at her terminal and does all the accounting work, turn on and turn offs, handles all cash, the works.”

Nobie is a native of the area and was happy to be transferred to Hull in 1969. She and her husband, Cletis, are avid bow hunters. “I haven’t gotten me a deer yet,” Nobie said, “but I’ve come close.”

The Alford’s don’t have any children, but they do have a family of sorts. “Oh yes, we’ve got a mule, two horses and two jeeps.”

The fourth member of the Hull team was out reading meters in the oil field when *PLAIN TALKS* dropped by, but Van Graham is very much a part of the picture.

Graham and his wife Frances, have three children, Donna, Cindy and Gordon. Like the rest of the Hull staff, they like country living and the freedom you just can’t find in a city environment.

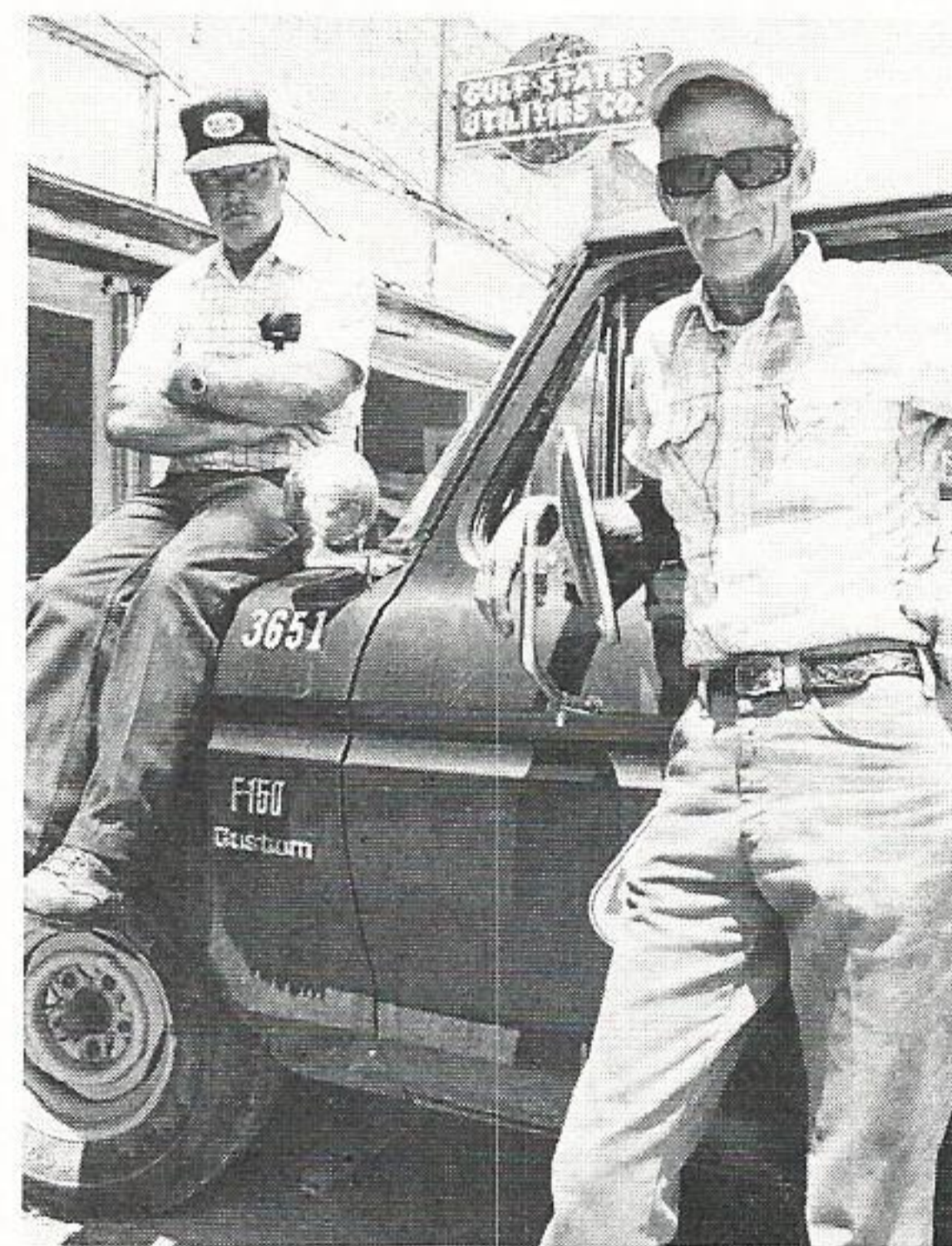
Hull is actually a unique place. It is an oil related town, yet has survived the oil town look. You don’t see any rigs

within the immediate area, but there are thousands of wells producing all around the community.

“I guess oil is what keeps Hull going,” said Nobie. “Mobil, Atlantic Richfield, Texaco and Houston Oil & Mineral are the major industrial customers of the county. We even have a famous person who calls Hull home, Bill Brett. He was inducted into the Cowboy Hall of Fame in Oklahoma City in April.”

Brett was honored for his book, “The Stolen Steers, A Tale of the Big Thicket.”

Joe Foreman and Jerry Moore



Nobie Alford passes the time of day with Bill Brett, author of a western novel which won him a place in the “Cowboy Hall of Fame,” in Oklahoma City.



Vice Presidents Named, Construction Plans Altered By Company's Board

The company's board of directors has elected two vice presidents and an assistant secretary, re-elected incumbent officers, and authorized significant changes in the company's construction program, it was announced by W. Donham Crawford, chairman-elect and chief executive officer.

William F. Malec, former treasurer, was elected vice president and treasurer. William E. Barksdale, former manager of the company's Baton Rouge division, was elected vice president-Baton Rouge division. Patricia Broussard, former economist in the Financial Services department, was elected assistant secretary.

The board amended the bylaws of the company to provide that, as previously announced, Crawford would become chairman of the board effective with the retirement of Floyd R. Smith on July 1, and will continue to serve as the chief executive officer.

The board approved quarterly dividends of 31¢ per share of common stock, the 123rd consecutive dividend payment. Dividends were declared on all series of preferred stock and all dividends are payable June 15, on stock held of record May 24.

Crawford said that the company has undertaken a comprehensive analysis of its construction program and its ability to finance future generating units. Extensive discussion of this matter by the board indicates the possibility of significant changes in the program to be followed.

Construction of the first coal-fired unit at the Nelson Station site near Lake Charles will be resumed this summer, with a scheduled completion date of 1982, Crawford said.

He added that resumption of construction work at the River Bend nuclear power plant near St. Francisville is dependent on rate relief in Louisiana and financial participation by electric cooperatives interested in joining the project.

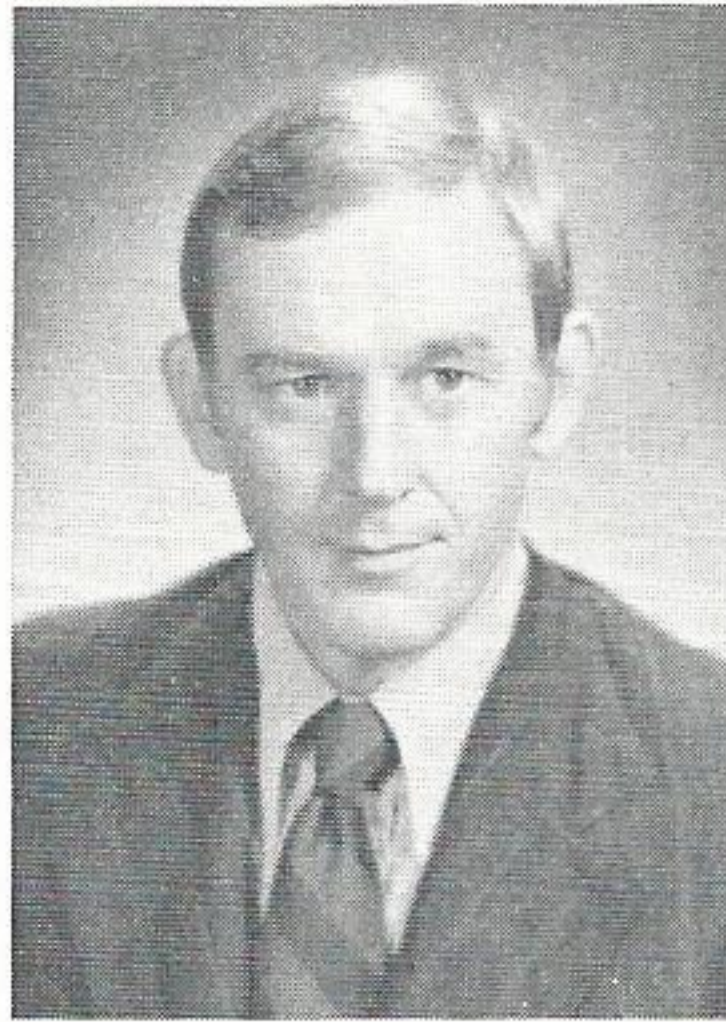
Crawford said, "The magnitude of the necessary financial commitment and the present uncertainty of the company's ability to finance the entire River Bend project prompts our im-

mediate consideration as to the advisability of decoupling construction of the second nuclear unit from the first unit. This would mean concentrating financing and construction efforts on River Bend No. 1 only, and would indefinitely defer the second unit until financing uncertainties are eliminated."

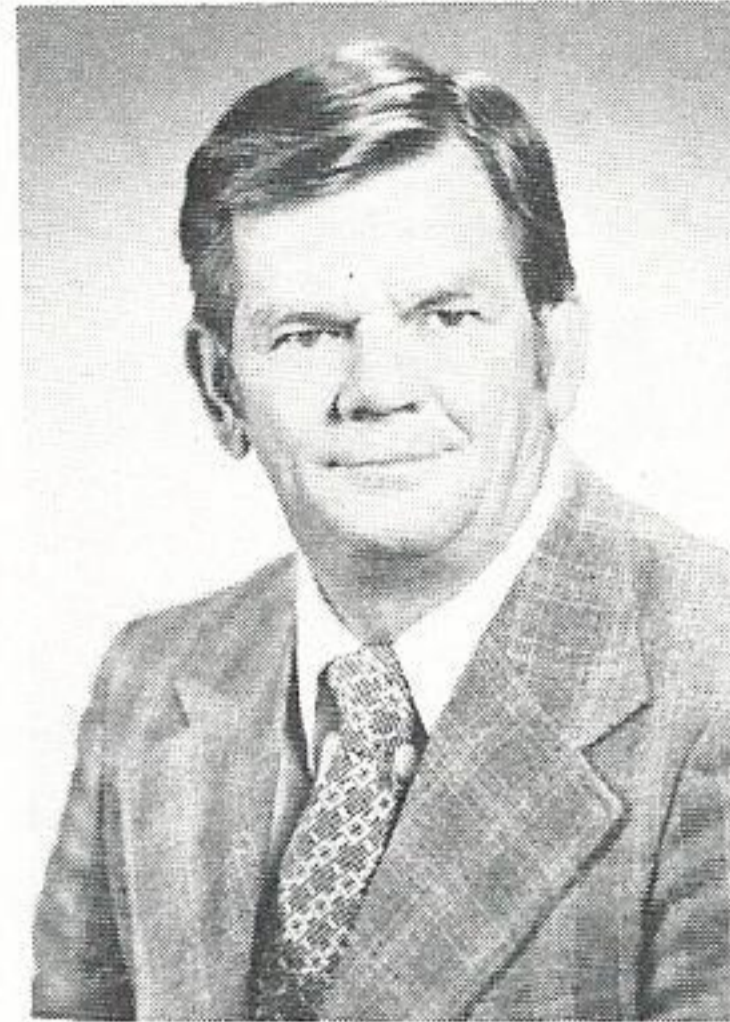
Regarding the planned Blue Hills nuclear project in Newton County, presently scheduled for operation in the late 1980's or early 1990's, the



A shareholder talks business with W. D. Crawford



Bill Malec



Bill Barksdale



Patricia Broussard

uncertainties indicate that the company promptly consider either cancelling or indefinitely deferring both of these units.

“The schedule for these units is so distant that the ultimate cost is difficult to define,” Crawford said. “At a later date, more accurate cost estimates will be feasible when it is known what changes, if any, will be made in the government’s ill-defined nuclear power policies. This would be taken into account, along with the company’s ability to finance the units.

Regarding both the River Bend No. 2 unit and the Blue Hills project, discussions will be initiated promptly with suppliers and others and a decision will be made in the near future as to the company’s course of action.

In any event, Crawford said that the Blue Hills site, some 10 miles south of Toledo Bend reservoir, would be retained, and in all probability, licensed for future use. He added that the environmental and socio-economic studies that have been completed in the site area and the limited work already done, will continue to be assets for the company.

He added that future construction of a lignite-fired unit is a possibility, utilizing the lignite reserves the company holds in Texas.

About 350 shareholders heard Crawford review “a somewhat improved” financial year for the company, due to the first normally hot

summer in several years and the sale of some assets that would not be productive in the near future.

Crawford emphasized that the lack of a fair and workable national energy plan - after more than a year of discussion in Congress - continues to be among the nation’s leading problems and a significant cause of inflation.

With regard to GSU, he said that the lack of rate relief in Louisiana and the apparent lack of concern on the part of the Louisiana Public Service Commission about the adverse impact on the state that continued unresponsiveness will cause, is GSU’s leading problem.

Crawford stated that, based on current predictions, and even with maximum success in the company’s energy conservation programs, GSU’s power capacity will have to be tripled by the year 2000. Despite the difficulty of financing coal and nuclear power units, Crawford said that they are expected to be the energy sources that will bridge the gap between the gas-oil era of generating electric power and the as-yet unproved technologies of the 21st century.

Malec joined GSU in 1975 as assistant treasurer and was elected treasurer on September 1, 1976. A native of Broadalbin, N.Y., he previously worked in financial and accounting departments of Mid-Continent Telephone Corporation in Hudson, Ohio, and the Cleveland Electric Illuminating Com-

pany of Cleveland, Ohio. Malec received his B.S. degree in general business from Niagara University, where he graduated cum laude. He holds a Master of Business Administration degree in finance from Indiana University.

Barksdale joined GSU in 1957, after receiving his degree in electrical engineering from Mississippi State University. He held engineering positions in Beaumont and Port Arthur before being promoted to operating superintendent of the electric department in Baton Rouge in 1973. He had been manager of that division since April 16, 1978.

Broussard came to GSU in 1975 as an economist in the Financial Services department. A native of Beaumont, she attended the University of Colorado and received her degree in economics from Lamar University. She has also studied at the Universidad Iberoamericana in Mexico City and the Universitaet von Koeln in Cologne, West Germany.

Floyd Smith Ends 43 Year Career; Receives Responsive Ovation from Audience

Floyd R. Smith, retiring chairman of the board and principal executive officer for the past eight years, received a responsive ovation from shareholders and board members alike at the 53rd annual meeting held in the main office in Beaumont.

Smith called the meeting to order, commenting, "This is the last meeting I will call to order as your chairman. I have been proud to serve as your principal executive officer for the past eight years." He wished the company well in its future efforts, and concluded by presenting "your new chief executive officer, W. Donham Crawford."

Crawford, chief executive officer and chairman-elect, praised Smith as a man who has accomplished much on the local, state and national level. "I have worked with him for many years and would like to take this opportunity to recognize him, and his efforts. He has done much for Gulf States, and for the industry on a national level."

Smith, with 43 years of service, provided the leadership necessary for the company to survive some of its most turbulent years. It fell to him to lead GSU through severe gas shortages, the oil embargo, skyrocketing inflation and a complete change in the character of the investor-owned electric utility industry from sales promotion to all-out conservation. Conversion of generating units from gas to oil, the scramble to contract for additional gas and oil in the face of fuel curtailments, plans for a reliance on coal and the decision to go nuclear were important challenges faced by Smith during his tenure.

A native of San Francisco, Smith came to GSU in 1935 following his graduation from New Mexico State University with a Bachelor of Science

degree in electrical engineering which he obtained "with honors." His first assignment was as a substation helper in the Navasota Division.

During the next 27 years Smith held assignments in Beaumont and Port Arthur. He progressed through various classifications in engineering and operations, reaching the Operating Superintendent level in 1954. In 1963 he was promoted to the executive level as operations manager in Beaumont. Late that same year he transferred to Baton Rouge as the division manager. He was elected vice president-Baton Rouge Division in 1965, and in 1967 was transferred back to Beaumont as vice president-Division Operations.

Smith became executive vice president in September, 1969, and seven months later was elected president and principal executive officer of the company. He has been a director since 1965 and became chairman in 1973.

Along the way Smith managed to further his management skills by com-

pleting the Georgia Tech Public Utility Executive Program in 1957, and the Harvard University Advanced Management Program in 1962. He has been an active civic worker, particularly in the areas of United Appeals where he is a trustee and served as general campaign chairman for North Jefferson County in 1974 and as president in 1975, U. S. Savings Bond drives where he served as area campaign chairman in 1976 and 1977. He has served as a director for the Beaumont Chapter of Red Cross for six years and was its chairman in 1972. He has served as a director of Chamber of Commerce in Baton Rouge and Beaumont, and in Rotary Clubs in Baton Rouge, Port Arthur and Beaumont serving as president of the West Beaumont club in 1962-63.

Other honors include being named Engineer of the Year by the Sabine Chapter of the Texas Engineering

(Continued on page 15)



Floyd R. Smith opens last shareholders meeting as Chairman of the board of directors of Gulf States.

State Senate Subcommittee Supports GSU

It has been recommended by a Louisiana State Senate subcommittee on nuclear reactors, that construction on River Bend Station, and two other nuclear generating facilities in the state, proceed without delay and with all reasonable and practicable speed.

Claude B. Duval, chairman of the Senate Committee on Natural Resources, issued a seven page statement urging that preventative steps be taken now by Louisiana's electric utilities, just as GSU and other state utilities have been advocating, in order to prevent a possible electric energy shortage by the 1980's.

The report, based on testimony from 21 witnesses whose collective experience and knowledge crossed many interests and professions, is entitled "A Report On Nuclear Power In Louisiana."

The committee reports, "It has been estimated that of the total electrical consumption in the state in 1976, Louisiana Power & Light and Gulf States Utilities, together, supplied approximately 79 percent of the total demand (LP&L, 50 percent, GSU 29 percent). In that these two utilities, the largest suppliers of electricity in the state, propose in the future to generate much of their electricity through nuclear capability, and in light of the electrical energy shortage projected for consumers, the importance of nuclear energy to offset the shortage becomes apparent."

In the concluding statements, the committee strongly urged, ". . . that the three plants planned or under construction in Louisiana should proceed to completion without delay and with all reasonable and practicable speed . . . It is the advised opinion and recommendaiton of this subcommittee that nuclear power in Louisiana be endorsed as VITAL to the economic and social well-being of the citizens of the State."

Floyd Smith . . .

Society and Distinguished Alumnus from New Mexico State University, College of Engineering, 1977, and being listed in "Who's Who in America." Professionally, he served as president of the Southwest Atomic Energy Associates for eight years, the Texas Atomic Energy Research Foundation for two terms and the Southeastern Electric Exchange. He has served as a director of the Edison Electric Institute, Electric Energy Association, Southeastern Electric Exchange, and the National Association of Electric Companies. He currently serves as a director at First Security National Bank, First Security National Corporation, Texas Research League and Beaumont Community Foundation.

Smith is married to the former LaFrae Blythe of Las Cruces, N.M., and the couple has two daughters, Mrs. Marion Katherine Crain of Beaumont, and Miss Virginia Helene Smith of Houston.

Smith retires from active duty on July 1, but will serve as a Consultant to the Directors and to the Management for a period of two years.

Employment History:

7-25-35 Substation Helper		Navasota
6- 1-36 Estimator - Distribution Dept.		Beaumont
8-16-36 Student Engineer		Beaumont
5- 1-37 Estimator		Beaumont
5-16-40 Estimator & Planning		Beaumont
9- 1-41 Distribution Engineer		Beaumont
6- 1-43 Engineer		Port Arthur
1- 9-49 Engineer - System		Beaumont
5- 1-49 Senior Engineer		Beaumont
4-16-50 Operating Supervisor		Port Arthur
6- 1-54 Operating Superintendent		Port Arthur
6- 1-56 Operating Superintendent		Beaumont
1- 1-63 Operations Manager	Executive	Beaumont
11- 1-63 Manager-Baton Rouge Division	Executive	Baton Rouge
1- 1-65 Head Baton Rouge Division	Executive	Baton Rouge
2-10-65 Vice President-Baton Rouge Division	Executive	Baton Rouge
9- 1-67 Vice President-Division Operations	Executive	Beaumont
9- 1-69 Executive Vice President	Executive	Beaumont
4- 1-70 President and Principal Executive Officer	Executive	Beaumont
6- 1-73 Chairman of the Board of Directors and and Principal Executive Officer	Executive	Beaumont

Company Launches Energy Watch Campaign to Inform, Aid, Customers

A new, strongly supported, marketing and information program is being launched this month by the company as part of the nation wide "National Energy Watch" campaign designed to bring about an awareness of the importance of using our energy resources as efficiently as possible.

NEW, as the program is known, was developed for national participation by the Edison Electric Institute for the electric utility industry as a means to help the American homeowner realize the conservation potential of his home. Internally, GSU has developed a comprehensive plan to best carry out the objectives of the program.

Employees will be made aware of the program through a series of com-

munications avenues including monthly news letters, *PLAIN TALKS*, audio visual presentations, employee purchase plans of equipment and materials for improving thermal efficiency in their homes, special brochures and more. Though the primary emphasis will be placed on existing homes, new homes will be covered as well.

W. Donham Crawford, chief executive officer and chairman of the board-elect, has strongly indicated his support, and that of top management, for the program. "I cannot stress strongly enough, how important the success of the National Energy Watch program is to us. We are acutely aware of the soaring cost of producing the electricity needed for our

customers, and those we know that will be added to our system. By supporting this program, by making our own employees energy conscious, and bringing this awareness to our customers, we can lower the demand for electric energy and thereby reduce the requirements for new and costly generating facilities in the future. We will have to have new generating facilities to meet the growth of the area we serve, but through NEW we can hold our construction needs to a lower level, and reduce construction and operational expense in the long run. That not only means a savings to us, but for our customers as well."

As the NEW program begins to roll internally, externally GSU will increase its advertising messages to the public. Trade allies will be approached and urged to join in, the news media will be invited to participate, and specially trained personnel will be sent into the field as energy consultants to help our customers help themselves.

Special financing procedures will be established for employees with allowances for wiring, the purchase of high E.E.R. equipment, insulation and other materials to attain NEW standards. Employee teams will contact local, state and national officials to support NEW. Schools, civic clubs, and other organizations will be contacted by Speakers Bureau personnel with programs.

It's a full scale blitz by the company, and the EEI to tell a story that needs to be told. By doing so, the homeowner can hold down his monthly electric bill, Gulf States can reduce its demands for future generating capacity, and the availability of our precious natural resources can be extended.

NEW is a program with something for everyone. You'll be hearing more about it.



Tom Winslow, left, vice president of Goodwin, Dannebaum, Littman & Wingfield, the company's advertising agency, jots down notes while Rufus Mier (Lake Charles) explains the campaign strategy for the National Energy Watch (NEW) program to Charles Glass, vice president-Consumer Services.

Deaths



Jim Robinson

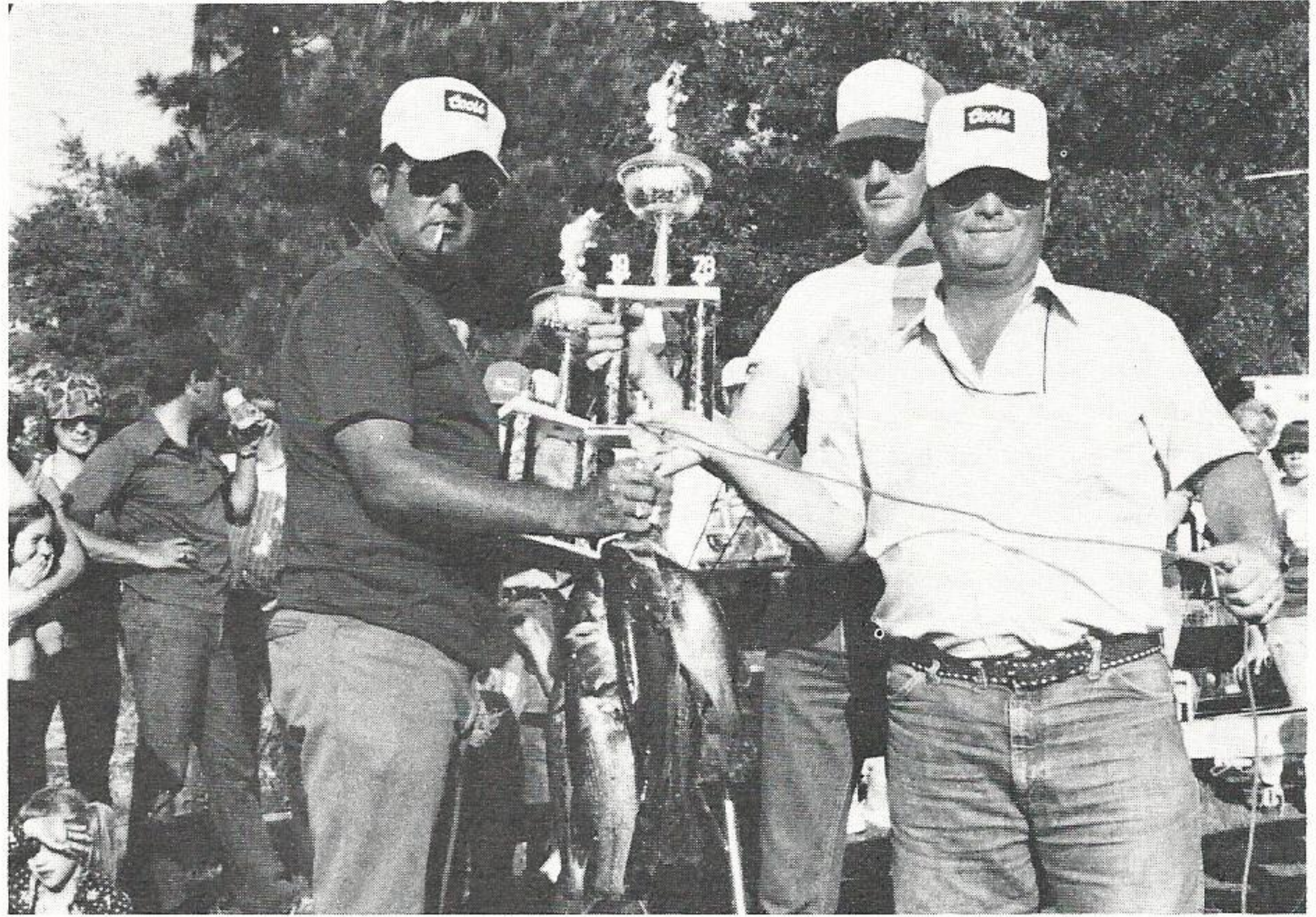
Jim Robinson, retired GSUer from the Orange Accounting Department, died in April.

Robinson had been retired since April, 1962, after 39 years of service. He was a native of Franklin, La., and was originally employed with the Orange Light & Water Company. This company later was absorbed by GSU.

Charlie Butler, retired Production Department employee in Baton Rouge, died in April.

Butler retired in 1962 after 31 years of service with the company. He was employed in 1931 as a laborer in Baton Rouge.

A native of West County, Tex., he attended schools in Louisiana and Illinois. He also attended Southern University prior to employment with Gulf States. Before joining GSU he had worked with various oil companies in the Beaumont and Baton Rouge areas. He was a veteran of the Army with service during WWI.



Lonnie Stalsby, Howard Greer, team champions

Stalsby, Greer Win Fishing

Lonnie Stalsby and Howard Greer teamed to "out fish" 38 competing pairs in the 4th Annual Live Wires Bass Tournament held at Scott's Marina on Toledo Bend Reservoir. Stalsby-Greer weighed in 10 bass with a total weight of 18 pounds nine ounces.

Chairman Wes Smith said the turnout was "the best ever" for this event. "And the weather was perfect."

Trophies and prizes were awarded to the first three teams. Prizes only were given to the next four teams. The big bass trophy went to Tom Crowe with a five pound, three ounce beauty.

Mickey Wilson and Jerry Cessna finished second in the team event with eight

fish at 14 pounds, two ounces, and Arnold Jones and Terry Godwin were third at 12 pounds, eight ounces.

Officials responsible for judging the contest were Joel Mallet (Port Arthur), Kent Dubose (Sabine Station) and Joel Jeffcote (Conroe). Their task was not an easy one as the teams brought in a total of 102 fish with a total weight of 156 pounds, four ounces.

Gary Kramer will be the chairman next year, and has tabbed W. B. McMorris as his safety representative. It seems McMorris pulled Dubose from the water after a slight accident. But all ended well with the traditional "fish fry."

THRIFT PLAN

Investments made by the Trustee during April, 1978 covering employee deductions and company contributions through March, 1978 were as follows:

Purchase of Common Stock:

Number of Shares	Total Cost	Average Cost Per Share
24,807	\$331,793.66	\$13.3750

The Trustee also made the following deposit with the First Security National Bank of Beaumont. \$130,243.82

Amerine Is Top Bowler

Over 100 Gulf States bowlers from throughout the System gathered in Port Arthur recently for the 17th Annual GSU Bowling Tournament held at the Brunswick Holiday Bowl. Tournament chairman, Curt LeBlanc, said the bowlers represented one of the largest tournaments to date.

Tom Amerine, Beaumont, emerged as a triple winner with high scratch series (650), singles champion (710 with handicap), and high series with handicap (710). Port Arthur's Corene Hickman and Rae Allen were double winners. Hickman and Allen teamed for the doubles title with 1337, and Hickman won high series with handicap for women with a 669, while Allen took first in singles with a 661.

In the team event, the Oreo Cookies of Lake Charles rolled a 2416 to take top honors, edging out Rick's Four of

Port Arthur with 2388. Members of the winning team were Allen Guillotte, Rita Thibodeaux, Sherman Gilmore and Horace Gradney.

Joan Tilley of Beaumont won high game with handicap with a 250, while Harvey Bowden won the men's high game with handicap with a 269. Emery Fruge of Lake Charles fired a 242 scratch game for high honors.

Port Arthur's Thad Patin was all events men champion with a 1884, good for a 209 average over nine games with handicap.

In a special event to open the tournament, Port Arthur Division Manager Summa Stelly defeated local IBEW 2286 President, George Crawford, in a roll-off. Both got seven pins with their first ball, but Stelly struck with his second ball and left Crawford to pay for the refreshments that were ordered.

1978 Tournament Results

Team Event

1. Oreo Cookies (Gradney, Guillotte, Thibodeaux, Gilmore, Lake Charles, 2416.
2. Ricks Four, Port Arthur, 2388.
3. Big Shots, Port Arthur, 2387.
4. F.F.F., Beaumont, 2354.

Doubles

1. Hickman, Allen, Port Arthur, 1337
2. Badeaux, Badeaux, Port Arthur, 1241
3. J. Simpson, John Tilley, Beaumont, 1237
4. Patin, Droddy, Port Arthur, 1203

Singles, Men

1. Amerine, Beaumont, 710
2. Zeigler, Baton Rouge, 656
3. D. Theobald, Beaumont, 645
4. B. Burnhardt, Beaumont, 628
5. W. Thomason, Beaumont, 626

Singles, Women

1. Allen, Port Arthur, 661
2. S. Passmore, Beaumont, 636
3. R. Thibodeaux, Lake Charles, 602
4. J. Robinson, Port Arthur, 578
5. S. Burnhardt, Beaumont, 575

High Game (Hcp) Women

1. Joan Tilley, Beaumont, 250

High Game (Hcp) Men

1. Harvey Bowden, Port Arthur, 669

High Series (Hcp) Women

1. Corene Hickman, Port Arthur, 669

High Series (Hcp) Men

1. Tom Amerine, Beaumont, 710

High Scratch Game (Men or Women)

- Emery Fruge, Lake Charles, 242

High Scratch Series (Men or Women)

- Tom Amerine, Beaumont, 650

All Events, Women

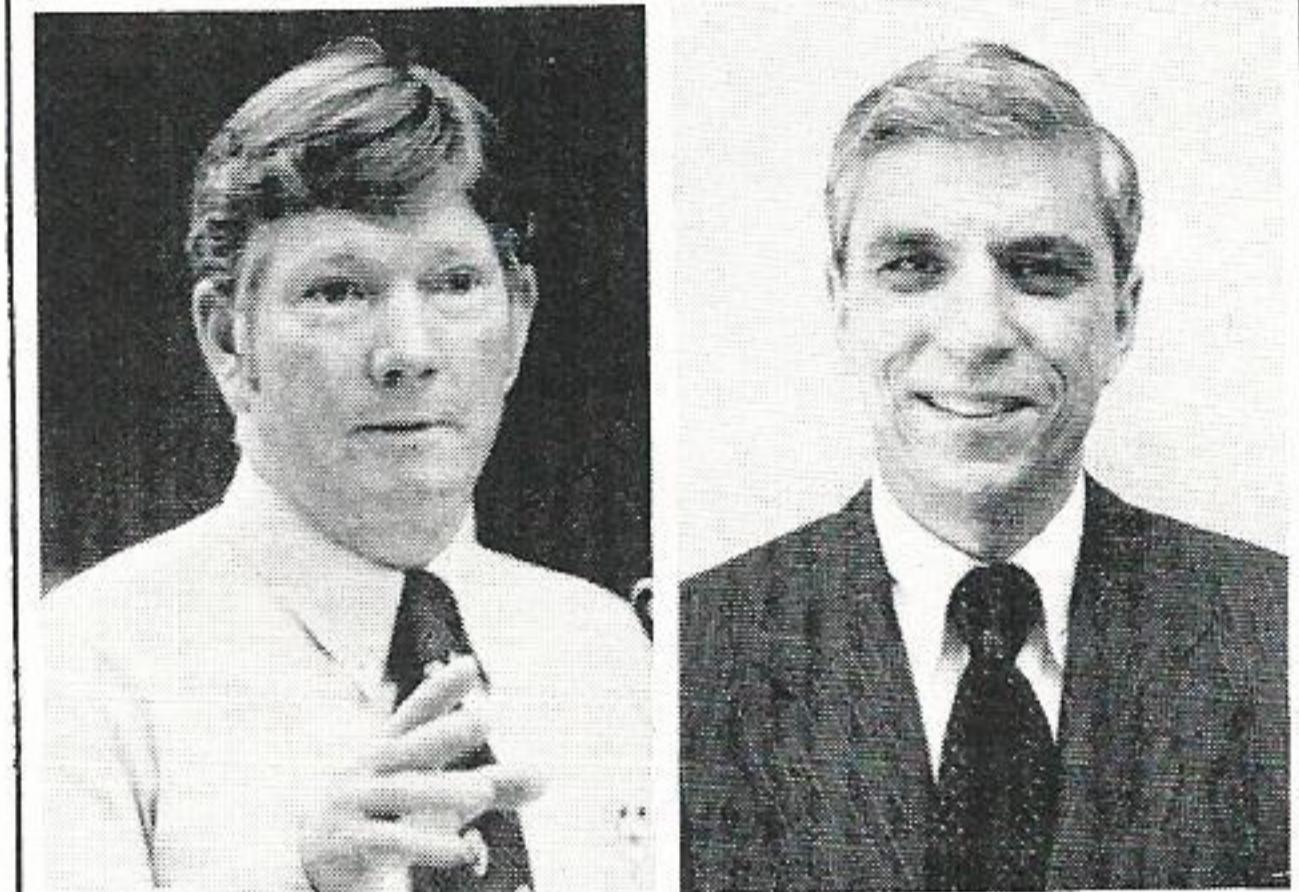
1. Sharon Passmore, Beaumont, 1922
2. Becky Wagner, Beaumont, 1790
3. Joan Tilley, Beaumont, 1775
4. Rita Thibodeaux, Lake Charles, 1750

All Events, Men

1. Thad Patin, Port Arthur, 1884
2. David Theobald, Beaumont, 1833
3. Sherman Gilmore, Lake Charles, 1832
4. Horace Gradney, Lake Charles, 1830

Pollans, Controller

Les Moor Heads Varibus



Moor

Pollans

Leslie M. Moor and Al Pollans have assumed new duties with respect to Varibus operations.

Moor, GSU vice president-Administrative Services and formerly vice president of the GSU owned subsidiary, Varibus, Corp., has been elected president. He succeeds Thomas A. Page who resigned as executive vice president of GSU and president of Varibus, to become executive vice president and chief operating officer of San Diego Gas & Electric.

Moor's promotion became effective May 1.

Pollans, GSU vice president-Accounting Services, was elected controller of Varibus.

In other action, the Varibus board of directors also elected W. Donham Crawford, GSU chief executive officer and chairman of the board-elect, and Moor to the board.

from the industry

CITY OFFICIALS IN El Paso are seriously thinking about the possibility of buying out El Paso Electric Company in order to reduce rising utility bills and improve service . . . EPEC officials call this ridiculous and point out that Austin and San Antonio, both city owned utility systems, have higher rates than El Paso . . . additionally EPEC doesn't want to, and isn't about to sell . . .

AN APRIL DECISION by the U.S. Supreme Court may curtail ability of nuclear critics to block power projects with the aid of sympathetic lower Federal courts . . . nuclear policy is not for the judiciary to decide said high court . . .

ENERGY SECRETARY James Schlesinger told a gathering in Houston that this nation must have economic growth and that growth must have first claim to existing energy resources . . . predicted difficult transition period as we switch from oil based economy to other fuels . . .

THIS NATION IS likely to be short of power by 1979 . . . new Edison Electric Institute president William McCollam said government policy must be changed . . . "because of governmental indecision and uncertainties in licensing process, nuclear power plants begun today may not be available to produce power until a dozen more severe winters have passed . . .

A STRONG GROWTH rate in national energy consumption, use of electricity in particular, is indicated until the year 2000 . . . Electric Power Research Institute forecasts a total energy growth of between 3.2 and 3.5 percent for the next five years . . . this is only slightly less than before the oil embargo when energy was not a problem . . . predicted growth rate translates into 27 billion barrels of oil per year at a time when we can least afford it . . .

U. S. NUCLEAR POWER plants continue to prove their worth . . . "nuke" plants generated 30 percent more electricity in 1977 than in the past . . . they also widened their cost advantage over fossil fueled plants . . . Atomic Industrial Forum study shows nuclear generation cost approximately 1.5 cents per Kwh . . . coal cost 2.0 cents and oil was high at 3.9 cents per Kwh . . .

IT MUST BE nice for the natives but heart breaking to us in the U.S. . . . Taiwan just completed its first nuclear generating plant, including all paper work, in just 68 months . . . GSU has been trying for longer than that and so far we have a hole in the ground . . . there must be some reasonable way to speed up construction of nuclear plants . . . day is fast approaching when this nation realizes, maybe too late, the advantages of the friendly atom . . .

ELECTRIC POWER RESEARCH INSTITUTE has a new president . . . Floyd L. Culler, Jr., takes over helm succeeding Dr. Chauncey Starr who has been elevated to vice chairman of the board . . .

SUN DAY . . . though the sun itself was lacking in Beaumont and the GSU system . . . was celebrated in early May in almost every part of the country . . . President Carter was in Colorado and told the crowd that \$100,000 million would be allocated next year in federal budget for solar and renewable source energy projects . . .

FOLLOWING THE TRAGIC deaths of 51 workers in West Virginia when scaffolding collapsed during work on a cooling tower, three other utilities have suspended construction activity on towers at other sites which have contracts with the same firm . . . Research-Cottrell . . .

NUKE PLANT WORK SUSPENDED by San Diego Gas & Electric . . . board of directors stopped all work except that which is necessary to preserve site and water supply for future use . . . decision made due to legislative inaction in exempting Sundesert project from California's nuclear fuel cycle laws and an order by California PSC denying authorization for company to invest any more funds into the project . . .

COGENERATION SOCIETY FORMED to serve as focal point of government, industry and utilities for all activities associated with cogeneration . . . EEI's Glenn H. Lovin will chair the organization . . .

AMONG 24 LARGE ELECTRIC utilities, average industrial/large commercial rates increased 19.1 percent from December, 1976 to March, 1978, while residential rates rose 12.8 percent during that period . . . these facts were gleaned from a survey conducted by National Utility Service (NUS), an energy cost consulting firm . . . "This pattern of weighing rate increases heavily against industrial/large commercial users has been evident for the past several years and indicates the degree to which state public service commissions have appeased consumer lobby groups . . ." the study showed.

SENATOR JAMES McCLURE (R-Idaho) calls the President's National Energy Plan "irrational" and "dangerous" because it would actively discourage domestic oil production through its pricing and tax structures and because it has conceded the "moral issue" of nuclear power to opponents of nuclear generation . . .

Could You Recognize the "Cafe Coronary?"

With two martinis under his belt, his steak sandwich done to a turn, the executive is in deep, animated conversation with his two luncheon companions. Suddenly, his expression changes to wide-eyed terror. He stops talking in mid-sentence. Eyes bulging, he turns pale, then blue. Clutching his chest, he pitches from his chair and collapses on the floor. Within four minutes he is comatose; within seven he is dead. There remains only the tragic task of informing his wife that her husband has succumbed to an apparent heart attack.

But the executive did not die from a heart attack. Worse, he died quite needlessly. Had his companions recognized the cause of his seizure and taken simple, swift action, he would not only be alive but well enough to complete his meal. For he was a victim of which coroners call asphyxiation due to occlusion of the airway by food — literally strangling to death on a piece of meat that had lodged in his windpipe. Because it occurs most often in restaurants, food-inhalation choking has become known as the "cafe coronary." And since executives are among the most frequent diners in restaurants, the cafe coronary is the bane of the businessman's lunch.

As deadly as a dose of cyanide, food inhalation has claimed the lives of the vice president of General Motors, a senior attorney in Union Carbide's legal department and real-estate tycoon Robert Futterman — as well as Chinese diplomat T. V. Soong, baseball slugger Jimmy Foxx, band leader Tommy Dorsey and Joan Patricia Skakel, the sister-in-law of Robert Kennedy. It is also believed to have killed singer "Mama" Cass Elliot.

Each year, cafe coronaries strike down from 2,500 to 4,000 diners, more than are killed by air crashes, firearms

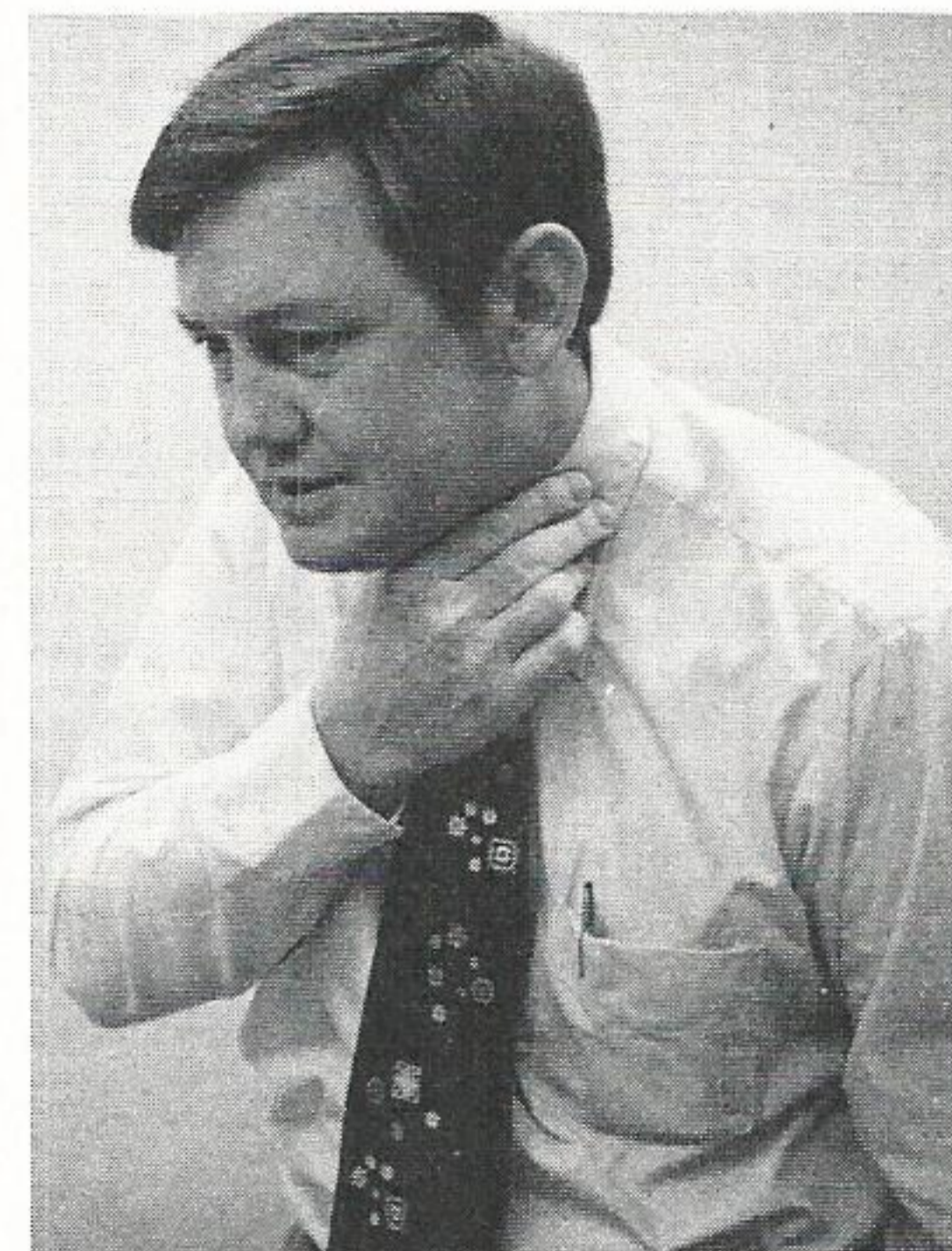
or lightning. In fact, choking on food is the nation's sixth most frequent cause of accidental death. Yet its symptoms are so closely akin to heart attack and stroke that the number of victims may be vastly greater than the 3,900 who, the American Red Cross estimates, will die of it this year.

The problem is that bystanders do not recognize an attack of food inhalation for what it is. The symptoms — from the look of severe distress on the victim's face to the clutching of his chest in panic — are so similar to heart attack that a friend's first impulse is to loosen the victim's clothing and call a doctor. But with cafe coronary cases, time is of the essence.

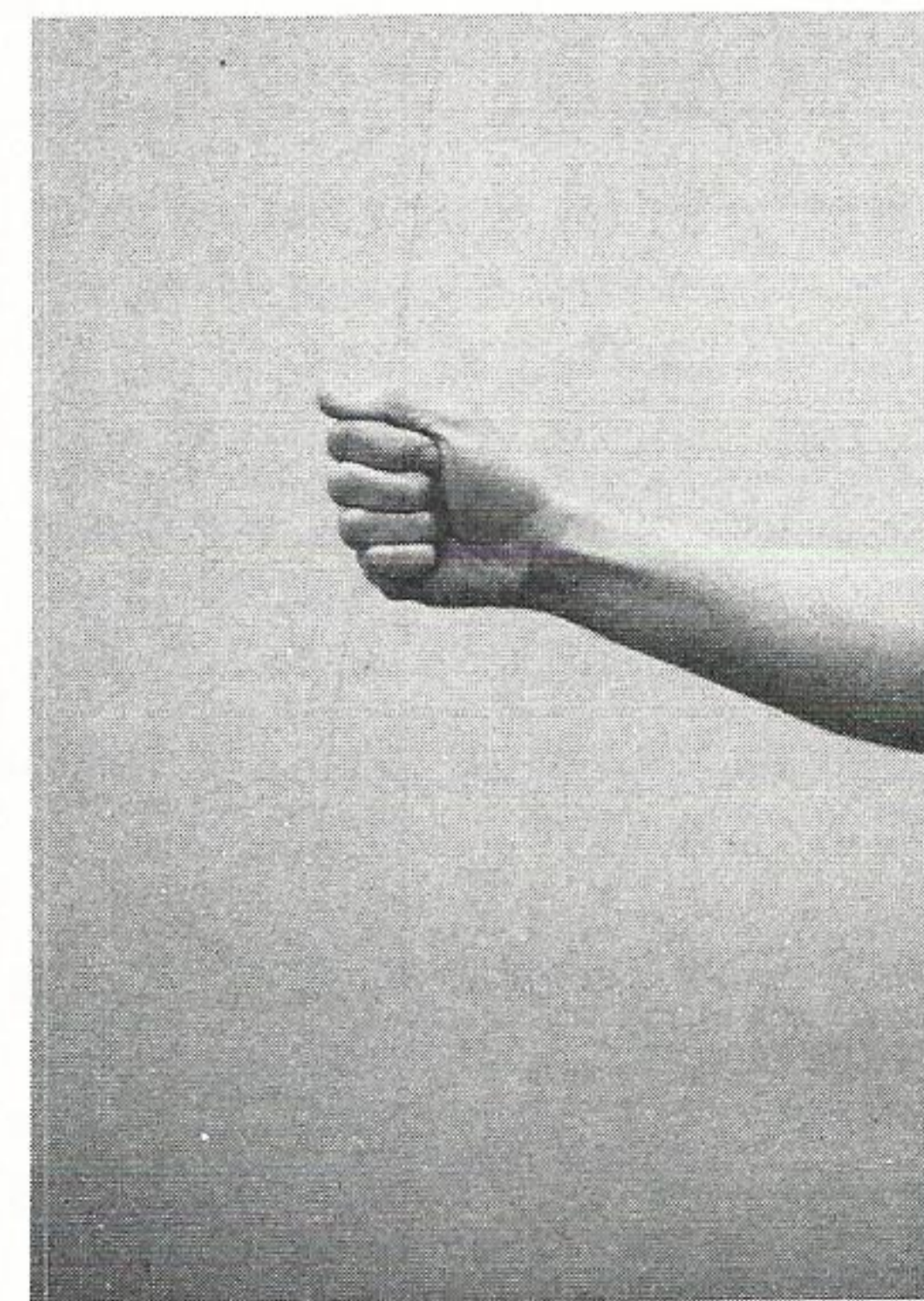
From the moment a piece of food lodges in the windpipe and cuts off the patient's oxygen, he has, at the outside, seven minutes to live. Even if the food is expelled in five minutes, he may still suffer permanent brain damage due to anoxia (lack of oxygen).

The one sure way to identify cafe coronary when it strikes is to ask the victim, "Can you talk?" For even heart attack patients can communicate as long as they are conscious. Not so the person who is choking, panic-stricken and totally powerless to help himself. Applying mouth-to-mouth resuscitation is a waste of precious time. Nor has anyone with an obstructed windpipe ever survived a trip to the hospital. It is the food blockage that must be removed immediately. Dr. Henry Heimlich, director of surgery at the Jewish Hospital in Cincinnati, has originated the "Hug of Life" and the "Solo Maneuvers" to do just that.

We offer you these in hopes that you never have to use them, but if you should find yourself or a friend choking, they could save a life.

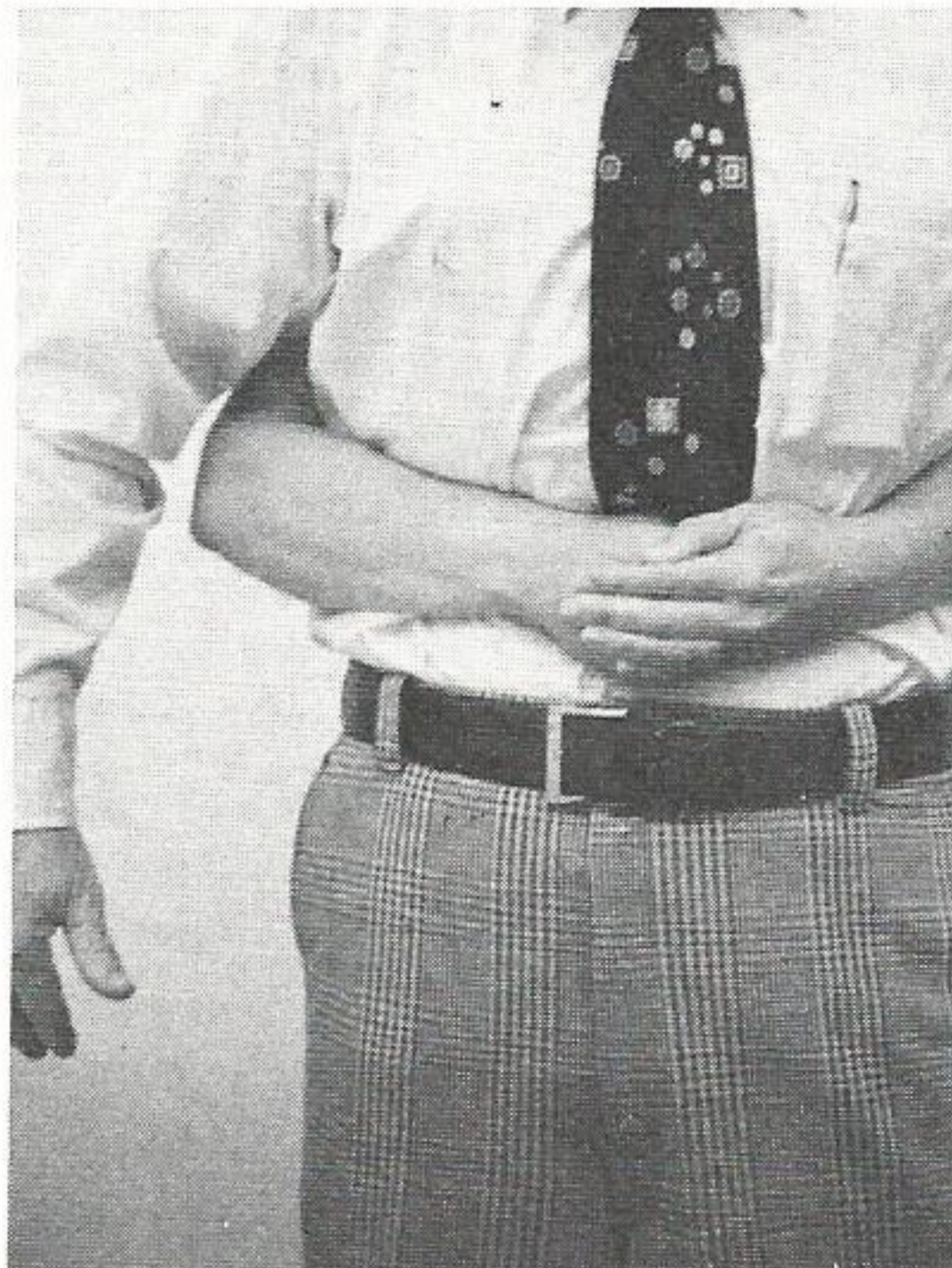


The distress signal of victims choking on food is the reflex action of the hand going to the throat in an attempt to clear the windpipe. If you see this, try and get the victim to say something . . . if he can't speak it is a "cafe coronary" in progress. Heart attack victims CAN speak.

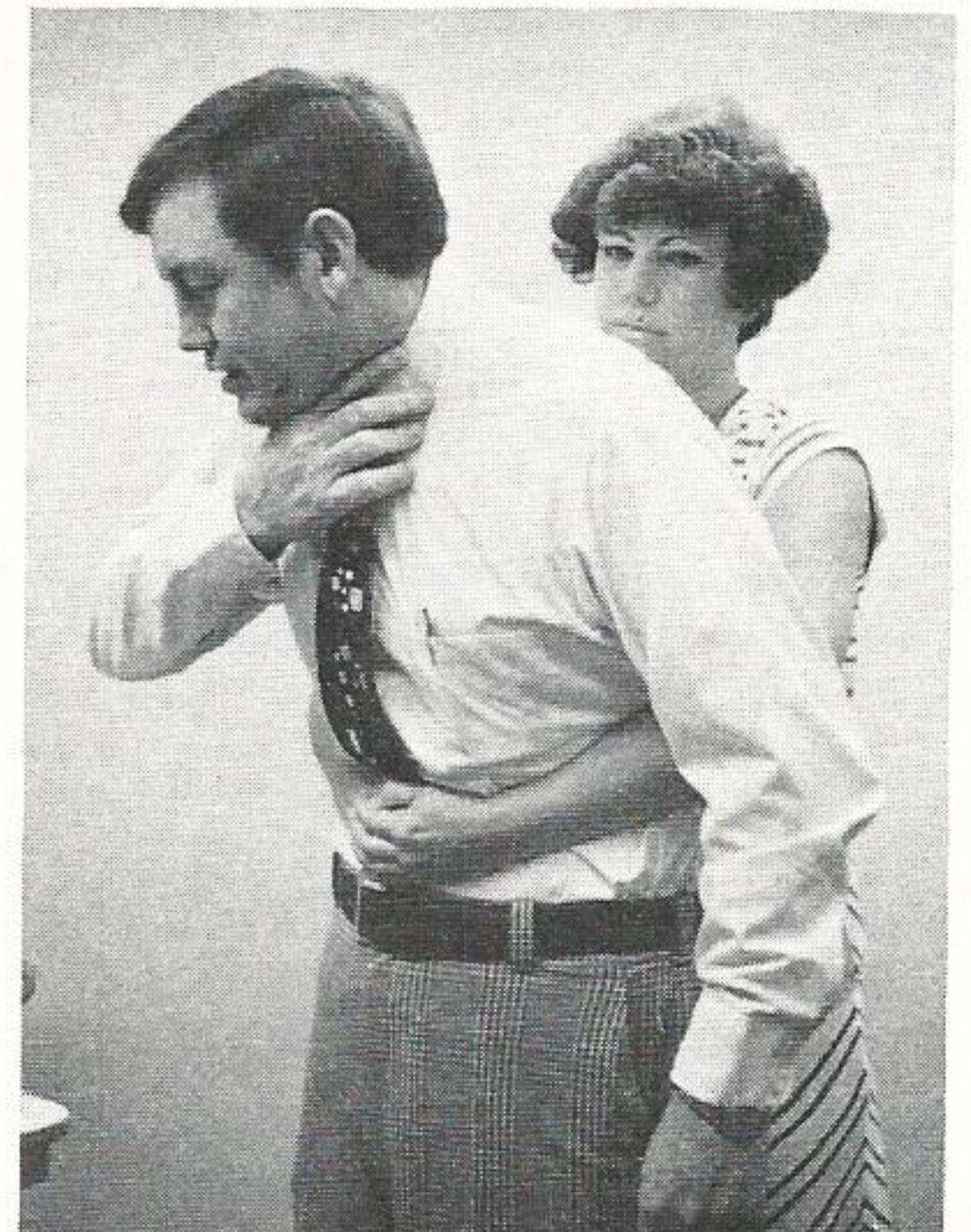




Stand the victim up. Place your fist, thumbside against the body, slightly above the naval and between the rib cage.



Cover the fist with the palm of your other hand. Now you are ready to exert pressure with sudden tugs, pulling hard against the victim's abdomen.



The sudden tugs will force air out of the lungs into the windpipe literally blowing the obstruction free and allowing the victim to breathe again.



The same procedure can be used on yourself if you find yourself in trouble and no one knowing what to do. This technique has saved many lives, and it could save yours. Study and practice these illustrated steps. You never know when it could save your life, or the lives of your family.

People on the Move

George S. Cannon, manager-Electric Operations, Baton Rouge Division, has been transferred to Beaumont and promoted to manager-Plant Engineering, Power Plant Engineering & Design Department.

Cannon, a 30-year veteran of the company, was employed in 1948 as an engineer. He was promoted to manager-Electric Operations, in August, 1973. As manager of Plant Engineering Cannon will implement an engineering operation to work with plant design personnel to modify existing facilities and to engineer new ones as they are needed.

Cannon is a veteran of the Army and World War II service. He is married to the former Rita Braud of Aruba, Dutch West Indies. The couple has four children, Cynthia Tedrick, Cheryl Czerniewski, Layne and Stewart.

He is a graduate of Louisiana State University with a degree in electrical engineering, and is active in numerous civic and professional organizations, including the Greater Baton Rouge Chamber of Commerce where he serves as vice president; a director of Junior Achievement, and serves as a representative on the East Baton Rouge School Board Services.

In connection with the formation of the Public Affairs Department, headed by Jack Worthy, vice president, the following promotions have become effective.

James S. Turner, director-Public Relations, has been promoted to manager-Communications. **James P. Towers**, assistant to the vice president-Baton Rouge, has been promoted to director-Governmental Affairs-Louisiana. **Cecil Johnson**, staff attorney, Beaumont, has been promoted to director-Governmental Affairs-Texas. **William "Bill" Benedetto**, consumer communications representative, Baton Rouge, is promoted to communications coordinator.

A native of Baton Rouge, Turner joined the company in 1951 in Baton Rouge after working as a reporter for the Bogalusa Daily News and Public Relations officer for the Louisiana Veterans Affairs Department. He served as assistant advertising director until 1956 when he moved to Beaumont as supervisor of publicity. He was promoted to director of Advertising and Public Relations in 1968. He was named director-Public Relations in 1973 when the Marketing Department was formed.

Turner is a 1948 graduate of Louisiana State University, and has served as an Air Force pilot in WWII. He has completed the utility management course at the University of Michigan, and is active in civic and professional organizations including present positions as a member of the board of the Beaumont Press Club, the Salvation

Army and the Camp Fire Girls Council.

Turner is married to the former Elaine Middleton of Baton Rouge, and the couple has four children, Michael, Christopher, Leslie Sue and Patrick.

Towers, a native of Denton, Md., joined GSU as a rate analyst in Beaumont. He is a 1957 graduate of the University of Texas.

He is a veteran of the Army having served as a lieutenant in Korea. Towers is married to the former Peggy Fulton of Beaumont, and the couple has two children, James, Jr., and Mary.

Johnson, Towers' counter-part in Texas, is a native of San Antonio. He joined the company in 1976 as staff attorney.

Johnson is a veteran of the Navy, and served aboard a nuclear submarine during the Vietnam conflict. He is a graduate of the Navy's nuclear power school.

Johnson, a graduate of the University of Houston (1976) with a degree in law, is married to the former Susan Burroughs of Houston. He is a member of the American Bar Association, the Texas Bar Association and the Jefferson Bar Association. He is an active member of the U of H Alumni Association.

Benedetto was employed in 1975 as communications representative in Baton Rouge. He is a Baton Rouge native and a veteran in the broadcasting field having started when he was 14. He was in sales promotion with WRBT-TV (Channel 33) prior to joining GSU.



George Cannon



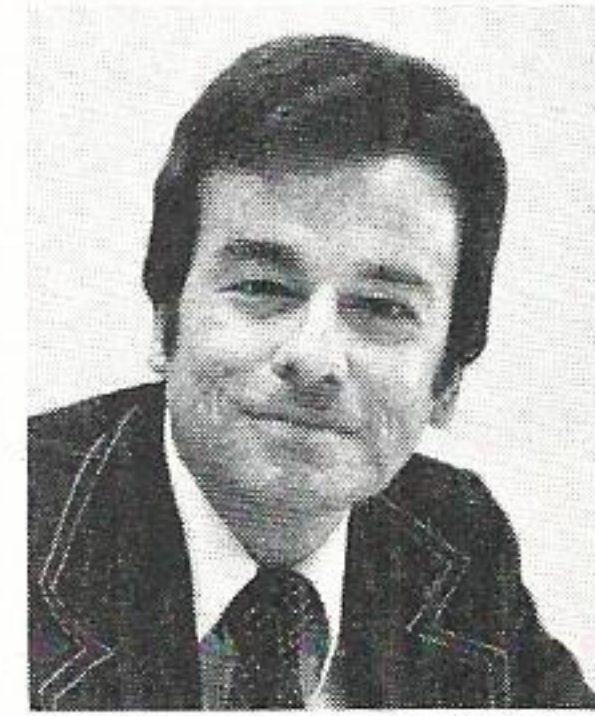
Jim Turner



James Towers



Cecil Johnson



Bill Benedetto



Bennie Hickman

ALSO

He is married to the former Carol Amarello of Baton Rouge, and the couple has three daughters, Rhonda Marie, Melissa and Cynthia. He is active in the Public Relations Association of Louisiana, the Baton Rouge Advertising Club and the Baton Rouge Press Club, the Lions Club AAU Track & Field competition.

Bennie D. Hickman, assistant project engineer-River Bend, has been promoted to director-Civil & Structural Engineering and transferred to Beaumont.

Hickman, a native of Alexandria, was employed in 1971 as a civil engineer. He was a captain in the Army with service in Germany and Vietnam, and is married to the former Matilda "Tillie" Coffey of Lake Charles. The couple has two children, Robert and Robin.

Hickman is a 1966 graduate of McNeese State University with a degree in mechanical engineering, and earned an additional degree in civil engineering from LSU in 1971.

He is a member of the Louisiana Society of Civil Engineers and a registered professional engineer in Louisiana.

Scott Mildred S. Bmt., Promoted Stenographer-Sr-Mat Svs/Ovrll
Kettl Lonnie J Bmt., Promoted Oper Helper (Auxil Oper)-Neches Sta-Opern
Poullard Delores G Bmt., Promoted Mech Helper-Neches Sta-Test
Kunst William C Bmt Promoted Helper-T&D/Labor Crews
Morrison Arthur C Jr. Bmt., Promoted Lineman 1/C-T&D/Line
Johnson Laddie R Orange, Promoted Apprentice-T&D/Line
Eaves Ronald H Pt Arth, Promoted Repairman 1/C-Sabine Sta-Mech
Harris Gail L Pt Arth, Promoted Steno-Sr-Div Acctg/Cust Accts
Jones Julia L Conroe, Promoted Engr Asst-T&D/Engrg
Harrison Russell L III Conroe, Promoted Engr Asst-T&D/Engrg
Rash Jeffery G Huntsvl, Promoted Utility Man-T&D/Line
Smith William A Huntsvl Promoted Apprentice-T&D/Line
Joyce Carolyn C Conroe Promoted Consum Serv Adv-Sr-Div Mktg/Consum Service
Shoemake Wallace A Jr. B Rouge Promoted Mech Helper-W/Glen-Electl
Raybourn James E B Rouge Promoted Mech Helper-W/Glen-Mechl
Rusk Elton R B Rouge Promoted Test Tech 1/C-W/Glen-Test

Hunt Dana L B Rouge Promoted Head Fireman-La Sta-Operns
Patton Lindsey Jr B Rouge Promoted Mech Helper-La Sta-Electl
Heath Joseph A B Rouge Promoted Electri 2/C-W/Glen-Electl
Graham Michael N B Rouge Promoted Electri 2/C-W/Glen Electl
Turnley Charles R Jr B Rouge Promoted S/Sta Mech 1/C-T&D/Substa
Smith Leon B Rouge Promoted Garage Mech Helper-T&D/Garage
Williams Willie Jr B Rouge Promoted Lineman 4/C-T&D/Line
Decker Douglas B Jr B Rouge Promoted Relayman 2/C-T&D/Relay
Starns Conrad E B Rouge Promoted Serviceman 1/C-T&D/Service
Edwards Leon Zachary Promoted Lineman 2/C-T&D/Line
Brandon Dianne N B Rouge Promoted Consum Serv Repr-Div Mktg/Consum Service
Lewis Milton T III L Chas Promoted Apprentice-T&D/Line
Adam Frank L Chas Promoted Helper-T&D/Labor Crews
Elter Terrell G L Chas Promoted Helper-T&D/Labor Crews
Guillory Ivan J Jr L Chas Promoted Helper-T&D/Labor Crews
Devall Gregory M L Chas Promoted Helper-T&D/Labor Crews
St Julien Wilfred Lafay Promoted Truckdriver-T&D/Line



Calvin Hebert



Ron McKenzie

People on the Move

Calvin Hebert and **Ronald McKenzie** have received promotions within the Baton Rouge Division.

Hebert, superintendent-Marketing, has been promoted to manager-Electric Operations, and McKenzie has been promoted to operating superintendent-Electric.

Hebert, an employee since 1962 when hired as an engineer in Port Arthur T&D, is a native of Abbeville. He is a 1962 graduate of the University of Southwestern Louisiana with a degree in electrical engineering, and has completed some post-graduate work in business and engineering.

The Marine Corps veteran has served in both Korea and Japan, and he is married to the former Shirley Foret of Eunice. The couple has three children, Phyllis, Michelle and Lynette.

He is active in civic and professional organizations. He is a registered engineer in Louisiana and Texas, a member of the Louisiana Association of Business and Industry and the Louisiana Industrial Development Executives Association. He is active in Chamber of Commerce work.

McKenzie, a 12 year veteran of the company, was employed in 1966 as an engineer in Lake Charles T&D. He is a 1966 graduate of Oklahoma State University with a degree in electrical engineering.

The Navy veteran is married to the former Dana Smith of Oklahoma City. He is active in the Northwest Lions Club of Beaumont, the Industrial Electric and Electronic Engineers and Live Wires Club.

William F. Cummings and **Ron Lamb** have received promotions within the Personnel Services Department-Beaumont.

Cummings, supervisor-Skills Trainings, has been promoted to personnel administrator. Lamb, nuclear training representative, has been promoted to coordinator-Skills Training.

Cummings was employed in 1976 as nuclear training coordinator in Personnel Services in Beaumont. He became supervisor of Skills Training in 1977.

He is a native of Stroud, Okla., and is a veteran of the Navy where he underwent extensive nuclear training.

Lamb was employed in 1977 as a nuclear training representative. He is a native of Humansville, Mo. He is married to the former Marcia Shiveman of El Dorado, Mo., and the couple has two children, Ronald and Erica.

Lamb is a veteran of the nuclear Navy having served eight years aboard the Nuke Boats.

Sandra F. Richard, stenographer-senior in Quality Assurance Department, is promoted to stenographer-executive.

Richard is a native of Port Arthur and, as executive steno, will handle confidential work and supervision of department clerk.

She was employed by the company in 1973 in Beaumont as departmental clerk.

William "Tom" Crowe, project engineer in Beaumont, has been promoted to director-Electrical, Instrument & Controls Engineering & Design.

Robert G. Chapman, electrical design engineer, has been promoted to project engineer-Nelson Coal Project.

Crowe, a native of Shreveport, a 1963 graduate of Louisiana Tech University in electrical engineering, and holder of a master's degree from Georgia Tech in 1964, was employed by the company in 1964.

He is married to the former Virginia Bray of Alexandria, La., and the couple has five children, William, John, Kevin, Maria and Michele.

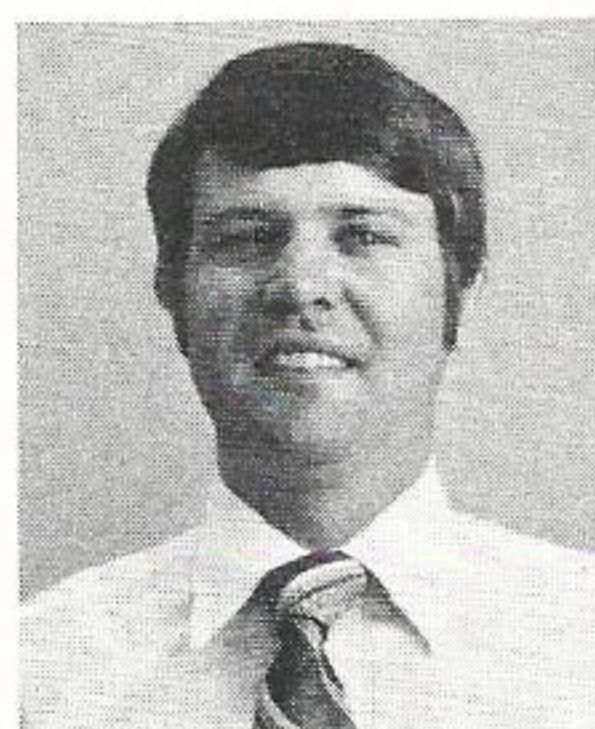
Crowe is active in scouting and serves as an officer in the Knights of Columbus. Crowe is a resident of Lumberton.

Chapman was employed in 1960 as an engineer. He is a native of Oakdale, La., and is married to the former Jo Ann Hutchinson. The couple has two children, Alicia Kim and Tanya Nicole.

Chapman, in his new position, will coordinate the engineering and design of the company's coal unit, Nelson #6.

He is a 1960 graduate of the Southwest Louisiana Institute in electrical engineering, and is a registered engineer in the state of Texas.

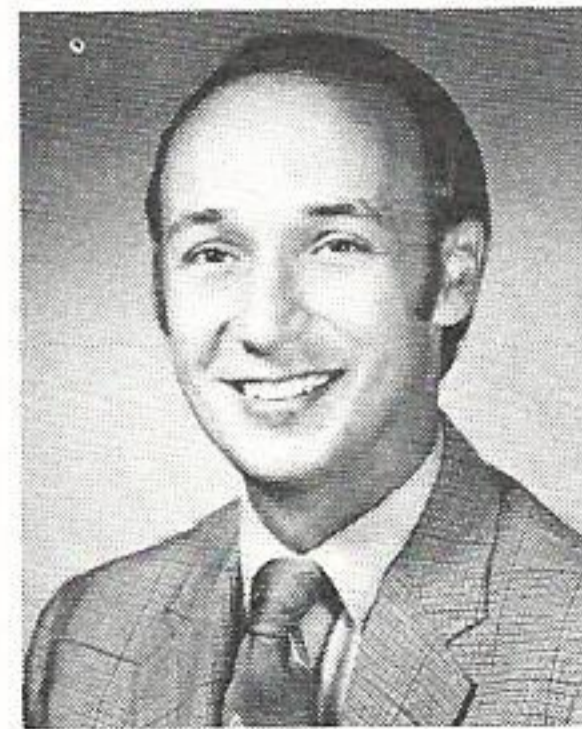
Jimmie L. Grimes, staff analyst in Technical Services Department in Beaumont, has been transferred to Energy Operation and Results in System Production and promoted to supervisor-Fuels Management.



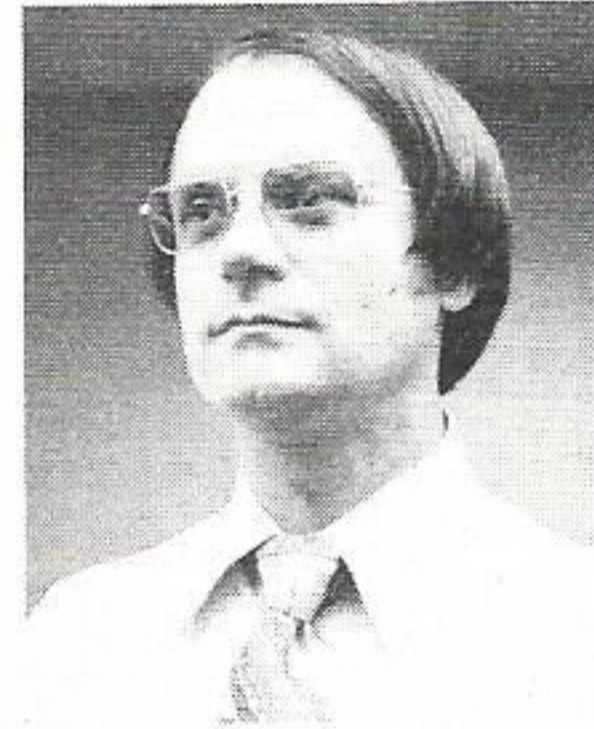
Ron Lamb



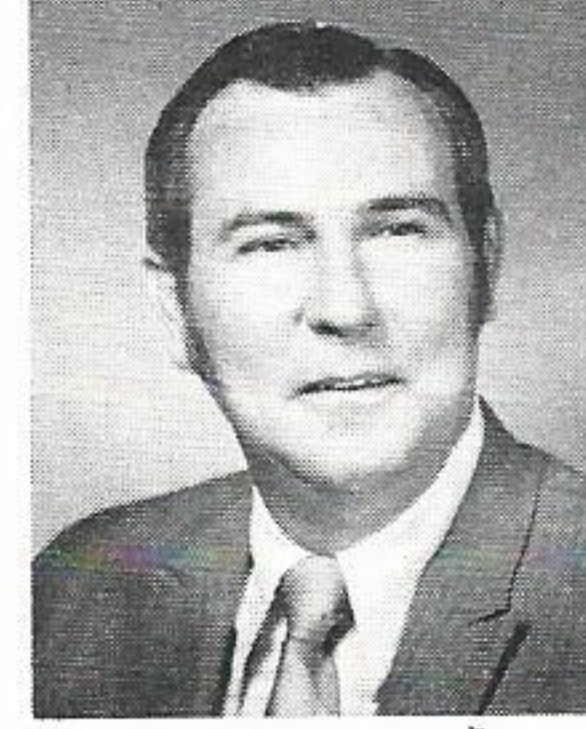
Sandra Richard



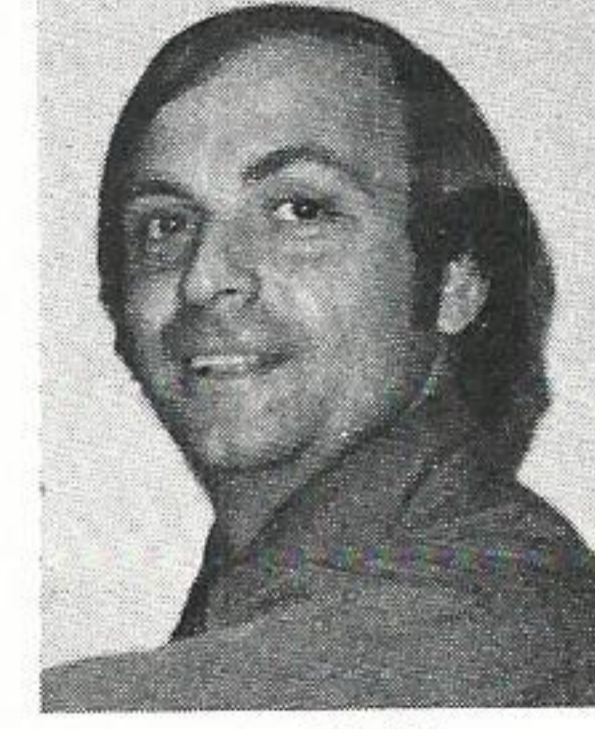
Tom Crowe



R. G. Chapman



Jimmie Grimes



R. J. Guillory

Grimes, employed in 1953 as an engineering helper, will be involved in developing a fuel strategy to minimize average cost of fuel, and short range fuel planning.

Grimes is a native of LaBelle, Tex., and is married to the former Jane Alice Fish of Franklin, Pa. The couple has four boys, Mike, Kelly, Patrick and Casey.

He is a veteran of the Army.

Horace E. Brown, field accountant, has been promoted to senior administrative accountant in the Plant Accounting Section.

A native of Port Arthur, Brown was employed in 1974 as assistant accountant.

Brown is a veteran of the Army where he served as a mechanic on the Vulcan System. He is married to the former Jody Juneau of Groves, and the couple has two children, Chad and Christopher.

Brown is a 1972 graduate of Lamar University with a degree in accounting, and is currently working on his master's degree program.

Robert J. Guillory, cost engineer in Power Plant Construction, Beaumont, has been transferred from Beaumont to Nelson Station and promoted to construction supervisor.

A native of Lake Charles, Guillory was employed in 1977. As supervisor he will be responsible for starting and completing all construction projects at

the Nelson Station facility in Westlake.

Guillory is married to the former Diana Marie Gary of Sulphur. The couple has two children, Robert and Tracey.

He is a 1973 graduate of McNeese State University with a degree in civil engineering.

James W. Simpson, purchasing agent, Beaumont, has been promoted to Project Material Services coordinator.

Simpson, employed in 1969 as assistant purchasing agent, is a 1966 graduate of Lamar University with a degree in business. He is a native of Silsbee and a veteran of the Army with service in Vietnam.

Simpson is married to the former Martha Anne Cook of Silsbee, and the couple has two daughters, Amy Elizabeth and Robin Anna.

Simpson is a member of the Sabine-Neches Association of Purchasing Management and a deacon of the First Baptist Church in Silsbee.

Gary E. Diamond, operations quality assurance supervisor, has been promoted to project quality assurance supervisor in Beaumont.

In his new position Diamond will be responsible to formulate a quality assurance program for the Roy S. Nelson unit #6, the company's first coal fired unit.

The 17 year veteran of the company was employed in 1961 as a test technician at Louisiana Station. He is an Air Force vet, and is married to the former

Joanne Alello of Baton Rouge. The couple has three children, Rick, Keith and Dawn.

John M. May and **Wayne L. Huff**, test foreman and master test technician at Louisiana Station, have received promotions at the Baton Rouge plant.

May has been promoted to supervisor-Accounting and Administration, and Huff has been promoted to test foreman.

May, "Maxie" as he is known, is a native of McComb, Miss. He was employed by the company in 1938 as an assistant storekeeper.

He is married to the former Milda Sartin of McComb, and is a four year veteran of the Air Force with service during WWII. He is also an active 32nd Degree Mason, and a member of the American Legion.

Huff, an employee since 1950, is a native of Baton Rouge.

He is married to the former Gay LeBlanc of Baton Rouge, and the couple has four children, Donald, Kenneth, Janet and Nancy.

Huff is a 1965 graduate of LSU with a degree in general studies, and is a veteran of the Navy with service during WWII. He is a member of the American Legion, board of directors of the Kilowatt Klub, a member of the Baton Rouge Amateur Radio Operators Club, 1977 chairman of the United Way campaign for the Baton Rouge Division and a licensed amateur radio operator.



James Simpson



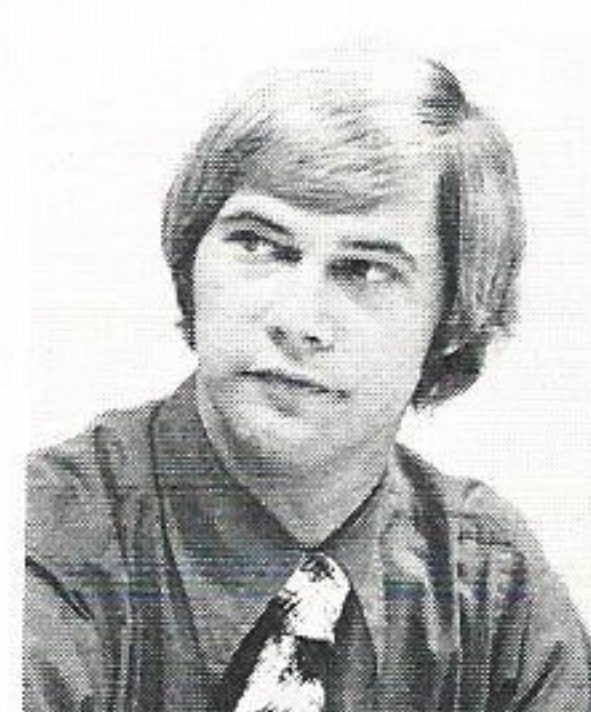
Gary Diamond



John May



Wayne Huff



Robert Garrot



"Chip" Knowles

People on the Move



L. S. Davis

Robert J. Garrot, administrative accountant, Accounting Services, has been transferred to Fuel Services as fuels coordinator.

As coordinator Garrot will be directly involved in buying all fuel oil for the company's generating plants.

Garrot came to GSU in 1974. He is a native of Baton Rouge and a 1973 graduate of LSU with a degree in accounting. He is a three year veteran of the Army.

He is married to the former Judith Ann Conner of New Orleans.

Garrot is active in the Beaumont Slow Pitch softball league.

Rodney D. Rogers, engineer in Power Plant Engineering and Design, has been transferred to River Bend Project and promoted to technical supervisor.

Employed in 1977, Rogers will now direct activities performed by the plant engineering and technical staff required to support startup and operation of River Bend Station.

Rogers is a native of Lafayette and is married to the former Cynthia Nelson of Lafayette. The couple has one daughter, Valerie Michelle. Rogers is a 1971 graduate of LSU with a bachelor's degree in mechanical engineering. He received his master's degree in 1973.

Lawrence S. Davis, engineer in Baton Rouge T&D, has been transferred to Division Marketing and promoted to industrial engineer.

Davis, an employee since 1975, is a native of Springfield, Mo. He is married to the former Harriet Anne Deane of Springfield.

As industrial engineer he will coordinate activities between the company and industrial customers in the Baton Rouge Division.

Davis is a graduate of the University of Missouri-Rolla, with a bachelor's degree in electrical engineering.

Lewis D. "Chip" Knowles, engineer in Beaumont T&D, has been transferred to the Division Marketing Department and promoted to industrial engineer.

A native of Beaumont, Knowles is a 1971 graduate of Lamar University with a degree in electrical engineering. He is an Army veteran, and is married to the former Marilyn Ann Yarrow of Nederland. The couple has one son, Matthew.

Knowles is an active member of Industrial Electric and Electronics Engineers, and is an associate advisor for Explorer Post 2053 in Nederland.

Leonard H. Ernst, general line foreman in Lafayette, retires in June after 42 years of service with the company.

Ernst, was employed back in 1936 as a groundman in Lake Charles. He became a truck driver a year later and was transferred to the substation crew in 1938. In early 1947 he had progressed to lineman first class, and later that same year was promoted to substation foreman.

A native of San Antonio, Ernst attended St. Edwards University in Austin. A gifted ball player, he spent two years on the semi-pro circuit before moving to Lake Charles.

Ernst is married to the former Elaine Verret of Lake Charles and the couple has seven children. They are Barbara, Cheryl, Debra, Marguerite, Albert, Leonard, Jr., and Elizabeth. The Ernst children have provided to keep him busy in his retirement with 12 grandchildren . . . so far.

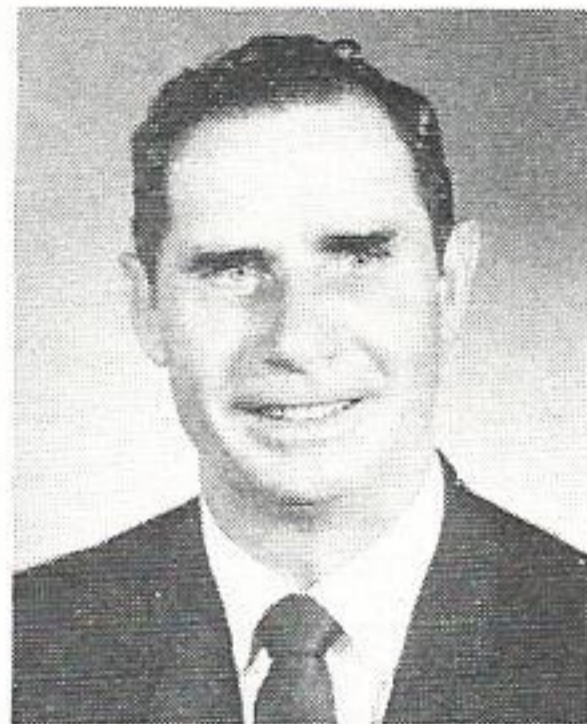
Retirements



Leonard Ernst



Eugene Wall



Louis Sanchez



E. W. Shaffer, Jr.

Louis G. Sanchez, Gas Department-Baton Rouge, retired June 1, after more than 39 years of service with the company.

Sanchez, a native of Baton Rouge, was employed in 1939 as a helper in the Gas Department.

He is a veteran of the Army Air Force with service during WWII, and is married to the former Dorothy Collinsworth of Muncie, Ind.

Sanchez is a graduate of Catholic High School in Baton Rouge, and a member of St. Anthony Catholic Church.

Noah W. Perego, Building & Grounds Department in Port Arthur, has retired after 33 years of service with the company.

Perego, a native of Newton, was employed in 1945 as an operator's helper in the old Lakeside Power Plant in Port Arthur. He was promoted to operator in 1947 and became watch engineer in 1950. He also served as substation operator before going to Building & Grounds Department in 1955.

Eugene S. Wall, serviceman 1/C in Woodville T&D, retired in June after 37 years of service with the company.

Wall, employed in 1941 as a helper in Beaumont T&D, is a native of Beaumont and a graduate of Kirbyville High School. He became an apprentice in T&D in 1943 and lineman in 1944. He progressed through the various classifications attaining lineman 1/C in 1947. He was transferred to Woodville and became a serviceman in 1950.

Wall is a veteran of the Army.

Eugene W. Shaffer, Jr. division substation operator in Baton Rouge T&D, retires in June after 36 years of service.

Shaffer, a native of Baywood, La., was employed in 1942.

The Louisiana National Guard veteran is married to the former Leah Aucoin of Hope Villa, La., and the couple has two children, Mrs. Brenda Fairchild and E. Wilson Shaffer.

Shaffer attended LSU and serves on the Board of Deacons of the Florida Baptist Church.

Service Awards

1978

**Two hundred ninety one employees
are honored for 10, 20, 30, and 40
years of service to the company**

Baton Rouge Service Awards

10 Years



10 YEARS—(left to right) Ronald J. Bordelon, Charles E. Echard, Ralph J. Gremillion, Thomas W. Fabre, Dale M. Mayeaux. Second row (left to right) Victor J. Elmer, Walter L. Gilbert, Barry F. Glover, Norman R. Lee.

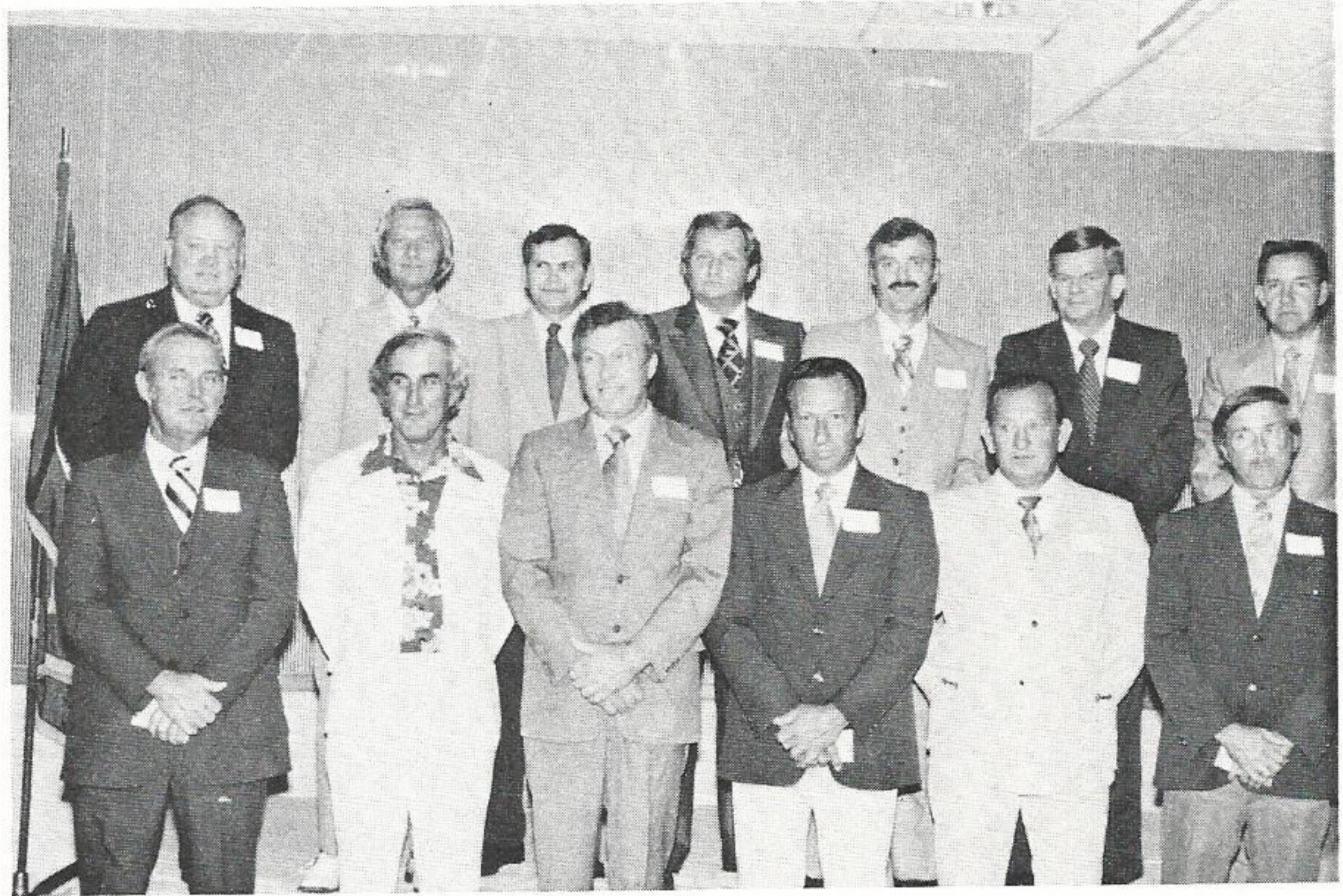
10 Years



10 YEARS—(left to right) Lloyd L. Williams, Richard J. West, Myra L. Ponthier, Stephen L. Morgan, James T. Veatch. Second row (left to right) Norman R. Lee, Thomas P. Young, Robert L. Pace, Clarence J. Washington, Michael D. Waller.

Baton Rouge Service Awards

20 Years



20 YEARS—(left to right) John H. Gottschalck, W. C. Fortinberry, Charles L. Dake, John H. Broussard, Joseph C. Bordelon, William B. Gully. Second row (left to right) Norman R. Lee, John E. Hobbs, Mitchell Hollier, George L. Irvin, Hugh A. Hall, William E. Barksdale, Aubrey P. Lee.

20 Years



20 YEARS—(left to right) Charles W. Smith, Morris J. Rabalais, Jude L. Rabalais, Vincent J. Misuraca, Nancy H. Melancon, Earl J. Miles. Second row (left to right) James D. Watkins, Jerry D. Walker, David H. Thornhill, John O. Stewart, Donald C. Sullivan, Robert R. Stephenson, Norman R. Lee.

Baton Rouge Service Awards

30 Years



30 YEARS—(left to right) Clyde V. Wilson, Marion D. Austin, Marvin L. Day, Sammie L. Eisworth, James A. Graves, Vernon A. Huey. Second row (left to right) Edward J. Sanchez, Millard K. Smith, James L. Reeves, William O. Lepine, Alfred P. LeBlanc, Leroy Tunious, Norman R. Lee.

40 Years



40 YEARS—(left to right) Norman R. Lee, T. O. McKnight, Mrs. McKnight, Mrs. McKenzie, Samuel A. McKenzie.

Beaumont Service Awards

10 Years



10 YEARS—(left to right) June McGuire, Tommy Norris, John Newton, James Oberg, Dru Plunkett, Harold Rodgers, Mr. Crawford, Darlene Randall, Philip Roy, Robert Smith, Jerry Terry, Carolyn Thaggard, Luish Winn.

10 Years



10 YEARS—(left to right) Charlotte Anderson, Jerald Adams, Thomas Ardoin, Raphael Bourque, Edythe Matthews, Wilson Broussard, Brandon Bryan, Mr. Crawford, Gene Different, Juanita Girdler, Frank Groves, DeWitt Hollingsworth, Kenneth Knowles.

Beaumont Service Awards

20 Years



20 YEARS—(left to right) Thomas Adams, Cornelius Arline, Joe Bondurant, James Bryant, Mr. Crawford, Pete Carney, Raleigh Cunningham, Jamie Davis, Pat Fukes, Danita Harper, JoAnn Hodges.

20 Years



20 YEARS—(left to right) Cornelius Lewis, James Mahlmann, Gulah Marshall, Doug Olson, Mr. Crawford, James Morgan, Walter Sikes, Charles Pantallion, Peggie Stout, Wayne Sullins and Prentice Ward.

Beaumont Service Awards

30 Years



30 YEARS—(left to right) W. L. Armstrong, Paul Boudreaux, Zack Brown, L. P. Cammack, Burton Doiron, Paul Harrington, Mr. Crawford, Rose Ann Johnson, Clifford Kuritz, Eugene LaFloor, Emile Matherne, Charles McManus, Ray Pace, Bill Simpson, Robert Wiggins and Dudley Wilford.

40 Years



40 YEARS—(left to right) Mr. and Mrs. J. W. Atkins, Mr. and Mrs. Ralph Ellis, Mr. Crawford, John Prescott and daughter, Mr. and Mrs. Bill Hurt, Mr. and Mrs. J. V. Lasyon.

Lake Charles Service Awards

10 Years



10 YEARS—(left to right) Curtis A. Brown, Roy J. Dowden, Conrad J. Fuselier, Lenard J. Meche, Joseph L. Stelly, Lawrence Stevens, Edward G. Welch, Mr. Lee.

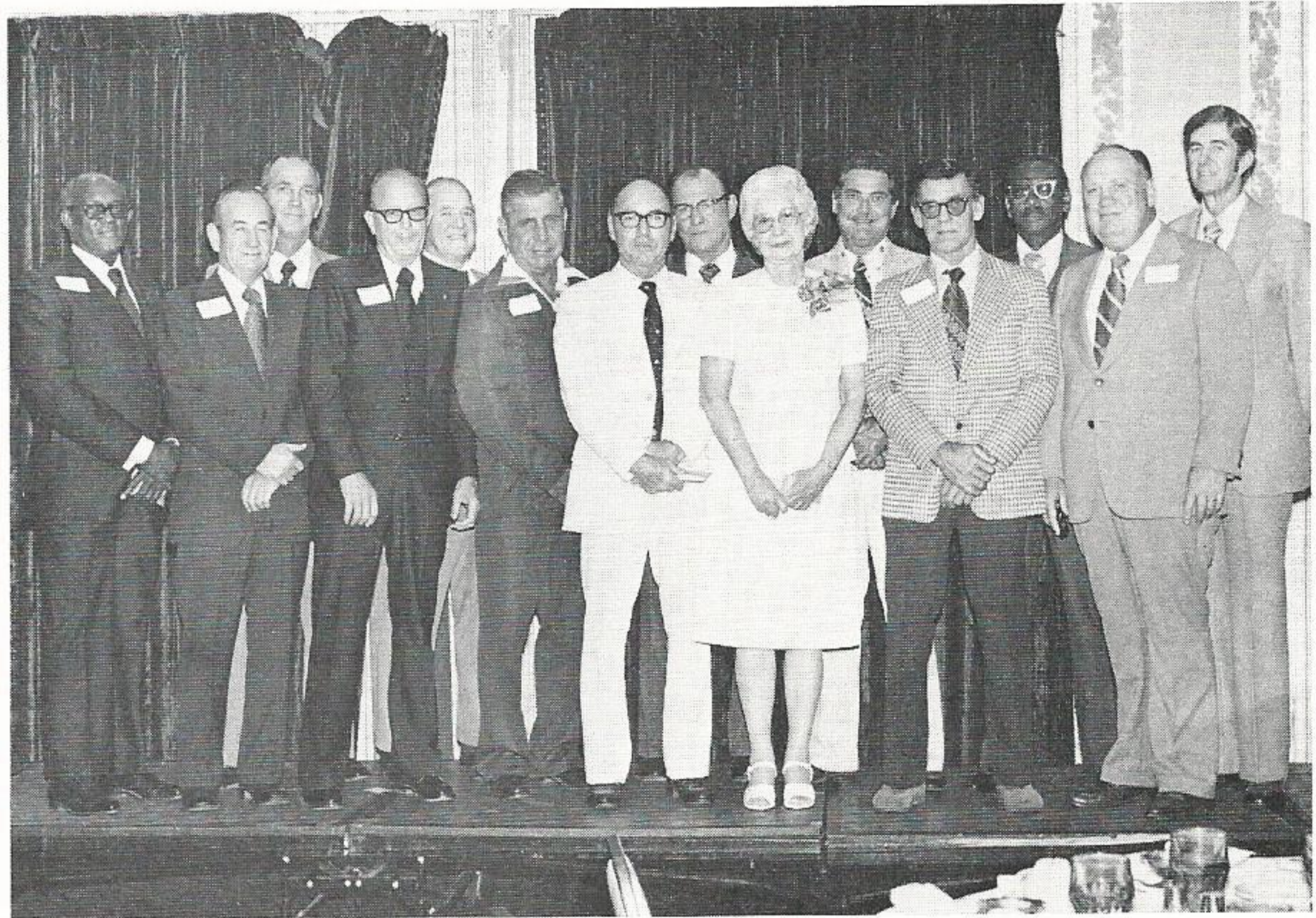
20 Years



20 YEARS—(left to right) Wilson J. Meaux, Joseph E. Miller, Richard Clark, Louis D. Clarke, Paul T. LaPoint, David Domingue, William A. Dotson, James A. Fugitt, Elcie J. Guillory, Mr. Lee, Charles J. Reifsnider, Alfred Henry, Robert L. Stewart, and Thomas L. Broussard.

Lake Charles Service Awards

30 Years



30 YEARS—(left to right) Julius B. Smith, Johnnie A. Babin, Jack P. Trouard, Charles G. Callahan, James T. VanWinkle, Eunice E. Byrd, Dougle J. Provost, Robert W. Derby, Lucina B. Ory, Robert L. Parks, Jimmie P. Forrest, Louis Gradnigo, Mr. Lee and L. J. Frederick.

40 Years



40 YEARS—(left to right) Melvin Garman, Benny Garman, John Lamm, Sylvia Lamm, Sue Franques, Roy Franques, Mr. Lee.

Port Arthur Service Awards

10 Years



10 YEARS—(left to right) Mr. Lee, Vic LaRocca, Mike Petry, Ron McKenzie, Gerald Bailey, Sherman Boutte.

20 Years



20 YEARS—(left to right) Mr. Lee, Calude Douget, James Faggard, Don Rice, Jesse Bellair, Ed Hutchins.

Port Arthur Service Awards

30 Years



30 YEARS—(left to right) Mr. Lee, Dan Dumas, Dalton Woodard.

Western Division Service Awards

10 Years



10 YEARS—(left to right) Jerry Landua, Pete Licce, Larry Boyett, Ray Brill, Ronald Hale, Floyd Podraza, David Harvey, Mr. Lee.

20 Years



20 YEARS—(left to right) Daniel Gibson, H. S. Herford, Don Ware, Robert Junot, Harlan Stabler, Lee Scrivener, Mr. Lee, John Sebastian.

Western Division Service Awards

**30
Years**

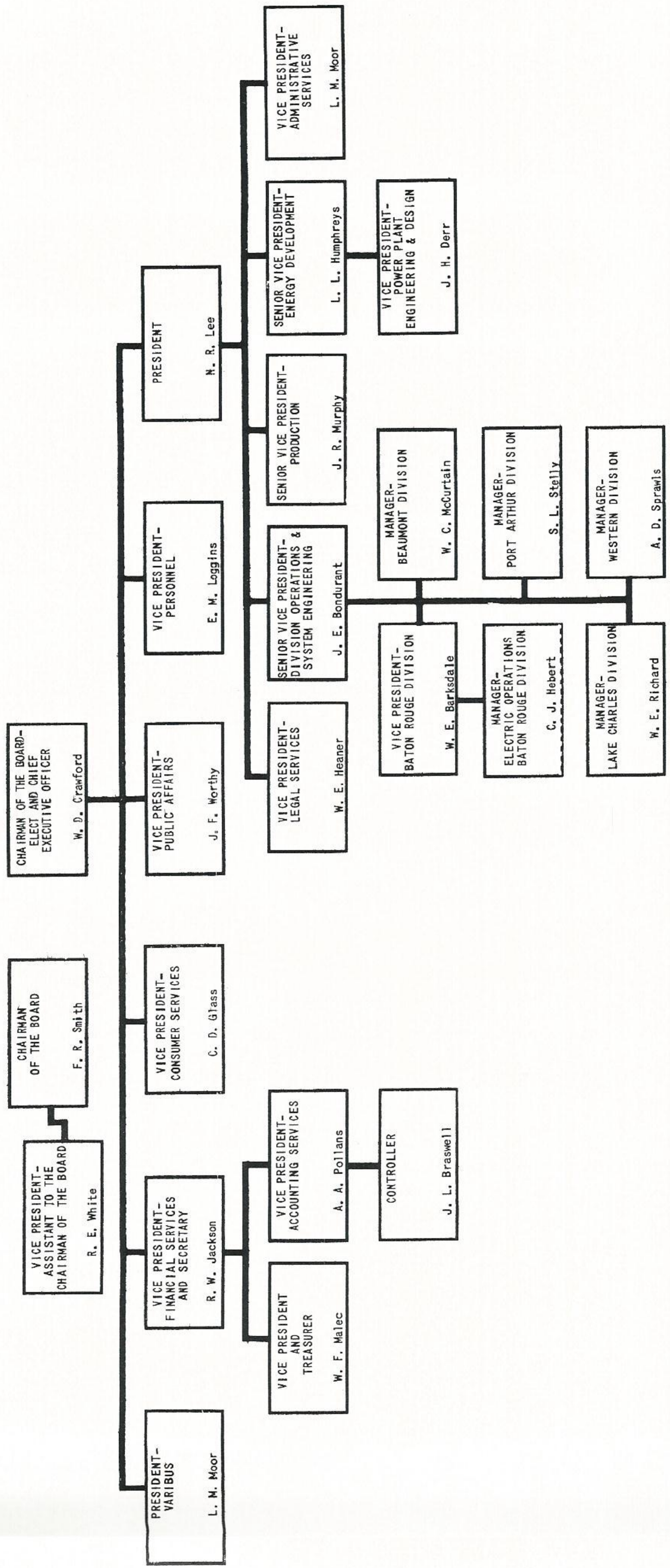


30 YEARS—(left to right) Robert Boenker, Barkley Lilley, Mr. Lee.

**40
Years**



40 YEARS—(Left to right) James K. Inglehart, Pauline Inglehart, Mr. Lee.



Bulk Rate
U. S. POSTAGE PAID
Beaumont, Texas
Permit No. 11



MICROWAVE DISHES

NIBBLE MIX

6 Tbsps. butter or margarine
1 tsp. seasoned salt

4 tsps. Worcestershire sauce
6 cups mixed cereal
1½ cups mixed nuts

Melt butter in large glass mixing bowl on HIGH 1 minute. Stir in seasoned salt and Worcestershire sauce. Add cereal and nuts. Stir until all pieces are coated. Sprinkle into 12 x 7 baking dish. Cook on HIGH 6 minutes, stirring every 2 minutes. Spread on absorbent paper to cool. Makes 7½ cups.

CRAWFISH ETOUFFE'

1 cup butter or margarine
2 medium onions, chopped
½ cup crawfish fat
2 Tbsps. green onions, chopped

2 tsps. parsley, chopped
2 lbs. crawfish tails
1 tsp. salt
½ tsp. red pepper

Melt butter in 3 quart casserole on HIGH 1 minute. Add onions and cook on HIGH 6 minutes or until tender. Stir in crawfish fat; cook on HIGH 3 minutes. Add green onions, parsley and crawfish tails. Cook on MEDIUM 20 minutes, stirring every 5 minutes. Add salt and pepper. Serve on steamed rice. Serves 4.

STUFFED EGGPLANT

1 medium eggplant
½ lb. ground beef
1 medium onion, chopped
1 cup chopped green pepper

1 cup chopped celery
1 cup cooked rice
½ cup chopped green onion tops
1½ tsps. seasoned salt

Cut eggplant in half lengthwise. Cover each half with plastic wrap and cook on HIGH 3 minutes. Set aside to cool. Brown ground beef on HIGH 3 minutes in 3 quart casserole. Drain grease. Add onion, green pepper and celery. Saute' on HIGH 6 to 8 minutes or until tender. Scoop out eggplant to within ½ inch of skin. Cut pulp in ¾ inch cubes. Add eggplant, rice, green onion tops and salt to ground beef mixture. Mix well. Cook on HIGH 5 minutes. Fill eggplant shell with mixture. Place in 9 inch square dish and cook on HIGH 3 minutes. Serves 4.

AFTER FIVE DAYS RETURN TO

PLAIN TALKS

P. O. BOX 2951
BEAUMONT, TEXAS

RETURN POSTAGE GUARANTEED

CONSUMER SERVICES DEPARTMENT

GULF STATES UTILITIES COMPANY

