

# PLAIN TALKS



MARCH, 1978



## A Thoughtful Editorial Tells It Like It Is.

# PSC squeezes utilities

*Sunday, February 19, 1978 The Sunday Iberian, New Iberia, La.*

Every time the Louisiana Public Service Commission slaps down requests for rate increases filed by utility companies, we are probably inclined to applaud.

Maybe we should ask for an explanation from the PSC.

While the commissioners may be temporarily easing the strain on our inflation-weary pocketbooks, they may be imperiling our future supply of electrical power.

You would expect spokesmen for the utility companies to protest rate turn-downs, because of their vested interest in the industry. Their cries may sound suspiciously like "Wolf!" rather than a voice of righteousness in the wilderness.

But what do you make of statements from private investment counselors and a state agency designed to promote free enterprise to the fullest which sound like echoes of those of the utility companies?

Dean Witter & Co. Inc. warns prospective investors that the actions of the PSC "should discourage any new investment in utilities operating in the state," and "Louisiana utilities are at a disadvantage compared with most other jurisdictions."

Loeb Rhoades & Co. Inc. states in its newsletter, "All things considered, the Louisiana regulatory climate may be the worst in the country today as far as the utilities and investors are concerned."

The Louisiana Association of Business and Industry (LABI) fears the state will experience a shortage of electrical power in the 1980s. The LABI Report states, "In an over-zealous effort to protect consumers from higher utility costs over the past few years, they (the PSC) have consistently refused to allow the electric utilities to make an adequate return on their invested capital — a return which would allow utilities to sell bonds at acceptable rates so that they could build new generating units or com-

plete the units now under construction."

On a six-category scale ranging from "well above average" to "well below average," Louisiana is one of five states in the lowest of Bache Halsey Stuart Shields Inc.'s ratings of regulatory commissions.

"Regulations can make or break a utility company," says Robert G. Hildreth Jr., in a Wall Street Journal assessment of the problems utilities are facing in finding investors to back their industry.

That's it in a nutshell. The utilities are unable to attract capital with which to finance their business, because rates are not keeping pace with costs and they are not able to deliver an adequate return on invested capital. The people with money to invest are able to get better returns in other areas, and that's where they invest it. That's also the reason that they are the people with money.

CLECO, the utility most of us are most familiar with, is one of the companies which has been rebuffed (twice) by the PSC, which, since July 1976, has denied seven major utility rate increase requests.

From its founding in 1935 to 1972, CLECO did not increase its rates. In fact, says Mike Prudhomme of the CLECO information office in Pineville, rates declined because of more customers and more efficient production and delivery methods.

The decade of the '70s has been one of galloping inflation, as you well know. Costs have escalated, loan-interest rates have soared. The financial problems have been compounded by the energy shortage, not only in the decline of oil and its higher cost but in mandatory conversion-to-coal projects.

Just how serious the fuel factor has become is indicated by the fact that many utility company customers today are paying as much in "fuel adjust-

ment" charges as they are for regular service. The utility companies have not been permitted to raise the rates they charge for electricity, but they have been given permission to pass on the higher cost of fuel to their customers.

What all this adds up to — or down to — is less profit for the utilities.

In the long run, if the companies are unable to make a profit, they will either have to shut down or curtail service.

Future plant expansion will be out of the question.

Without the support of investors, who provide 50 percent or more of the funds, companies will be unable to build the new facilities we are going to need — that, in fact, we could use today.

The thought of facing higher utility bills is distasteful. The thought of sitting in darkened rooms is more distasteful, but realistic if brownouts and blackouts are the inevitable result of the short sightedness or pennywise, pound-foolish policies of our PSC.

Or is it politics that lies at the bottom of the matter? The PSC has served as a springboard for governors in the past; the present commissioner makes no bones of the fact that he is a candidate for governor in the next election.

If politics is involved, it should be put behind the commissioners. Louisiana is working hard to attract new business and industry to the state. It cannot attract anything if it is unable to provide the lifeblood of modern business and industry — an adequate supply of electrical power.

Reasonable rate increase requests deserve to be given reasonable hearings, not out-of-hand dismissals designed to impress voters more than to protect consumers.

**Jim Wynn**  
News Editor  
Sunday Iberian

---

# PLAIN TALKS

Volume 56 — Number 3 March, 1978

Pat McMeel, ABC  
Editor

Rick Harvin, Contributing Editor

Ken Haynie, Artist

Published Monthly By Public Relations Dept. - James S. Turner, Director

---

PSC squeezes utilities

Page 2

DATELINE: Church Point

Page 3

Roots Reveal Surprising Past

Page 8

GSU NEWS

New Chief Executive  
Employee's Life Saved  
Executive Changes  
Management Meetings  
Former Chairman Dies  
President Honors Employees  
. . .and much more

Page 17

SERVICE AWARDS

Page 18

PEOPLE ON THE MOVE

Page 23

RETIREMENTS

Page 24

COFFEE CUP

Page 28

ANNUITANTS DIRECTORY

---

## ABOUT THE COVER:

Maintenance of major power plant equipment to hand tools was emphasized by top management at a recent series of system wide sessions for management personnel. This photo was taken at Neches Station during removal of the outer cover of the low pressure turbine blades of unit #8. From left to right are Wallace Chargois, repairman second class, Hilton Jones, repairman first class and James England, foreman. See story on page 11. (photo by Ed Foster)

---

GULF STATES UTILITIES CO.

P. O. Box 2951

Beaumont, Texas 77704

Member:  
 **Houston**

# DATELINE: CHURCH POINT

**In the land of the Cajuns, Church Point is our smallest, but most cordial, office**

Business at the Gulf States office in Church Point is more than just walking in off the street to pay the bill. It's a time to visit a little, maybe to have a cup of that "special" coffee brewed in the Cajun country and nowhere else. Chances are the conversation will turn to the "big game" this past season in Sunset when the local high school narrowly missed the playoffs while watching from the stands as two arch-rivals knocked heads.

"People could mail in their payments," said Loretta Savoy, office clerk at the company's smallest office in Louisiana, "but they enjoy visiting with us, and us with them."

Church Point is a famous place in the Cajun country of south Louisiana. Those who follow the traditional revelry of the Mardi Gras season know that, on the last Sunday before "Fat Tuesday," an event takes place unique among celebrations in the nation, and a last bastion of male supremacy . . . the Courrir de Mardi Gras. On this day, men and boys from Mamou and Church Point gather in vivid cos-

tumes on horseback and in wagons, braced with plenty of liquid refreshment to ward off the chill, and set forth on an all day junket through the countryside gathering nice fat chickens from area farms. The chickens later wind up in huge gumbo pots, but it is the gathering of the chickens that is the most fun. Sorry, ladies, you can follow the men folk in cars, but you must watch, that's all.

This is Church Point at its colorful best. The rest of the year it is business as usual in the local office. In addition to Loretta, there is Harold Beaugh, consumer service representative and also "His Honor the Mayor" of Church Point, and Leroy Boutin, district serviceman. They are a close knit group and represent 72 years of service with Gulf States.

"Business here is very much different, positively speaking, than it is in a big city environment like Baton Rouge, Lake Charles or Beaumont," says Loretta. "It's a much more personal meeting here. I mean these are my people. I was born and raised here. They are more to me

than account numbers."

Such is the attitude of Beaugh and Boutin also. "We are just a little different from everyone else." Beaugh said. "I say that because it's true. We know their problems, how they think and how they live. We speak French with them in conducting business and that's important. Being bilingual here is a necessity. Some of our customers don't know English, and some speak a combination of both. It's a unique situation."

The third member of the Church Point crew, Boutin, has lived in this city the past 12 years and has come to call it home. "I know just about everybody and they know me. I like that. My relationship with them is one of personal involvement as well as business."

Boutin admits that sometimes being the district serviceman has its drawbacks. He answers to five dispatchers, and that can be almost a little too much at times. Leroy, his wife Lula Mae Barros, and their children Priscilla, Leroy, Jr., and Bonnie are used to the pace. "I don't stand still

very long, but I don't mind. They are my people now."

Loretta's family consists of husband, Edwin, and their two children, Melanie and Douglas. "We're all Church Pointers and that's the way it will always be."

Beaugh's territory is a big one. As consumer service representative he travels as far east as Port Barre, west to Mermentau, and north from Lawtell south to Henderson. "It's a big area, but I don't really mind."

Being mayor of Church Point helps him in his work. "It's not a full time job. We have good city government with permanent employees and I mainly act as chairman, a coordinator if you will. I enjoy working for the betterment of our community and I like the personal involvement it takes as mayor, and certainly as consumer service representative."

Beaugh and his wife, Juanita, have three children. They are John, Jr., Vicki and Suzanne. Beaugh also became a grandfather for the first time recently when Vicki gave birth to a girl, Alissa.

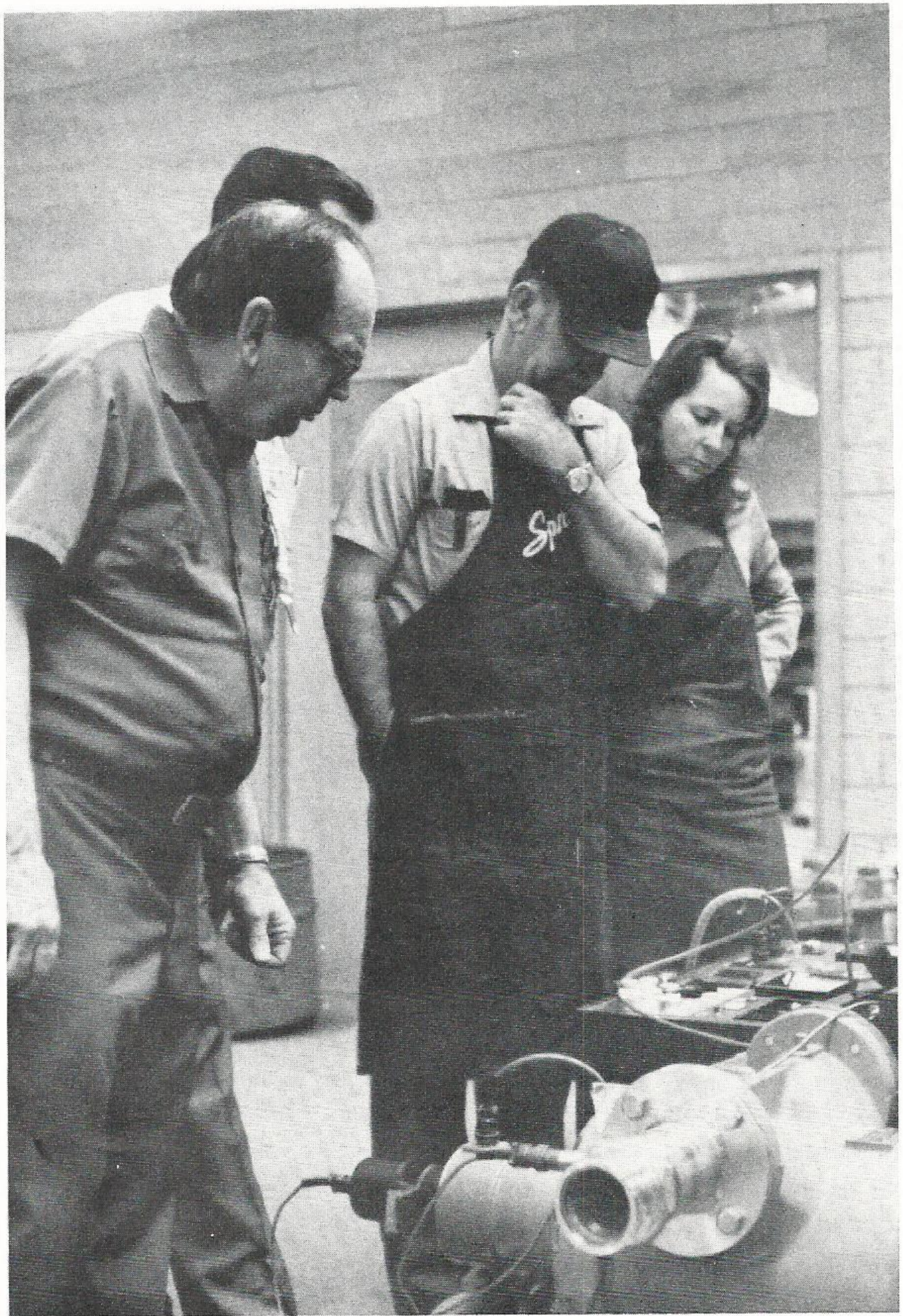
You may be able to tell by now that personal involvement, in the job and in the people, are prime concerns for the Church Point GSUers. As Loretta said in the concluding moments of the interview, "Computers are wonderful machines, but there is nothing like personal contact. At Church Point our customers are real, first name basis people, and to them we are real too. It makes a difference you know."

Yes, There, it does.

The Church Point gang consists of Harold Beaugh, Loretta Savoy and Leroy Boutin. Though Church Point is the smallest office we have in Louisiana, it is one of the most versatile in that business is conducted in as much French as English, and often a mixture of both.



As times change so must equipment and the knowledge of gas operations personnel. Dennis Bourg, left, meterman first class, looks over new equipment to prove meter integrity. Also looking on are Melanie Hima, meterman second class and Albert Weimer, meterman first class. The man behind Bourg is a representative of the manufacturer.



## We Began As The "Gas" Company

# “ROOTS” REVEAL SURPRISING PAST

**Today's Gas Operation in Baton Rouge is a far cry from the day when the moon dictated how much fuel to use.**

Years before Abraham Lincoln ever gave his now famous Gettysburg Address, there was this little gas light company way down south in Dixie, Baton Rouge to be exact, doing its best to see that the state's capital city street lights were all brightly burning. That is unless there was a full moon in which case the lights were left unlighted. "No use in burning gas when you could see by the light of the moon," gas officials explained.

This may well be the first recorded use of conservation of (coal) gas in this country. It is certainly the first effort on the part of our company and its predecessors to obtain maximum use of its fuel.

It was known as the Baton Rouge Gas Light Company at that time back in 1859. It still serves Baton Rouge, and a portion of East Baton Rouge Parish today. It's the gas operations part of GSU, and though we don't worry about lighting the

street lights with gas anymore, or manufacturing that gas from coal, we are responsible for serving some 75,000 residential customers, some 5,000 commercial customers, and approximately 50 industrial customers, with natural gas for heating, cooking, air conditioning and whatever else it is needed for.

"You'd be surprised just how many of our own employees in the system don't know that GSU is the "Gas Company" for Baton Rouge, said Floyd Marston, operating superintendent-gas. "You don't hear much about us, but we service over a thousand miles of pipe beneath the city and the parish, ranging in sizes from two inches to 18 inches. We're just not as visible as electric transmission and distribution because you don't see any lines above the ground."

The Gas Department, and its 92 employees operates, basically, as a separate utility company in its own right. They have their

own service department, trucks and maintenance. Gas Operations is structured within the framework of the Baton Rouge Division, headed by Jack Worthy, vice president.

Settling down in his chair, Marston talked about the gas business, and the effect the energy crunch is having.

"We, like every other gas company I can think of, are having our problems getting the gas we need to supply our customers. Our supplier is Mid-Louis-

iana Gas Company, and they not only serve us but others as well. A couple of days in January they just couldn't supply all the gas that was necessary for all its customers. As a result, we came very close to curtailing our industrial customers so that we could supply our residential demands."

Marston explained that the system peak demand once hit 105 million cubic feet per day in January of this year, and that was over five million cubic feet short of Mid-Louisiana's delivery capability. "There just wasn't anyplace to get additional supplies."

Since 1928, gas operations have been supplied out of the old Monroe Field in northeast Louisiana. That field has been pro-

ducing since the 1920's and is now drying up. Marston also explained that the University Field near Louisiana State University is nearly depleted with only one producing well.

"We need more gas, that's all there is to it. We've been lucky so far in that we have not had to curtail any use this year. We did last year. The ironic part about all this is that we are sitting virtually on top of one of the largest new gas finds ever near New Roads. But we're in a bind just

like other gas companies."

Is there a chance that we, as the gas company, might have to restrict gas deliveries to new subdivisions going up in Baton Rouge, Marston was asked?

"Yes. Unless we find new supplies there is a very good chance that we would have to turn down new residential customers in order to continue to serve the ones we have."

"We are trying every day to find supplies at a reasonable cost. This old Baton Rouge Gas Light Company has been in business a long time. It's up to us to keep it going."

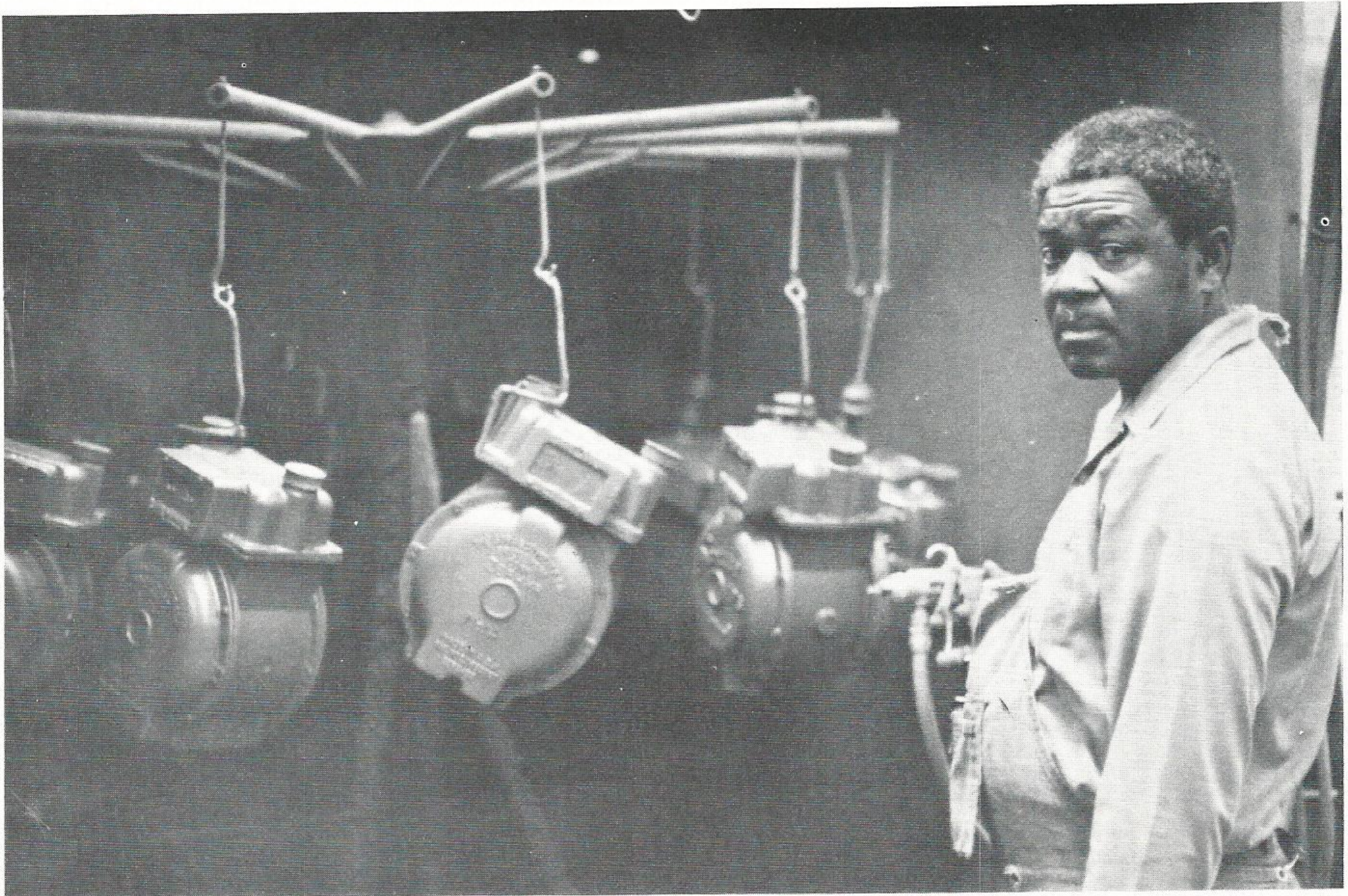
---

**"We, like every other gas company I can think of, are having our problems getting the gas we need. Full moon or not, we have to have the gas."**

**Floyd Marston  
Superintendent**







**Silas Smith, helper in the Gas Department, prepares to spray paint meters that will soon be placed in the field. At bottom, James M. Curtis, Robert Borne and Elvie A. Cowart handle much of the engineering that is needed to insure reliable service. Not pictured is Geralyn Williams, the fourth member of the office.**



## Crawford Becomes Chief Exec



Floyd R. Smith, left, Chairman of the Board of Directors, welcomes W. Donham Crawford, incoming Chairman-Elect and Chief Executive Officer. Crawford, whose appointment to Chief Executive Officer became effective March 1, will succeed Smith as Chairman upon his retirement in July.

### CPR Pays Off

## Employee's Life Is Saved

Mike Valentine, a substation mechanic in Baton Rouge, owes his life to six fellow employees who were on hand, and knew what to do, when Valentine was knocked unconscious following contact with a 13,800 volt transfer bus at the Vulcan Substation in August of last year.

Valentine was not breathing when his co-workers reached him. A quick and correct application of Cardio Pulmonary Resuscitation (CPR) by the men

company gives, and marked the seventh such award given to Baton Rouge personnel for 1977. Marvin James, Gonzales, was the other recipient.

"Many years ago we established the President's Life Saving Award as the highest award to be given by the company for heroic deeds by employees in saving the life of another human being. I am here today to present this award to these men who were directly involved in saving Mike's life," Lee said.

See related story and pictures on page 12

revived Valentine enough to breathe on his own until medical help could arrive.

As a result of their actions, Walter Freeman, Joe Garret, Bobby Sheets, Butch Turnley, Wayne Varnado and Carroll Wilson were honored by Norman Lee, president of the company, and presented the President's Life Saving Award. This is the highest award the

Lee continued, "Words cannot express the esteem in which I hold these men. They certainly have demonstrated that they are men of the highest quality, and we are proud to have them as members of the Gulf States team."

CPR classes are conducted on a regular basis by the Safety Department throughout the system.

W. Donham Crawford, president of the Edison Electric Institute, the national association of the nation's investor-owned electric utility industry, was appointed Chairman-Elect and Chief Executive Officer of Gulf States, in action highlighting a Board of Directors meeting held in Baton Rouge in February. The appointment was effective March 1.

Crawford was elected a director of the company in October, 1977, and at that time it was announced that he was expected to succeed Floyd R. Smith as chairman upon Smith's retirement on July of this year.

The board authorized construction expenditures of \$250 million for 1978, and declared dividends of 31 cents per share of common stock and regular dividends on all issues of preferred stock. Dividends are payable March 15, to shareholders of record on Feb. 22, 1978. This marks the 122nd consecutive common dividend payment.

Crawford entered the electric power industry in 1955 when he became affiliated with Middle South Utilities, Inc., as a nuclear power specialist. He later served as assistant secretary and assistant treasurer, and vice president of Middle South. In 1963 Crawford joined Consolidated Edison Company of New York City as vice president, Special Assignments. He became administrative vice president in 1966. He served in that capacity until 1969 when he left to join EEI as managing director.

A native of Little Rock, Crawford attended the University of Arkansas and graduated from the United States Naval Academy in 1947. He holds a master's degree from the California Institute of Technology.

After service with the Navy, Crawford joined the U.S. Atomic Energy Commission's Savannah River Operations office in Aiken, S.C. where he served in a number of technical and administrative positions. His experience  
(continued on next page)

# Joe Bondurant, Ed Loggins, Bill Cropper Receive New Assignments in Reorganization Moves

A change of responsibilities for two vice presidents and the naming of an assistant treasurer highlighted personnel changes during February.

Joseph E. Bondurant, former vice president-Division Operations, was promoted to senior vice president and placed in charge of Division Operations and System Engineering. Edward M. Loggins, former vice president of Technical Services, was named vice president-Personnel. William A. Cropper, supervisor of Long Term Finance, was promoted to assistant treasurer.

Bondurant began his career at GSU in 1957 as an engineer in the Beaumont Division's Transmission & Distribution Department. After a transfer to the special projects section of System Engineering he advanced to supervisor of scheduling. He was then promoted to division engineer in Beaumont. In 1967 he was promoted to operating supervisor

in Lake Charles, operating superintendent in 1969 and division manager in 1971.

The Fulton, Ky., native is a graduate of Georgia Tech in electrical engineering, and has completed public utilities management studies at the University of Michigan. He is married to the former Sarah Garner of Atlanta, Ga., and the couple has two daughters, Alyson and Tammy.

Loggins, a native of Winona, Miss., has been with the company since 1958 when employed in Navasota as an engineer. He was transferred to Baton Rouge in 1960 as electrical engineer at Louisiana Station, and later was transferred to Willow Glen Station. In 1964 he was promoted to industrial sales engineer in Baton Rouge and a short time later headed the Division's industrial and commercial sales efforts.

In 1971 Loggins was promoted to superintendent of Sabine Station. This assignment was followed by his promotion to Production Manager, and in late 1975 to manager of the Western Division.

Loggins is married to the former Patricia Smith of Hattiesburg, Miss.,

and the couple has four children, Cindy, Martha, Russell and Sharon.

He is a 1958 graduate of the University of Texas with a bachelor's degree in electrical engineering, and a four year veteran of the Air Force. Loggins is an active civic worker and was recently elected a board member of the North Jefferson County Unit of the American Cancer Society.

Cropper came to GSU in 1969 as assistant purchasing agent in Beaumont. He was promoted to market research analyst in December of 1969, and financial analyst in 1973. He became senior financial analyst in 1976 and then supervisor of Long Term Finance in 1977.

A native of Beaumont, Cropper is married to the former Genon Oliver of Corpus Christi, and the couple has two children, William, Jr., and Jenna. He is a 1961 graduate of Texas A&M University and holds a master's degree in business from Lamar University.

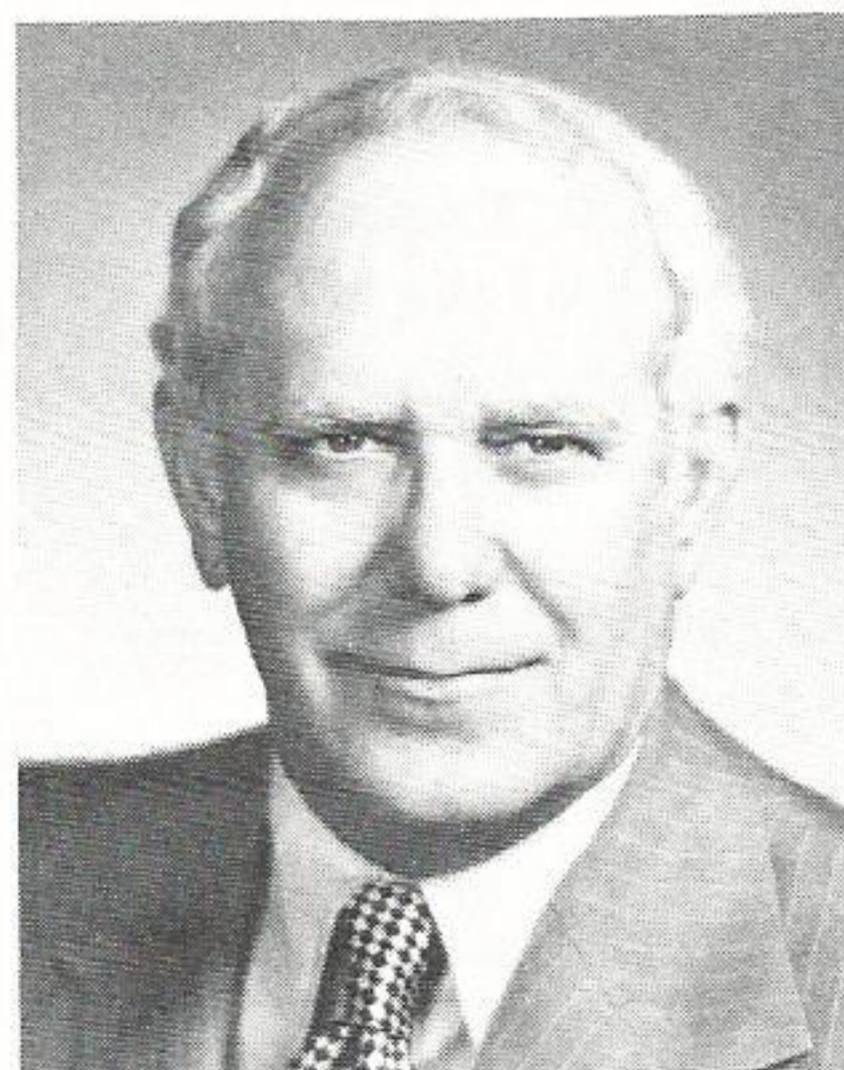
He is an active member of the Texas A&M Former Students Association and SAAM (St. Anne's Association of Men). He serves as a director and vice president of the Beaumont Council of Camp Fire Girls.

## ...Crawford

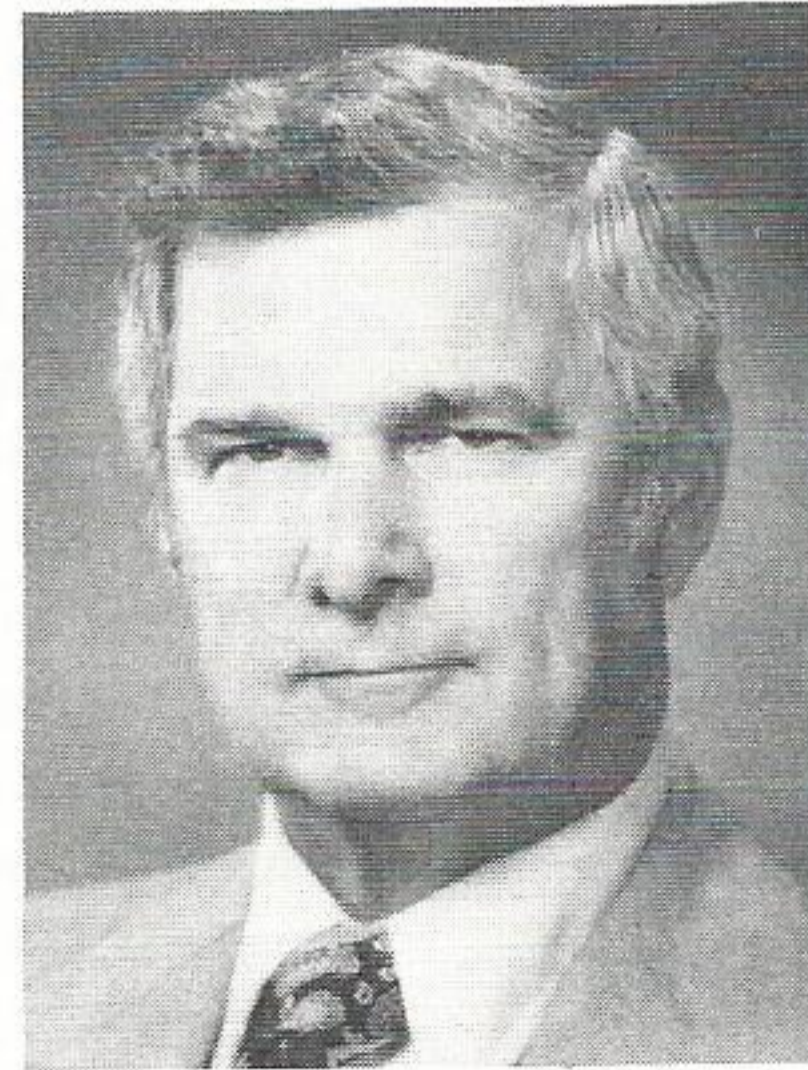
also includes five years on New York Mayor Lindsay's Advisory Council on Science and Technology, and in an advisory capacity to several federal agencies including a three year stint with the National Air Quality Advisory Board. He has served as chairman of the Electric Utilities Advisory Committee of the U.S. Federal Energy Administration and is a trustee of the Thomas Alva Edison Foundation.

He and his wife, Colene, a native of Edmond, Okla., have three children, Carol, Bruce and Philip.

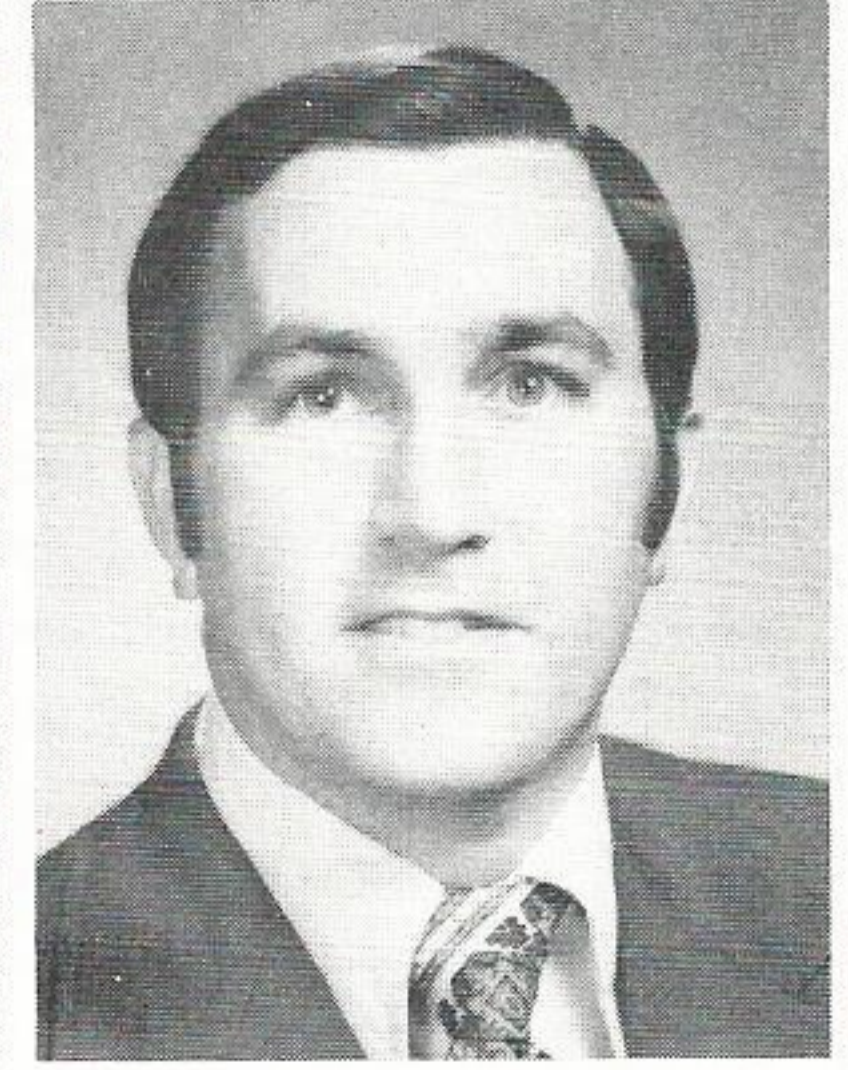
In announcing his decision to accept the GSU position, Crawford said, "I feel that future prospects for the company and for the area are unlimited. I am delighted to be joining such a fine organization, and it is with real pleasure that I look forward to joining the Gulf States team."



**Bondurant**



**Loggins**



**Cropper**

# Glenn Richard Dies



Glenn E. Richard

Glenn E. Richard, retired Chairman of the Board of Directors, died February 4, in Beaumont. He had been in retirement since 1966.

Richard, father of William Richard, Lake Charles Division Manager, had served Gulf States for 44 years, the last seven of which he served as president and then chairman of the company. He began his career as a clerk in the Jennings office, then moved into the accounting field where he held a number of positions in Lake Charles and Beaumont. He became treasurer in 1958.

He was an active civic worker and deeply involved in community affairs before and after retirement. He was appointed by President Richard Nixon to head a group of businessmen in the Orange-Jefferson County area in training, hiring and retaining the disadvantaged in private business. United Appeals work and Chamber of Commerce involvements were among his chief projects. In 1968 the East Texas Chamber of Commerce honored him as "Mr. East Texas," and described him as a man "who best exemplifies the spirit and qualities which give direction to the growth and progress of East Texas."

Richard, in addition to his son William, is survived by his wife, Mary Ellen Gill of Jennings, and Thomas Richard of Austin.

## Alvin Askew

# Governor's Advisory Asst. Joins GSU Energy Board

Alvin Askew, Governor Dolph Briscoe's advisory assistant for energy, has been named as a member of the Advisory Board of Gulf States Utilities Company's Texas Energy Information Centers, according to Ralph B. Spafford, GSU system marketing coordinator and chairman of the Advisory Board.

"We are indeed fortunate to have a man of Askew's qualifications and expertise join the panel of experts who have contributed so much to making the Gulf States' energy management programs effective," Spafford commented.

The Advisory Board, consisting of recognized authorities in fields including finance, home building, education and architecture, aids in the evaluation of products, materials and concepts for GSU's Energy Information Centers. Board members also develop ideas to maintain the effectiveness of the centers in an ongoing program.

Askew has experience in the field of energy, having served as executive director of the Governor's Energy Advisory Council prior to accepting his present position.

Since November, 1973, Askew has been administrator for the Texas Emergency Fuel Allocation Program. He represents Governor Briscoe on several national governor's committees on fuel and belongs to three White House task forces.

The United States Air Force Academy graduate is a member of the Southwest Regional Energy Council, the Southern Interstate Nuclear Board, the South Council of the State Legislator's Energy Committee and the Interstate Oil Compact Commission.

Askew, who is also a graduate of the University of Texas Law School, was an engineer for the Texas Railroad Commission, oil and gas division, and served as legal examiner for the Commission as well.

# Utility Foreman Has Big Night

Emmitt C. "Van" VanEman is a utility foreman at Beaumont T&D by occupation, and a bowler by choice on Thursday evenings in the Big Ten league in North Beaumont. He's a better than average bowler with a 171 average, and has many high games to his credit. He has never bowled the perfect game, the 300, but in late January he gave it a good shot.

Van started one particular game with an open frame. He could manage only nine pins in two balls. "Dad gum it," he muttered. It must have made him concentrate more because he concluded that game with 11 strikes in a row for a 279 game.

As the result of that Van qualified for the American Bowling Congress Century Club award for bowling 100 pins over his average; he qualified for the ABC's 11-In-A-Row Award, and he qualified for a beer. He finished the night with a nice 663 series (an average of 220 per game), took over first place for high game in the league with handicap (299), and raised his average to 174.

"I guess I'll always remember that first frame and wonder what would have happened if I had started out with a strike."

# Safety, Financial Issues Are Stressed By Management In Annual Meetings

Management personnel from throughout the system last month gathered in various locations to hear "State of the Company" presentations from top management. It also marked the final appearance of Floyd Smith before these sessions as principal executive officer.

Smith, who retires in July after 43 years of service, called on employees to continue their efforts in helping the company meet the demands of its customers, and to maintain the high reliability of service that has been a trademark of GSU since its founding.

Two major themes dominated the presentations, safety and the need for astute financial management from all departments and employees.

Larry Humphreys, senior vice president-Energy Development, announced work would resume on the \$360 million coal-fired generating unit at Nelson Station. Work had been halted on the project approximately two years ago for financial reasons, and because the system's load growth was not sufficient to warrant funding at that time.

In the interim, major components of Nelson #5 were sold to Houston Lighting & Power. Engineering for Nelson #6 has been reactivated by Bechtel Engineering and an in-service date of 1982 has been projected.

"As for River Bend," said Humphreys, "financial constraints remain a problem." Humphreys said the status of our company's first nuclear powered generating facility near St. Francisville is dependent on participatory agreements from others and favorable rate relief decisions from Louisiana and Texas regulatory bodies.

Joe Bondurant, senior vice president-Division Operations and System Engineering, said that each employee has the responsibility of helping the company successfully meet all its challenges. "We have the obvious need to provide the best possible service to our customers . . . we can't expect our customers to march on the Regulatory Commission and demand a rate increase for us, but it will help us if we can avoid complaints from our customers about our ability or willingness to serve them."

Bondurant went on to emphasize proper care and maintenance of equipment could help curb company expenses, at least help to keep them at a realistic level. He then switched to the area of safety and strongly directed all employees to be alert to hazards and potential hazards that could effect the public as well as the employee. "Law suits are being filed right and left alleging neglect that resulted in damage or injury to the public," Bondurant stated, "I urge you to report anything you find that could be dangerous, anything that could cause personal injury or property damage. By doing so we can avoid some of these costly damage suits."

Bondurant concluded his statement with reference to various supervisory development programs and employee information programs such as CONTACT. "It is our intention to continue with these programs."

Tom Page, executive vice president, described the financial status of the company and what was needed to maintain the "AA" bond rating. Maintaining financial stability in the electric utility industry in this day and time "brings out the best in the best of people," he said.

Page reviewed the rate case status in Louisiana and Texas. At present the company has a rate request pending with the Public Service Commission in Louisiana that, if granted, would add \$43 million in annual revenues, approximately a 20 percent increase. In Texas the company has filed a petition before the Public Utilities Commission requesting a general increase in electric rates that would add \$24.3 million in annual revenues, approximately 13.5 percent. Various cities within the system in Texas have obtained the services of an independent consulting firm to analyze the request. The company will meet with the PUC on April 5, regarding the request, and it is expected the cities will follow whatever decision is rendered by the commission.

The importance of what Page said was further detailed in a presentation made by Bill Malec, treasurer of the company.

"Trying to maintain an "AA" rating when the amount of revenue you are receiving is inadequate and you can't get rate relief is no easy task," Malec said.

"Just as there is a limit as to what you personally can borrow, so is there a limit on the amount a company like GSU can borrow." He explained that since the Louisiana Public Service Commission turned down the company's rate request last year, the company had to reduce its construction expenditures drastically. Doing this has allowed the company to maintain its financial strength, but it also means that needed generation facilities may not be ready to provide electricity needed by our customers.

Malec finished by outlining various ways the company goes about obtaining needed financial backing from selling common stock, first mortgage bonds, preferred stock to setting up trusts for the purpose of financing fuel oil inventories.

Mike Durham, safety director for the company, reviewed 1977 accidents including two fatalities (one on the job and one off), and several near misses which could have resulted in fatalities.

"The real tragedy of all this," said Durham, "lies in the suffering and loss to those who have had disabling injuries or the survivors of those who have perished."

Durham then outlined a new safety policy which was implemented during the year, the chief elements of which are:

1. Strict accountability on the part of supervisors for violations of safety by employees under their direction.
2. Firm disciplinary action for violations of safe working practices.
3. Establishment of a Safety Review Board.
4. Mandatory safety audits by supervisors and safety representatives.
5. Survey of tools and equipment.
6. Firm top management commitment to back the program.

"If you give everything you can give to support safety, then success is ours. And success means life when we're dealing with safety. You are the key."



President Norman Lee, left, was on hand recently in Baton Rouge to honor seven employees who were directly involved in saving the life of two people last summer. The seven are, from left, Mike Valentine, Walter Freeman, Ellis Varnado, Bobby Sheets, Joe Garrett, Butch Turnley and Carol Wilson.

# Lee Honors Life Saving Efforts

Just another safety meeting? It didn't turn out that way for Marvin James, GSU serviceman in Gonzales, or for the man whose life was saved because James did take the meeting seriously.

In early August, James and other GSUers attended a Coronary Pulmonary Resuscitation (CPR) course which is given by company safety personnel on a regular basis throughout the year. Though James never seriously considered there would come a time when he might really have to use the information, the time did come. James remembered his instructions, and William Garrett, an employee of David Electric Construction Company, is alive today.

It was Aug. 29, in the early evening hours when Garrett came in contact with a high voltage power source at Giba-Geigy plant in St. Gabriel near Willow Glen Station. Garrett was working in the GSU substation within the plant, as was James. At the time of the accident, James was at his truck when he heard a "crackling noise" and saw Garrett fall some 20 feet to the ground.

While Garrett's assistant ran for help, James managed to pry open the man's mouth enough to begin breathing air into the victim's lungs. "I couldn't

see him moving at all." But shortly the man began to respond, or at least tried to. "I thought I'd lost him again," said James, "I got over him again, and again he responded."

The plant ambulance arrived and took Garrett away to the hospital.

It was later learned that the man was released, fully recovered. "I haven't heard from him but I know he's okay now because I did check with the hospital. Once I found out he would live I

forgot about the whole thing, I thought everybody had."

Recognition for James' efforts were put in the mill almost immediately. The Safety Department at GSU was not going to let the life savings efforts of James go unacknowledged, and in January, Norman Lee, president of Gulf States, honored him with a life saving award plaque, and congratulated James for a remarkable effort.

## Thrift Plan

Investments made by the Trustee during January, 1978 covering employee deductions and Company contributions through December, 1977 were as follows:

### Purchase of Common Stock

Number of Shares	Total Cost	Average Cost Per Share
23,854	\$325,010.78	\$13.625

The Trustee also made the following deposits: First Security National Bank of Beaumont, \$137,754.22.

# Nuclear Power Generation Saves North From Chaos

WASHINGTON—Neither snow nor rain nor cold nor strike have impeded United States nuclear power plants from generating desperately needed electricity this winter, according to a survey of the country's nuclear utilities.

Among the respondents to the Atomic Industrial Forum survey, a large majority report that their nuclear operations were working at better-than-average capacity this January despite crippling cold and blizzards. In many cases, a utility's supply of relatively cheap nuclear electricity allows it to sell some of the more expensive electricity from its fossil fuel plants to non-nuclear utilities whose capacities are being threatened by wet, frozen, or depleted coal supplies.

Commonwealth Edison, which operates seven nuclear units in Illinois, says that since the coal mine's strike began,

its reactors have provided electricity that that would have required 2.7-million tons of coal to generate. Duke Power Co.'s nuclear plants in the Carolinas saved over a million tons of coal from December 6 through February 5. The Tennessee Valley Authority had to derate its coal units in this period because of wet and frozen fuel, thereby relying even more on its nuclear, as well as hydro generation to keep customers supplied.

Spokesmen for most utilities agree that this winter's power cutbacks, reduced business activity and unemployment would have been more severe without the nuclear contribution.



**Bill Richard, Lake Charles Division Manager, and Calcasieu United Appeals Campaign Chairman, has a broad smile as a result of exceeding the campaign goal of \$636,000. He is standing in front of the display used at report meetings to show the progress of the campaign. The board was built by Leland Broussard, substation mechanic 1st class, and Bob Derby, Lake Charles general substation foreman. Its design was a creation of Steve Dever, Lake Charles United Appeals publicity director. Steve is the son-in-law of Berton Young, Lake Charles lineman 1st class.**

## Brumfield Is Certified

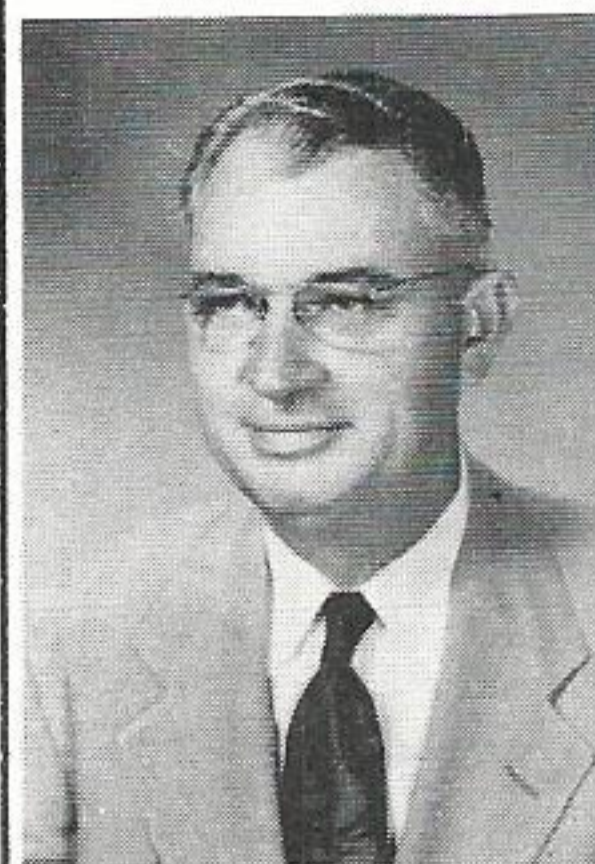
Fred Brumfield, security coordinator-Beaumont, has been certified as a Protection Professional by the Professional Certification Board of the American Society for Industrial Security.

The certification comes after the successful completion of rigid qualifications including on the job experience, education and written examinations. As a certified professional, Brumfield joins an exclusive organization which numbers only 700 throughout the nation.

Brumfield has been employed by Gulf States for 25 years and is presently in the Power Plant Construction Department. His duties include responsibility for the planning and implementation of loss prevention programs at the company's power plant construction sites.

He is a member of the Edison Electric Institute Security Committee and chairman of the Sabine-Neches Chapter of the American Society for Industrial Security.

## Deaths



**Peckham**



**Prejean**

**J. Roy Peckham, Sr.**, retired Lafayette District Superintendent, died in February, in Galveston. He had been retired since 1965.

Peckham, a native of Crowley, joined the company in 1929 as a clerk in the Billing Department in Beaumont. Much of his time over the years were spent in Beaumont and in Navasota (then headquarters of the Western Division) in various accounting positions and as a traveling cashier. In 1945 he was promoted to district superintendent in Alvin. Later, when our company switched the Alvin property with another utility, Peckham was transferred back to Beaumont as district superintendent in the old Gulf District. In 1953 he was named to the Lafayette position.

He is survived by his wife, Gertrude, and a son, J. Roy, Jr.

**William Prejean**, retired maintenance supervisor of the old Riverside Station in Lake Charles, died in January. He had retired in 1965 after more than 47 years of service with GSU and its predecessor company.

He joined what was to become Gulf States in 1918 as an oiler at the Lakeside Station in Port Arthur. He transferred to Neches Station in 1926 as turbine operator, and a year later became station engineer. When the company acquired Riverside Station in Lake Charles in 1947 Prejean was sent there as operating engineer.

He was a native of Mauriceville and is survived by a daughter, Mrs. Charles Burgess of King of Prussia, Pa.

## Jim Stelly Elected VP

Jim Stelly, Orange District Superintendent, has been elected first vice-president of the Greater Orange Area Economic Development Corporation.

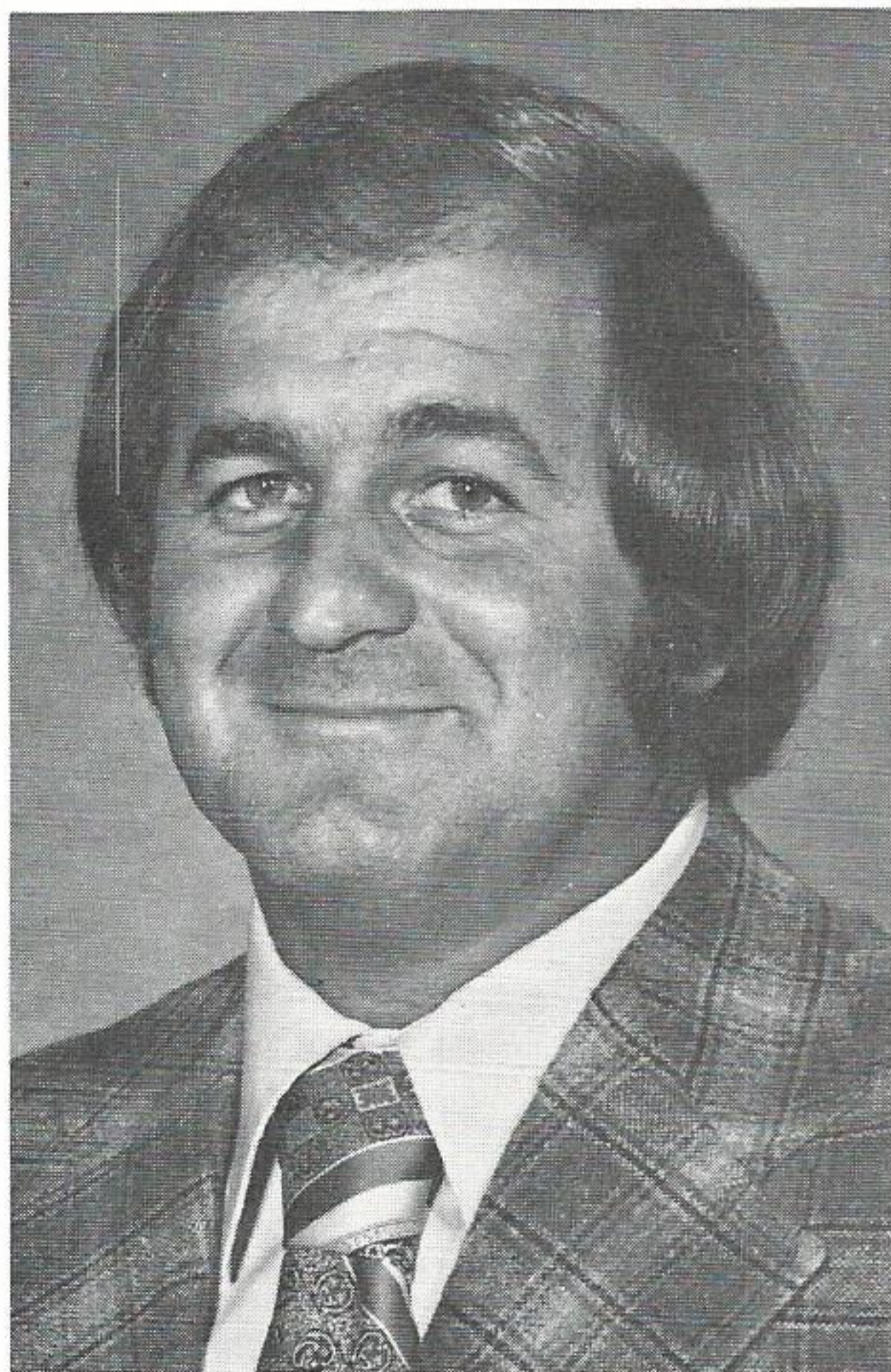
Stelly said one of the first things he was going to try to do is actively solicit a major department store to open a retail outlet in the Orange area. "I know of such a store whose owners are interested in locating here, and I will be after them to do so."



Marvin James, serviceman in Gonzales, is a humble but real life hero. Because of his quick and knowledgeable action in a crisis situation a man's life was saved. Norman Lee, right, president of GSU, headed up a number of officials on hand recently in Gonzales to honor James for that effort.

(See Story on Page 12)

## John Richard Is Alderman

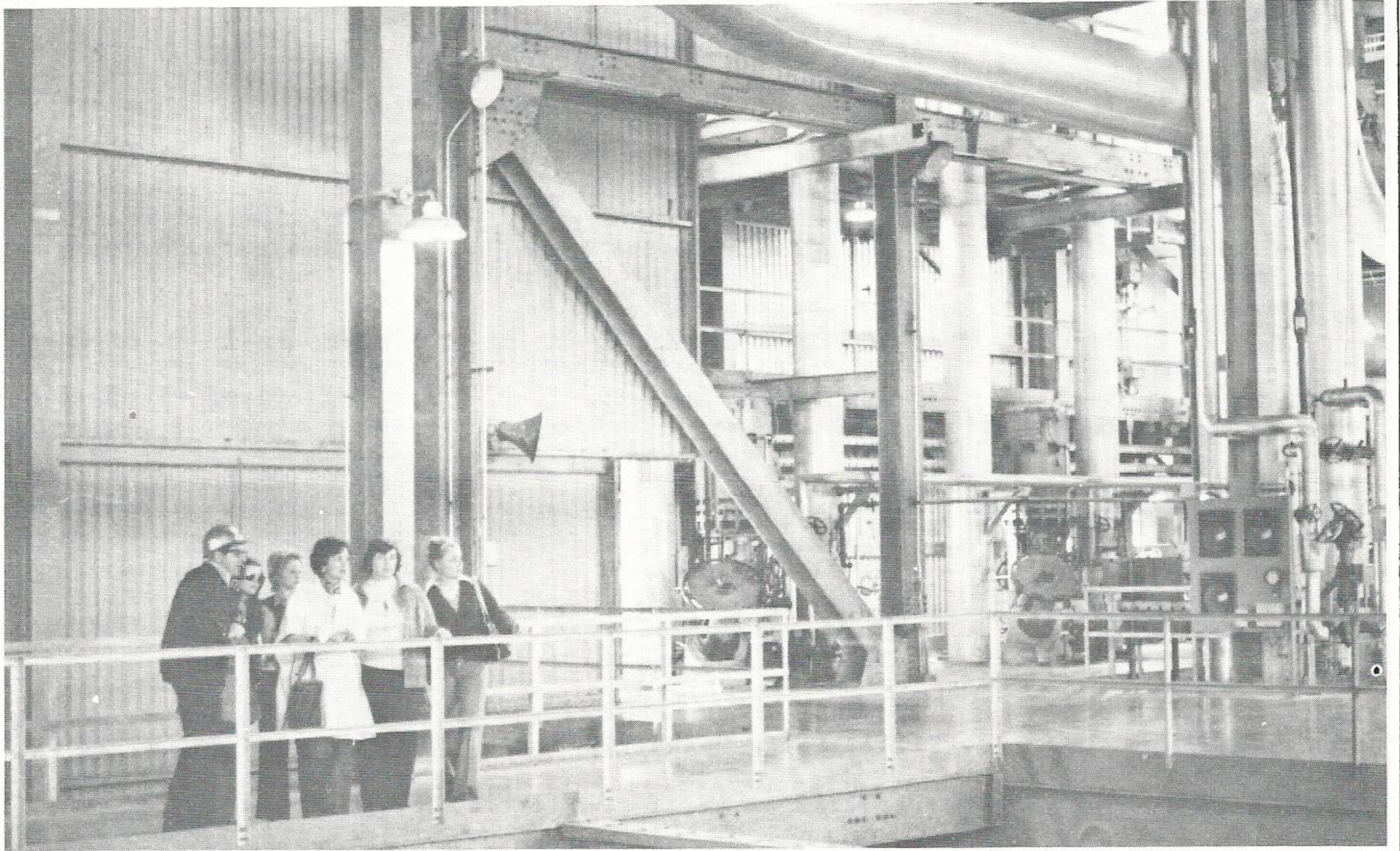


John Richard, serviceman for the company in Port Allen, has been elected to the Board of Aldermen in Addis, La. Richard was one of seven candidates who ran to fill two vacant seats. Richard has been employed by GSU for nine years.



**RETIREMENT PARTY**—A party honoring J. W. Hebert and his wife, Lois, was given by his friends and co-workers in the Beaumont Service Center recently. Hebert, a meterman first class, is calling it quits after 41 years of service. To send him off in style some barbeque mitts, safety goggles and a generous check for "incidentals" were presented, along with many well wishes for a happy retirement. (from Carolyn Motl)





Members of the League of Women Voters from the Orange and Beaumont areas toured the Sabine Station facility to find out first hand, what it takes to provide electric energy to the Golden Triangle. Jim Moss, plant superintendent, greeted the group and explained the operation of the power plant. The group was then broken down into smaller numbers and shown around the site. In this picture, Morris Sandifer shows five of the ladies the huge turbine generator of the number four unit. Mrs. Jerry Hughes, editor of the Orange League newsletter, described the tour and visit. "In a word, it was 'neat'. We saw an interesting efficient operation. It is clearly evident that inflation, etc., has influenced capital costs . . . and it's safe to say that each of us now has a different appreciation of our electrical power."



Doris Hay, Consumer Service Advisor, Lake Charles, explains "How To Read Your Electric Bill" to members of the Insurance Women of Lake Charles. Hay was the featured speaker at the group's monthly meeting held in the Pioneer Club.



Mike Yennie, director-EDP Implementation Services, was strapped when it came to remembering his Shakespeare, but did manage to say that a departmental reorganization could take place as a result of this surprise birthday party in his behalf. The candle atop Yorick's skull will come in handy when big Mike decides to read the catalogue that was given him, along with a dollar to buy anything he wants. It's a good thing that Yennie is, like Yorick as described by Hamlet, "a fellow of infinite jest."

# CONTACT: Questions & Answers

**Q.** Of the 128 power plants abroad, how many are "Breeder Reactors"?

**A.** The following list identifies operating breeder reactors, except as otherwise noted:

France — Marcoule Phenix  
Super Phenix (under construction)  
Rapsodie (experimental)

Germany (Federal Republic) — Kal-  
kar SNR - 300 (under construction)  
Karlsruhe KNK

Italy — Brasimone PEC (under con-  
struction)

Japan — Monju (under construc-  
tion)  
Joyo (experimental)

United Kingdom — Dounreay PFR

USSR — BN 600 (under construc-  
tion)  
Obninsk BR5 (experimental)  
Melekess BOR - 60  
Shevchenko BN350

**Q.** Of the 67 nuclear power plants in the United States, how many are privately owned?

**A.** Most of them are owned by investor-owned utilities. Others are owned by government agencies. Examples are the Hanford N reactor, EBR II, Shippingport, Browns Ferry 1, 2 and 3, TVA. Many are owned by state agencies and municipalities such as Power Authority of the State of New York (Fitzpatrick and Indian Point 3);, Nebraska Public Power District (Cooper), Omaha Public Power District (Ft. Calhoun 1), Sacramento Municipal Utility District (Rancho Seco 1), and others.

**Q.** How much money has been spent to date on River Bend?

**A.** At last count, \$210,068,294 for Unit 1; \$22,220,794 for Unit 2.

**Q.** How many millirems did it take to kill the people in Japan who were hit by the atomic bombs at Hiroshima and Nagasaki?

**A.** Depending on a person's state of health and body weight, a single radiation dose of between 400,000 to 600,000 millirems results in death, several weeks after the exposure.

**Q.** The nuclear plant that was shut down in Connecticut (mid-December)—has it been reopened?

**A.** The plant, Milestone, resumed full power operation the week of December 25, 1977.

**Q.** How long would it take GSU to get its initial investment back on a plant such as River Bend?

**A.** The economic life of all GSU power plants is 28 years.

**Q.** What is the approximate number of people River Bend will service?

**A.** Both River Bend units will service about 1.2 million people in Louisiana and Texas.

**Q.** What happens to Willow Glen when oil and gas start to run out? Will it be converted to nuclear? Some other form of fuel?

**A.** It cannot be converted to nuclear fuel. It could possibly be converted to coal. However, the existing boiler would have to be scrapped and a coal boiler added. It is questionable whether such a conversion could be economically justified.

**Q.** How long does it take the water to heat up (when the neutrons begin bombarding each other) before you can start rolling the turbine in a nuclear plant such as River Bend?

**A.** For all practical purposes, the addition of heat from the fission process to the water in the reaction is almost instantaneous. However, in order to limit the thermal stresses on the reactor pressure vessel, the plant startup from cold conditions

will take at least 6 to 7 hours, assuming all plant equipment can be brought on line without any problems.

**Q.** How hard would it be to get in a nuclear plant to teach a class.

**A.** Depending on what one wanted to teach, it is questionable whether one needs to get in a nuclear plant to teach it. Only authorized personnel will be allowed to enter the River Bend facility and this will be on an "as need only" basis. A sophisticated security system will be used to prevent unauthorized entry. While some training will be conducted at River Bend, particularly operator training, most classroom instruction need not be conducted at the power plant.

**Q.** Compare (nuclear) accidents to other types of generating plants.

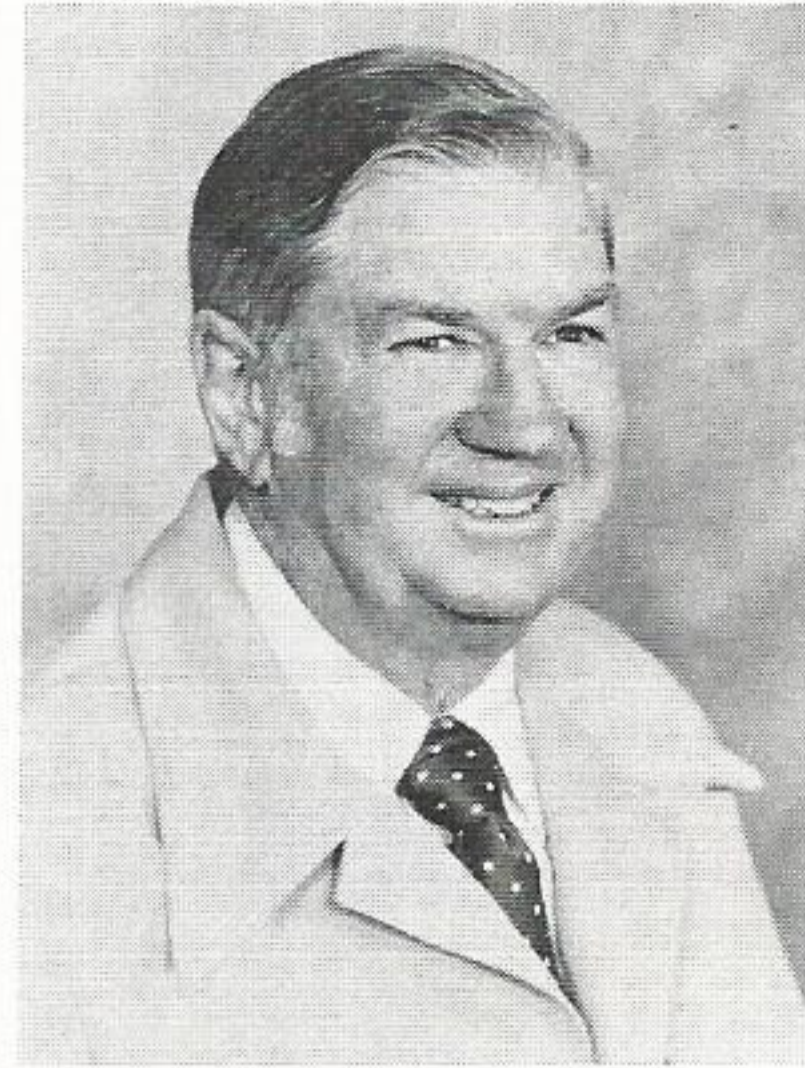
**A.** There have been no fatal accidents caused by nuclear reactor operations in the U.S. Navy or in commercial nuclear power plants. The accidents that have occurred are similar to those that occur at other industrial plants; falls, fires, etc.

**Q.** How do you get used uranium (spent fuel rods) into waste container?

**A.** Nuclear fuel that has produced all the energy possible is removed from the reactor by a fuel loading and unloading machine. This "spent" fuel is highly radioactive at this time and is stored for approximately six months to allow the radioactivity to decrease. The fuel is then loaded into specially designed shipping casks and sent by rail or truck to the reprocessing plants. At the reprocessing plant, the fuel can be examined in specially designed rooms called hot cells, in which all manipulations are handled by remote control from outside a thick wall that has special glass windows to observe results. In all the unloading, storing, re-loading in shipping casks, transportation and reprocessing, the people involved are carefully shielded from the radioactive spent fuel.

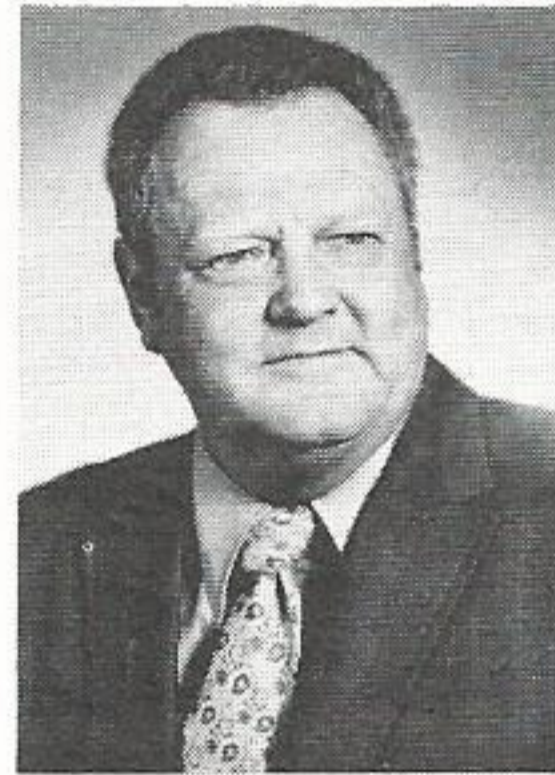
# SERVICE AWARDS

## 40 YEARS



**James K. Inglehart**  
Electric T&D  
Conroe

## 30 YEARS



**Marvin L. Day**  
Gas  
Baton Rouge



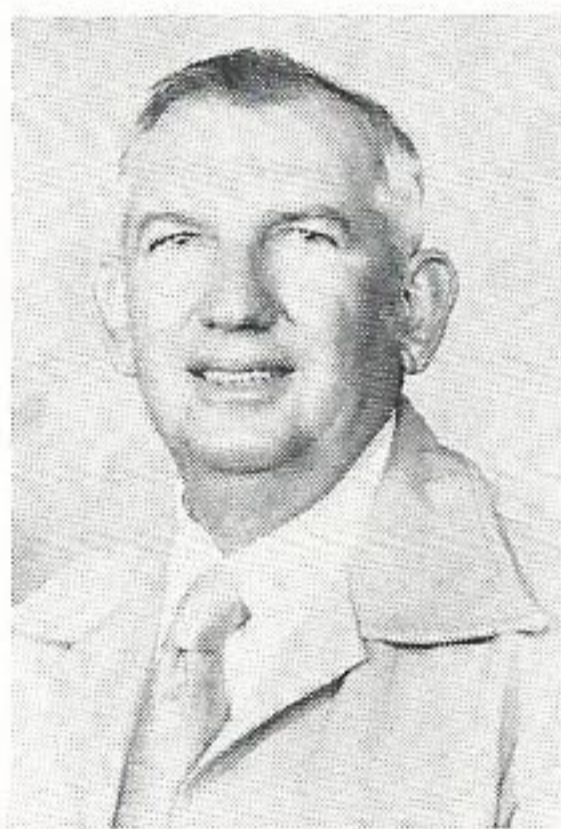
**Oscar Smith**  
Division Accounting  
Lake Charles



**Dudley J. Williford**  
Division Production  
Beaumont



**Raymond D. Woodard**  
Division Production  
Port Arthur



**Robert E. Boenker**  
Electric T&D  
Conroe

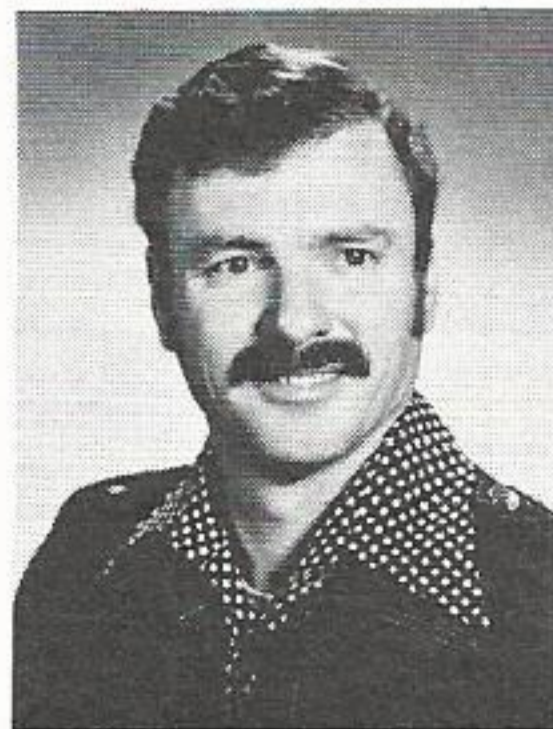
## 20 YEARS



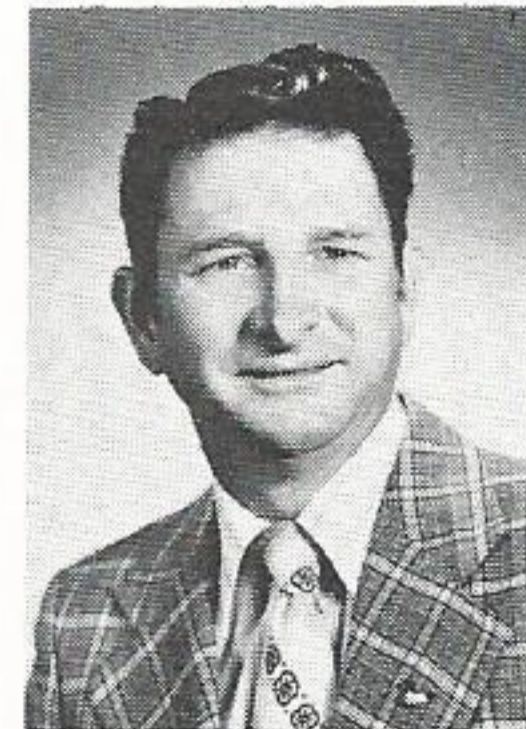
**John H. Broussard**  
Electric T&D  
Baton Rouge



**James V. Faggard**  
Division Production  
Port Arthur

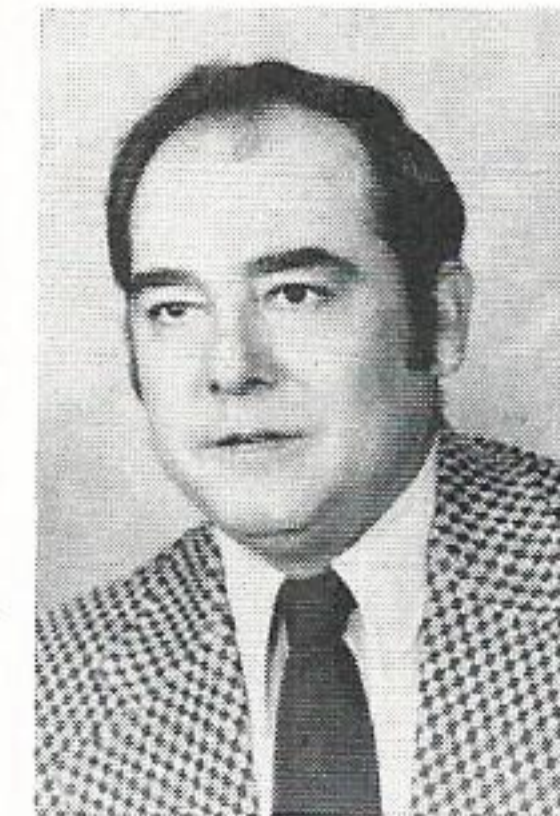


**Hugh A. Hall**  
Electric T&D  
Baton Rouge

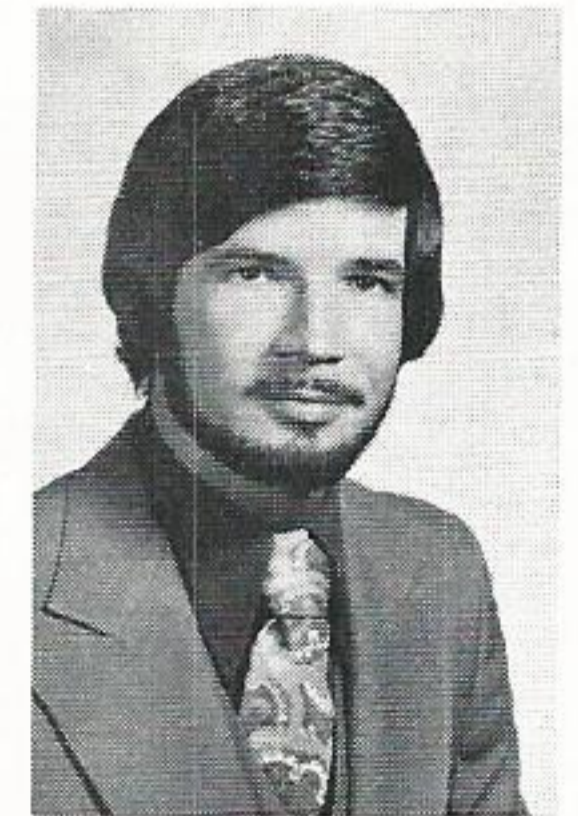


**Robert T. Stephenson**  
Electric T&D  
Denham Springs

## 10 YEARS

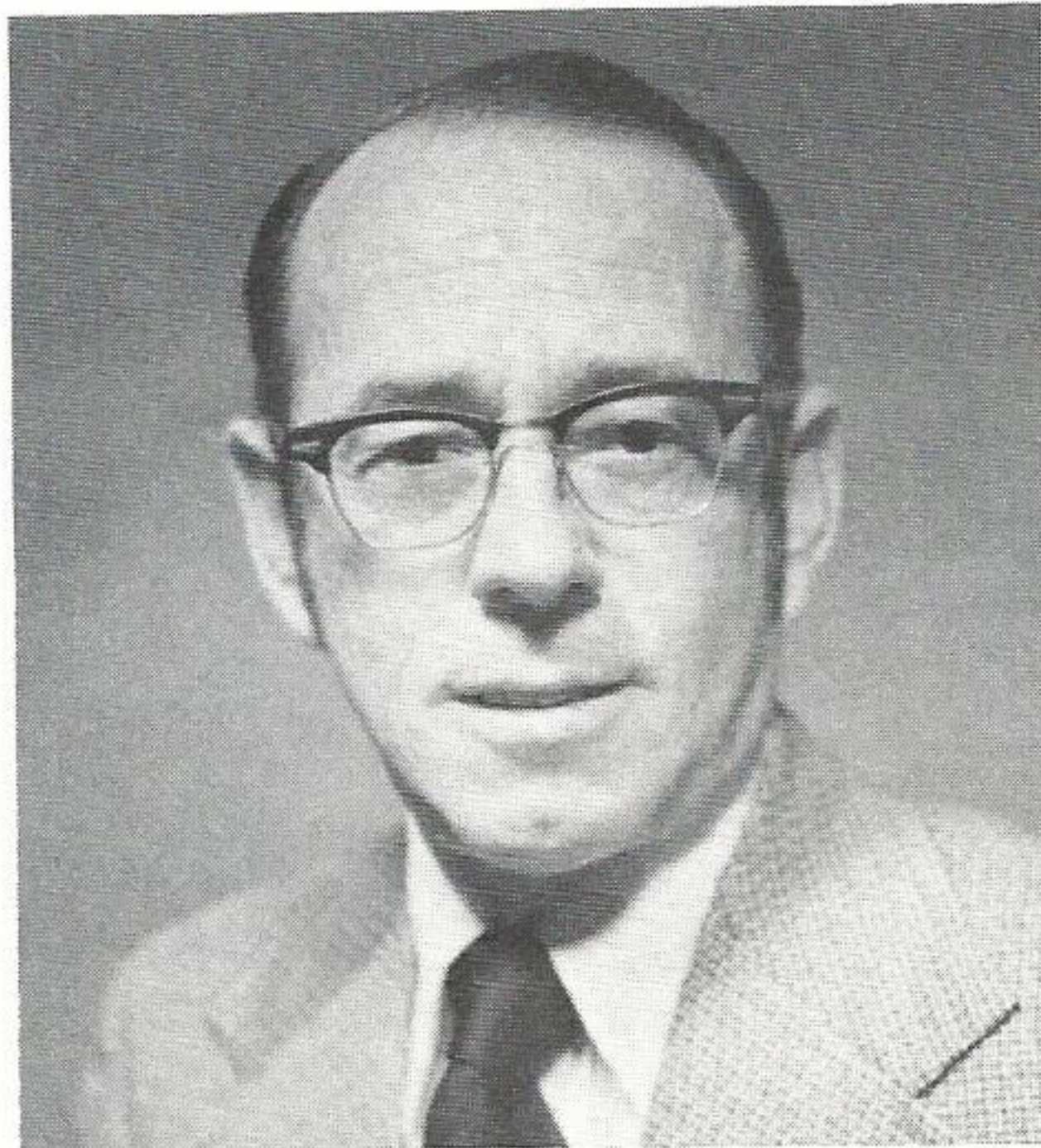


**Joe Gorney**  
Electric T&D  
Conroe

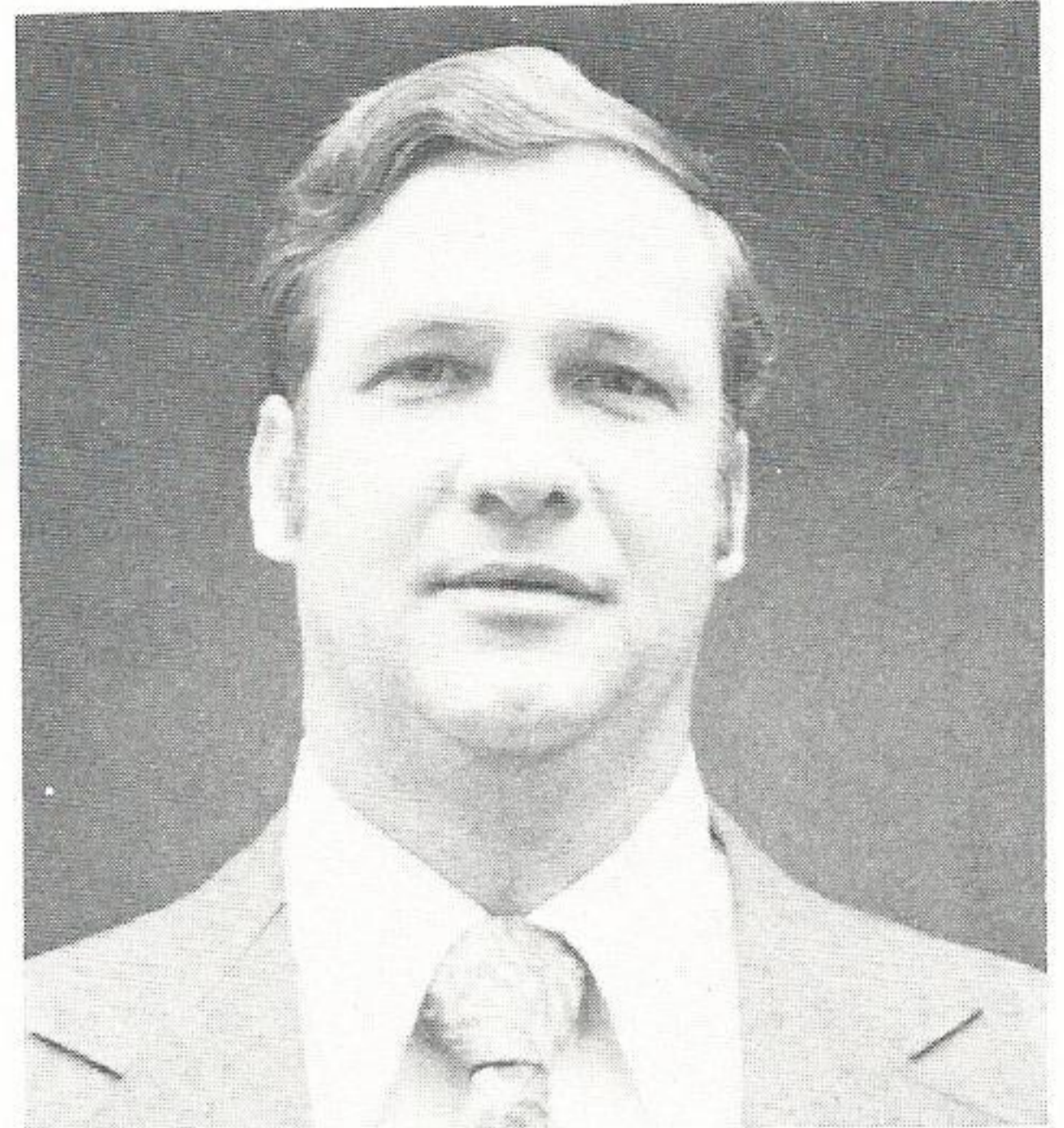


**Lenard J. Meche**  
Electric T&D  
Lafayette

# PEOPLE ON THE MOVE



**Joe Robichau**



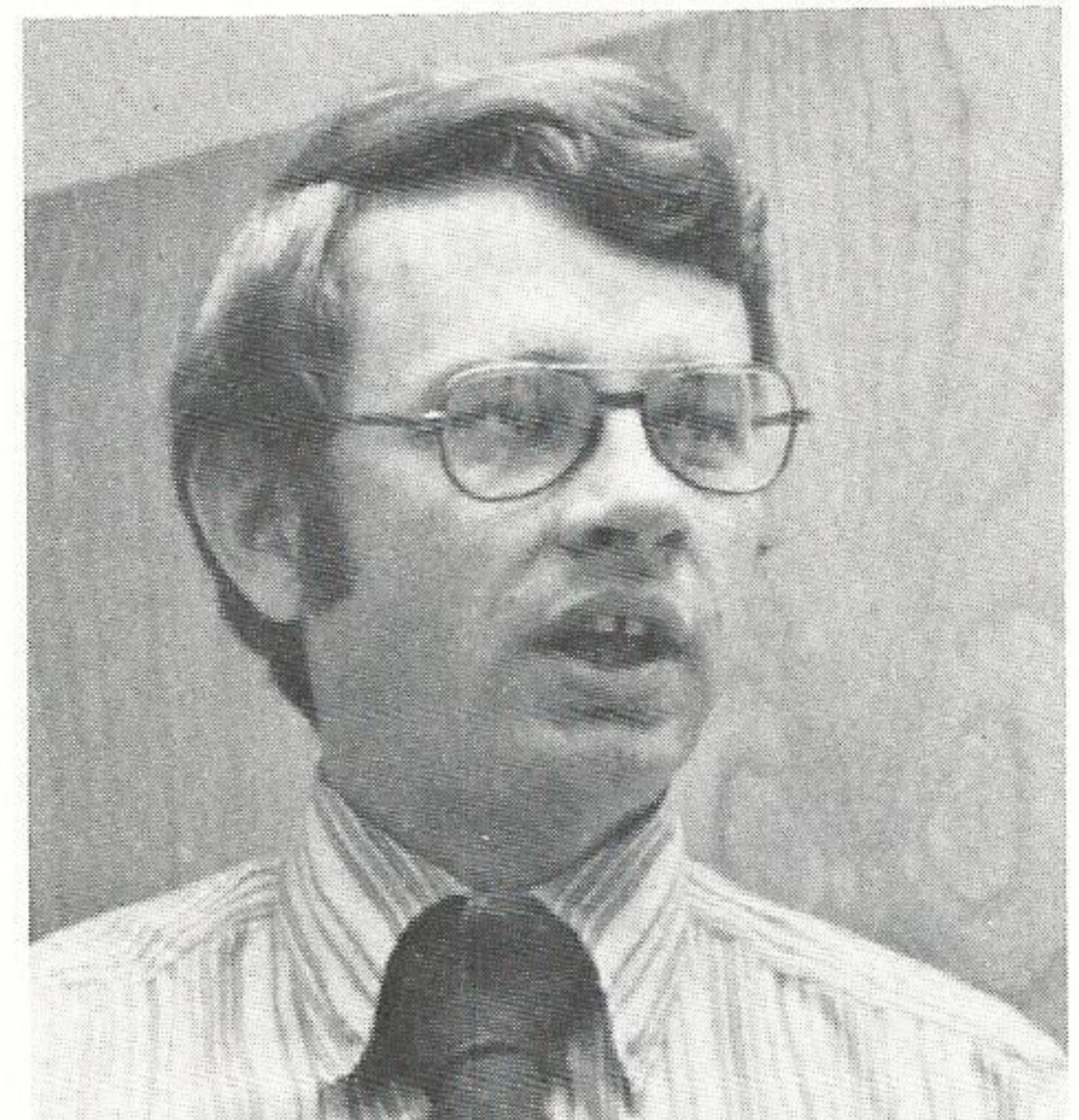
**Nolan Walker**



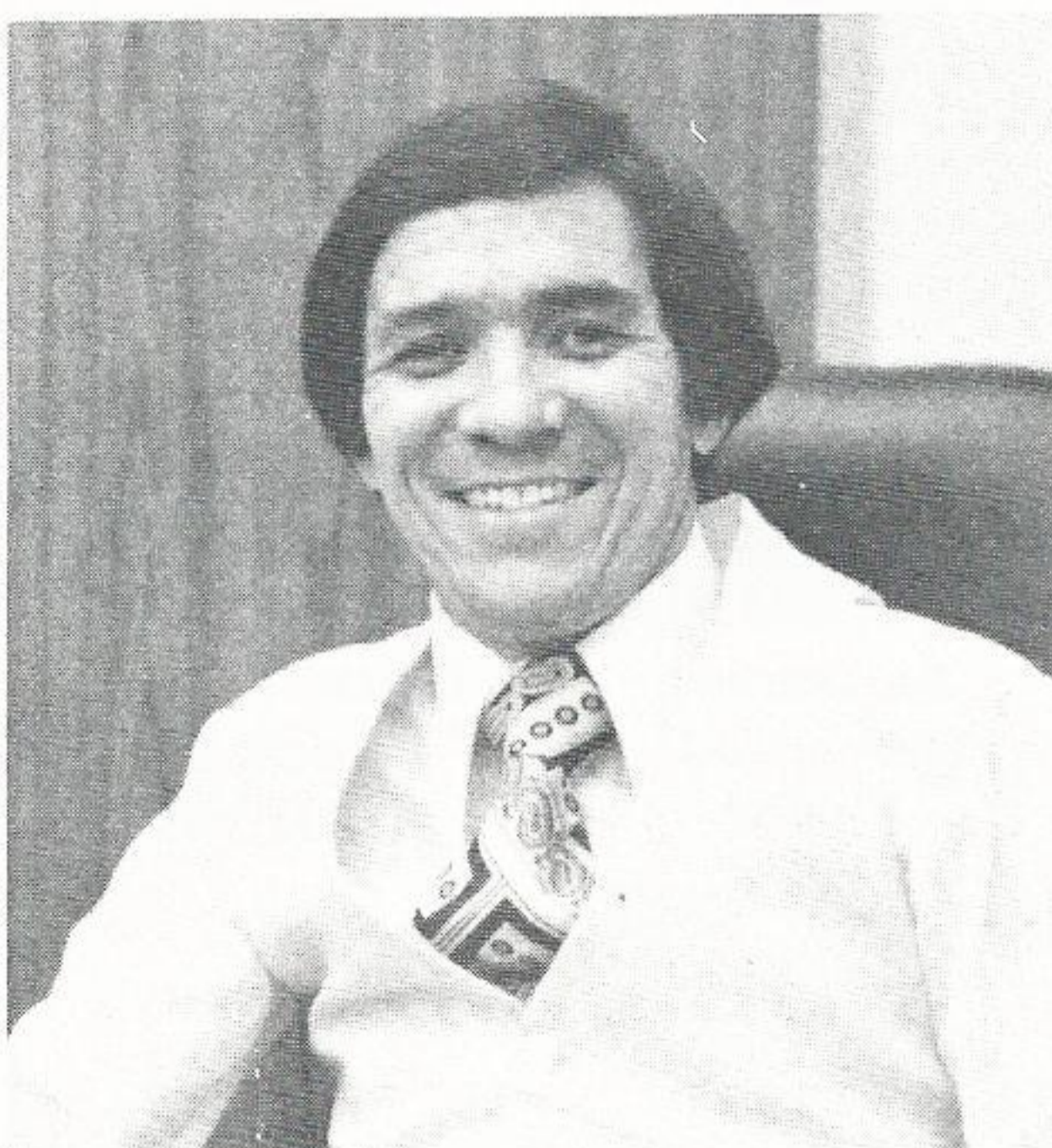
**Hal Tierney**



**Henry Jenkins**



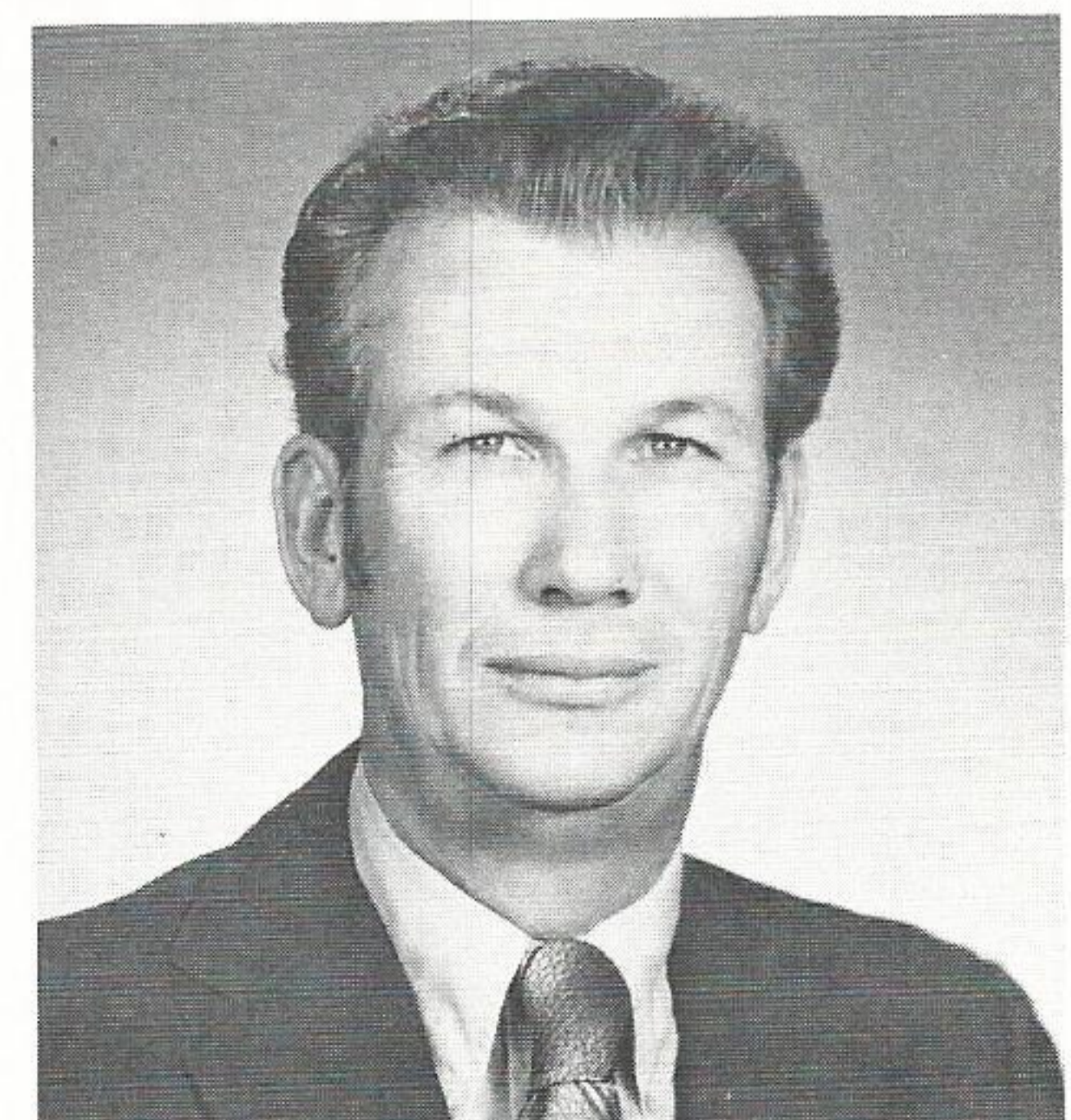
**Jon Curless**



**Erwin Berger**



**Maxie Fair**



**Aduron Cross**

**Joseph O. Robichau**, former executive assistant in Energy Development, has been promoted to Manager-Project Services.

A native of Beaumont, Robichau has been an employee since 1957 following his graduation from Lamar University with a bachelor's degree in electrical engineering. He has held various assignments over the years including service in engineering, Information and Data Services, and Sales and Marketing. In 1977 he was named executive assistant in Administrative Services, and later that same year was called on to join the company's energy development efforts as executive assistant.

Robichau is a veteran of the Navy serving during the Korean conflict. In addition to Lamar, Robichau also has successfully completed advanced management training at the University of Michigan (Public Utilities Executive Program), and the Harvard University Advanced Management Program.

He is a registered engineer in Texas and a member of the Institute of Electrical and Electronics Engineers. He is married to the former Betty Jean Pate of Beaumont, and the couple has six children, Jo Ellen Kiester, Joe, Jr., David, Susan, Margaret and Mark.

**Nolan E. Walker**, engineer, Power Plant Engineering, has been transferred to the River Bend Project and promoted to general maintenance supervisor.

Walker, a Navy veteran of the nuclear submarine service, was employed in 1975. He is a native of Houston and a 1975 honors graduate of the University of Texas with a bachelor's degree in nuclear engineering.

Walker is married to the former Sandra Wilhelm of Houston, and the couple has two children, Cynthia and Scott.

**Hal G. Tierney**, senior administrative accountant, is promoted to supervisor-Budgeting and Reporting, River Bend Project.

Tierney is a native of Beaumont and was graduated in 1954 from Lamar University with a degree in business administration. He was named accountant in Plant Accounting in late 1959, and has had assignments in classification, financial reports, regulatory reports and general accounting.

He is married to the former Barbara Boersman of Port Arthur, and the couple has two children, Kathleen and Sharon. Tierney is a veteran of the Army, and is active in various professional accounting organizations, as well as civic groups including the Lions Club, and Toastmasters.

**Henry O. Jenkins**, station supervisor, Louisiana Station, has been promoted to operation supervisor.

Jenkins, a native of McDonald, W.Va., was employed in 1946 as an operator's helper at Louisiana Station. He has progressed through a number of power plant assignments including promotions to turbine operator, turbine engineer, switchboard operator, head fireman, shift supervisor and station supervisor in 1977.

He is a veteran of the Army with service during World War II, and is married to the former Mary Imogene Broussard of Baton Rouge. The couple has one son, Edward, and two grandchildren.

Jenkins is a life member and past commander of the Capital City Chapter No. 5 of D.A.V., the American Legion, the Veteran of Foreign Wars, and United Commercial Travelers.

**Jon H. Curless**, supervisor, Plant Accounting, has been promoted to chief accountant of the River Bend Project. As such he will handle all matters related to fiscal aspects of the project.

In a related move, **Ervin W. Berger**, senior administrative accountant, is promoted to supervisor of Plant Accounting.

Curless was employed in 1969 as administrative accountant in System Treasury. He has held various assignments in the accounting field working in Financial Services and Accounting Services, and was promoted to his former position in 1977.

He is a native of Baker, Mont., and a five year veteran of the Air Force. He is a 1969 graduate of Sam Houston State University with a bachelor's degree in economics. He and his wife, the former Nancy Richardson of Alvin, Tex., have two children, Jared and Amanda.

Berger, a native of Shiner, Tex., was employed in 1970 in System Treasury as

administrative accountant. He was promoted to senior administrative accountant in 1974 and has held assignments in Accounting Services in financial and plant accounting.

Berger is a veteran of the Army, and a 1970 graduate of the University of Texas with a bachelor's degree in general business. He is married to the former Lynette Darilek of Moulton, Tex., and the couple has one daughter, Shawn. He is active in the Young Men's Business League of Beaumont, the United Appeals and the Y.M.C.A.

**Bill D. Horelica**, senior system analyst in EDP Implementation Services, has been promoted to EDP Systems Design Supervisor.

The Wharton, Tex., native was employed by the company in 1969 as a system analyst. He is a 1966 graduate of Lamar University with a bachelor's degree in management.

He is a veteran of the Army and is married to the former Patricia Ann Raiford of Beaumont. The couple has two children, Steven and Melissa.

Horelica is active in scouting work and in Little League baseball.

**Maxie S. Fair**, stenographer-senior in Division Accounting in Baton Rouge, has been transferred to Industrial Relations and promoted to Personnel Department Clerk.

Fair, a native of Baton Rouge, was re-employed in 1974 in Division Accounting. She had previously been employed in 1960 as a clerk in Division Accounting. She became stenographer senior in 1968, and later that same year was promoted to executive stenographer. She was promoted to supervisor of Customer Accounts in 1973.

Fair attended the University of Southeastern Louisiana, and is married to Percy A. Fair, Jr. of Baton Rouge.

**Norma P. Durdin**, personnel assistant in Salary Administration, has been promoted to compensation analyst.

Durdin, a native of Beaumont, was employed in 1949 as voucher clerk in accounting. She was promoted to senior clerk in 1952, and in 1954 was transferred to the Personnel Department as a clerk. She was promoted to personnel assistant in 1967.

She has one daughter, Suzanne (Mrs. David Ryan) of Houston, and a granddaughter, Jennifer. She is married to Jim Durdin, Beaumont.

Willow Glen Station Superintendent J. T. Graves has announced the following promotions at the station: **Aduron B. Cross**, operation supervisor, is promoted to assistant plant superintendent; **Terrance E. Hernandez**, shift supervisor, is promoted to operation supervisor; **Clyde W. Newman**, control operations foreman, is promoted to shift supervisor; **Daniel V. Garon**, maintenance planner, is promoted to supervisor, contract crews; and **John N. Watlington**, test technician first class, is promoted to electrical maintenance foreman.

Cross, a native of Baton Rouge, started as an oiler for GSU in 1941 at Louisiana Station. While at Louisiana Station, he was operator's helper, auxiliary operator, turbine operator, second fireman, turbine engineer, switch board operator and head fireman.

He was transferred to Willow Glen in 1958 as a boiler operations foreman. He later became control operations foreman and operation supervisor.

A graduate of Baker High School, Cross served in the South Pacific and China in the Marine Corps from 1944 through 1946. He is married to the former Margie McCulloch of Baker.

Cross is on the Plumbing and Air Conditions Board for Baker, and is also a charter member of the Baker Civic Club. He and his wife have a son, Michael and a daughter, Mrs. Patricia Davies. They also have one grandchild, Sean Davies.

Hernandez, from Baton Rouge, began with the company as operator's helper in 1952 at Louisiana Station. From there, he progressed to auxiliary operator and turbine operator before being transferred to Willow Glen in 1963 as an equipment operator. He has served as control operations foreman at Willow Glen as well.

The U.S. Air Force veteran is a graduate of Istrouma High School in Baton Rouge, and is married to the former Ella Thirlaway of Louisville, Colo. They have three children: Patricia, Edward and Mrs. George H. Guidry.

A native of Hammond, La., Newman began his career with Gulf States as an

equipment operator at Willow Glen in 1972. He then became control area operations foreman in 1976.

Married to the former Laura McCulloch, Newman is a graduate of Hammond High School. He and his wife have three children, Robin Ann, Dwayne Edward, and Yvonne Aline. The family resides in Gonzales.

Garon went to work for the company at Louisiana Station as a repairman's helper in 1939. Then he became an oiler, fuel operator, operator's helper, turbine engineer, switchboard operator, oiler operations foreman and station engineer. In 1959, he moved to Willow Glen Station as an operation supervisor. He later became a maintenance planner.

A native of Livingston, La., Garon graduated from University High School of Baton Rouge and served in the U.S. Navy during World War II. He is married to the former Dorothy Loretta Phipps of Charleston, W. Va., and the couple has one daughter, Peggy, and two sons, Larry and Danny.

Watlington began his career with GSU as a mechanic's helper at Willow Glen in 1960. He then served as an electrician second class, electrician first class and test technician first class.

Watlington is a native of Baton Rouge and is a graduate of Baton Rouge High School. He is also a veteran of the U.S. Air Force.

**Carl N. "Nick" Harper**, market research analyst in System Marketing, has been transferred to Nuclear Services and named computer analyst.

Harper, employed in 1970 as systems analyst in IDS, is a native of Fort Worth. He is a 1974 graduate of Lamar University with a bachelor's degree in industrial engineering.

Harper is married to the former Anne Hutchins of Atlanta, Ga., and the couple has one daughter, Kirsty. He is active in various local organizations including the Beaumont Heritage Society, Beaumont Art Museum, the Community Players and the Lamar Ex-students Association. Harper is also an Engineer In Training, Texas Board of Registration.

Six changes have been announced within the Financial Accounting Department in Beaumont.

**Herbert Stein**, senior administrative accountant, is promoted to supervisor-General Accounting; **David Rogers**, senior administrative accountant, is promoted to supervisor-Business Systems; **Camilla Adams**, administrative accountant, is promoted to senior administrative accountant, General Accounting; and **William Weatherford**, administrative accountant, is promoted to senior administrative accountant in General Accounting.

In other moves, **Thomas Ballard**, senior administrative accountant has been transferred to Financial Accounting, and **Gary Kramer**, senior administrative accountant, goes to Plant Accounting.

Stein, a native of Pierre, S.D., has been employed since 1969. He joined the company as an administrative accountant in Accounting Services, and later transferred to Budget. In 1976 he was promoted to senior budget analyst in Financial Services.

Stein is a 1969 graduate of the University of Southwestern Louisiana with a bachelor's degree in business administration. He is married to the former Rebecca Ann Baker of Fenton, La., and the couple has one son, William.

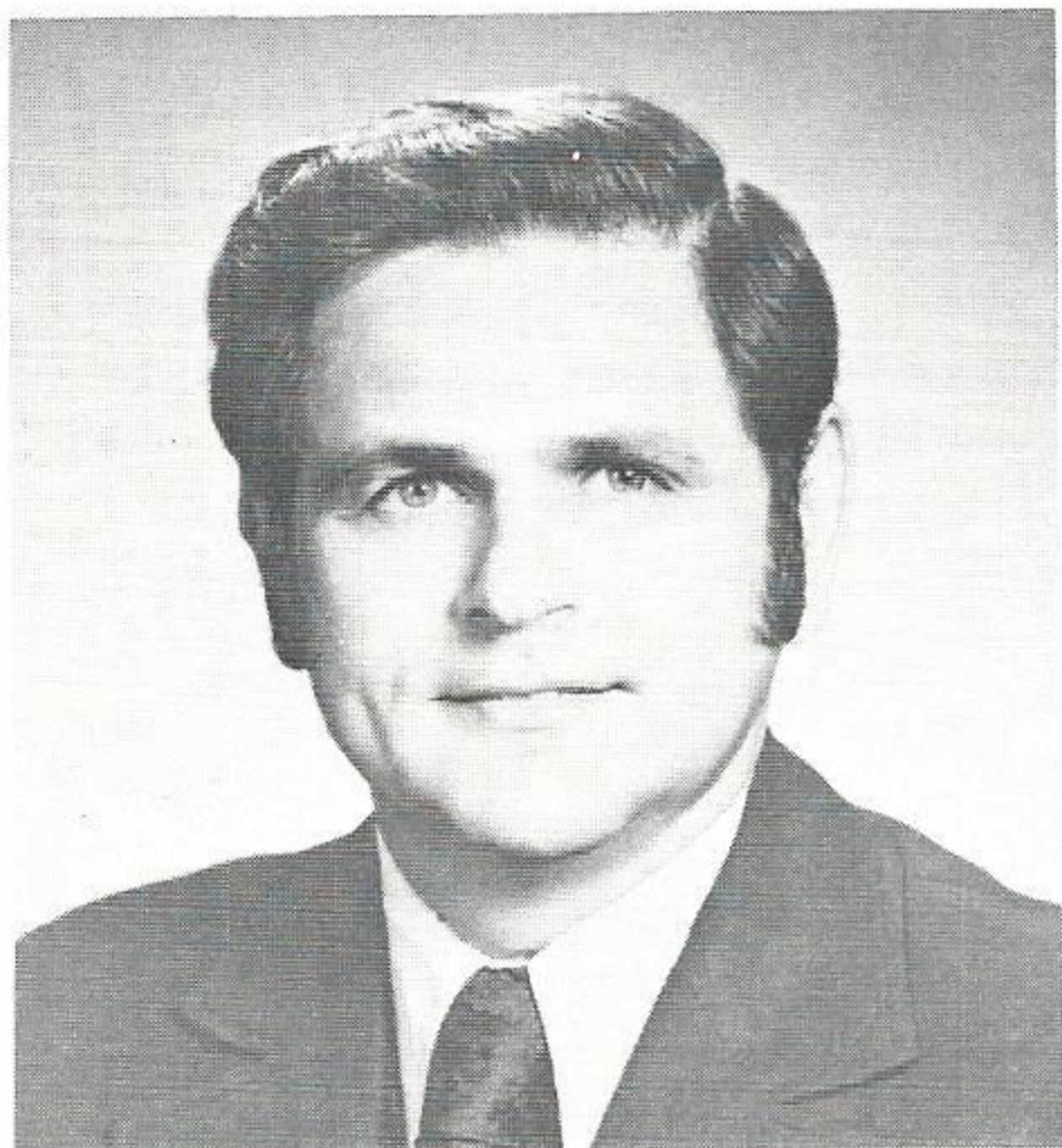
Rogers, a native of Beaumont, was employed in 1975 as an administrative accountant in Plant Accounting. He transferred to Business Systems and was later promoted to senior administrative accountant.

The Navy veteran is a 1974 graduate of Lamar University with a bachelor's degree in accounting. He is married to the former Kathleen Riley of Beaumont, and the couple has one daughter, Tiffany Larisa.

Adams is a native of Shreveport and was employed in 1968 as administrative accountant. She has had various accounting assignments including financial administrative coordinator in Financial Services and staff accountant attached to the administrative staff of the executive vice president.

She is a 1968 graduate of Lamar University with a bachelor's degree in accounting, and has three children, Zoe, Christopher and Camilla.

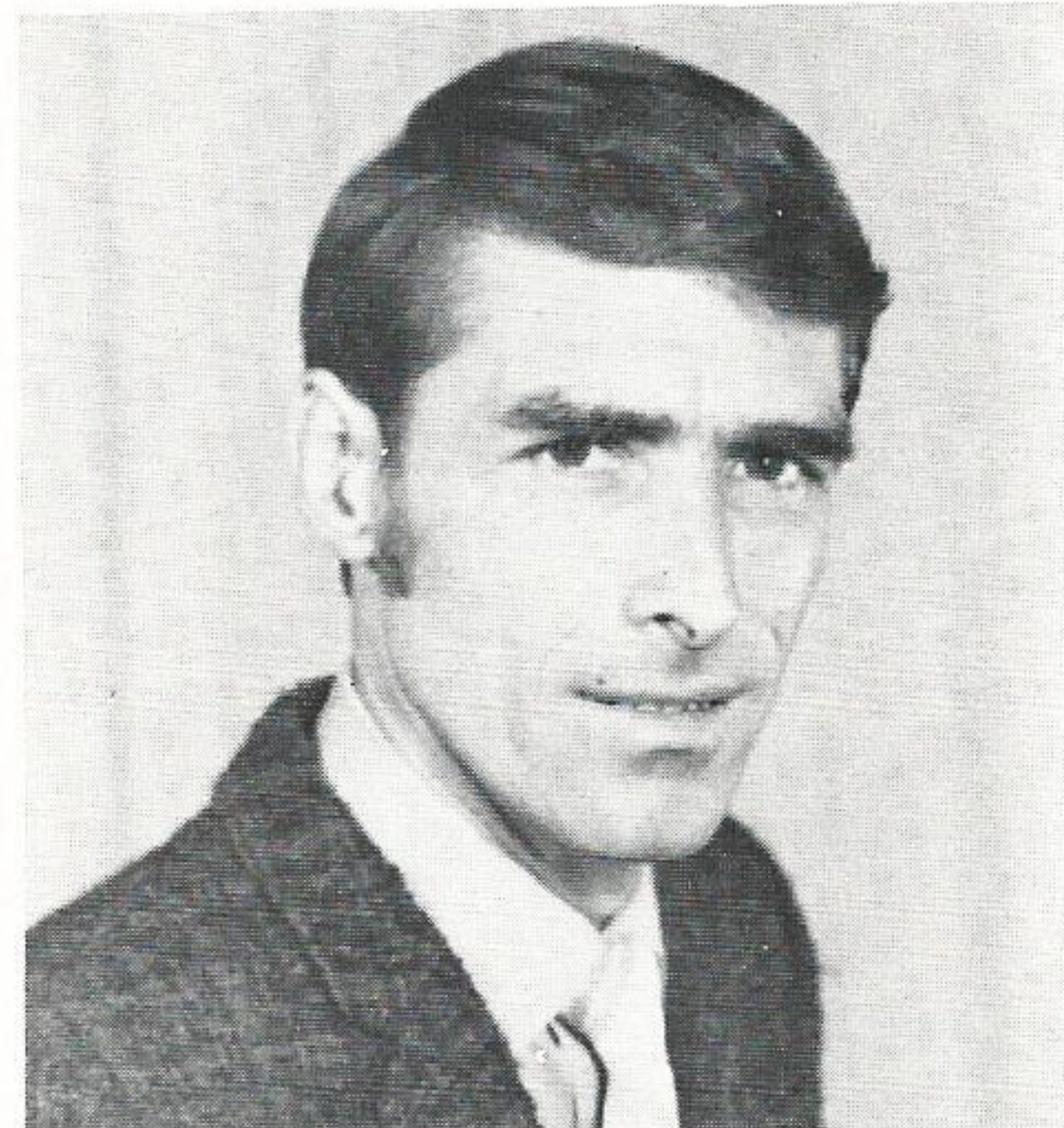
Weatherford was employed in 1973 in System Billing. The Center native has held assignments in Customer Account-



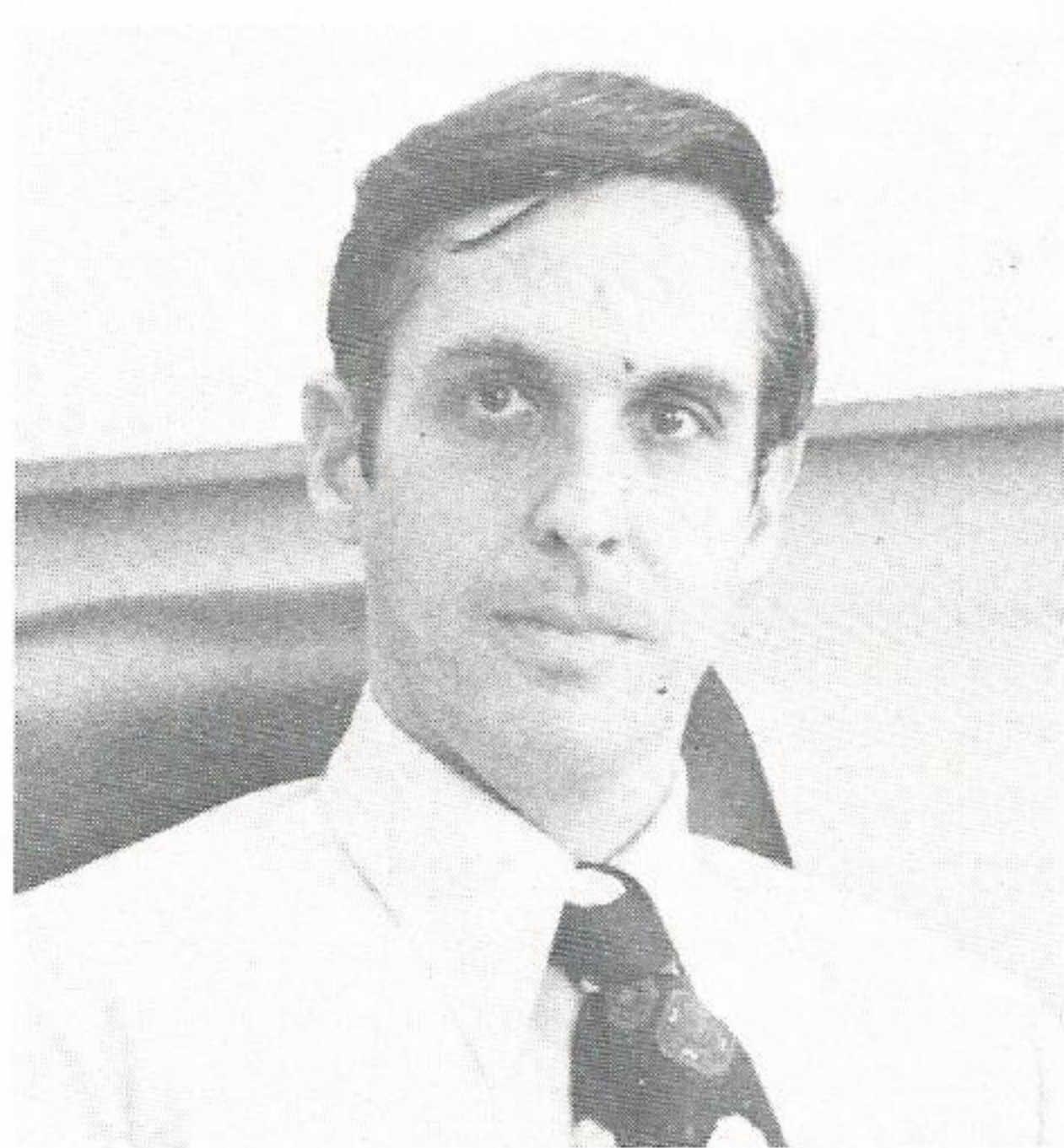
**Tearance Hernandez**



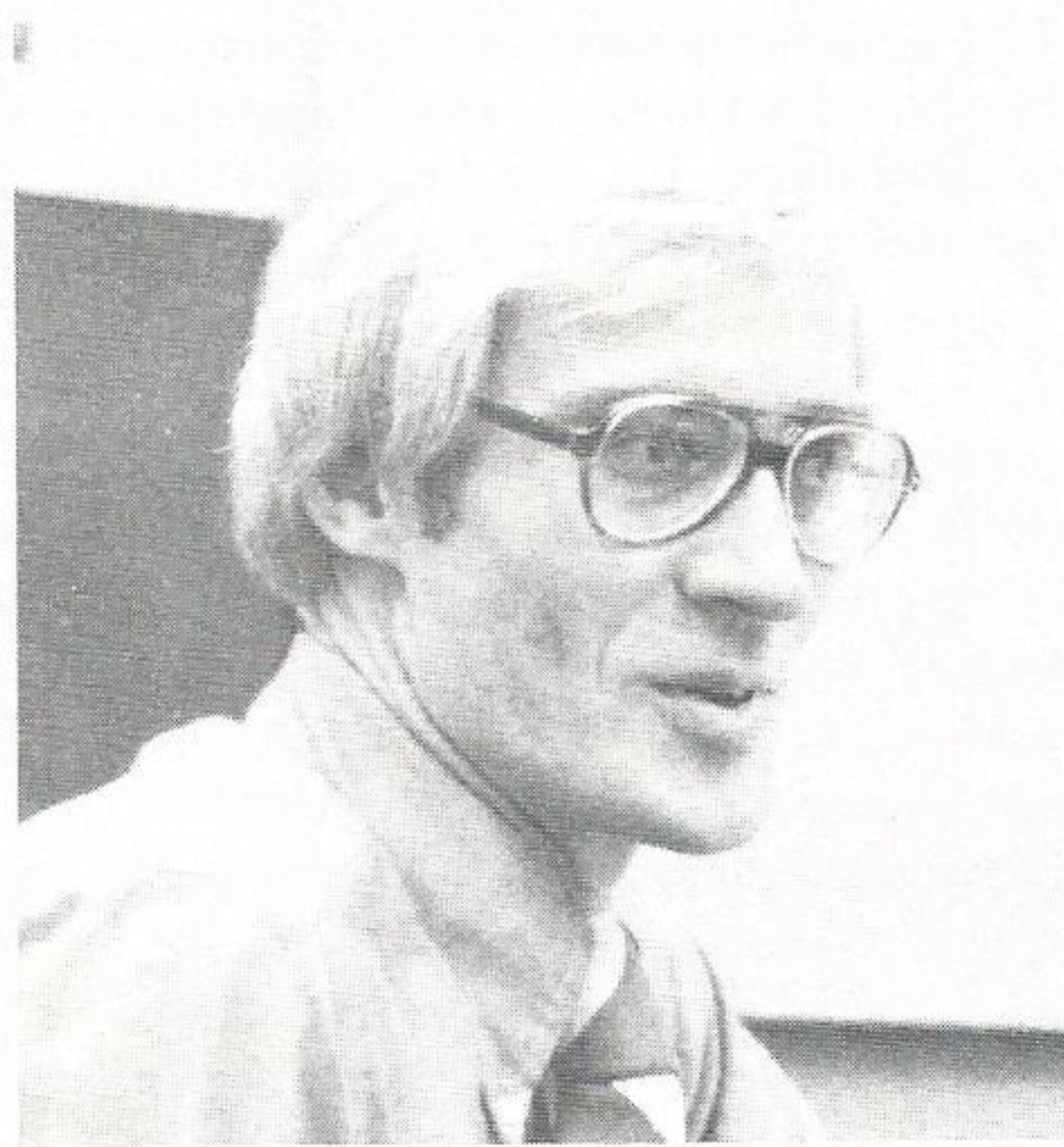
**Clyde Newman**



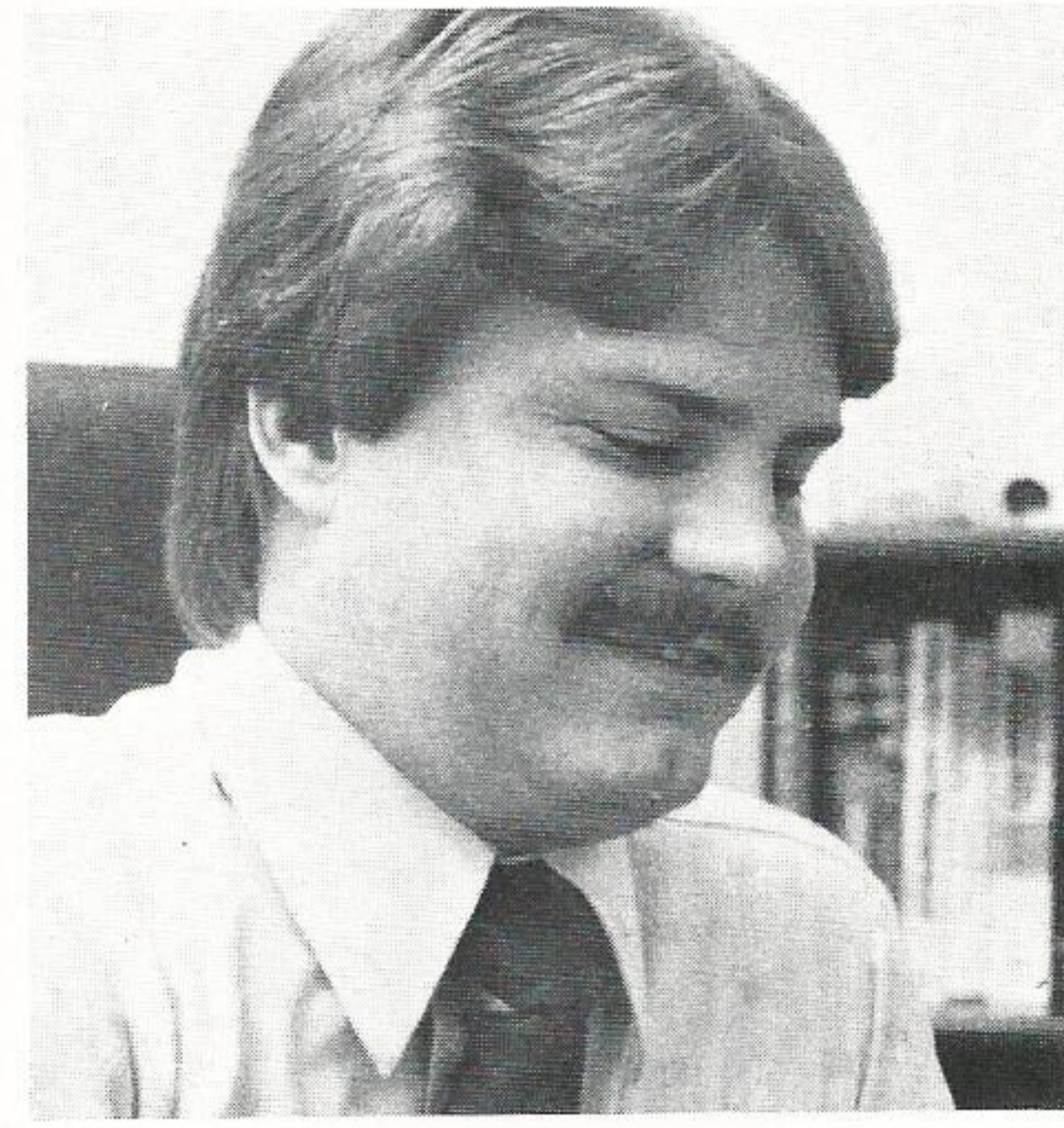
**John Watlington**



**Nick Harper**



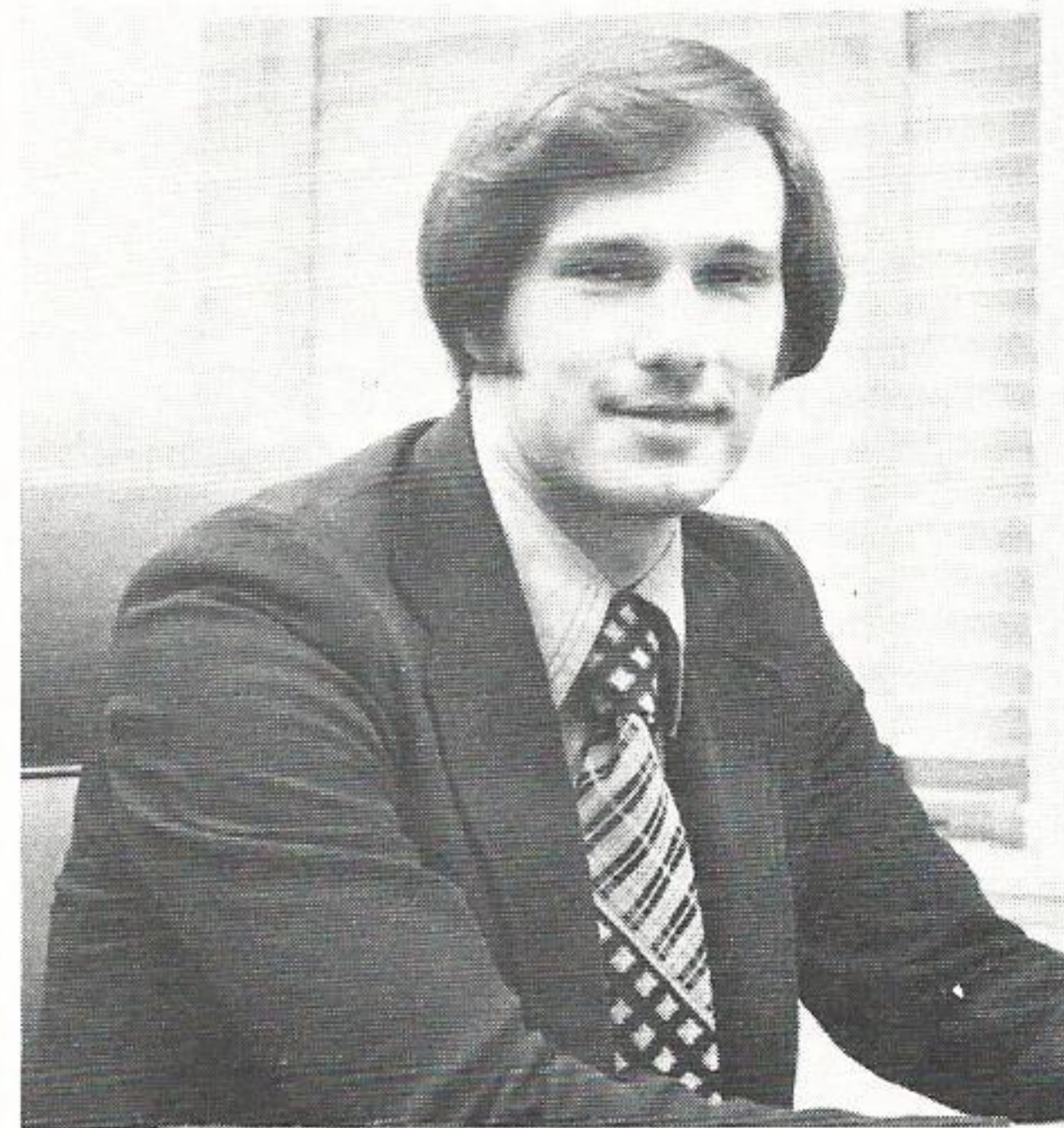
**Hubert Stein**



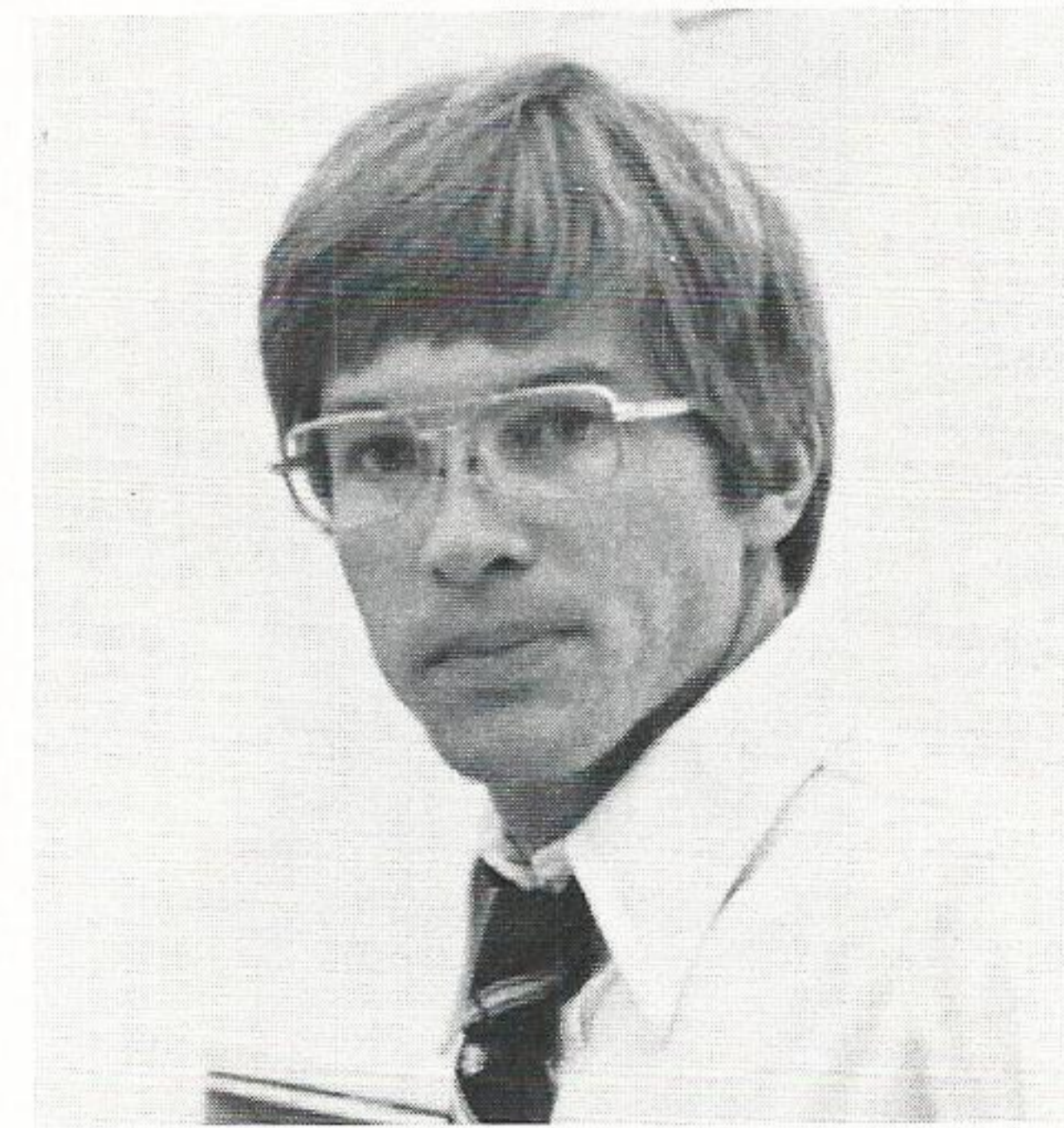
**David Rogers**



**Camilla Adams**



**Thomas Ballard**



**Gary Kramer**



**J. R. Wheeler**



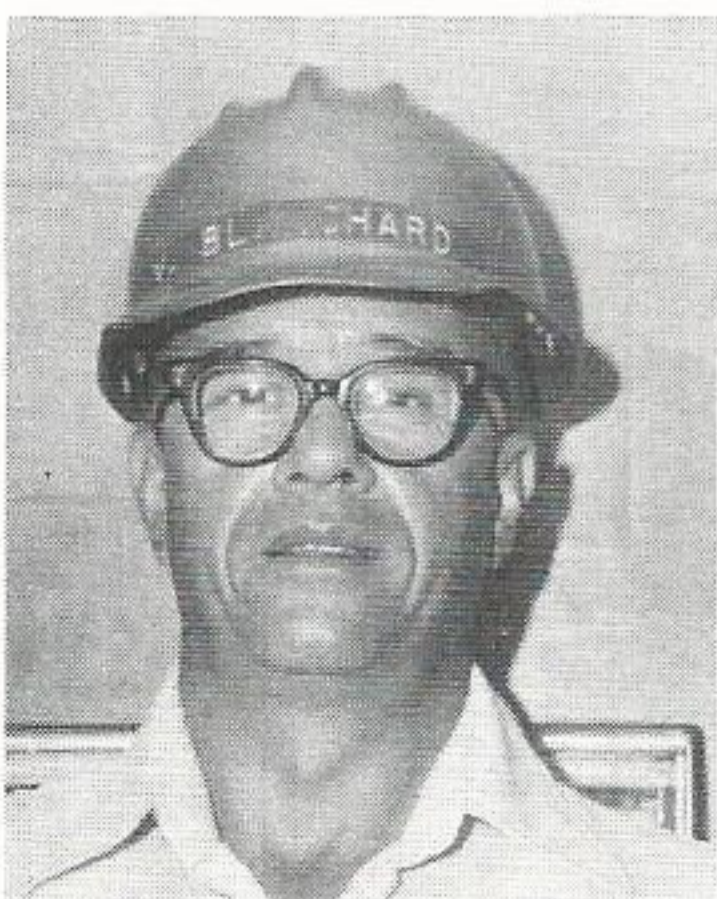
**John Prescott**



**John Gammage**



**Jean Spitznagle**



**Vernon Blanchard**

ing and General Accounting.

He is a 1973 graduate of Stephen F. Austin University with a bachelor's degree in accounting. He is a veteran of the Army and is married to the former Wanda Greer of Nederland, an SFA graduate and now a teacher at St. James in Port Arthur.

Ballard, a native of Hillsboro, Tex., was employed in 1974 in Plant Accounting. He is a 1974 graduate of Sam Houston State University with a bachelor's degree in accounting.

Ballard is married to the former Bessie Sadoski of Houston, and the couple has one son, Ryan.

Kramer is a native of Citronelle, Ala. He was employed in 1973 in System Billing and has held various assignments in Accounts Payable, General Accounting and Plant Accounting.

Kramer is a veteran of the Army and a 1973 graduate of Lamar University with a bachelor's degree in accounting. He is married to the former Janet Key of Hampshire, Tex., and the couple has two children, Keven and Amy.

Jimmie Smith, superintendent at Neches Station, has announced the following promotions at the plant: **J. R. Wheeler**, control operations foreman, is promoted to shift supervisor; **John Prescott**, master repairman, is promoted to mechanical maintenance foreman; and **John E. Gammage**, head fireman, is promoted to control operations foreman.

Wheeler started with the company in 1949 as an operator's helper at Neches Station. He progressed from there to auxiliary operator, second fireman, equipment operator, turbine engineer, head fireman and then to his former position of control operations foreman.

A native of Leesville, La., Wheeler graduated from South Park High School in Beaumont. He is married to the former Linda Jean Butler of Port Arthur. They attend First Baptist Church in Vidor, and have two sons, John and Steven.

Prescott, a native of Opelousas, La. began his career with the firm as a laborer at Neches Station. He then became a laborer class A, special laborer and mechanic's helper. Later he was made a repairman second class, a repairman first class and then a master repairman.

Gammage, born in Beaumont, started with GSU in 1949 as an operator's helper at Neches. He served in the U.S.

Army, then returned to the company as an operator's helper and later became an auxiliary operator.

He progressed from turbine operator to second fireman, equipment operator, turbine engineer, switchboard operator and head fireman.

He is a graduate of South Park High School in Beaumont, and attended Lamar University.

He and his wife, Anna, have four children: James, Jr., Marcia, Melanie and Frank.

**Jean L. Spitznagle**, confidential records clerk-Payroll, Accounting Services in Beaumont, has been transferred to Salary Administration, Personnel Department, and is promoted to personnel department clerk.

Spitznagle, a native of New Orleans, began work with the company as a clerk in Accounting Services in 1963. In 1970, she became a senior clerk in the department, and later was named confidential records clerk.

She is a graduate of Beaumont High School and attended Lamar University for two years. Spitznagle is active in the Bethlehem Lutheran Church of Beaumont and is past chairperson of the Altar Guild of that church. She is also past chairperson of the ALCW, American Lutheran Church Women.

Spitznagle has two daughters: Sherrie, presently in the 10th grade at Beaumont Charlton Pollard; and Vicki, in the 8th grade at Austin Junior High.

**Vernon Blanchard, Jr.**, shift supervisor at Louisiana Station, has been promoted to station supervisor.

Blanchard began his career with GSU in 1948 as an operator's helper at Louisiana Station. He progressed to auxiliary operator, turbine operator, second fireman, turbine engineer, switchboard operator and head fireman until he became shift supervisor in 1971.

The Lottie, La., native is a graduate of Livonia High School. He served with the U.S. Army, and is married to the former Louise Gaudin. The couple has five children: Barbara, 20; Douglas, 16; Randy, 14; Sandra, 12; and Larry, 9.

The family attends St. Anthony Catholic Church of Baton Rouge. Blanchard is also a member of the U.C.T., and Board of Directors of the Kilowatt Klub.



# RETIREMENTS

**Ed Allen**, a utility man in the Huntsville Line Department, retires April 1, after 33 years of service to the company.

Allen came to the company in 1944, beginning as a helper in the Ice Department in Huntsville. Later that year he became a helper in T&D. In 1953, he became a meter reader, and in 1967 attained his position of utility man.

Allen is a native of Richards, Tex. He attended San Jacinto High School.

After 21 years of service, **John Bell, Sr.**, laborer II at Louisiana Station, retires in April.

The native of Baton Rouge began his career at GSU in 1946 as a laborer at Louisiana Station. In 1949 he became a laborer II.

Bell is a graduate of McKinley High School in Baton Rouge.

**Francis E. Mathis**, assistant to the general line foreman in the Lake Charles T&D Department, retires in April after 41 years of service to the company.

Mathis, a native of Lake Charles, began his career with the company in 1937 as a helper in Lake Charles T&D. Two years later, he was made an instrument man-draftsman and in 1941 became an engineering assistant.

From 1942 to 1944, Mathis progressed from lineman fourth class to lineman second class. In 1945, he became a serviceman first class, then later that year he was named a district serviceman first class in Sulphur T&D Service.

1947 saw Mathis return to Lake Charles as a linemen first class in the T&D Line Department. In 1952, he became a line foreman. He reached his present position in 1970.

Mathis attended Lake Charles High School. He has one daughter, Ann.

After 39 years with the company, **William A. Corkern**, assistant general line foreman, Baton Rouge, retires in April.

Corkern first came to work at GSU in 1938 in the Baton Rouge Bus Company. When the bus company was sold in 1943, he was transferred to Baton Rouge Electric Service T&D. In 1947, he was made lineman first class. That same year he was transferred to the Substation Department.

In 1948, he was transferred to St. Francisville as a district foreman. Then, in 1953, he was moved to Zachary to serve in the same capacity. He was promoted to utility foreman in 1954 and transferred to Baton Rouge. The next year he became a line foreman. He gained his present position of assistant general line foreman in 1963.

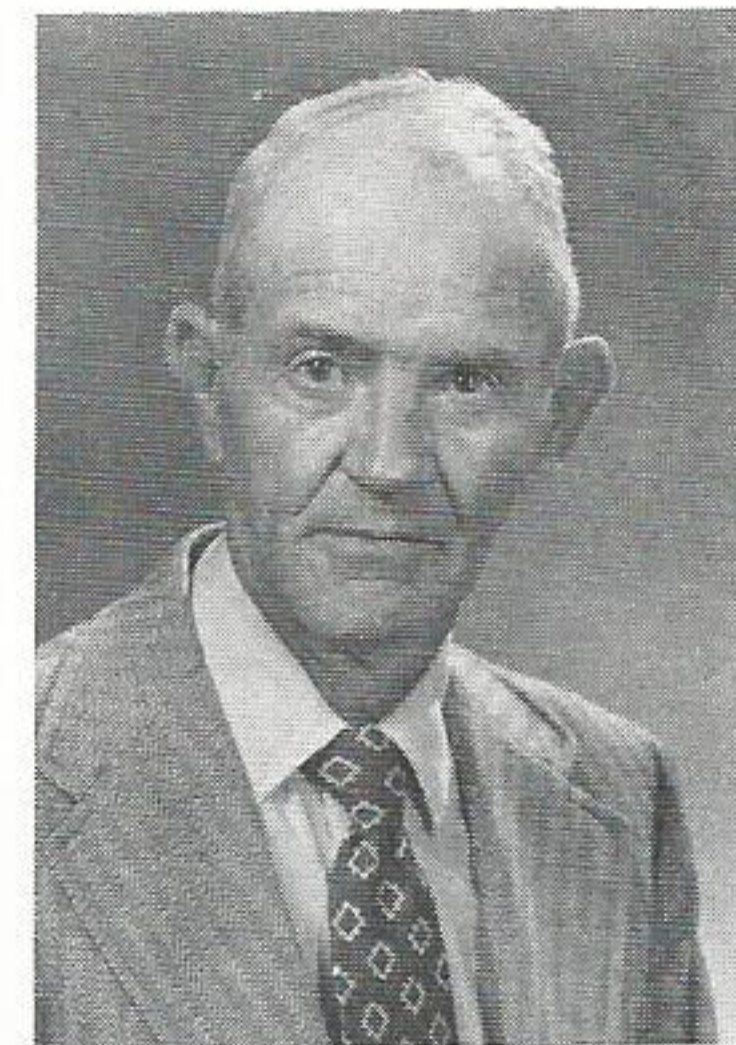
Corkern was born in Baton Rouge and attended Denham Springs High School. He and his wife, the former Theresa Smith, have two sons: William A. Corkern, Jr., and Ivan B. Corkern. They attend Lanier Baptist Church in Baton Rouge.

**Geraldine L. Wykoff**, maid-Systems Operations/building and grounds-Beaumont, retires in April after 32 years of service to the company.

She began working for GSU in 1945 as a maid in division sales, Home Services, Beaumont. In 1974 she became a maid in T&D, building and grounds, Beaumont. Three years after that, she was named to her present position.

A native of Lake Charles, Wykoff graduated from Beaumont's Charlton Pollard High School. She has one son, Charles Edward Verdun, who is married and works at the Goodyear Chemical Plant in Beaumont.

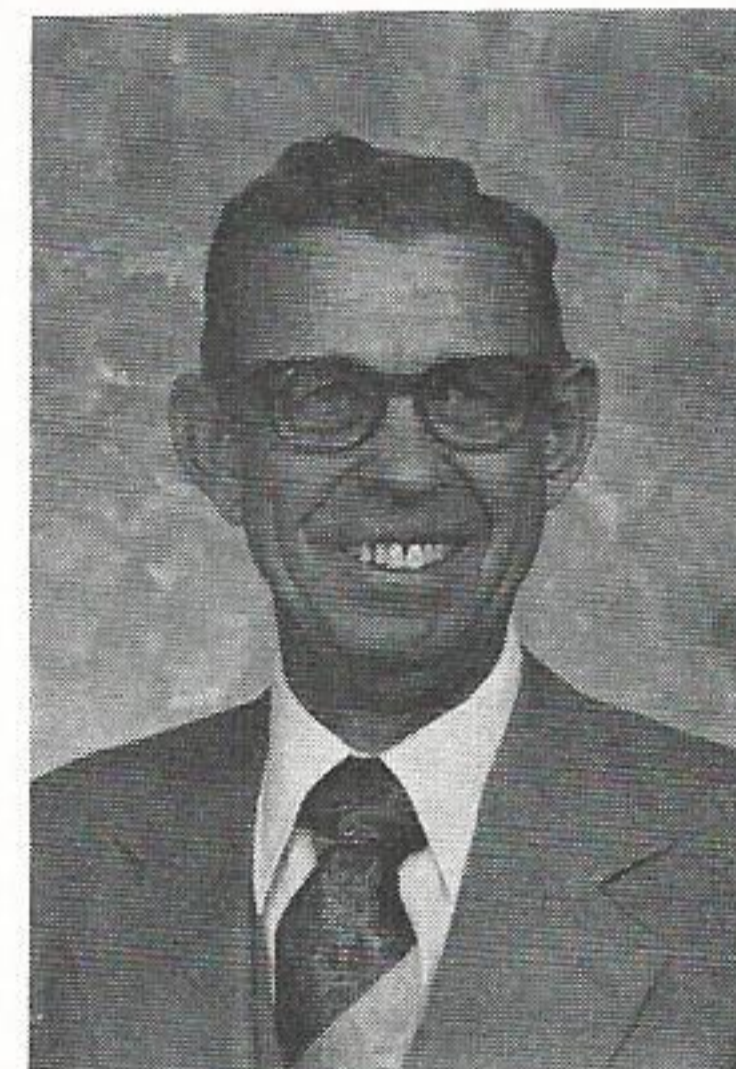
Wykoff is active in the Antioch Baptist Church of Beaumont.



Allen



Bell



Corkern



Wykoff

# COFFEE CUP



**SURPRISE SURPRISE**—Linda and Ricks Bryant were very much surprised, at first, to learn they were about to have another child to go along with their two other daughters, Shelly and Donna. But pretty Kit Denea didn't worry about that. She came along on schedule Sept. 23, at six pounds 12 and a half ounces. And she looks pretty happy about the whole thing.

## Reporters

When you have any news or a story you think would be interesting to other Gulf Staters, contact the reporter nearest to you, or write or call the **PLAIN TALKS** editor, Pat McMeel, in Beaumont. Notify **PLAIN TALKS** reporters of any event that is happening in your area that the magazine should cover. A complete list of reporters and their locations is given below. If any persons named are no longer active reporters, please contact Pat McMeel. Persons wishing to become **PLAIN TALKS** reporters should also contact the editor. We can never have too many reporters.

**BATON ROUGE:** Margie Force (T&D); T. Boone Chaney (T&D), Melanie Hima (T&D), Jack Gautreaux (T&D), James W. Bello (T&D), GERALYN WILLIAMS (Gas) Glenda Boyd (Acct.), Mary Smith, Robert Graves (Storeroom), Susan Wilks, Debbie Lynn (Engr.), Linda Nelson (Meter), Rhonda Cheek (Govt. St.)

**BEAUMONT:** Bill Toups (S.C.), Carolyn Motl (T&D), Ann Ogden, Edy Mathews, Dorothy Nowell, Carolyn Thaggard, Gene Russell.

**CALVERT:** Betty Dowell.

**CLEVELAND:** Edd Mitchell.

**CONROE:** Frances Elliot, Marilyn Key, Pat Jones.

**DENHAM SPRINGS:** Lenelle Juban.

**GONZALES:** Billie Fortenberry.

**HUNTSVILLE:** Karen Morley.

**JENNINGS:** Earl Mayfield.

**LAFAYETTE:** Mona Burris.

**LAKE CHARLES:** Billie Belvin (Garage), Edith Patterson (T&D), Janet Followay.

**LA. STATION:** Marilyn Nicholson.

**LEWIS CREEK:** D. W. Rutherford.

**MADISONVILLE:** Jean Tinsley.

**NAVASOTA:** Betty Dickschat.

**NECHES STATION:** Terry Bond, Ed Foster.

**NELSON STATION:** Martha Caldwell.

**NEW CANEY:** Diana Winkelmann, Paul Mosley.

**ORANGE:** Doris Womack.

**PORT ALLEN:** Adele Vavasseur.

**PORT ARTHUR:** Sue Williams, Lorraine Dunham (S.C.)

**SABINE STATION:** Darlene Faires, Fred Kressman.

**SOMERVILLE:** Mary Brock.

**SULPHUR:** Pearl Burnett.

**WILLOW GLEN:** Dora Landaiche, James Veatch.

**WOODVILLE:** Alene Cole.

**ZACHARY:** Myra Ponthier.



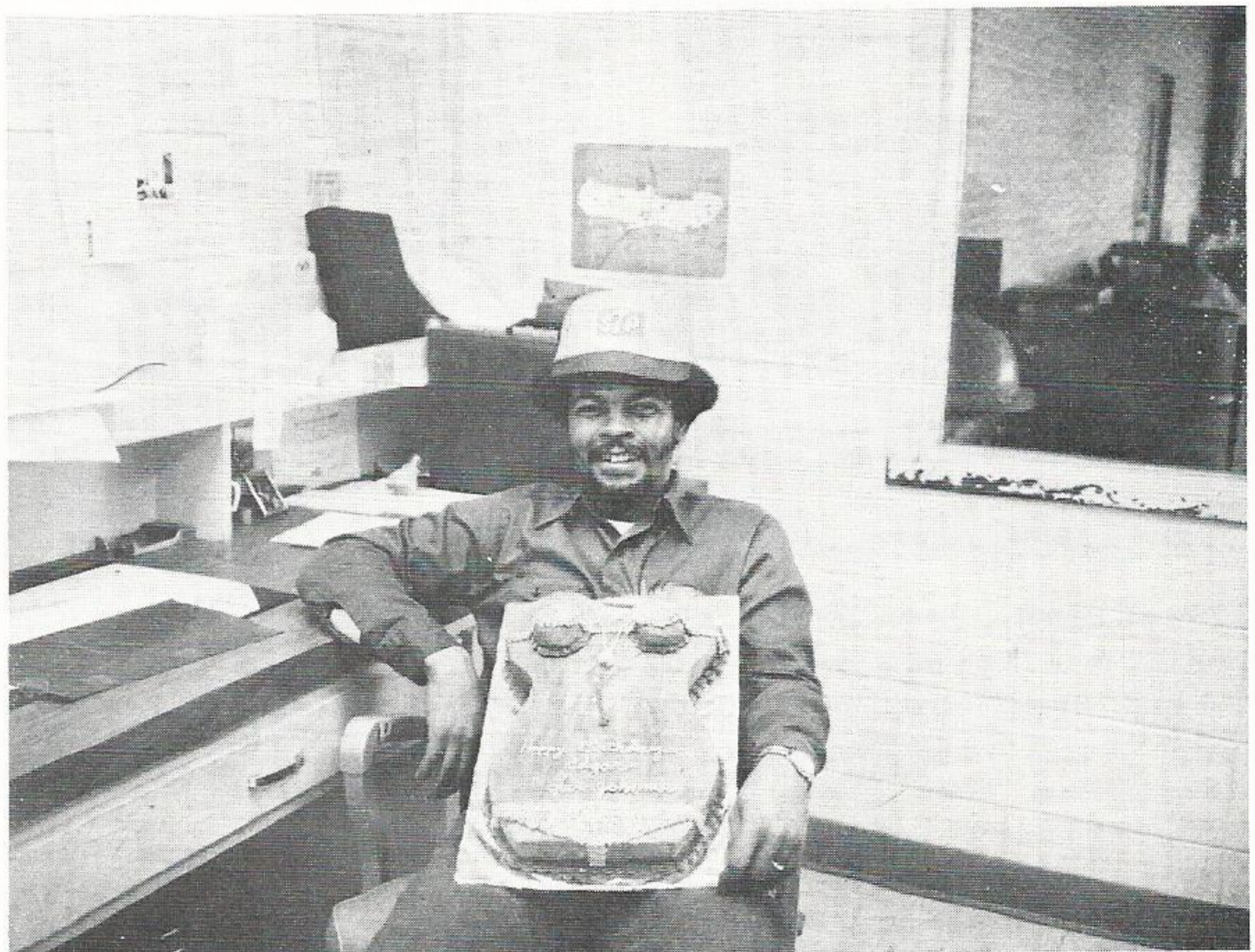
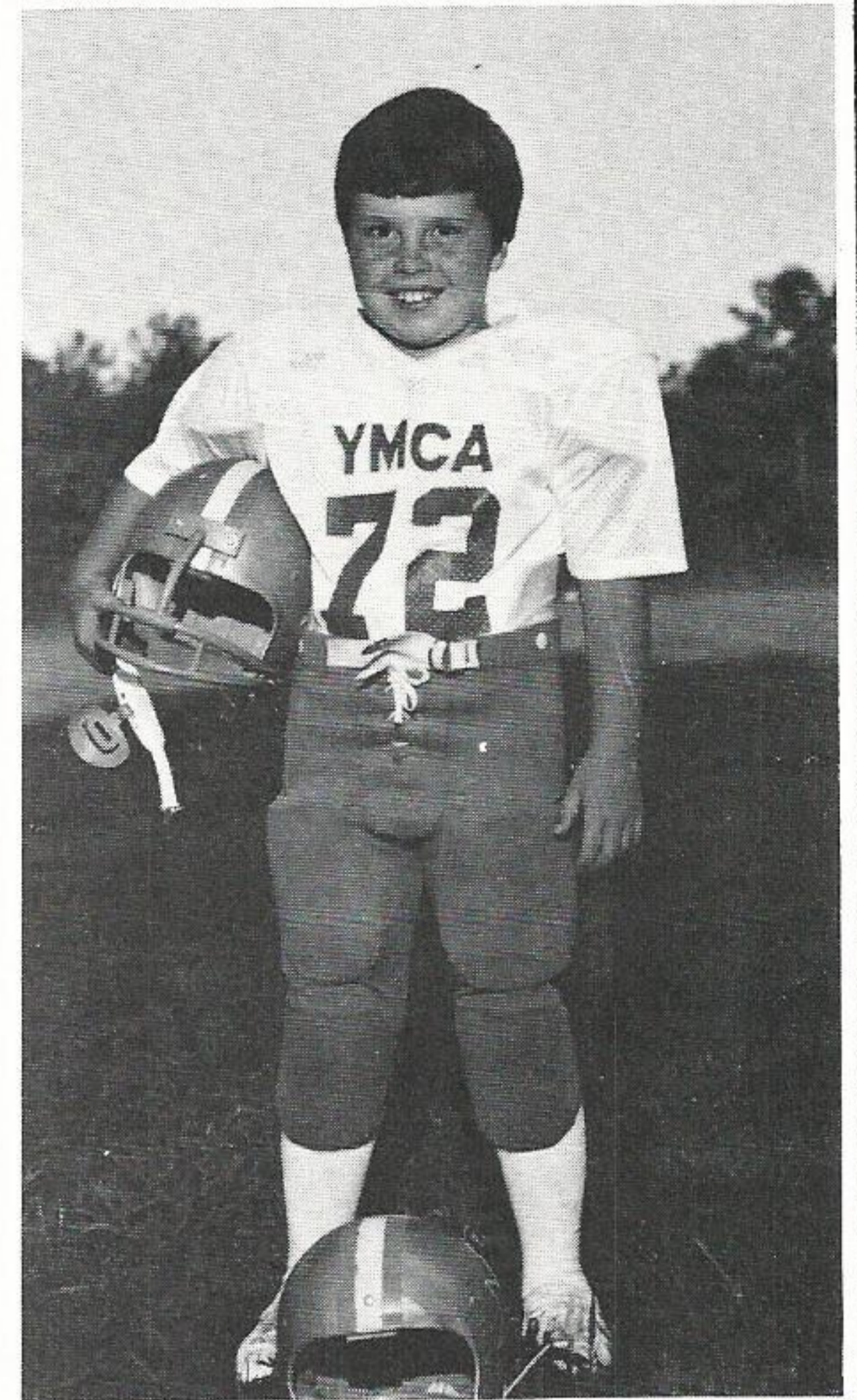
**ANOTHER YEAR**—Ross Reed, superintendent at New Caney, was given a surprise birthday party by his friends and co-workers in the Western Division office. Dianna Winkelmann baked this beautiful cake for the event, but it didn't last long. (Paul Mosley)



**PROUD GRANDPA**—This is young Christopher Allen Buxton, five month old grandson of George Hickman, senior engineering assistant-Beaumont S.C. Christopher is the son of Cindy and Donald Buxton of Deweyville, and is the first grandchild for George. (From Carolyn Motl)

## Look Out Too Tall!

**LOOK OUT "TOO TALL"**—Ed Jones, All-Pro defensive tackle for the Dallas Cowboys, might some day look up during a practice session and see this youngster trying out for his job. This is eight-year-old Scott Jeffcote, son of Joel Jeffcote, supervisor-Customer Accounts in Conroe. Scott's YMCA football team won the championship of the 7-8 year-old group this past season, and young Scott was one of the reasons why. (from Marilyn Key)



**SOME CAKE!!** — Edgar Fenner, lineman in the Western Division, has a wife who really appreciates him. On his birthday, and unknown to him, wife Johnnie baked this unusual cake and got together with his friends at work to provide a party. Edgar still can't believe it.

# COFFEE CUP

## A Proud Father . . . . .



**HOMECOMING COURT**—Pretty Karen Comeaux, a 10th grader at Glen Oaks High School in Baton Rouge, was elected to the Homecoming Court this past season. She is being escorted by her father, Kenneth Comeaux, a lineman first class in Baton Rouge T&D. (from Myra Pontier) (photo by Tommy Ford)



**OFF TO SCHOOL**—Pearl Burnett, local office clerk in Sulphur, is off to school again. She will attend the University of Southwestern Louisiana in Lafayette. Pearl was "GSU" to most customers in Sulphur and she will be missed. Her co-workers were on hand to wish her well as a freshman at USL. (from Gene Mullin)



**TENDERLY**—W. A. Jones, utility foreman in Navasota, tenderly holds one of the best christmas presents he could have gotten, a healthy and beautiful granddaughter. Amanda Jo Nobles was born Dec. 7. She is his first grandchild. (from Betty Dickschat)

## A Top Model At 11 Years

**FUTURE COVER GIRL**—Some day the face of Lisa Dawn Dupuy could well grace the covers of publications of fashion magazines the nation over. She is the 11-year old daughter of Gerald E. Dupuy, control operations foreman at Willow Glen Station, and she is already an accomplished model. A sixth grader at Conn Middle School in Port Allen, Lisa has completed the exercises in the Modeling Clinic sponsored by a fashion botique, and has performed in three fashion shows in the Baton Rouge area. (from Dora Landaiche)

**Lisa Dawn Dupuy**



---

## Editorial Comment

### Notable & Quotable

*John Moore, member of the British Parliament, in an article in the London Daily Telegraph on the relative merits of nationalized and private industries:*

Our nationalized electricity industry (excluding Scotland) is generally agreed to be one of the best of our nationalized Industries. I have compared it with the free-enterprise electricity industry of California, New York and Pennsylvania. These three states have a combined population of about 50 million, roughly the same as the U.K. without Scotland . . .

In the U.K., the electricity industry has 172,483 employes. In these three states, serving the same number of people: 73,046 employes. In the U.K. the 172,000 people produce approximately, in thousands, 211,000 kilowatt hours of electricity. In the three states: 268,000. Nearly two-and-a-half times the number of people in our nationalized electricity industry produce 27% less electricity.

Then one can compare taxes paid to the community against losses charged to the community. From 1970 to 1975 there were revenue losses in the U.K. electric industry of 511 million pounds, and subsidies paid of 526 million pounds. In those same five years in the U.S. the private enterprise electric industry paid taxes — paid in to the community — of 300 million pounds.

*The Wall Street Journal  
Thursday, January 19, 1978*

Bulk Rate  
**U. S. POSTAGE PAID**  
 Beaumont, Texas  
 Permit No. 11

# How To Make

## FAVORITE RECIPES OF MEN

### AUBREY'S YEAST BREAD

- |                          |                           |
|--------------------------|---------------------------|
| 2 pkgs. active dry yeast | ¾ cup cooking oil         |
| 3 cups warm water        | ¾ cup sugar               |
| 2 eggs, beaten           | 1 Tbsp. salt              |
|                          | 8 to 10 cups sifted flour |

Dissolve yeast in 1 cup warm water for 10 minutes. In large bowl of electric mixer combine remaining water, eggs, oil, sugar, salt and yeast using medium speed. Add flour to make a stiff dough. As dough becomes difficult to manage with beaters, continue adding flour using a large wooden spoon. Turn out onto lightly floured board. Knead 15 minutes. Place in a lightly greased bowl; cover and let rise in a warm place until double in bulk, approximately 1½ hours. Punch down. Let rise again until double. Divide dough into 3 equal portions and shape into loaves. Place in greased 9 x 5 x 3 inch pans. Let rise until double. Bake at 350 degrees 50 minutes.

### JOHN'S CRAWFISH ETOUFFE

- |  |                               |
|--|-------------------------------|
| ½ cup chopped celery                   | 2 lbs. cleaned crawfish tails |
| 1 cup chopped onions                   | 2 Tbsps. crawfish fat         |
| ½ cup chopped green pepper             | 2 cups cold water             |
| 1 clove garlic, diced                  | 2 Tbsps. cornstarch           |
| ½ cup butter, margarine or cooking oil | ¼ cup onion tops              |
|  | 1 Tbsp. chopped parsley       |

Saute celery, onion, green pepper and garlic in butter. Add crawfish tails, crawfish fat and 1½ cups water. Bring to a boil and cook over low heat 30 minutes. Dissolve cornstarch in ½ cup water and add to mixture. Add onion tops and parsley. Cook another 10 minutes. Serve hot.

### PAUL'S PECAN PIE

- |                                     |                                   |
|-------------------------------------|-----------------------------------|
| <u>For 9 Inch Pie:</u>              | <u>For 8 Inch Pie:</u>            |
| 3 eggs                              | 2 eggs                            |
| 2/3 cup sugar                       | ½ cup sugar                       |
| ½ tsp. salt                         | ¼ tsp. salt                       |
| 1/3 cup butter or margarine, melted | ¼ cup butter or margarine, melted |
| 1 cup light or dark corn syrup      | ¾ cup light or dark corn syrup    |
| 1 tsp. vanilla                      | ½ tsp. vanilla                    |
| 1 cup pecan halves                  | ¾ cup pecan halves                |
| Unbaked 9 inch pie shell            | Unbaked 8 inch pie shell          |

Beat eggs slightly and add sugar, salt, butter, corn syrup and vanilla. Mix thoroughly. Stir in pecan halves. Pour into pie shell and bake at 375 degrees 40 to 50 minutes, or until filling is set and pastry nicely browned.

AFTER FIVE DAYS RETURN TO

# PLAIN TALKS

P. O. BOX 2951  
 BEAUMONT, TEXAS

RETURN POSTAGE GUARANTEED

HOME SERVICE DEPARTMENT

GULF STATES UTILITIES COMPANY

