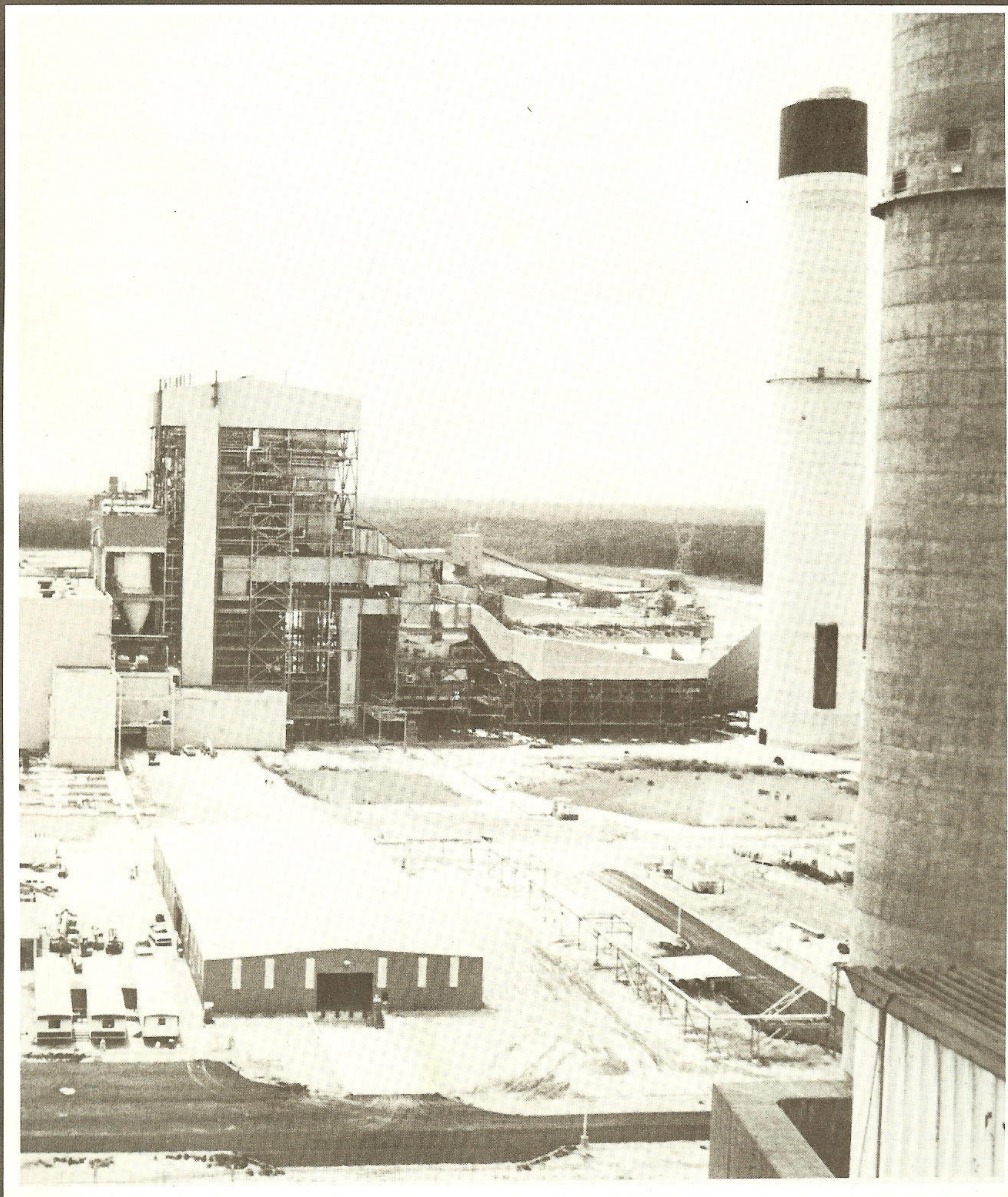


PLAIN TALKS

May/June 1982



MAIL BOX

THE COVER

Nelson 6, GSU's first coal-fired generating plant, is able to cleanly and safely generate 540 megawatts of power. The unit will save in fuel costs as it replaces natural gas that grows increasingly expensive.

Hugh Sanders, supervisor of contract crews at Nelson Station, is one of the GSU employees who has watched the new coal plant go up. Sanders, a photo enthusiast, took the shot of Nelson 6 shown on the cover. A platform on Nelson 4 affords a good overview of the new coal unit, as Sanders' picture shows.

Dr. E. Linn Draper Jr.
Gulf States Utilities
Beaumont, Texas
Dear Dr. Draper:

I appreciate the time you took to address the Orange Lions Club. Your statements were very factual and informative. It is good for the public to hear industry's story. Our club members expressed their appreciation of your speech. In fact, I received a call after I got home, telling me we would have 100 percent attendance at all our meetings if we could get outstanding programs such as you gave us.

Again, I want to thank you and Jim Stelly for your contributions.
Sincerely,
Otho H. Haunschild

Shivaun M. Tessier
Gulf States Utilities
St. Francisville, La.
Dear Ms. Tessier:

On behalf of the vocational teachers of the Port Arthur Independent School District, I want to thank you for the excellent tour of the River Bend facility. Our staff members have expressed to me that they now

have a better understanding of the generation of electricity. They were also impressed with the safety precautions taken in the design of the facility.

Thanks again for your hosting us.

Sincerely,
Guy R. Jones, Ph.D.
Director of Career Education

Sandra Conn
Gulf States Utilities
Beaumont, Texas
Dear Ms. Conn:

When one of my students does an outstanding job, she receives an A. Here is your A!

We certainly enjoyed our tour yesterday of the Office Services Department. Our students were able to relate to the materials they have been reading by seeing this equipment in operation. Field trips such as this one greatly enhance our students' total education program. Again, thank you very much.

Sincerely,
Betty Johnson
Assistant Professor,
Lamar University

(EDITOR'S NOTE: The following letter was written by Russell Frith, system-wide grand prize winner in the company's recent essay contest. He received U.S. savings bonds worth \$50, \$200 and \$500 in the competition.)

Lydia Brown
Gulf States Utilities
Baton Rouge, La.
Dear Ms. Brown:

I would like to thank you and your company for the savings bonds that were awarded to me for participation in the company's essay contest. Gulf States Utilities has once again performed an outstanding public service through its sponsorship of the essay contest. I am very proud to be served by Gulf States. Again, many thanks.

Sincerely,
Russell Frith
10722 Rondo Ave.
Baton Rouge, La.

PLAIN TALKS

Volume 63 Number 4
May/June 1982

Published monthly for employees and annuitants of Gulf States Utilities Company. Produced within the Public Affairs Department, Fred C. Repper, vice president, by the Communications Department, Henry Joyner, manager. Address all communications to Editor, PLAIN TALKS, Gulf States Utilities Company, P.O. Box 2951, Beaumont, Texas 77704, Phone (713) 838-6631.

Director-Employee Information/Media Services

Kim McMurray
Editor

Susan Huff Gilley

Correspondents:

Adelaide Bankston

Barbara Broussard

Myra Castello

Kathleen Chelette

Connie Herford

Fred Jones

Les Jones

Helen Kennedy

Earl Landry

Edith Patterson

Casey Richert

D. W. Rutherford

Opal Temple

David Thornhill

Doris Wallace

Nina Wiley

W. S. Young

Employees who change residences or offices should fill out company mailing-address-change forms (GSU0012-00-79) and return them to the mailroom in the Edison Plaza. GSU publications, departmental mailings and other company information are not automatically forwarded; addresses must be corrected when employees move.

CONTENTS

PLAIN TALKS

Features

5 Nelson 7: GSU's Sleek New Peaking Unit. The gas-turbine is being completed at Nelson Station.

6 GSU Moves into a New Coal Energy Era. Nelson 6 is operating, and hundreds of people have gotten a first-hand look at the coal-handling facilities and generating unit.

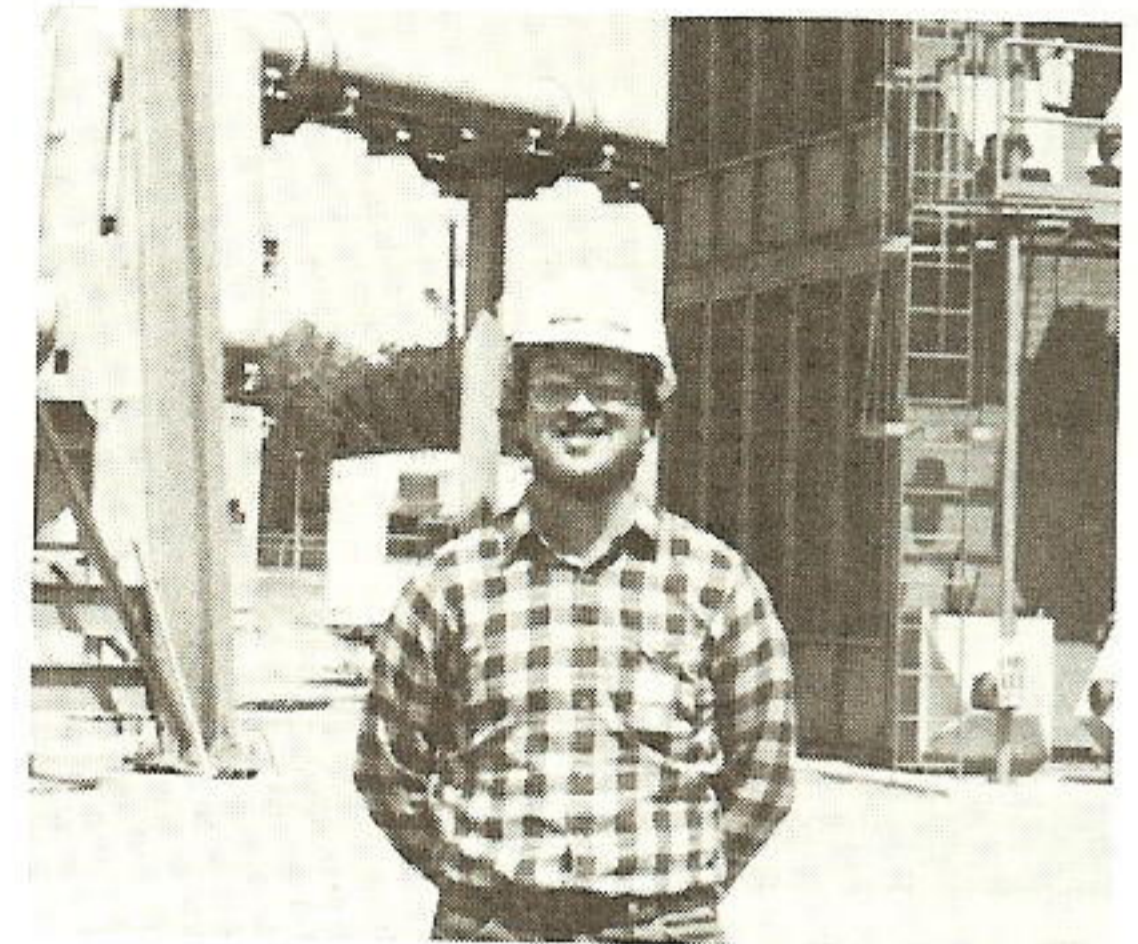
8 It's Official . . . Edison Plaza Formally Inaugurated. Employees, retirees, family members and shareholders helped dedicate the new building.

10 Baker Pioneers Energy Conservation Commission. The City of Baker, La., has initiated some positive conservation action, with the help of GSU and Dixie Electric.

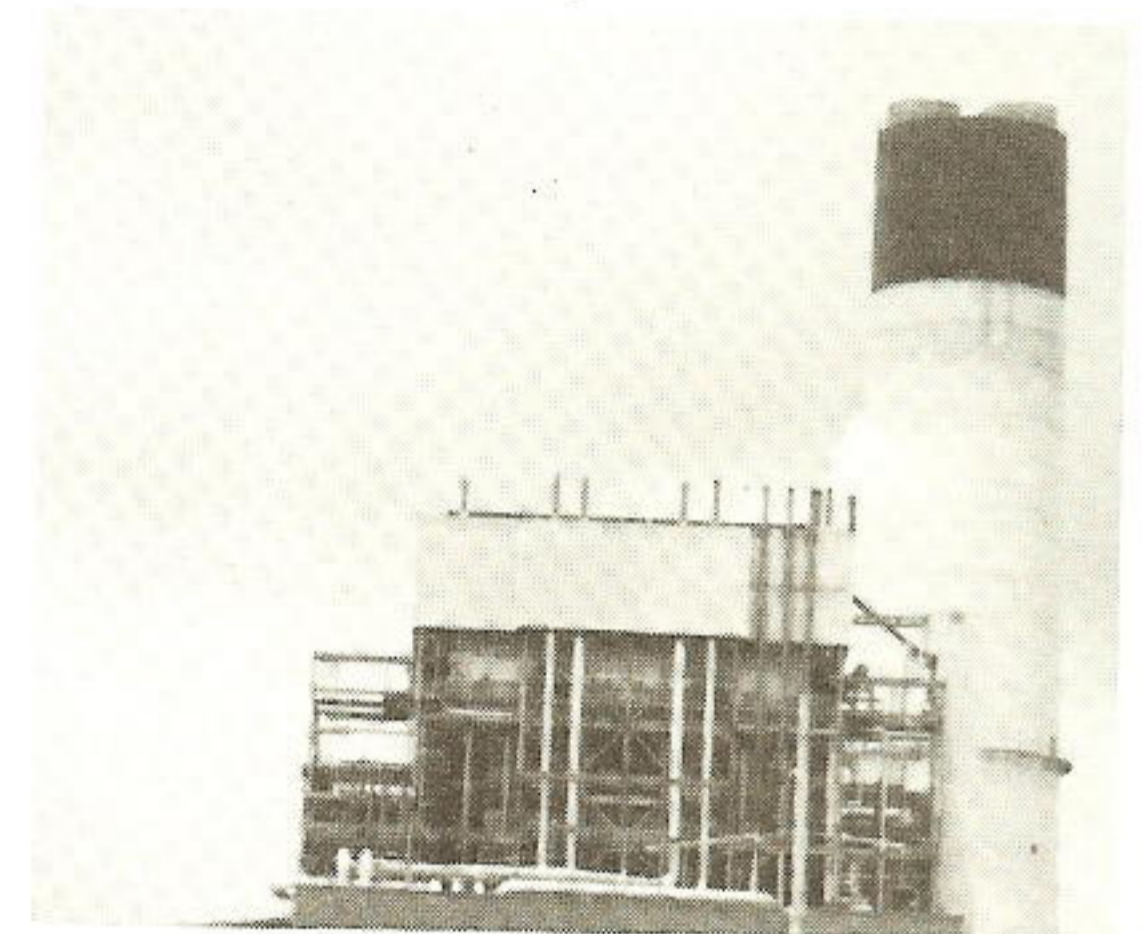
14 Service Award Banquets. A four-page picture feature shows employees who were recently honored for long-term service.

Departments

- 4** News Briefs — concise reports of company events
- 11** Inside GSU — items of interest to employees
- 12** Service Awards — recognition of employees
- 13** Retiree Update — news from retiree clubs in each division
- 19** Comments — Nelson 6 Is a Step Toward Energy Security



5



6



8



14

NEWS BRIEFS



Two earn lifesaving awards

In an unusual, dual ceremony, GSU President Norman Lee presented two Lifesaving Awards May 19 to Bert Rogers, pictured at left with his wife Sandra, and Bill Weatherford, right with his wife Wanda and their son Lane.

Lee, foreground in photo, said Rogers and Weatherford saved the life of a man Jan. 26 when he collapsed at a Nederland Lion's Club meeting. The two saved the man a second time, once again by administering heart massage and mouth-to-mouth resuscitation, when he was again stricken with heart problems during another Lion's Club function in February.



Operators observe 1st coal firing

On March 20, the operators of Nelson 6 celebrated the first coal firing of the unit.

Plant Superintendent Jim Hurley and his wife, Debbie, provided the cake and soft drinks for the occasion. According to *Plain Talks* correspondent Myra Castello, the cake was decorated

to resemble a burning piece of coal.

In the photograph, Hurley (center) is flanked by Dan Feasel (left), shift supervisor, and Richard Harrell, control operator.

Clerk trains in Los Angeles



Lydia Mitchell, a department clerk at Willow Glen Station, recently attended a training course at the IBM Advanced Education Center in Los Angeles. Those taking the course learned about installation and operation procedures of an office support facility system.

Lydia is a four-year employee of Gulf States.

Eighteen undergo safety training

Eighteen Nelson Coal employees have been certified by the state of Louisiana as "First Responders."

They were given the title after completing a week-long, highly advanced first aid training course. The certification qualifies them to act as members of the Nelson Coal Trauma Team, whose members help sustain life for accident victims until professional help arrives.

The program is a first for Gulf States' Production Department, said *Plain Talks* correspondent Myra Castello. If successful, it will be implemented at other power plants.

Plans call for having a few members of the Trauma Team on

each shift. Each member will wear a hard hat marked with a blue stripe and safety sticker. Al Levine, safety director, said he plans to hold monthly refresher meetings for the team.

Those certified were Bo Holtzclaw, Owens McPayne, David Brawner, Randy Welch, Bob Boulton, Tom Senter, Tim Parker, Tom McDiermon, Bob Spittler, Louis Juneau, Gerald Ward, Hugh McMillin, Dan Downs, Shelly Travis, Alan Dougherty, Dan Feasel, Susan Buford and Glenn Dixon.



Because of various shift assignments, only eight members of the group were on hand the day certificates were issued. They are, from left, McPayne, Juneau, Travis, Dougherty, McMillin, Downs, Welch and Dixon.

Solar project announced

Gulf States has announced it will be offering residential solar water heaters for sale within a 20-mile radius of Beaumont. The purpose of the demonstration project is to determine if there is a real market for these systems and to test customer acceptance.

The system is manufactured by a Waco firm and will be installed and maintained by a local contractor. The project is limited to 150 solar water heating systems.

For more information, contact John Tarver in Consumer Services, Edison Plaza, 733-2038.

Nelson 7: GSU's Sleek New Peaking Unit

by Ilene Harral

Summertime. And every air conditioner in GSU's territory is going full force. If a couple of generating units are off line for maintenance or repairs, the climbing peak can cause Power Supply to sweat out a possible shortage. On certain days, even 50 megawatts could conceivably make a difference to a 6,000-megawatt system.

Clean, neat and small, the Nelson 7 combustion turbine is a peaking unit which will be standing ready for just such times — when Gulf States needs extra power. It's designed to produce 90 mw, but it has already proven it can produce 107 mw.

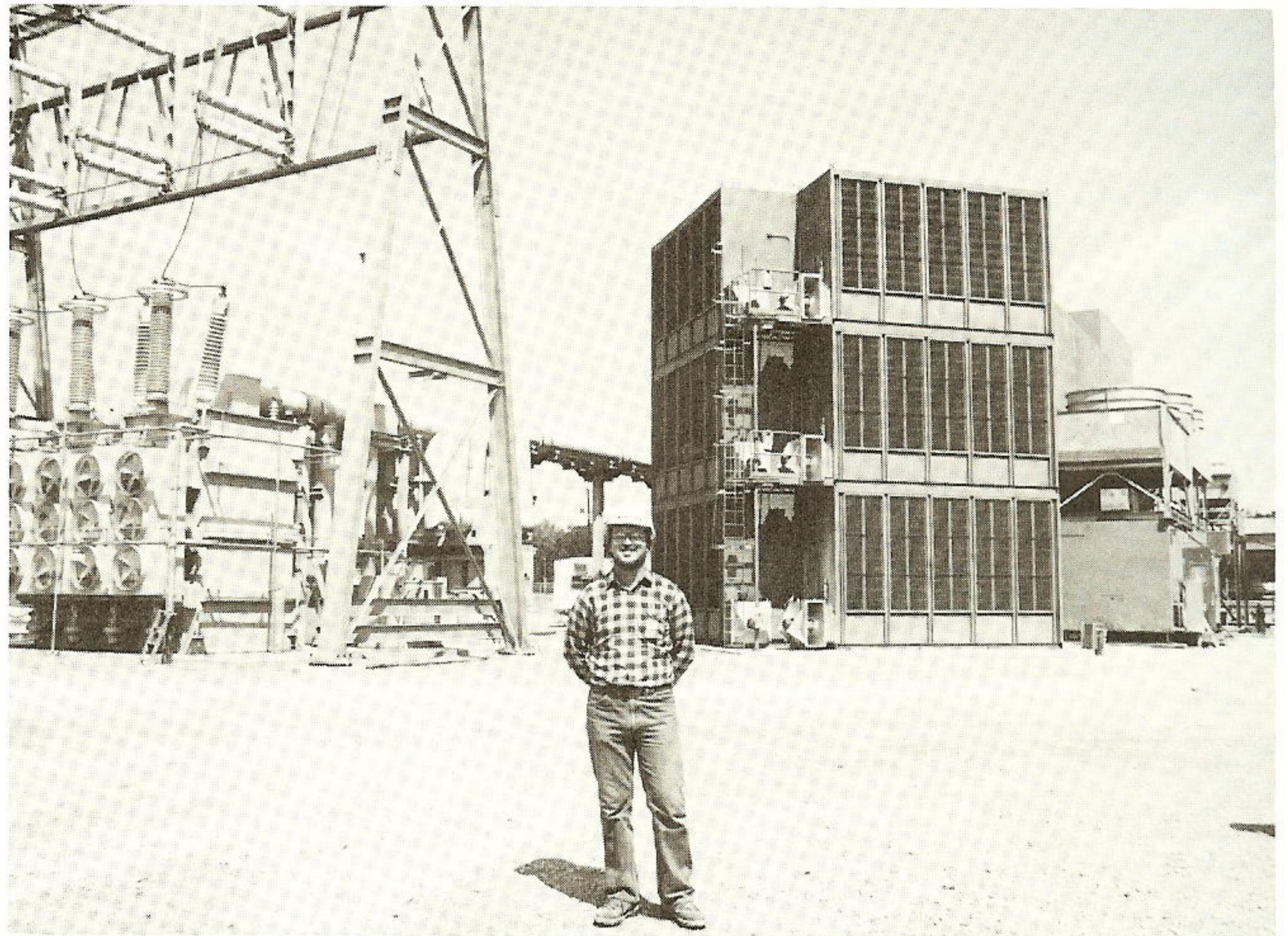
While Nelson 7 was undergoing pre-operational tests, a turbine blade failed. Damage to other blades was significant, and the unit went into an inspection and reconstruction phase. The cause of the failure has been determined, and once repairs are completed, the plant is expected to function well.

Located at Nelson Station in Westlake, La., the quick-starting unit is the largest combustion turbine — by about 20 mw — ever installed in the United States.

"Most units like this have been about 25 megawatts," said Construction Superintendent Dick Gibson. "We didn't have the technology before, to build a unit this size."

Because of federal regulations governing use of natural gas in new plants, Nelson 7 cannot be used more than 1,500 hours a year at full load.

GSU can schedule those hours anytime it wants, but the unit's main purpose is to help out during power crises. The jet-engine-like Westinghouse generator will be kept ready to go at all times. It



Terry Easterwood, plant services engineer, stands in front of Nelson 7, GSU's gas-turbine peaking unit in Westlake, La.

can be fired up in 20-30 minutes, ideal for peak-demand days.

A small control room next to the plant can be manned, but it isn't necessary. Nelson 7 can be started up or shut down and the load changed from a small remote-control unit located in the control room of nearby Nelson 3.

The commands for use of the peaking unit will come from Beaumont-based system operators in power supply.

Nelson 7 not only will respond quickly to orders, it was also built rapidly and smoothly. One reason the peaking unit went up so quickly after last summer's groundbreaking is that it is a modular unit with components brought in by rail and truck and put together at the site.

Work involving many GSU departments in Beaumont, Lake Charles and Westlake also helped get the unit together quickly, Gibson explains. "It was a project management or team approach involving widespread support

of GSU groups. Without that support, we could not have achieved our objective — to build Nelson 7 on time."

GSU Moves into a

by Sharon Englade

'Fuel for the boilers of Nelson 6 is mined on a working cattle ranch in northeast Wyoming and travels more than 1,500 miles by rail to the power plant in Westlake.'

Gulf States Utilities' first coal-fired power plant, Nelson 6, was formally dedicated in early June, with dignitaries from throughout the state of Louisiana participating in the ceremony.

The weekend before the June 8 dedication, about 1,000 GSU employees and retirees and their families toured the plant, getting a first-hand look at the coal-handling facilities and the generating unit.

The 540-megawatt plant is a joint venture of Gulf States and two affiliates of Sam Rayburn Dam Electric Cooperative. Sam Rayburn Municipal Power Agency and Sam Rayburn G&T Inc., collectively, have a 30 percent interest in the unit.

Fuel for the boilers of Nelson 6 is mined on a working cattle ranch in northeast Wyoming and travels more than 1,500 miles by rail to the power plant in Westlake.

Kerr-McGee Coal Corp., which has contracted to supply 50 million tons of low-sulfur western coal to GSU over about a 25-year period, bought the Jacobs Ranch in 1973 and has federal coal leases on about 4,000 acres of the property. Kerr-McGee, however, keeps only 500 acres in coal production at any one time so the area outside the immediate mining location can still be used as rangeland for some 300 head of Angus and Angus-Hereford cattle that roam the property.

The mining operation doesn't

bother the cattle that frequently push right up to the fences separating the two businesses, apparently curious about the men and machinery at work, the ranch manager said.

Once an area is mined, the land is turned back into a prairie where the cattle can once again forage for food. Topsoil and overburden — the earth material overlying the coal deposit — are trucked back to fill in the mined-out portion of the pit and the land is contoured to blend in with the natural terrain.

The recycled land is seeded with native grasses and ranch employees believe the restoration should double the livestock production because the cactus and sagebrush that once flourished there are replaced with grasses better suited to the cattle.

Jacobs Ranch got its beginnings in the 1920s when a young schoolteacher, J. A. "Gus" Jacobs, came to visit an uncle in Gillette, Wyo., and decided to remain. He began acquiring land and eventually switched from teaching to ranching.

Jacobs knew the land was rich with coal because he and his neighbors blasted it out of the ground and used it to keep their families warm through the long, cold Wyoming winters.

Today, the coal from Jacobs Ranch is mined with modern equipment and burned in GSU's highly efficient Nelson 6 boilers where electrostatic precipitators

collect 99.5 percent of the fly ash and dust.

One of the key attractions at Nelson 6 is the rotary car dumper situated over the railroad tracks that circle the site. When the plant operates at capacity, a 110-car train arrives every other day carrying about 11,000 tons of coal. As a train arrives it is positioned at the rotary car dumper building and is mechanically moved through the dumper system where each car is independently rotated and its contents spilled into a giant hopper under the building.

The control operator then transfers the coal either to the active storage building, capable of holding a three-day supply of coal, or to an outside stockpile that holds a 60-day supply in reserve.

Enclosed conveyors used for moving the coal help protect the area from fugitive dust, and sprinkler systems installed at various locations wet down the coal to again help keep dust at a minimum.

Once the coal is moved to silos inside the plant, it drops into pulverizers where the chunks are reduced to the consistency of face powder before being blown into the boiler furnaces.

After the coal is burned, the residue becomes fly ash and bottom ash, products which can be used for road building materials and concrete.

Nelson 6 employs between 175 and 200 people, a number of whom

New Coal Energy Era

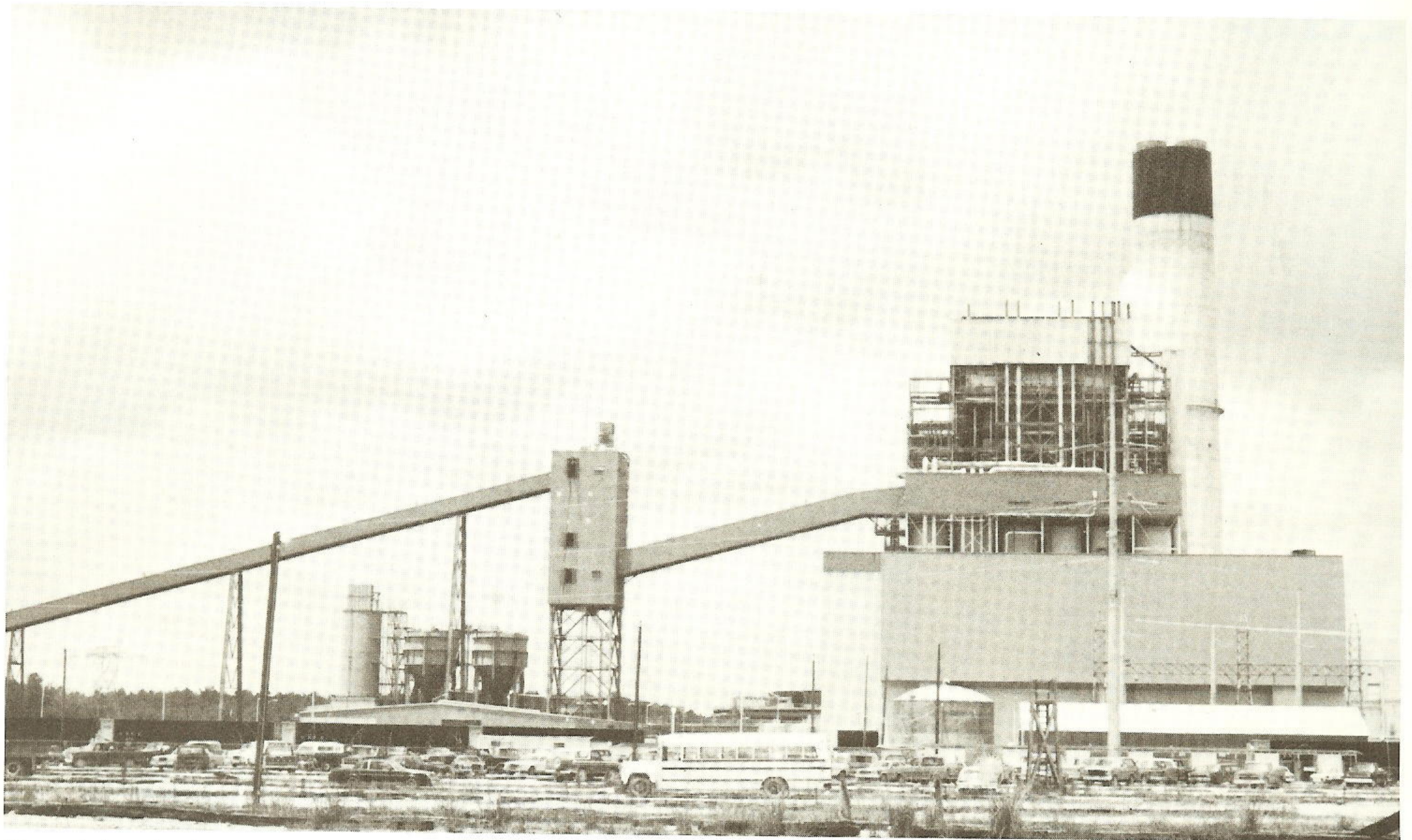


Photo by Hugh Sanders

The coal chutes lead up to Nelson 6, where the unit will consume more than 300 tons of low-sulfur western coal an hour.

are bringing a decade or more of coal-fired power plant experience with them. All the Nelson 6 people live in the Lake Charles-Westlake area.

Plant superintendent is Jim Hurley who came to GSU in May 1980 after 24 years with American Electric Power Co. in the midwest.

The fuel handling supervisor, David Simmons, spent 21 years at American Electric and 1½ years at Basin Electric Power Co-op. Nelson 6 is his ninth unit start-up.

Some of the other "coal men" are Mark Degenhardt, fuel handling foreman, 10 years with American Electric; Michael W. Kolbus, maintenance supervisor, seven years with American Electric; Gene Scheel, shift supervisor, 15 years with Ohio

Edison Co.; and Larry Hancock, a shift foreman, 11 years with Appalachian Power Co. in West Virginia.

The Nelson 6 men, machinery and technology are playing their part in moving Gulf States into coal, the new energy era.

It's Official...

Edison Plaza Formally Inaugurated

GSU's honorary chairman of the board, Don Crawford, was praised as having the "vision, wisdom, insight and determination" to bring Edison Plaza into existence as the new corporate headquarters building was dedicated May 6.

Those were the words of Dr. Paul Murrill, a former company director who became chief executive officer and chairman of the board April 1. He was one of the participants in the formal dedication ceremonies marked by the unveiling of a portrait of Thomas Alva Edison.

The 3-foot by 4-foot oil portrait, painted in 1949 by the late Philadelphia artist, Harry J. Oshiver, was uncovered by the honorary chairman's wife, Colene Crawford.

Oshiver, who died in 1974 at the age of 86, never met Edison, but, said Oshiver family members, the inventor became an obsession with the artist who spent many hours talking with people who had known Edison.

The portrait of Edison was never commissioned and was never sold. It was originally unveiled on Oct. 21, 1949, the 70th anniversary of the incandescent light bulb, and displayed in the lobby of Philadelphia Electric Co. The painting hung for several years in the boardroom until Oshiver requested its return for a private showing.

Either the artist or his survivors donated it to the Charles Edison Fund from which it is on permanent loan to the Edison Plaza Museum. The museum is scheduled to be opened this fall in the Travis Street substation, adjacent to the new headquarters building.

GSU President Norman Lee,



Paul Murrill, right, shows Don Crawford, honorary board chairman, a plaque that will be displayed in Edison Plaza Museum.

who served as master of ceremonies, reminisced about the history of the site on which Edison Plaza now stands and told the 250 in attendance, "We welcome you to our home here in Beaumont."

Murrill, who joined the GSU board in 1978, commented that Gulf States "exists to serve the consumers and the communities in our service area." He has been impressed, he said, with the dedication of employees to that goal of providing service.

Bill Phillips, president of the Central City Development Corp. which is involved with the revitalization of downtown Beaumont, welcomed Edison Plaza to the central city community. He drew

applause and laughter when he commented, "It's amazing what a two-block move can do for a city skyline."

"Don Crawford, your dream has come true with the opening of this building," Phillips said.

Jim Yarbrough, former co-chairman of the Planning and Economic Progress Committee, read a letter from ex-Mayor Maury Meyers who wrote that Edison Plaza "shines like a beacon, representing Gulf States' commitment to the future."

After the formal ceremonies, guests were taken on tours of the building, with company officers serving as tour guides.

Tours and an Annual Meeting

Employee and retiree tours that brought more than 1,500 visitors to Edison Plaza were held May 1 and 8. Then, on May 13, GSU's shareholders packed the cafeteria/auditorium in the new headquarters for the annual meeting. Following the meeting, groups were shown around the building.

GSU Board Chairman Paul Murrill told the shareholders that the challenges that lie ahead for the company are not necessarily bad.

"History teaches us that individuals can become complacent when things come too easily. But when times are hard, they often excel," he said.

GSU's financing of the River Bend nuclear unit is biggest among current challenges, Murrill pointed out. "Inflation and high interest rates have made it difficult for the company to build the unit as quickly as we would like . . . but it still will be among the most expeditiously built nuclear units in the country."

The most notable progress the company made in 1981, the CEO explained, was in construction of Nelson 6. "This unit was completed on time and tolerably close to budget, quite an achievement in today's economic climate."

GSU's second coal venture, a 42 percent interest in Big Cajun 2, Unit 3, near New Roads, La., also is progressing well and is due for completion in 1983, Murrill said.

He outlined the company's plans to continue strengthening conservation programs, as fuel costs continue to rise and rates increase. "Nothing is being ruled out. Special rates, load management, alternative energy systems and assistance for those unable to pay their utility bills. There is a genuine concern within the

company for our customers, and this will become even more obvious as electricity costs continue to increase."

The company must have "prompt and substantial rate relief," Murrill pointed out, or GSU's earnings for 1982 will be less than the 1981 level.

Gulf States is reducing expenditures internally as much as possible without affecting customer service, he said. "All budgets are being carefully monitored, and we are constantly looking for the most cost-efficient ways to do business."

During the annual meeting,

Murrill unveiled a plaque featuring an engraved likeness of Crawford. It will hang in the Edison Plaza Museum, which was incorporated under Crawford's guidance. The museum is scheduled to open this fall.

The GSU Board of Directors also honored Crawford at their May 12 meeting when they adopted a resolution in "appreciation for the valuable services rendered" by the honorary board chairman.

Crawford attended the board meeting, shareholders' meeting and the formal dedication ceremony on May 6.



Taking a look around the 17th-floor executive offices are T. J. Swilley, left, and her sister Karen, both cousins of Iris Stanfield, secretarial specialist on the 17th floor, shown third from left with her mother, Flora Seaman. Also shown are Warren Russell and Mike Russell, husband and son of Maxine Russell, executive administrative secretary.



Wayne Goff, serviceman in the Silsbee office, and his wife Patsy brought their three daughters, Lisa, left, Christy, right, and Carrie, center and 5 weeks old that day, to tour Edison Plaza on May 8.

Baker Pioneers Energy Conservation Commission

by Susan Gilley

Jim Hill, Baker City Council president, believes in doing something positive when confronted with an unsatisfactory situation.

And that's just what the businessman/politician did in early 1981 when Baker city officials realized that rising gas rates could burden unprepared city residents.

He formed the Baker Energy Conservation Commission, a seven-member panel dedicated to educating the community about energy conservation. Among the commissioners are Harriet Babin, supervisor of consumer information services for GSU's Baton Rouge Division, and Turk Tynes of Dixie Electric. The commission frequently utilizes the expertise of Gulf States, Dixie Electric and Louisiana Department of Natural Resources personnel to get across energy messages.

"A lot of people see a utility company as a big, unfeeling monster. Now, they have a chance to see them in a different light," Hill commented recently.

Hill said the city owns its gas utility system and, "Our own rates have increased by 400 percent in the last five years." He also said Dixie serves about one-third of the electric customers and GSU the other two-thirds.

The Baker commission was given the Governor's Award for Excellence in Energy Conservation in January. By late February 1982, Hill was pleased enough with the commission, which he chairs, to suggest to GSU's Summa Stelly, vice president of Louisiana operations, that "Together, we can make a difference."

One of the first efforts to make that difference took place last summer when the commission

declared June 28-July 4 as Energy Conservation Week. Gulf States contributed a comprehensive display, still standing in city hall, accompanied by literature on topics as varied as retrofitting homes, van pooling and the wise use of energy.

During the week, more than 2,000 litter bags containing literature with more energy-saving ideas and home improvement tips were attached to the doors of Baker residences. GSU, Dixie Electric and the Louisiana Cooperative Extension Service provided the literature. Energy-related businesses operating in Baker participated on the final day of the week by displaying their wares, including ceiling fans and insulation, in booths set up near city hall.

'A lot of people see the utility company as a big unfeeling monster. Now, they have a chance to see them in a different light.'

Ongoing education efforts by the commission include a regular energy conservation column in the city's weekly newspaper, The Baker Observer. Mike Sattler, general manager of the paper, is also a panelist. In one issue, Sattler's paper featured a detailed account of both GSU's and Dixie's audit procedures after both companies conducted comprehensive audits of his home. The two utilities frequently contribute guest columns.

Others who serve as commissioners and the organizations they represent are Vernon Blalok, member-at-large, John Engelsman, Baker Association of

Commerce, and Leona Benoit, local schoolteacher. The panelists, all city council members and Mayor Pete Heine have toured River Bend and the Energy Information Center near St. Francisville.

In February, the commission held another "Energy Week" observance. Again, representatives of the two utilities joined with city officials in showing how residents could make their homes more energy efficient. During the Feb. 22-26 event, Babin gave a presentation on rising utility costs. "Do-it-yourself" projects demonstrated by GSU and Dixie representatives included caulking, weatherstripping, installation of water heater jackets, using gaskets around outlets and using duct wrap. Other energy conservation suggestions focused on proper appliance use, meter reading and installation of solar film.

Hill said the commission is seeking some federal funds, although the money is hard to get. He added, "We feel that energy conservation is not just for the impoverished but for the person who thinks he has an energy-efficient home but really doesn't."

In another project, the commission assisted the Baker Jaycees, the Baker Council on Aging, Rockwool Industries, Baton Rouge Insulation Company, Econ Services and GSU in retrofitting a 1940-vintage home on piers. Analysis of the success of the completed project is expected sometime this year.

Babin describes the energy commission as "an excellent example of grassroots support and involvement in energy-related activities."



Auditors ace raft race

Eight members of the auditing department at Edison Plaza took first place in the show division of the annual K106 raft race down the Neches River in April.

"The raft was pretty big and hard to row," reported Sam Adams. The letters — K106 — stood 8 feet tall and the crew worked at night for about two weeks building it.

Pictured from left are Adams, David Herring, John Carrara, Sally Russell, David Agnew, Barry Howell and John Oliver.



Trophy draws attention

A 4-foot-tall trophy peeks out over the top of a cubicle on the 14th floor of Edison Plaza where James Perry has the memento displayed. Perry, shown at left in photo, and Benny Wilkinson, right, play on the "Blind Factory" softball team that claimed the large prize. The team, undefeated in city league and holder of the GSU tournament championship,

won the 4-foot trophy by placing third, out of 35 teams, in a recent privately sponsored tournament. (The first-place trophy was 5 feet tall.)

Players on the team are: Dennis Canizaro, Mike Cross (Texaco), Tommy Goth, Eddie Grant, Mike Jiongo, Dave Linville, James Perry, John Price, Alvin Roberts, Gary Sobczak, Steve Waters and Benny Wilkinson. As *Plain Talks* went to press, the team was preparing to defend its title in the annual GSU Softball Tournament.



Crawfish boil honors crews

The maintenance crews at Louisiana Station plowed into 450 pounds of crawfish when the group was recognized for their work during recent equipment outages. As the photo shows, there was plenty of crawfish for all who attended.

Plain Talks correspondent Dave Thornhill reported that Joe Burton presented a going-away gift to Clark Hebert, who has been transferred to Willow Glen.

Chamber group tours Sabine

Superintendent Joe Domino played host to the Orange Chamber of Commerce executive board which held its April meeting at Sabine Station in Bridge City.

Abie Stough briefly explained the operations of the power plant and then took the chamber executives on a tour of the facility.

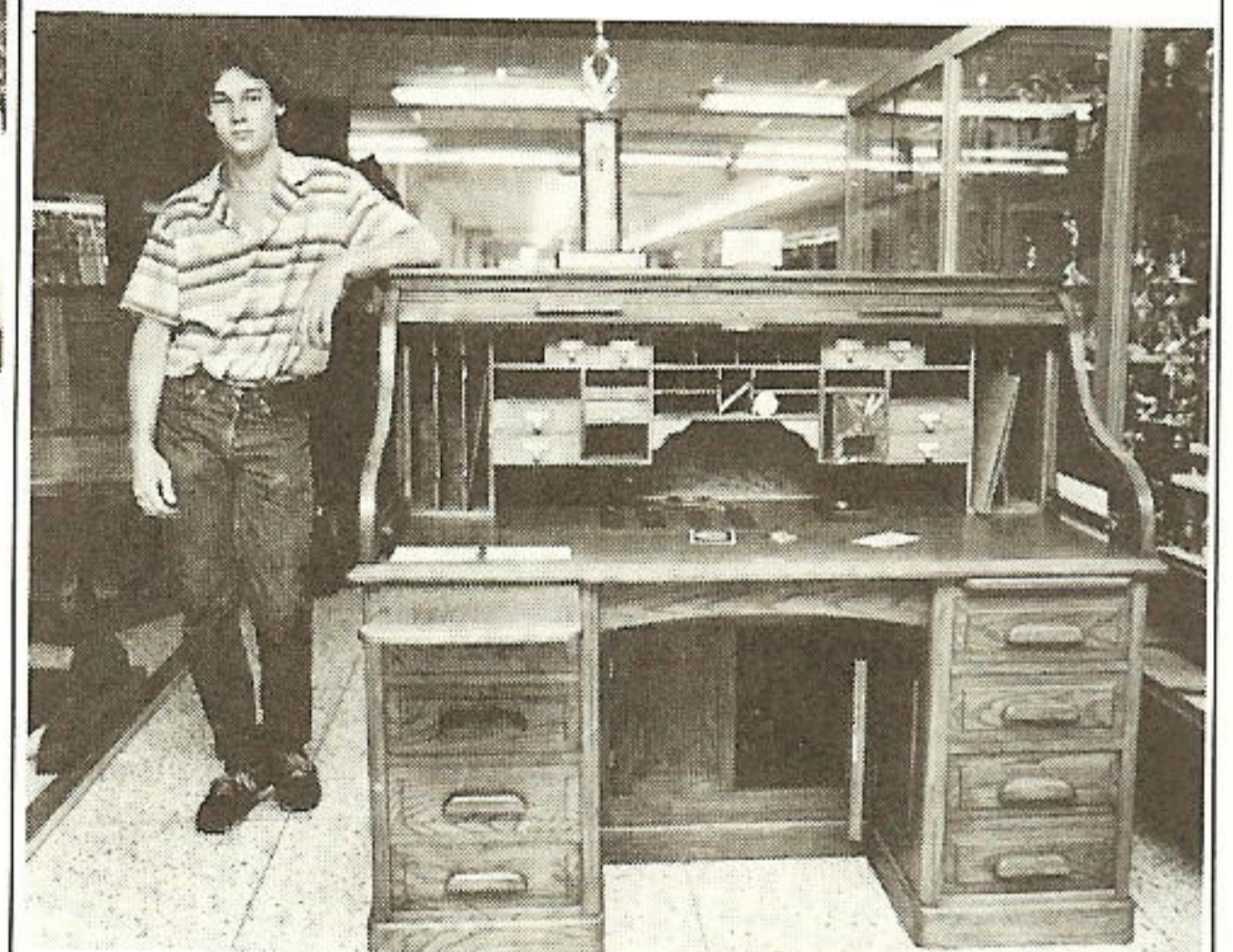
Plain Talks correspondent Doris Wallace reported the

visitors were most interested in the method used to inject fuel into the boilers.

Head gets Lt. Col. post

Donald R. Head, promoted to United States Marine Corps. lieutenant colonel in a May 10 ceremony in Orlando, Fla., had his silver oak leaves pinned on by his mother, Helen Head, and his wife, Marcy, at the ritual.

Lt. Col. Head is responsible for coordinating Marine training-equipment requirements for ground forces. His mother supervises the switchboard in GSU's headquarters, Edison Plaza.



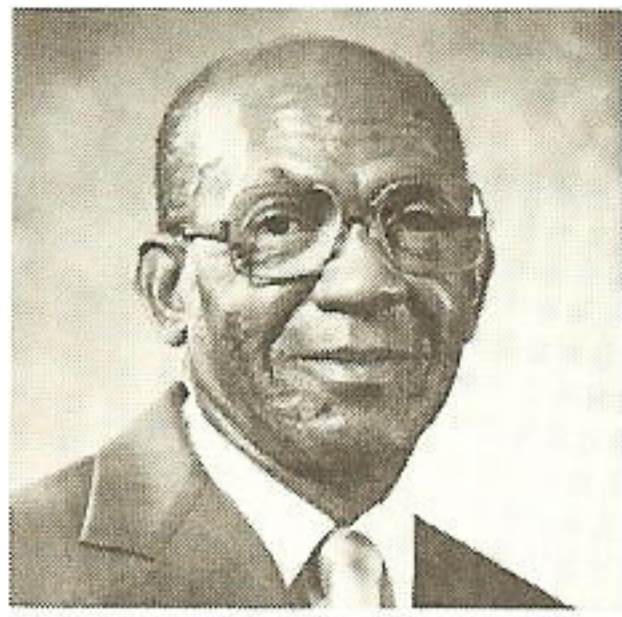
Booker builds winning desk

Bryan Booker, son of Jim Booker, manager of technical programs, River Bend Nuclear Group, designed and built a desk that took first place recently in the Texas State Industrial Arts Competition.

In the photograph, Bryan stands next to the desk, a reproduction of an antique roll-top desk. Bryan designed and constructed the desk in his woodshop class during the school year while he was a senior at Forest Park High School in Beaumont.

SERVICE AWARDS

40
years

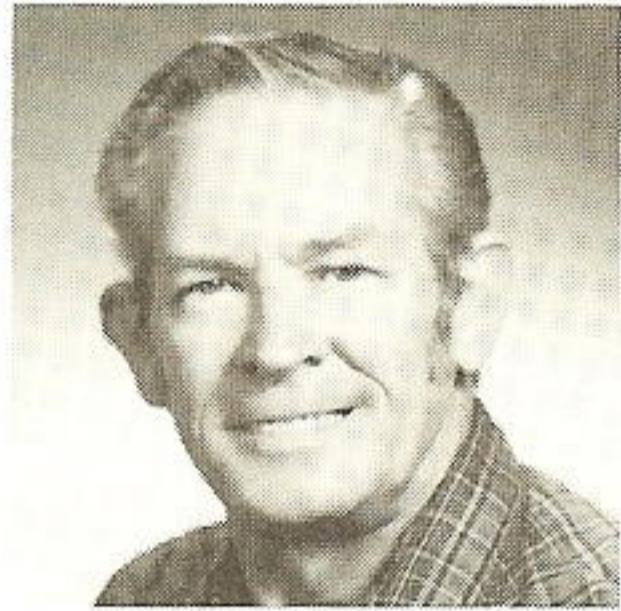


Andrew J. Johnson
Division Accounting
Orange

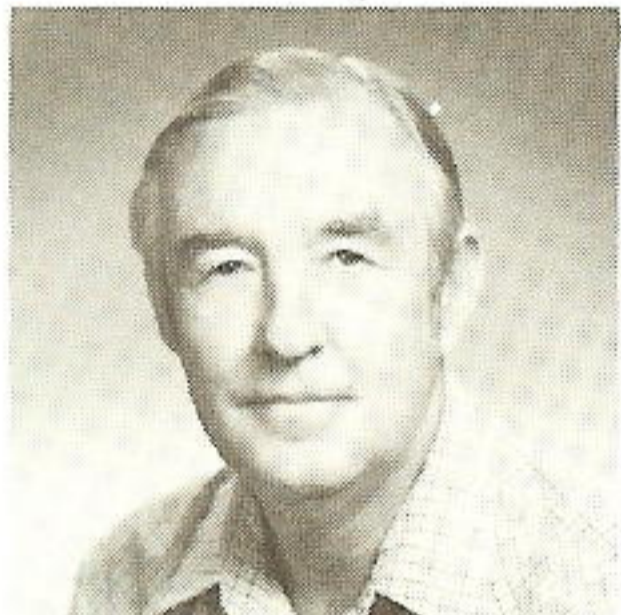
30
years



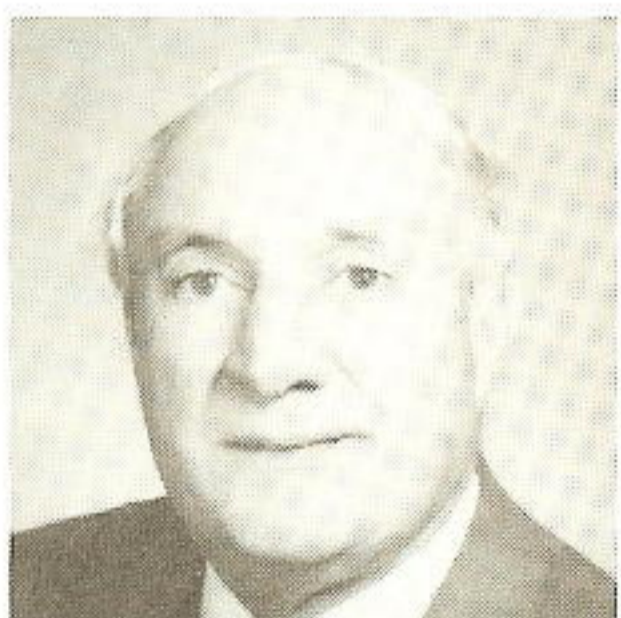
Sheldon P. Fruge
Plant Production
Nelson Station



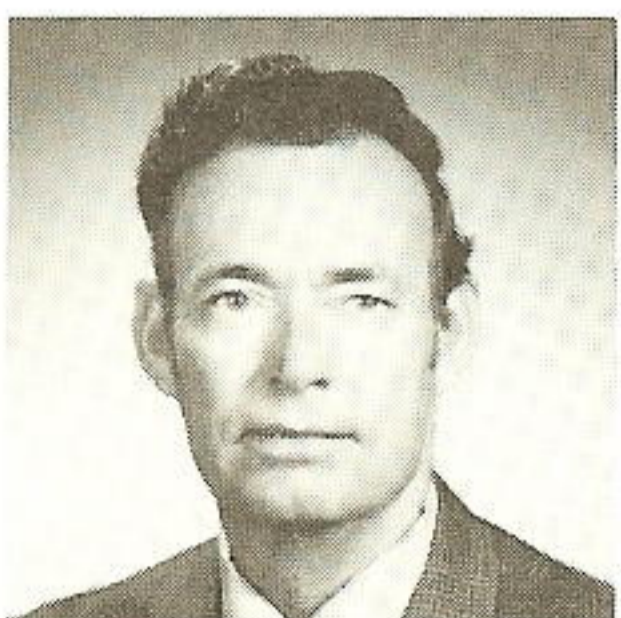
Harrell L. Harrison
Plant Production
Louisiana Station



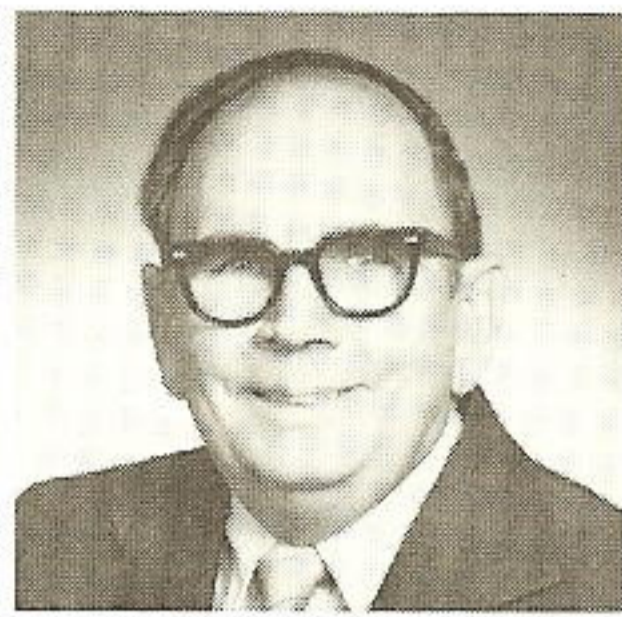
Henry R. Green
Electric T&D
Baton Rouge



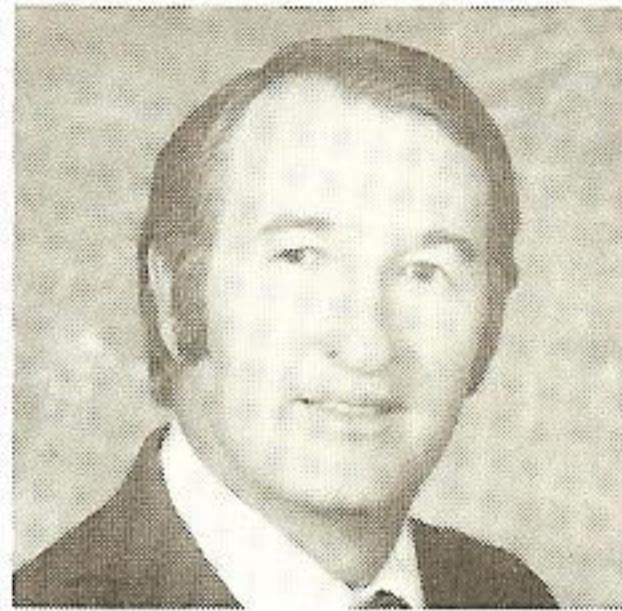
John R. Robin
Electric T&D
Lafayette



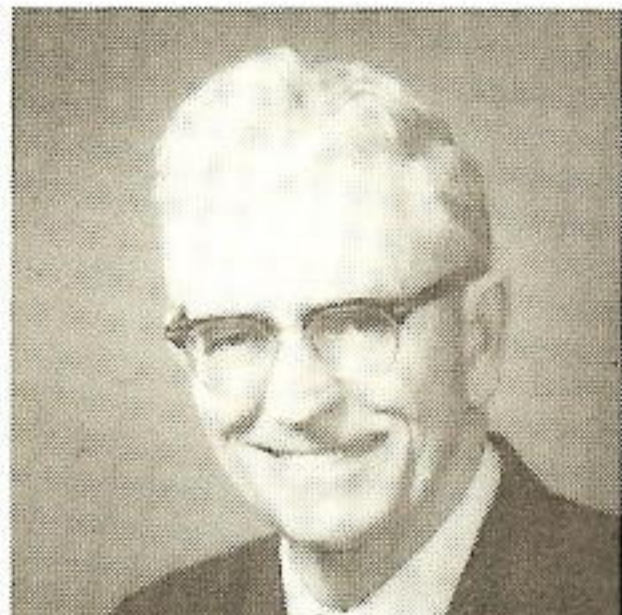
Nathan J. Thibodeaux
Electric T&D
Baton Rouge



Dennis A. Bourg
Gas Department
Baton Rouge

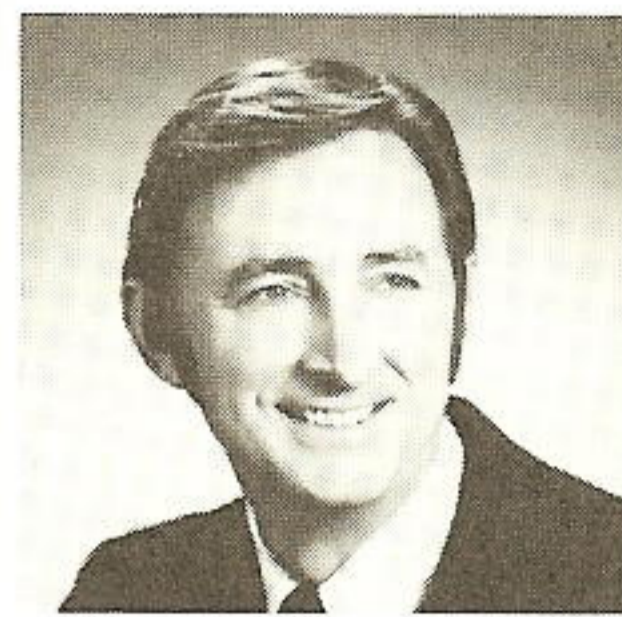


Horace A. Taylor
Plant Production
Sabine Station

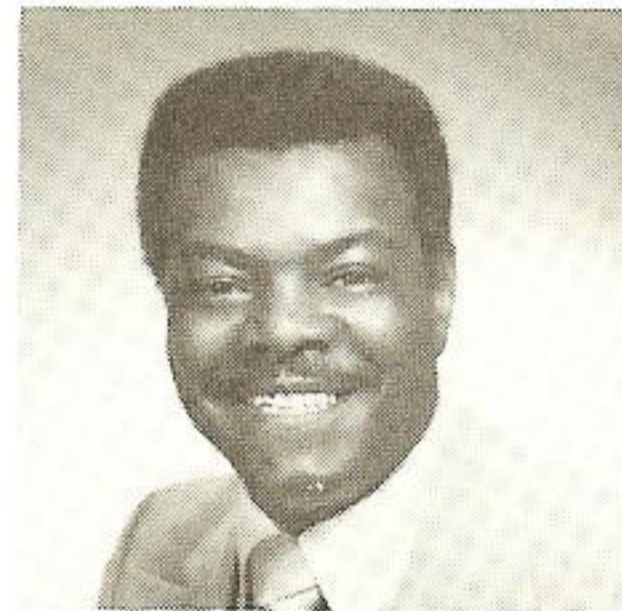


Raymond T. Kearney
System Engineering
Beaumont

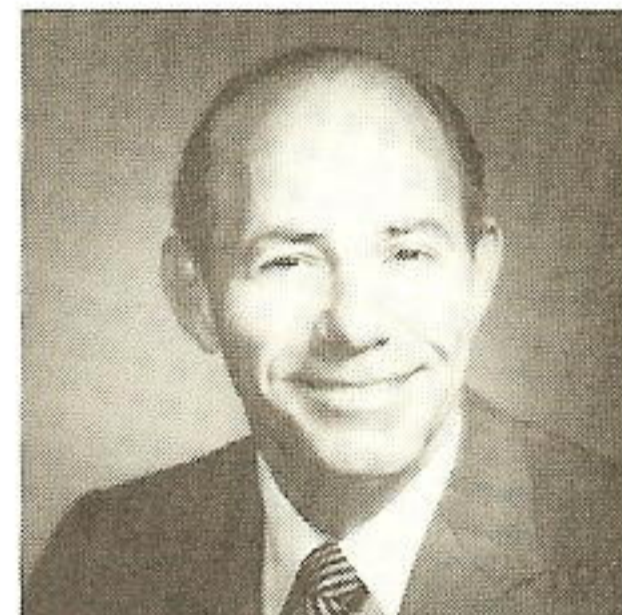
20
years



Calvin J. Hebert
Executive Department
Beaumont



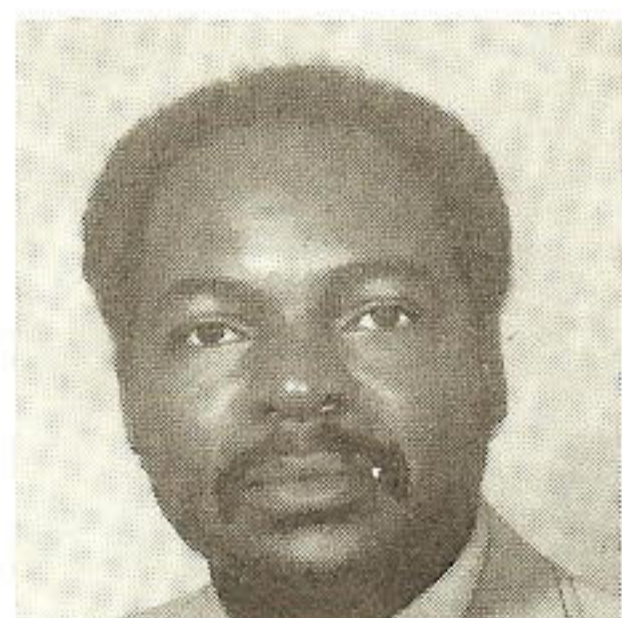
Manfield Hollin
Electric T&D
Baton Rouge



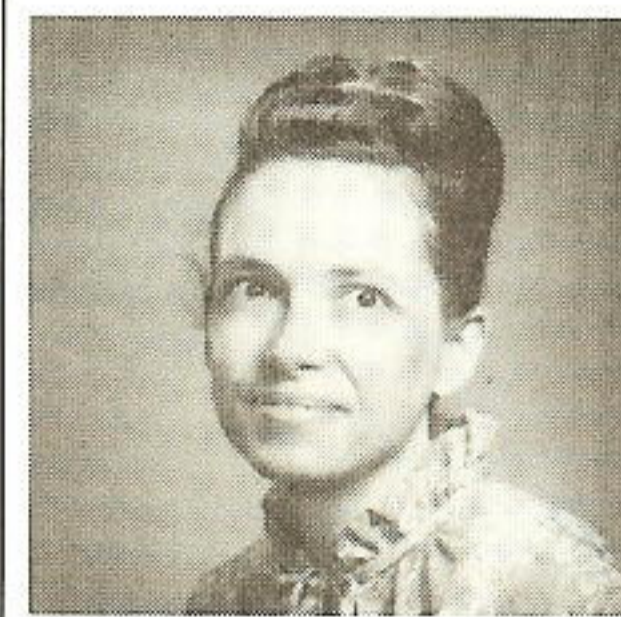
Olice Steward
Risk Management
Beaumont



Wiltz C. Hanks Jr.
Electric T&D
Lake Charles



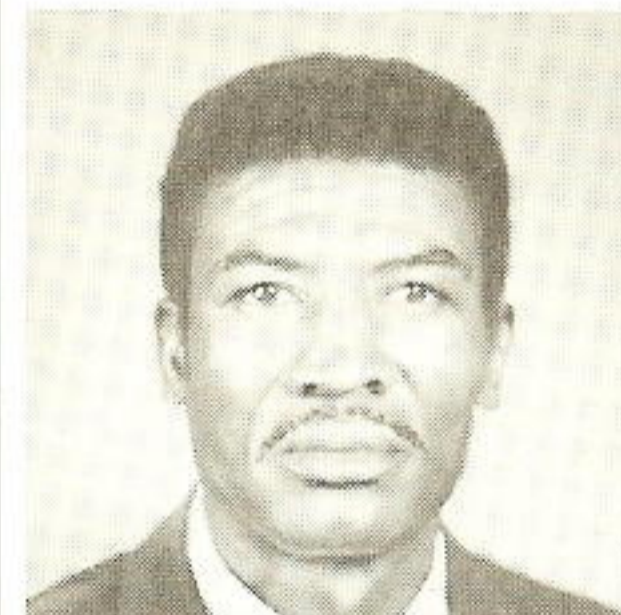
Robert L. Hill
Plant Production
Sabine Station



Glenda G. Sims
Nuclear Group
Beaumont



William D. Bates
Electric T&D
Lake Charles

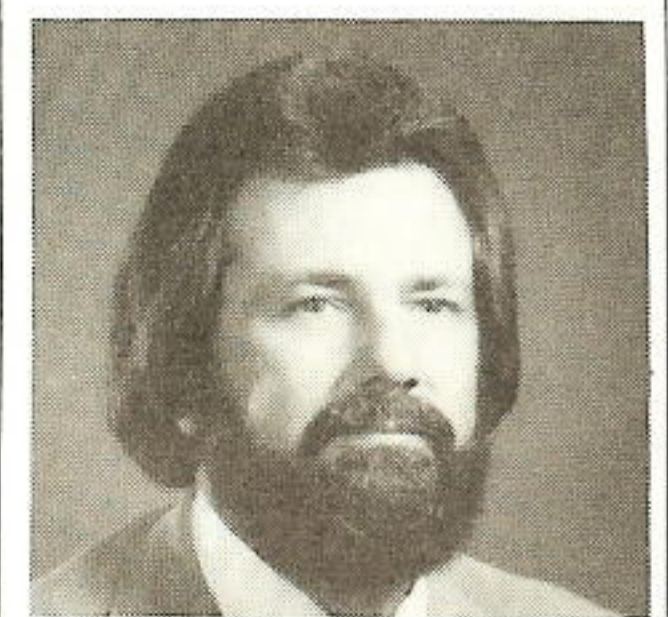


Louis W. Jones
Electric T&D
Baton Rouge

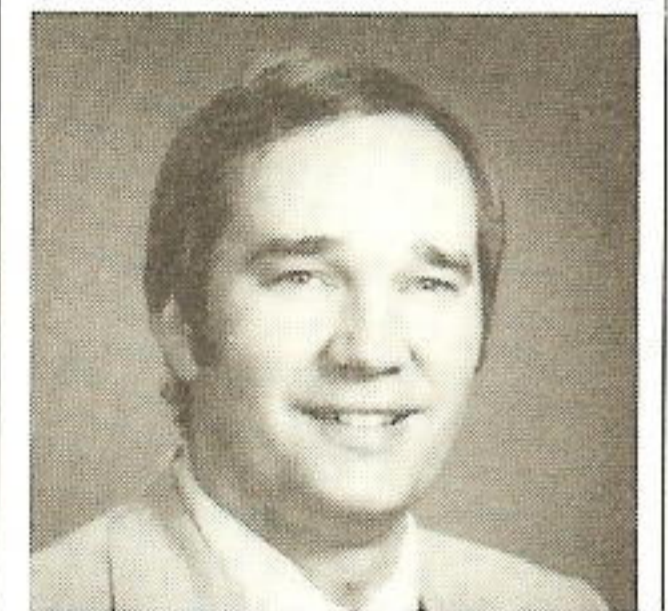


Chester O. Draper Jr.
Plant Production
Sabine Station

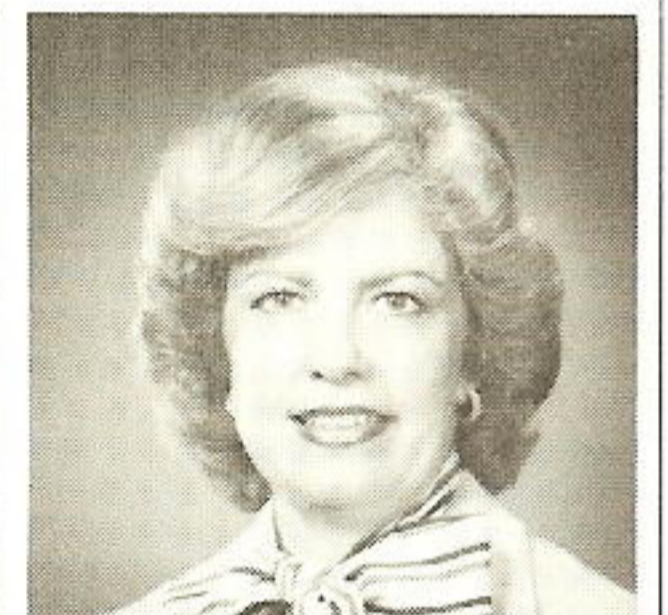
10
years



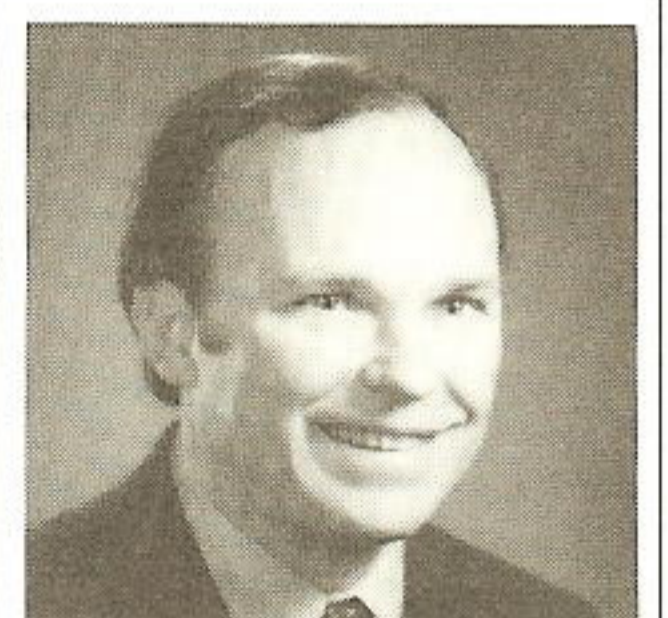
Larry D. Helms
Electric T&D
Beaumont



David L. Smythia
Power Supply
Beaumont

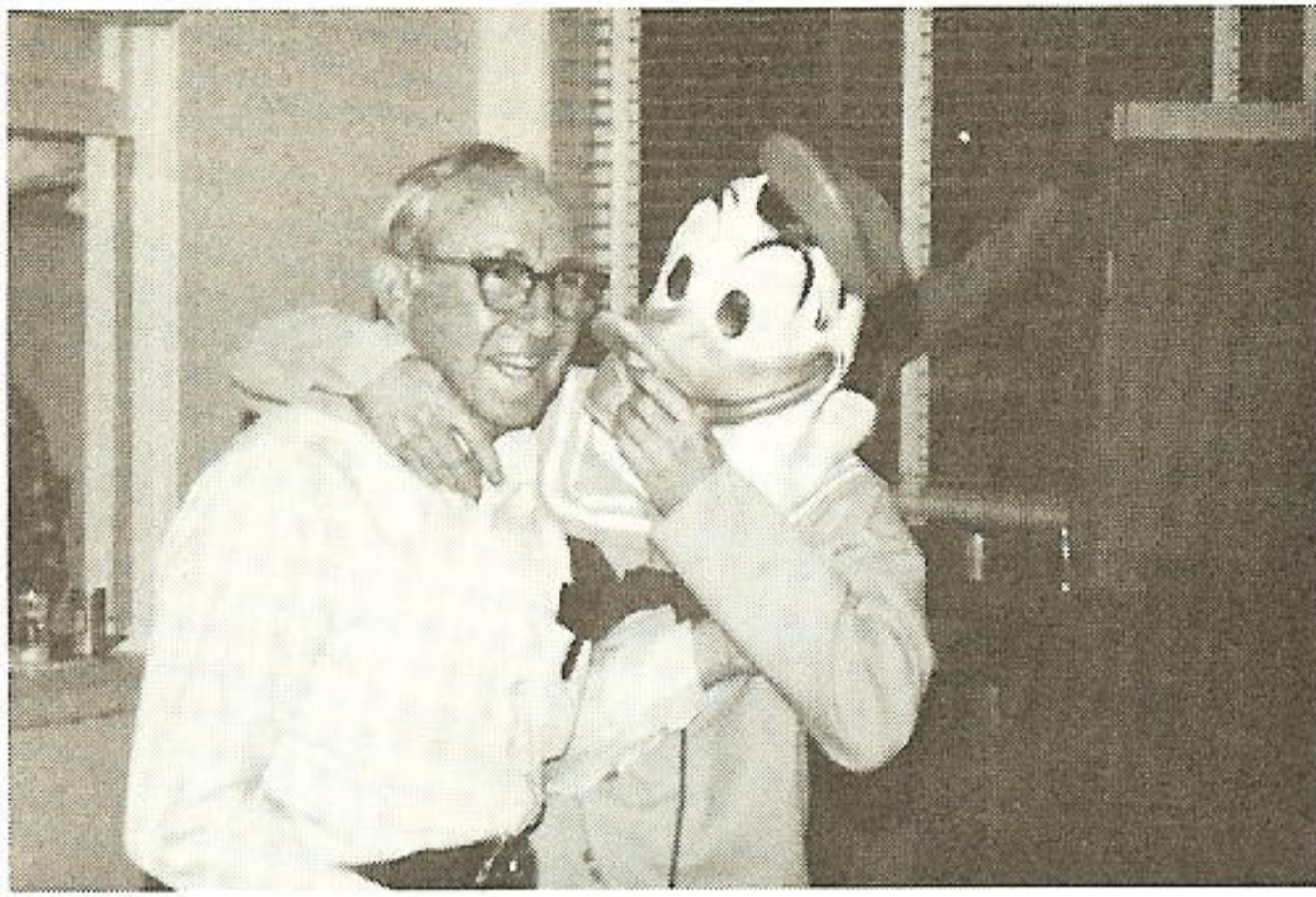


Audrey S. Evans
Office Services
Beaumont



James McLaughlin
Power Interconnections
Beaumont

RETIREE UPDATE



Dupuy retires after 38 years

Just a few days before Herman Dupuy retired after 38 years with Gulf States, his fellow employees at Louisiana Station threw a party for him.

Special guest was "Donald Duck", otherwise known as Randy Braud.

At the time of his retirement April 30, Dupuy was foreman of mechanical maintenance, a position he had held for 3½ years. The previous 18 years, he had been a master repairman.

Retirees hear conservation talk

Doris Hay, consumer affairs coordinator for the Lake Charles Division, and Jim Richardson, consumer services superintendent, talked conservation at the March meeting of the Lake Charles Division Sideliners Club.

Because of rising heating costs, many older people are moving to the Sun Belt and, because of the high cost of production, energy producers are now encouraging consumers to conserve energy, Doris said. People are being urged to weatherize their homes to conserve energy, she said.

Richardson pointed out that weatherization information is available and will be mailed out to retirees soon.

He also announced the dedication of the Nelson 6 coal plant will be held in June, with an open house scheduled for employees and retirees.

Two scheduled to retire

Two Beaumont Service Center employees are scheduled to retire on July 1.

They are Hurley R. Hamm of Kountze, a meterman-1st class in the T&D Meter Department, and Sidney F. Krebs of Beaumont, a service supervisor in the T&D Service Department.

Illness claims J. R. Abernathy

Joseph R. Abernathy, 81, of Vidor died May 11 at Baptist Hospital after an illness.

A native of Catawba, N.C., and formerly of Spurger, he was a retired GSU foreman.

Survivors include his wife, Vera Abernathy of Vidor and a stepdaughter, Gail Carroll of Vidor.

McReynolds dies in Beaumont

R. A. "Slim" McReynolds, 66, of Silsbee died March 10 in St. Elizabeth Hospital in Beaumont after an illness.

A native of Malvern, Ark., he had lived in Silsbee 25 years and was a retired line foreman for Gulf States. McReynolds was a World War II Army veteran.

Survivors include his wife, Georgia Ayleen McReynolds of Silsbee; a daughter, Faye McClain of Little Rock, Ark.; two sisters, Lucille Modica of Beaumont and Margaret McClain of Heritage, Ark.; and a brother, Calvin McReynolds of Beaumont.

Two retirees die in April

Raymond H. Knapp of Baton Rouge died April 1. He is survived by his wife, Ruth Elaine Knapp.

Thermon D. Haley of Mexia, Texas, died April 10. He is survived by his wife, Mary Elsie Haley.

Albe dies at home

John H. "Buck" Albe, 83, of Beaumont died at his home March 18. He was a retired rigger foreman for Gulf States.

Services were held March 20 in the chapel of Broussard's Mortuary with the Rev. Glenn Moore officiating. Masonic graveside services were conducted in Forest Lawn Memorial Park.

Survivors include his wife, Edna Griffith Albe of Beaumont; a daughter, Elodie Ryden of Beaumont; a brother, W. E. Roapke of Beaumont; three sisters, Dollie Brady and Nellie Brady, both of Beaumont, and Rhoda Benson of El Reno, Okla., and one grandson, John Charles Weitzel of Beaumont.

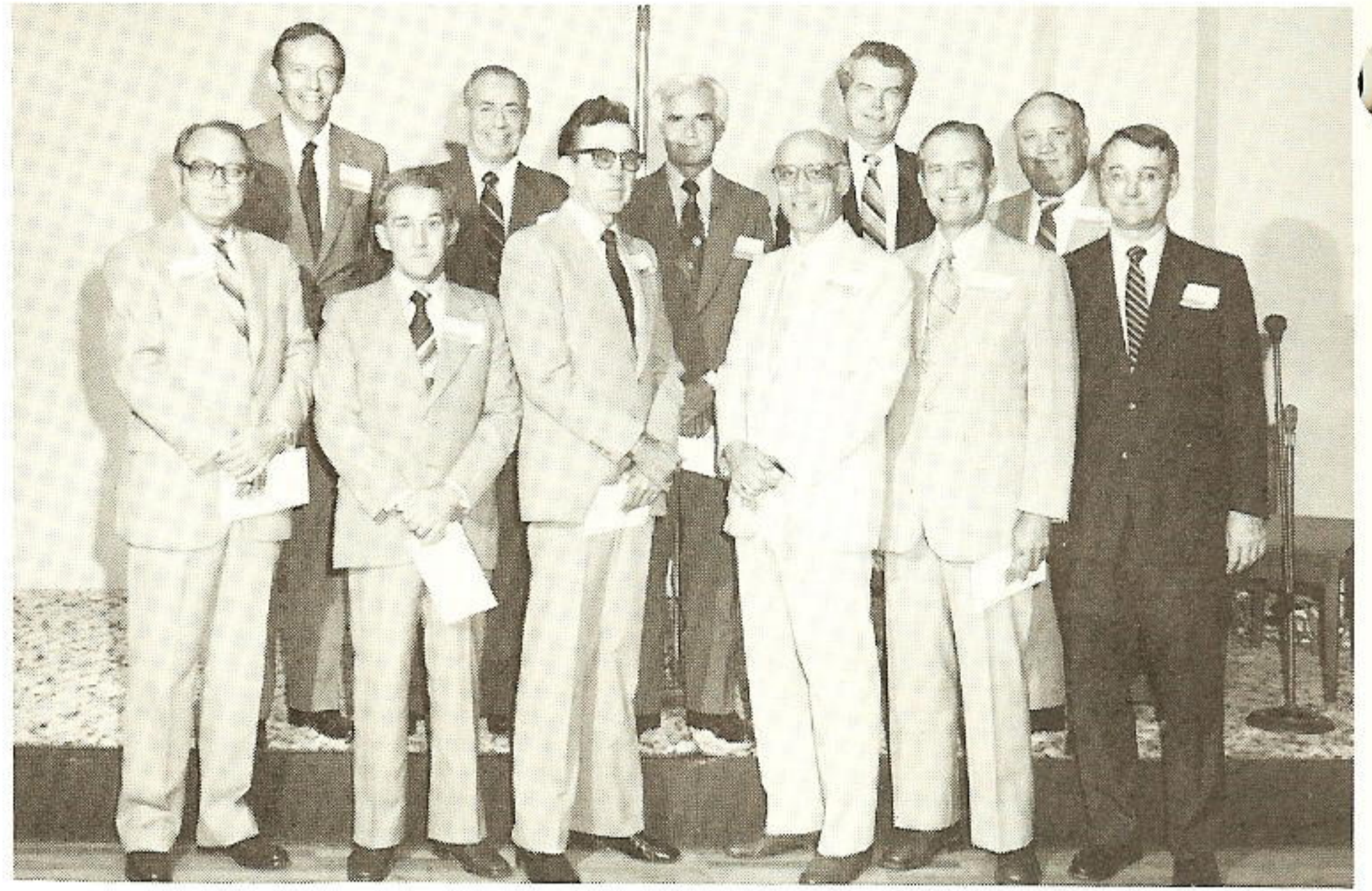


Beaumont honored by counterparts

When Carl Beaumont, general line foreman in Port Arthur Division, attended a recent general line supervisors' meeting, he was honored by his counterparts. They presented him with a commemorative plaque and a decorated cake. Shown making the presentation to Beaumont (at right) is Dudley Clarke, a Lake Charles line foreman. Beaumont will end a 43-year career when he retires in October.

System

Service Awards Banquets



30 years, front row left to right: Tom Whiddon, Ed Wheeler, Max Smith, Frank LeMire, Bob Collier and Malcolm Williams. Back row left to right: GSU Chief Executive officer Dr. Paul Murrill, Jim Turner, Ward McCurtain, Jim Cornelius and President Norman Lee.



20 years, front row left to right: Clara Perino, Irby Thibodeaux, Beth Dodge and Betty Bass. Back row left to right: Murrill, Bobby Joe Willis, Ray Holm, Tom Parsley, Ron Getz, Willis (Butch) Coon and Lee.



10 years, front row left to right: Jacque Perkins, Mary Leger, Betty Lebert, Lenelle Gracey, Loyce Fontenot, Molly Field, Paula Crowley and Barbara Burris. Back row left to right: Murrill, Ken Sandberg, Bill Tindall, John Zemanek, Bennie Hickman and Lee.

Baton Rouge Division



40 years, front row left to right, pictured with wives: Quida and Stanley Davis, Eva and Ben Campo, Doycie and Philip Marquette and Division Vice President Jim Moss. Back row left to right: Ben and Lorraine Exner and Russell and Emily Bonnette.



30 years, front row left to right: wives Janie Walker, Evelyn Smith, Colleen Creel, Rose Buschmihle and Lorraine Foss with Moss. Back row left to right: the honorees, Alton Walker, Sam Smith, Ray Creel, Howard Buschmihle and Charles Foss.



30 years, front row left to right: wives Elsie Ford, Lena Breeden, Dot Clark, Irene Oubre and Allie White with Moss. Back row left to right: the honorees, Charlie Ford, Harry Breeden, Kimberly Clark, Joe Oubre and A. B. White.



20 years: Gary Diamond with Moss.



10 years, front row left to right: Steve Chustz, Linda Luneau, Gene Locke and Moss. Second row left to right: Wilbert Brooks, John Brister, Alton Bryer and David Fontenot. Back row left to right: Ken Owens, Donny Elliott and Stanley Pollins.



10 years, front row left to right: Martin Unbehagen, John Dencausse, Jimmy Curtis, John Carr, Linda Luneau, Robert Graves and Moss. Back row left to right: Conrad Starns, Curtis McGrew, Mike Saucier and Donald Vessier.

Lake Charles Division



30 years, front left to right: Joe D. Brown, Wilfred Broussard, Robert G. Domingue and Claude Patin. Back row left to right: Leroy Anderson, Wayne C. McGlivray, M. L. Rushing, Emile S. Krouse Jr. and Rodney L. Ringuet.

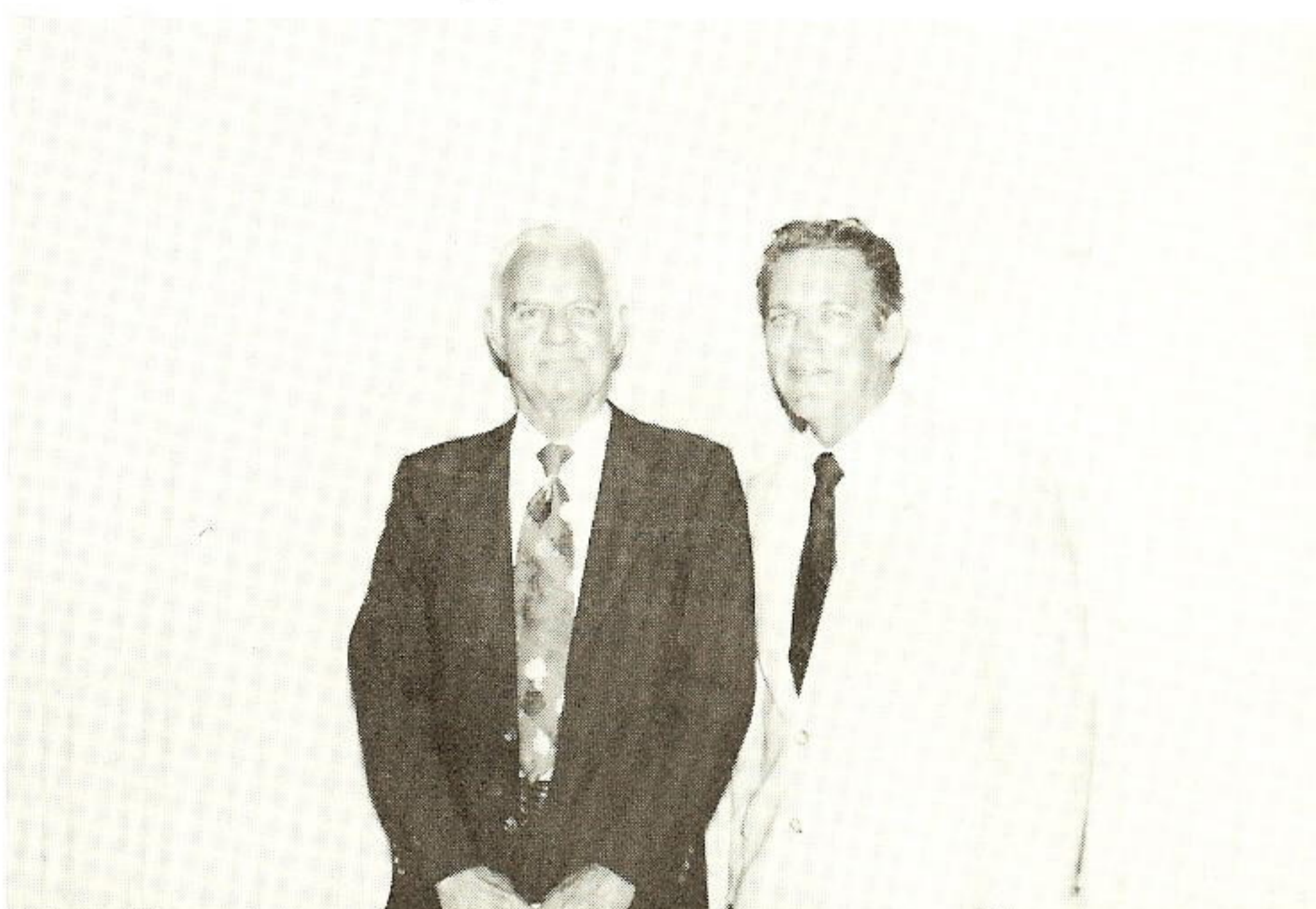


20 years, front row left to right: John A. Landry, Joyce B. Guillory, Edith C. Patterson and Jules G. Benoit. Back row left to right: Joseph R. N. Cloutier, Edwin A. Grimshaw, Rodney K. Nunally, Ralph W. Havard and Robert L. Gary.



10 years, front row left to right: Judge R. Williamson, Rita F. Thibodeaux and Jessie Guinn III. Back row left to right: Myron C. Brown and Michael Guilbeau.

Western Division



30 years, left to right: T. J. Dinkins and Division Vice President John Conley.



20 years: Charles DeCuir with Conley.



10 years, front row left to right: George Hapes, Edgar Fenner, Doris Andress, Dianna Winkelmann, Billie Schaefer, Karen Morley and Conley. Back row left to right: Davis Moulder and Bob Sigsbee.

Beaumont Division



40 years, left to right: Jack T. Doiron with his wife Lillian, Hattie L. Garner with honoree Earl H. Garner and Division Vice President Arden Loughmiller.



30 years, left to right: Loughmiller, Edgar Perkins, Harold Dubuisson, Billy Fountain, Tom Mitchell Jr., Ward Nusom, Oliver Peveto, Claiborne Russum, Douglas C. Sheppard and Lawrence Wenzell.



20 years, left to right: Loughmiller, Larry Cleveland, David Doss, Tommy Elliott, William E. Fox, Kenneth Haynes and Clyde Nugent.



10 years, left to right: Loughmiller, Greg Williams, Lloyd Ryman, Donna Derise, James Collier and Fred Augustine.

(EDITOR'S NOTE: Due to the date of Port Arthur Division's banquet, the photographs will be printed in next month's *Plain Talks*.)

ON THE MOVE

Adams, Rodney E., Port Arthur, to test technician-2nd class, Plant Production.

Agnew, Jack, Willow Glen, to master electrician, Plant Production.

Allbritton, Harold W., Orange, to substation mechanic-4th class, Electric T&D.

Anderson, Dwight E., Port Arthur, to building & grounds maintenance man, Electric T&D.

Ardoin, Justin A., Lake Charles, to apprentice, Electric T&D.

Ball, John M., Louisiana Station, to switchboard operator, Plant Production.

Benton, James Jr., Port Arthur, to garage worker, Electric T&D.

Blair, Ramon, Jennings, to lineman-3rd class, Electric T&D.

Booker, Otis, Louisiana Station, to second fireman, Plant Production.

Boullion, Clinton D., Beaumont, to lineman-4th class, Electric T&D.

Brawner, David, Nelson Coal, to repairman-1st class, Plant Production.

Brouillette, Stephen L., Beaumont, to supervisor-budget control, Accounting Services.

Broussard, Bobby L., Beaumont, to utility man, Electric T&D.

Broussard, Brenda B., Port Arthur, to electrician-3rd class, Plant Production.

Brown, Bobby R., Beaumont, to utility man, Electric T&D.

Brown, Daniel L., Gonzales, to apprentice, Electric T&D.

Brown, John W., Baton Rouge, to relayman-2nd class, Electric T&D.

Browning, Keith W., Nelson Coal, to test technician-1st class, Plant Production.

Buchanan, Kathy A., Baton Rouge, to lineman-4th class, Electric T&D.

Bush, Gregory A., Port Allen, to lineman-2nd class, Electric T&D.

Canatella, Sam, Jr., Navasota, to apprentice, Electric T&D.

Carter, Joe T., Jr., Beaumont, to apprentice, Electric T&D.

Carter, Johnnie C., Port Arthur, to communications foreman, T&D Communications.

Chaisson, Patricia A., Lafayette, to engineering assistant, Electric T&D.

Clark, Alfred Jr., Port Arthur, to repairman-2nd class, Plant Production.

Cole, Norma M., Beaumont, to senior billing clerk, Accounting Services.

Core, Earl D., Beaumont, to building & grounds maintenance man, Building Services.

Cockran, Burl A., Lake Charles, to lineman-2nd class, Electric T&D.

Cowan, Patrick P., Willow Glen, to electrician-2nd class, Plant Production.

Darbonne, David B., Willow Glen, to test technician-2nd class, Plant Production.

Davis, Donald R., Baton Rouge, to lineman-2nd class, Electric T&D.

DeLuish, Rachel W., Conroe, to stenographer-senior, Electric T&D.

Dickerson, Linda K., Conroe, to mechanic helper, Plant Production.

Donellan, Vincent M., Louisiana Station, to switchboard operator, Plant Production.

Dougherty, Alan L., Nelson Coal, to engineering assistant, Plant Production.

Driver, Darryl R., New Caney, to apprentice, Electric T&D.

Duhamel, Alfred V., Port Arthur, to substation mechanic-3rd class, Electric T&D.

Duplantis, Douglas G., Lake Charles, to garage mechanic-1st class, Electric T&D.

Elter, Terrell G., Lake Charles, to lineman-2nd class, Electric T&D.

Floyd, Rand L., Beaumont, to shop foreman, T&D Line.

Francis, Earnest, Jr., Port Arthur, to substation mechanic-1st class, Electric T&D.

Gautreaux, John E., Baton Rouge, to building & grounds maintenance foreman, T&D Meter.

Gibson, Clinon, Baton Rouge, to serviceman-1st class, Electric T&D.

Gibson, Lisa G., Louisiana Station, to engineering helper, Plant Production.

Goodman, Tony C., Baton Rouge, to lineman-2nd class, Electric T&D.

Gross, Michael L., Beaumont, to repairman-2nd class, Plant Production.

Guins, Alan P., Nelson Coal, to mechanic helper, Plant Production.

Hale, Ronald D., Beaumont, to supervisor-consumer services, Division Consumer Services.

Harrison, Joseph Jr., Port Arthur, to mechanic helper, Plant Production.

Harrison, Russell L., III, Conroe, to senior engineering assistant, Electric T&D.

Hill, Darius W., Baton Rouge, to substation mechanic-4th class, Electric T&D.

Hollier, Jean L., Lafayette, to lineman-4th class, Electric T&D.

Homme, Thor W., Port Arthur, to repairman-1st class, Plant Production.

Humphrey, Lena J., Gonzales, to customer contact clerk, Division Accounting.

Humphrey, Mark W., Huntsville, to lineman-3rd class, Electric T&D.

Jackson, Andre L., Beaumont, to serviceman-4th class (Training), Electric T&D.

James, Dane A., Port Arthur, to apprentice, Electric T&D.

James, Gary R., Lake Charles, to garage mechanic helper, Electric T&D.

Jennings, Leonard, Lake Charles, to serviceman-2nd class, Electric T&D.

Jernigan, James W., Sabine Station, to plant chemist, Plant Production.

Jolissaint, George S., Louisiana Station, to head fireman, Plant Production.

Jolissaint, Larry F., Baton Rouge, to lineman-1st class, Electric T&D.

Jones, Julia L., Conroe, to senior engineering assistant, Electric T&D.

Jorden, John D., Beaumont, to line foreman, T&D Line.

Kettl, Lonnie J., St. Francisville, to switchboard operator, Plant Production.

Kilgore, Gary E., Beaumont, to cost engineer, River Bend Nuclear Group.

Laws, Roger D., Louisiana Station, to turbine-water plant operator, Plant Production.

LeBlanc, Keith A., Port Arthur, to lineman-1st class, Electric T&D.

LeGrange, Perry N., Willow Glen, to test technician 3rd class, Plant Production.

Lewis, Milton T., III, Lake Charles, to serviceman-1st class, Electric T&D.

Locke, Quitman E., Baton Rouge, to utility foreman, T&D Line.

Mascarella, Charles R., Willow Glen, to repairman-1st class, Plant Production.

Matsoukas, Edward B., formerly of Orange, to forecasting data analyst, Beaumont System Consumer Services.

McDaniel, Melvin L., formerly of Nelson Coal Plant, to control operations foreman, Sabine Station Plant Production.

McGowan, Michael E., Beaumont, to repairman-1st class, Plant Production.

McNabb, John L., Baton Rouge, to serviceman-1st class, Electric T&D.

Miller, Randell L., Lake Charles, to lineman-3rd class, Electric T&D.

Morse, Frank D., Port Arthur, to equipment operator, Plant Production.

Mothershed, Jimmie R., Conroe, to equipment operator, Plant Production.

Narcisse, Paul J., Beaumont, to apprentice, Electric T&D.

Nelson, Gary L., Lake Charles, to lineman-3rd class, Electric T&D.

Newman, Joseph, Nelson Coal, to mechanic helper, Plant Production.

Nickson, Gloria D., Beaumont, to general clerk, Accounting Services.

Norris, Roosevelt, Louisiana Station, to planning coordinator, Plant Production.

Ochoa, James L., Beaumont, to repairman-1st class, Plant Production.

Oden, James M., Lake Charles, to substation mechanic-4th class, Electric T&D.

Odom, Leslie J., Conroe, to relay foreman, T&D Relay & Communications.

Pajak, Stephen, Willow Glen, to test technician-1st class, Plant Production.

Patel, Rasiklal A., formerly of Lake Charles, to system planning engineer, Beaumont System Engineering.

Patterson, John G., Nelson Station, to electrician-2nd class, Plant Production.

Patton, Lindsey Jr., Louisiana Station, to electrician-1st class, Plant Production.

Prejean, Nalton L., Beaumont, to insulator-1st class, Plant Production.

Reddin, Mark A., Beaumont, to apprentice, Electric T&D.

Rhodes, Roger K., Willow Glen, to repairman-1st class, Plant Production.

Richards, James A., Beaumont, to repairman-1st class, Plant Production.

Roberts, Craig L., Willow Glen, to test technician-1st class, Plant Production.

Rowe, Robert J., Beaumont, to electrician-1st class, Plant Production.

Ryan, John A., Lafayette, to garage worker, Electric T&D.

Saale, David J., Port Allen, to lineman-3rd class, Electric T&D.

St. Julien, Jason, Orange, to meterman-2nd class, Electric T&D.

Schoolfield, John C., Port Arthur, to test technician-3rd class, Plant Production.

Scott, Michael J., Conroe, to apprentice, Electric T&D.

Scott, Robert C., Port Arthur, to apprentice, Electric T&D.

Shaw, Darrell L., Conroe, to substation mechanic-2nd class, Electric T&D.

Shelly, Durlen, Conroe, to customer contact clerk, Division Accounting.

Smith, Derrick D., Nelson Coal Plant, to general operation supervisor, Plant Production.

Smith, Leon, Baton Rouge, to garage mechanic-2nd class, Electric T&D.

Soileau, Joseph B., Jr., Lake Charles, to helper, T&D Helper Crews.

Sorrell, Sheila Y., Baton Rouge, to section head, Division Accounting.

Spencer, Susan C., Beaumont, to stenographer-senior, Materials Management.

Sport, Harry C., Port Arthur, to lineman-1st class, Electric T&D.

Stewart, Mark A., Willow Glen, to equipment operator, Plant Production.

Stone, Beverly S., Beaumont, to senior clerk, Division Accounting.

Stone, Robert C., Conroe, to relayman-1st class, Electric T&D.

Storch, William D., Port Arthur, to substation mechanic-3rd class, Electric T&D.

Thibodeaux, Daniel J., Lake Charles, to substation mechanic-4th class, Electric T&D.

Thompson, Gary W., Beaumont, to mechanic helper, Plant Production.

Tong, Hoa, Beaumont, to system control engineer, Power Supply.

Toole, Joe H., Conroe, to relay foreman, T&D Relay & Communications.

Trove, Boyd T., Port Arthur, to apprentice, Electric T&D.

Walling, Curtis A., Nelson Station, to equipment operator, Plant Production.

Ward, Roy K., Beaumont, to meterman-1st class, Electric T&D.

Washington, Leo, Louisiana Station, to turbine-water plant operator, Plant Production.

Waters, Cynthia M., Beaumont, to staff accountant, Accounting Services.

Webb, Ronald G., Port Arthur, to mechanic helper, Plant Production.

Weinbaum, Debra J., Beaumont, to supervisor-corporate budget, Accounting Services.

Wheeler, Daniel E., Beaumont, to associate systems analyst, Computer Applications.

White, Albert B., Baton Rouge, to communications foreman, T&D Communications.

Whitfield, Larry W., Baton Rouge, to lineman-2nd class, Electric T&D.

Williams, James E., Silsbee, to lineman-3rd class, Electric T&D.

Williams, Ronald W., Lake Charles, to lineman-1st class, Electric T&D.

(See page 19.)

Nelson 6 Is a Step Toward Energy Security

Most Gulf Staters — and anyone who grew up in Texas and Louisiana — have never seen coal, touched coal or even thought much about coal. Why should we have? This region was so rich in oil and natural gas, no one thought we'd ever need a fuel that had to be mined thousands of miles away and brought here by rail.

Those really were the "good old days," of course. But the Organization of Petroleum Exporting Countries — better known by the four-letter word OPEC — changed all that.

Although Texas and Louisiana and a few other states were producing vast quantities of oil and gas, there still wasn't enough to supply the nation's needs. The United States was importing large amounts of oil from the OPEC nations and, when they turned off the spigots in 1973, a new and unheard phrase entered the American vocabulary: energy crisis.

One of the ways the federal government dealt with the energy emergency was to decree that no more power plants which used natural gas or oil could be built. That law is still on the books and is undoubtedly destined to stay there.

That law — the Fuel Use Act of 1978 — along with a desire to develop a diverse mix of generating fuels prompted Gulf States to begin building the coal-fired Nelson 6 unit and the River Bend nuclear power plant.

With the June 8 dedication of Nelson 6, GSU has taken a major step toward providing its customers with energy security in the future. During the month of April, as Nelson 6 began producing power as it underwent final testing, 5 percent of the company's fuel use was coal. That is an historic statistic: Never before has any fuel except natural gas or oil been burned in a GSU boiler.

During the time Nelson 6 was being built, company officials repeatedly said that, with oil and natural gas prices on the rise, it was only a matter of time before coal would become more economical. That time had arrived when Nelson 6 produced its first kilowatt-hour. In its first 12 months of operation, the unit will save customers an estimated \$60 million in fuel costs.

Employees who visited the facility during the June 5 open house probably were amazed at what they saw coming from the Nelson 6 stack. What they saw was hardly anything.

Those of us in this section of the country always have associated coal with thick, black smoke billowing from a stack. In that sense, Nelson 6 doesn't look like a coal plant. Modern environmental technology has made coal a much cleaner-burning fuel.

One group of visitors at the Westlake plant didn't think the unit was operating because they couldn't see anything coming from the stack. They were stunned to learn that the unit was running at about 440 megawatts at the time.

Nelson 6 should be a great source of pride for all Gulf Staters:

- It was completed on schedule.
- It was very close to budget.
- It appears to be smooth-running and efficient.
- It is very economical.
- It is environmentally acceptable.
- It uses American coal.
- It adds a new element to the company's fuel mix.

Hundreds of GSU employees, retirees and their families got a first-hand look at the company's newest generating unit on June 5. They're bound to have liked what they saw.

Kim McMurray

"On the Move"

Wiltz, Larry J., Beaumont, to apprentice, Electric T&D.

Woodward, Darrel A., Beaumont, to training representative, Human Resources.

Wooley, Darrell G., Huntsville, to serviceman-2nd class, Electric T&D.

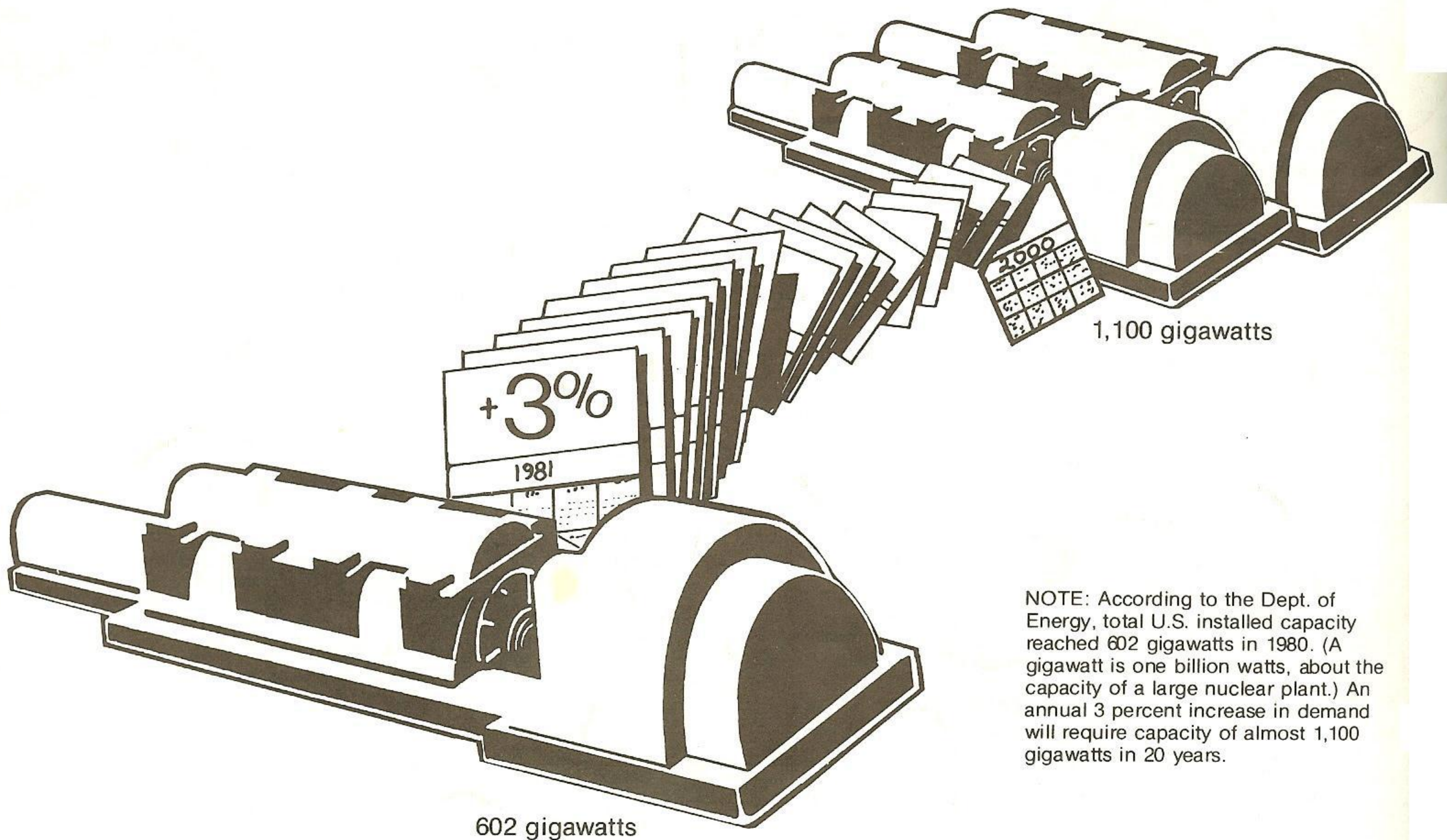
Young, Sevear, Baton Rouge, to meterman-1st class, Gas Department.

Bulk Rate
U.S. POSTAGE
PAID
Beaumont, Texas
Permit No. 11

Q. Is demand for electricity dropping?

A.

No, it's just not growing as fast. U.S. consumers still use substantially more electricity each year than they did the year before. Even at the current growth rate (approximately 3 percent compared to historic rates of 7 and 8 percent), we'll have to almost double our generating capacity to meet the nation's electricity needs in the year 2000.



NOTE: According to the Dept. of Energy, total U.S. installed capacity reached 602 gigawatts in 1980. (A gigawatt is one billion watts, about the capacity of a large nuclear plant.) An annual 3 percent increase in demand will require capacity of almost 1,100 gigawatts in 20 years.