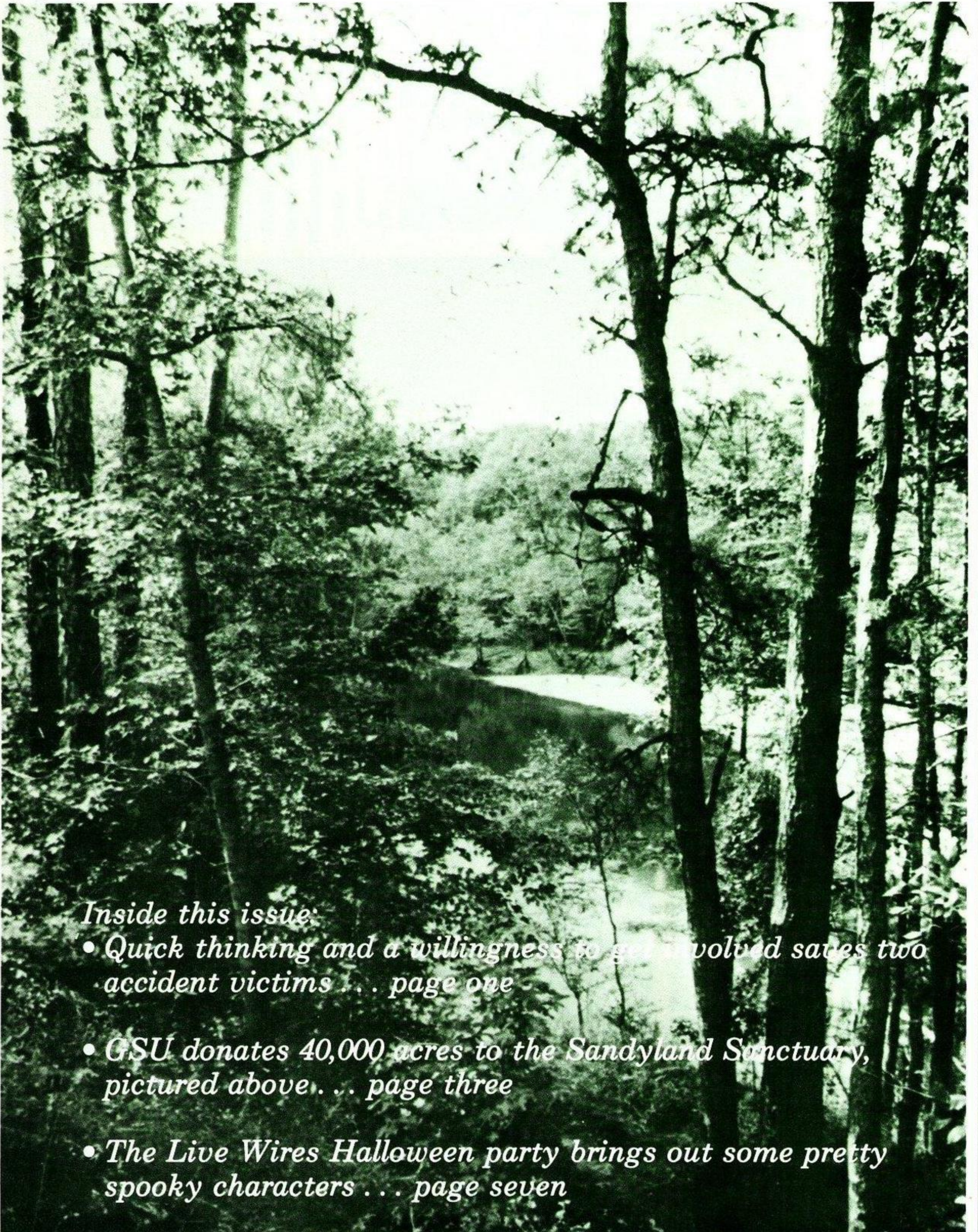


PLAIN TALKS

November, 1978



Inside this issue:

- *Quick thinking and a willingness to get involved saves two accident victims . . . page one*
- *GSU donates 40,000 acres to the Sandyland Sanctuary, pictured above . . . page three*
- *The Live Wires Halloween party brings out some pretty spooky characters . . . page seven*

Plain Talks

Published by employees for employees

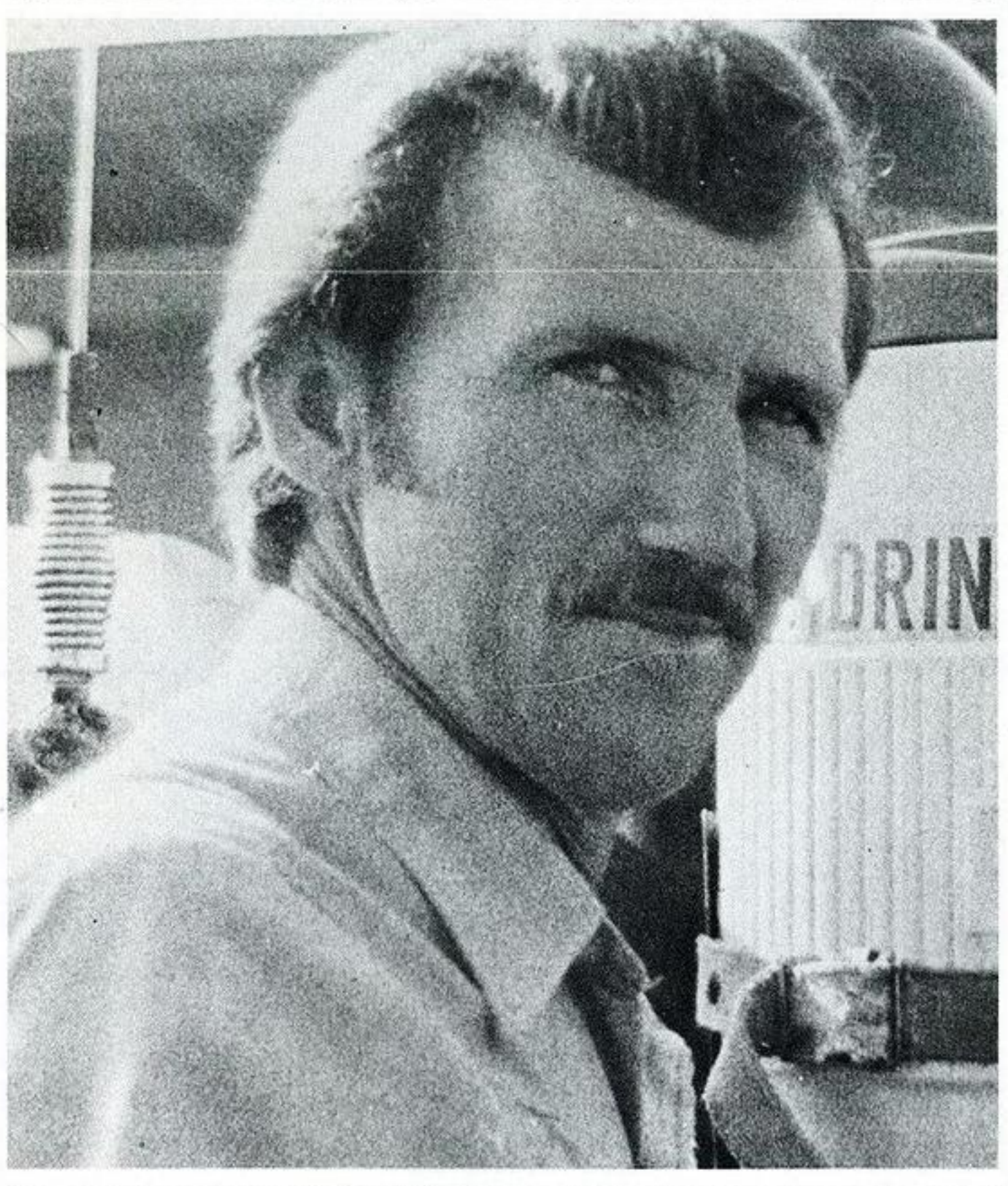
Volume 56 — Number 8 — November, 1978

Employees get involved

Quick thinking saves lives; property

A 10-year-old Baton Rouge girl and her friends return home from school and begin playing around a homemade dune buggy. The girl, whose parents are not home, inhales fumes from an open gasoline container attached to the vehicle and loses consciousness with her face in the opening of the container.

A man is driving on a rural road near Lake Charles when he loses control of his pickup while crossing a bridge. The truck slams into the guard rail, flips over twice and lands in a gully below in 2½ feet of water. The man is draped over the door with injuries



Thomas Ashley

to his head, legs and arms. Semi-conscious, he kicks himself from the door into the water where he passes out. Then his heart and breathing stop.

The fates of the victims in the preceding instances look unfortunate indeed. But both are alive today, thanks to the quick thinking and lifesaving actions of two men — Tom Ashley and Charles Landrum — both GSU employees.

Ashley, a foreman in the Baton Rouge gas department, recently received the President's Life Saving Award from GSU President Norman Lee recognizing the February 15 rescue of the Baton Rouge youngster.

An 18-year GSU employee, Ashley tells the story like this:

"Phil and Mike Templeton and I were at my residence on Horseshoe Bend Road when we heard someone hollering next door. We went to see what was wrong and found the girl passed out on a gas

container made for a homemade dune buggy.

"We got her off the container and I gave her mouth-to-mouth resuscitation and called the fire department. By the time the fire department arrived, she had regained consciousness. She was given oxygen, then taken to Earl Long Hospital."

The girl completely recovered.

Landrum's lifesaving actions were much more recent.

The first-class lineman was returning from church on Sunday, October 29, following a pickup truck which was, in his words, "swerving all over the road." The truck crashed through a bridge guard rail and plummeted to the water below.

"When I got there (over the bridge), he was draped over the door, semi-conscious."

Landrum leaped from his car and ran down the bank to help the man, if he wasn't already beyond help.

"I really thought he would be dead," admits Landrum.

"As I was going down the bank, I was thinking 'how am I going to get him off that door.'" That problem solved itself, however, when the half-conscious man kicked himself off the door into the nearly three feet of water.

By the time Landrum reached the man he was unconscious. The victim had stopped breathing and no pulse could be felt.

Landrum immediately started heart massage and "after three or four pumps, he started breathing."

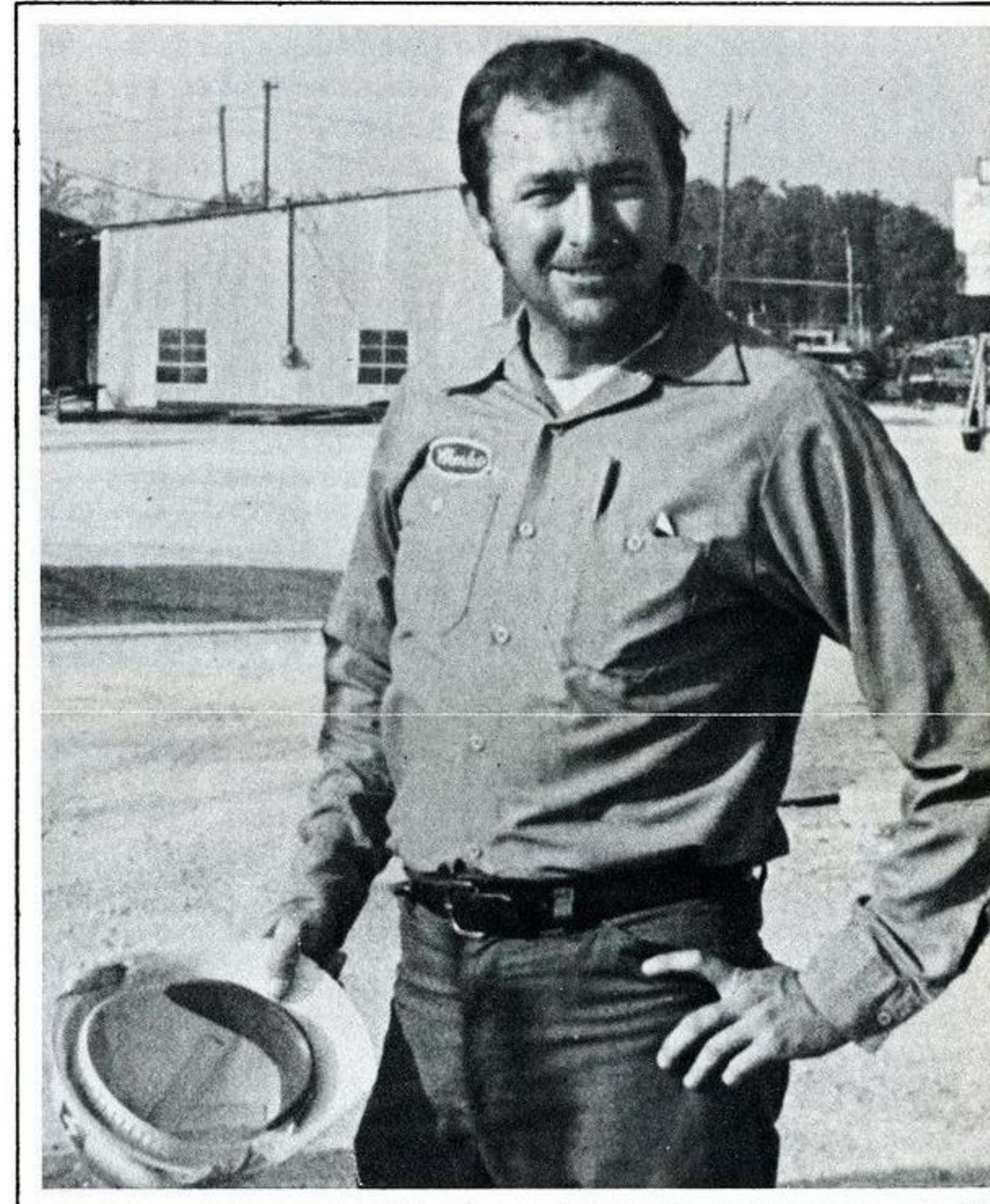
Some six or seven people had arrived at the scene by then and with their help, Landrum got the man up on the bank and started attending to his various injuries. The rescuers put splints on the man's right leg and arm and immobilized his head which Landrum says had "a knot on the side and a big gash on top."

"Surprisingly, the man never did go into shock," said Landrum, despite the 15 minutes it took for the ambulance to arrive. "I must have been standing in the water most of those 15 minutes," he jokes.

To prevent shock, Landrum and the others



Robert Stewart



Charles Landrum

covered the man with the only things available — two baby blankets, a sheet and four towels.

Fortunately for both victims, Landrum and Ashley have completed company-sponsored first aid courses. In fact, Landrum had completed a multi-media first aid class only a week and a half before the accident.

While most employees will never encounter situations similar to the ones described above, many routinely use the same cool thinking to avert what could be disaster.

On September 6, Robert Stewart, serviceman 1/c in Lake Charles, was driving to a service job when he noticed smoke coming from a street to the north.

"I did another job," said Stewart, "and came back five minutes later. By then smoke was coming from under the eaves and the house was burning badly."

Stewart immediately disconnected the electricity, primarily for the safety of the firemen.

Although Stewart considers the job routine, the homeowners were extremely grateful. "We feel that his quick action helped to save most of our home plus the contents," reads a letter the family wrote to Lake Charles division manager Bill Richard.

It's all a matter of getting involved.

—Gary Dias

Page One

GSU News

Beaumont division certifies NEW homebuilder

Hugh Haley, owner of Haley Homes in Lumberton, Tex., recently became the first homebuilder in the Beaumont division to be certified as a National Energy Watch (NEW) builder.

When it comes to energy efficiency in the home, not many people in the Golden Triangle area around Beaumont know more than Haley, who is recognized as the area's first and foremost builder of energy efficient homes. Haley has been in the home building business for more than 20 years but for the last three he has built only houses designed to be energy efficient.

"Occasionally, someone will want me to build them a home that's not energy efficient but it's usually very easy to talk them out of it."

A resident of Vidor, Haley is presently the local director of the Homebuilder's Association. He served as the state director last year.

Haley's concern about energy conservation and rising utility costs has led him to develop what he terms a "total energy package" with the aid of Herman Quinton of The Quinton Company, a local air conditioning and insulation firm.

"I'm constantly doing things to cut energy cost in the home," said Haley, adding that he concentrates on innovations which are "low cost and have a short payback period."

Insulated hot water lines in the attic rather than the ground, single handle faucets and water-saving commodes are just a few examples of the items Haley builds into his homes to save the buyer money on his utility bills.

Haley works closely with Gulf States Utilities Company in his efforts to build homes that are attractive as well as energy efficient. Virtually all of his new homes are certified as energy efficient by GSU under guidelines of the National Energy Watch (NEW) program. GSU officially adopted this national program of inspecting new and existing homes and certifying them as meeting a national set of standards several months ago.

According to Haley, there are other benefits to NEW certification in addition to the homeowner's assurance that his home meets national energy efficiency standards and is saving him money on his utility bills.

"The value of an NEW home will be appraised for

Murrill recognized

Newly elected GSU board member Paul W. Murrill, chancellor of Louisiana State University in Baton Rouge, was recently named one of America's 100 "most respected younger leaders in higher education" by *Change* magazine.

The principal criterion for selection was each candidate's influence on the direction of American higher education.

The American Council on Education's Office of Leadership assisted *Change*, which is published by the non-profit Council on Learning, in seeking nominees for the competition.

Murrill and Houston banking executive Nat S. Rogers were elected to the board effective October 1.

more money now," said Haley, "but as utility bills increase the benefits will become even more evident."

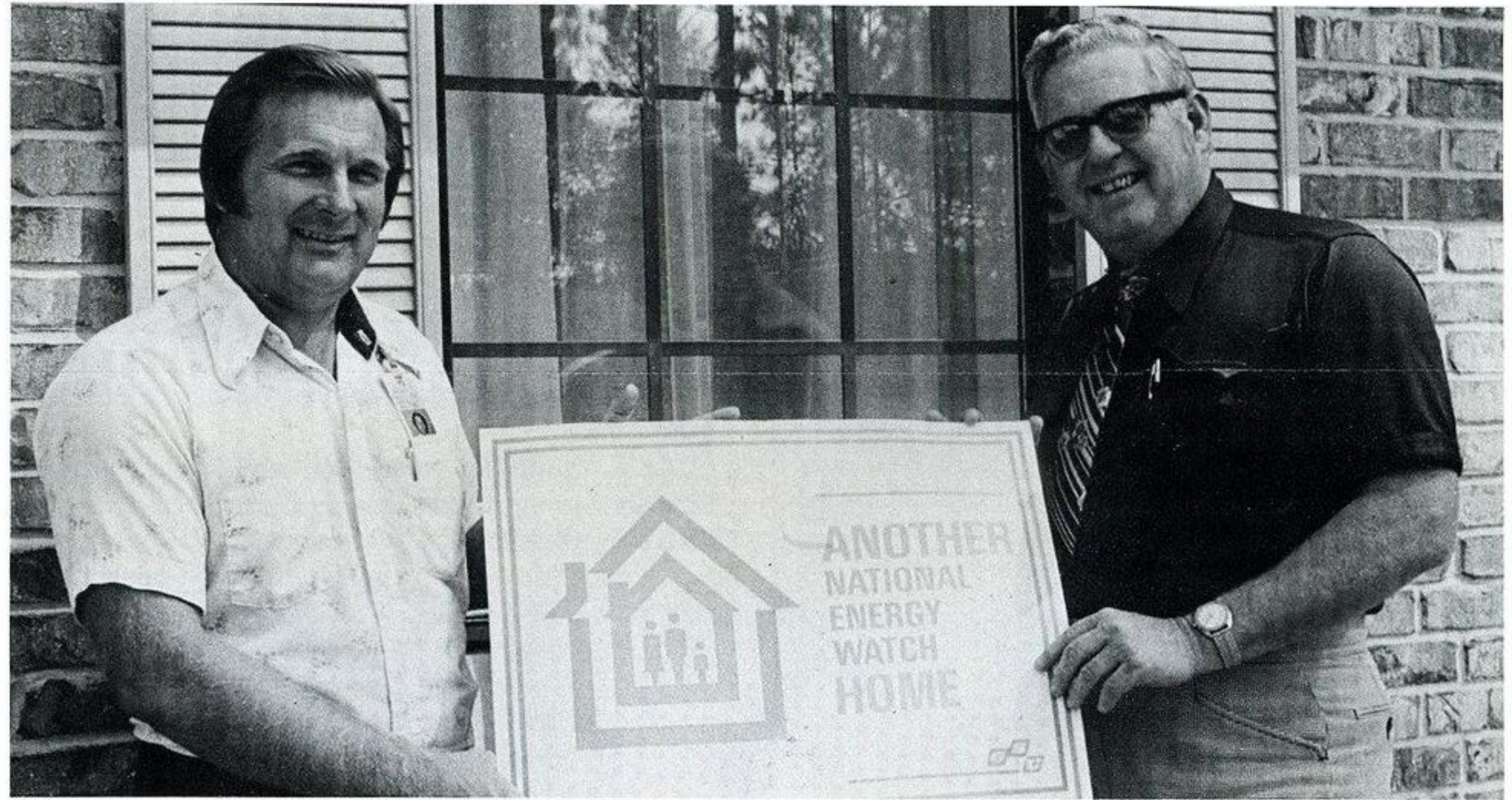
An NEW home is also quieter to live in because it is well sealed, he said.

In January, Haley completed a Thermal Storage Research home for GSU and Lamar, the main feature of which is a 1½-ton commercial chiller capable of storing 292 gallons of water or 2,430 pounds of ice. The chiller (compressor) freezes the air conditioning system's cooling water during off-peak hours (the late night and early morning) when the load on the GSU electrical system is minimal.

Other features of the home include double pane insulated glass in the windows and a roof overhang designed to reduce the cooling requirements caused by the sun's rays on the east and west exposure windows.

Whether he's out talking to a group of appraisers about the merits of NEW, supervising the construction of another energy efficient home or developing new energy-saving concepts, Haley keeps busy helping other people save energy and money.

While others sit back and complain about rising energy costs, Hugh Haley is doing more than complain. He's doing something about it.



ANOTHER HALEY HOME CERTIFIED — Gene Koci, GSU National Energy Watch representative, (left) certifies another Haley home as energy efficient. Haley (right) has built only energy efficient homes for the last three years.

New director heads GSU employee training section

The staff of the Personnel Department's Training Section has been strengthened recently by the employment of Don Zick, a veteran of some 20 years in the field of employee and management training, as director of training and development.

Zick is the man in charge of the expanding activities of the training group which include several new programs which are in the final stages of preparation. A number of other programs are in the planning stage.

"Any new programs will be based on input from employees and organizational needs," said Zick, emphasizing the importance of employee feedback in the development of training programs. "I encourage all employees to let me know their thoughts on training needs."

Zick had been manager of employee training and development for the University of Missouri's four-campus system for about ten years. Prior to that he was supervisor of technical training for Union Electric Company in St. Louis.

He earned his bachelor of science in business administration at the University of Missouri in 1956

and his master of science degree in extensive education from the same institution in 1972. Zick is nearing completion of work on his Ph.D degree in speech communication.

Zick has headed a number of training and development organizations, including the St. Louis and Central Missouri chapters of the American Society for Training and Development, the National Training and Development Council for the College and University Personnel Association and the Personnel Committee of the Columbia, Mo., chapter of the Administrative Management Society.

He also served as chairman of the Educational Institution Special Interest Committee of the national office of the American Society for Training and Development.

Although he is relatively new as GSU's director of training and development, Zick feels much has been accomplished by those responsible for existing activities. "The staff is very capable and with their support, I'm optimistic about what can be done at GSU in the future."



Conservancy representatives and other interested parties tour the scenic Sandylands.

40 acres donated

Company gift shows concern for nature

"Too often industry is thought to be 'anti-nature'. But we believe that what is good for the area is good for us too." — W. Donham Crawford.

As part of a campaign to aid the Roy E. Larsen Sandyland Sanctuary near Silsbee, Texas, a 40-acre tract of land was donated by GSU to The Nature Conservancy.

The donation of the tract, valued at more than \$40,000, is the initial gift to the sanctuary by the company. GSU is also planning an ecological research project that will provide \$20,000 to the preserve over the next five years.

Chairman of the Board W. Donham Crawford presented the deed to the land, originally meant for use as a right-of-way for a high-voltage line to a proposed power plant near the Toledo Bend reservoir, to Raymond M. Culter, a vice president for the non-profit Nature Conservancy, on Oct. 26.

In making the presentation, Crawford said the contribution is expected to play a significant role in the success of the Larsen sanctuary because the donated land will form a key area of the sanctuary vital to the preservation of the ecosystem as a whole.

"Future generations deserve both a variety of areas in their natural condition and a reasonably high standard of living. I believe both are possible," said Crawford.

"The responsibility of electric power companies to provide energy for their customers may sometimes create situations where environmental compromises must be made. This should not be considered an 'us' against 'them' world."

In accepting the land Culter said, "The Gulf States gift is important for two reasons. First, it will help protect the arid sandylands that make up the Roy E. Larsen Sanctuary, and second, this gift highlights our current effort to raise funds from industries, foundations, and private citizens to take care of the long-term needs of the preserve.

"In all the world there is no place like the sandylands of east Texas. Thank you, Gulf States, for your generous donation."

The Roy E. Larsen sanctuary is one of the most diverse regions located within the general area known as the Big Thicket. It is unique in that it contains the arid sandylands not included within the Big Thicket National Preserve.

The sanctuary is one of only 31 "model" preserves among the almost 700 natural areas owned by the privately supported, Washington-based Nature Conservancy. The area will be used for educational programs, nature study and research, and is open to "families that want to explore the natural world," says sanctuary manager Ike McWhorter.



Ray Culter, Conservancy vice president, comments on the GSU gift with Board Chairman Don Crawford in background.

Thrift Plan

Investments made by the Trustee during October, 1978 covering employee deductions and Company contributions through September, 1978 were as follows:

Purchase of Common Stock

Number of Shares	Total Cost	Average Cost Per Share
25,939	\$343,691.75	\$13.25

The Trustee also made the following deposits:

First Security National Bank of Beaumont \$121,796.66 Savings.

The Equitable Life Assurance Society \$36,823.37 Guaranteed Fixed Income Fund.

Boerger, Serwin join company

Two additional managerial-level posts have recently been created at GSU over the areas of fuel acquisition and power plant construction.

Joining the company on Oct. 12 as general manager-power projects was Philip T. Boerger, a former Army brigadier general with 32 years of service in executive, administrative and engineering positions in the United States, Korea, Vietnam and Iran.

Edward J. Serwin came to GSU as manager-fuel services on Nov. 1, after serving at BASF-Wyandotte's facilities in Geismar, La.

A native of Milbanks, S.D., Boerger is a graduate of West Point. He also has a master's degree in civil engineering from the University of Minnesota and a master's degree in international affairs from George Washington University.

For the last three years, Boerger has served as project executive-international for Giffels

Associates, Inc. an architectural-engineering firm in Southfield, Mich.

As general manager-power projects, Boerger has responsibilities encompassing the River Bend and Nelson Coal projects and Project Services.

Boerger and his wife Betty have a son and a daughter.

Serwin's last position at BASF-Wyandotte was manager-corporate environmental protection. He has also served the firm as works manager at the Geismar facility.

He holds a bachelor of science degree in chemistry from St. Louis University.

Serwin's new duties center around the acquisition of oil, gas, nuclear and coal fuels for GSU.

He and his wife, Jane Rita, have four sons and a daughter and, in Serwin's words, "call Baton Rouge home."

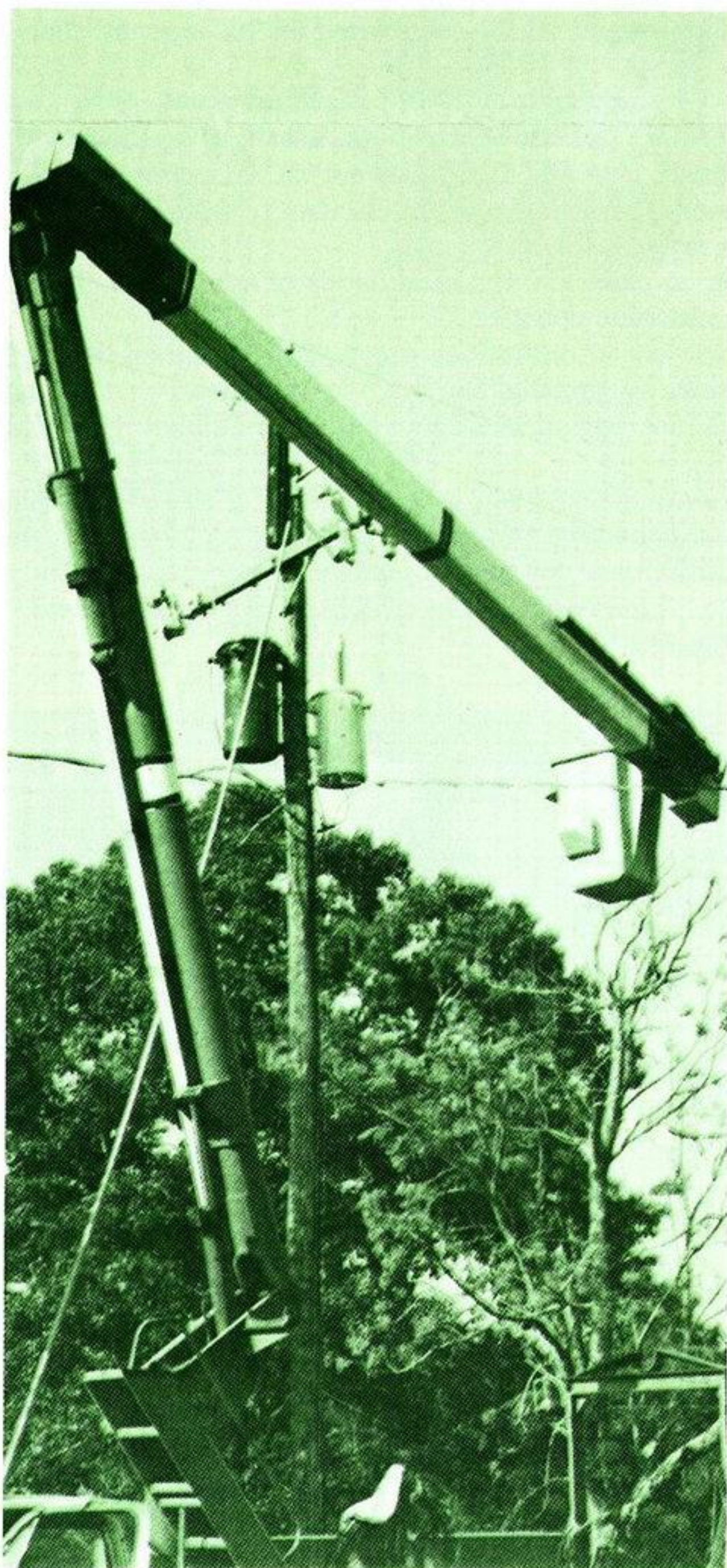


Philip T. Boerger



Edward J. Serwin

Crews upgrade Colmesneil system



Getting a better view

An army of eight GSU crews invaded Colmesneil, Tex., November 1 to convert part of the town's 2.4 Kv distribution system to 34.5 Kv.

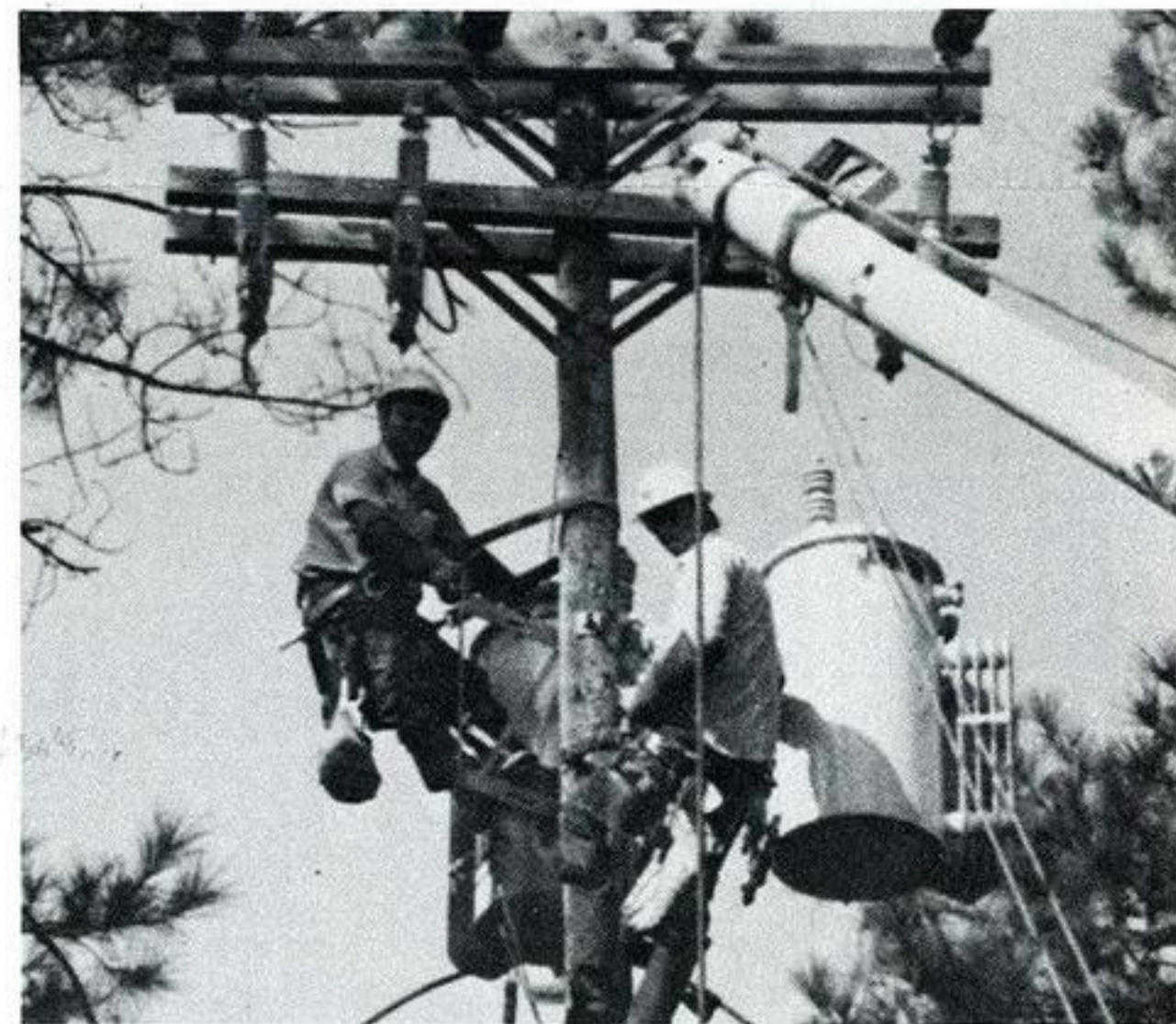
The project was completed in less than three hours and approximately 60 percent of the customers were back in service within an hour.

The \$115,000 project was undertaken in an effort to provide better and more reliable electric service to Colmesneil area residents.

The conversion was coordinated by radio with Buddy Jackson, and David Solis directing the crews. Most of the preliminary work was done by Woodville line foremen D. T. Pate and C. E. Wilson. Mike Fancher did the engineering work on the project.

The completion of the conversion was the fulfillment of a 12-year dream for Woodville district superintendent Wyatt Bell.

—Carolyn Motl



Linemen work on conversion

EPRI tests find 'liquid coal' acceptable

Preliminary results of the nation's first large-scale combustion demonstration with a synthetic liquid made from coal indicate that performance and emissions characteristics are generally comparable to the low-sulfur oil normally burned in electric utility boilers.

The Electric Power Research Institute (EPRI) reported recently that some 4500 barrels of the low-ash, low-sulfur fuel, called solvent-refined coal distillate (SRC-II), were recently burned at the Consolidated Edison Co. of New York, Inc., 74th Street generating station in Manhattan. The burn was part of an engineering and emissions assessment of SRC-II sponsored by EPRI and Con Edison in cooperation with the U. S. Department of Energy (DOE).

EPRI, supported by more than 500 of the nation's electric utilities, including GSU, funds and manages electric energy research and development.

According to EPRI Project Manager Dr. William Rovesti, this program is helping direct the research and development efforts of government and in-

dustry to reduce the nation's dependence on imported oil by identifying alternative fuels.

Early demonstration data indicate that the level of nitrogen oxide emissions measured during the combustion of SRC-II would readily meet the standard for coal-derived liquid fuels proposed last month by the U. S. Environmental Protection Agency. In addition, boiler efficiencies recorded in burning SRC-II were comparable to those obtained with regular fuel oil.

Further data assessment studies are being conducted by KVB, Inc., of Tustin, California, an independent engineering organization under contract to EPRI. KVB is preparing a report that will analyze results of the test program.

The SRC-II process is a direct coal liquefaction process in which a coal-derived solvent and hydrogen react with coal to transform it into a solids-containing liquid product, which is then distilled and condensed into a liquid fuel.

On The Move

ABSHIRE, MARK K., Pt. Arthur, Equipment Operator, Sabine Station, promoted to Control Operations Foreman.

ATKINS, ANNA J., Bmt., promoted to Engineer's helper—Prov.—Engineering Design/Engineering Services—Sched.

ATKINS, JAMES W., Bmt., Engineering Manager, named Manager-Professional Recruiting.

ATWELL, WILLIAM D., L. Charles, Equipment Operator, Nelson Station, promoted to Control Operations Foreman.

BANKS, RICHARD, B. Rouge, promoted to Repairman Second Class, La. Station—Mech.

BARNES, PAUL D., B. Rouge, promoted to Meterman Second Class—T&D/Meter.

BATES, DENNIS M., B. Rouge, promoted to Apprentice—T&D/Substation.

BENOIT, BRENDA L., Pt. Arthur, Departmental Clerk, Sabine Station, promoted to Stenographer-Executive.

BERGER, ERVIN W., Bmt., Supervisor-Plant Accounting, promoted to Director-Plant Accounting.

BOURGOIS, STEPHEN P., B. Rouge, promoted to Apprentice—T&D/Line.

BOURQUE, GREGORY W., B. Rouge, promoted to Mechanic's Helper, Willow Glen—Mech.

BRASWELL, JAMES L., Bmt., Controller, named Manager-Administrative Services.

BRÄWNE, RICHARD L., B. Rouge, promoted to Master Electrician, Willow Glen—Elect.

BURGE, BILLY W., L. Charles, promoted to Master Electrician, Willow Glen—Elect.

BURGE, BILLY W., L. Charles, Equipment Operator, Nelson Station, promoted to Control Operations Foreman.

BUSHNELL, VAN A., L. Charles, Equipment Operator, Nelson Station, promoted to Control Operations Foreman.

CALDWELL, MARTHA F., L. Charles, Departmental Clerk, Nelson Station, promoted to Stenographer Executive.

CARTER, DAVID G., Bmt., promoted to Apprentice—T&D/Line.

COLLIER, JOSIAH B., B. Rouge, promoted to Repairman Second Class, La. Station—Mech.

CONDON, GERALD R., Bmt., promoted to Engineer's Assistant—System Operations—Building Design.

DEMPSEY, WILBUR R., B. Rouge, promoted to Mechanical Maintenance Foreman.

DOTSON, WILLIAM A., L. Charles, Senior Engineering Assistant, T&D Engineering, promoted to Section Head.

DOUCET, CURTIS W., L. Charles, Control Operations Foreman, Nelson Station, promoted to Shift Supervisor.

DOUGET, CLAUDE H., Pt. Arthur, Control Operations Foreman, Sabine Station, promoted to Shift Supervisor.

DUMAS, DAN G., Pt. Arthur, Control Operations Foreman, Sabine Station, promoted to Shift Supervisor.

ENGELBRECHT, FRANCES S., Bmt., Coordinator-Personnel Development, Personnel Services, promoted to Coordinator-Operations Training.

EXNER, BENJAMIN F., B. Rouge, Contract Construction Inspector, System Operations, Transmission Construction, promoted to Chief Construction Inspector.

FONTENOT, JOHN C., Bmt., Engineer, T&D Engineering, transferred to System Engineering, Transmission Planning.

FOUNTAIN, MICHAEL O., B. Rouge, promoted to Apprentice—T&D/Substation.

FREDERICK, BILLY E., Orange, promoted to Lineman Fourth Class—T&D/Line.

GARNER, EARL H., Pt. Arthur, Control Operations Foreman, Sabine Station, promoted to Shift Supervisor.

GRADNIGO, LOUIS, L. Charles, promoted to Truckdriver—T&D/Line.

GREMILLION, GRADY J., L. Charles, promoted to Lineman Second Class—T&D/Line.

GUTHRIE, LEWIS C., Bmt., Director-Engineering Design, promoted to Engineering Manager.

HALE, RONALD D., Conroe, Claims Representative, transferred to Legal Services, Beaumont, and promoted to Claims Coordinator.

HARRELL, RICHARD W., Bmt., promoted to Equipment Operator, Neches Station—Operations.

HARRIS, GAIL L., Pt. Arthur, Stenographer-Senior, Division Accounting, transferred to T&D Operations and promoted to Stenographer-Executive.

HEBERT, RICHARD P., B. Rouge, Senior Engineering Assistant, Gas, transferred to General Services, River Bend Station, and promoted to Section Head.

HERNANDEZ, DAVID S., Bmt., Training Representative, Personnel Services, Skills Training, promoted to Coordinator-Skills Training.

HILL, ROBERT F., Pt. Arthur, promoted to Master Electrician, Sabine Station—Elect.

HOFFPAUIR, KENNETH R., Pt. Arthur, Control Operations Foreman, Sabine Station, promoted to Shift Supervisor.

HOOPER, TOMMY D., L. Charles, promoted to Repairman 2/c, Nelson Station, Mech.

HOPPER, WILLIAM G., Bmt., promoted to Engineering Assistant—T&D/Engineering.

JACKSON, EMERY J., B. Rouge, promoted to Auxiliary Operator, La. Station—Operations.

JOHNSON, DONALD R., Conroe, promoted to Meterman 2/c—T&D/Meter.

JOHNSON, WILLIAM JR., B. Rouge, promoted to Apprentice—T&D/Line.

JONES, CHARLES D., Conroe, promoted to Apprentice—T&D/Line.

KENNISON, RAYNARD J., L. Charles, promoted to Repairman 2/c, Nelson Station, Mech.

KINGHAM, MARK W., L. Charles, Control Operations Foreman, Nelson Station, promoted to Shift Supervisor.

LAFLEUR, COLLINS D., L. Charles, Equipment Operator, Nelson Station, promoted to Control Operations Foreman.

LANDAICHE, DORA T., B. Rouge, Departmental Clerk, Willow Glen Station, promoted to Stenographer—Executive.

LeBLANC, TOMMY C., Bmt., promoted to Garage Mechanic's Helper—T&D/Garage.

LE JEUNE, JOSEPH C., L. Charles, promoted to Repairman 2/c, Nelson Station, Mech.

LONG, JOHN R., Bmt., Director-Internal Audits, promoted to Manager-Internal Audits.

MANSFIELD, MARY Q., Bmt., Stenographer, General Services, promoted to Section Head, Stenographic Section.

MARINO, BUNNIE R., B. Rouge, promoted to Stenographer-Senior—Division Accounting/Overall.

MARTI, BOBBY L., L. Charles, Equipment Operator, Nelson Station, promoted to Control Operations Foreman.

McNEIL, ODEA V., Pt. Arthur, Control Operations Foreman, Sabine Station, promoted to Shift Supervisor.

MISURACA, VINCENT J., B. Rouge, Party Chief, T&D Engineering, promoted to Division Surveyor.

MORRIS, CLIFFORD J., L. Charles, Assistant Purchasing Agent, Material Services, Nelson Station, promoted to Purchasing Agent.

MURPHY, GARY C., Silsbee, promoted to Meter Reader—Division Accounting/Customer Accounts.

NEY, HAROLD L., L. Charles, Control Operations Foreman, Nelson Station, promoted to Shift Supervisor.

PATE, JOSEPH D., Bmt., promoted to Senior Engineering Assistant—Trans. Plnng.

PAYNE, MICHAEL E., Bmt., promoted to Apprentice—T&D/Line.

PERRY, ROGER D., Bmt., Senior Budget Analyst, Financial Services, transferred to Accounting Services as Senior Administrative Accountant.

POHL, ROBERT H., Bmt., Engineer, Transmission Planning, transferred to T&D Engineering, Lake Charles and promoted to Division Engineer.

POTTER, HARRY H. III., Bmt., promoted to Apprentice—T&D/Line.

PRATT, EVERETT S., L. Charles, Control Operations Foreman, Nelson Station, promoted to Shift Supervisor.

ROBIN, JOHN R., Lafayette, promoted to Senior Engineering Assistant—T&D/Engineering.

ROBLIN, THOMAS A., Bmt., Senior Construction Representative, Power Plant Engineering and Design, promoted to Supervisor-Special Projects.

RUTLEDGE, CALVIN A., Pt. Arthur, Equipment Operator, Sabine Station, promoted to Control Operations Foreman.

SANDERS, KEITH C., Pt. Arthur, Equipment Operator, Sabine Station, promoted to Control Operations Foreman.

SHORES, MICHAEL G., Pt. Arthur, Equipment Operator, Sabine Station, promoted to Control Operations Foreman.

SMITH, DERRICK D., L. Charles, Control Operations Foreman, Nelson Station, promoted to Shift Supervisor.

SMITH, MORRIS JR., Bmt., promoted to Apprentice—T&D/Substation.

SPRAGUE, SHARON B., Bmt., promoted to Engineering Helper-Prov.—Engineering Design/DEC-Drafting.

STEWART, OLICE A., Bmt., Director-Risk Management, promoted to Manager-Risk Management Services.

STURGEON, CLAUDE R., B. Rouge, promoted to Garage Mechanic 2/c—T&D/Garage.

SUMMERS, TIMOTHY L., Bmt., promoted to Apprentice—T&D/Line.

TRIPLETT, ELEANOR J., Bmt., Director-Payroll Administration, promoted to Director-Disbursement Accounting.

VESSIER, DONALD K., B. Rouge, promoted to Lineman 1/c—T&D/Line.

WALKER, ELIZABETH G., Bmt., promoted to Engineering Helper-Prod.-Prov.—System Production/Overall.

WALTERS, FLOYD E., Pt. Arthur, Equipment Operator, Sabine Station, promoted to Control Operations Foreman.

WELCH, BARBARA M., Conroe, promoted to Senior Clerk—Division Accounting/Customer Accounts.

WHEELER, DEBORAH B., Bmt., Stenographer, Rates and Economic Analysis, promoted to Secretary-Executive.

WHIDDON, THOMAS T., Bmt., Salary Administrator, promoted to Manager-Compensation Services.

WILLIAMS, JOSEPH, Pt. Arthur, Repairman 1/c, promoted to Mechanical Maintenance Foreman.

WILLIS, BOBBY J., Bmt., Director-Financial Accounting, promoted to Manager-Accounting Services.

YOUNG, BERTELL, B. Rouge, promoted to Meter Reader—Division Accounting/Cust.



INSPECTION VEHICLE—The above truck is the first in the GSU system intended for exclusive use by the company's National Energy Watch representatives. Used by Beaumont division inspectors, the truck is painted with NEW and GSU insignia and has a camper shell for storing ladders and other necessary inspection equipment. Two additional trucks are on order.

Service Awards



Curtis W. Doucet
Division Production
Lake Charles
40 Years



Victor R. Norvell
Marketing Dept.
Conroe
30 Years



Lester C. Boudreaux
Electric T&D Dept.
Port Arthur
30 Years



Perry E. Sanderson
Electric T&D Dept.
Beaumont
30 Years



Charlotte J. Bass
Accounting Dept.
Beaumont
30 Years



Cecil D. Gayle
Electric T&D Dept.
Conroe
30 Years



Carl T. Grimmert
Electric T&D Dept.
Lake Charles
30 Years



Quincy R. Hollis
Material Servs. Dept.
Beaumont
30 Years



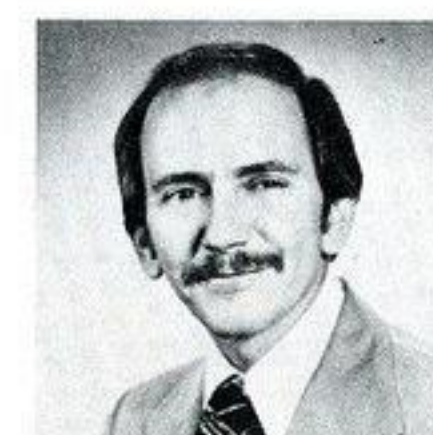
James R. Banks
Accounting Dept.
Baton Rouge
30 Years



Jimmie Smith
Division Production
Beaumont
30 Years



Ronald L. Steptoe
Electric T&D Dept.
Beaumont
10 Years

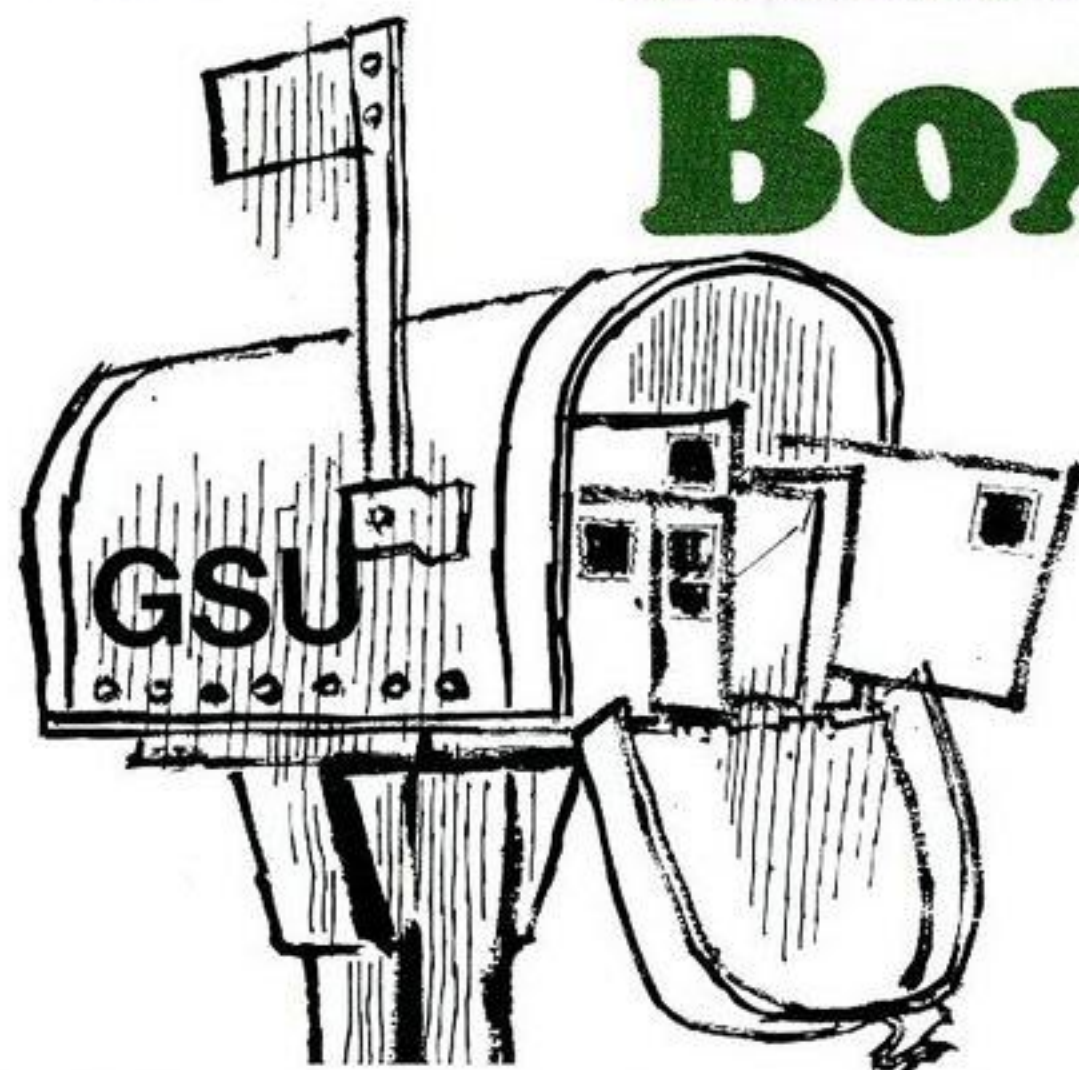


Luther M. Arnette
Electric T&D Dept.
Baton Rouge
10 Years



Juanita N. Holmes
Information & Data
Beaumont
10 Years

Mail Box



Mr. William E. Richard, Division Manager
Gulf States Utilities Company
314 Broad Street
Lake Charles, LA 70601

Dear Bill:

On behalf of McNeese State University, and most particularly its resident married students, I want to thank you and Gulf States Utilities, especially Messrs. Jim Richardson, J. Charles Upton, and Dudley Clark, for the expeditious manner in which the emergency (which arose during the reconstruction of the paving at the intersection of McNeese and Common Streets) was handled. As you may or may not know, the line serving the McNeese Pine Haven Apartments was accidentally exposed and damaged. Your company was able to provide new service, which involved the use of two line-crews on an emergency basis for a two and one-half day period, and only resulted in a power outage of approximately two hours to these apartment units.

A company such as yours is too frequently criticized adversely for complaints real and imagin-

ed, and not complimented when outstanding and extraordinary services are rendered. Therefore, I again thank you and GSU for a job very well done. If there is any way in which I or the University can reciprocate, please let me know.

Sincerely,

Thomas S. Leary, PhD, PE
President
McNeese State University

Mr. Jim Turner
Gulf States Utilities Company
P. O. Box 2951
Beaumont, Texas

Dear Jim:

Gulf States Utilities most generous contribution of \$800 for Leadership Lamar has been received.

Thank you!

And please thank your entire corporate family for this latest gift to help promote excellence at Lamar. Hopefully we will be able to provide you with a good report on the many significant aspects of this important student conference.

Again Jim, thanks to you personally and to all our friends at GSU.

Cordially,

W. S. "Bud" Leonard
Vice president for University Relations
Lamar University

Mr. Billy Creel
Energy Information Coordinator
Gulf States Utilities Company
P. O. Box 2951
Beaumont, TX

Dear Mr. Creel,

Thank you so much for speaking to our Community Issues Study Group on Wednesday, September 20. We thoroughly enjoyed the Gulf States filmstrip

and we learned many new facts from it and from your informative discussion on home energy conservation. We were unaware of the many little things we could easily do to conserve our own energy consumption. The booklets you left us were deeply appreciated. I have been passing the extra leaflets around to other A.A.U.W. members and interested friends and neighbors.

Thank you again for taking time from your busy schedule to talk to us.

Sincerely,

Madeline Miller
Community Issues Group chairman
Beaumont Branch, American
Association of University Women

Classified Corner

HAM RADIO EQUIPMENT— Good quality equipment for someone to get started in an enjoyable hobby. Heathkit equipment. DX 60-B transmitter and VFO \$120. HR-1680 solid state receiver \$180. Chris Fite, Bmt. X586.

FOR SALE—1974 Toyota Truck. 4-speed, radio, good tires, deluxe bumper. Tom Clark, Pt. Arthur X271. Home phone-962-0309.

WANTED TO BUY—Early American sofa or loveseat, brown or green and in good condition. Dennis Wales, Bmt. X497.

FOR SALE—1977 Glastron, 85 Johnson with trim tilt, built in tank, boat cover and trailer. Silver metalflake. Donna Derise, Orange. X47.

FISHING—Fishing at Sabine Station will not be permitted between 7:15 a.m. and 4 p.m. on weekdays. Off-duty employees will be permitted to fish between sunrise and sunset outside of this period. Hard hats are required and vehicles not permitted inside of the plant. ID is necessary to enter plant. Jim Moss, plant Supt.

If there's something you want to buy, sell, trade, give away or otherwise advertise, just jot down the information along with your name and extension number and send it to PLAIN TALKS editor, Beaumont. Sorry, but no ads of an employment or commercial nature will be published.

Inside GSU



The Beaumont Live Wires Club held its annual Halloween party for members' children at the group's campground October 28. Winners of the costume contest were, from left, Kevin Joyner, (most original), Lee Strother (best boy's costume) and Elizabeth Hollingsworth (best girl's costume).



Richard Hill, son of Jeanette and Bobby Hill celebrated his first birthday November 8 with a cake and all the trimmings. Bobby is employed in the Conroe Meter Department (from Frances Elliot)



New Caney serviceman Otis Boles and wife Annette are the proud parents of this new baby boy, Quinton Otis Boles, born September 22. (from Dianna Winkelmann)



Sabine Station employees contributed a record \$5,175 to the 1979 Orange County United Fund. Employees who worked in the campaign were Rodney Townsend and Richard Guyote, co-chairman, and Tommy Weir, Floyd Hebert, Bill Moore, Keith Sanders, Lynn McDaniel, Steve Sartin, Mike Shores, Abie Stough and Fred Kressman, captains. Townsend, Guyote and Stough are shown above presenting the contributions to Paul Pearson, executive director of the Orange County United Fund, far left. (from J. E. Moss)



Hal Tierney, supervisor-budgeting and reporting, is shown above being congratulated by the new president of the National Association of Accountants, upon his election to a two year term (1978-80) as a national director. The NAA is the world's largest accounting organization.



Jo Larson, senior stenographer, Financial Services—Budget Department, Beaumont, was recently honored at a going-away party before resigning to assume the role of fulltime housewife and mother. The "typewriter cake" was made by Janet Yakubovskiy. (from Gloria Sneed)



The Gulf States Side Liners recently held a "get together" at the R. J.'s Seafood Restaurant in Lake Arthur, La. Pictured above are the two oldest members of the club, J. H. Connelly, 92, on the left, and S. J. (Pop) Guidry, 81, on the right. (from Jo Ann Burnett)

Babin, Pollans named to civic leadership posts

Harriet Babin, supervisor-consumer information services for the Baton Rouge division, has been named chairman of the Baton Rouge Area Chamber of Commerce's Education Committee.

The Dutchtown, La., native formerly served as chairman of the chamber's Business-Profession Teaching Day.

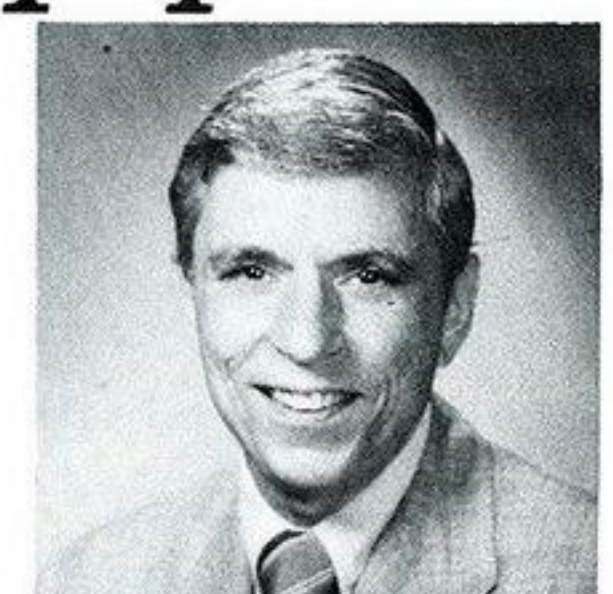
Babin holds two degree from Louisiana State University, a bachelor's degree in vocational home economics education and a master's in home economics, family life/home management.



Harriet Babin

Al Pollans, vice president-accounting services, has been elected to serve on the Board of Trustees of the Beaumont Art Museum for a three-year term, ending in 1981.

Gulf States has long been a supporter and corporate member of the museum and a number of GSU employees have served on the board and assisted in many areas of Kaleidoscope, the annual arts and crafts festival held on the grounds of the museum each year.



Al Pollans

Bulk Rate
U. S. POSTAGE PAID
Beaumont, Texas
Permit No. 11



If
not
you,
who?



A Public Service of This Magazine & The Advertising Council

*Published monthly for employees and annuitants of Gulf States Utilities Company. Produced within the Public Affairs Department, Fred C. Rep-
per, vice president, by the Communications Department, James S. Turner, manager. Editor-Gary Dias, Contributing editor-Rick Harvin, Artist-
Ken Haynie. Address all communications, to Editor, PLAIN TALKS, Gulf States Utilities Company, P. O. Box 2951, Beaumont, Texas 77704.
Phone (713) 838-6631.*