

PLAIN TALKS

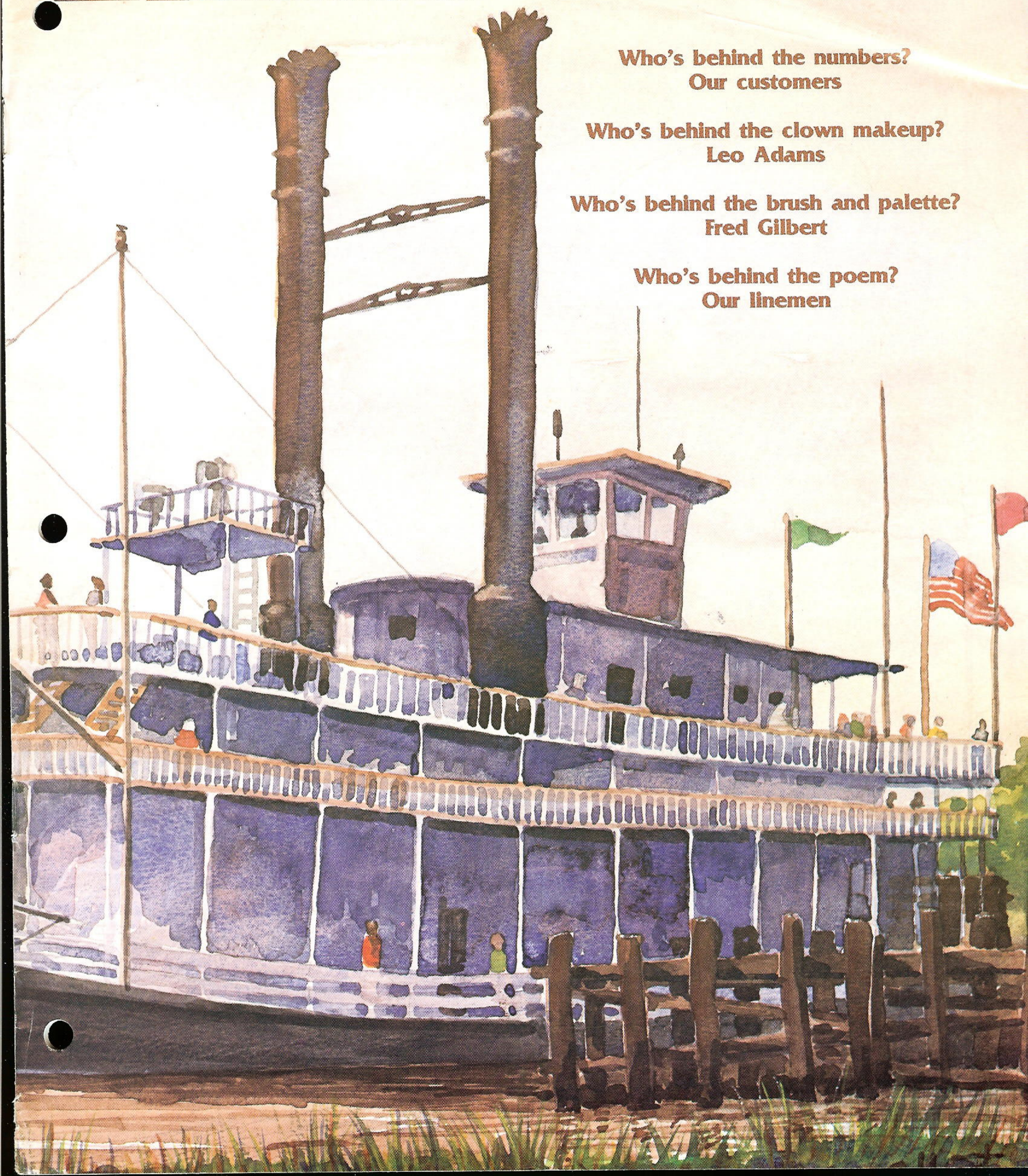
October
1983

Who's behind the numbers?
Our customers

Who's behind the clown makeup?
Leo Adams

Who's behind the brush and palette?
Fred Gilbert

Who's behind the poem?
Our linemen



MAIL BOX

THE COVER

A Mississippi River scene from the past comes to life with Fred Gilbert's paintbrushes.

The Baton Rouge security representative paints for pleasure, but his paintings have attracted local buyers.

Read more about Gilbert's hobby on page 10.

Walter F. Wright, Superintendent
GSU/Port Allen, La.

Dear Mr. Wright,

I would like to express my deepest appreciation for all the effort put forth by your company during the construction of the addition to the Port Allen Nursing Center. Everyone connected with Gulf States Utilities, from your district representative, Mr. Philip Marquette, to the office workers, was most courteous and helpful during every phase of the construction.

Working with you has been a great pleasure.

Very truly yours,

W. T. Lee

W. T. Lee Construction Company
Monroe, La.

Don Perio
GSU/Port Arthur

Recently I had a problem with my monthly bill and also with my parent's bill. I went to your office and discussed the two bills with Ms. Debbie Peron at length. I want to personally thank Ms. Peron for the most efficient and courteous manner in which she handled both accounts.

Your firm should certainly be proud of her representation. Again, my sincerest thanks to Ms. Peron for her excellent services rendered.

Sincerely,

Mrs. Leroy Wilson

Charles Glass
GSU
Beaumont, Texas

Dear Mr. Glass:

On Aug. 3, the electric power to my house was interrupted by a wayward branch, which fell and pulled the feed wires loose at the pole. I called Gulf States about 4:30, and by 5:30, Mr. Red Harrell had arrived; the problem was solved within 15 minutes.

Not only was the service restored, but Mr. Harrell also checked the other connectors, found several potential trouble spots and promised to have a crew out within a week to take care of them.

Please convey my thanks to Mr. Harrell and to his supervisors. He was efficient, pleasant and quite willing to answer my questions. Mr. Harrell is an outstanding representative of Gulf States.

It is, as you know, quite easy to get angry at large corporations, particularly when their services are as necessary as Gulf States' are, and when an interruption in service produces inconvenience and discomfort. Men like Mr. Harrell cannot only counteract this tendency, but can also produce a positive public image. He is an excellent representative of Gulf States, and I know that you are aware of his value.

Again, my thanks to your service department, and especially to Mr. Harrell for his help and courtesy.

Sincerely,

Howell H. Gwin Jr.
Professor and Director
of Graduate Studies
Lamar University

Editor's Note: Martin L. "Red" Harrell is a serviceman-1st class based at the Beaumont Service Center. The satisfied customer addressed his comments to Charles Glass, vice president of Texas operations.

PLAIN TALKS

Volume 62
October 1983

Number 9

Published for employees and retirees of Gulf States Utilities Company. Address all communications to PLAIN TALKS, Gulf States Utilities Company, P. O. Box 2951, Beaumont, Texas 77704, Phone (409) 838-6631.

Executive Editor:

Betty Gavora

Co-Editors:

Susan Huff Gilley

T. J. Reyes

Correspondents:

Dona Austin
Adelaide Bankston
Michael W. Bergeron
Barbara Broussard
Myra Castello
Kathleen Chelette
Bonnie Duval
Connie Herford
Les Jones
Helen Kennedy
Earl Landry
Edith Patterson
Myra Ponthier
Kitty Prouse
Casey Richert
Mike Rodgers
D. W. Rutherford
Sheila Soileau
David Thornhill
Nina Wiley
Robbie Zeringue

Employees who change residences or offices should fill out company mailing-address-change forms (GSU0012-00-81) and return them to the mailroom in the Edison Plaza. GSU publications, departmental mailings and other company information are not automatically forwarded; addresses must be corrected when employees move.

CONTENTS

PLAIN TALKS

Features:

Toledo Bend Hydro: GSU's jewel

5

Water and electricity mix

Portrait of a GSU artist

6

Fred Gilbert's art travels the world

Accident shows value of safety glasses

7

Shattered specs, safe eyes for M. L. Hooper

Allen English: Port Arthur's problem-solver

8

Work challenges spark employee

Hurricane Alicia

9

Storm tears through Texas

Customer study — what's behind the numbers?

10

Figures help determine corporate strategy

River Bend open house

14

Employees tour nuclear construction site

GSU's handy man

15

Terry Melancon's know-how saves money

Clowning around with Leo Adams

18

A day in the life of a clown

Departments

- 4** News Briefs — Reports of company events
- 12** On the Move — Recent job changes
- 16** Inside GSU — McClusky rides, Sabine roasts
- 19** Service Awards — Recognition of employees

Network keeps news flowing

A Consumer Information Network in Baton Rouge Division utilizes the telephone to brief employees about fast-breaking company news.

Karen Yates, consumer information coordinator, was tapped last April as the person to place the calls and pass on important information. She calls about 30 employees at various Baton Rouge Division locations, who, in turn, spread the word to their co-workers.

The information originates from sources in System Marketing & Consumer Services, the Baton Rouge Public Affairs office and from Division Vice President Jim Moss.

Yates explains that Marketing & Consumer Services implemented the network partly because employees in that department are so "visible." According to Yates, "We're out putting on programs in schools and before clubs, and we're often asked about company-related news that has hit the media. We saw a real need to set up a network so employees could be informed quickly and accurately."

Even so, the network informs employees from all departments, Yates add.



Helping to spread important news are (from left) Don Hamilton, Louisiana Station superintendent, and Lisa Gibson, engineering helper in production.

Examples of briefing topics include the announcement of Martin Goland's appointment to the board of directors and news of the rate increase filing in Louisiana.

To reinforce the telephone contact, Yates and the persons she calls post the messages on bulletin boards.

Similar communications programs are being implemented in the remaining four divisions of the company, reports Bill Brooks, supervisor-community and institutional programs.

Mack dies in Lake Charles

Howard E. Mack, 58, of Lake Charles died April 27.

He was a 32-year employee of Gulf States, whose last position was that of operating superintendent-T&D operations, Lake Charles.

Survivors include his wife, Delpha Mack of Lake Charles; two sons, James Mack and Jeffrey R. Mack, both of Lake Charles; one brother, Robert Mack of Lake Charles; and one sister, Mrs. Malcolm Williams of Beaumont.

Customer installs wind generator

A customer who lives near Dayton installed the first customer-owned wind generator in the GSU service area on July 26. The unit produced 67 kilowatthours in 30 days spanning the period July 26 through Sept. 5. During this period, it was out of service for 12 days following Hurricane Alicia.

A second wind generator will be installed by an Anahuac customer this fall, reports Dennis Dawsey, industrial engineer for the Beaumont Division.

According to Dawsey, the Dayton wind generator is designed to produce 15 kilowatts

in a 28-mile-per-hour wind. The owner paid \$500 for an idled oil well drilling derrick to use as the machine's platform. It is mounted 150 feet above the ground. A recent article in a Houston newspaper stated that the Dayton generator is the tallest windmill in Texas.

Total installed cost was about \$28,000. GSU will purchase the excess energy, but the customer pays a \$12.35 monthly service charge for meter requirements.

The Anahuac unit, which has been purchased but not installed, is manufactured by the same company, but is designed to produce 17.5 kilowatts in a 28-mile-per-hour wind.

School earns conservation award

Phil Waller, Gulf States forester, presented a Gold Leaf Award to the Bingman Elementary School in Beaumont at the end of August. The Gold Leaf is the highest award given in the state honoring outstanding Arbor Day activities and was presented by the Texas chapter of the International Society of Arboriculture.

As an energy conservation project, trees were planted near classrooms to provide shade during the hot months. The assignment was expanded when students and teachers decided to plant more trees and turn the area into a nature walk extending from the school to a picnic area. Bingman was singled out for the creativity of the project.

Waller, who presented the award during a special assembly at the school, is a member of the Society of Arboriculture and served on the panel which selected the Bingman School for the honor.

GSU's 'jewel'

by Susan Gilley

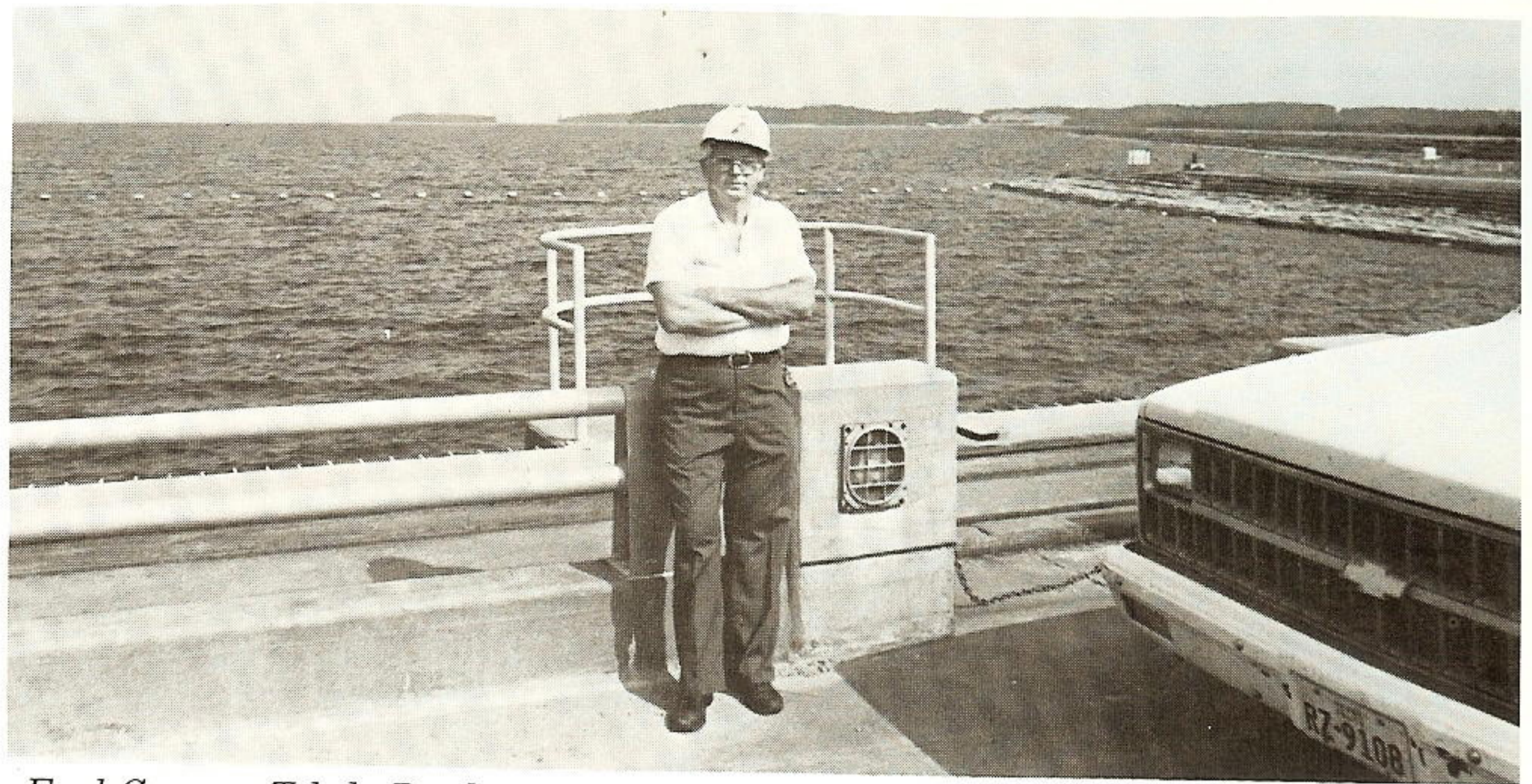
At the pine-shaded border of Louisiana and Texas lies the Toledo Bend Hydro Plant.

For the past 13 years, the plant's two 40-megawatt, water-powered units have steadily produced electricity.

Earl Garner, supervisor of the three-person facility since 1981, calls it a "jewel," pointing out that the units can be put in service and brought to full load in less than 10 minutes, making them extremely valuable as peaking units. "We don't have to worry about gas and coal supplies," he adds.

Although the Toledo Bend generating station is the only hydro-electric plant operated by Gulf States, it is owned by the Texas and Louisiana Sabine River authorities.

The two river authorities cooperated with GSU, Louisiana Power & Light and Central Louisiana Electric Co. to create the reservoir, dam and generating complex. Under an agreement, GSU operates and maintains the plant and receives half the power. The remaining half is divided between LP&L and CLECO.



Earl Garner, Toledo Bend superintendent, surveys the waters that power the plant.

Garner reports that he stays busy throughout the school year taking youngsters through the plant. He provides brochures explaining this process:

- Water from the reservoir enters the intake through the open intake gates.

- The water flows down the power tunnel through the wicket gates, which can be controlled automatically or manually.

- It then continues past the turbine blades, which turn the generator at a constant 100 revolutions per minute (RPMs), changing the energy into electrical energy.

- The 13,800 AC voltage is delivered through the switchgear to a transformer, which steps up the voltage to 138,000 AC for transmission.

Toledo Bend Hydro is normally staffed by Garner; Victor Olson, master electrician; and Ernest Hatcher, repairman-1st class. Late this summer, they were joined by about a dozen maintenance employees from Neches Station for the annual maintenance work.

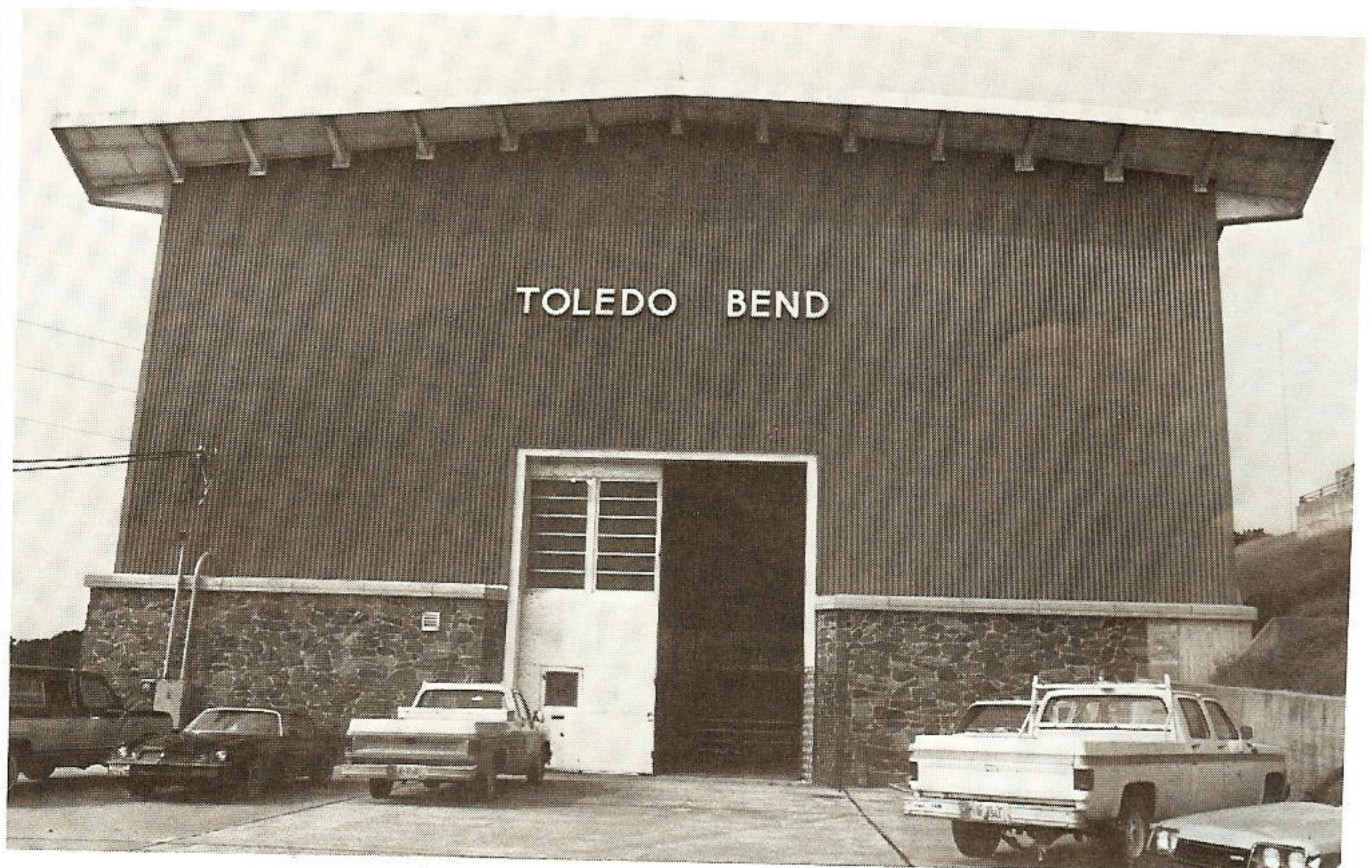
Ordinarily, Garner is in charge of the control room eight hours a day, five days a week. The plant can also be operated by remote control from the system operator's post in Beaumont.

Toledo Bend Reservoir, the South's largest man-made lake with 1,200 miles of shoreline, offers plenty of recreational opportunities for Texans and Louisianians.

And Toledo Bend Hydro, quietly and efficiently, helps light up their homes.



Brenda Haynes, repairman-1st class of Neches Station, assists with maintenance.





The Laotian marketplace reflects Fred Gilbert's artistic interest in Asian subjects.

Portrait of a GSU artist

by Susan Gilley

Fred Gilbert considers himself an apprentice in art.

"I learn from every painting I make, including the bad ones. I'm still in a great learning process," the Baton Rouge-based security representative insists.

Others, including those who have bought his paintings, seem to be happy with Gilbert's present stage of artistry. Ironically, the more successful an artist Gilbert becomes from a commercial standpoint, the more determined he is to preserve his status as a leisure-time artist only.

"At some point, it quits being a hobby," says Gilbert, noting that some buyers have specific subjects in mind. While no deadline may be discussed, Gilbert feels pressure from

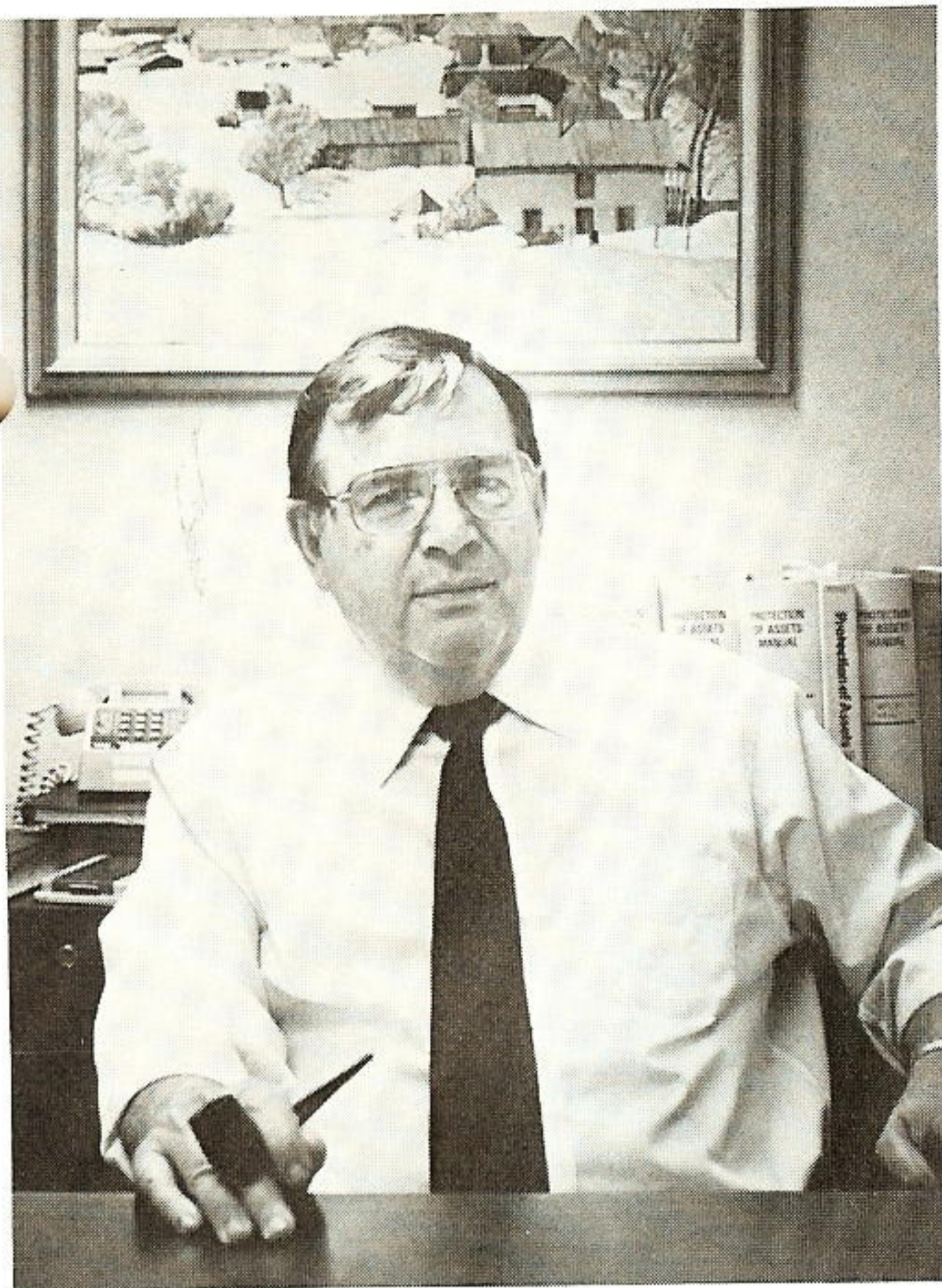
within himself to hurry up and provide the desired painting.

Gilbert is naturally reticent about showing his paintings, but his wife Paula is the opposite. A former public affairs professional, she has spent the past few years "promoting" her husband's paintings. "I've never personally entered a show. Paula handles all that. I used to give all my paintings away and she nearly got me," he recalls, laughing.

First, Mrs. Gilbert submitted her husband's works in a Texas county art show where Gilbert won first prize in watercolor. In the 1982 GSU Employee Art Show, Gilbert walked away with "Best of Show" for his watercolor of a Southern home with gazebo.

Since then, his work has been shown in Baton Rouge area restaurants and art galleries — sometimes sporting price tags. "I'd mark them high if I didn't really want to sell them," says Gilbert. Buyers were not always driven away by the prices, he discovered to his dismay.

Gilbert first studied art as a youngster in the Southern California public school system, but he has been "painting consistently for only the past four years," he reveals. His public school start was a good one, however, since the native Californian recalls that the region had one of the best art teaching programs in the nation. Later, Gilbert took a few art courses on his way to earning a bachelor's degree in advertising



Fred Gilbert, security representative.

at the University of California in Los Angeles.

A retired government worker who has been with GSU for two

years, Gilbert's favorite subject in any media is Southeast China, where he lived on assignment from 1963 to 1969. While overseas, he filled sketchbooks and shot a lot of photographs, often focusing on sampans and junks.

"From those early days, I never once stopped thinking like an artist, but I never had the time. I'd look at things and say, 'How would I do it? Where are the shadows? Where are the light contrasts?' I was accumulating data," he muses.

Years later, he uses the Asian sketches and photographs for reference, especially for intricate architectural detail and the "atmosphere" of a scene. Many of his paintings originate from his memories of having flown over areas, such as Hong Kong's harbor.

Gilbert, who works with watercolors, oils and acrylics, claims his work most resembles that of the 19th century landscape artists.

The longer he lives in Baton Rouge, the more he paints traditional Southern scenes, including a river boat, a New Orleans home and an Acadian cabin. "Baton Rouge is a beautiful, beautiful place," he exudes, adding that the locale played a role in his accepting the job as security representative for Louisiana operations. "It's not too large. Living in the state capital is an exciting experience. With the university here, it adds to the excitement, as well as the cultural aspects," he continues.

Whatever his subject, Gilbert says he has only one purpose as an artist — "to advance as far as my ability and talent will let me."

Accident shows value of safety glasses

by T. J. Reyes

It's been over six months since the day M. L. Hooper fell at work, but the scar and the memory still linger.

While reaching for a crane control box, the chain that suspended the control box broke, causing Hooper to lose his balance and fall about seven feet to the floor. The repairman-2nd class at Nelson Coal Plant hit his head near his left eye on a corner of the control box. Since he was wearing safety glasses, the blow did not harm his eye. However, his brow was cut by the box.

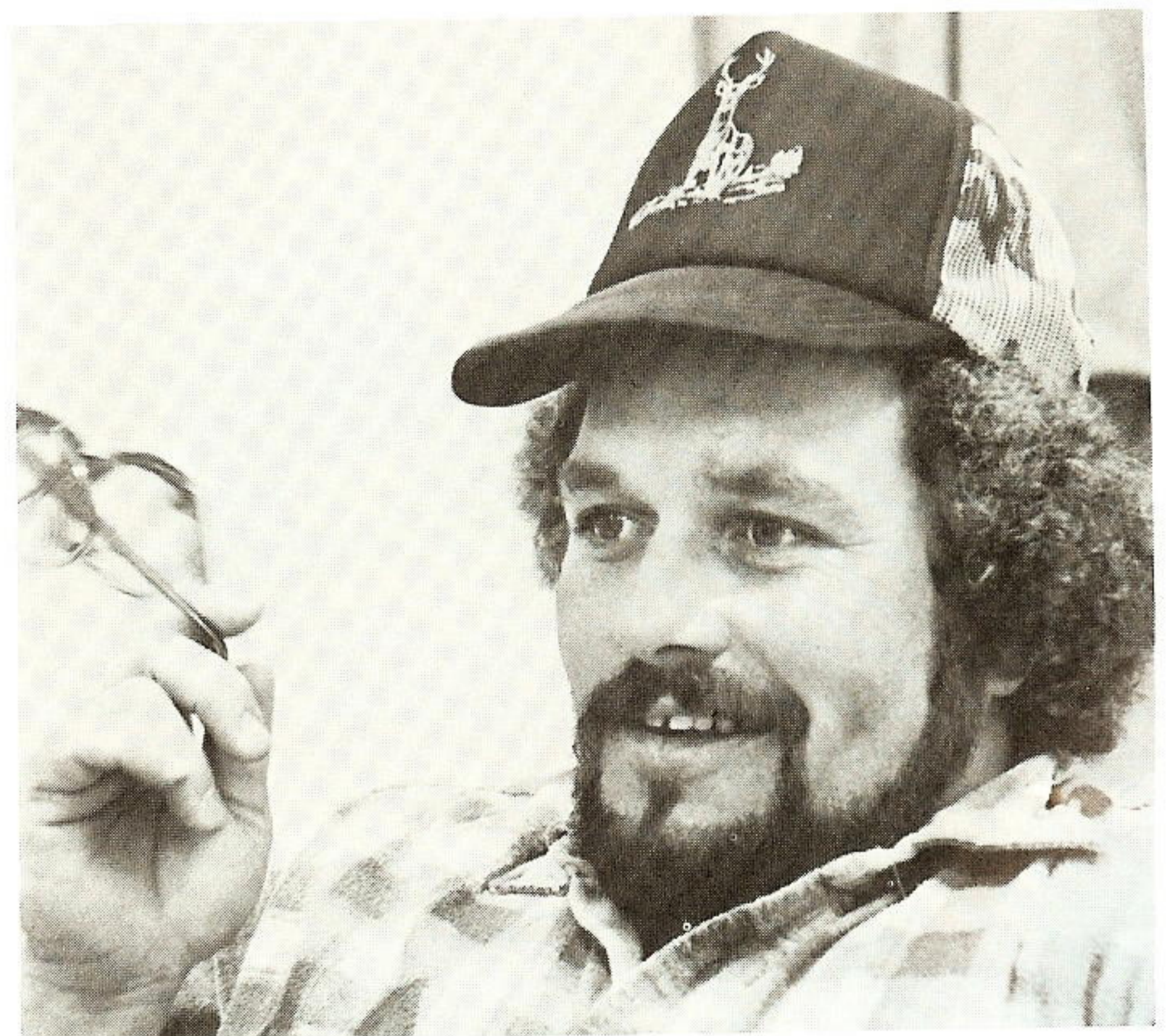
Hooper, a union steward, credits his safety glasses with saving his eye from possible injury. Before the accident he says he thought safety glasses were useful because they provided protection from dust and other airborne particles. Now, during the interview, leaning back in his chair and twirling his safety glasses, he says, "I know the real benefit of wearing safety glasses. When my head hit that box eye first, I could have lost my eye."

Also helpful was First Responder David Brawner, a repairman-1st class, who was at Hooper's side within seconds after the fall. Brawner used his first aid training to stop the

cut from bleeding. He took Hooper to the plant's first aid center and stayed with him during the ambulance ride to the hospital.

At the hospital, 10 stitches were needed to close the laceration.

M. L. Hooper was back at work the very next morning with a bandage over his eye and the cracked glasses as a reminder of the value of wearing safety glasses.



M. L. Hooper, repairman-2nd class.

Allen English: Port Arthur's problem-solver

by Mike Rodgers



Allen English says he enjoys "doing something different."

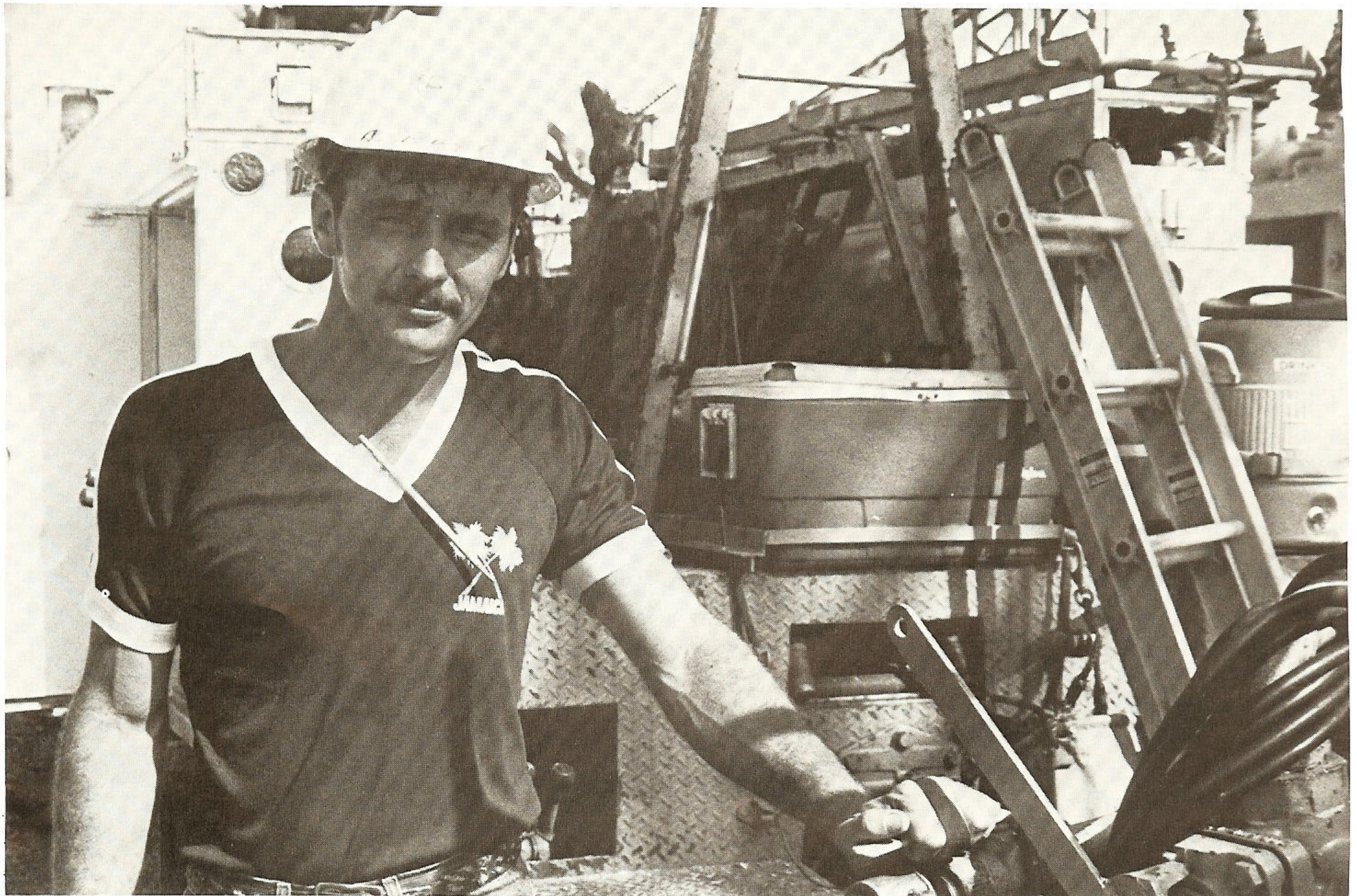
The substation maintenance section of Port Arthur Division needed some desks in the shop area, so Allen English was called upon to do the job. "They just wanted desks, so that's what I came up with," says English, a substation mechanic-1st class. It's that inventiveness and skill which makes English a popular and respected employee.

His Gulf States career is one that has been marked by steady progress. Starting as a meter reader eight years ago, he transferred to T&D as a helper in 1978, and advanced to his present position. "I'm always doing something different," says English if you ask him why he likes his job. That "something

different" may include maintenance, construction, welding or carpentry. For example, English redesigned and built two oil presses for substation maintenance, and the procedure he devised for watering batteries won him a cash award. When pressed to explain his problem-solving abilities, he says: "I like to invent things to make work easier since I'm the one who has to do it."

Substation foreman Lee Terro notes English's enthusiasm and versatility and says he is "one of those unique employees who can do just about anything you give to him."

When it comes to hobbies, English's list is short: "Vacation," he says with a smile. Other than that, work is his hobby.



A wide range of interests enhances Allen English's ability to do his job.



A caravan of line crews returns home from the Western Division.

Hurricane Alicia

by T. J. Reyes

When Hurricane Alicia hit the Texas coast at Galveston on Aug. 18, there were 18 people dead and an estimated billion dollars of damage. Gulf States was hit hardest in the Western Division, but throughout the GSU service area about 99,000 customers were left without power.

Line crews from all over the company, Dallas Power and Light, Texas Power and Light and private contractors rallied to restore service for those left in the dark.

But when the work was done, GSU President Norman Lee was full of praise for a job well-done. He congratulated all crews for completing the storm work without a single accident. Lee was also on hand to greet about 50 line crews at the Beaumont Service Center as they returned from working in the Western Division.

Conroe clerk Vickie Nelson expressed her appreciation for the hard-working crews in a different way — a poem. According to Nelson, she “had never written poetry before, but the thoughts for this poem just came” while she was writing her grocery list Saturday morning after the storm.

To the Line Crews

*Hurricane Alicia is finally ended;
The winds are gone, the damage is done.
You worked hard — we all know you did,
To restore the power to those who had none.*

*It takes every department to work a storm;
Each person has a part to play.
But it's the Line Crew that's really tired and worn,
They're the ones I honor today.*

*Climbing those poles and working those lines;
Getting material out to the site.
You want to call it quits at times,
But you do your job and do it right.*

*Working countless hours a day;
On the job before daylight, home after sunset.
It isn't easy no, no way.
But you keep on going, that you can bet.*

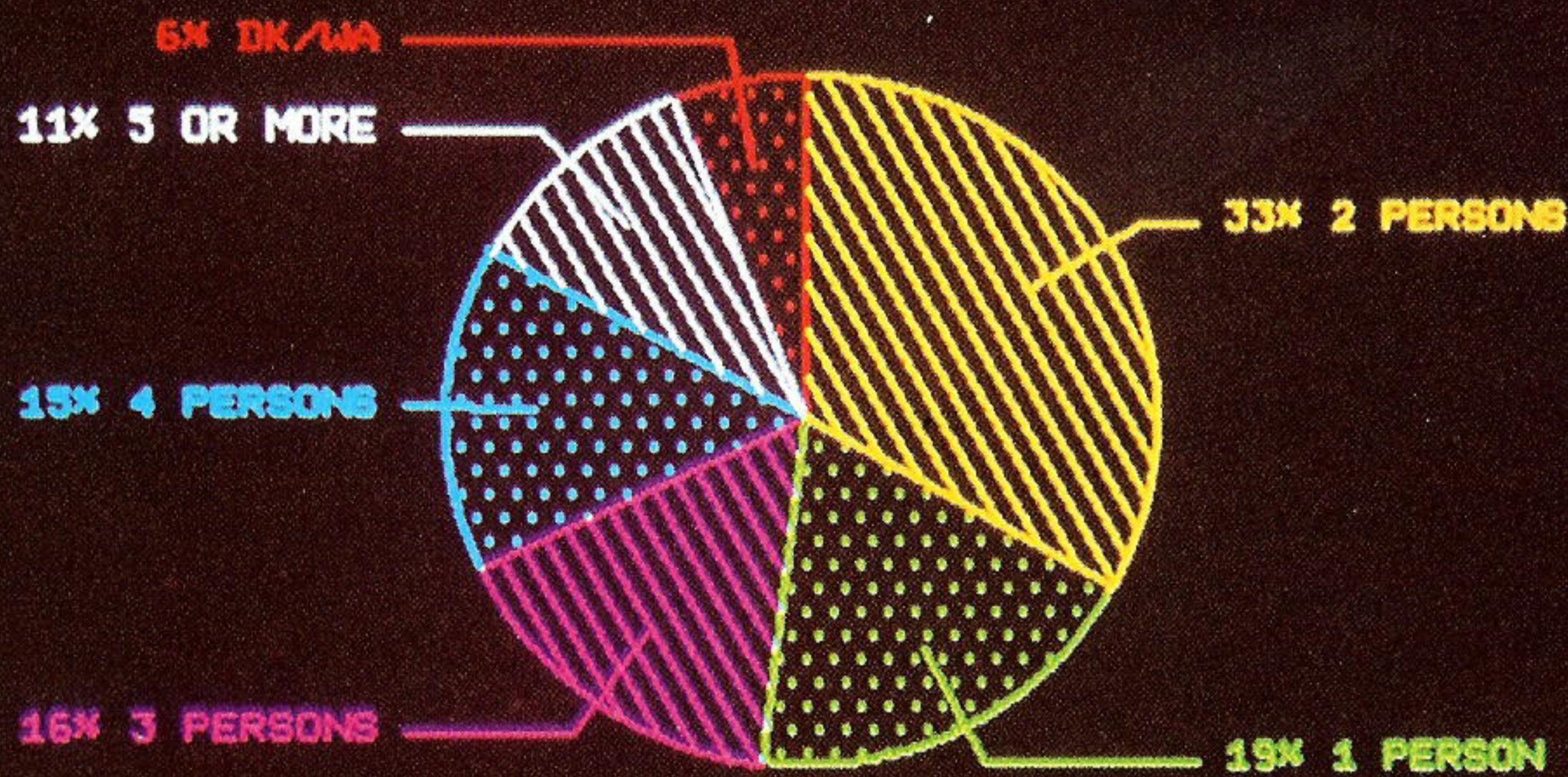
*Well, I appreciate and admire you,
And I'm sure I'm not the only one.
Alicia gave you a fight, that's true,
But in the end the Line Crew won.*

— Vickie Nelson

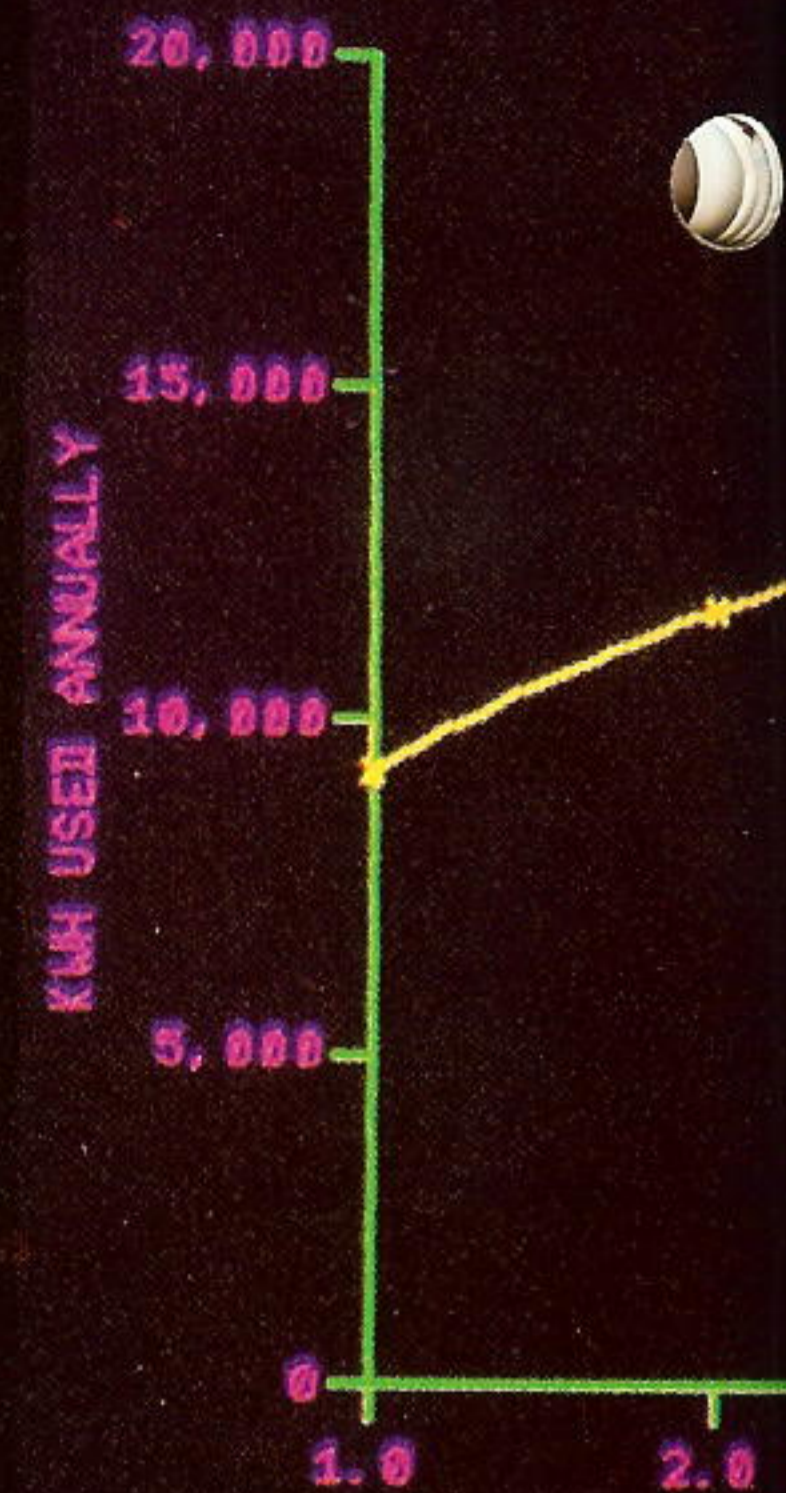


Vickie Nelson

NUMBER OF PERSONS PER DWELLING



-KWH CONSUMPTION



Study reveals—what's behind

by Susan Gilley

Smaller homes, scaled down for one-, two- and three-person households, seem to be the trend for the 1980s in the GSU service area. Since 1970, townhouses and condominiums have experienced a 13.7 percent compound growth rate. Mobile homes have grown by 7.9 percent since 1970, and apartments and duplexes have experienced a 3.4 percent compound growth rate since that time.

Traditional single-family housing, on the other hand, declined by 1.3 percent from 1970 to 1983.

These are some of the findings of the Residential Market Saturation Study for 1983, reports Brent Dorsey, supervisor-load and energy forecasting. The company can use these facts and other bits of information gleaned from the study in planning its strategy for the rest of the century.

Conducted each spring since

1980, the survey was initiated to fulfill certain requirements of the Public Utility Regulatory Policy Act (PURPA) of 1978. The act primarily seeks data related to electric water and space heating, such as what percentage of kilowatthours goes to these end uses.

"That was the original reason we started the survey," admits Dorsey, "but now that GSU is increasing activities in forecasting and marketing, it provides a base point. Now we have a once-a-year picture of our customers."

To select a cross-section of GSU's Louisiana and Texas customers, the pollsters drew a random sample using a cluster technique. The term refers to selecting a "cluster" of four neighboring customers, assumed to have similar economic and demographic characteristics. Only one customer in each cluster is used, but the method provides a substitute when any customer declines to participate.

Although the survey has been conducted only since 1980, the

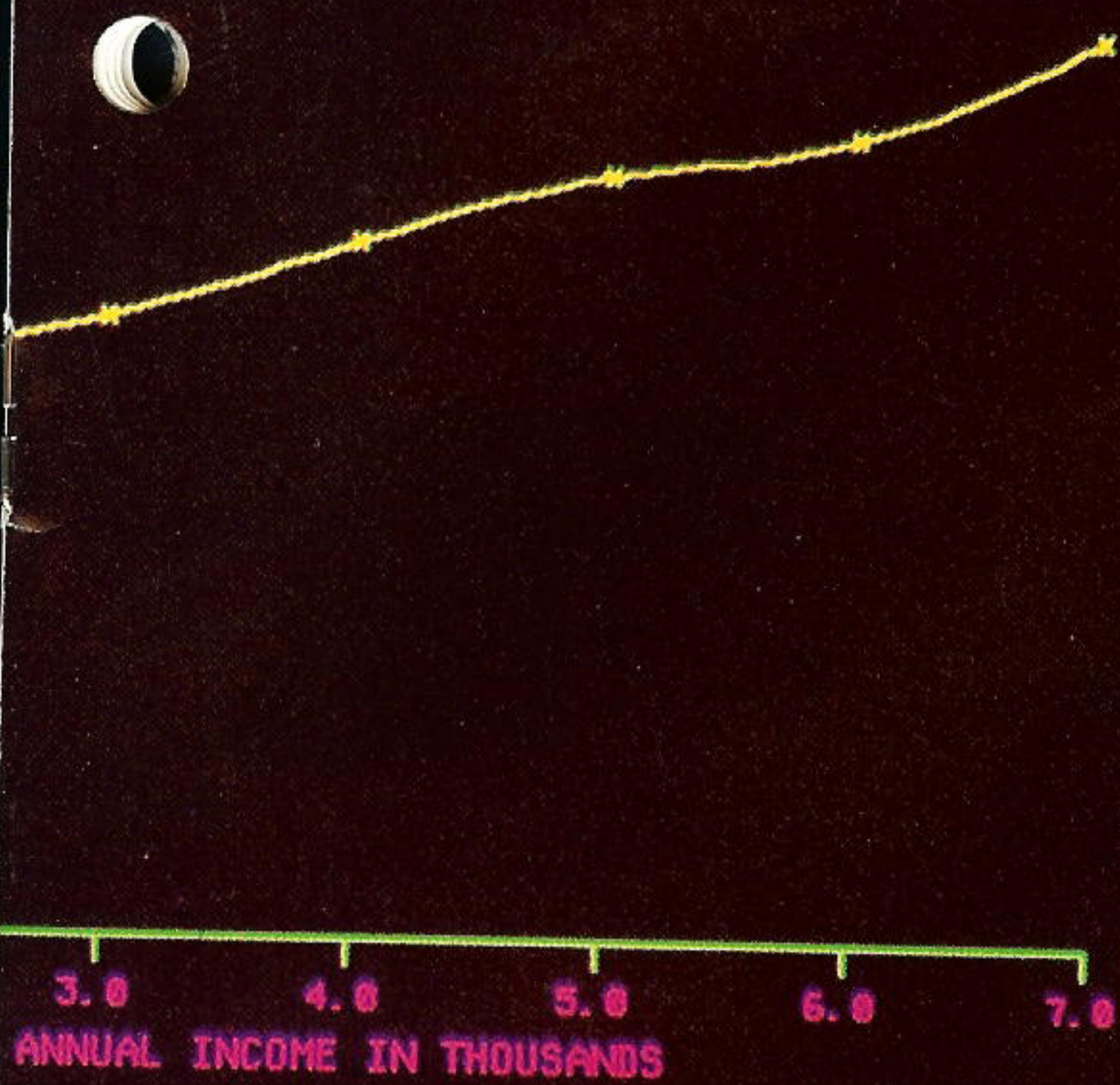
facts emerging from the survey can be compared to those gathered in a similar survey conducted in 1970.

In 1983, about 75 percent of GSU's customers lived in a single-family dwelling, while 10 percent lived in mobile homes and 11 percent lived in apartments and duplexes. About 1.6 percent lived in townhomes or condominiums.

In 1970, however, 89 percent of GSU's customers lived in single-family dwellings, while only 4 percent lived in mobile homes. At the same time, only 7 percent resided in apartments or duplexes, while only .3 of 1 percent lived in townhomes or condominiums.

Dorsey says other useful information provided by the survey includes the percentages of dwellings in different size ranges and kilowatthour usage by different dwelling types. Townhouses — usually all-electric since they are newer — reported the highest average yearly usage

CONSUMPTION AS A FUNCTION OF INCOME



Photographics by Ed Matsoukas

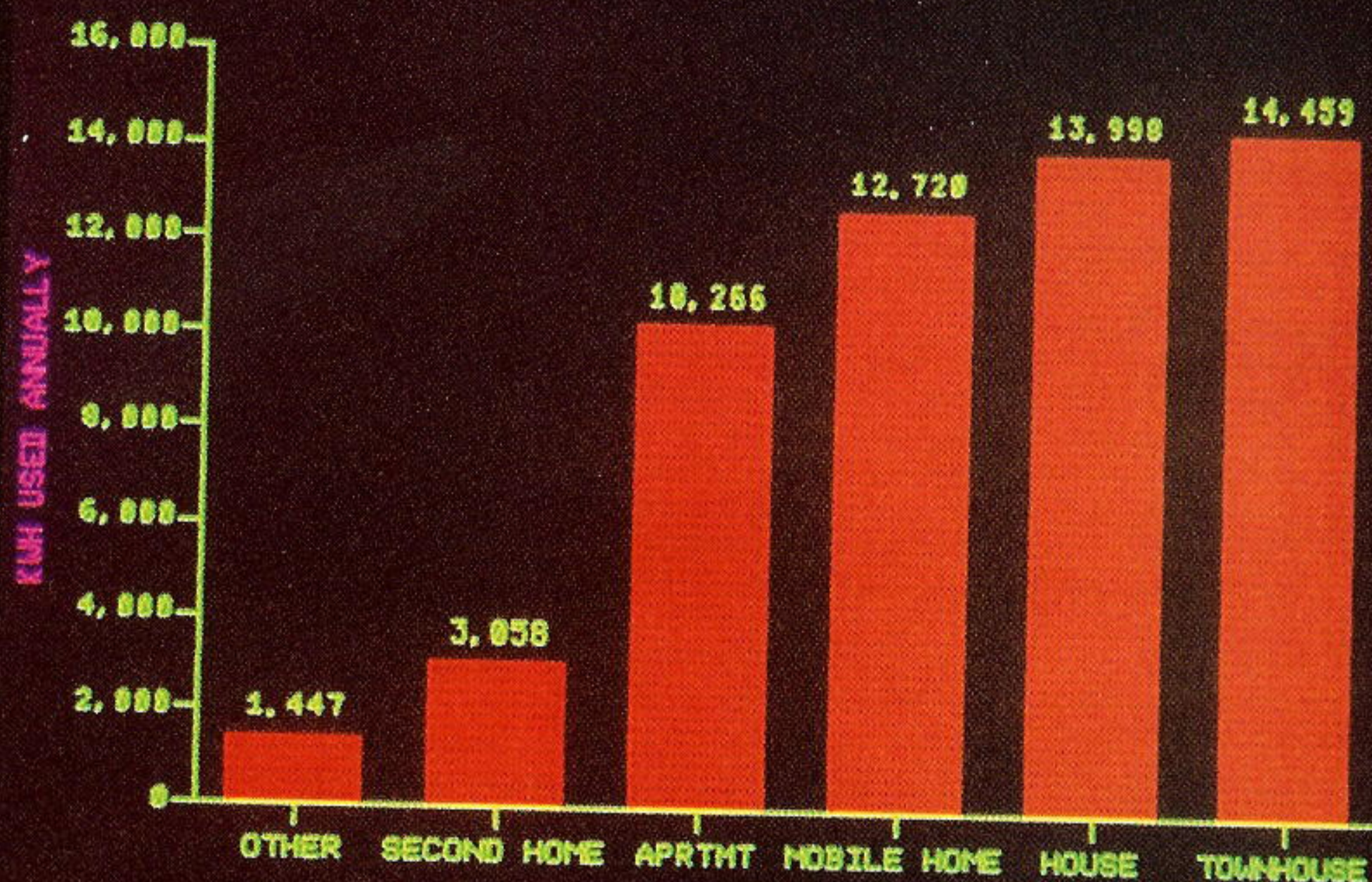
the numbers?

of kilowatthours. Their consumption topped the 14,000-kilowatt-hours-per-year mark, while apartments barely topped the 10,000-kilowatt-hour mark for average yearly usage. Dorsey attributes that to a combination of gas and electric heating in other types of homes.

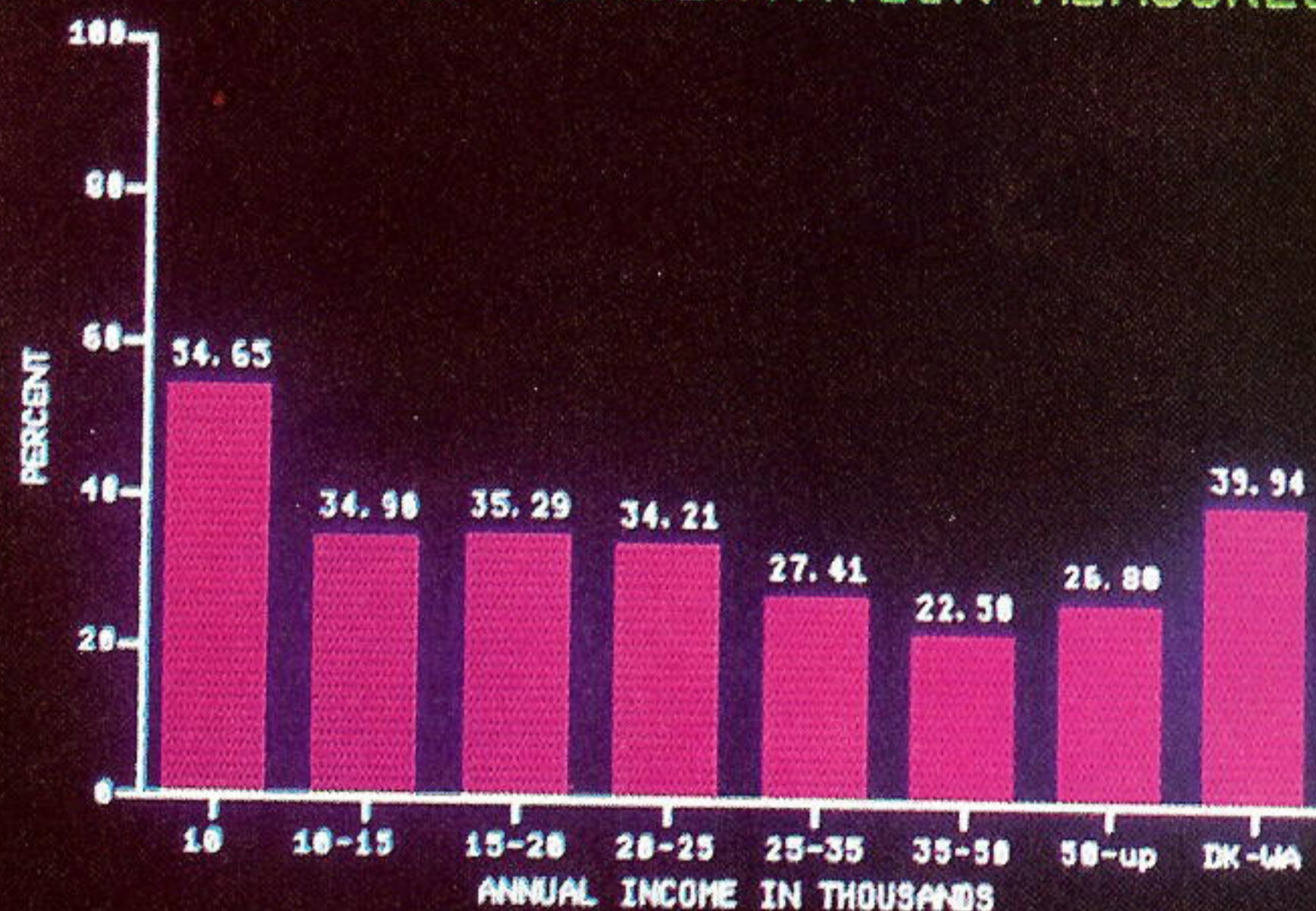
Not only did the survey corroborate what seems to be a national trend toward smaller homes, but it also confirmed the national infatuation with television. In the service area, the color television set is one of the most common major electrical appliances in any home. A total of almost 84 percent of the respondents system-wide noted that they have one or more color television sets in their homes.

The survey has been distributed to each of the five operating divisions and is in the GSU Corporate Library. Additional details can be obtained by calling Dorsey or Ed Matsoukas, forecasting data analyst.

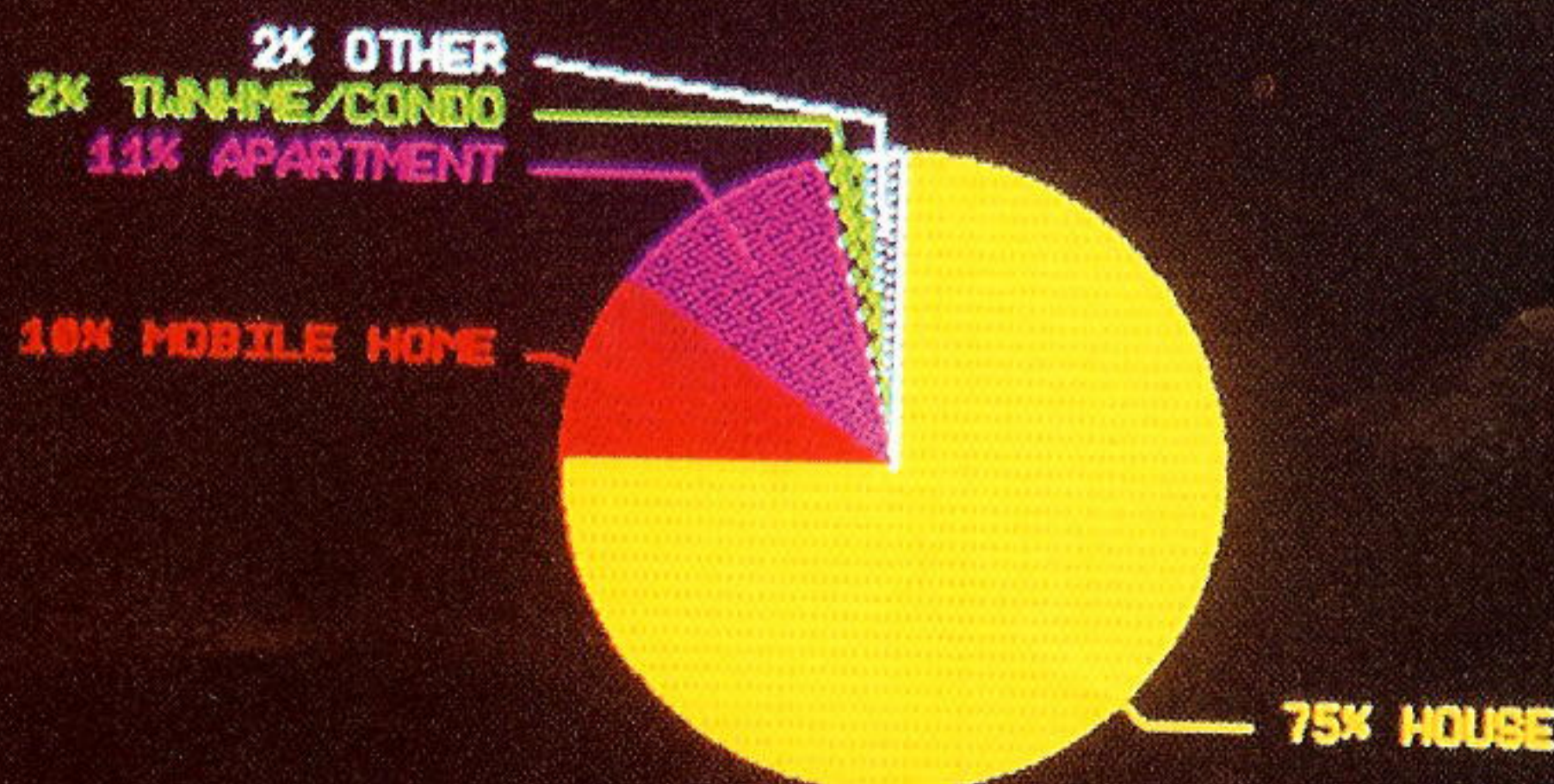
KWH USAGE BY DWELLING TYPE



PERCENT OF EACH INCOME GROUP THAT TOOK NO CONSERVATION MEASURES



TYPE OF DWELLING



ON THE MOVE

A

Acosta, Anthony B., Sabine Station, to repairman-2nd class, Plant Production.

Albert, Joseph E., formerly of Louisiana Station, to repairman-1st class-nuclear, Plant Production, River Bend.

Anderson, David L., Beaumont, to serviceman-4th class, Electric T&D.

B

Bean, Minion C., Beaumont, to senior graphic technician, Office Services.

Beasley, Larry E., Louisiana Station, to shift supervisor, Plant Production.

Becker, David K., Beaumont, to relayman-2nd class, Electric T&D.

Bergeron, Hugh R., Baton Rouge, to corrosion technician-1st class, Gas Dept.

Borel, Dwayne L., Port Arthur, to substation mechanic-4th class, Electric T&D.

Braud, Randy M., formerly of Louisiana Station, to repairman-1st class-nuclear, Plant Production, River Bend.

Broussard, Dennis F., Willow Glen Station, to engineer, transferred from System Production to Plant Production.

Broussard, Randall P., Nelson Coal, to repairman-3rd class, Plant Production.

Brown, Raymond W., Baton Rouge, to pipeman welder-2nd class, Gas Dept.

Brushaber, Jeffrey F., Beaumont, to lineman-4th class, Electric T&D.

Buller, Matthew P., formerly of Nelson Station, to instrument control technician-1st class-nuclear, Plant Production, River Bend.

Burbank, Janis L., Baton Rouge, mathematician, transferred from Rates & Regulatory Affairs to Marketing & Consumer Services.

C

Cicio, Patrick J., Beaumont, to staff accountant I, Rates & Regulatory Affairs.

Clay, Albert, Beaumont, to lineman-1st class, Electric T&D.

Cobb, Keith L., Vidor, to lineman-4th class, Electric T&D.

Collier, Michael D., Baton Rouge, to substation mechanic-2nd class, Electric T&D.

Courtade, Russell A., Willow Glen, to repairman-1st class, Plant Production.

D

Davenport, Bruce M., Willow Glen, to test technician-2nd class, Plant Production.

E

Eppinette, Michael D., Conroe, to apprentice, Electric T&D.

F

Fontenot, Kenneth W., Beaumont, to lineman-4th class, Electric T&D.

Forward, Rudolph W., Orange, to apprentice, Electric T&D.

Frederick, James W. Jr., Lafayette, to lineman-4th class, Electric T&D.

Fredricksen, Robert A., River Bend, to supervisor-reactor start up & test, River Bend Nuclear Group.

G

Galassi, Frank G., Huntsville, to lineman-3rd class, Electric T&D.

Gammage, Frank W., Beaumont, to lineman-3rd class, Electric T&D.

Ghadia, Suresh K., Beaumont, to lead chemical engineer, Power Plant Engineering & Design.

Gibson, Benny L., Beaumont, to relayman-2nd class, Electric T&D.

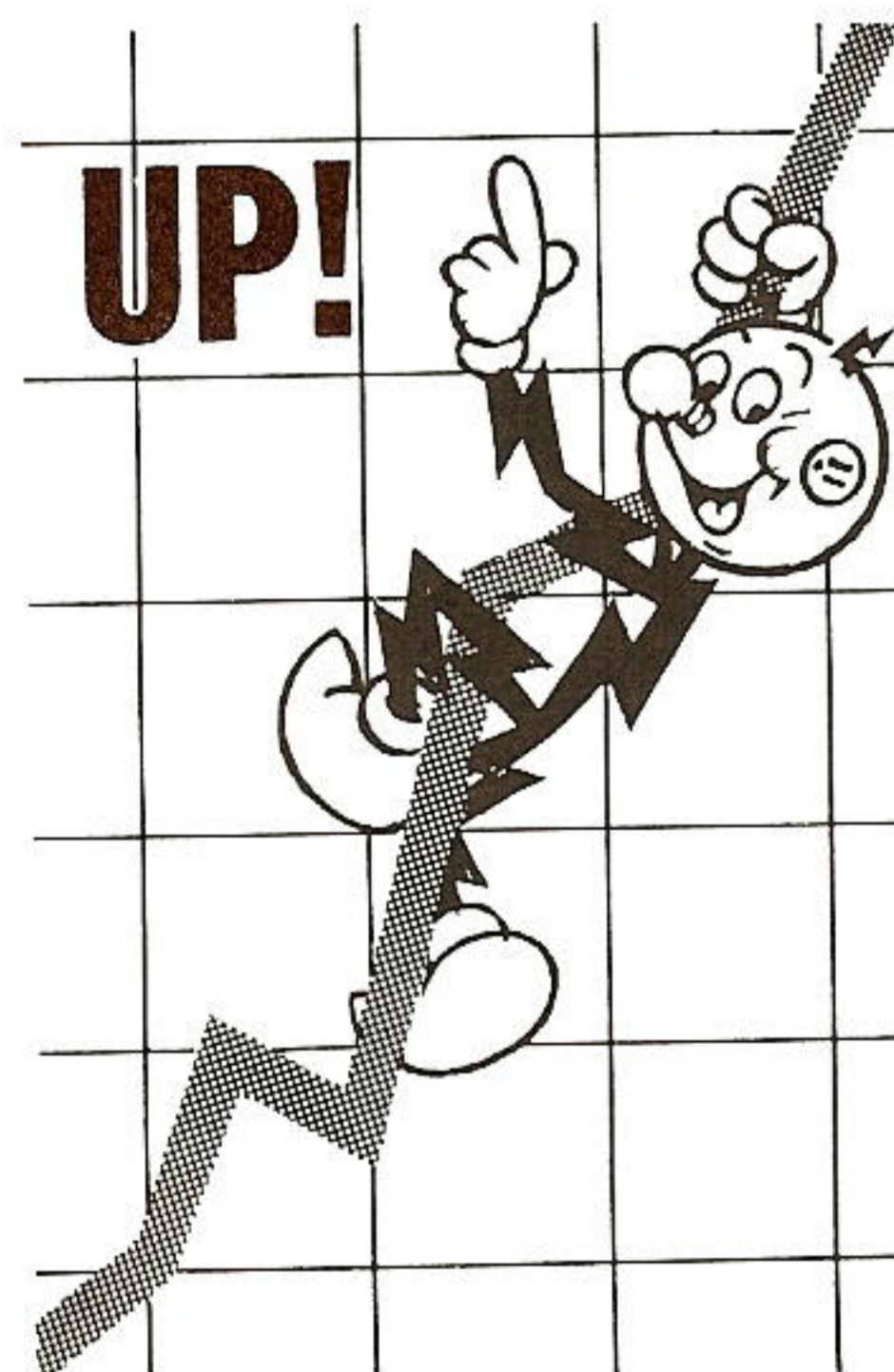
Graham, Bertie S., Beaumont, to legal stenographer, Legal Services.

Gross, Sherbert A., Denham Springs, to lineman-2nd class, Electric T&D.

Guillory, Robert E., Orange, to substation mechanic-2nd class, Electric T&D.

Guinn, Jesse, Nelson Coal, to shift foreman, Plant Production.

Guins, Alan P., Nelson Coal, to electrician-3rd class, Plant Production.



H

Hardy, Thomas J., Beaumont, to lead electrical engineer, Power Plant Engineering & Design.

Harris, Lucille M., Conroe, to relayman-2nd class, Electric T&D.

Hartzell, Lawrence V., Sabine Station, to test technician-1st class, Plant Production.

Hatcher, Robert K., Sabine Station, to repairman-1st class, Plant Production.

Hignett, James K., Silsbee, to lineman-4th class, Electric T&D.

Hodges, Kenneth C., River Bend, to senior quality assurance engineer, River Bend Nuclear Group.

Holiday, Johnnie C., Beaumont, to garage worker, Electric T&D.

Holland, Larry G., Neches Station, to utility worker II, Plant Production.

J

Jasper, Thomas E. Jr., Silsbee, to lineman-2nd class, Electric T&D.

Johnson, Donald R., New Caney, to senior district service representative, Division Consumer Services.

Jones, Johnnie J., formerly of Louisiana Station, to repairman-1st class-nuclear, Plant Production, River Bend.

K

Kebedeaux, Craig M., Beaumont, to electrical engineer, Power Plant Engineering & Design.

Keeney, Jeffrey L., Port Arthur, to lineman-3rd class, Electric T&D.

Kemp, Gregory D., Silsbee, to apprentice, Electric T&D.

Khan, Abdul M., formerly of River Bend Site, transferred to supervisor-engineering analysis, River Bend Nuclear Group, Beaumont.

Knighten, Hawthorne N., Baton Rouge, to serviceman-2nd class, Gas Dept.

Kopecky, Jean T., Beaumont, to staff accountant I, Accounting Services.

Kordie, Mark R., Beaumont, to senior draftsman, Engineering Design.

Kovach, David E., Conroe, to serviceman-1st class, Electric T&D.

L

Lawrence, Donald A., Beaumont, to utility worker II, Building Services.

Lewis, Sherman A., Beaumont, to senior draftsman, Engineering Design.

Lintzen, Gregory K., Nelson Coal, to electrician-1st class, Plant Production.

ON THE MOVE

M

Marston, Margaret A., Louisiana Station, to mechanic helper, Plant Production.

Mayfield, Bendel K., Lafayette, to serviceman-1st class, Electric T&D.

McCauley, Norman G., Daisetta, to lineman-3rd class, Electric T&D.

McCorvy, Brenda H., Beaumont, to chief operator-PBX, General Services.

Melancon, August P., River Bend, to turbine engineer, Plant Production.

Miller, David A., Nelson Coal, to repairman-2nd class, Plant Production.

Mitcham, Thomas W., formerly of Orange, to assistant general substation supervisor, T&D Substation, Beaumont.

Moore, Steven L., Port Arthur, to substation mechanic-4th class, Electric T&D.

Morgan, Marvin, Baton Rouge, to lineman-4th class, Electric T&D.

Morris, Carol L., Beaumont, to consumer information coordinator, Division Marketing & Consumer Services.

Morris, Timothy L., Beaumont, to senior corporate research analyst, Corporate Services.

Morton, Patrick, K., Beaumont, to assistant inventory analyst, Materials Management.

P

Parsons, Robert N., Orange, to utility foreman, Electric T&D.

Perodin, Larry, Jennings, to district service representative, Division Marketing & Consumer Services.

Phifer, Wanda C., Conroe, to senior engineering assistant, Electric T&D.

Pickart, Joseph R., Winnie, to lineman-4th class, Electric T&D.

Pitman, Dennis L., Beaumont, to inventory analyst, Materials Management.

Price, Ronald J., Port Arthur, to lineman-1st class, Electric T&D.

Pruitt, John J., River Bend, to director-management systems, River Bend Nuclear Group.

Puls, Mark E., Conroe, to apprentice, Electric T&D.

R

Rachal, Michael D., Baton Rouge, to lineman-3rd class, Electric T&D.

Rayburn, Marshall W. Jr., Neches Station, to operator's helper (aux.), Plant Production.

Rich, Gary E. Jr., Dayton, to lineman-4th class, Electric T&D.

Rogers, McKinley B., Beaumont, to generation planning engineer, Power Interconnections.

S

Saunders, Raymond L., Orange, to truckdriver, Electric T&D.

Schmidt, Glendon M., Conroe, to relayman-2nd class, Electric T&D.

Seal, Rickey B., Baton Rouge, to lineman-3rd class, Electric T&D.

Skipper, Karyn R., Lewis Creek Station, to staff accountant I, Plant Production.

Smith, Gregory W., Sabine Station, to utility worker II, Plant Production.

Smith, Thomas D., Winnie, to lineman-1st class, Electric T&D.

Spedale, Robert G., Louisiana Station, to repairman-3rd class, Plant Production.

Spivey, John W., Beaumont, to system distribution engineer, System Engineering.

Standberry, Donna F., Lake Charles, to departmental clerk, Electric T&D/Service.

Staton, John A., Conroe, to substation mechanic-1st class, Electric T&D.

Stutes, Kevin A., Lafayette, to truckdriver, Electric T&D.

Sund, George T., River Bend, to performance supervisor, River Bend Nuclear Group.

Swinny, Frank S., Conroe, to garage mechanic-2nd class, Electric T&D.

T

Thibodeaux, Byron K., River Bend, to control systems supervisor, River Bend Nuclear Group.

Thibodeaux, Christopher, Nelson Station, to repairman-2nd class, Plant Production.

Thibodeaux, Wyman L., Nelson Coal Plant, to mechanic helper, Plant Production.

Thomas, Emmanuel, Lake Charles, to engineering assistant, Electric T&D.

Thomas, Matthew W., Beaumont, to staff accountant I, Accounting Services.

Thompson, Oscar C., formerly of Orange, transferred to substation foreman, T&D Substation, Beaumont.

U

Ursprung, Linda M., Beaumont, to staff accountant I, Accounting Services.

V

Von Colln, William T., Baton Rouge, to communications foreman, T&D Relay & Communications.

W

Walker, Dent B. Jr., Beaumont, to lineman-4th class, Electric T&D.

Walker, James B. II, Sabine Station, to test technician-1st class, Plant Production.

Walker, Keith P., Port Arthur, to communications serviceman-1st class, Electric T&D.

Wallace, Doris W., formerly of Orange, transferred to employment associate, Human Resources, Beaumont.

White, Carl E., Conroe, to meterman-1st class, Electric T&D.

Williams, Bennie S., Port Arthur, to consumer information coordinator, Division Marketing & Consumer Services.

Willkomm, Gregory M., Conroe, to lineman-4th class, Electric T&D.

Z

Zalfen, David J., formerly of Louisiana Station, transferred to electrician-1st class-nuclear, Plant Production, River Bend.





Employees tour

River Bend open house

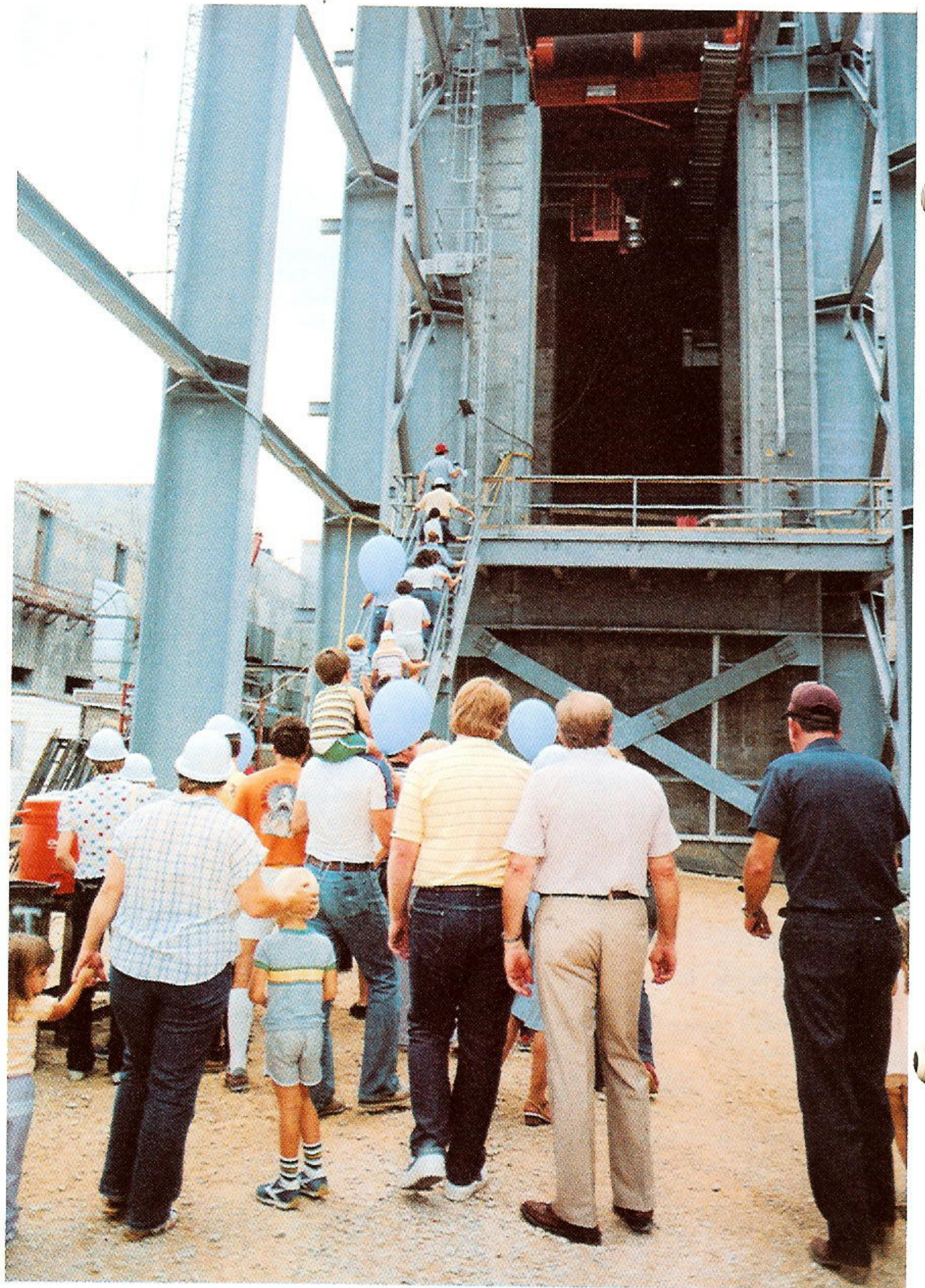
by T. J. Reyes

Although it was a warm and humid Labor Day, more than 4,000 employees and their guests took part in the River Bend open house.

Along with two walking tours of the construction area — one shorter, with less stair-climbing than the other — there were exhibit booths, favors for the children and snacks. The walking tours were led by guides from Stone and Webster, the engineering and construction firm for the nuclear project. The tours provided a close-up look at major areas of the plant, which was approximately 75 percent complete at that time.

Colorful tents shaded the safety exhibits, refreshments and a photographic history of River Bend. Guests at the open house learned about Gulf States, nuclear power and River Bend operator training from videotapes shown in various booths.

Fuel loading for River Bend is scheduled for early 1985 with commercial operation planned for later that year.



At upper left, the safety exhibit features firefighting gear. Above, employees and their guests enter the fuel building.



Tour participants gather at the snack tent.

GSU's handy man

by Susan Gilley

Terry Melancon is rarely content with the status quo.

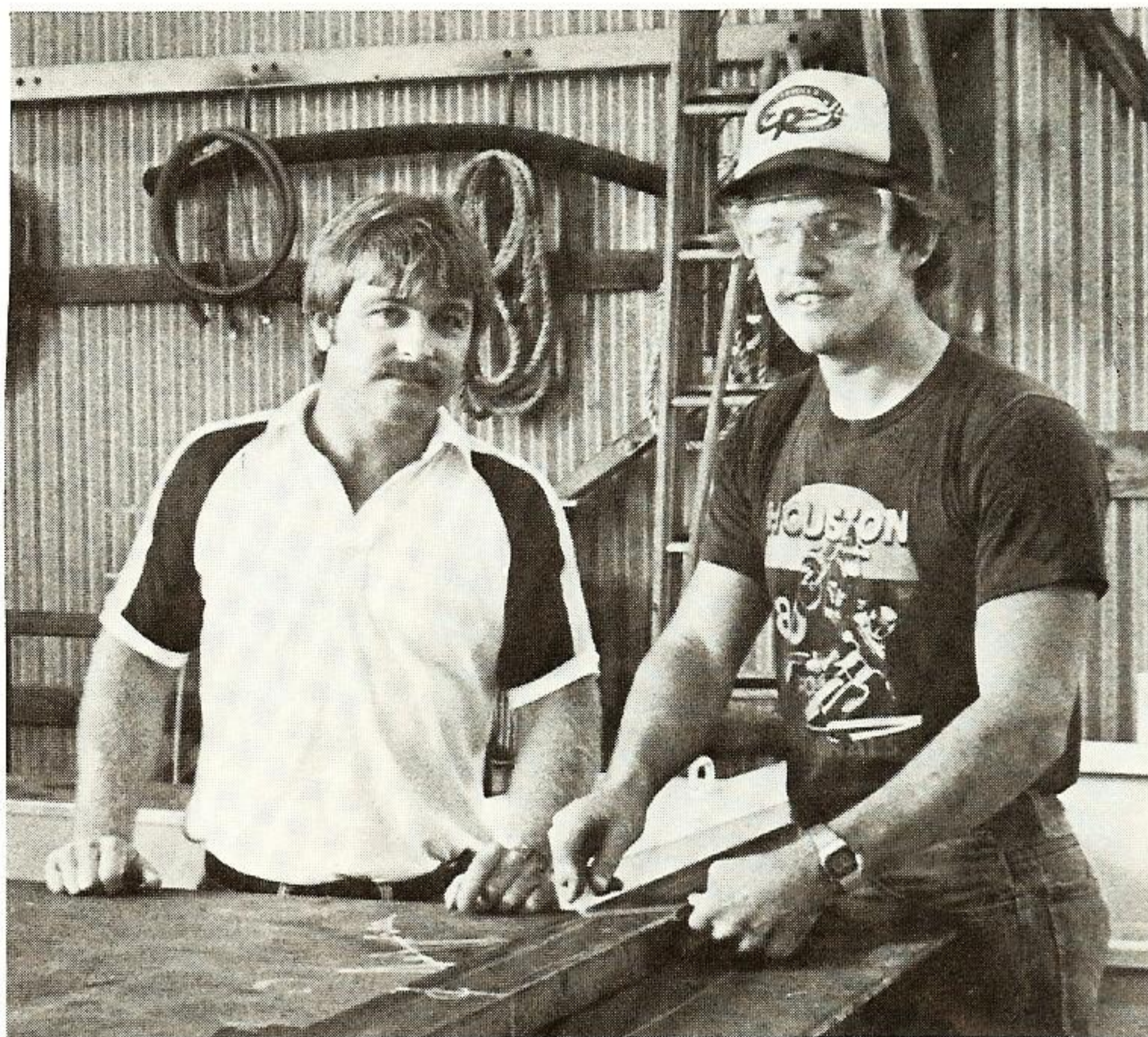
A tinkerer by nature, the 29-year-old Melancon likes to make improvements. That is how he came to design and build "Maurice," a four-cylinder, all-wheel-drive vehicle capable of taking T&D employees and equipment to boggy areas.

Melancon is shop foreman at Baton Rouge's Choctaw Service Center, a job he has held for three years. He acknowledges that the idea for Maurice "gradually developed in my mind," until he was able to perfect it, then implement it. Maurice has been used by the Line Department since December 1982.

Before joining Gulf States 10 years ago as a laborer in the Line Department, Melancon attended Louisiana State University for one year as an industrial education student. He says he has tinkered with machines since he was a child, starting out by working on small engines, then graduating up to motorcycles, cars and other vehicles.

Other creations that Melancon has put to use for GSU include an underground transformer buggy and a self-contained miniature cement mixer. He is presently trying to develop a peeline rig for on-the-job use.

Maurice was built "right here in the service



Terry Melancon observes Ronnie Edgens, T&D helper, at work.

center stall," says Melancon, at an estimated cost of \$10,000. Comparable vehicles sell for up to \$40,000. While the work was accomplished during slack periods on the job, Melancon admits that he "couldn't help taking it (the concept) home with me."

Even so, Melancon has plenty to occupy him at home, too, where he is putting the finishing touches on deep-sea fishing gear. He hopes that invention can be patented.

Melancon and his wife Vicki have two children, Terry Jr., 9, and Lacey, 6.

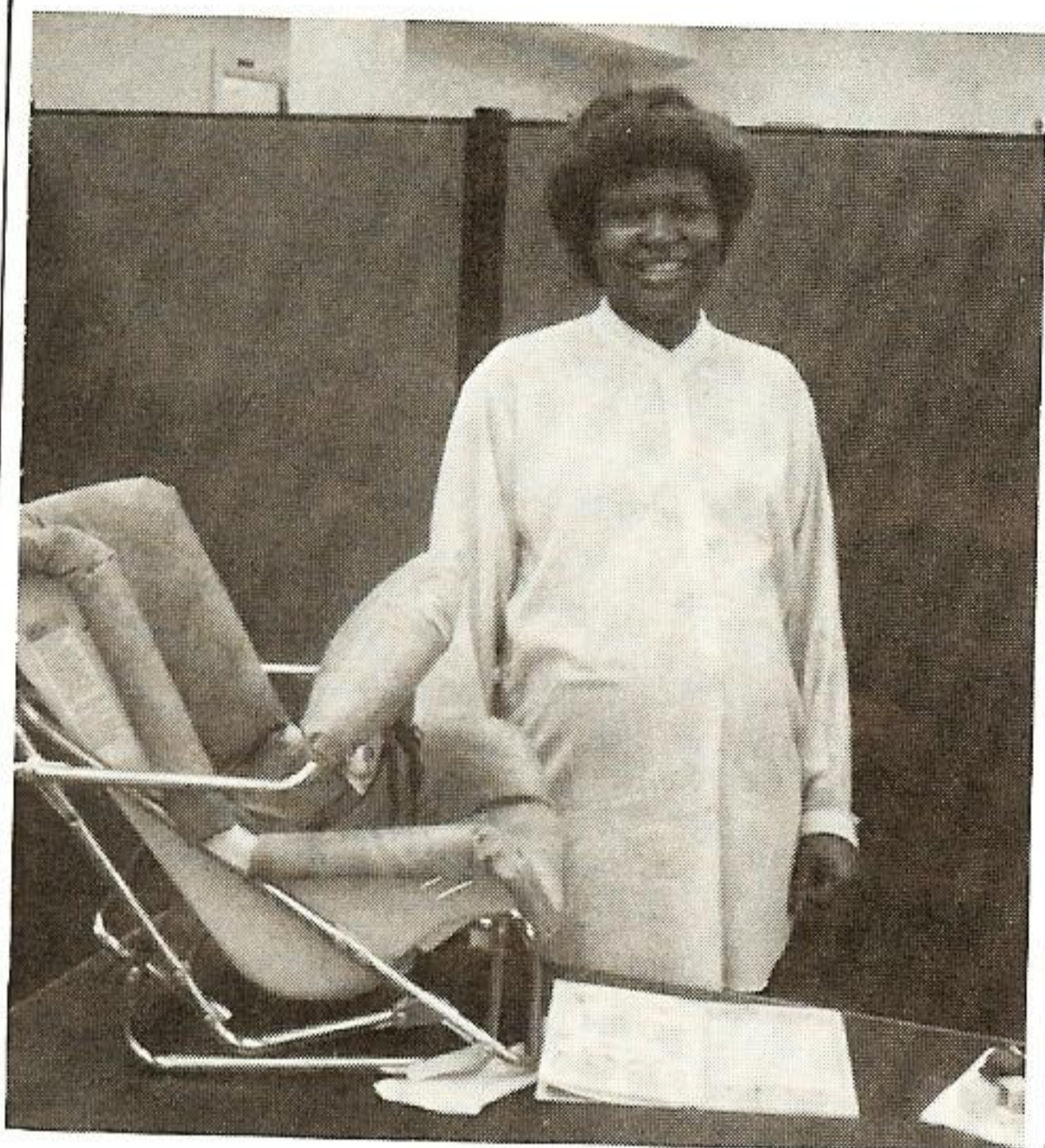


Photo by Charles Loewenthal

Terry Melancon and his invention, Maurice.

Davis given baby shower

Pauline Davis, departmental clerk at the Beaumont Service Center, was honored with a baby shower by co-workers. She was presented with an infant car seat. Davis, who has been with GSU since April 1982, was expecting the birth of her child in early June.



Ryan Michael joins Courvilles

Ryan Michael Courville was born May 7, weighing 7 pounds, 2 ounces.

His parents are Randy and Cindy Courville of Arnaudville. The father is a collector in Division Accounting, Lafayette.



Keaton (left) and Ashley Moore

Twins born to couple

Jack and Patty Moore are the parents of twins born June 6.

Ashley Rebecca weighed in at 7 pounds, 6 ounces and Keaton Allen weighed 5 pounds, 15 ounces.

The proud father is an engineering consultant at River Bend Station. The Moores, who are originally from Winston-Salem, N.C. have one other child, 2½-year-old Jamie René.

Picnic held near Silsbee



The winning volleyball team was made up of (kneeling, from left) Terry Sonnier, Brenda Vaughn, Jenna Abshire and Pam Danbom; and (standing, from left) Randy Vaughn, Denise Bruton, Danny Weinbaum, Bob Whaley, Carl Wilson, Tana Wilson, Monica Weber and Ted Weber.

Employees of Financial Services and Accounting Services were joined by family members at a June 18 picnic at the Live Wires Club near Silsbee.

Events of the day included volleyball, water balloon toss, tug-of-war contests and bucket truck rides.

Accounts Payable employees played on the winning volleyball team.

Becnel receives safety plaque

Ivy J. Becnel, a utility truck-driver in Lafayette, was presented with a safety plaque shortly before his retirement Aug. 1.

Becnel had worked safely since joining the company March 15, 1951.



Aggie and Ivy Becnel.

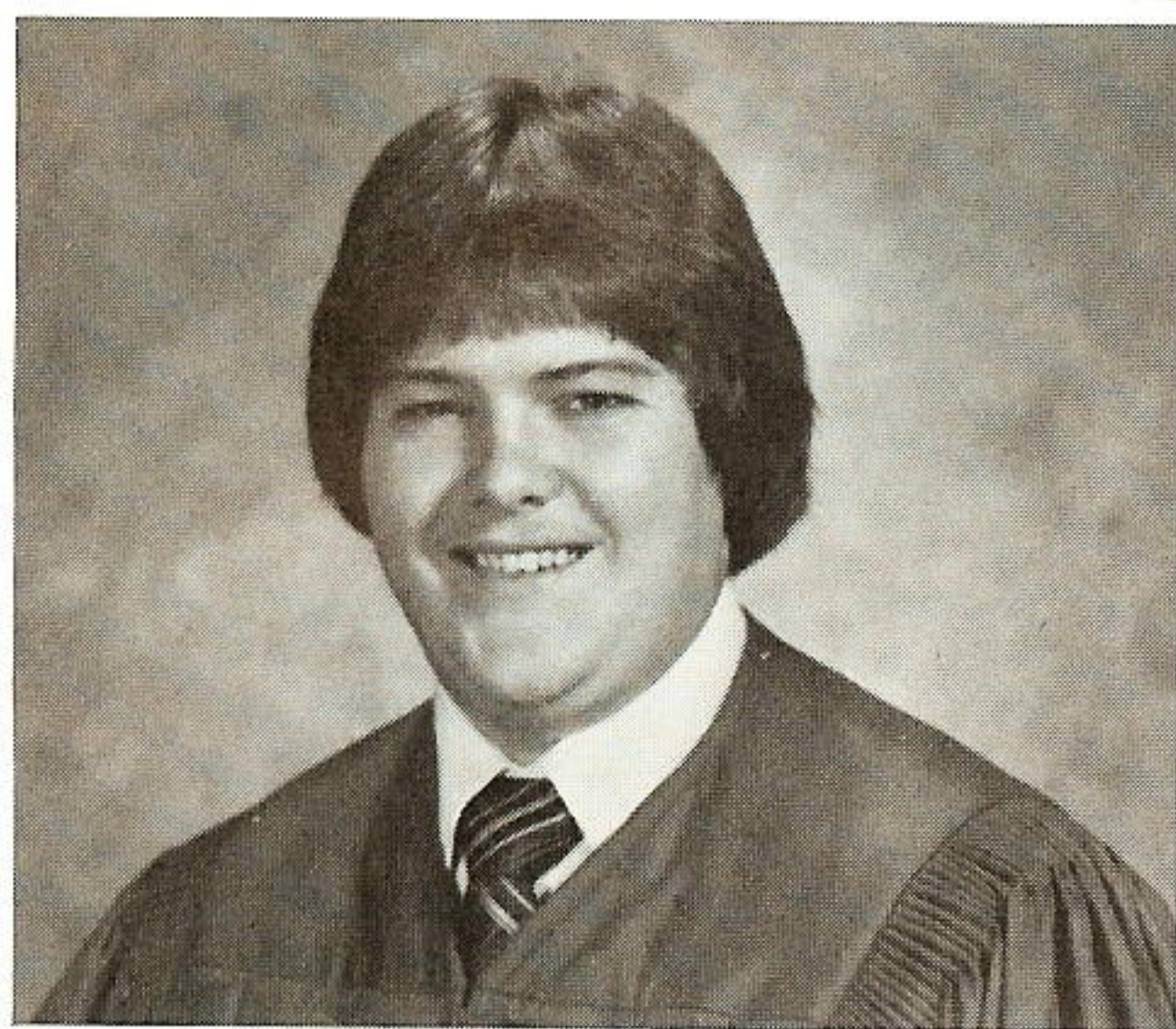
Straits welcome baby son

William Cody Strait, a healthy 8-pounder, joined the B. D. and Lynn Strait family on May 28 at St. Elizabeth's Hospital, Beaumont.

Strait is a section head-reproduction in Beaumont.

Cody is now at home with his parents near Sour Lake.





Garner graduates in Beaumont

John Todd Garner, son of W. W. Due, retired Beaumont Division substation operator, graduated from Westbrook High School this spring.

The youth is enrolled at Lamar University this fall.

McClusky wins riding awards

Grady "Buck" McClusky, senior engineering assistant in Beaumont, brought home a silver bucket filled with cups and ribbons last April when he entered the 5th Annual Nacogdoches Charity Horse Show.

McClusky and his horse, Mandate's Dividend, won 1st place in two events (novice hunter under saddle and novice hunter over fences) and 3rd place in adult equitation in the English riding competition. The points he accumulated in the three events made him the champion of the novice hunter division. His prize was a silver bucket.

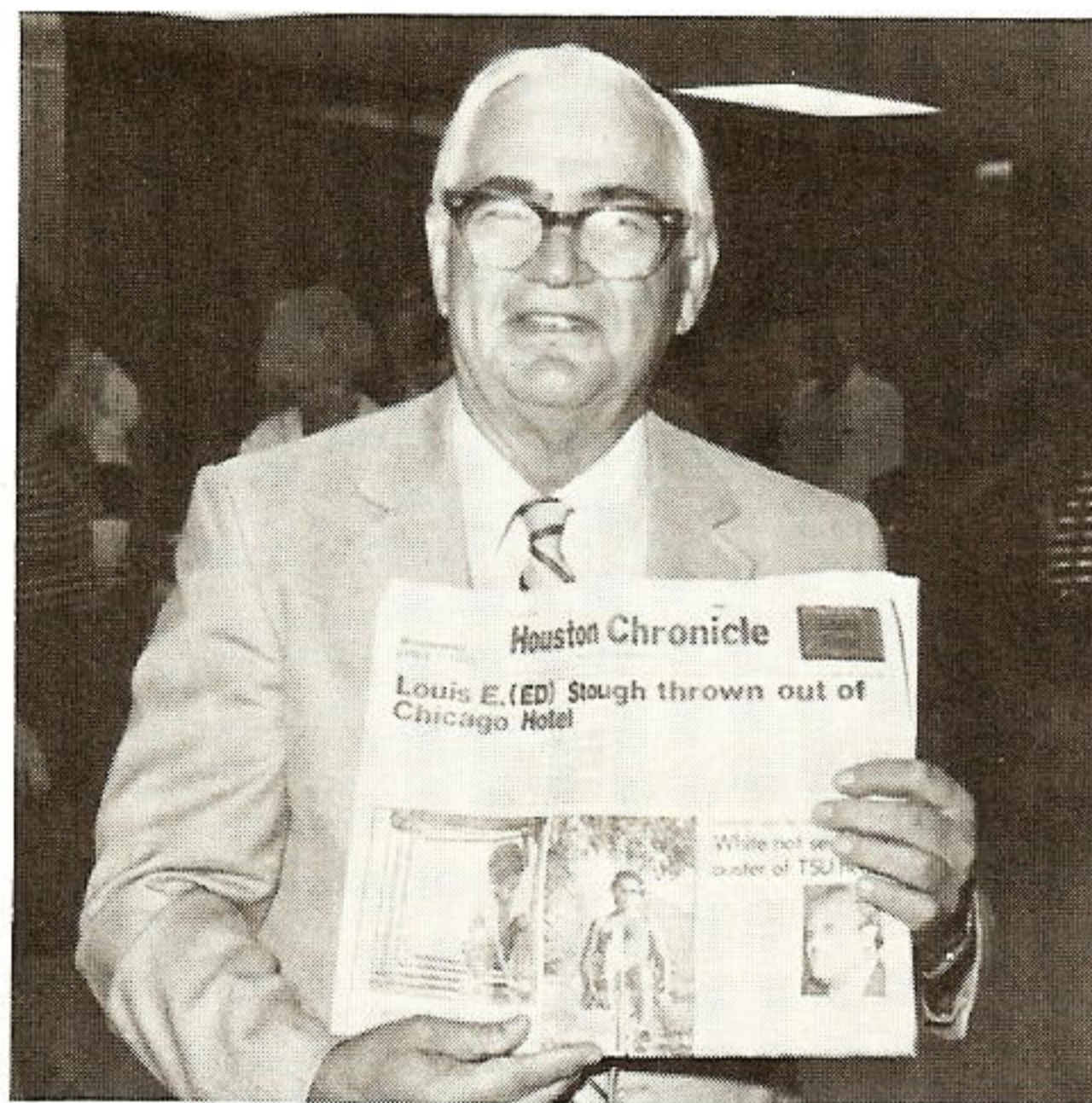


Riding is a family affair for the McCluskys, who live in Warren. Wife Linda is a riding instructor in Spurger and son Will, 3, has been riding since he was a baby. The McCluskys have a baby daughter, Katie.

Sabine roasts retiree Stough

GSU friends of L. E. "Abie" Stough honored the new retiree morning, noon and night in honor of his departure after 37 years with the company.

Stough, maintenance coordinator at Sabine Station, was honored at an early morning coffee and doughnuts get-together, a lunch in the Edison Plaza cafeteria and a July 29 sit-down supper and "roast."



Jim Derr, vice president-Power Plant Engineering & Design, presented a special edition of the Houston Chronicle to Stough. The make-believe issue featured Stough's name in a front-page headline.

Stahl reports new grandchildren

Ruth Stahl of Computer Applications, Beaumont, gained two grandchildren within nine days in May.

Her son, Scott, became the father of Erica Rene on May 17. The infant girl weighed 7



Grant and Ruth Stahl show off their new grandchildren (from left), Erica and Troy.

pounds, 3 ounces and measured 17½ inches.

Stahl's daughter, Shari Bernhardt, gave birth to a baby son, Troy Justin, on her father's birthday, May 26. The little boy weighed 7 pounds, 3 ounces and measured 19 inches. The proud grandpa, who shares the birthday, is Grant Stahl.

Softball team leads division

Three Division Accounting employees from Lake Charles belong to a winning team — the A&M women's softball team.

According to Kathleen Chelette, *Plain Talks* correspondent, Monica Thomas, Portia Pappion and Debra Towle helped their team win 1st place in Women's Division D. Their record was 13-3 for the season. A&M also won 1st place in the city division tournament.



Monica Thomas, Portia Pappion and Debra Towle (from left).

Clowning around with Leo Adams

by Mike Rodgers

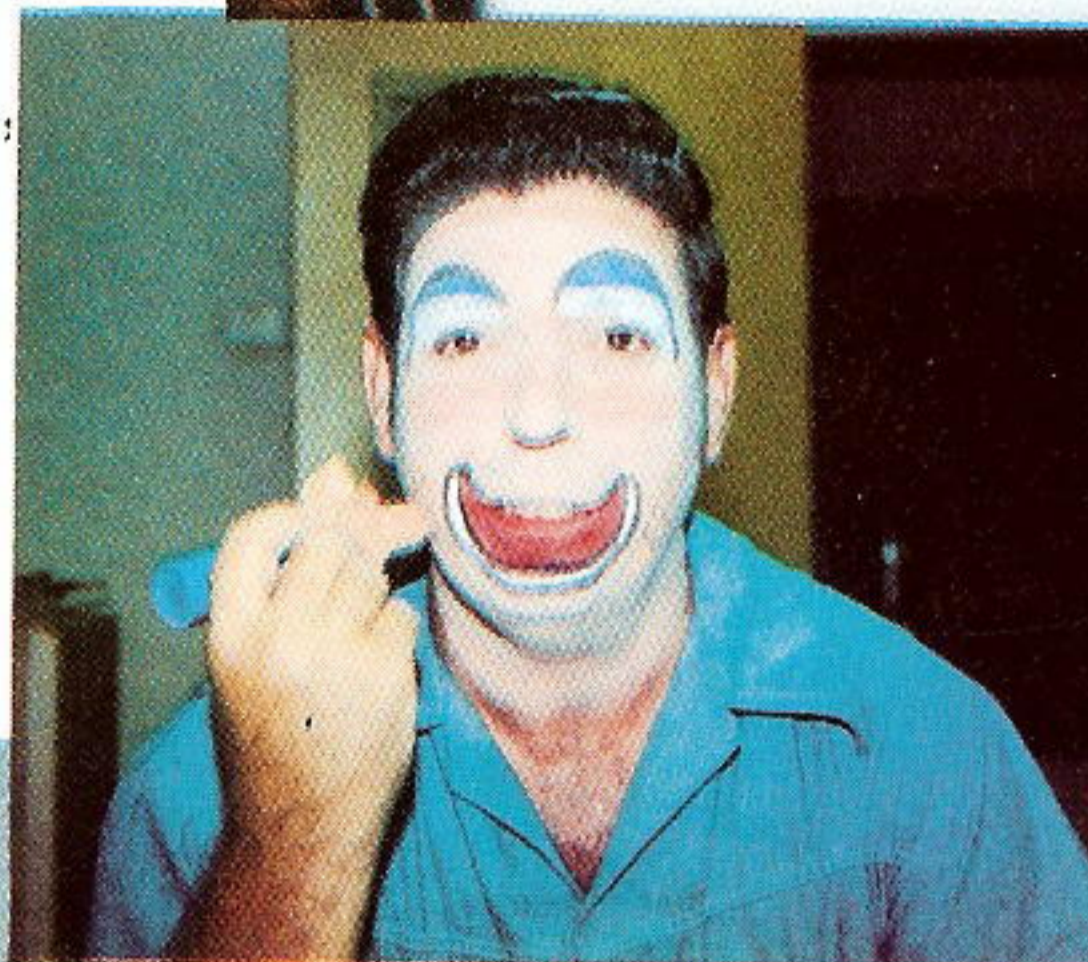
If you tell Leo Adams that he is “just clowning around,” you won’t hurt his feelings. Adams, T&D storeroom foreman in Western Division, is a familiar figure around Conroe as Be Bo, the Shriner’s clown. For the last five years Adams has given much of his spare time to sitting before a mirror putting on makeup, donning a multi-colored wig and stepping into his costume to entertain children and adults.

“I love children,” Adams says matter-of-factly about why he devotes so much time and energy to his favorite hobby. “Seeing a child laugh or visiting a nursing home are my biggest satisfactions,” he adds. As Be Bo, Adams makes appearances at an orthopedic hospital in Houston, the burn center in Galveston, birthday parties, parades and countless other special occasions. He takes special delight in marching in Conroe’s “Go Texan” parade each year because, he says “Many casual acquaintances don’t recognize me coming down the street.” He also participates in the five-mile “Fiesta Flambeau” parade in San Antonio.

“The highlight of a clown’s career is to perform in a circus,” says Adams, a veteran of the Shrine Circus. A skit performed



Leo Adams spends one hour transforming himself into Be Bo the clown.



by Adams and the other 49 members of the Houston chapter of Shrine clowns in last year’s circus was voted number one in the state. Clowns are very busy, making on the average of two appearances a month.

Adams is watching what may be the start of a family tradition.

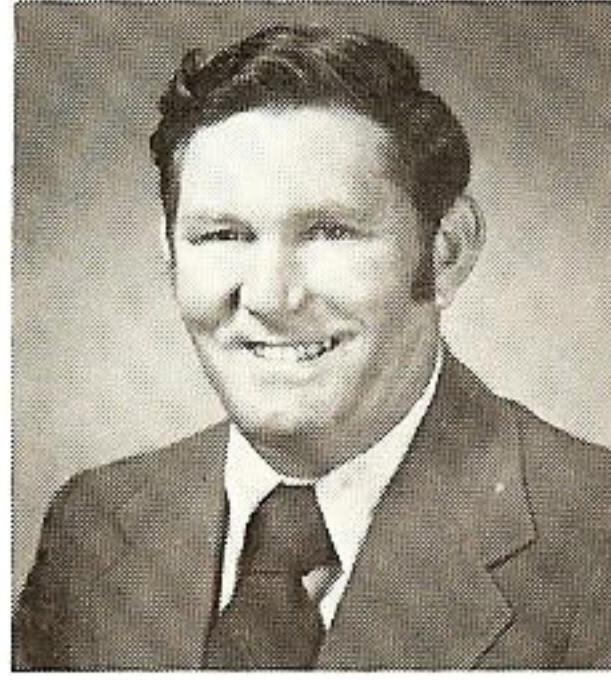
His youngest daughter, Vicki, is a GSU meter reader. It also means that “clowning around” runs in the family. His 3-year-old grandson recently took third place in a clown competition for his makeup and costume. Says the happy grandfather: “It was one of my biggest thrills.”

SERVICE AWARDS

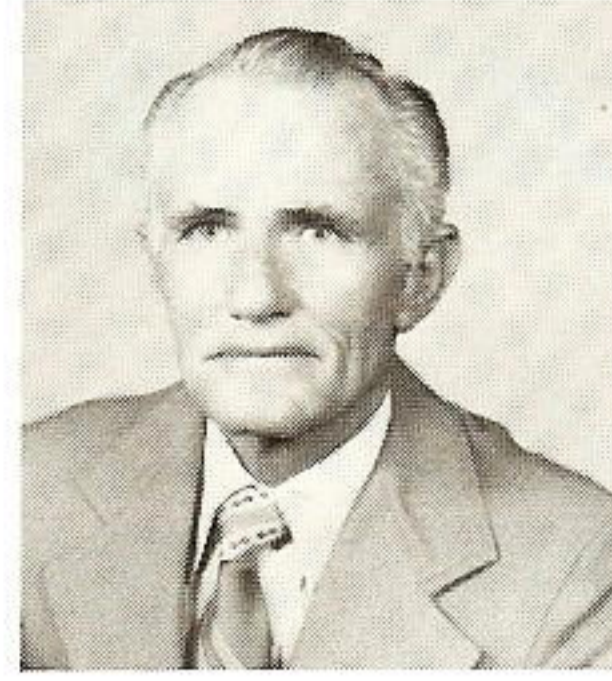
**30
years**



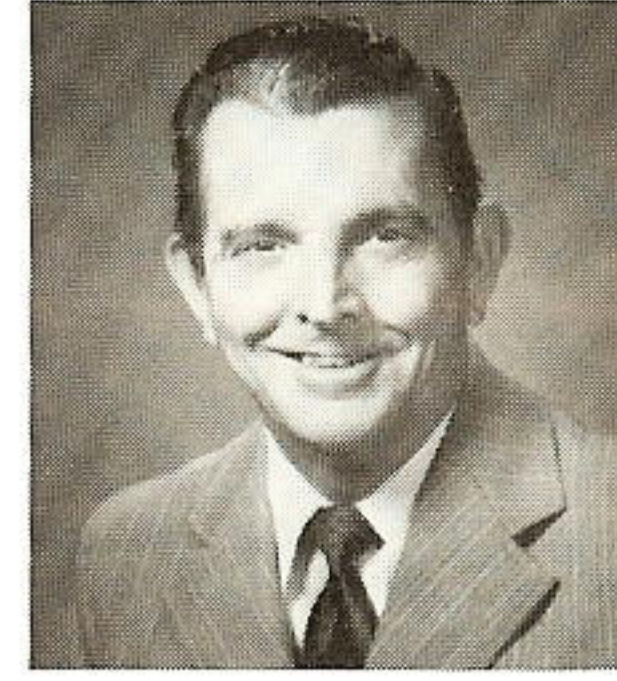
Martha C. Andrews
Division Accounting
Port Arthur



Dallas J. Boullion
Electric T&D
Dayton

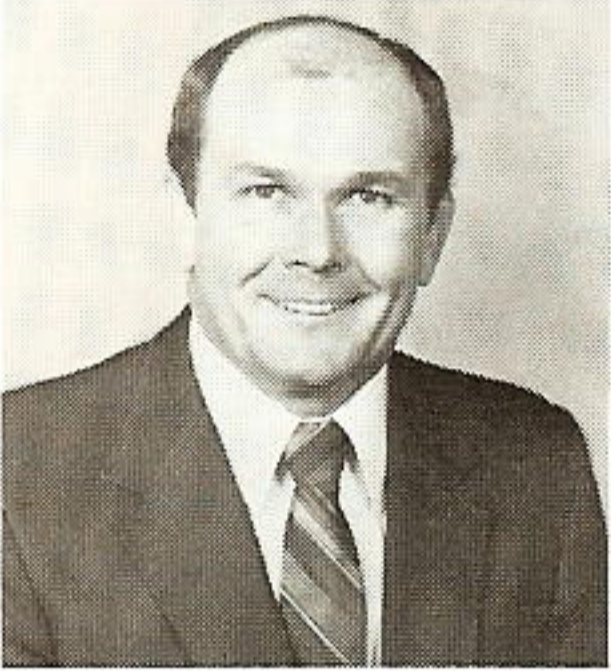


Virgil F. Foster
Division Operations
Conroe

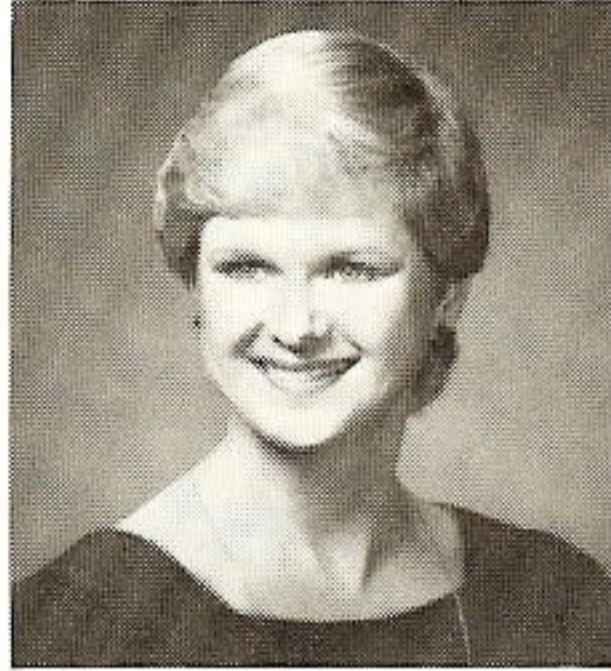


George A. Hickman
Electric T&D
Beaumont

**20
years**

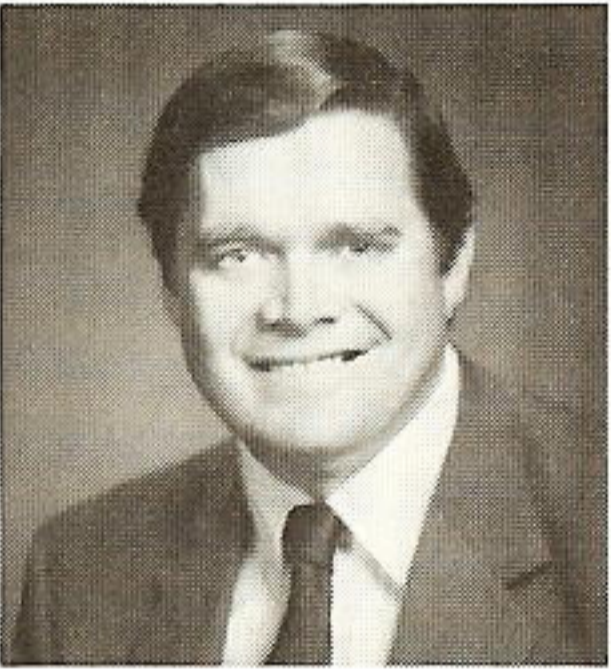


H. F. Eickenhorst
Electric T&D
Conroe



Sandra G. Rogers
Accounting Services
Beaumont

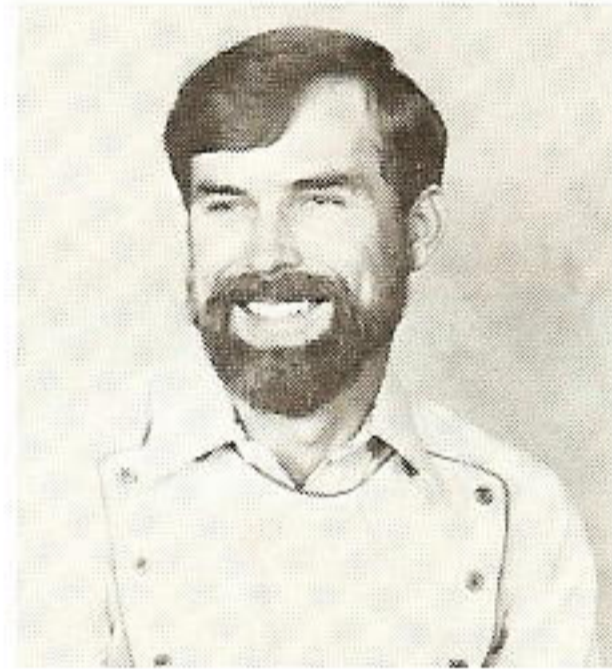
**10
years**



George K. DuBose
Division Accounting
Beaumont



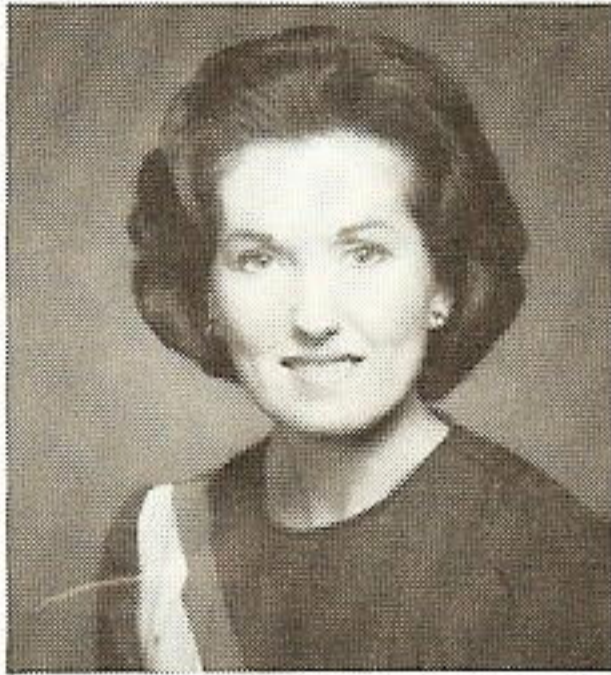
John E. Holmes
Corporate Services
Beaumont



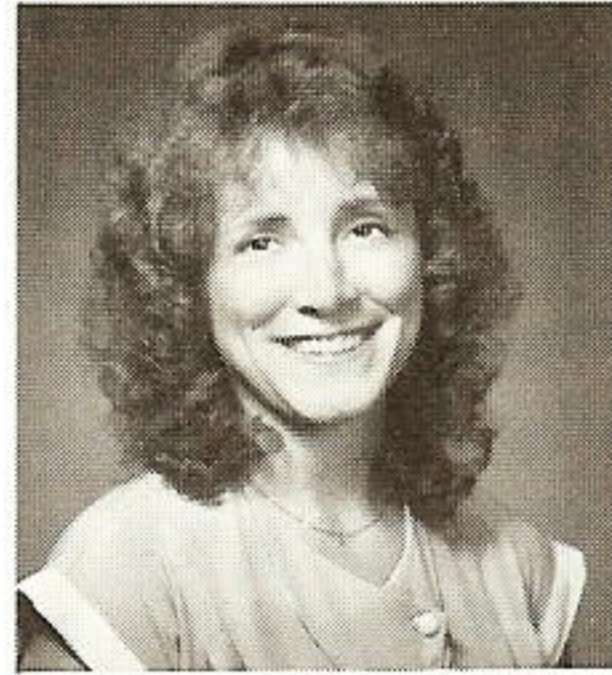
Thomas H. Koepke
Electric T&D
Conroe



Hellen B. Malvo
Accounting Services
Beaumont



Ella H. Reed
Human Resources
Beaumont



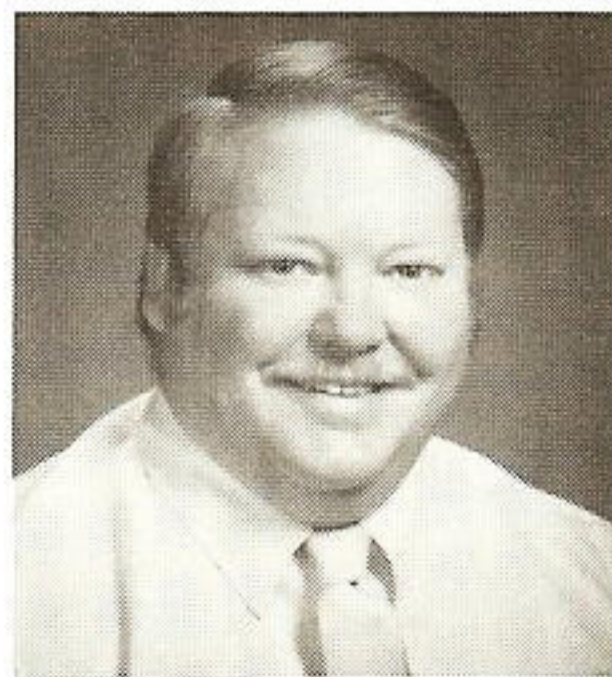
Marlene S. Robbins
Computer Applications
Beaumont



Thomas A. Roblin
Power Plant
Eng. & Design
Beaumont



Mary D. Sam
Accounting Services
Beaumont



William T. Weatherford Jr.
Accounting Services
Beaumont

Address Correction
Requested

PLAIN TALKS

P. O. Box 2951
Beaumont, Texas 77704

Bulk Rate
U.S. POSTAGE PAID

Beaumont, Texas
Permit No. 11

