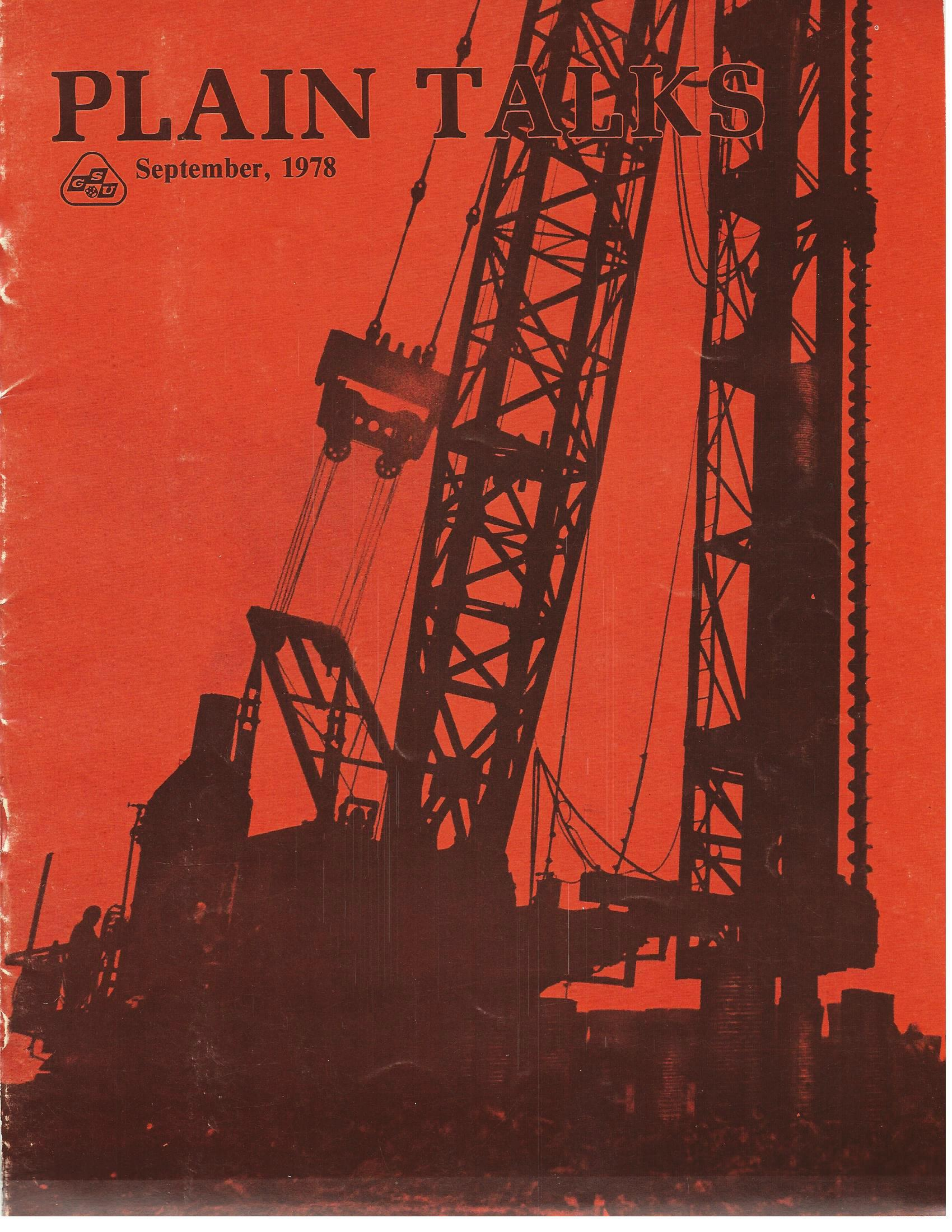


# PLAIN TALKS



September, 1978





# Welcome Aboard

## SYSTEM DEPARTMENTS

### Power Plant Eng & Design

Bonnin Myra B, Bmt, Stenographer - Overall

### System Engineering

Payne Stephen D, Bmt, Engineering Helper-Eng Des/DEC-drftg

### System Marketing

Fowler Kaye V, Bmt, Stenographer-Consumer Marketing

### Accounting Services

Barrett Judie B, Bmt, Clerk-Classifications

### Material Services

Tarver Maxine M, Bmt, Clerk-Overall

### Information & Data Services

Capo Mary F, Bmt, Tab Machine Operator-Data Sys Operns

## BEAUMONT DIVISION

### Division Production

Hubbard Charles, Bmt, Operator's Helper-Neches Sta-Operns  
Haynes Brenda H, Bmt, Laborer I-Neches Sta-Labor Crews  
Blankenship Paul R, Bmt, Laborer I-Neches Sta-Labor Crews  
Hoke Horace E, Bmt, Laborer I-Neches Sta-Labor Crews  
Galmore Reginald E, Bmt, Laborer I-Neches Sta-Labor Crews

### Distribution

Ogden Carolyn S, Bmt, Dept Clerk-T&D/Line  
Weems Marvin B, Bmt, Garage Mech 3/C-T&D/Garage  
Coward Milton E, Bmt, Laborer I-T&D/Labor Crews  
Cooper John E Jr, Bmt, Laborer I-T&D/Labor Crews  
Montgomery Gary C, Dayton, Helper-T&D/Labor Crews  
Reves Richard W, Orange, Helper-T&D/Labor Crews  
Williams Milton R, Orange, Shop & Field Tester-T&D/Meter

### Division Accounting

Richardson Glenda F, Bmt, Storeroom Assistant-Stores-SC  
Curtis Marion D, Bmt, Storeroom Assistant-Stores-SC  
Daigle Joseph L Jr, Bmt, Storeroom Assistant-Stores-SC  
Revea Rebecca B, Bmt, Meter Reader-Cust Accts  
Jones Ronald W, Orange, Meter Reader-Cust Accts  
Barefield Philip L, Silsbee, Meter Reader-Cust Accts  
Davenport Kenneth R, Silsbee, Meter Reader-Cust Accts

## PORT ARTHUR DIVISION

### Division Production

McQueen Michael R, Pt Arth, Equip-Oper-Sabine Sta-Operns  
Ross Lonnie Jr, Pt Arth, Equip-Oper-Sabine Sta-Operns  
Holston Robert L, Pt Arth, Mechanic Helper-Sabine Sta-Electl  
Mason Jerry C, Pt Arth, Mechanic Helper-Sabine Sta-Electl

### Distribution

Merwin George E, Pt Arth, Garage Mechanic 3/C-T&D/Garage  
Allen Merle R, Pt Arth, Laborer I-T&D/Labor Crews

### Division Accounting

Gonzales Martha, Pt Arth, Clerk-Cust Services  
Pamplin Cynthia P, Pt Arth, Clerk-Cust Services

## WESTERN DIVISION

### Distribution

Vercher Tommy J Jr, Conroe, Laborer I-T&D/Labor Crews  
McEwan Vincent, Conroe, Laborer I-T&D/Labor Crews  
Lee Walter E, Conroe, Laborer I-T&D/Labor Crews  
Everett Douglas W N Caney, Helper-T&D/Labor Crews  
Nunnally Donald E, Cleveland, Helper-T&D/Labor Crews

### Division Accounting

Manis Juanita L, Huntsvl, Local Office Clerk-Overall  
Kelley Carolyn B, Cleveland, Local Office Clerk-Overall

## LAKE CHARLES DIVISION

### Division Production

Wilrye Albert, L Chas, Equip-Oper-Nelson Sta-Operns  
Busby Albert D, L Chas, Equip-Oper-Nelson Sta-Operns  
Fowler Marvin W, L Chas, Repairman 2/C-Nelson Sta-Mechl

### Distribution

Rideaux Nellie S, L Chas, Dept Clerk-T&D/Meter  
Malbrough Arthur L, L Chas, Laborer I-T&D/Labor Crews  
Bennett Ronald L, L Chas, Laborer I-T&D/Garage  
Sonnier Matthew L, L Chas, Laborer I-T&D/Labor Crews  
Callahan Dexter J, Lafay, Helper-T&D/Labor Crews

### Division Accounting

Wright Kathleen E, L Chas, Clerk-Cust Acctg

## LAKE CHARLES SYSTEM DEPARTMENTS

### Power Plant Construction

McMichael Jackie L, L Chas, Dept Clerk-Overall

## BATON ROUGE SYSTEM DEPARTMENTS

### Material Services

Prescott Jamie A, B Rouge, Dept Clerk-Overall

## BATON ROUGE DIVISION

### Division Production

Portier Robert J, B Rouge, Electrician 2/C-La Sta-Electl  
Weiland John B, B Rouge, Laborer I-La Sta-Labor Crews  
Boles Freddie L Jr, B Rouge, Laborer I-La Sta-Labor Crews  
Gordon Dale W, B Rouge, Repairman 2/C-W/Glen-Mechl  
Cason Clopton L Jr, B Rouge, Repairman 2/C-W/Glen-Mechl  
Willie Henry H, B Rouge, Electrician 2/C-W/Glen-Electl  
Fransen Stephen J, B Rouge, Electrician 2/C-W/Glen-Electl  
Bourque Gregory W, B Rouge, Laborer I-W/Glen-Labor Crews  
Adam Mark D, B Rouge, Laborer I-W/Glen-Labor Crews  
Lupo Michael J, B Rouge, Laborer I-W/Glen-Labor Crews  
Pratt Steven D, B Rouge, Laborer I-W/Glen-Labor Crews

### Gas Department

Gates Morgan T, B Rouge, Laborer I-Dist-Labor Crews  
Marino Charlie D, B Rouge, Laborer I-Dist-Labor Crews  
Plaisance David B, B Rouge, Laborer I-Dist-Labor Crews  
Causery Tony M, B Rouge, Laborer I-Dist-Labor Crews

### Distribution

Littlefield Merlin J, B Rouge, Garage Mechanic 3/C-T&D/Garage  
Westmoreland Alton E Jr, B Rouge, Garage Mechanic 3/C-T&D/Garage  
Lewis James H, B Rouge, Helper-T&D/Bldg & Grnds-SC  
Bourg Alan E, B Rouge, Laborer I-T&D/Labor Crews  
Smith James R, B Rouge, Laborer I-T&D/Labor Crews  
Breux Dwayne M, B Rouge, Laborer I-T&D/Labor Crews

### Division Marketing

Husband Melissa J, B Rouge, Dept Clerk-Consumer Service

### Division Accounting

Levet Joan F, B Rouge, Clerk-Cust Accts  
Fournet Jon M, B Rouge, Clerk-Cust Accts  
Nance Martha K, B Rouge, Clerk-Cust Accts  
Hall Nelda J, B Rouge, Clerk-Cred & Coll  
Caston Eddie L, B Rouge, Meter Reader-Cust Accts  
Murray Fred R Jr, B Rouge, Storeroom Assistant-Stores (Choctaw)  
Thomas Barry L, B Rouge, Laborer I-Stores  
Brown Ella W, Pt Allen, Local Office Clerk-Overall

## EMPLOYED

Cole Robert J, Bmt, Training Representative Personnel Servs  
Chapaneri Kishor L, Bmt, Engr-System Prod-Tech Servs  
Bruschi Gene R, Bmt, Start Up Plng & Sched Engr-Start Up & Test R/Bend  
Greene Craig H, Bmt, Plant Elect Engr-R/Bend Proj  
Glazer James M, Bmt, Project Engr-Pwr Plant Eng & Des-R/Bend  
Lammons Charles H, Bmt, Engineer-Pwr Plant Eng & Des-Elec I&C Engr  
Child Christopher C, Bmt, Financial Analyst-Fin Svs  
Davis Leonard B, Bmt, Petroleum Engr-Varibus Operns  
Herndon Joe L, Bmt, Administrative Acct-Acctg Svs/Business Sys  
Murray David T, Conroe, Engineer-Div Prod-L/Creek  
Psecik Joe D, Conroe, Administrative Acct-Div Acctg  
Hebert Clark J, B Rouge, Engineer-Div Prod-La Sta  
Shread Richard R, B Rouge, Construction Supvr-Pwr Plant Constr-W/Glen  
Wimberley Joe E, St Francvl, Superintendent-Constr-Pwr Plant Constr-W/Glen  
Fruge Richard W, B Rouge, Engineer-T&D/Engrg  
Todd Kyle E, L Chas, Engineer-T&D/Engrg



# PLAIN TALKS

Volume 56 - Number 7 — September, 1978

Published monthly for employees and annuitants of Gulf States Utilities Company. Produced within the Public Affairs Department, Jack F. Worthy, vice president, by the Communications Department, James S. Turner, manager. Address all communications, including requests to reprint materials, to Editor, PLAIN TALKS, Gulf States Utilities Company, P. O. Box 2951, Beaumont, Texas 77704. Phone (713) 838-6631.

## Editor

Gary Dias

## Contributing Editors

J. Patrick McMeel

Rick Harvin

## Artist

Ken Haynie

## Correspondents

If you have any news for "Plain Talks," simply send the information to one of the following local reporters. They will be happy to assist you in getting the material to the editor.

**BATON ROUGE:** Margie Force (T&D), T. Boone Chancy (T&D), Melanie Hima (T&D), Jack Gautreaux (T&D), James W. Bello (T&D), GERALYN WILLIAMS (Gas), Glenda Boyd (Acct.), Mary Smith, Robert Graves (Storeroom), Susan Wilks, Debbie Lynn (Engr.), Linda Nelson (Meter), Rhonda Cheek (Govt. St.)

**BEAUMONT:** Bill Toups (S.C.), Carolyn Motl (T&D), Ann Ogden, Edy Mathews, Dorothy Nowell, Carolyn Thaggard, Gene Russell

**CALVERT:** Betty Dowell.

**CLEVELAND:** Edd Mitchell

**CONROE:** Frances Elliot, Marilyn Key

**DENHAM SPRINGS:** Lenelle Juban

**GONZALES:** Billie Fortenberry.

**HUNTSVILLE:** Karen Morley

**JENNINGS:** Earl Mayfield.

**LAFAYETTE:** Mona Burris

**LAKE CHARLES:** Billie Belvin (Garage), Edith Patterson (T&D), Janel Followay

**LA. STATION:** Marilyn Nicholson

**LEWIS CREEK:** D. W. Rutherford

**MADISONVILLE:** Jean Tinsley

**NAVASOTA:** Betty Dickschat

**NECHES STATION:** Terry Bond, Ed Foster

**NELSON STATION:** Martha Caldwell.

**NEW CANEY:** Diana Winkelmann, Paul Mosley

**ORANGE:** Doris Womack

**PORT ALLEN:** Adele Vavasseur.

**PORT ARTHUR:** Sue Williams, Lorraine Dunham (S.C.)

**SABINE STATION:** Darlene Faires,

Fred Kressman

**SOMERVILLE:** Mary Brock

**SULPHUR:** Pearl Burnett

**WILLOW GLEN:** Dora Landaiche, James Veatch

**WOODVILLE:** Alene Cole

**ZACHARY:** Myra Ponthier

## INSIDE FRONT COVER

Welcome Aboard

## Page 2

### THE NELSON STATION COAL PROJECT

At first glance, the Nelson Coal Project may seem to be just an ordinary construction project but, while it may appear humdrum next to the glamour and excitement which surrounds nuclear projects, the fact is that the job is one of the most complex in GSU history.

## Page 6

### N.E.W.? Why Not!

A Lumberton, Tex., family, the Robert Whynots, recently became the first homeowners in the GSU service area to have their home certified as energy efficient under the guidelines of the National Energy Watch Program.

## Page 8

### GSU NEWS

Four executive changes announced, page 8.

Company cancels nuclear construction at Blue Hills, page 9.

Thrift Plan, page 10.

Annuitants attend Beaumont division energy seminar, page 10.

Navy veteran named chairman's technical assistant, page 11.

Hodges appointed vice president of Varibus, page 11.

GSU's College Aid Program, page 12.

Three Gulf Staters retire, page 13.

Deaths, page 14.

## Page 15

### PEOPLE ON THE MOVE

## Page 21

### SERVICE AWARDS

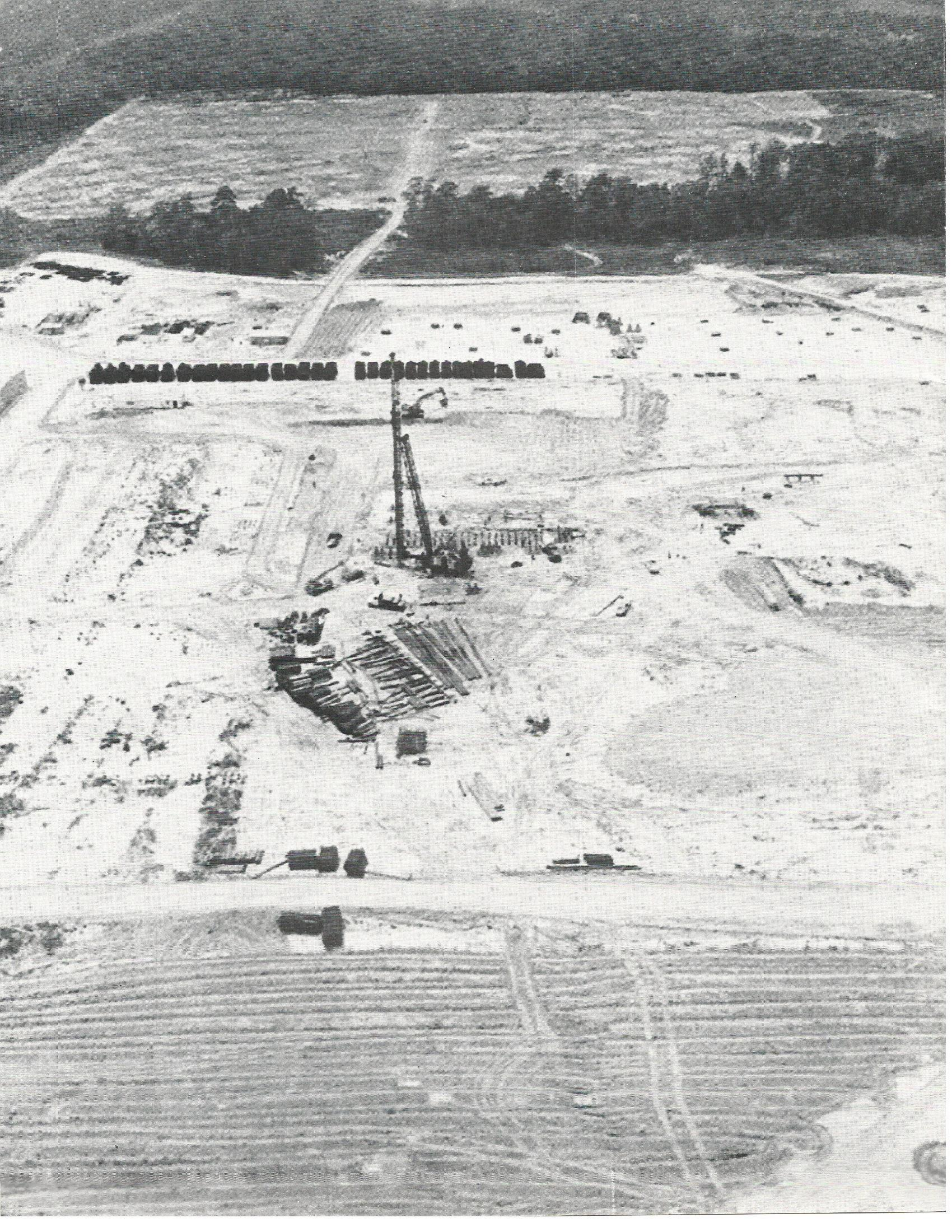
## Page 23

### COFFEE CUP

**OUR COVER:** Only the sight and sound of a huge pile driver at work gives any clue that a multi-million dollar construction project is scheduled to get underway at Nelson Station in Westlake. Soon, many tons of heavy equipment, material and over a thousand construction workers will dot the landscape to shape one of the most complex projects ever undertaken by the company. (See page 2)

Member:  
Houston







# the Nelson Station Coal Project

**Turning to coal for boiler fuel may sound simple to those raised in the Sun Belt, but the project is the most complex job in our company's history.**

It's an easy mental process to underestimate the impact of construction of a coal-fired electric generating plant. Not many people along the sun belt have ever seen one. The announcement is worth a small blurb in the newspaper and maybe a 20 or 30 second spot on the local television news. It's not nearly so exotic an idea as that of a nuclear powered plant . . . ho hum. So what!

The fact is that the construction and operation of a coal-fired plant such as the one that is currently underway at Nelson Station near Lake Charles is a massive undertaking. The construction project almost certainly will top the \$350 million mark, provide over a thousand jobs during the construction phase, require GSU to become quite involved in the transportation and mining of coal, and will result in the formation of new technical skills jobs for some current company employees and some who have yet to be hired.

To those in the know, those who must plan its construction, finance the project and oversee every move from start to finish, the attitude is anything but indifferent. It's exciting and demanding, a whole new ball game with rules unlike anything our company has seen before.

"The complexity of a coal plant is enormous when compared with what we have been using," said Joe Robichau, Nelson Coal Project manager. "For instance this plant, when operational in April of 1982, will require approximately 148 people to run it. That is far more than is required by any other single gas or oil fired generating unit we now have."

Robichau pointed out that coal fired plants need a great deal more care and maintenance simply because there is much more to them than there is in our existing units. "More moving parts, so to speak," said Robichau.

He wasn't exaggerating. Some of the mind boggling statistics of the plant include the fact that just the boiler, excluding the 50-story tall chimney that will be constructed to go with it, will be taller than the main office building in Beaumont at 260 feet. The boiler height is needed so that total combustion of the pulverized coal powder can be attained, and to collect the flyash by-product of that combustion.

Sabine Station (see July-August PLAIN TALKS), Willow Glen Station and Nelson Station all have stacks in the 400-foot range, but the coal unit stack will be 100 feet higher. The chimney will be a

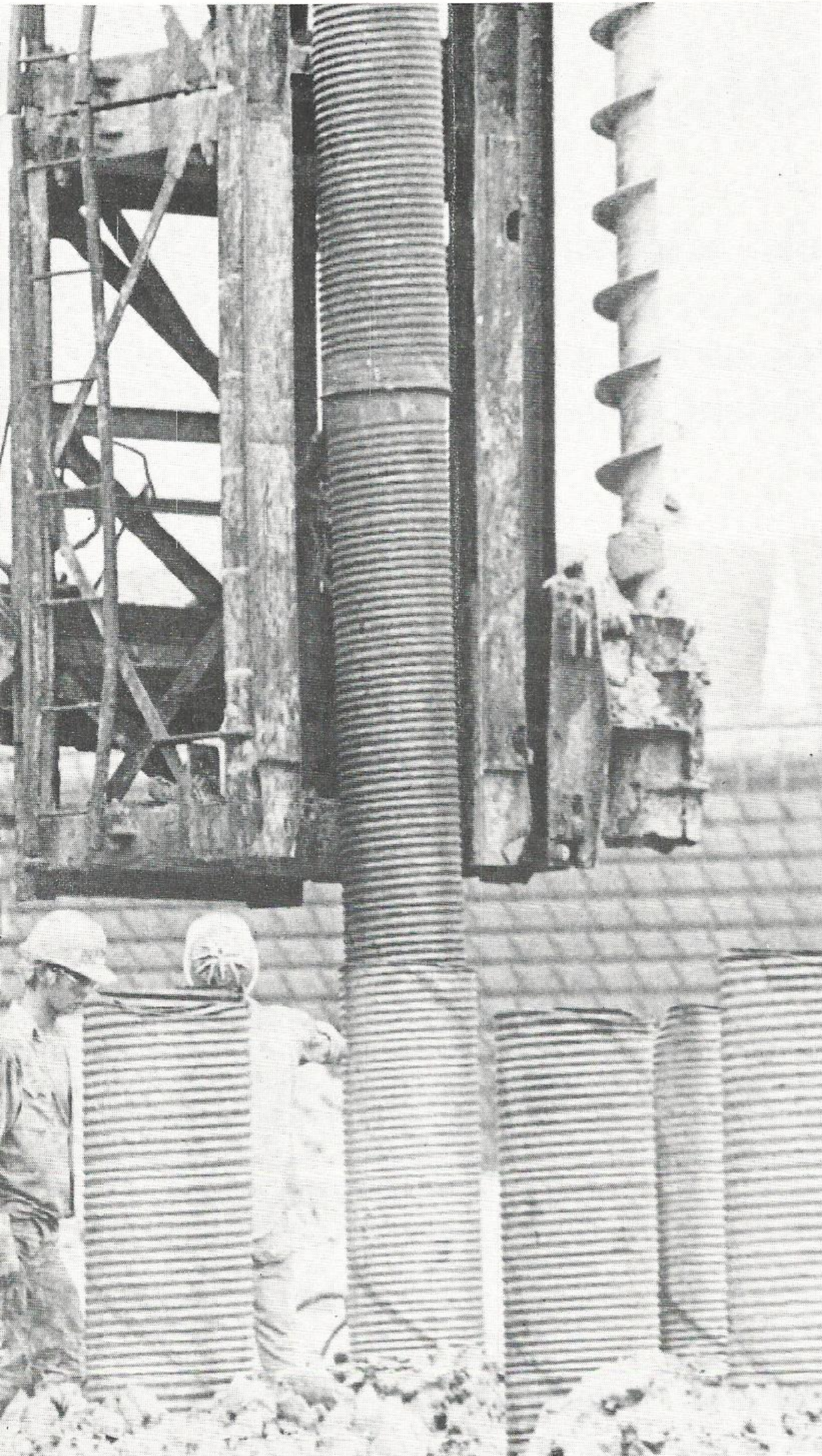


. . . Nelson Station

**Giant pile drivers are on site as construction workers begin the task of establishing the foundation of the Nelson #6 unit.**







double-flue affair so that it can also be utilized by the #5 unit which will be constructed at a later date. "You ought to be able to get some view from the top of that chimney," said Robert Guillory, acting construction supervisor, as he looked at the existing 400-foot stack.

Another major visual addition the coal plant will have that the others do not have is a large conveyor belt system. The system will be capable of moving 3,000 tons of coal per hour over a quarter-mile distance. This coal will be stored in an "active containment hopper" for immediate use. The coal will be pulverized and fed into the boiler by another conveyor system. Coal not immediately placed in the active containment hopper is stored at the point of delivery or in a reserve storage area to maintain a 60-day supply in reserve in case delivery of the coal stops for any reason.

Delivery of the coal from the Jacobs Ranch mine near Gillette, Wyoming is another massive project in itself. In all probability, the company will buy outright, or lease, approximately 605 railroad coal cars. This is enough for five, 110-car trains with a 10 percent reserve.

Each train will carry approximately 11,000 tons of coal, about 100 tons to a car. Each car is 53 feet in length and equipped with a swivel type coupling system so that the cars can be unloaded at the site merely by rotating the car to an upside down position. The rotary car dumping system at Nelson will have the capability of unloading the entire 110-car train in just four hours.

This sounds like a lot of coal, but it isn't. Unit #6, running at its rated capacity for a 24 hour period will burn approximately 320 tons of coal per hour. Multiply that by two units times 365 days and THAT's a lot of coal on an annual basis.

Add to all of this such equipment as dust suppression devices, giant precipitators to clean the exhaust, flyash collection equipment and more conveyor systems to transport flyash to storage areas, and a hundred other items gas and oil burning units don't need, and you have a very complicated power plant indeed.

Coal generation is a whole new ball game, and the people who must watch over this baby from conception to operation are anything but indifferent. They call it pride.

. . . J. Patrick McMeel



# N.E.W.?

## Ask Why Not!

**A Lumberton family, the Whynots, said why not build a N.E.W. home? So they did, and last month they became the first in the Gulf States service area to have their home certified as energy efficient under standards of the National Energy Watch program.**

**A home that's both beautiful and energy efficient at an affordable price. Why not?**

If you're a bit skeptical, just ask why not — Robert Whynot, that is, of 100 Park Place in Lumberton, Tex. Whynot recently became the first person in the GSU service area of southeast Texas and south central Louisiana to have his home officially certified as energy efficient under standards of the National Energy Watch (N.E.W.) program.

Whynot's new home in Lumberton's Candlestick subdivision was inspected by Consumer Service Representative Jack David of GSU's Silsbee office during and after its construction for compliance with N.E.W. standards.

"The building earned 87 points and that's 12 more than necessary for a new home to qualify," said David. Existing homes (technically any home that can't be inspected during construction) need at least 60 points to qualify for certification.

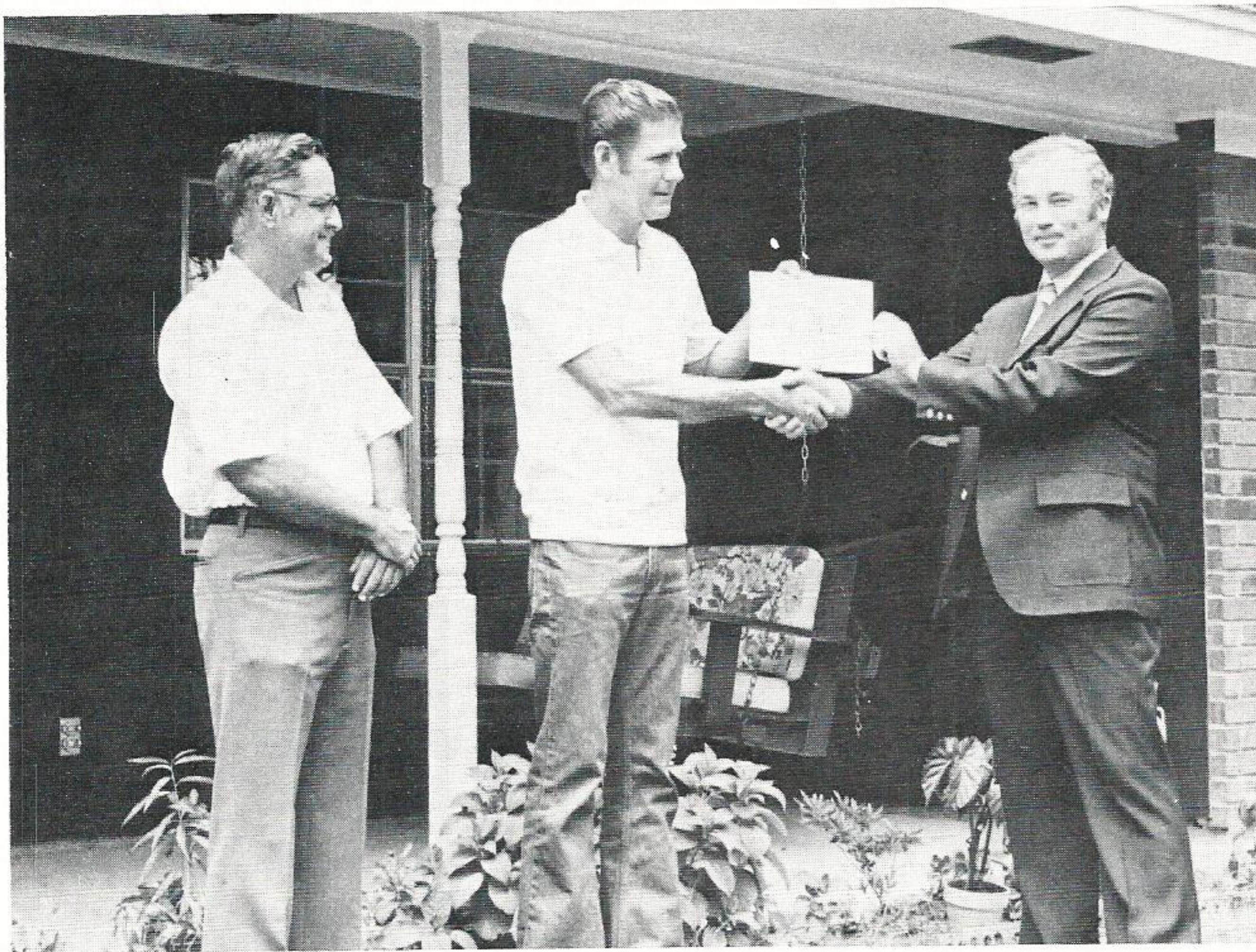
The Whynots built their beautiful 1,904 square-foot home almost entirely by themselves.

"I've been doing woodworking for 25 years and working with my hands just comes natural," said Whynot, who is employed at Church Pattern Works in Beaumont where he builds wood patterns for foundries.

Actually, the home turned out to be a "family project" with Mrs. Whynot and 16-year-old son



**Lumberton Mayor Jerry Byrom (right) presents Whynot with a certificate certifying that Whynot's home complies with National Energy Watch standards for new homes. GSU Consumer Service Representative Jack David looks on. Whynot's home in Lumberton, Tex., earned 87 points to qualify for certification.**



Mike both pitching in.

Mrs. Whynot helped install the insulation, something used thoroughly enough to earn 23 out of a possible 25 points on the N.E.W. rating form. R-values for the home's insulation are R-26 for the ceiling area, R-11 for the floor crawl space and R-18 for the exterior walls.

She also laid the tiles in the entryway and helped with the liquid sealer she and her husband used to fill in around the holes drilled for the home's wiring. "I think I still have some of that stuff on my hands," joked Mrs. Whynot.

The liquid sealer, coupled with a complete caulking and weatherstripping job, enabled the home to earn the maximum 21 points in

this area of energy efficiency.

Mike did much of the work on the sheetrock roof. He also completely restored an antique heater found by his mother and, although it doesn't contribute to the energy efficiency of the home, the classic piece is proudly displayed in the family's new living room.

Even though the home utilizes an energy efficient heat pump as its primary mode of heating and cooling, Whynot installed an attic fan in the ceiling of the huge walnut-panelled living room. Not only is this a decorative touch but, said Whynot, his energy-conserving wife turns off the cooling system when it's not too hot and uses the attic fan alone to

cool the room.

Another decorative but functional addition to the living room is the fireplace Whynot installed with a tight sealing damper. "When it gets cold, the fireplace by itself is enough to heat the whole living room," said Whynot.

After six months work, the house was ready for occupancy. "The house wasn't completely finished then," said Whynot, "but it was ready for us to move in to."

Whynot said he felt the energy conservation ideas included in the N.E.W. program were good and that they would help his family conserve electricity.

"It was well worth the effort," he added.



## Four Executive Changes Announced

Don Crawford, GSU chairman of the board, announced four executive organizational changes August 10 at the board of directors meeting in Orange.

Charles D. Glass, formerly vice-president-customer services, was named to the new position of vice president of the Beaumont division. Succeeding Glass as vice president of customer services is Aubrey Sprawls, formerly Western division manager. John Conley, formerly operating superintendent of the Beaumont division was picked as the new Western division manager while Ward McCurtain, formerly Beaumont division manager, has been appointed to assistant to the vice president of public affairs.

All changes were effective September 1.

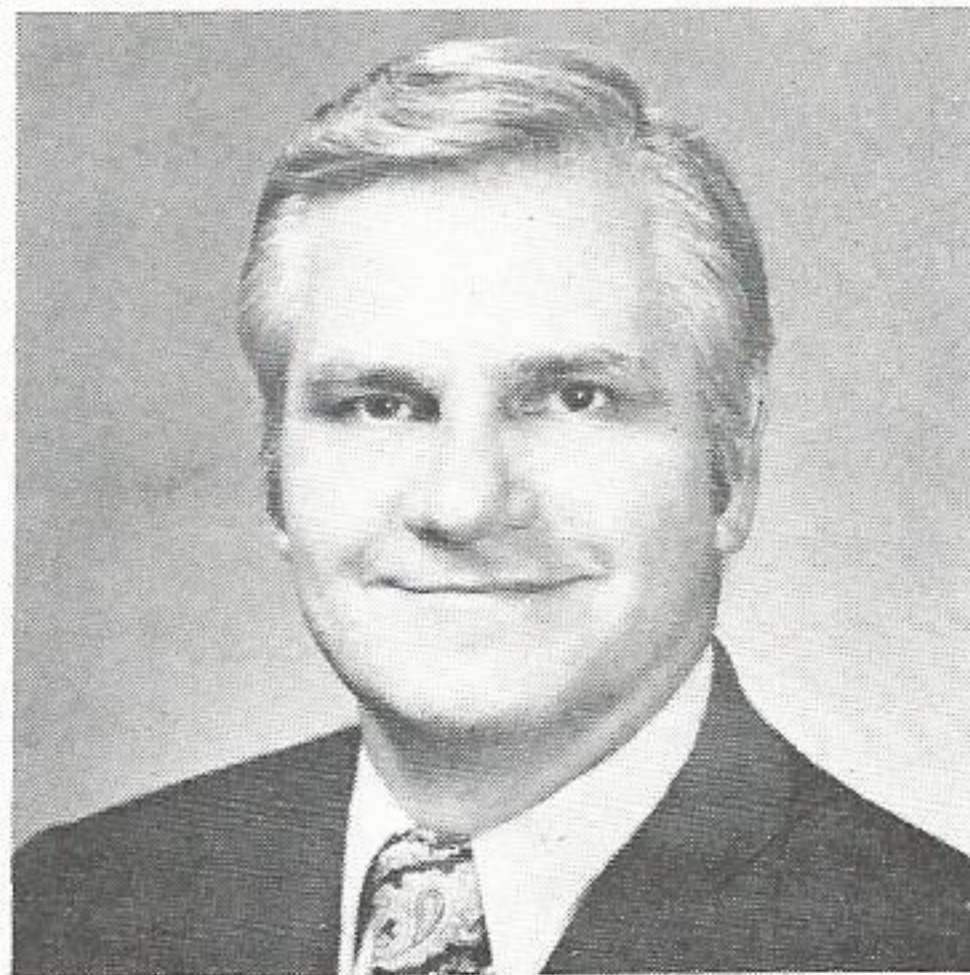
Glass joined the company as a junior farm representative in Beaumont in 1949 after receiving his bachelors degree in engineering from Texas A&M. He was transferred to Lake Charles later that year and promoted to farm representative in 1951. In 1954, Glass was called to active Air Force duty and served until 1956 when he rejoined the company as an industrial engineer in Lake Charles.

Glass climbed through a number of managerial positions in Lafayette, Baton Rouge and Beaumont until 1975 when he was promoted to vice president-customer services.

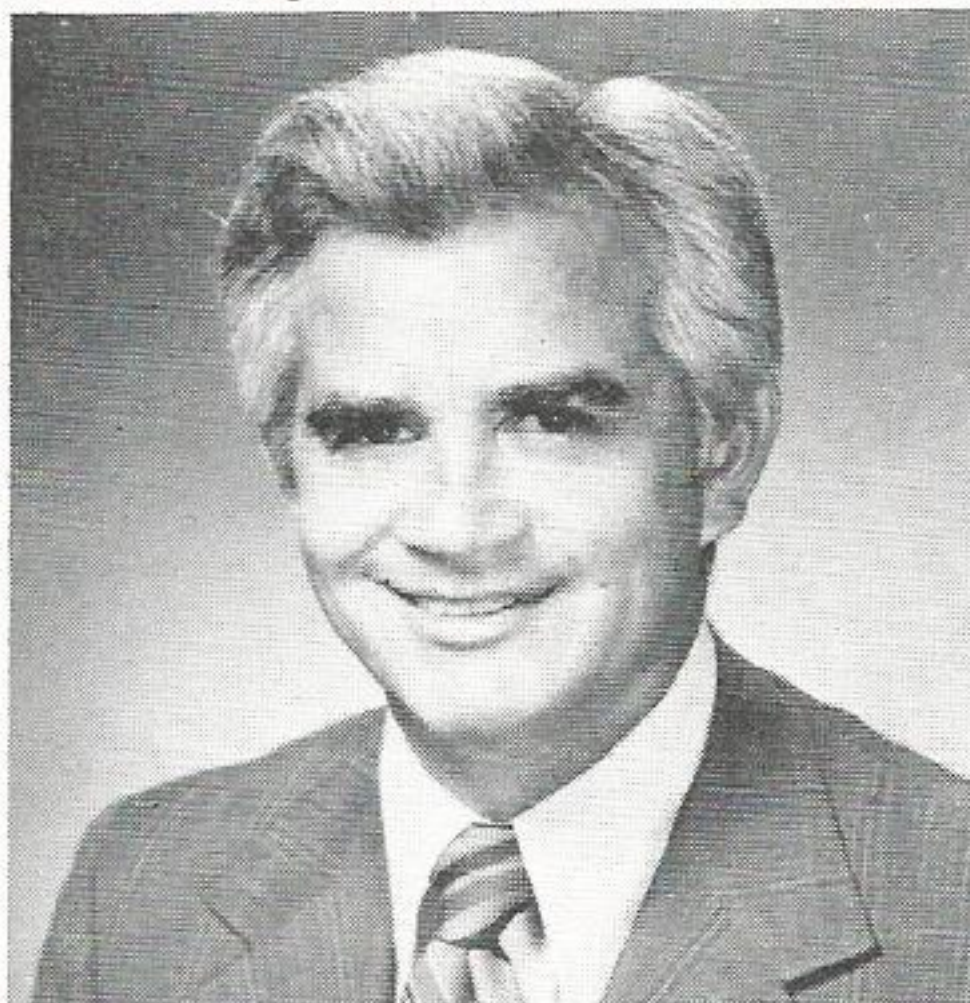
A native of Mt. Pleasant, Tex., Glass completed the University of Michigan's Public Utility Executive Program in 1969. He has been active in several civic organizations including the Kiwanas Club, United Givers and various chambers of commerce. Glass is a member of the Marketing Executive's Conference and the Texas Association of Business.

He and his wife, the former Gretchen Elkins of Lake Charles, have three children.

A native of Clovis, N.M., Sprawls also began his GSU career in 1949 in Beaumont division sales as a farm representative. Like Glass, he was graduated from Texas A&M in 1949 with a bachelors



**Charles D. Glass**



**Ward McCurtain**

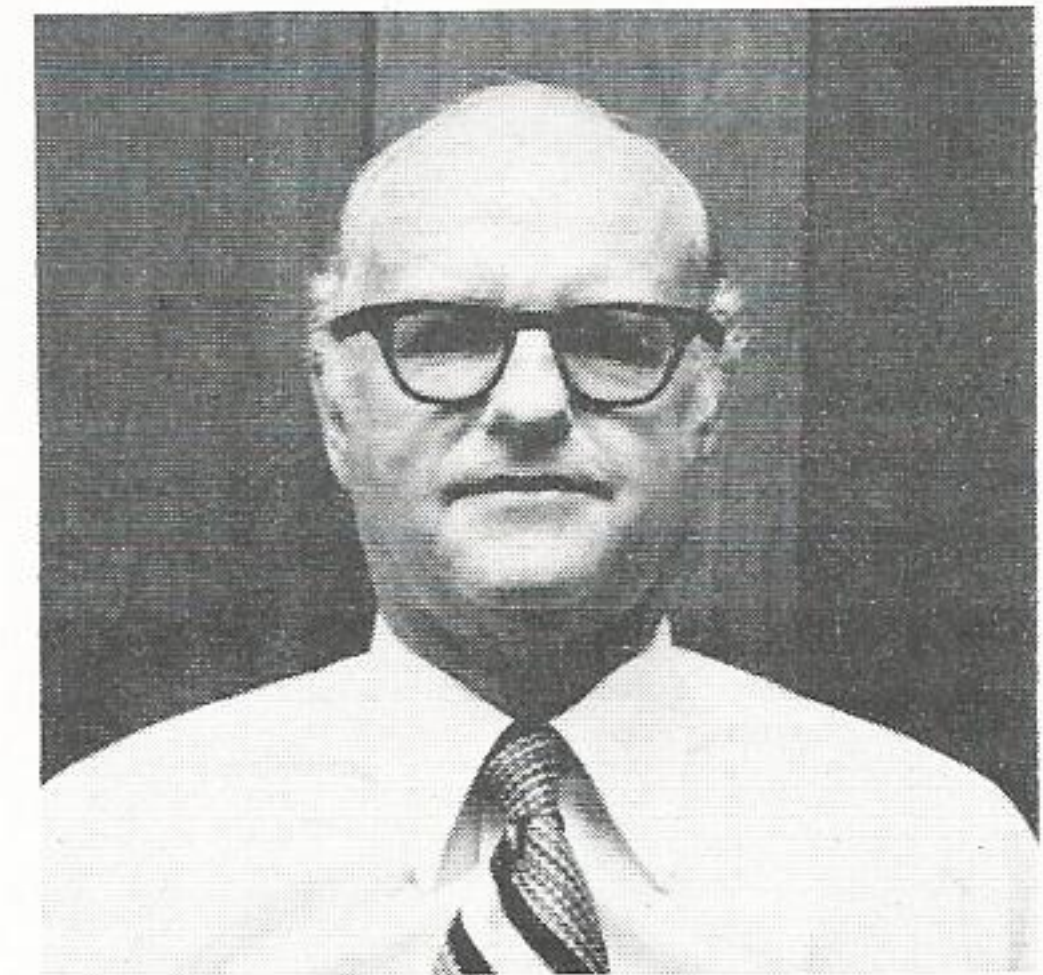
degree in engineering.

Before becoming Western division manager in September of 1977, Sprawls served in a number of other capacities, including industrial engineer, agricultural engineer, area development engineer, district superintendent, division director of area development and division superintendent of sales. He has also been worked in System Marketing as director of residential and commercial sales and director of consumer marketing.

An Army veteran, Sprawls commanded an armored tank company during the Korean conflict.

He is married to the former Jean Boernke of Wausau, Wisc., and the couple has three children, Susan Kay, Mary Margaret and David Duane.

Sprawls has been active in the Rotary Club and the Montgomery County United Fund. He completed Georgia Tech's Public Utility Executive Course in 1961.



**Aubrey Sprawls**



**John Conley**

Conley is a 1958 graduate of Louisiana State University with a bachelors degree in electrical engineering. He held various engineering assignments in Beaumont, Lake Charles and Baton Rouge from 1958 until 1968 when he was promoted to operating supervisor of Baton Rouge T&D operations.

A native of Baton Rouge, Conley was transferred to Port Arthur in 1973 as assistant operating superintendent of Port Arthur T&D. In 1974, he was promoted to operating superintendent.

Conley had been operating superintendent of Beaumont T&D since October of 1977.

He is married to the former Mary Janney of Baton Rouge. They have four children, Cathy Kimball, Judy Garcia, John Jr. and Pat.

The Navy veteran is a past president of the Sabine-Neches chapter of the LSU

(Continued on page 13)



## Labeled financially risky

# Blue Hills Plans Cancelled

GSU has announced cancellation of plans to build two proposed nuclear generating units at the Blue Hills site in Newton County, Texas.

The announcement was made August 10 at the board of directors meeting in Orange by Board Chairman Don Crawford.

The two nuclear units were to be built in Newton County in East Texas, south of Toledo Bend reservoir. Costs associated with the cancellation of the units, said Crawford, amount to about \$25 million.

"The financial risks associated with the Blue Hills project increased to the point where it became unlikely that we could

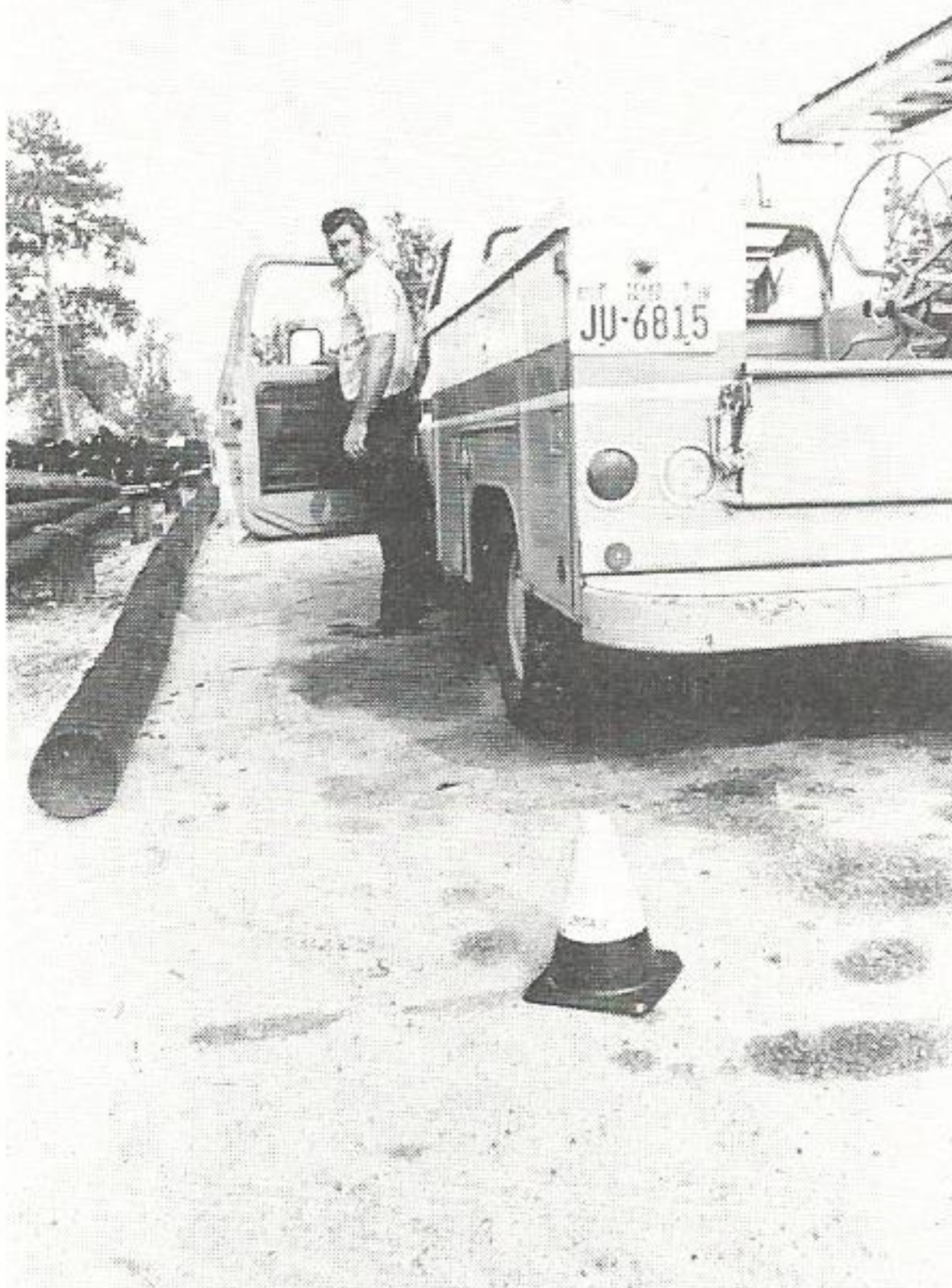
finance it without having an adverse impact on the construction of River Bend #1 nuclear unit near St. Francisville, Louisiana and the Nelson #6 coal unit near Lake Charles, Louisiana," said Crawford.

"The uncertainties associated with securing adequate rate relief, particularly in Louisiana, and the currently confusing national energy policy towards nuclear power, have combined to prompt this decision regarding the Blue Hills project. Also load growth is not expected to reach the levels anticipated at the time the units were planned, which was prior to the oil embargo of 1973. We will retain the Blue Hills site, secure necessary environmental

permits and maintain it as a site for future nuclear generating units," said Crawford.

River Bend #2 is being retained as a future generating unit and a final decision on its construction schedule will be deferred until the end of 1980.

In other action, the board declared a quarterly dividend of 31¢ per share on common stock. This marks the 124th consecutive common dividend payment. Regular dividends on all issues of preferred stock were declared also. All dividends are payable on September 15, 1978, to stockholders of record August 23.



A six month "traffic cone" experiment is underway in Cleveland involving all district employees who drive company vehicles. Aubrey Sprawls, former Western Division manager, said the traffic cone experiment was being held to emphasize driving safety, and would be put into use through the Western Division if successful. The Cleveland employees have been divided into teams with safety points awarded to the accident free teams. Sprawls said a cone would be placed in each vehicle, and that the driver is responsible for placing the cone in the street at the rear of his vehicle at work stops during the day. "This is not only to warn others, but to warn the driver as well whenever backing out of, or pulling out of, a parking space."



## Get Conservation Tips

# Annuitants Attend Energy Seminar

A series of energy conservation seminars was conducted recently for company retirees by Beaumont division Consumer Services personnel.

Some 15 GSU annuitants attended the first meeting at the Beaumont service center on August 15. Sam Badger, Beaumont supervisor of Consumer Services, opened the session by explaining the need for energy conservation and the unique marketing approach Gulf States has adopted since the energy crisis. "We don't market anything at GSU anymore," said Badger, "except conservation."

Badger also explained the conservation programs GSU has launched in an effort to increase public awareness of the need for energy conservation.

The company's recent affiliation with the National Energy Watch (N.E.W.) Program was a focal point of the seminars. N.E.W. is a national program of inspecting new and existing homes and certifying them as energy efficient. Badger said that nine homes in the Beaumont division had been inspected and one had been certified. "This is not a cosmetic program," Badger added.

Other GSU consumer programs also discussed included Project Conserve and the "Energy Hot Line". The "Energy Hot Line" is a new information service which enables customers to get quick answers to their energy-related questions. "Hot Line" phones are currently located in six Beaumont division district offices.

In addition to the consumer information presented at the meeting, Frank LeMire, Beaumont supervisor of credit and collections, talked about the company's budget billing payment plan.

Next Sue Kendall, consumer services representative, presented a slide show on N.E.W. certification standards. Consumer service representative Carol Lamb concluded the seminar with demonstrations of various low cost changes that can be made to a home to make it more energy efficient.



Retired GSU accountant Pete Simon (center) raises a question during the Beaumont Division Annuitant Energy Seminar held recently at the Beaumont Service Center.

## THRIFT PLAN

Investments made by the Trustee during July, 1978 covering employee deductions and Company contributions through June, 1978 were as follows:

### Purchase of Common Stock:

Number of Shares	Total Cost	Average Cost Per Share
26,551	\$384,844.16	\$12.875

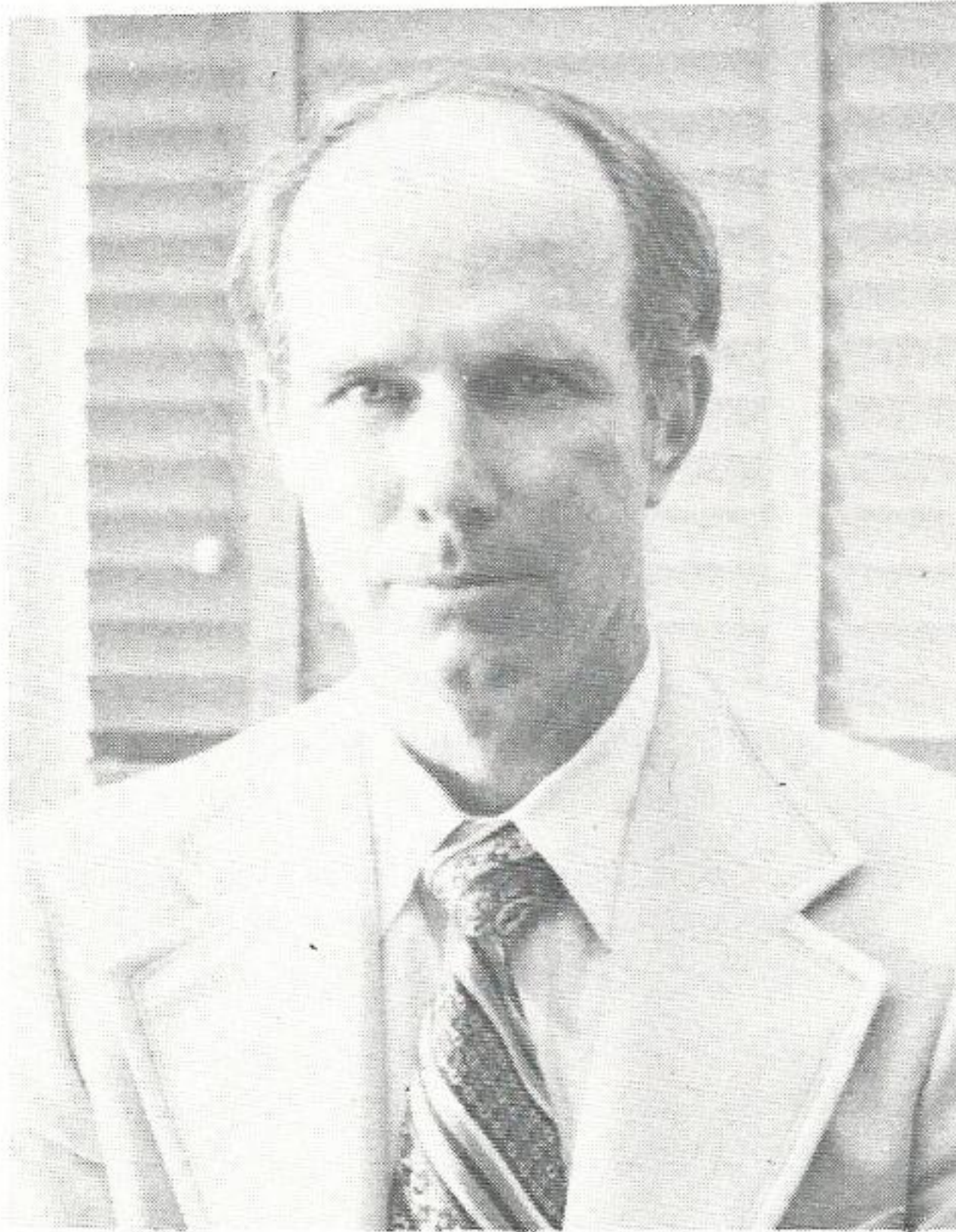
The Trustee also made the following deposits:

First Security Bank of Beaumont, \$124,476.63 — Savings

The Equitable Life Assurance Society, \$23,790.30 — Guaranteed Fixed Income Fund



# Hodges Elected Varibus VP



Edwards G. Hodges

Edwards G. Hodges has been elected vice president of Varibus Corporation, GSU's wholly owned subsidiary. He will also serve as general manager of operations.

The appointment was effective August 1.

Hodges, a native of Fairland, Tex., had previously been manager of operations for Varibus. He had been in that post since 1975.

A graduate of Texas A&M with a bachelor's degree in electrical engineering, Hodges joined Gulf States in 1949 as an industrial engineer, and two years later he was called into the Army. He served in Korea and rose to the rank of captain in the Army Artillery.

Hodges was reinstated in 1953 and in 1955 he was transferred to Navasota, Tex. In 1959, he was transferred to Lake

Charles and promoted to supervisor of industrial sales. He advanced to division sales superintendent in 1963 and to division manager in 1969.

He was transferred back to Beaumont in 1971 and promoted to manager of information and data services.

Hodges has completed the University of Michigan's Public Utility Executive Program (1963) and Harvard's Advanced Management Program (1970).

He and his wife, the former Joe Ann Kent of Baton Rouge, have two children, Colleen and Lisa.

Hodges has been active in a number of organizations, including the Kiwanis Club, United Appeals and Chamber of Commerce. He is a past president of the Louisiana Industrial Development Executives Association.

# Weigand Named Technical Assistant

A 20-year Navy veteran with a Ph.D. in physical oceanography has been named technical assistant to the chairman of the board.

James Gary Weigand, a native of Sheridan, Wyo., assumed the new post on July 16. As technical assistant to chairman Crawford, he will be largely responsible for the company's research programs.

A 1958 graduate of the U.S. Naval Academy with a bachelor of science degree in marine engineering, Weigand served as an officer on various nuclear-powered submarines from 1966 to 1976. From 1973 to 1976, he was commanding officer of the *U.S.S. Nathanael Greene*, a nuclear submarine.

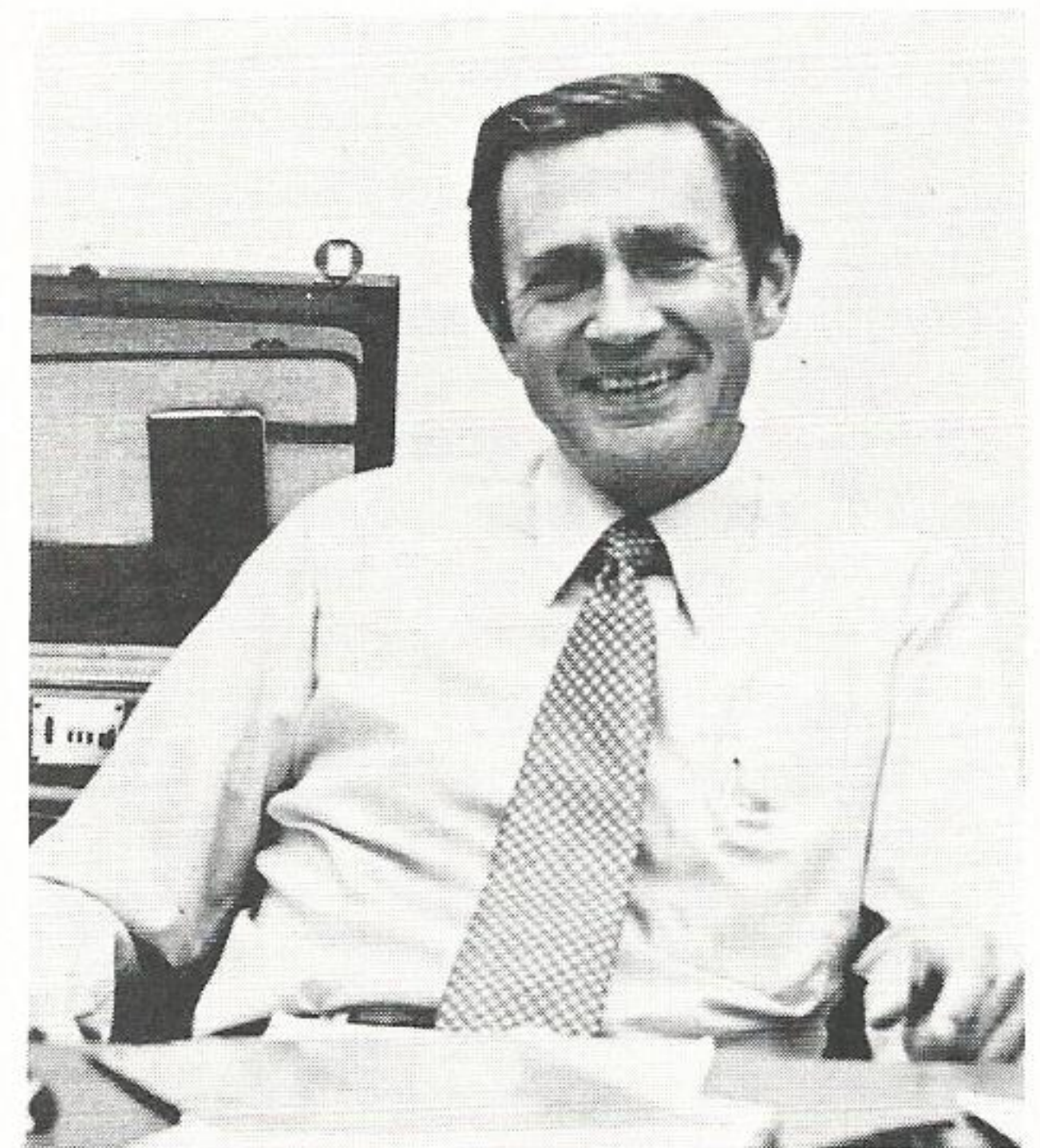
In 1976, Weigand became the nuclear

power coordinator for the chief of naval education and training with the basic responsibility for the training of personnel involved in the Navy's nuclear power program.

Weigand earned his master's degree in physical oceanography from the University of Washington in 1962. Two years later, he received his Ph.D. from the same institution.

He has also completed a 12-month course in nuclear engineering at Mare Island, Calif. and KAPL Laboratories in New York and a 3½-month course in advanced nuclear engineering for submarine commanding officers.

Weigand and his wife, Dee Dee, have three daughters, Janet, Gretchen and Caroline.



James Gary Weigand



# GSU College Aid

**Each year, colleges throughout the country receive thousands of dollars in financial aid because of matching gift programs like the one at Gulf States**

Last year, 48 educational institutions throughout the United States received nearly \$17,000 in gifts as a direct result of the Gulf States College Aid Program. And the figure is expected to be even larger this year.

Eligible institutions in the GSU service area include Lamar University, Beaumont; Sam Houston State University, Huntsville; McNeese State University, Lake Charles; University of Southwestern Louisiana, Lafayette; Southern University and Louisiana State University, Baton Rouge; and Texas A&M University, College Station. In 1977, these institutions, through their various funds, received \$4,555 in matching gift donations from Gulf States.

Under the 17-year-old program, GSU matches the contribution of any employee or director to any eligible educational institution, up to a maximum of \$1,000 per fund. At present, the company's total contribution limit is \$20,000. "We've never reached the limit, but we're getting closer," said GSU Assistant Secretary Patricia Broussard.

In 1977, Gulf States matched \$16,977.75 in employee and director contributions compared to only \$6,146 in 1974. Apparently more and more employees are contributing to the educational institutions of their choice.

According to the terms of the program, an eligible institution is "a school, college or university which is listed as an Accredited Higher Institution in the current issue of *Government Official Booklet of Accredited Higher Institutions* published by the U.S. Department of Health, Education and Welfare, or has been specifically designated by the (GSU) Committee on College Aid Program as an eligible institution . . ."

The provisions of the program also

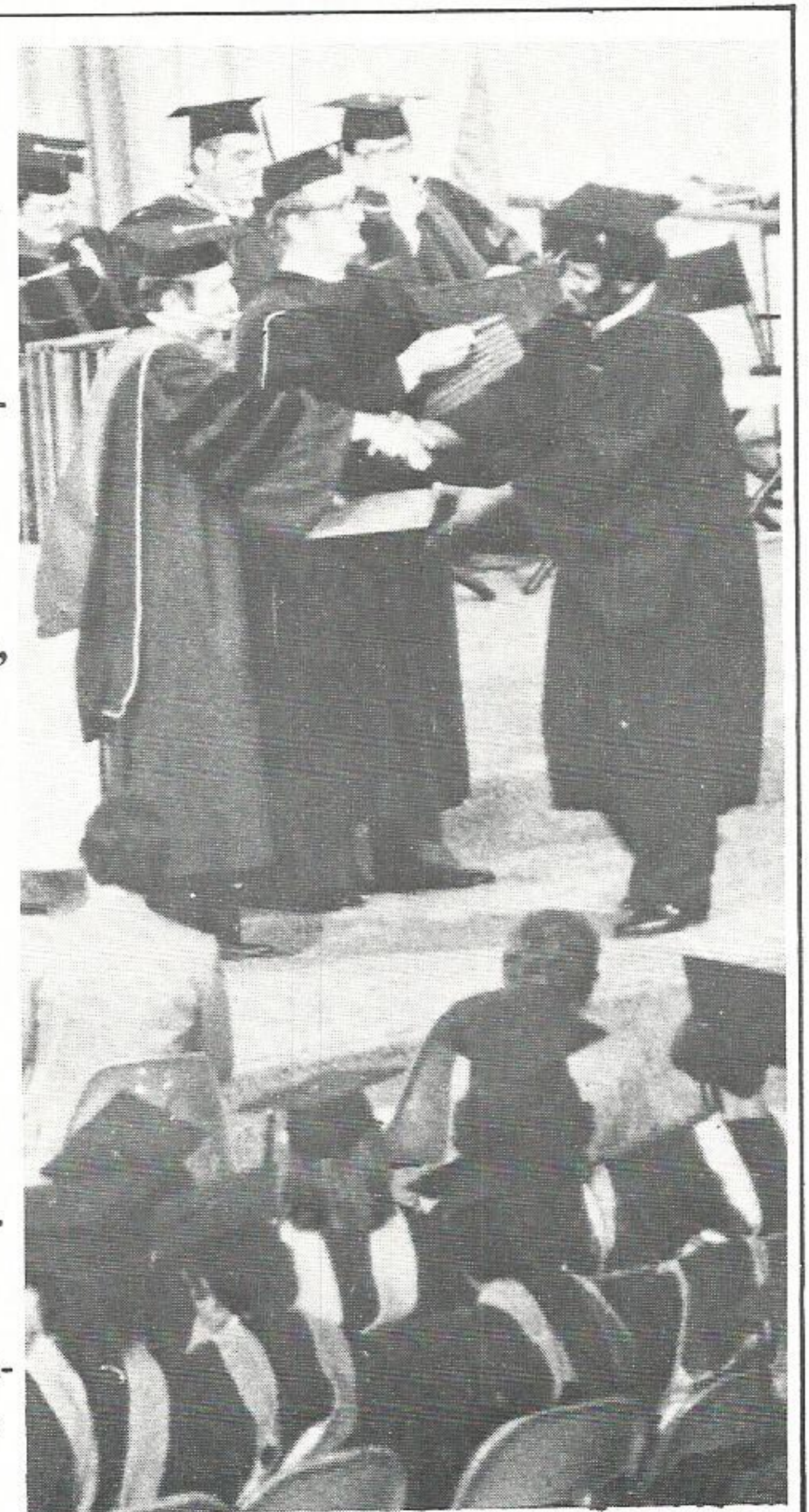
state that alumni funds, foundations or associations are eligible to receive the matching gifts if they are "an integral part of the eligible institution and will transmit to it directly for use for the direct benefit of such eligible institution, all contributions received by it . . ."

In addition, the institution must be recognized by the Internal Revenue Service as an organization to which contributions are deductible by donors for Federal income tax purposes.

Since the program is based on a limit of \$1,000 per fund from a single donor, rather than an institution limit, an institution could get thousands of dollars in matching fund contributions from the company. The amount of matching gift contributions an institution could conceivably receive is limited only by the company's total contribution limit. However, the company will only match a total of \$1,000 per year on account of contributions made by any one person.

**Student life for more than 12,000 career-minded young people, and some not so young, is strengthened and sharpened at Lamar University by 22 programs. They range from varsity sports in the nation's top classification, to opera and drama, to the Big Red Marching Band and student government. These programs need a boost from former Lamar students, through the College Aid Program described on this page. This is especially true for the 1978-79 program year, when, for a combination of reasons, a one-time-only deficit will amount to about \$104,000.**

**Support for Lamar from former students and friends at GSU, matched dollar-for-dollar by the company's matching gift program up to \$1,000 per person, will help keep the following student activities going full speed ahead: Student Government, University Press, Cardinal Magazine, Photo I.D., Post Office, Weekend Activities, Varsity Sports (Men & Women), Radio Station KVLU, Forensics, Men's Intramurals and Recreation, Marching Band, Cardinal Singers, Cheerleaders, Choir, Drama, Dance Company, Fine Arts Scholarships, Jazz Band, Opera, Orchestra and Pulse Magazine.**





If the total contributions made by all eligible persons in a single year exceed \$20,000, then the company's matching contribution is reduced pro rata. By the same token, if the \$20,000 mark is not reached, then Gulf States will match the gifts of retirees on a pro rata basis.

In order to get a gift of cash or stocks matched by GSU, an eligible person needs only to fill out the top half of the application form and send it with his contribution to the eligible institution, fund, foundation or association. The bottom half, which verifies the contribution, is com-

pleted by the institution and mailed back to the company.

Since all of GSU's matching contributions are matched at the end of the year, the forms must be returned to the company before December 1 for the contribution to be matched by the company in the current year. If a form is late getting back, the check will be sent the following December and the gift is part of the next year's total. However, the employee can still claim the contribution as a deduction on his present year's income tax return if the contribution is made before December 31.

According to Broussard, a great many institutions request lists of their alumni employed by the company, lists which the company is unable to compile. "Our personnel records are just not kept that way," she says.

To be eligible for matching, a contribution must have a value of not less than \$10.

Matching gift application forms are available from Linda Wood, Financial Services Department, Beaumont, ext. 771.

## Three Gulf Staters Retire



Julius Terrell



Booker T. Washington



James Stafford

**Julius L. Terrell**, senior engineering assistant in Dayton, has retired with 41 years of service.

Terrell was employed in 1937 in Port Arthur as a helper in the Line Department. With the outbreak of WWII he joined the U.S. Coast Guard and saw duty in the Pacific.

He is married to the former Vivian McGee of Nederland. He is a life member of the VFW, is a Mason and a Shriner.

**Booker T. Washington**, laborer in the Gas Department in Baton Rouge, has retired after 16 years of service.

Washington, a native of Baton Rouge, was employed in 1961.

Washington is the father of five children, Booker T. Jr., Janice, Mona Rae, James Tyrone and Angelia.

**James C. Stafford**, substation mechanic in Baton Rouge, has retired following 28 years of service.

Stafford was employed in 1950 as a helper. The veteran of the U.S. Army is the father of two daughters, Mrs. Claudia A. Behrens and Stacie Stafford.

The St. Amant, La., native is a trade school graduate with studies in sheet metal, radio & television and mechanical. He is a member of the American Legion and Woodmen of the World.

## Executive Changes

(from page 8)

Alumni Association and the Port Arthur Founders Lions Club.

McCurtain became Beaumont division manager in October, 1971, after serving for four months as assistant manager of Beaumont division operations.

A native of Poteau, Okla., McCurtain holds a bachelor of business administration degree in accounting from the University of Texas.

McCurtain was hired in 1952 as an accounting clerk in System Accounting. Later that year, he left the company to serve a two-year stint in the Air Force.

Reinstated in 1954, McCurtain was

quickly advanced to administrative assistant in the Tax Department. He returned to the Accounting Department in 1966 as director of accounting operations. He was elected assistant treasurer in 1969.

Active in the community's civic and religious affairs, McCurtain is treasurer of the YMCA and holds the same post with the First Baptist Church of Beaumont. He has been active in a number of United Appeals campaigns and is chairman of the Commerce and Industry Group for this year's campaign.

He and his wife, the former Edna Earl Whitton of San Augustine, Tex., have three sons.



# Deaths



**Wisner Boudreaux**



**Jimmie Kimble**



**Charley Rawls**



**Adam Speeg**



**Thomas Clayton**



**Mary Dewey**



**L. F. Donaldson**



**Louis Patterson**



**Gilbert Batiste**



**John Siddall**

Three active and seven retired employees of the company have died since the last notices were published in PLAIN TALKS.

**Wisner Boudreaux, Jr.**, control operations foreman at Sabine Station; **Jimmie Kimble**, labor foreman at Louisiana Station, and **Charley Rawls**, garage mechanic in Beaumont were the active employees lost.

Missing now among the retired are **Adam Speeg, Jr.**, Baton Rouge; **Thomas E. Clayton**, Paulding, Miss.; **Mrs. Mary Dewey**, Beaumont; **L. F. Donaldson**, Baton Rouge; **Louis Patterson, Jr.**, Brenham, Tex.; **Gilbert Batiste**, Beaumont, and **John C. Siddall**, College Station, Tex.

Boudreaux had been control operations foreman since 1971. He was a native of Rayne, and a veteran of the U. S. Navy.

He is survived by his wife, Joyce Pharr of Rayne, and four children, Karen, Greg, Rachel and Jeff.

Kimble, who died July 5, had been plant labor foreman since 1975. He was a

native of Lisbon, La., and was educated in Homer.

He is survived by his wife, Evonne Kykes of Homer, and 11 children.

Rawls was employed in 1948 in Beaumont as a car washer. He was promoted in 1961 to special laborer, and to garage mechanic helper in 1974.

The Belcher, La., native was a veteran of the U.S. Army.

Speeg, retired less than a year, was a station supervisor at Louisiana Station. He was employed in 1938 as a fuel operator and spent his career at the north Baton Rouge plant.

He was a native of Baton Rouge, and is survived by his mother, Katie P. Speeg; a daughter, Fay Bordelon; a son, Robert G. Speeg, a sister, Violet S. Rollings, and two brothers, John and Wilfred.

Clayton, who retired in 1967 from the T&D Department in Baton Rouge, was a native of Heidelberg, Miss. He was a military veteran with service during WWII.

Clayton was married to the former

Dorothy Jackson, Lafayette, and the couple had one daughter, Mrs. Paul Ream of Los Angeles.

Mrs. Dewey, retired senior billing clerk in Beaumont, first joined the company as part time help in 1927. In six weeks she became a permanent employee.

A native of Buna, Tex., she was promoted to senior billing clerk in 1952. She is survived by her husband, Fred.

Donaldson, retired since 1974 from Baton Rouge T&D, was native of Gross Tete. He joined the company in 1930 as an apprentice lineman. He was promoted to service supervisor in 1955 after numerous assignments in the Line, Meter and Service departments.

Upon his retirement Donaldson said he would devote the rest of his life to gardening, hunting, fishing and travel.

Patterson, retired since 1964, joined the company in 1939 as a laborer in Navasota. A native of Whitehall, Tex., Patterson worked in the Water Department in Navasota before that aspect of the

(Continued on next page)



# People on the Move

Two promotions have been announced by the System Customer Services Department involving **Jo Ann Smith** and **Michael Bibby**.

Smith, supervisor-Consumer Information Service, Division Marketing, Beaumont, has been transferred to System Customer Services and promoted to director-Program Development. In a related move, Bibby, consumer relations supervisor, Division Marketing, Port Arthur, has also been transferred to System Customer Services and promoted to director-Program Development.

A native of Beaumont, Smith started her GSU career in 1965 as a home service advisor in the Beaumont division. She had been division supervisor of Consumer Information Services since June, 1977.

Married to Joe Lee Smith, she holds a bachelor of science degree in home economics.

She is active in the Beaumont Chamber of Commerce, United Appeals, the Press Club of Southeast Texas and the American Home Economics Association.

Bibby, a veteran of four years in the Air Force, was born in Jackson, Miss., and raised in Little Rock, Ark. He joined the company as a T&D engineer in Beaumont

in June of 1970 after receiving his bachelor's degree in electrical engineering from the University of Arkansas.

He had been in his previous position in Port Arthur since July, 1976.

Married to the former Bette Davis of Texarkana, Ark., Bibby and his wife are the parents of two children, Chris (7) and Angela (3).

A director of the North Port Arthur Rotary Club, Bibby is also active in the Sabine area Home Builders Association and numerous activities at the Methodist Temple in Port Arthur.

Several promotions have been announced by Lafayette District superintendent J. W. Lamm.

**Robert G. Domingue**, line foreman, Lafayette, has been promoted to service foreman, **Shelton J. Trahan**, relayman 1st class, Lafayette, has been promoted to relay foreman and **Ralph J. Broussard**, serviceman 1st class, Lafayette, has been promoted to utility foreman, Line Department.

Domingue is a 27-year veteran of the Lafayette T&D Department, having joined the company in 1951 as a helper. The army veteran had been a line foreman since 1967.

He is married to the former Thelma Broussard of Lafayette, and the couple has five children, Susan (Mrs. Jim Fontinot), Michael, Glenn, Annette and Laurie.

A member of the Lafayette Regional Planning Commission and the Knights of Columbus, Domingue is the National Campers and Hikers Association's conservation chairman for Louisiana.

A native of Carencro, La., Broussard also started his GSU career in 1951 as a helper in Lafayette T&D. He and his wife,

the former Hazel Bowers, of Scott, La., have two daughters, Mrs. Linda Patin and Mrs. Cindy Voiten, and a son Kenneth.

A veteran of more than three years' military service, Broussard attends St. Elizabeth Catholic Church.

Trahan was hired as a meterman in Port Arthur in 1953 after completing a two-year tour of Army duty. He was transferred to Lafayette in 1958 as a substation mechanic. In 1967, Trahan became a relayman.

The Kaplan native is married to the former Levan Guidry, also of Kaplan. The couple has a daughter Sharon, and two sons, Keith and Kevin.

Trahan attended night classes at Lamar for three years.

Willow Glen Station superintendent John Graves has announced three personnel changes involving **James A. Fugitt**, **Garry D. Laxton**, and **John H. Dencausse**.

Fugitt, electrical maintenance foreman, Nelson Station, has been transferred to Willow Glen Station and promoted to test and electrical supervisor; Laxton, engineer, Louisiana Station, has been transferred to Willow Glen Station and promoted to planning engineer; and Dencausse, equipment operator, Willow Glen, has been promoted to control operations foreman.

A 21-year veteran of GSU, Fugitt was hired in 1957 as a helper in the Lake Charles T&D Substation Department. He progressed through a number of T&D assignments until 1970 when he was transferred to Nelson Station and promoted to electrical maintenance foreman.

A native of Ashland, Ky., and an Army veteran, Fugitt graduated from Ashland Senior High School and attended

## Deaths

business was sold to the city. He transferred to the T&D department where he spent the rest of his career.

Batiste, special laborer in the Production department in Beaumont, retired in 1972 after 27 years of service.

A native of Lafayette, Batiste and his wife, Edna, reared seven children, Gilbert, Gable, Jerry, Sandra, Zephanian, Victoria and Jimmy.

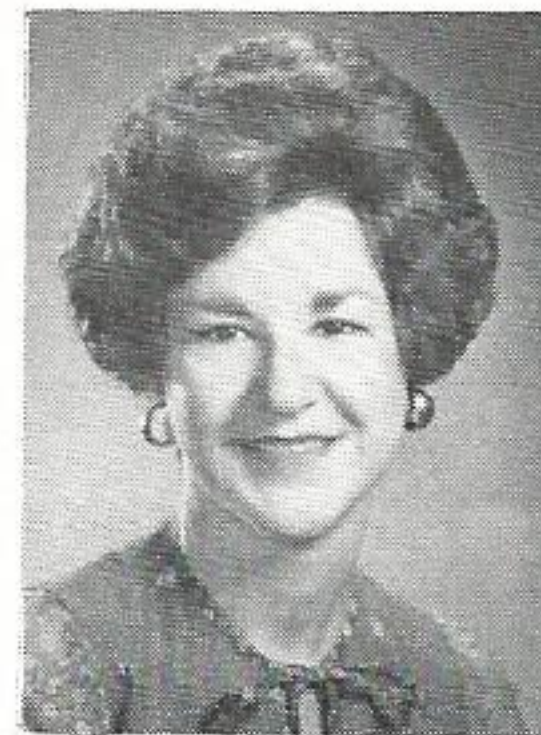
Siddall, retired Mid-County District superintendent, passed away July 6. He had spent 38 years with the company upon his retirement in 1974.

A native of Anderson, Tex., Siddall is survived by his wife, Opal McGilberry of Bedias, Tex.

He was employed in 1936 as a helper in the Beaumont Line department. He transferred to the Port Arthur Division in 1937 and remained there for the rest of his career. He was promoted to district superintendent in 1966.



Bibby



Smith



Domingue



Trahan



Huntington East Trade School and Marshall College. He is married to the former Billie Dew of Zwolle, La. They have three children, Larry, Chris and Terril.

As planning engineer at Willow Glen, Laxton, a native of Pasadena, Tex., will be responsible for preventive maintenance and maintenance planning at the facility.

Laxton was graduated from Texas A&M in 1976 with a bachelor's degree in mechanical engineering. He joined the company in January of 1977 as a plant engineer.

Laxton is a member of the American Society of Mechanical Engineers, the Baton Rouge Rifle and Pistol Club and the National Rifle Association.

Dencausse, a 1967 graduate of Walker High School, was hired by the company in 1972. A native of Hobart, La., he is married to the former Patricia Fagot Dake of Baton Rouge. They have five children, Mark, Deborah, Darla, Trudie and Kimberly.

Dencausse served for four years in the U. S. Marine Corps.

**Quentin R. Whitman**, mathematician, EDP Engineering Services Section of the Information and Data Services Department, has been promoted to EDP engineer.

A 1976 graduate of Lamar University with a bachelor's degree in industrial engineering, Whitman joined GSU in February of 1977. He is a native of Port Arthur.

L. L. Humphreys, senior vice president of energy development, has announced the promotion of **Elizabeth J. McAfee**, secretary-executive, to administrative analyst, administrative staff of the Energy Development Department.

McAfee, a native of Port Arthur, has been with the company since 1953 when she was hired as a customer accounting clerk. A 1975 graduate of Lamar University, she is a member of several honorary

organizations including Phi Kappa Phi and Sigma Tau Delta.

**Robert J. Ciminel**, nuclear operations planning supervisor, River Bend Project, Beaumont, has been transferred to Quality Assurance and promoted to operations quality assurance supervisor.

Ciminel is a veteran of seven years' U.S. Navy submarine service and one year with the Air National Guard where he was an intelligence specialist. He joined Gulf States in October of 1977 as operations planning supervisor for River Bend.

The Muroc, Calif., native has completed the Westinghouse nuclear power training program and the Rennselder Polytechnical Institute's reactor operator's training program. Ciminel presently holds a USNRC Senior Reactor Operator's License.

He is married to the former Alice Bourne of Rick Hill, South Carolina. The couple has two children, Maidie and R. Scott.

Ciminel is a member of the American Nuclear Society and the American Society for Industrial Security.

Jim Booker, manager of the Licensing and Environmental Group, has announced two promotions involving **Terry Puckett** and **William J. Reed**.

Puckett, engineer, Licensing and Environmental, Power Plant Engineering and Design, has been promoted to supervisor-Environmental Licensing, and Reed, engineer, Licensing and Environmental, Power Plant Engineering and Design, has been promoted to supervisor-Nuclear Licensing.

Upon graduation from Texas A&M in 1972 with a bachelor's degree in nuclear engineering, Puckett joined the company as an engineer in Beaumont. As supervisor of Environmental Licensing, he will be involved in the acquisition of necessary

federal, state and local permits for existing and future fossil generating plants.

He is married to the former Lori Wylie of Portland, Tex. The couple has a daughter, Amber Michelle.

The Corpus Christi native is a member of the South Texas chapter of the American Nuclear Society. He is registered as a professional engineer in Texas.

A native of Little Rock, Ark., Reed holds both bachelor's and master's degrees in mechanical engineering from the University of Arkansas. He came to work for the company in 1973 as an engineer in System Production after completion of graduate work.

Reed, who is a 1st Lieutenant in the U.S. Army Reserves, was transferred to Baton Rouge in 1974 and served there as a T&D engineer until June, 1975 when he was transferred back to Beaumont and assumed the position of engineer with the Licensing and Environmental Group.

As supervisor of Nuclear Licensing, Reed will be responsible to the manager of the Licensing and Environmental Group for obtaining all federal, state and local permits required to license a nuclear facility. At present, his main duty will involve obtaining an operating license for the River Bend Station.

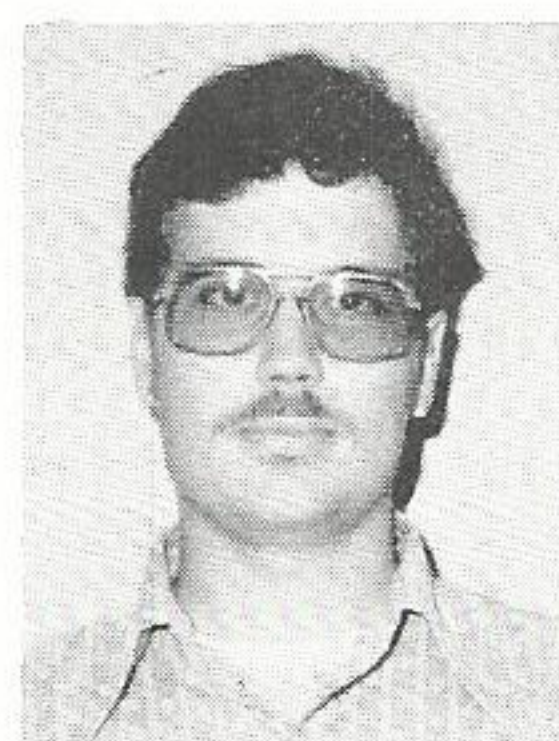
He and his wife, the former Elizabeth Elliott, have a three-year-old daughter, Megan Elizabeth.

Reed is associated with several professional groups, including the South Texas chapter of the American Nuclear Society.

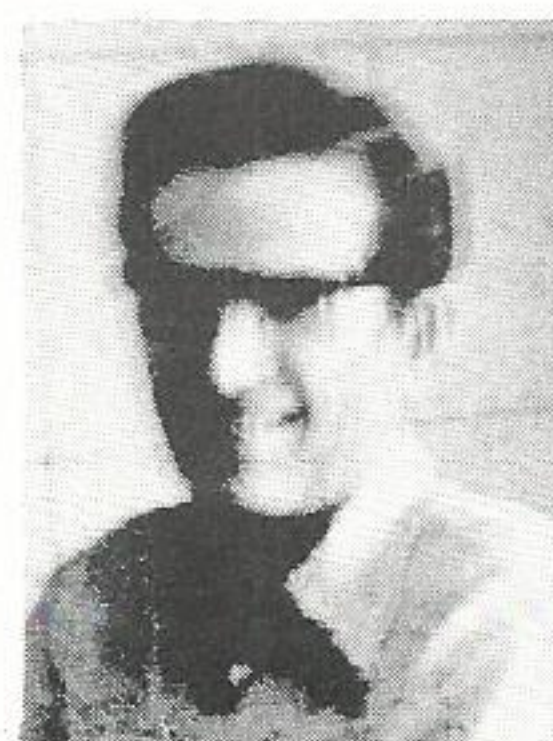
**Candise Mathis**, executive steno-System Operations, Beaumont, has been transferred to Financial Services.

Mathis, a native of Beaumont, was hired in 1967 as a stenographer in System Operations. She has two children, Jeffrey (11) and Tracey (8).

Mathis is active in the American Cancer Society.



Laxton



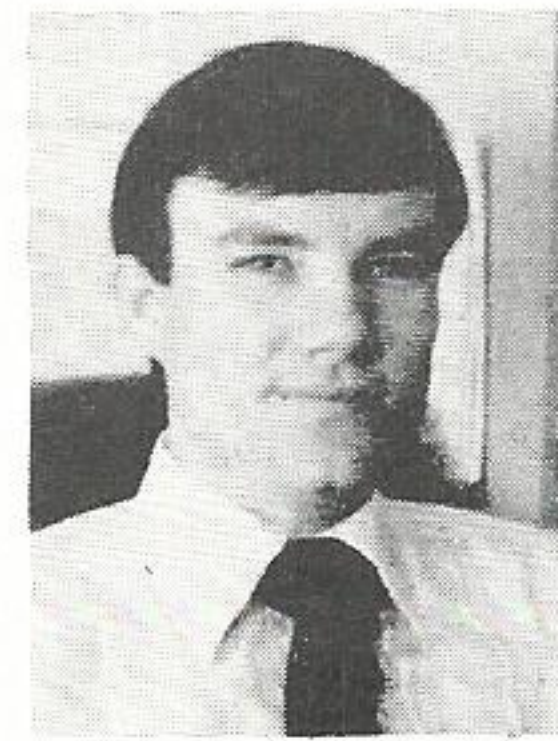
Broussard



Whitman



McAfee



Puckett



Reed



**Robert Whaley**, internal auditor, Internal Audits Department, Beaumont, has been transferred to Nelson Station and promoted to senior project accountant.

An Army veteran, Whaley received his bachelor's degree in accounting in 1972. He was hired as an internal auditor in Beaumont in 1975.

A native of Martinez, Calif., Whaley and his wife, the former Carolyn Burns of Baytown, Tex., have two daughters, Kathryn Ann and Sarah Elizabeth.

**Mary C. Allen**, stenographer-senior, Varibus Corporation Operations, has been promoted to stenographer-executive.

Originally employed in 1971 as stenographer to the operating superintendent of the Beaumont Service Center, Allen was transferred to Varibus in June of 1977. A native of Galveston, Tex., she is married to Mike Allen of Texas City, Tex. The couple has two children, Jennifer Dawn and Jarad Michael.

**Billy G. Creel**, consumer service representative-senior, Division Marketing, Beaumont, has been promoted to energy information coordinator. A consumer service representative in Beaumont since 1966, the Hicksbaugh, Tex., native was hired in 1950 as a meter reader in Silsbee.

An army veteran, Creel and his wife, the former Etta Mae Allen of Silsbee, have two sons, James Allen and Gary Wayne.

As energy information coordinator, Creel is responsible for the energy information displays in the various district offices in the Beaumont Division.

**Renee' B. Lewis**, stenographer-senior, System Operations, Beaumont, has been promoted to stenographer-executive.

Lewis was hired in September of 1971 as a stenographer in Beaumont. A graduate of Durham Business College, she

has been a senior stenographer in System Operations since March, 1974. The Beaumont native also attended Lamar University.

Lewis and her husband, Harry W. Lewis of Beaumont have one child, two-year-old Teri Michel.

She is a member of the Beaumont Police Wives Association.

**Samuel E. Badger**, communications representative, has been promoted to supervisor-Consumer Information Services, Division Marketing, Beaumont.

A former captain in the U.S. Army, Badger is a 1970 graduate of Texas A&M with a bachelor's degree in marketing. He joined the company in 1973 as a residential sales representative in Port Arthur.

Badger, a native of Port Arthur, had been a consumer communications representative in Beaumont since January of 1977.

Badger is married to the former Brenda Joyce Arredondo of Groves, Texas. The couple has two children.

He is active in the Beaumont A&M Club and the GSU Live Wires.

**Gary W. Nicholas**, assistant purchasing agent, Material Services, Beaumont, has been promoted to Purchasing Agent.

A 1962 graduate of Kansas State Teachers College, Nicholas joined the company in October of 1977.

**Howard T. Trammell**, communications foreman, Beaumont T&D, has been transferred to Internal Audits and promoted to coordinator-Meter Security.

Trammell began his career with GSU in 1950 as an operator's helper in Orange. An Air Force veteran, Trammell had been communications foreman at the Beaumont Service Center since 1969.

The Deweyville, Tex., native is married

to the former Violet Carpenter of Orange, and the couple has three children, Mark, Guy and Mary.

Trammell completed Air Force electronics school in 1948.

**Billy R. Compton**, engineer, has been transferred from the T&D Engineering Department, Lake Charles, to Engineering Standards and Applications, Beaumont.

A native of Springfield, Mo., Compton joined the company in 1975 as an engineer in Lake Charles T&D. The Air Force veteran holds a bachelors degree in electrical engineering.

A number of personnel changes have been made in the Baton Rouge Division involving **Van B. Hereford**, **Zalvia B. Jackson**, **Peter C. Seymore** and **George W. Henderson**.

Hereford, coordinator, Consumer Credit, Baton Rouge, has been promoted to Division Accounting supervisor; Jackson, line foreman, Dehnam Springs, has been transferred to Baton Rouge and promoted to service foreman; Seymore, utility foreman, Baton Rouge, has been promoted to line foreman; and Henderson, serviceman 1st class, Denham Springs, has been promoted to utility foreman, T&D Line.

Upon receiving his bachelor's degree from Sam Houston State in 1955, Hereford joined the company as a junior accountant in Beaumont.

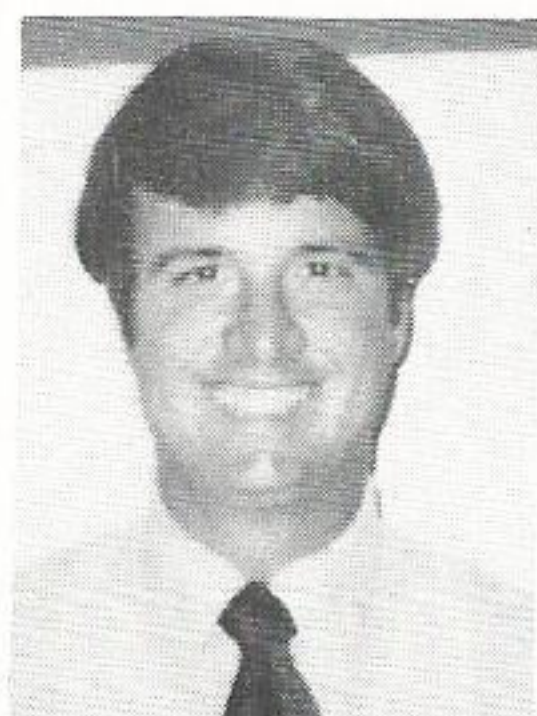
An army veteran, the Conroe native is married to the former Mary Elizabeth Carter of Newton, Tex. They have two children, Debra Kay and Kelly Steven.

Hereford is a member of the Metropolitan Kiwanis and the Baton Rouge Credit Roundtable.

Jackson started his lengthy GSU career in 1949 as a substation helper in Baton Rouge. He had been line foreman in Denham Springs since 1966.



**Mathis**



**Whaley**



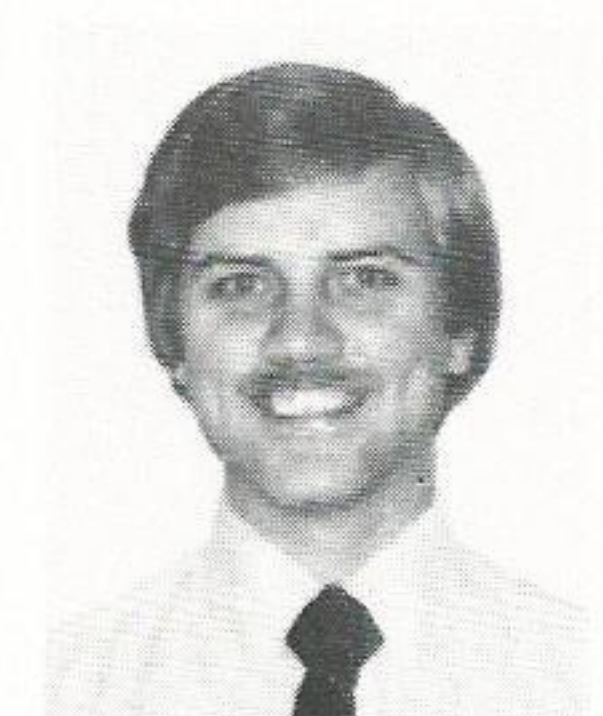
**Allen**



**Creel**



**Lewis**



**Badger**



He and his wife, the former Beverly Fryoux, a native of Baton Rouge, have four children, June, Burt, Doug and Nell.

The Denham Springs native is president of the Kilowatt Klub, past president of the Denham Springs Lions Club and chairman of the Denham Springs Planning and Zoning Commission. An army veteran, Jackson is also a member of the American Legion.

Henderson, a native of Baton Rouge, has been with Gulf States since 1955 when he was hired as a helper in the Baton Rouge T&D Department. He served four years as a gunner in the Air Force.

He is married to the former Janice Harris, of Denham Springs, daughter of retired GSU employee, R. C. Harris. The couple has three children, Virginia Dianne, David mCarl and Stella Denise and a granddaughter, Jennifer Pearson.

Henderson attends Hebron Baptist Church.

A native of Morganza, La., Seymore was hired as a T&D helper in 1954.

Seymore, a veteran of four years' Navy duty, is married to the former Mary Jane Gueho of New Roads, La. The couple has six children, Mrs. Paul (Gloria) Bertrand, Mrs. E. G. (Tammy) Collier, Penny Elaine, Glenny Jane, Tina Marie and Peter C. Seymore, Jr.

**Joseph E. Budd**, senior engineering assistant, System Engineering, has been promoted to real estate representative.

Budd, senior engineering assistant since 1974, was graduated from French High in Beaumont in 1967. He was hired by GSU in 1969 as an engineering helper in Beaumont.

The Beaumont native and his wife, Gail, also of Beaumont, have two daughters, Julie and Jamie.

A six-year Marine Corps veteran with 16 months service in Vietnam, Budd earned a number of military honors, including the Bronze Star, the Vietnamese Gallantry Cross and the Purple Heart. Budd was active in the company's CONTACT employee information program.

A number of personnel changes have been announced in the Internal Audits Department, including **William W. Saari** and **Tracy W. Williams**.

A native of Republic, Mich., Saari, internal auditor, River Bend Station, has been promoted to senior internal auditor and Williams, a Baytown, Tex., native, and an internal auditor in Beaumont, has been transferred to Nelson Station.

Saari, hired in March as an internal auditor, is married to the former Colleen "Lolly" Grant. The couple has three children, William Jr., Angela and Shawn.

Williams, also a relatively new Gulf Stater, joined the company in January as an internal auditor in Beaumont. As internal auditor at Nelson Station in Lake Charles, he will be auditing construction of the Nelson #6 Coal Unit.

Williams received his bachelor's degree in accounting in December, 1977. He is married to the former Dianna Lynn Schmidt.

**Clarence A. Lecoq**, risk analyst, Accounting Services-Risk Management Department, Beaumont, has been promoted to senior risk analyst.

Lecoq is a 1964 graduate of Lamar University with a bachelor's degree in general business. He was hired as a risk analyst in Beaumont in June, 1977.

The father of two sons, Kevin and Corey, Lecoq enjoys a number of outdoor activities, including golf, fishing and hunting.

Two promotions have been announced at Nelson Station involving **Fred D. Doucet** and **John A. Landry**.

Doucet, master electrician, has been promoted to electrical maintenance foreman, and Landry, master repairman, has been promoted to mechanical maintenance foreman.

Doucet, born in Branch, La., served a

three-year tour of Navy duty prior to his employment in 1959 as a mechanics helper at Nelson Station.

He has studied Radio and Television Instrumentation at Sowell Tech in addition to two year's at McNeese State in Electronics Technology.

Doucet and his wife, Claudia, of Lake Charles, have two daughters, Diana Doucet Carrier and Susan Rene'

He is a member of a number of outdoor organizations, including the Westlake Hunting Club, the National Field Archers Association, the Louisiana Wildlife Federation, the Lake Charles Archery Club, the National Rifle Association, the Louisiana Farm Bureau and Big Lake Sportfishermen, Inc.

Landry also started his GSU career as a mechanics helper at Nelson Station. Employed in 1962, Landry became master repairman at Nelson in 1976.

A native of Lake Charles, Landry is married to the former Sondra Katherine Lee, also of Lake Charles. The couple has three children, Ramona, Michael and Mitchell.

The Army veteran is a member of St. Margaret's Catholic Church and the Disabled American Veterans, Chapter #017. Landry served as a discussion leader in the CONTACT employee information program.

**Joel E. Jeffcote**, supervisor-Customer Accounts, Conroe, has been promoted to Division Accounting Supervisor.

A 1974 graduate of Lamar University with a bachelor of business administration degree in accounting, Jeffcote was hired in 1970 as a helper in the Test Department at Sabine Station.

Jeffcote is veteran of four years Air Force duty, including one year in Vietnam.

The Houston native is married to the former Margaret Nichols of Bridge City, Tex., and the couple has two children, Scott Elliot and Sara Jane.



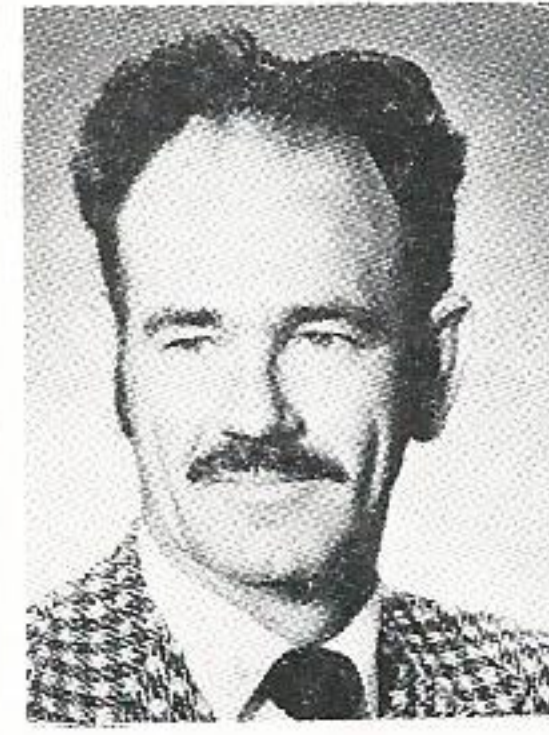
**Trammell**



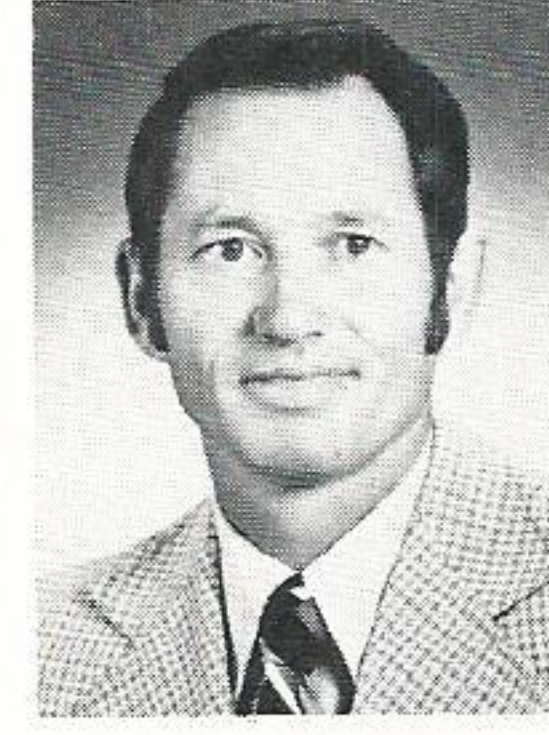
**Hereford**



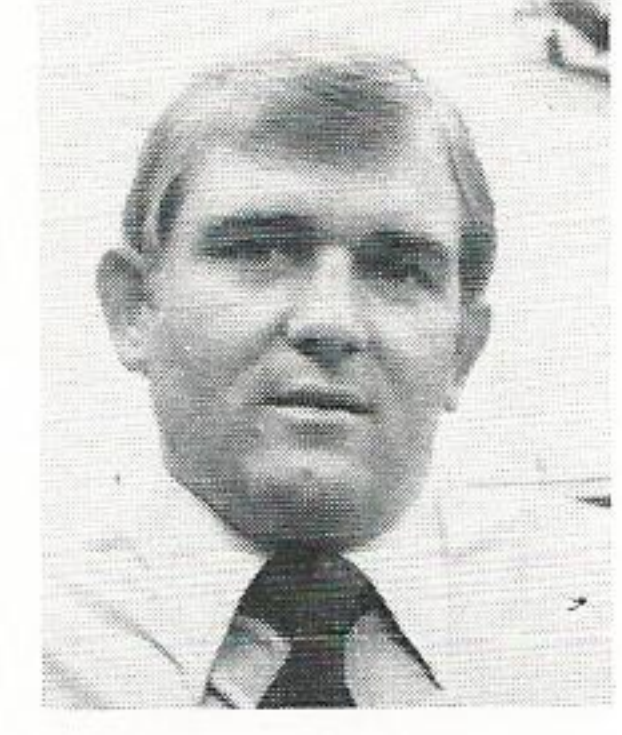
**Jackson**



**Seymore**



**Henderson**



**Budd**



William E. Richard, Lake Charles division manager, has announced the promotion of **Edith C. Patterson**, departmental clerk, to assistant to the general line foreman, T&D Line Department.

Patterson has been a GSU departmental clerk since 1961. The Gorman, Tex., native has a son, John, and a daughter, Marcia P. Finch.

A graduate of Moody High School, Patterson has studied at Mary Hardin Baylor, McNeese State University and Sowell Tech.

**Jack A. Sirman**, supervisor-Survey & Right-of-Way, T&D Engineering, Baton Rouge, has been transferred to Real Estate, System Engineering, Beaumont, and promoted to System Right-of-Way supervisor.

A native of Jasper, Tex., Sirman began his Gulf States career in 1955 as an engineering helper in Beaumont.

He and his wife, the former, Audrey Dale Whitaker, have three children, Debra Ann, Michael Steven and Patricia Dale.

Sirman, a member of the American Right-of-Way Association, attended Lamar Univeristy and LSU.

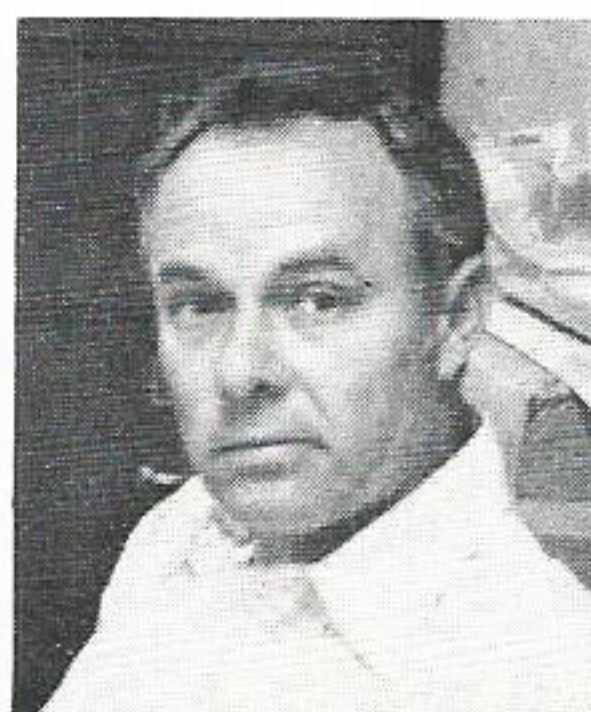
Two Personnel Department staff changes involving **Calvin J. Jaetzold** and **Glenn M. Sealy** have been announced by GSU manager of Industrial Relations J. T. Meinscher.

Jaetzold, labor relations representative, Industrial Relations, Beaumont, has been transferred to Lake Charles, and promoted to division personnel representative and Sealy, coordinator-Employee Benefits, Personnel Services, Beaumont, has been transferred to Conroe, and promoted to division personnel representative.

Jaetzold, a native of Port Arthur, joined GSU in 1963 as a junior residential sales representative. He received his bachelor's degree in organizational



Saari



Doucet

## ALSO

**Larson Jo D**, Bmt., Promoted, Stenographer-Sr-Fin servs/Budget Oper  
**Cormier Carlton R**, Bmt., Promoted, Test Tech 1/C-Neches Sta-Test

**Pierson Alfred W**, Bmt., Promoted, Repairman 1/C-Neches Sta-Mech

**Jordan Delbert E.**, Bmt., Promoted, Oper Helper (Auxil Oper)-Neches Sta-Operns

**Remie Ronald P**, Bmt., Promoted, Lineman 4/C-T&D/Line

**Wilcox William R**, Bmt., Promoted, Truckdriver-T&D/Line

**Jenkins Morris O**, Bmt., Promoted, Truckdriver-T&D/Line

**Antoine Freddie Jr**, Bmt., Promoted, Laborer II-T&D/Labor Crews

**Tolliver George Jr**, Orange, Promoted, Lineman 3/C-T&D/Line

**St. Julien Jason**, Orange, Promoted, Apprentice-T&D/Line

**Sandifer Jean F**, Orange, Promoted, Utility Man-T&D/Line

**Thompson Elmer A**, Pt Arth, Promoted, Mechanic Helper-Sabine Sta-Mech

**Dickerson Russell R**, Pt Arth, Promoted, Mechanic Helper-Sabine Sta-Mech

**Darcey Wayne P**, Pt Arth, Promoted, Mechanic Helper-Sabine Sta-Mech

**Leger Nelson M**, Pt. Arth, Promoted, Serviceman 3/C-T&D/Service

**Girouard Kent D**, Pt Arth, Promoted, Substation Mech 3/C-T&D/Substa

**Pierce Joey N**, Pt Arth, Promoted, Helper-T&D/Labor Crews

**Prince Ronald J**, Pt Arth, Promoted, Helper-T&D/Labor Crews

**Roberts Christopher C**, Pr Arth, Promoted, Helper-T&D/Labor Crews

**Dattalo Pamela L**, Pt Arth, Promoted, Stenographer-Sr-Div Mktg/Overall

**Moe Stanley W**, Conroe, Promoted, Elect 2/C-Lewis Creek-Elect

**Green Donald R**, Conroe, Promoted, Relayman 2/C-T&D/Relay

**Alexander J D**, Conroe, Promoted, Lineman 3/C-T&D/Line

**Hoffart Willie J**, Conroe, Promoted, Lineman 2/C-T&D/Line

**Walker Michael B**, Conroe, Promoted, Lineman 4/C-T&D/Line

**Mitchell Larry D**, Conroe, Promoted, Apprentice-T&D/Line

**Pittman Douglas W**, Conroe, Promoted, Apprentice-T&D/Line

**Morrison Kenneth**, Conroe, Promoted, Apprentice-T&D/Line

**Taylor Fred M**, Conroe, Promoted, Div Substa Oper-T&D/Service

**Stewart Glenn R**, Conroe, Promoted, Engr Helper-T&D/Engrg

**Austell James R**, Nava, Promoted, Lineman 1/C-T&D/Line

**Martin Robert D**, B Rouge, Promoted, Auxiliary Oper-La Sta-Operns

**Franklin Michael R**, B Rouge, Promoted, Auxiliary Oper-La Sta-Operns

**Moore Adrian G Jr**, B Rouge, Promoted, Mechanic Helper-La Sta-Test

**Gourley Reubin D**, B Rouge, Promoted, Mechanic Helper-La Sta-Elect

**Carson Albert J**, B Rouge, Promoted, Mechanic Helper-La Sta-Mech

**Vaughn Jonathan W II**, B Rouge, Promoted, Mechanic Helper-W/Glen-Mech

**Holmes Cindy L**, B Rouge, Promoted, Mechanic Helper-W/Glen-Mech

**Rollins Louis B**, B Rouge, Promoted, Repairman 1/C-W/Glen-Mech

**Landry Larry J**, B Rouge, Promoted, Repairman 1/C-W/Glen-Mech

**Darr Randall L**, B Rouge, Promoted, Repairman 2/C-W/Glen-Mech

**Rivett Ricky S**, B Rouge, Promoted, Repairman 2/C-W/Glen-Mech

**Jarrell Carl E**, B Rouge, Promoted, Pipeman-Gas Dept/Dist-Lab Crws

**McGhee Charley L**, B Rouge, Promoted, Pipeman-Gas Dept/Dist-Lab Crws

**Bordelon Louis E**, B Rouge, Promoted, Meterman 1/C-T&D/Meter

**Butler Harry**, B Rouge, Promoted, Garage Mech Helper-Prov-T&D/Garage

**Mouton Polo P**, B Rouge, Promoted, Lineman 4/C-T&D/Line

**Dreher Michael A**, B Rouge, Promoted, Storeroom Asst-Div Acctg-Stores-Choctaw

**Perkins Thomas L**, B Rouge, Promoted, Storekeeper-Div Acctg-Stores-La Sta

**Perkins Willie J**, Zachary, Promoted, Apprentice-T&D/Line

**Morgan Stephen L**, Pt Allen, Promoted, Lineman 3/C-T&D/Line

**Elter Charles W**, L Chas, Promoted, Test Tech 1/C-Nelson Sta-Test

**Dean Chad D**, L Chas, Promoted, Garage Mech 3/C-T&D/Garage

**Gremillion Grady J**, L Chas, Promoted, Apprentice-T&D/Line

**Blair Ramon**, Jennngs, Promoted, Helper-Prov-T&D/Labor Crews



behavior and management in 1967 from the University of Houston.

He is married to the former Patricia Ann Terry, also of Port Arthur, and the couple has three children, Trent Blair (16), Candace Dawn (15) and Spencer Ross (7).

An honor graduate of the University of Texas, Sealy holds a bachelor's degree in Personnel Management.

Born in Dallas, Sealy grew up in Clute, Tex. He started with the company in 1973 as an administrative accountant in Beaumont. Sealy had been coordinator of employee benefits since September of 1977.

Sealy is married to another Clute native, the former Sharon West. They have a two-year-old son, Jared.

Three promotions have been announced in the Beaumont Division.

**Homer C. Shawver**, utility foreman, has been promoted to line foreman, T&D Line Department, Silsbee; **Drexel E. Ridley**, serviceman 1st class, has been promoted to utility foreman, T&D Line Department, Beaumont; and **Guerry Weathers**, senior engineering assistant, has been promoted to party chief, T&D Engineering Department, Beaumont.

A native of Lumberton and a graduate of Silsbee High, Shawver had been utility foreman in the Silsbee Line Department since July, 1968. He is a two-year veteran of the Army, serving in the 38th AAA Nick Missile Battalion.

He and his wife, the former Johni Elarton of Osyka, Miss., have four children,

Sandra, Charles, Karl and Adrian. Shawver is a member of Loeb Baptist Church and has received two life savings awards, Edison Electric Institute (1953) and the President's Award (1967).

A veteran of 17 years in the GSU Service Department, Ridley began his career with the company in 1946 as a helper in the Beaumont Line Department. Prior to coming to GSU, he served a three-year stint in the Navy.

Born in Axtell, Tex., he and his wife, the former Peggy Looney of Ganado, Ariz., have a son, Van, a daughter, Ranah Becker and two grandchildren, Stephen and Jeffrey.

Weathers, a native of Franklin, La., joined Gulf States in 1962 as an engineering helper in System Engineering. He is married to the former Sandra Brinson of Austin, and the couple has a daughter, Sherri.

A veteran of 10 years with the Air National Guard, Weathers has completed a 96-hour surveying course at Lamar University. He attends the First Baptist Church of Beaumont and is a member of the Downtown YMCA.

**Rufus J. Mier**, supervisor-Consumer Services, Division Marketing, has been transferred from Lake Charles to Port Arthur and promoted to superintendent-Consumer Services.

As superintendent of Consumer Services, Mier is responsible for industrial, commercial and residential load management and information services in the Port Arthur Division.

A native of Lafayette, Mier graduated

from Lafayette High School and attended USL. He was hired by GSU in 1949 as an engineering helper in Lafayette. In 1967, Mier was transferred to Lake Charles as supervisor of Consumer Services.

The Navy veteran is married to the former Dot Matthieu, and the couple has four children, Bryant (27), Debbie (22), Greg (18) and Artie (7). Mier is a past president and an 11-year member of the board of directors of the Homebuilders Association of Southwest Louisiana.

**Wallace J. Aultman**, serviceman 1st class, Gonzales, has been transferred to the T&D Line Department and promoted to utility foreman.

Hired in 1969 as a helper, the Oakdale, La., native had been district serviceman in Gonzales since 1973. He and his wife, the former Hesta Foshee, have two children, Craig and Stephanie.

**Vernon V. Boudreaux**, assistant project engineer, Power Plant Engineering and Design, has been promoted to supervisor-Electrical Engineering.

Boudreaux, a native of Erath, La., is a 1957 graduate of LSU with a bachelor's degree in electrical engineering. That same year he joined GSU as an engineer in Lake Charles T&D. A registered engineer in Louisiana and Texas, Boudreaux had been assistant project engineer for the River Bend project since October.

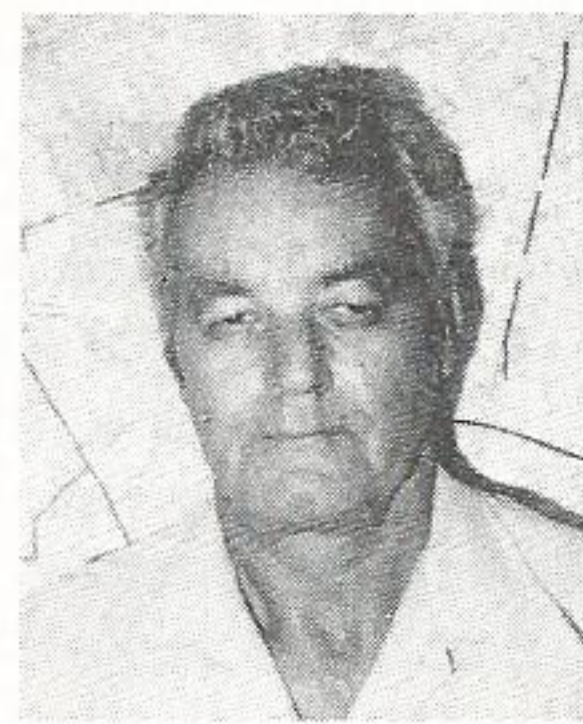
The Air Force veteran is married to the former Dinah Stieb of Ocean Springs, Miss. They have five children, Lark, Claire, Susan, Coulter and Chris.



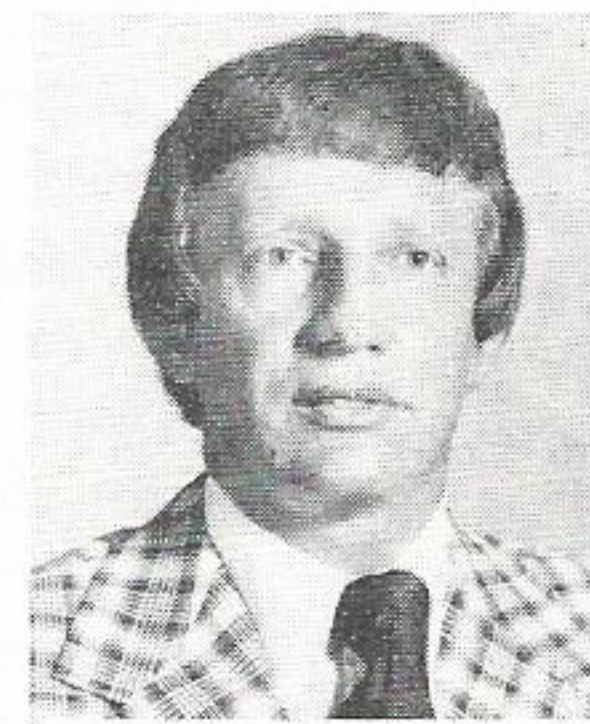
Landry



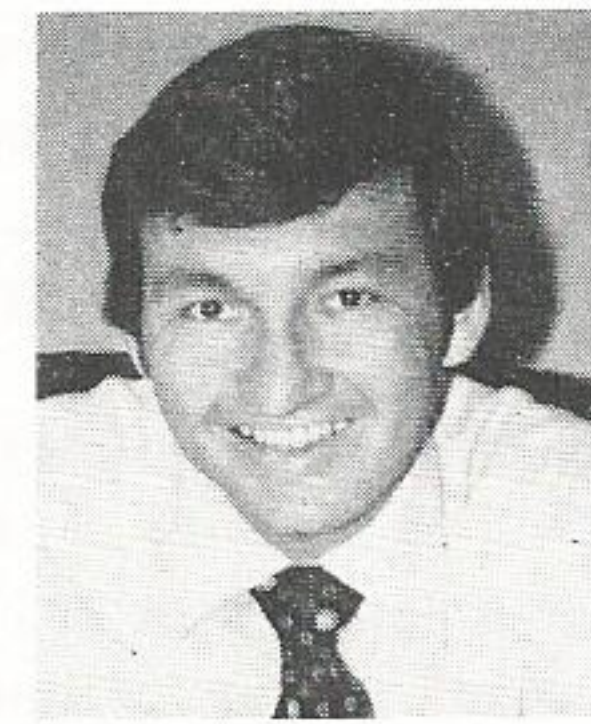
Jeffcote



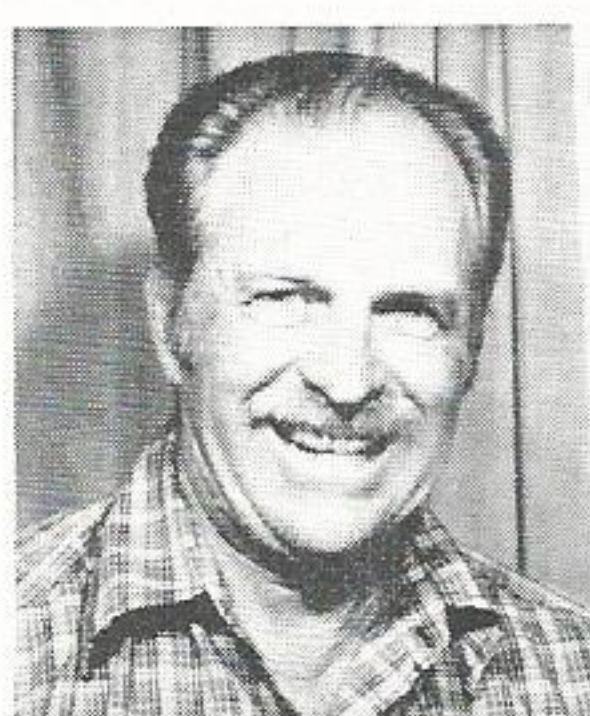
Sirman



Jaetzold



Sealy



Ridley



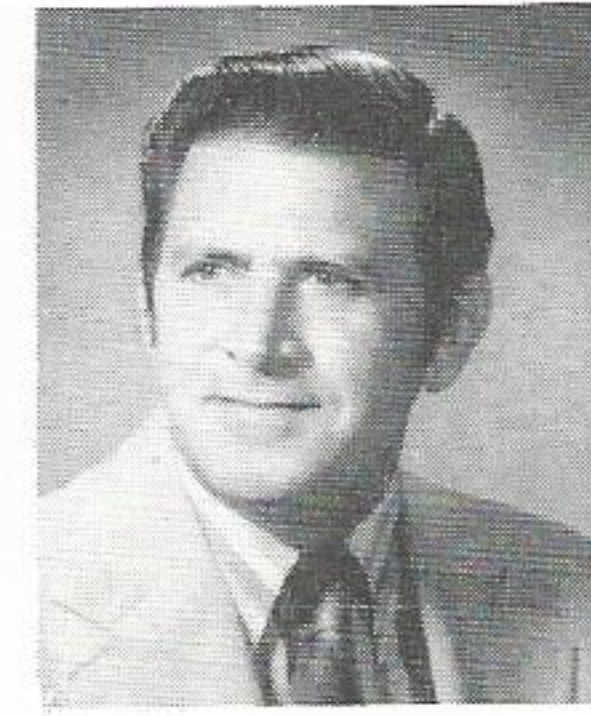
Weathers



Mier



Aultman



Boudreaux



# Service Awards

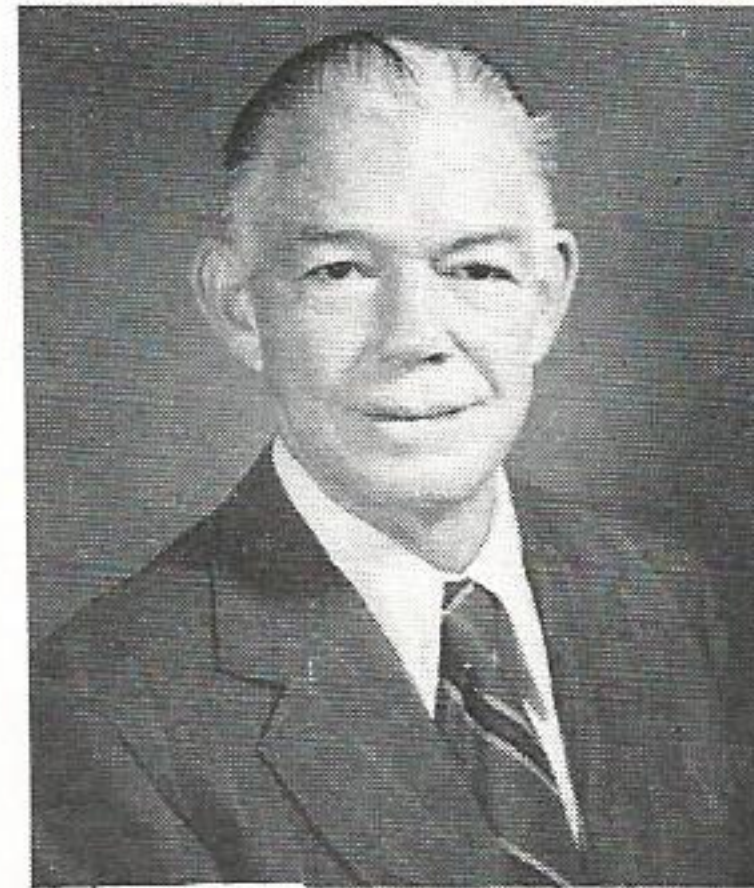
## 40 Years



**Robert L. Wynne, Jr.**  
Financial Serv Dept.  
Beaumont



**W. A. Corkern**  
Electric T&D Dept.  
Baton Rouge



**James L. Braswell**  
Acctg. Services Dept.  
Beaumont

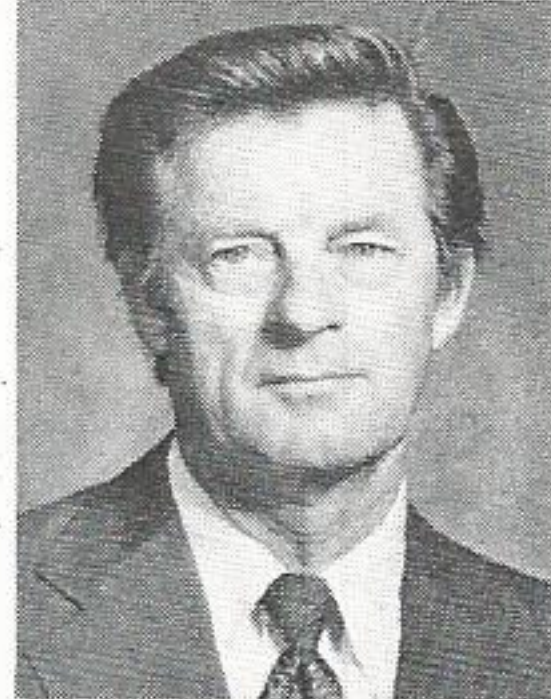


**Leslie B. Kent**  
Division Operations  
Port Allen

## 30 Years



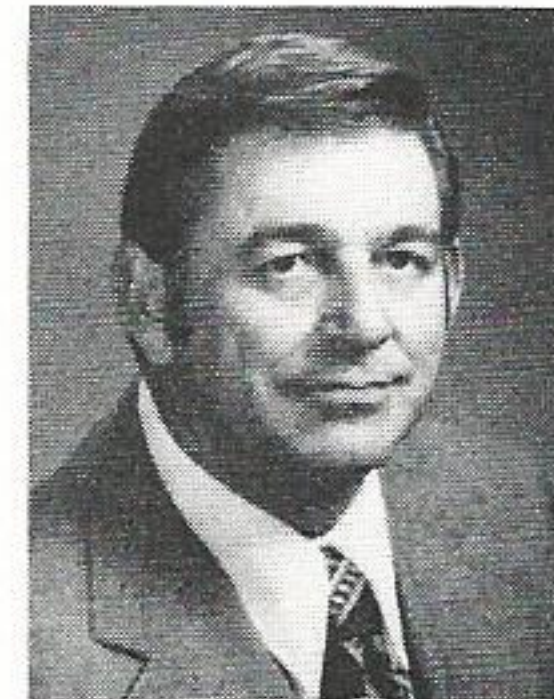
**Helen H. Byrd**  
Acctg. Services Dept.  
Beaumont



**Louis Hormell**  
Electric T&D Dept.  
Jennings



**Rayford L. Bagwell**  
Division Production  
Lake Charles



**Summa L. Stelly**  
Division Operations  
Port Arthur



**Ferris J. Parent**  
Division Production  
Baton Rouge



**Raymond Jones**  
Electric T&D Dept.  
Baton Rouge



**Orin M. Dixon**  
Electric T&D Dept.  
Beaumont



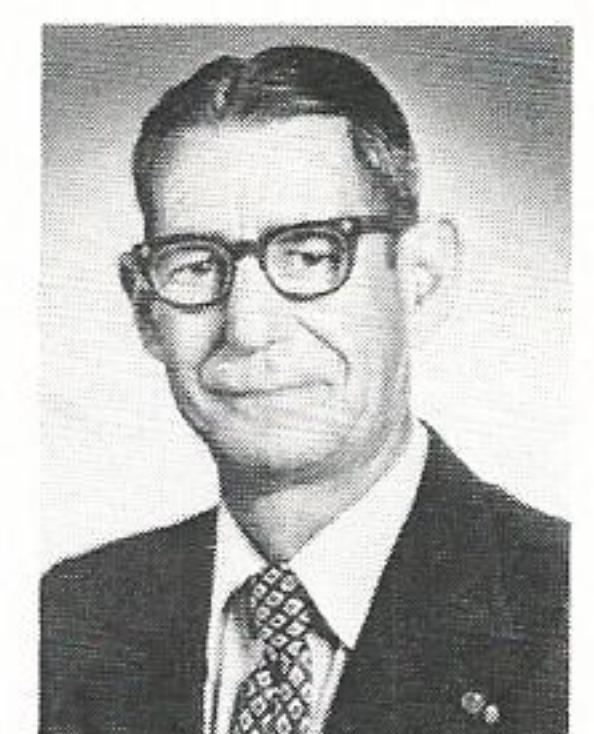
**Leroy P. Boutin**  
Electric T&D Dept.  
Church Point



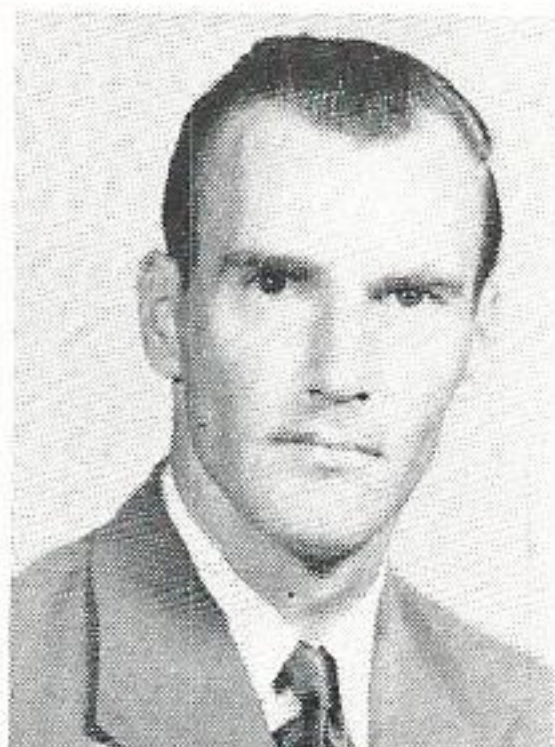
**Anna J. Atkins**  
Sys. Engr. Design  
Beaumont



**Robert Charles**  
Electric T&D Dept.  
Lake Charles



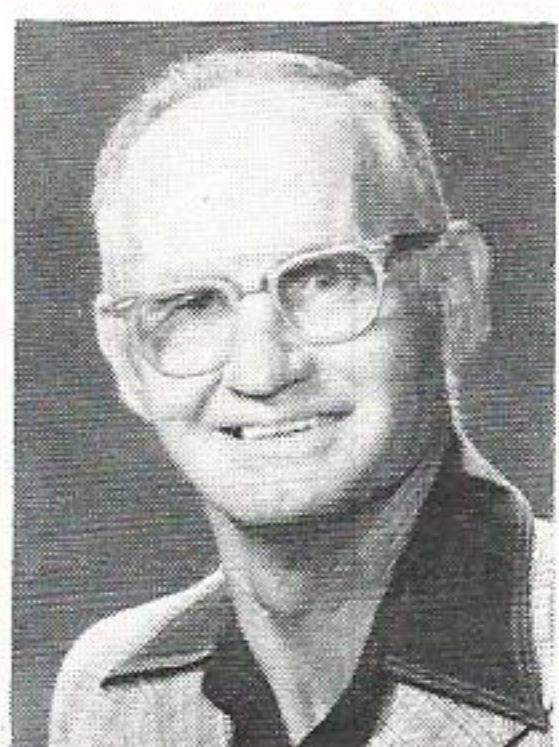
**Lloyd J. Ourso**  
Electric T&D Dept.  
Port Allen



**Edward J. Trouard**  
Division Production  
Lake Charles



**Joseph E. Foreman**  
Electric T&D Dept.  
Lafayette



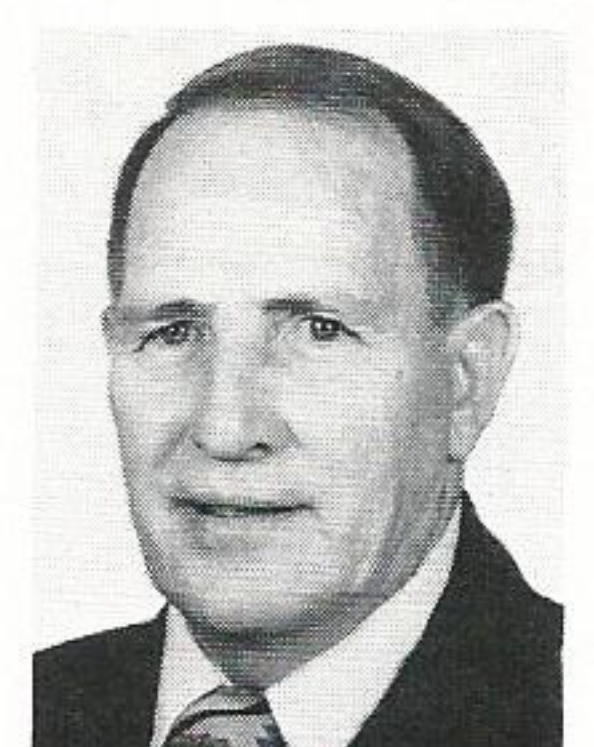
**Melvin L. Shelly**  
Electric T&D Dept.  
Huntsville



**Edd L. Mitchell, Jr.**  
Divn. Marketing Dept.  
Cleveland



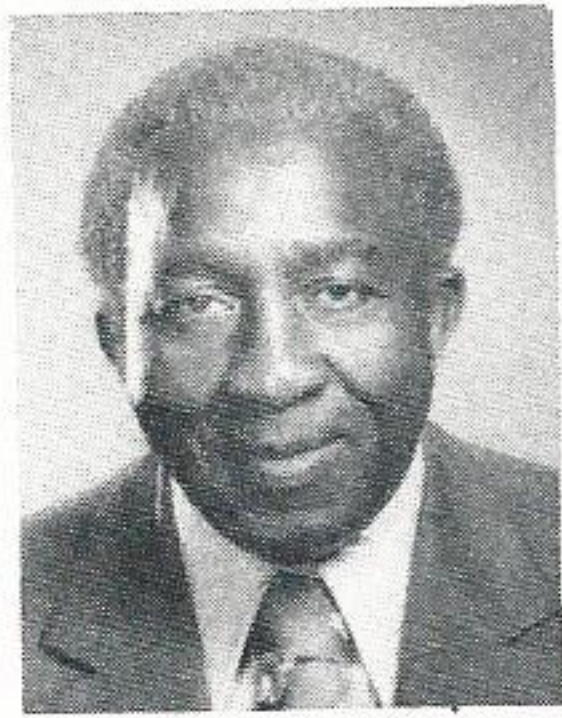
**Albert Richard**  
Electric T&D Dept.  
Port Arthur



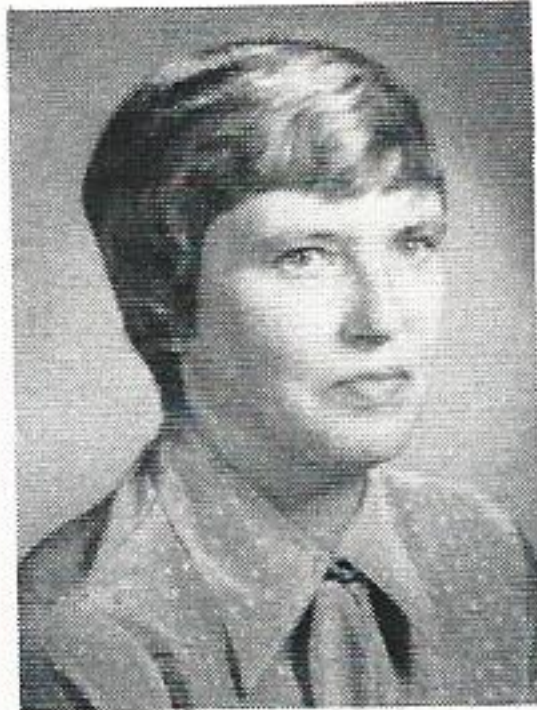
**John M. Wellheuser**  
Electric T&D Dept.  
Lake Charles



# 20 Years



**Bobbie Flanagan**  
Storeroom  
Beaumont



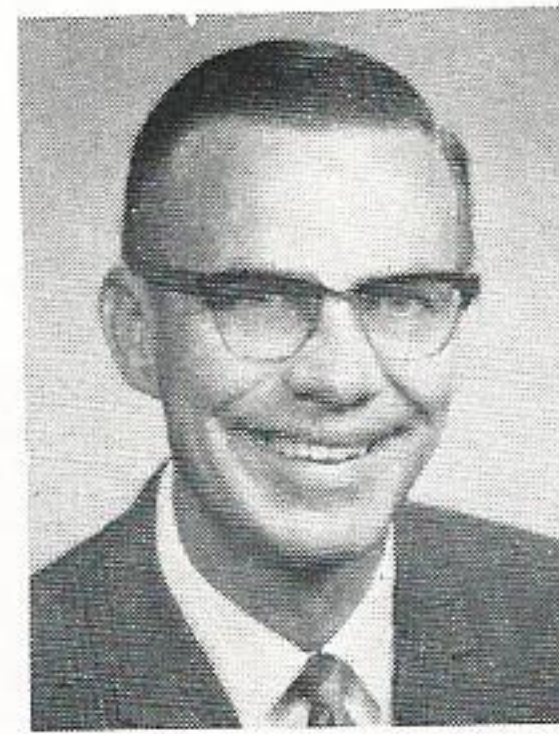
**Nancy A. Nesbitt**  
Material Servs. Dept.  
Beaumont



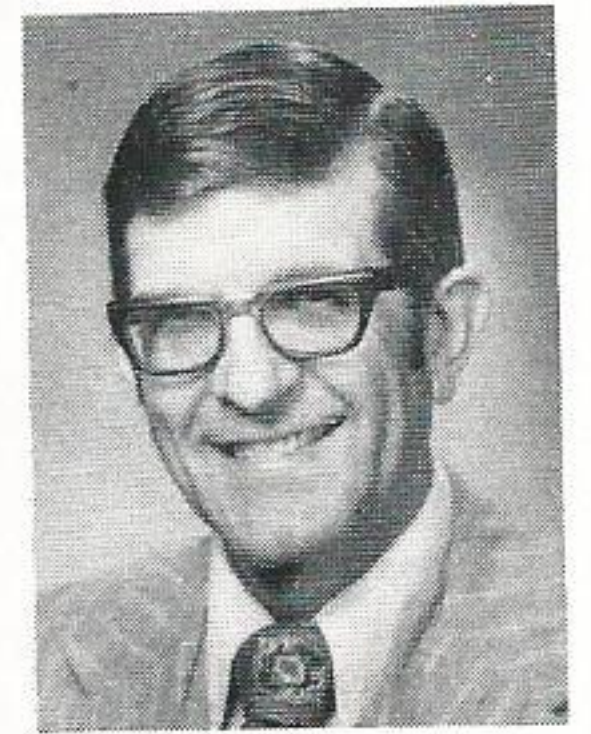
**Percy A. Levine**  
Division Production  
Lake Charles



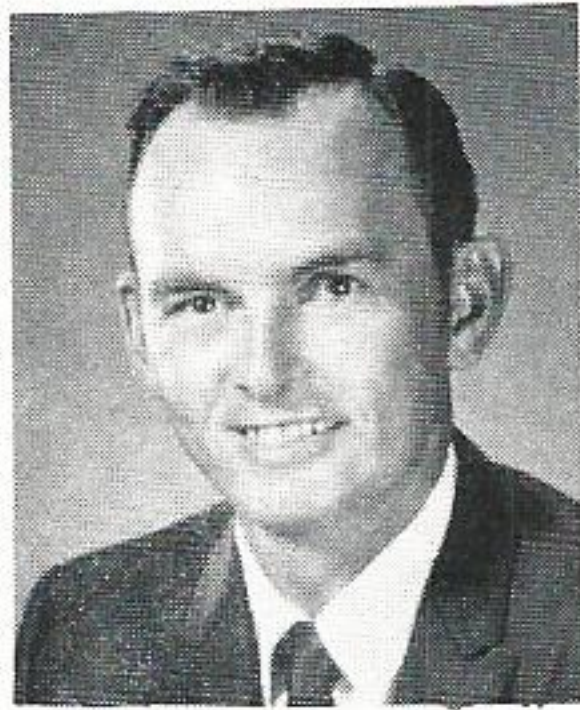
**Lawrence Bellow**  
Electric T&D Dept.  
Lake Charles



**Roy E. Eyler**  
Financial Serv. Dept.  
Beaumont



**Leslie G. Calder**  
Nelson Coal Project  
Beaumont



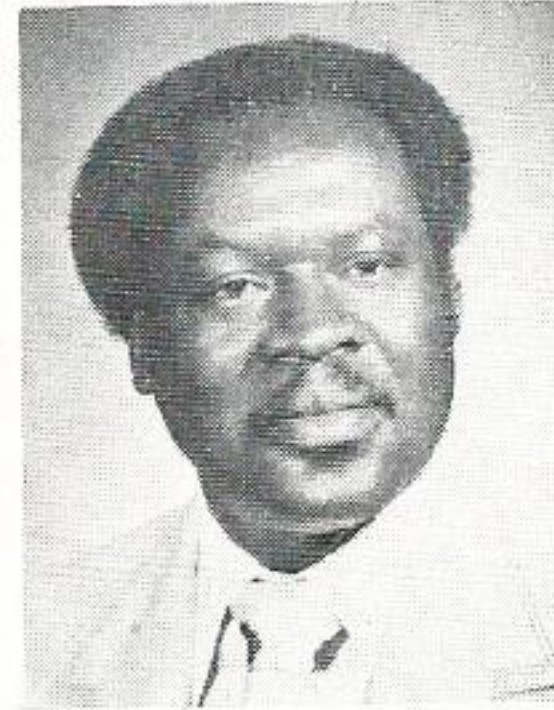
**Darrelton D. Richardson**  
Electric T&D Dept.  
Orange



**Ben E. Miller**  
Electric T&D Dept.  
Lake Charles



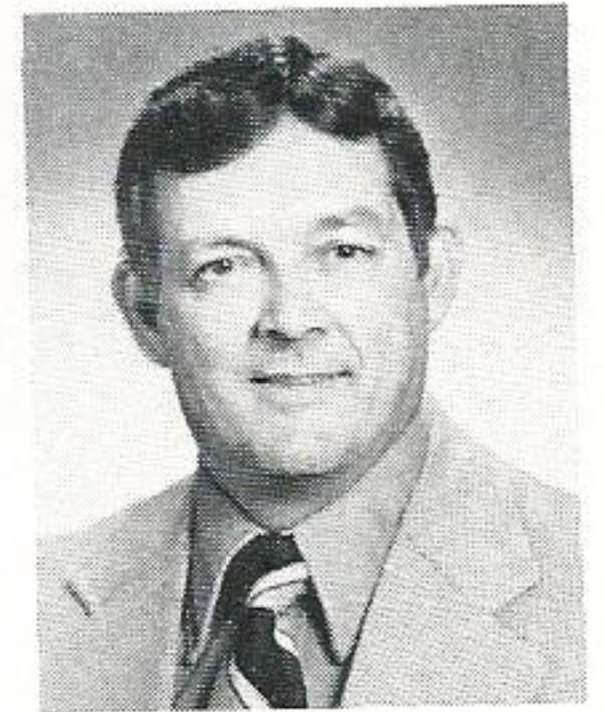
**James O. Perry**  
Division Production  
Conroe



**Milam Rogers**  
Div. Accounting Dept.  
Cleveland

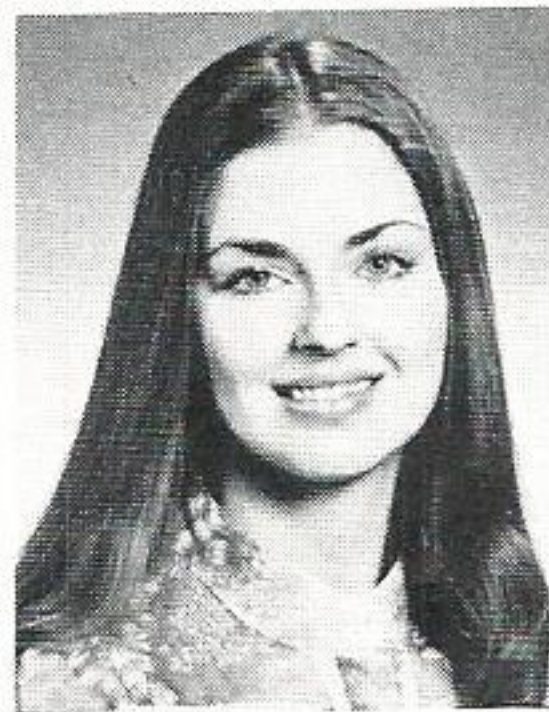


**Maxine M. Russell**  
Administrative Svcs.  
Beaumont



**Wendell L. Reed**  
Electric T&D Dept.  
Baton Rouge

# 10 Years



**Amanda M. Rhorer**  
Division Accounting  
Baton Rouge



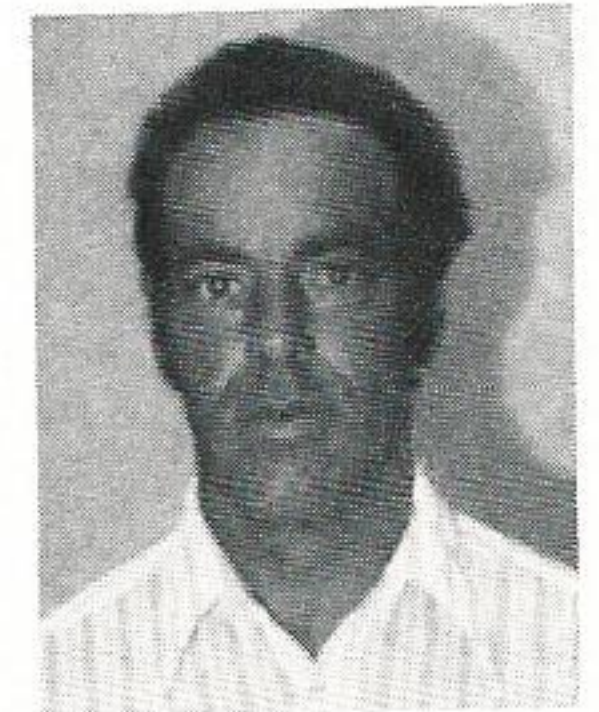
**Joseph S. Sam**  
Div. Accounting Dept.  
Lafayette



**Nobie T. Alford**  
Div. Accounting Dept.  
Hull



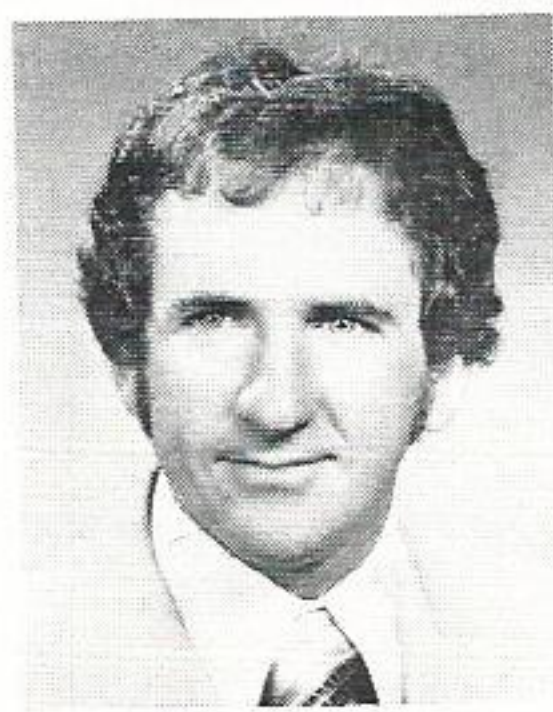
**Charles R. Jenkins**  
Division Production  
Lake Charles



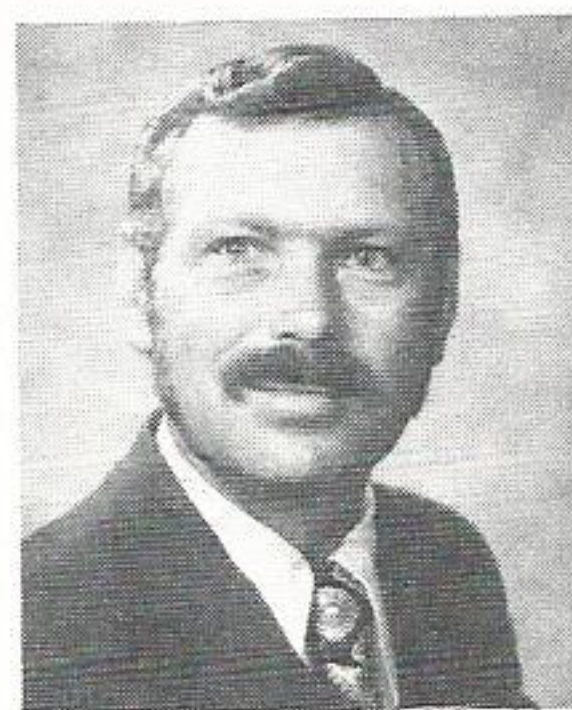
**Rodney D. Boudreaux**  
Electric T&D Dept.  
Baton Rouge



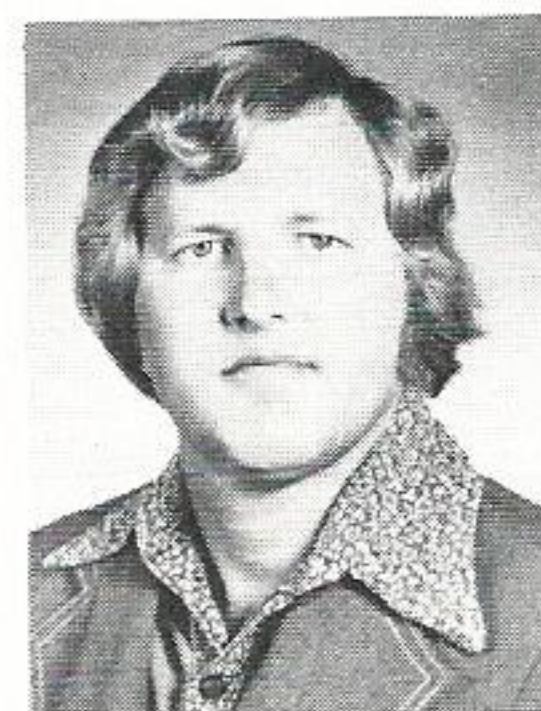
**Paul L. Jones**  
Division Production  
Beaumont



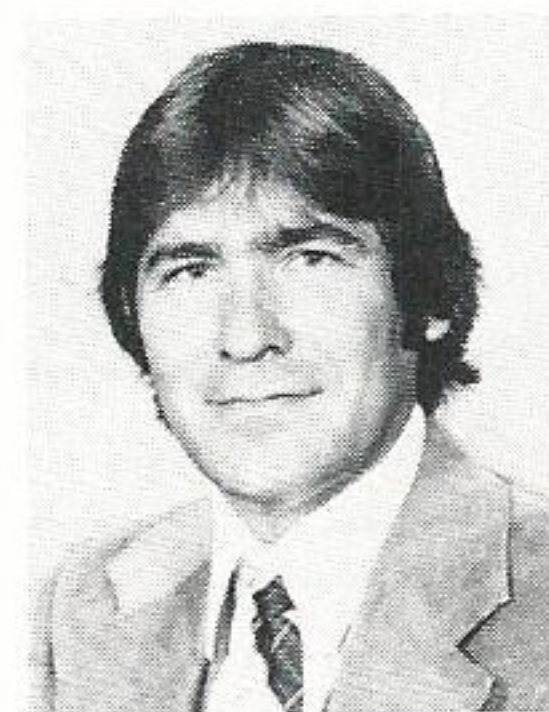
**Joel D. Mallet**  
Electric T&D Dept.  
Port Arthur



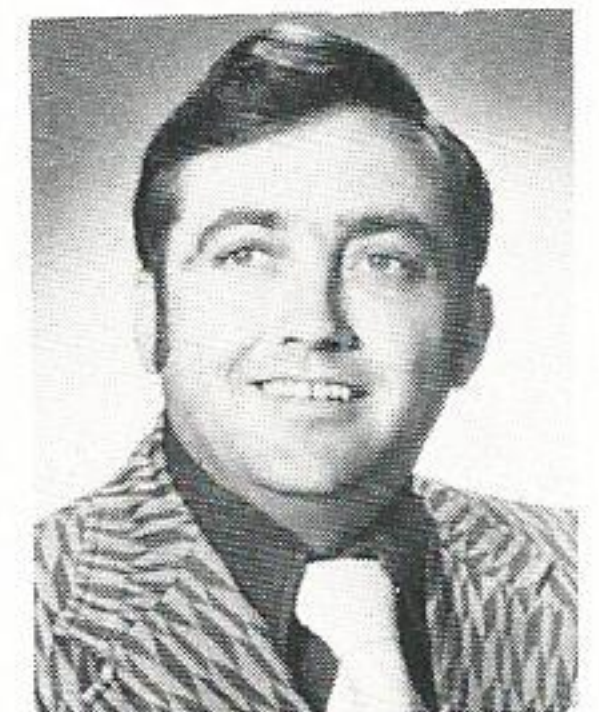
**Larry G. Grisham**  
Electric T&D Dept.  
Huntsville



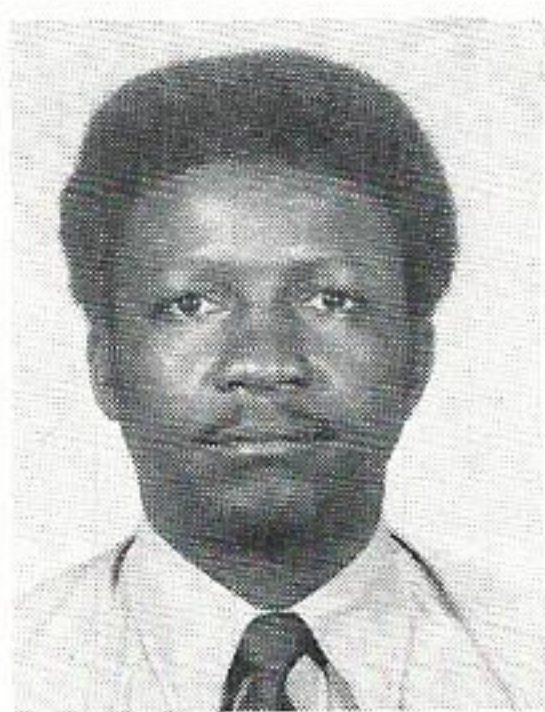
**Clarence J. Parent**  
Electric T&D Dept.  
Baton Rouge



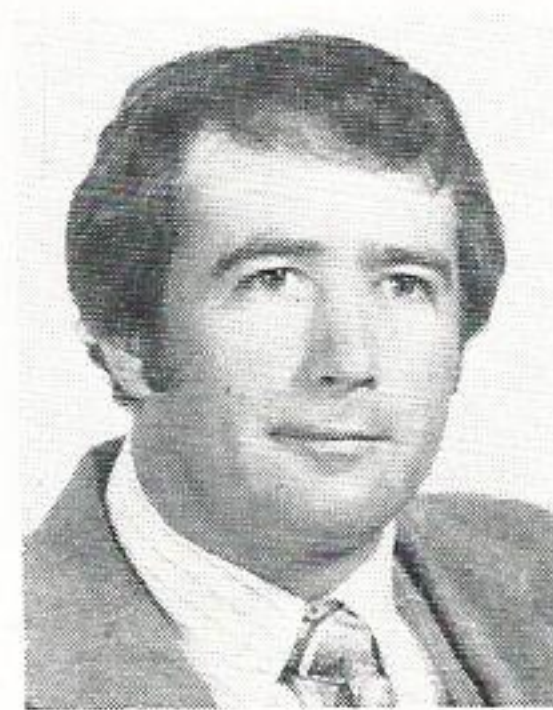
**David W. Phillips**  
Electric T&D Dept.  
Conroe



**Robert L. Petry**  
Internal Audit Dept.  
St. Francisville



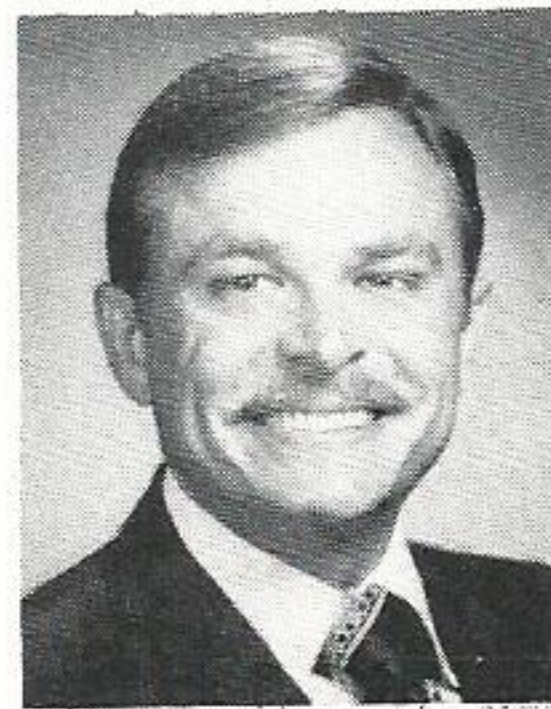
**Wesley Harris, Jr.**  
Division Production  
Port Arthur



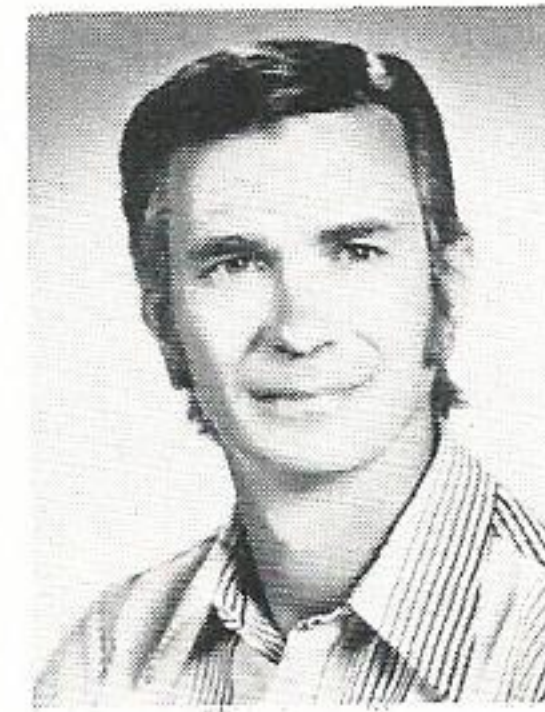
**Dudley Duplechien, Jr.**  
Electric T&D Dept.  
Lafayette



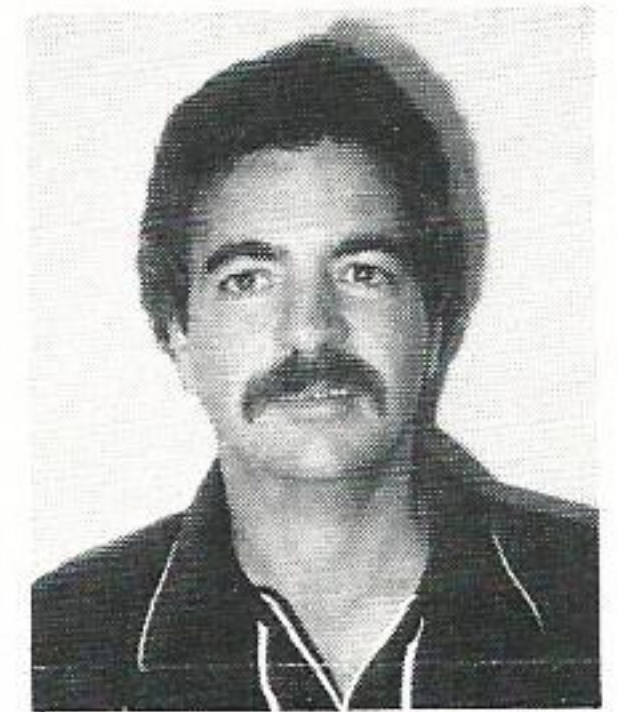
**Mark E. Walton**  
Pwr. Plant Eng. & Des.  
St. Francisville



**David V. Lassiter**  
Sys. Eng. Design  
Beaumont



**Paul A. Fourroux**  
Division Production  
Baton Rouge



**Raymond P. Loupe**  
Electric T&D Dept.  
Baton Rouge



# Coffee Cup



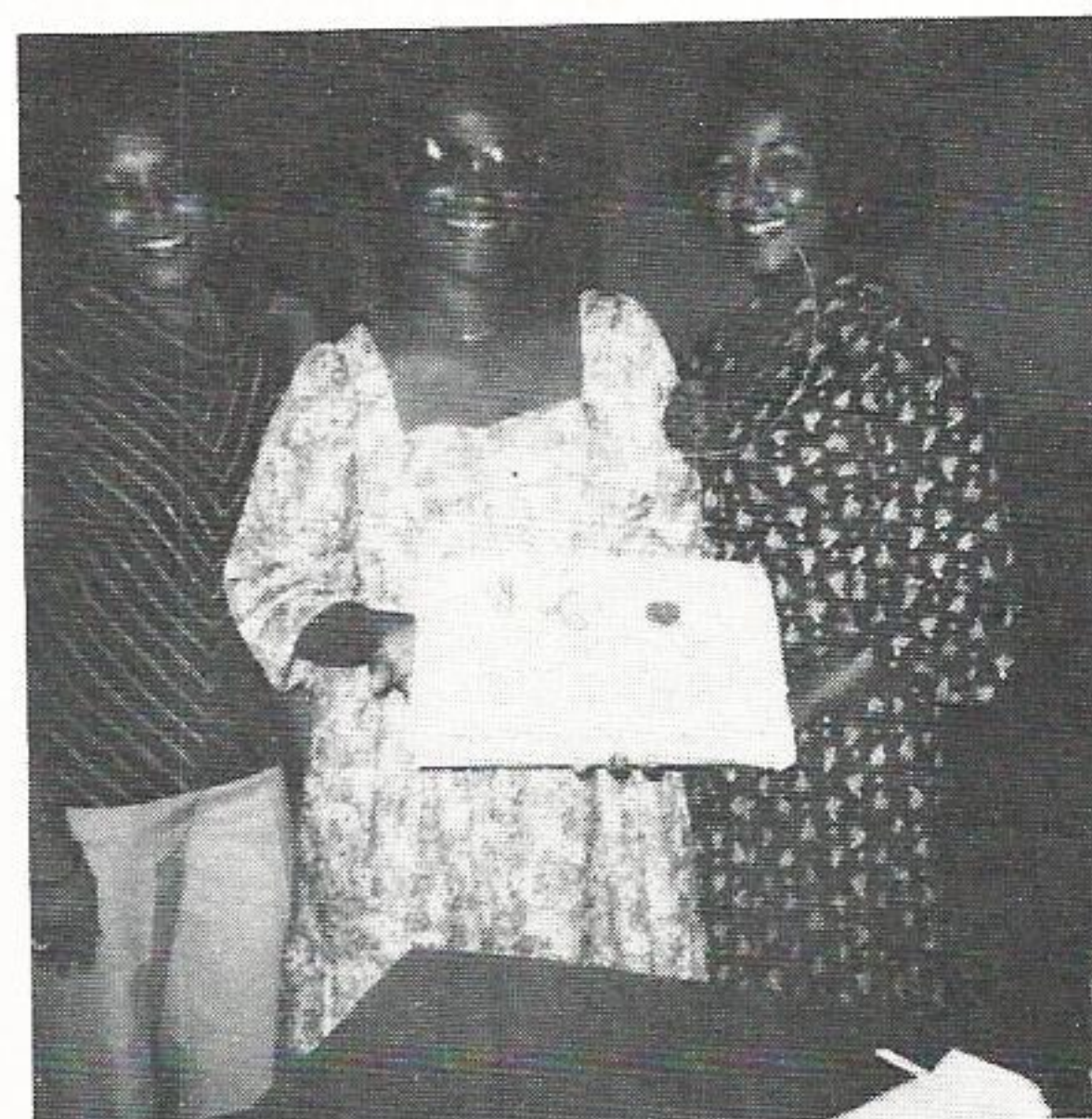
A softball team comprised of the company's Beaumont employees recently claimed the consolation trophy for their division in the Beaumont City Softball League. Appropriately named "John's Brew" for sponsor John's Lounge, the team also took first place in GSU's annual tournament. The team finished the regular season with a 9-4 record. Team members pictured are (top left) Gary Sobczak, Charlie White, Calvin Jaetzold, Bob Whaley, Don Joiner, Ron Thibodeaux and Greg Copeland. Players on the front row are (from left) Jim Milton, John Massey, David Hatcher, Jim McCall, Benny Wilkinson, Joe Ragusa and Bobby Sharp. (from Sydney Reis)



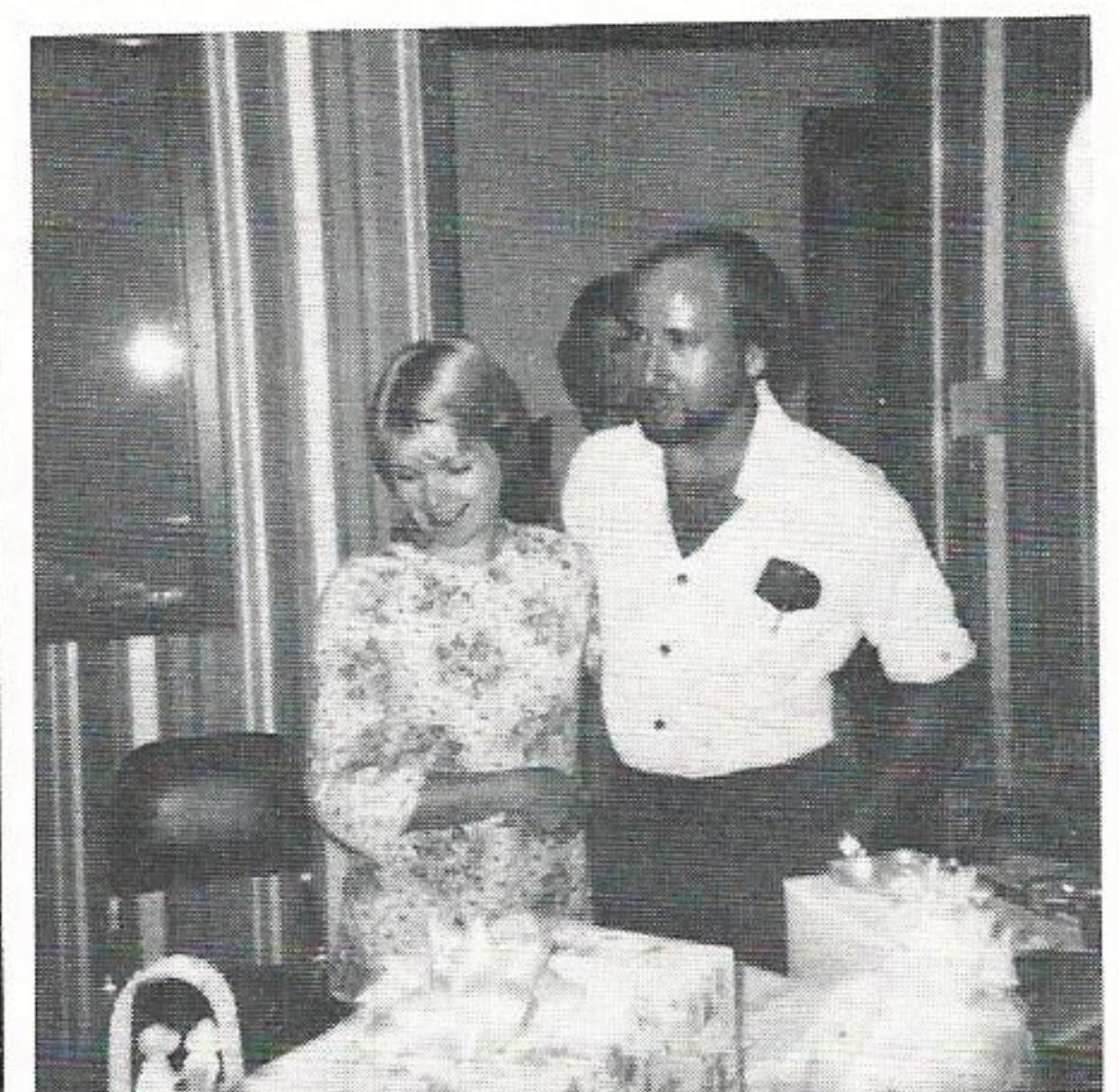
Mrs. Becky Watson was honored with a surprise wedding shower given by her co-workers on July 21. The former Becky Jackson, a consumer service representative in the Lake Charles Marketing Department, married Ed Watson, a Lake Charles heating and cooling contractor, in a civil ceremony in Lake Charles on July 13. They will reside in Lake Charles. The shower was given by Karen Spencer and Doris Hay, also Lake Charles consumer service reps. Becky (on left) is pictured here with Karen, one of her hostesses. (from Janet Followay)



Mike Bibby, consumer relations supervisor in Port Arthur, was presented with parting gifts and a cake before being transferred to Beaumont and taking the position of director-Program Development. Mike is pictured here with his wife, Bette.



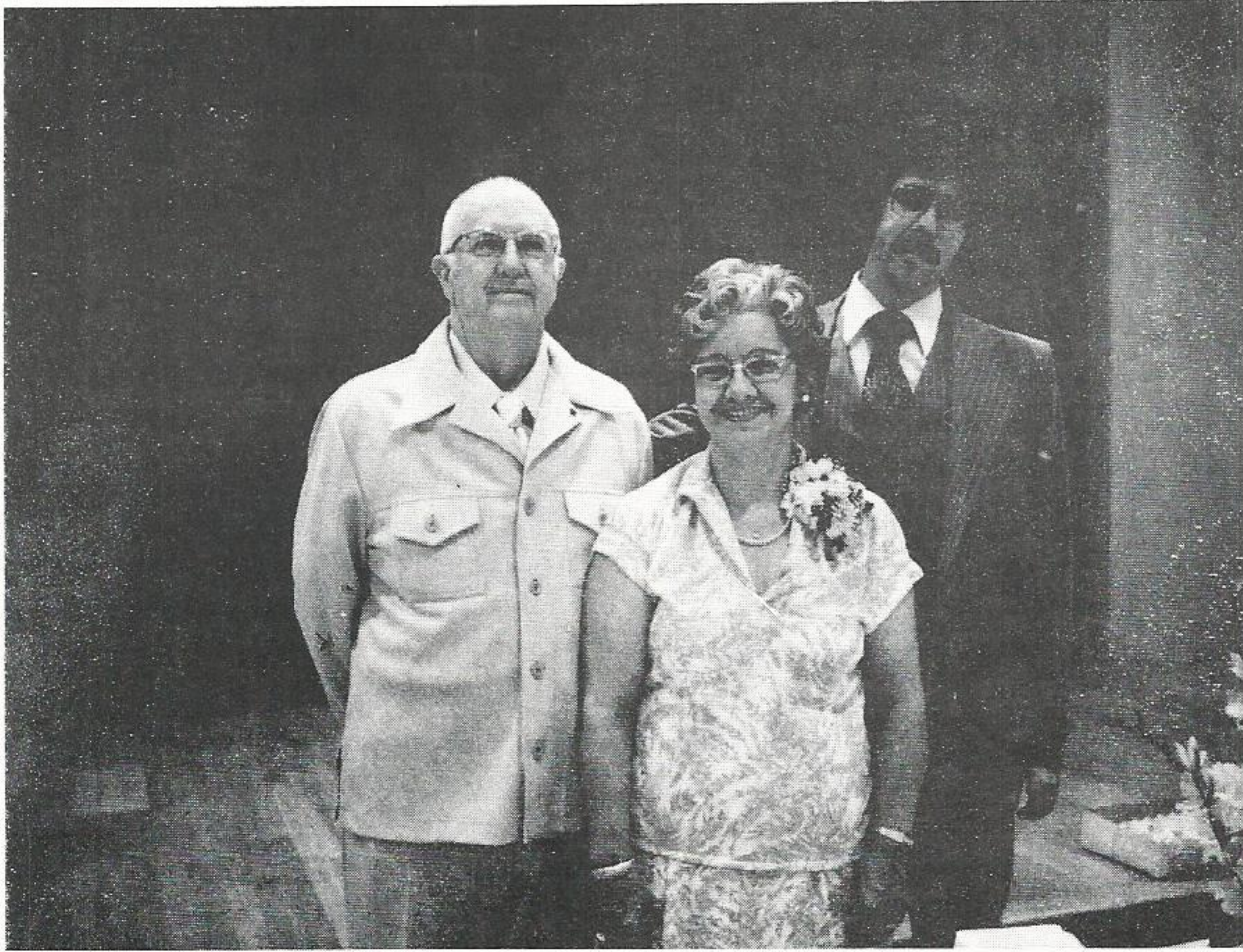
Earthell Johnson (center), clerk in the Port Arthur Accounting Department, was recently honored at a going away party. Earthell, who is "retiring" to the role of fulltime housewife and mother is flanked by Harriet Polidore (left) and Lovey Green.



Avnell Preslar, clerk in Port Arthur Accounting, and Neil Hebert, communications serviceman in Port Arthur, were married on July 14. The couple is pictured here at a surprise wedding shower given by co-workers. (from Sue Williams)



# Coffee Cup



Friends and co-workers recently honored Tom Stitler, utility man in the Beaumont T&D Department, with a retirement party. Tom retires after 37 years with the company. He is shown here with his wife, Cleo, and his youngest son, Thomas. A gift of cash was presented to Tom with best wishes for a happy retirement. Tom says he plans to play "a little tennis and a little golf." (from Carolyn Motl)



Iris Stanfield, executive stenographer in the Safety Department, was given a surprise baby shower on August 3. The entire Personnel Department participated and she received a number of useful gifts including a swing, a carry-all, a diaper bag, and crib sheets. She will return to work after the arrival of the baby.

The Zachary line crew recently adopted this mother kildeer when they discovered she had built her nest in the middle of the driveway at the Zachary substation. Every morning, members of the line crew would check on the bird. Whenever someone got too close to the nest, however, the mother bird would spread her wings and hover over the nest. To the delight of the crew, the eggs hatched and the newborn birds followed their mother to greener pastures.





# How To Make

## ASPARAGUS SUPREME

One 16 oz. can green peas, drained  
One 14½ oz. can cut asparagus spears  
and tips, drained

One 6 oz. can water chestnuts,  
drained  
1 cup Cheddar cheese, shredded  
One 10½ oz. can cream of  
mushroom soup

In 2 quart casserole layer one half of peas, asparagus, water chestnuts and cheese. Repeat. Pour soup over mixture. Cook on HIGH 6 minutes. Serves 6.

## RICE ORIENTAL

½ cup butter or margarine  
1 cup long grain rice  
One 6 oz. can water chestnuts,  
sliced and drained

One 10½ oz. can onion soup  
One 4 oz. can mushrooms,  
sliced and drained

Melt butter in 1½ quart casserole on HIGH 30 seconds. Add remaining ingredients; mix well. Cover and cook on HIGH 15 minutes or until rice is tender. Serves 4.

## CHEESECAKE

3 Tbsps. butter or margarine  
1 cup graham cracker crumbs  
2 Tbsps. sugar  
4 eggs

1 cup sugar  
Two 8 oz. pkgs. cream cheese  
2 tsps. vanilla  
½ tsp. salt  
One 16 oz. can cherry pie filling

In 8 inch round dish, melt butter on HIGH ½ minute. Stir in graham cracker crumbs and sugar. Press mixture on bottom and sides of dish. Cook on HIGH 1½ to 2 minutes, turning after 1 minute. In blender container place eggs, sugar, cream cheese, vanilla and salt. Blend on HIGH speed 1 minute until smooth. Pour into crust over back of spoon to prevent crust from breaking. Cook on MEDIUM 23 minutes, rotating dish every 7 minutes, until center is almost set. Cover and refrigerate 3 hours. Top with cherry pie filling.

## STRAWBERRY JAM

Three 10 oz. pkgs. frozen strawberries  
2 Tbsps. water

2½ Tbsps. powdered fruit pectin  
3 cups sugar

Place strawberries in 3 quart casserole. Cook on DEFROST 4 to 6 minutes. Crush strawberries; add water and fruit pectin, stirring well. Cover and cook on HIGH 8 to 10 minutes, or until mixture is at a full rolling boil. Stir. Add sugar and cook, uncovered, 8 to 10 minutes or until mixture reaches a full rolling boil. Cook 1 additional minute. Skim off foam. Stir mixture for 5 minutes before ladling into sterilized half pint jars. Seal. Makes 4½ cups.



Bulk Rate  
U. S. POSTAGE PAID  
Beaumont, Texas  
Permit No. 11

AFTER FIVE DAYS RETURN TO

PLAIN TALKS

P. O. BOX 2951  
BEAUMONT, TEXAS

# The Rio cost more than a grand.



In 1853, money took America to the banks  
Of the Rio Grande.

In that year, the Gadsden Purchase further  
extended United States territory down the west  
bank of the mighty Rio Grande.

And established what today is the border  
between Mexico and the states of Arizona and  
New Mexico.

The cost: \$10,000,000.

And Americans put up the

money. By purchasing government securities.

You could bank on America back then.  
And you still can. By buying U.S. Savings Bonds  
at work. Through the Payroll Savings Plan.

That way, a little is set aside from each  
paycheck to buy Bonds. Automatically.

So help keep your future, and America's,  
flowing smoothly. Buy U.S. Savings  
Bonds.

They're a grand way to save.



Take  
stock  
in America.

Series E Bonds pay 6% interest when held to maturity of 5 years (4½% the first year). Interest is not subject to state or local income taxes, and federal tax may be deferred until redemption.

**Ad Council** A public service of this publication  
and The Advertising Council.